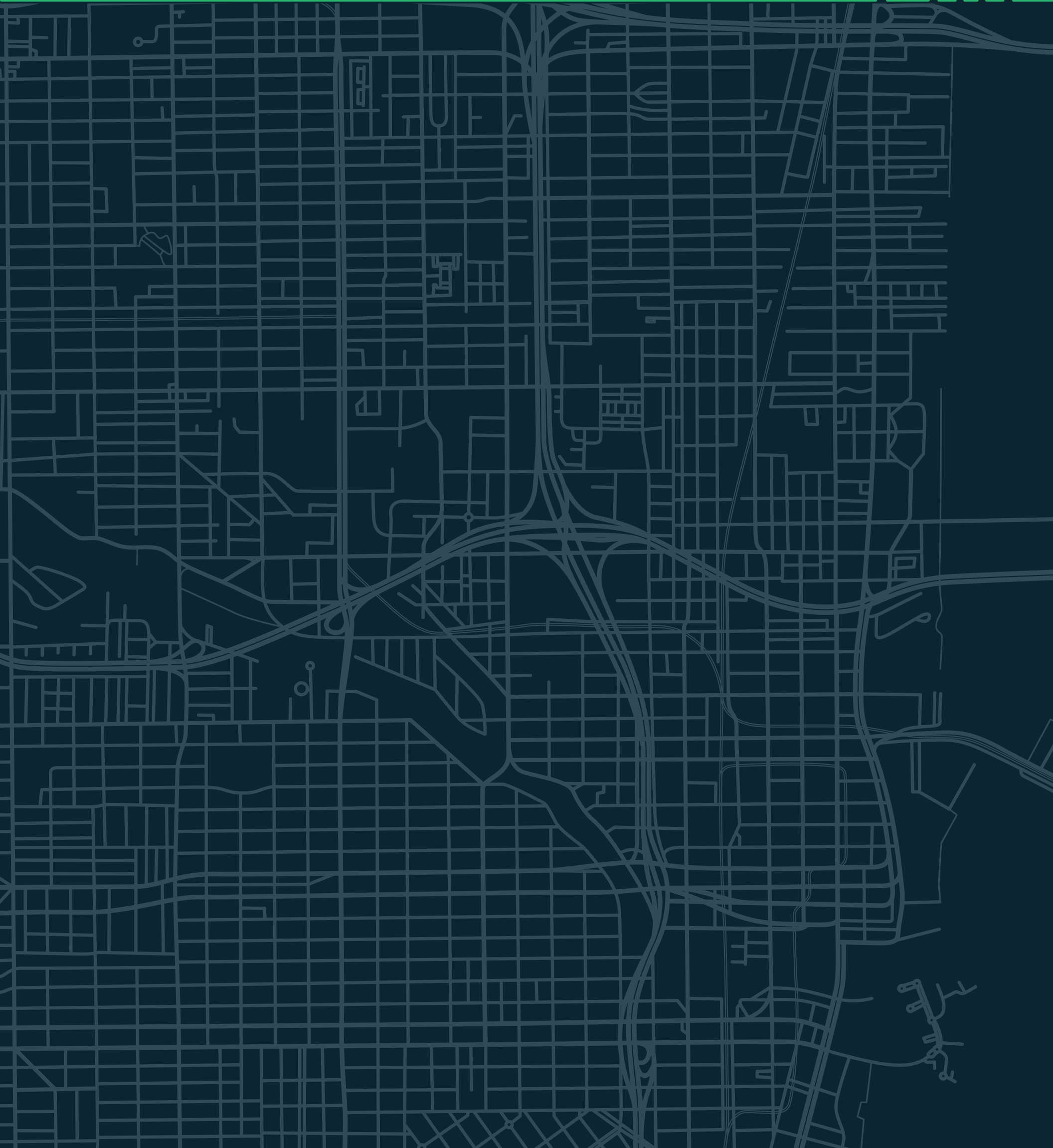




MIAMI-DADE CONNECTIVITY ASSESSMENT

# Proposed Bicycle Network

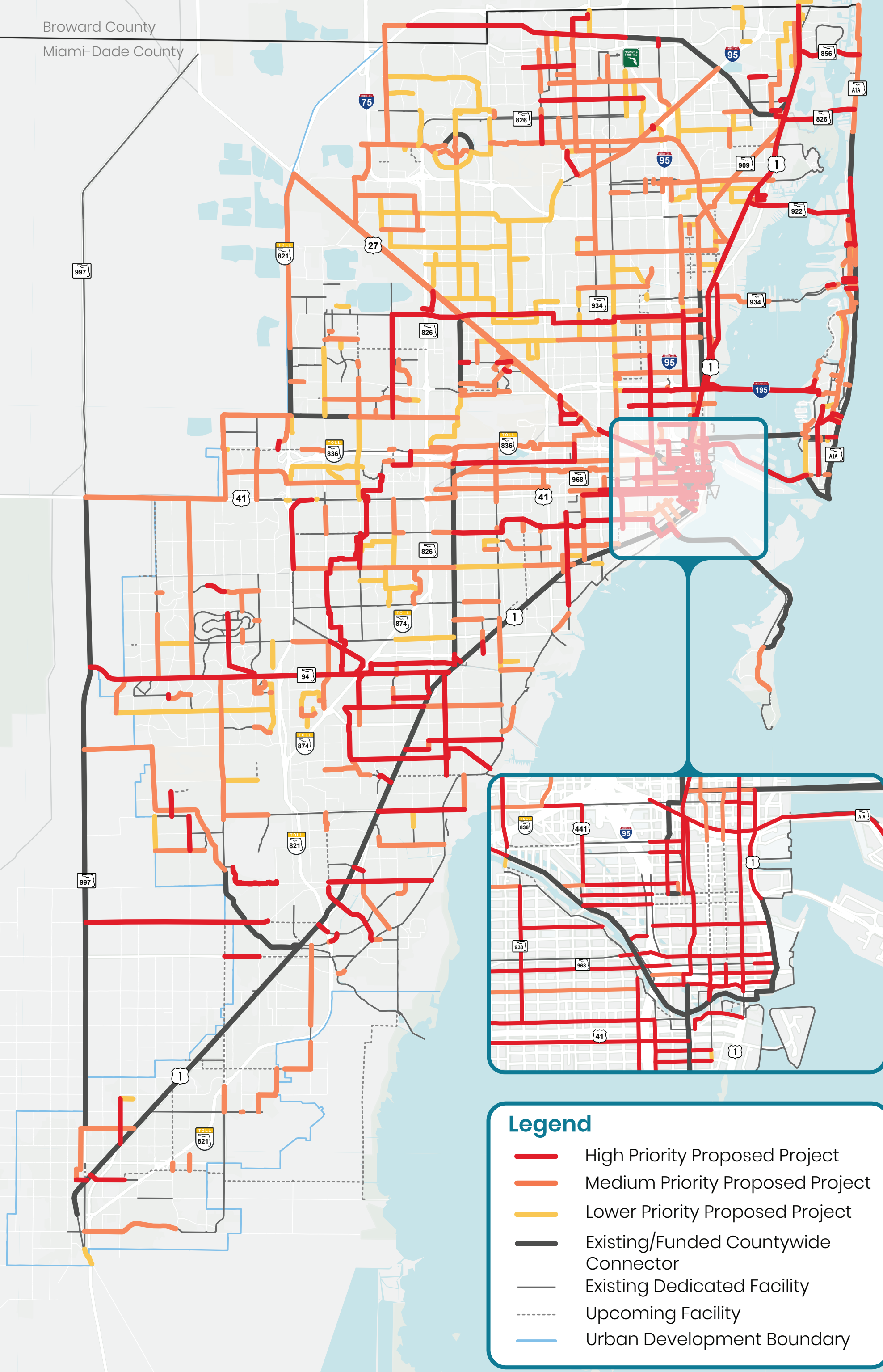


MUNICIPALITY PACKET

## Miami Springs



Broward County  
Miami-Dade County



### Legend

- High Priority Proposed Project
- Medium Priority Proposed Project
- Lower Priority Proposed Project
- Existing/Funded Countywide Connector
- Existing Dedicated Facility
- Upcoming Facility
- Urban Development Boundary



---

# Summary

The Florida Department of Transportation (FDOT) is committed to expanding mobility options for the people of Miami-Dade County and District 6. Embracing modes of transportation beyond the personal vehicle is a defining feature of FDOT moving forward. The Bicycle Connectivity Assessment is intended to act as a foundational proposed network to foster a collaborative, on-going conversation with all involved agencies in Miami-Dade County to expand its existing and upcoming (funded) active transportation network. This Assessment is the beginning of a living document which identifies connections that improve the equity, connectivity, accessibility, and safety of cyclists within Miami-Dade County.

The proposed connections of this foundational network are based on potential needs within the County. All proposed connections' alignments within this effort are a combination of:

- Filling perceived gaps within the existing and upcoming bicycle network,
- Providing connections to important community fixtures and essential areas,
- Improving intermunicipal active transportation options,
- Placing Existing, Funded, and Proposed Greenways, Trails, and Shared-Use Paths at the center of its organization, to offer countywide connectivity,
- And utilizing adopted recommendations from existing municipal and County planning studies which identify local bicycle improvements.

Community Fixtures and Essential Areas Include:

- Existing and Proposed Major Transit Centers
- University/College/Tech Schools
- High Schools
- Stadiums/Arenas
- Convention Centers
- Hospital/Medical Centers
- High Employee Sectors (Census Block Groups)
- High Population Density of Underserved Demographics
- High Density Sectors of Low-Income and Zero-Car Households

Individual feasibility assessments will be required, and alternative routes will inevitably be required for some of these proposed connections. If a County or Municipality sees a proposed connection within this Assessment that is counter-intuitive to their local initiatives or possess what it perceives to be a superior alignment, FDOT wants to hear it and will update the network accordingly.

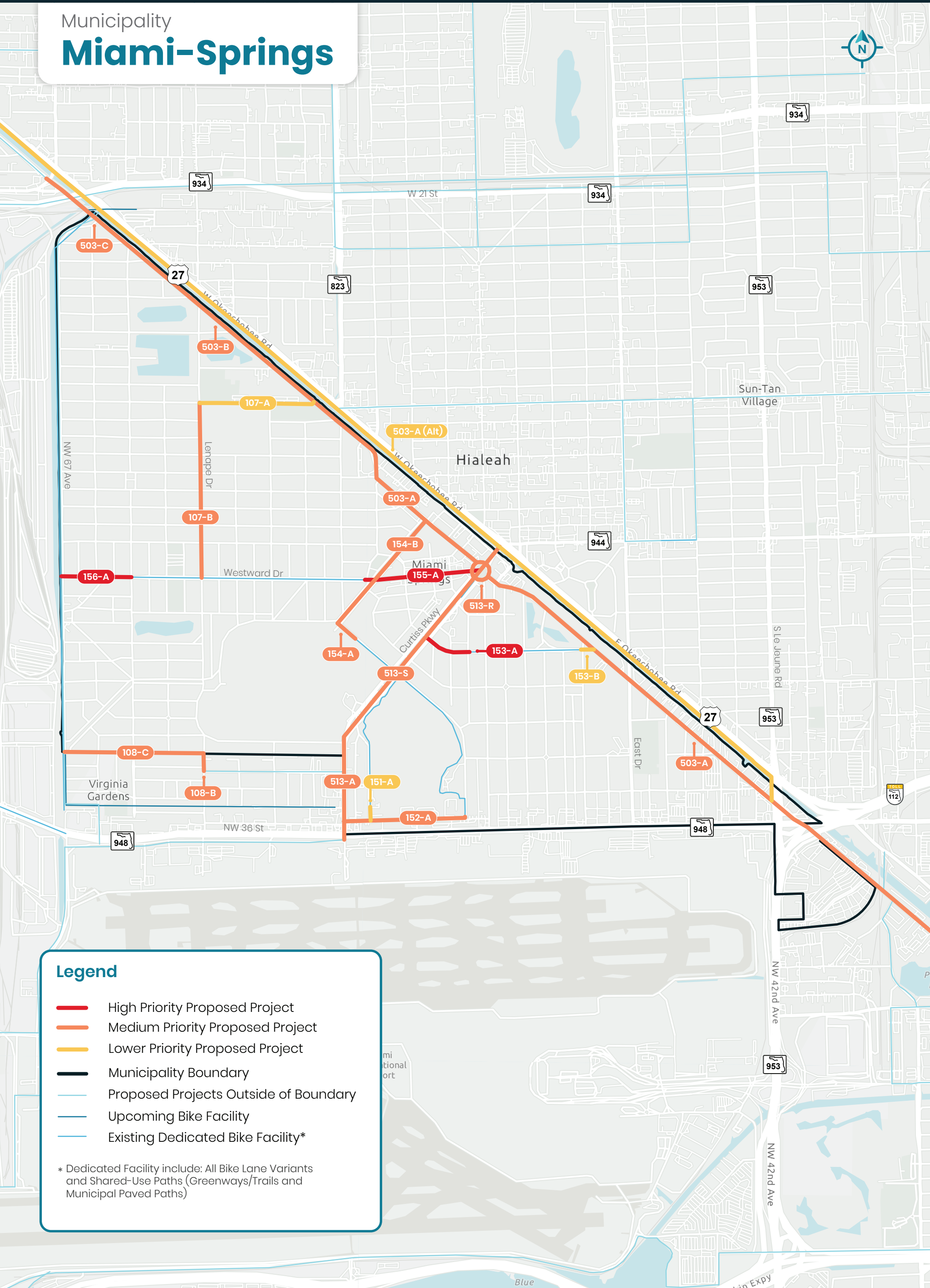
The top three categories that determine higher or lower level of priority are listed below. See the Project Prioritization Criteria Chapter in the final report for more details.

- Filling gaps and/or connecting to existing or funded shared-use paths.
- Providing new connections which improve Miami-Dade's transportation equity
- Providing connections to existing transit such as the Metrorail or proposed stations within the SMART Plan.



Municipality

## Miami-Springs



### Legend

- High Priority Proposed Project
- Medium Priority Proposed Project
- Lower Priority Proposed Project
- Municipality Boundary
- Proposed Projects Outside of Boundary
- Upcoming Bike Facility
- Existing Dedicated Bike Facility\*

\* Dedicated Facility include: All Bike Lane Variants and Shared-Use Paths (Greenways/Trails and Municipal Paved Paths)

**Proposed Project Table**

 [Visit the Online Interactive Map](#)

Connection Number	Subgroup	Connection Type	Facility/Roadway	Limits - From	Limits - To	Facility/Roadway Jurisdiction	Length (Mi.)
156	A	Point of Interest	Westward Dr	Ludlam Dr	Hammond Dr	City - Miami Springs	0.25
155	A	Point of Interest	Westward Dr	Flamingo Cir	Curtiss Pkwy	City - Miami Springs	0.40
153	A	Point of Interest	Morningside Dr	Curtiss Pkwy	Navarre Dr	City - Miami Springs	0.17
108	C	Point of Interest	Lafayette Dr	Ludlam Dr	NW 62 Ave	City - Miami Springs	0.50
108	B	Point of Interest	NW 62 Ave	Lafayette Dr	NW 40 St	City - Virginia Gardens	0.06
154	A	Point of Interest	Deer Run	Esplanade Dr	435 ft East of Esplanade Dr	City - Miami Springs	0.08
503	A	County Connector	Old Miami River Trail - US 27 / Okeechobee Rd	W 4 Ave	NW 27 Ave	County	4.34
107	B	Point of Interest	Lenape Dr	Dove Ave	Westward Dr	City - Miami Springs	0.62
513	R	County Connector	Perimeter Trail - Curtis Pkwy	South River Drive	N Royal Poinciana Blvd	County	1.39
513	S	County Connector	Perimeter Trail - Curtis Pkwy	N Royal Poinciana Blvd	S of Deer Run	County	1.39
513	A	County Connector	Perimeter Trail - Curtis Pkwy	S of Deer Run	SR 948/ NW 36 St	County	1.39
154	B	Point of Interest	Esplanade Dr	NW South River Dr	Deer Run	City - Miami Springs	0.50
152	A	Point of Interest	Fairway Dr	Curtiss Pkwy	Deer Run	City - Virginia Gardens	0.45
503	C	County Connector	N Royal Poinciana Blvd	NW 74 St	Starling Ave	County	0.48
503	B	County Connector	N Royal Poinciana Blvd	Starling Ave	Quail Ave	County	0.86
503	A (Alt)	County Connector	Old Miami River Trail - US 27 / Okeechobee Rd	SR 821	NW 42 Ave	State	9.81
107	A	Point of Interest	Dove Ave	Lenape Dr	N Royal Poinciana Blvd	City - Miami Springs	0.41
151	A	Point of Interest	Elderon Dr	NW 38 St	Fairway Dr	City - Virginia Gardens	0.05
153	B	Point of Interest	Morningside Dr	Minola Dr	NW South River Dr	City - Miami Springs	0.05