



Florida Department of Transportation  
**DISTRICT SIX CONSTRUCTION**  
Miami-Dade & Monroe counties



**State Road (S.R.) 25/U.S. 27/Okeechobee Road  
Corridor Wide Construction Update**

Below is a list of upcoming and ongoing construction activities and lane closure information for each project segment.

---

**RESCHEDULED: NIGHTTIME CLOSURE ALONG NW SOUTH RIVER DRIVE  
BETWEEN NW 116 WAY AND NW 121 WAY**

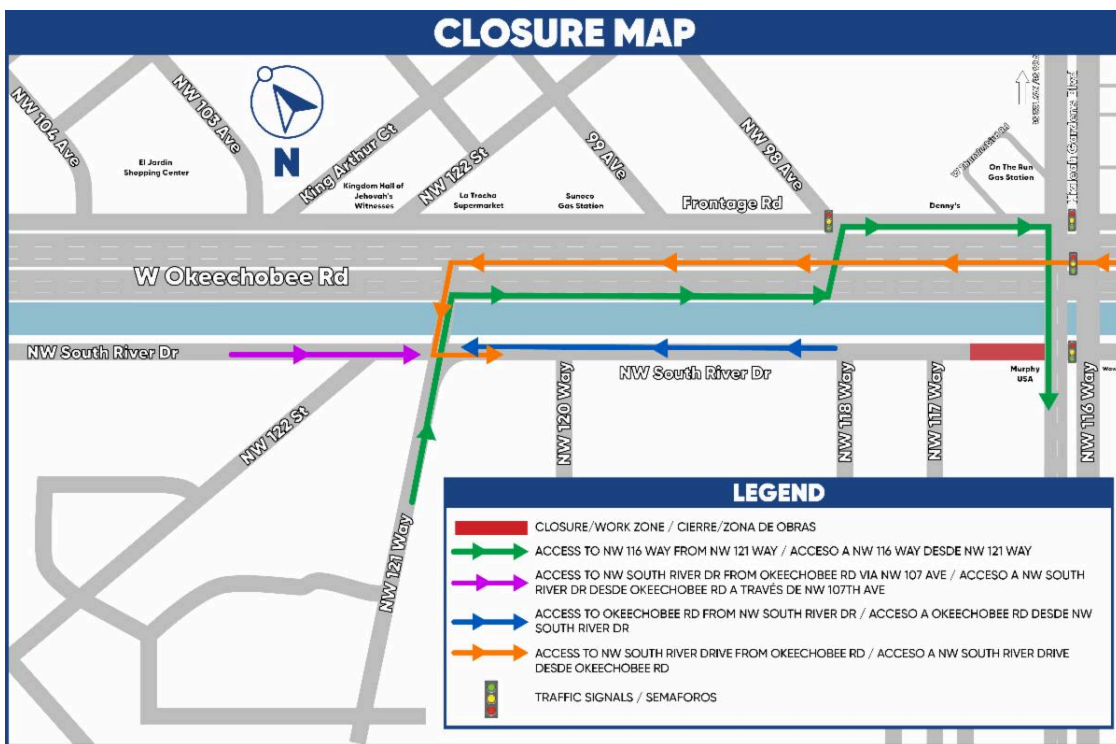
**Please note: This work has been rescheduled to Sunday, May 31, 2026.**

All travel lanes along NW South River Drive between NW 116 Way and NW 121 Way will be closed starting at **9 p.m. on Sunday, May 31, 2026, until 5:30 a.m. on Monday, June 1, 2026**. Limited access in the area around NW 121 Way will be provided.

These closures are necessary to allow crews to investigate a sanitary sewer line connection in this area.

- Motorists can access NW South River Drive west of NW 116 Way via NW 121 Way
- Lanes along NW 121 Way will remain open.

**Detour Map**

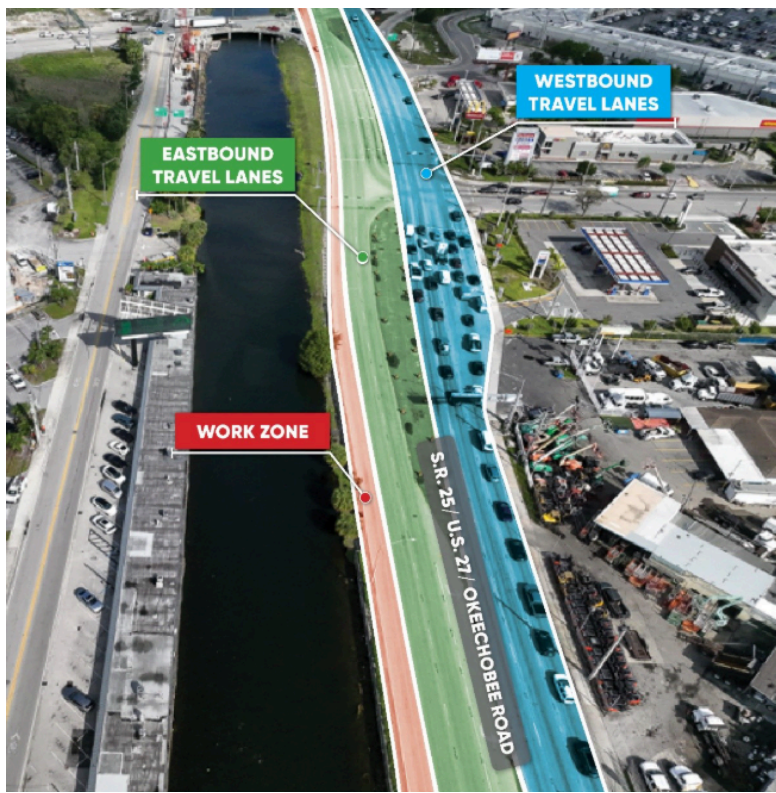


## OKEECHOBEE ROAD AND S.R 826/PALMETTO EXPRESSWAY TRAFFIC SHIFT AND LANE REDUCTIONS

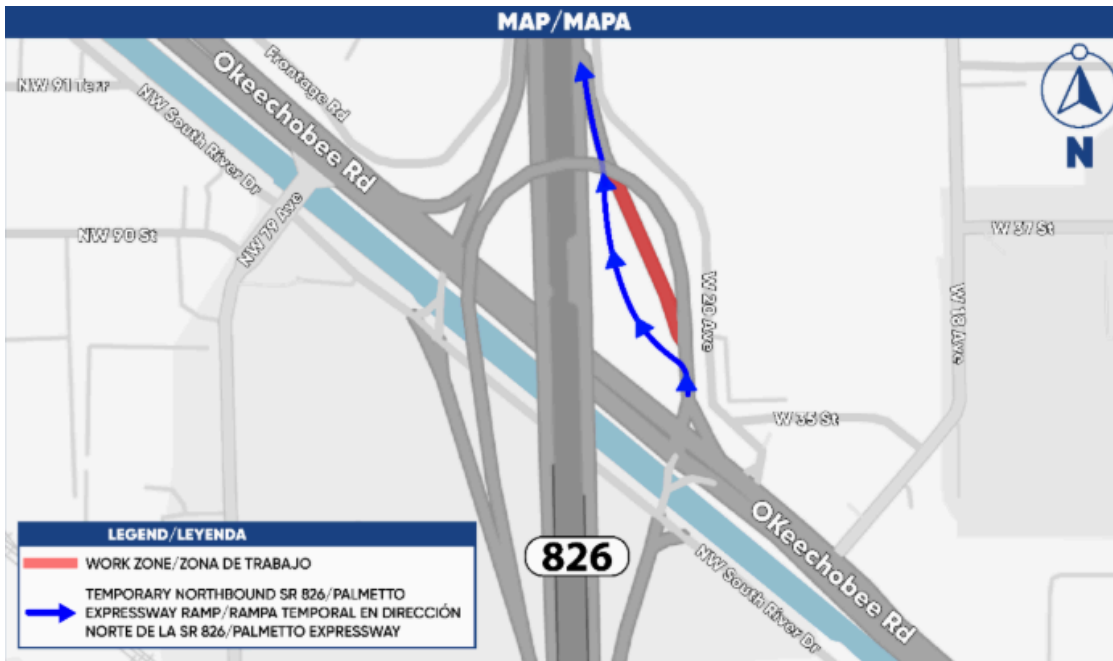
Starting **Monday, June 1, 2026**, various travel lane shifts will take place along S.R. 25/U.S. 27/Okeechobee Road to allow for the expansion of the work zone. These traffic shifts and lane reductions will begin at 11 p.m. each night and lanes will open to traffic at 5 a.m. the following morning. The dates and locations are as follows:

- **Monday, June 1, 2026, to Tuesday, June 2, 2026**, westbound lanes along S.R. 25/U.S. 27/Okeechobee Road from S.R. 826/Palmetto Expressway to east of W. 18 Avenue will be shifted to the north.
- **Tuesday, June 2, 2026, to Wednesday, June 3, 2026**, eastbound lanes along S.R. 25/U.S. 27/Okeechobee Road from east of W. 18 Avenue to S.R. 826/Palmetto Expressway will be shifted to the north.
- **Wednesday, June 3, 2026, to Thursday, June 4, 2026**, Ramp C-R from Okeechobee Road to northbound S.R. 826/Palmetto Expressway will be shifted to the north.
- **Wednesday, June 3, 2026**, exit lanes along the northbound S.R. 826/Palmetto Expressway off-ramp will be reduced from two to one lane. Lanes along NW South River Drive will remain the same.

### Westbound and Eastbound Traffic Shifts



Ramp C-2 from Okeechobee Road to northbound S.R. 826/Palmetto Expressway



**RESCHEDULED: NIGHTTIME CLOSURE ALONG NORTHBOUND S.R. 826/PALMETTO EXPRESSWAY**

Please note: This work has been rescheduled to Thursday, June 4, 2026.

One northbound lane along State Road (S.R.) 826/Palmetto Expressway between NW 103 Street and S.R. 25/U.S. 27/Okeechobee Road will be closed starting at **9 p.m. on Thursday, June 4, 2026**. A second northbound lane will close at **11 p.m.**

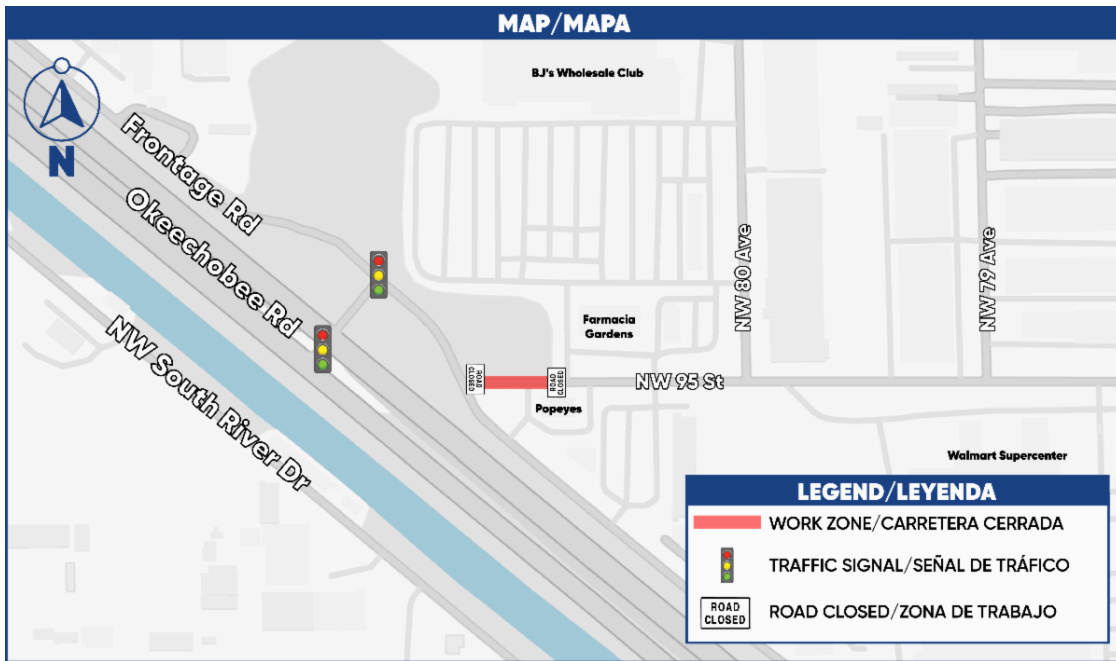
These closures are necessary to allow crews to install Intelligent Transportation System (ITS) poles. Both lanes will reopen to traffic at **5 a.m. on Friday, June 5, 2026**.

## COMING SOON: CONTINUOUS LANE CLOSURE ALONG NW 95 ST BETWEEN FRONTAGE RD AND NW 80 AVE

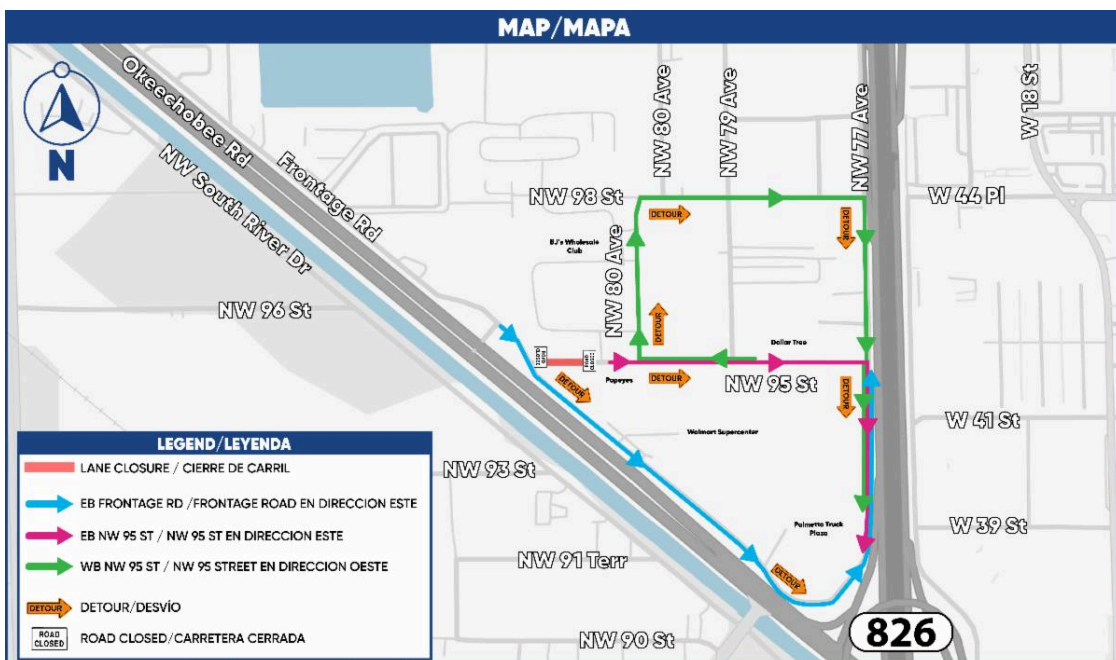
Starting on **Monday, June 15, 2026, at 9 p.m.**, travel lanes in both directions along NW 95 Street between Frontage Road and NW 80 Avenue will be closed to traffic continuously for three weeks. Travel lanes are expected to reopen to traffic on **Friday, July 3, 2026, at 5:30 a.m.**

This closure is necessary to allow crews to reconstruct NW 95 Street and pour the concrete pavement. Please use caution and follow the posted signage. Detours will be in place.

### NW 95 Street Work Zone



### Detour Map



### **Segment Three: From east of NW 87 Ave. to NW 74 St., including Palmetto Expy.**

- Performing drainage work along S.R. 25/U.S. 27/Okeechobee Rd, Frontage Rd, NW South River Dr, and NW 79 Ave.
- Installing and performing the following:
  - Preparing the soil layer beneath the pavement, light pole bases and conduits, and signalization work along Frontage Rd.
  - Excavation, barrier walls, lighting, and temporary signalization along Okeechobee Rd.
  - Clearing and grubbing along the canal between NW 95 St and NW 79 Ave for roadway widening.
- Bridge construction at:
  - Okeechobee Rd and NW 79 Ave.
  - Bridge foundations along NW South River Dr between NW 79 Ave. and southbound S.R. 826/Palmetto Expy. on ramp.
  - NW South River Dr. and northbound S.R. 826/Palmetto Expy. off ramp.
  - MSE wall for southbound S.R. 826/Palmetto Expy. on ramp.
  - Bridge foundations along eastbound Okeechobee along the C-6 Canal between NW 95 St and S.R. 826/Palmetto Expressway.

During this time, single lane closures may take place along Frontage Rd and Okeechobee Rd in both directions.

Please note, utility companies are also performing relocations efforts along:

- South River Drive

### **General Lane Closures**

Closures may take place during the following hours:

- 9 a.m. to 3:30 p.m. weekdays and weekends.
- 9 p.m. to 5:30 a.m. on weekdays.
- 11 p.m. to 7:30 a.m. on weekends.

### **Continuous Lane Closures/Traffic Shifts**

- Lane closure along southbound NW South River Dr between NW 91 Terr and NW 79 Ave.
- Southbound travel lanes along the NW 79 Ave bridge are reduced to two lanes.
- One northbound thru lane and one right-turn lane along NW South River Drive at the northbound S.R. 826/Palmetto Expressway off-ramp are removed.

***PLEASE NOTE THAT SCHEDULES MAY CHANGE DUE TO WEATHER OR UNEXPECTED CONDITIONS.***

---

### **[PLAN YOUR COMMUTE!](#)**

View the corridor wide traffic patterns and lane closures by clicking below:

[Online Map](#)

---

### **[FOR MORE INFORMATION](#)**

Contact Community Outreach Specialist Veronica Briceno at [veronica.briceno@dot.state.fl.us](mailto:veronica.briceno@dot.state.fl.us) or at (954) 548-2754

Drivers are encouraged to log onto [www.fl511.com](http://www.fl511.com) to get real-time traffic and lane closure information.

Corridor Wide Website



Florida Department of Transportation, District Six | 1000 NW 111 Avenue | Miami, FL 33172 US

[Unsubscribe](#) | [Constant Contact Data Notice](#)