



Florida Department of Transportation  
**DISTRICT SIX CONSTRUCTION**  
Miami-Dade & Monroe counties



## State Road (S.R.) 25/U.S. 27/Okeechobee Road Corridor Wide Construction Update

Below is a list of upcoming and ongoing construction activities and lane closure information for each project segment.

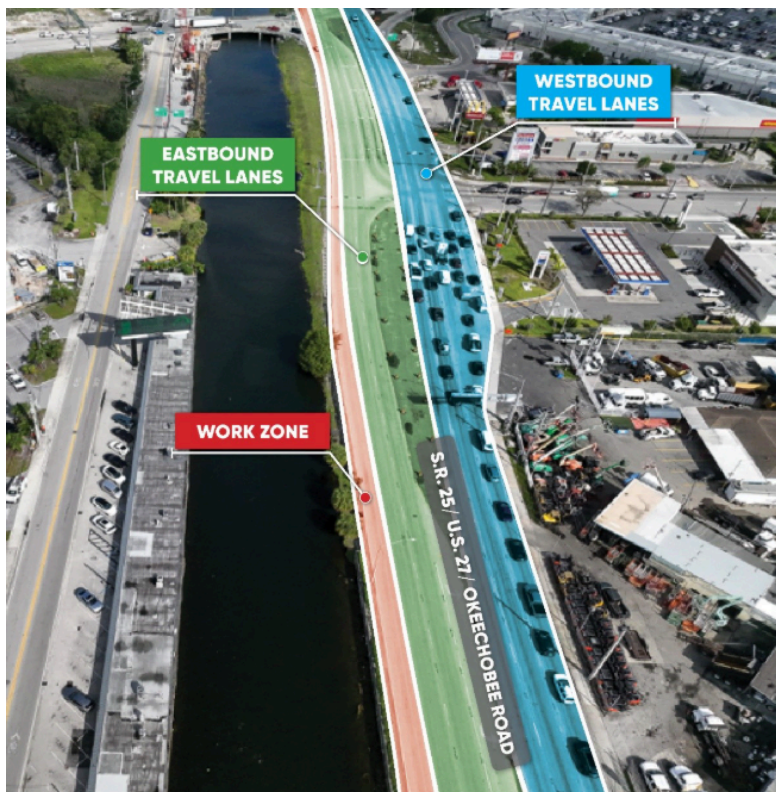
---

### COMING SOON: WESTBOUND AND EASTBOUND OKEECHOBEE ROAD TRAFFIC SHIFT AND LANE REDUCTIONS

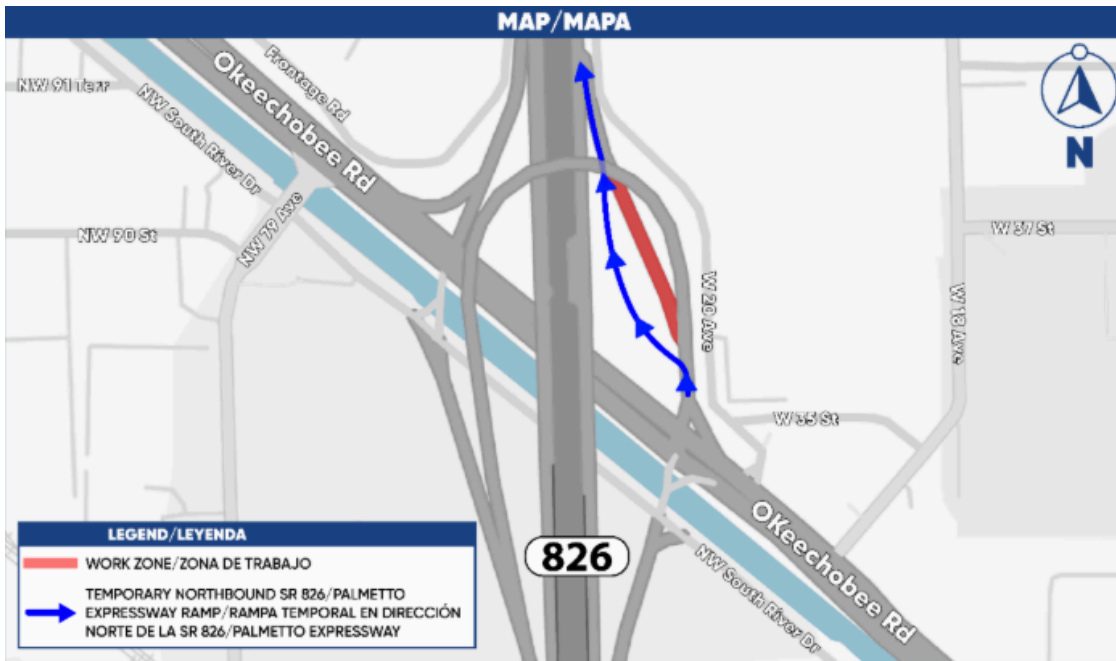
Starting **Monday, June 1, 2026**, various travel lane shifts will take place along S.R. 25/U.S. 27/Okeechobee Road to allow for the expansion of the work zone. These traffic shifts and lane reductions will begin at 11 p.m. each night and lanes will open to traffic at 5 a.m. the following morning. The dates and locations are as follows:

- **Monday, June 1, 2026, to Tuesday, June 2, 2026**, westbound lanes along S.R. 25/U.S. 27/Okeechobee Road from S.R. 826/Palmetto Expressway to east of W. 18 Avenue will be shifted to the north.
- **Tuesday, June 2, 2026, to Wednesday, June 3, 2026**, eastbound lanes along S.R. 25/U.S. 27/Okeechobee Road from east of W. 18 Avenue to S.R. 826/Palmetto Expressway will be shifted to the north.
- **Wednesday, June 3, 2026, to Thursday, June 4, 2026**, Ramp C-2 from Okeechobee Road to northbound S.R. 826/Palmetto Expressway will be shifted to the north.

### **Westbound and Eastbound Traffic Shifts**



Ramp C-2 from Okeechobee Road to northbound S.R. 826/Palmetto Expressway

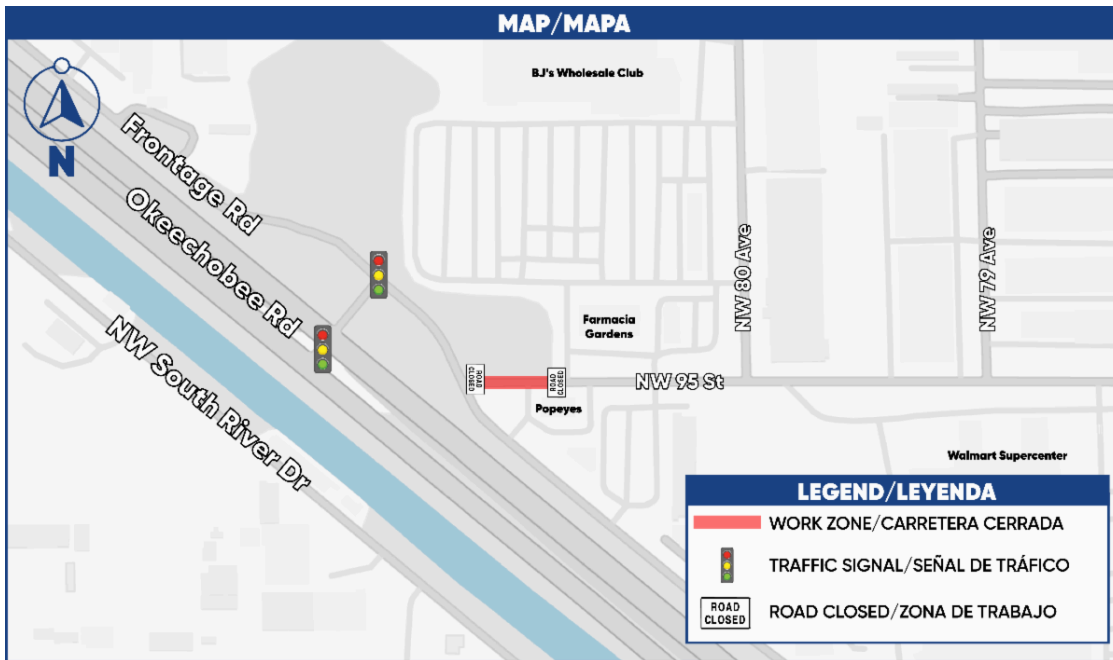


**COMING SOON: CONTINUOUS LANE CLOSURE ALONG NW 95 ST BETWEEN FRONTAGE RD AND NW 80 AVE**

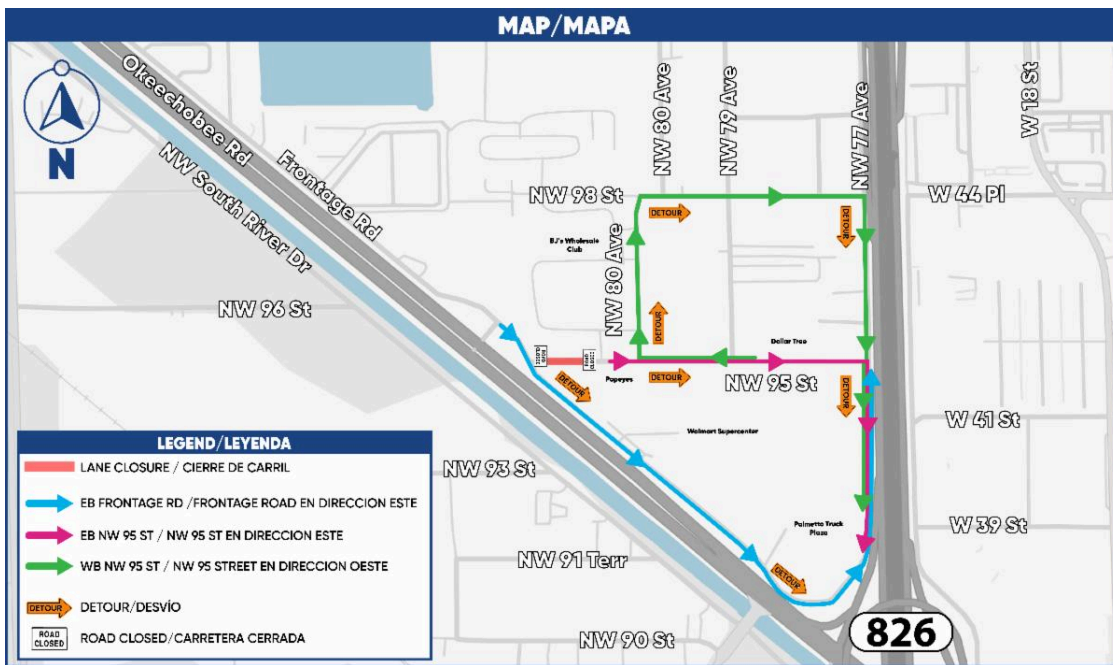
Starting on **Monday, June 15, 2026, at 9 p.m.**, travel lanes in both directions along NW 95 Street between Frontage Road and NW 80 Avenue will be closed to traffic continuously for three weeks. Travel lanes are expected to reopen to traffic on **Friday, July 3, 2026, at 5:30 a.m.**

This closure is necessary to allow crews to reconstruct NW 95 Street and pour the concrete pavement. Please use caution and follow the posted signage. Detours will be in place.

# NW 95 Street Work Zone



Detour Map



## ONGOING CONSTRUCTION ACTIVITIES

### Segment Three: From east of NW 87 Ave to NW 74 St, including Palmetto Expy.

- Performing drainage work along S.R. 25/U.S. 27/Okeechobee Rd, Frontage Rd, NW South River Dr, and NW 79 Ave.
- Installing and performing the following:
  - Sidewalk, excavation, light pole bases and conduits, and signalization work along Frontage Rd.
  - Excavation, lighting, and temporary signalization along Okeechobee Rd.
  - Clearing and grubbing along the canal between NW 95 St and NW 79 Ave for roadway widening.
- Bridge construction at:

- Okeechobee Rd and NW 79 Ave.
- Bridge foundations along NW South River Dr between NW 79 Avenue and southbound S.R. 826/Palmetto Expy. on ramp.
- NW South River Dr. and northbound S.R. 826/Palmetto Expy. off ramp.
- MSE wall for southbound S.R. 826/Palmetto Expy. on ramp.
- Bridge foundations along eastbound Okeechobee along the C-6 Canal between NW 95 St and S.R. 826.

During this time, single lane closures may take place along Frontage Rd and Okeechobee Rd in both directions.

Please note, utility companies are also performing relocations efforts along:

- South River Drive

### **General Lane Closures**

Closures may take place during the following hours:

- 9 a.m. to 3:30 p.m. weekdays and weekends.
- 9 p.m. to 5:30 a.m. on weekdays.
- 11 p.m. to 7:30 a.m. on weekends.

### **Continuous Lane Closures/Traffic Shifts**

- Lane closure along southbound NW South River Dr between NW 91 Terr and NW 79 Ave.
- Southbound travel lanes along the NW 79 Ave bridge are reduced to two lanes.
- One northbound thru lane and one right-turn lane along NW South River Drive at the northbound S.R. 826/Palmetto Expressway off-ramp are removed.

***PLEASE NOTE THAT SCHEDULES MAY CHANGE DUE TO WEATHER OR UNEXPECTED CONDITIONS.***

---

### **[PLAN YOUR COMMUTE!](#)**

View the corridor wide traffic patterns and lane closures by clicking below:

[Online Map](#)

---

### **[FOR MORE INFORMATION](#)**

Contact Community Outreach Specialist Veronica Briceno at [veronica.briceno@dot.state.fl.us](mailto:veronica.briceno@dot.state.fl.us) or at (954) 548-2754

Drivers are encouraged to log onto [www.fl511.com](http://www.fl511.com) to get real-time traffic and lane closure information.

[Corridor Wide Website](#)



[Unsubscribe](#) | [Constant Contact Data Notice](#)