



Florida Department of Transportation
DISTRICT SIX CONSTRUCTION
Miami-Dade & Monroe counties



State Road (S.R.) 25/U.S. 27/Okeechobee Road Corridor Wide Construction Update

Below is a list of upcoming and ongoing construction activities and lane closure information for each project segment.

UPCOMING: NIGHTTIME CLOSURE ALONG NORTHBOUND S.R. 826/PALMETTO EXPRESSWAY

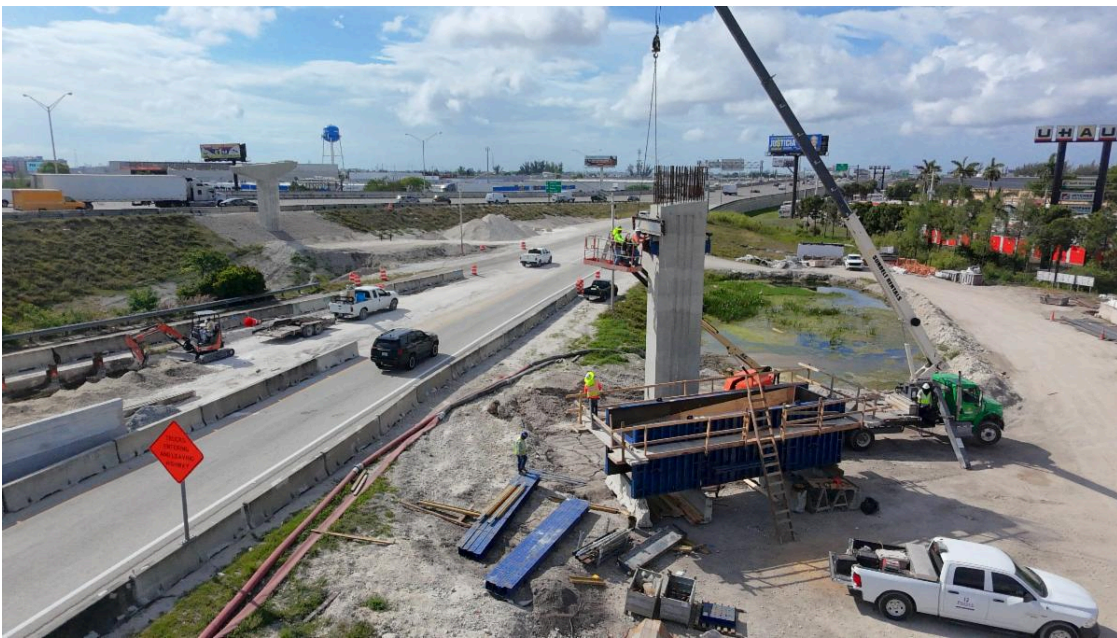
One northbound lane along State Road (S.R.) 826/Palmetto Expressway between NW 103 Street and S.R. 25/U.S. 27/Okeechobee Road will be closed starting at **9 p.m. on Thursday, May 21, 2026**. A second northbound lane will close at 11 p.m.

These closures are necessary to allow crews to install Intelligent Transportation System (ITS) poles. Both lanes will reopen to traffic at **5 a.m. on Friday, May 22, 2026**.

PROGRESS PHOTOS

Ramp B: Eastbound Okeechobee Road to
Southbound S.R. 826/Palmetto Expressway.





Frontage Road and Okeechobee Road



ONGOING CONSTRUCTION ACTIVITIES

Segment Three: From east of NW 87 Ave to NW 74 St, including Palmetto Expy.

- Performing drainage work along S.R. 25/U.S. 27/Okeechobee Rd, Frontage Rd, NW South River Dr, and NW 79 Ave.
- Installing and performing the following:
 - Sidewalk, excavation, light pole bases and conduits, and signalization work along Frontage Rd.
 - Excavation, lighting, and temporary signalization along Okeechobee Rd.

- Clearing and grubbing along the canal between NW 95 St and NW 79 Ave for roadway widening.
- Bridge construction at:
 - Okeechobee Rd and NW 79 Ave.
 - Bridge foundations along NW South River Dr between NW 79 Avenue and southbound S.R. 826/Palmetto Expy. on ramp.
 - NW South River Dr. and northbound S.R. 826/Palmetto Expy. off ramp.
 - MSE wall for southbound S.R. 826/Palmetto Expy. on ramp.

During this time, single lane closures may take place along Frontage Rd and Okeechobee Rd in both directions.

Please note, utility companies are also performing relocations efforts along:

- South River Drive

General Lane Closures

Closures may take place during the following hours:

- 9 a.m. to 3:30 p.m. weekdays and weekends.
- 9 p.m. to 5:30 a.m. on weekdays.
- 11 p.m. to 7:30 a.m. on weekends.

Continuous Lane Closures/Traffic Shifts

- Lane closure along southbound NW South River Dr between NW 91 Terr and NW 79 Ave.
- Southbound travel lanes along the NW 79 Ave bridge are reduced to two lanes.
- One northbound thru lane and one right-turn lane along NW South River Drive at the northbound S.R. 826/Palmetto Expressway off-ramp are removed.

PLEASE NOTE THAT SCHEDULES MAY CHANGE DUE TO WEATHER OR UNEXPECTED CONDITIONS.

[PLAN YOUR COMMUTE!](#)

View the corridor wide traffic patterns and lane closures by clicking below:

[Online Map](#)

[FOR MORE INFORMATION](#)

Contact Community Outreach Specialist Veronica Briceno at veronica.briceno@dot.state.fl.us or at (954) 548-2754

Drivers are encouraged to log onto www.fl511.com to get real-time traffic and lane closure information.

[Corridor Wide Website](#)



[Unsubscribe](#) | [Constant Contact Data Notice](#)