



Florida Department of Transportation
DISTRICT SIX CONSTRUCTION
Miami-Dade & Monroe counties



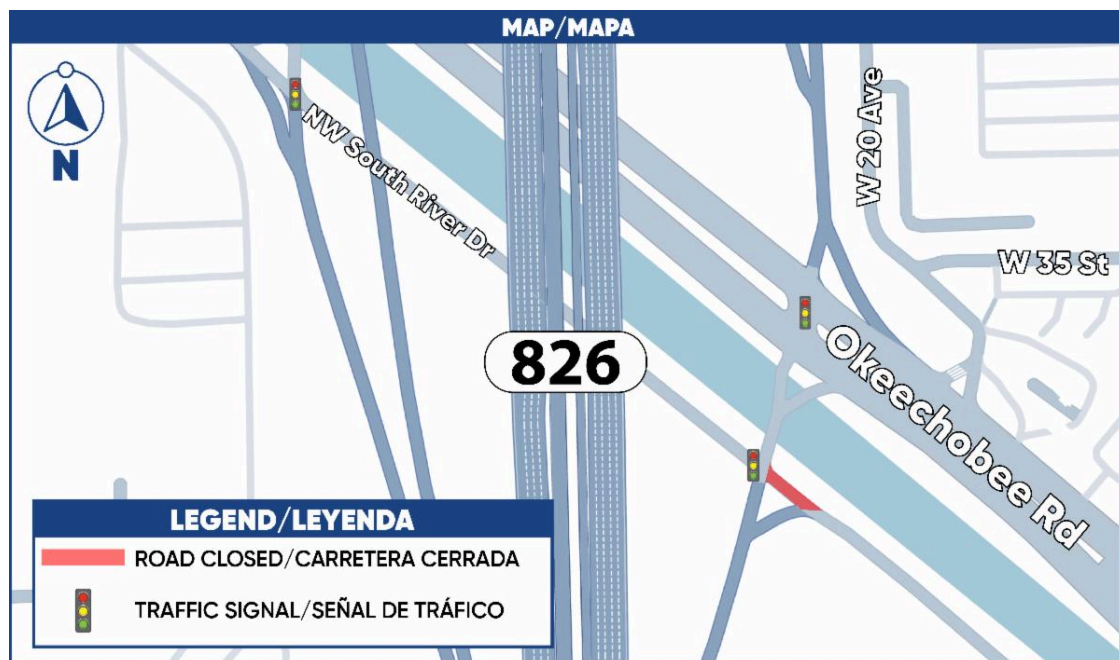
State Road (S.R.) 25/U.S. 27/Okeechobee Road Corridor Wide Construction Update

Below is a list of upcoming and ongoing construction activities and lane closure information for each project segment.

NIGHTTIME CLOSURE ALONG NW SOUTH RIVER DRIVE

Crews continue bridge demolition over the northbound S.R. 826/Palmetto Expressway off-ramp bridge to S.R. 27/U.S. 25/Okeechobee Road. To complete this work, travel lanes in both directions along NW South River Drive between the northbound S.R. 826/Palmetto Expressway off ramp and W 18 Avenue will be closed **until April 10, 2026**. Travel lanes will be closed nightly at 11 p.m. and reopen daily by 5:30 a.m. the following day.

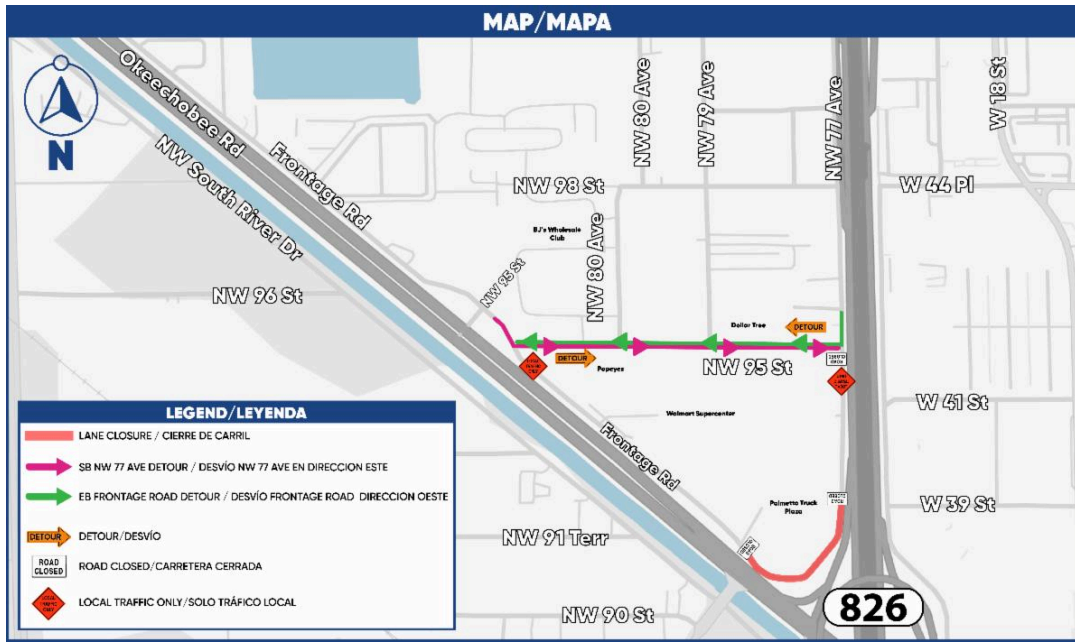
For the complete traffic pattern, click [here](#).



FULL CLOSURE ALONG FRONTAGE ROAD BETWEEN NW 79 AVENUE AND NW 77 AVENUE

Travel lanes will be closed in both directions along Frontage Road between NW 79 Avenue and NW 77 Avenue from **11 p.m. on Friday, April 10, through 5:30 a.m. on**

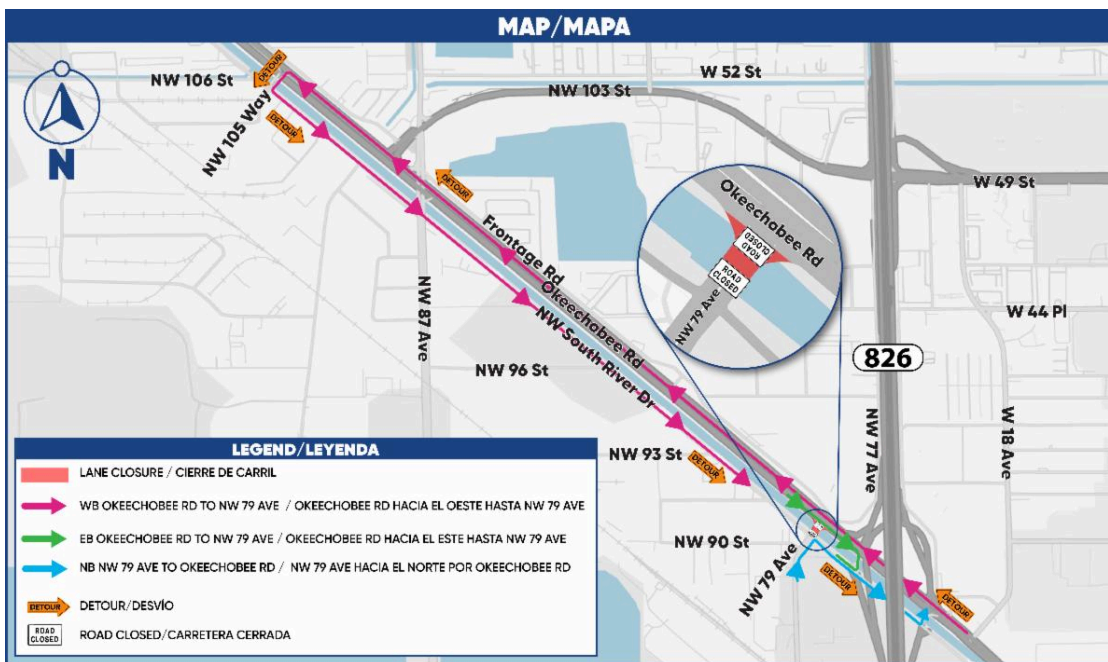
Monday, April 13, 2026, for roadway reconstruction. Detours will be in place and access to driveways and businesses will be maintained at all times.



COMING SOON: NW 79 AVENUE BRIDGE FULL CLOSURE

Starting at **11 p.m., Monday, April 13, 2026**, travel lanes will be closed in both directions along the NW 79 Avenue bridge between S.R. 25/U.S. 27/Okeechobee Road and NW South River Drive. This closure is necessary to allow crews to remove and relocate construction materials.

Lanes will reopen at 5:30 a.m. on Tuesday, April 14, 2026. Detours will be in place.



COMING SOON: FRONTAGE ROAD TRAFFIC SHIFT

All lanes along Frontage Road between NW 95 Street and NW 77 Avenue will be shifted to their original alignment onto permanent pavement starting on **Monday, April 20, 2026**.

ONGOING CONSTRUCTION ACTIVITIES

Segment Three: From east of NW 87 Ave to NW 74 St, including Palmetto Expy.

- Performing drainage work along S.R. 25/U.S. 27/Okeechobee Rd, Frontage Rd, NW South River Dr, and NW 79 Ave.
- Installing and performing the following:
 - Curb and gutter, sidewalk, excavation, roadway base, barrier walls, and signalization work along Frontage Rd.
 - Backfilling, barrier walls, lighting, excavation, temporary paving, and temporary signalization along Okeechobee Rd.
 - Clearing and grubbing along the canal between NW 95 St and NW 79 Ave for roadway widening.
- Bridge construction at:
 - Okeechobee Rd and NW 79 Ave.
 - Bridge foundations along NW South River Dr between NW 79 Avenue and southbound S.R. 826/Palmetto Expy. on ramp.
 - NW South River Dr. and northbound S.R. 826/Palmetto Expy. off ramp.
 - MSE wall for southbound S.R. 826/Palmetto Expy. on ramp.

During this time, single lane closures may take place along Frontage Rd and Okeechobee Rd in both directions.

Please note, utility companies are also performing relocations efforts along:

- Frontage Rd.

General Lane Closures

Closures may take place during the following hours:

- 9 a.m. to 3:30 p.m. weekdays and weekends.
- 9 p.m. to 5:30 a.m. on weekdays.
- 11 p.m. to 7:30 a.m. on weekends.

Continuous Lane Closures/Traffic Shifts

- Lane closure along southbound NW South River Dr between NW 91 Terr and NW 79 Ave.
- Southbound travel lanes along the NW 79 Ave bridge are reduced to two lanes.
- One northbound thru lane and one right-turn lane along NW South River Drive at the northbound S.R. 826/Palmetto Expressway off-ramp are removed.

PLEASE NOTE THAT SCHEDULES MAY CHANGE DUE TO WEATHER OR UNEXPECTED CONDITIONS.

PLAN YOUR COMMUTE!

View the corridor wide traffic patterns and lane closures by clicking below:

[Online Map](#)

FOR MORE INFORMATION

Contact Community Outreach Specialist Veronica Briceno at veronica.briceno@dot.state.fl.us or at (954) 548-2754

Drivers are encouraged to log onto www.fl511.com to get real-time traffic and lane closure information.

Corridor Wide Website



Florida Department of Transportation, District Six | 1000 NW 111 Avenue | Miami, FL 33172 US

[Unsubscribe](#) | [Constant Contact Data Notice](#)