



# Interstate 195

## Project Development & Environment (PD&E) Study

I-195/SR 112 From NW 12<sup>th</sup> Ave to SR 907/Alton Road  
FPID No. 440228-2

# Community Advisory Group Meeting #2

February 22, 2024

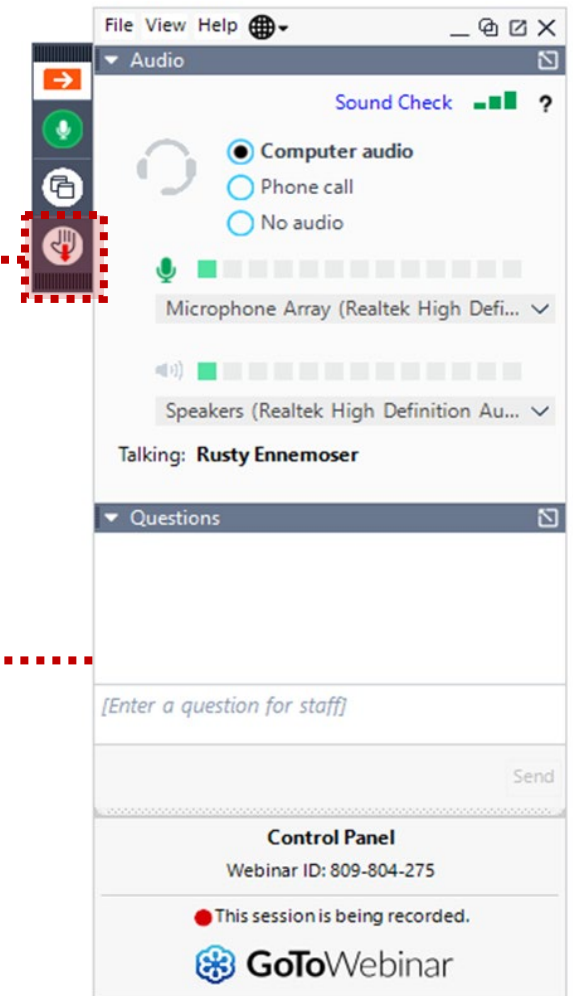


# Rules of Engagement

Virtual attendees are **automatically muted** to start the meeting

To provide comments during open discussion period:

- Call 1 (562) 247-8422; access code: 181-987-895
- Use “Raise hand” button during comment period, you will be unmuted in order of raising hands
- Submit comments via the “Questions” Box



If you are having technical difficulties, please contact:

e: [manny@graph-code.com](mailto:manny@graph-code.com)

p: 786-352-4351

# Presenters



FDOT Project Manager:  
Ivette Funtanellas, P.E.



Consultant Project Manager:  
Robert Linares, P.E.



Environmental Scientist:  
Caitlin Hill



Consultant Project Engineer:  
Stefan Escanes, P.E., PTOE



Community Outreach Specialist:  
Paulette Summers

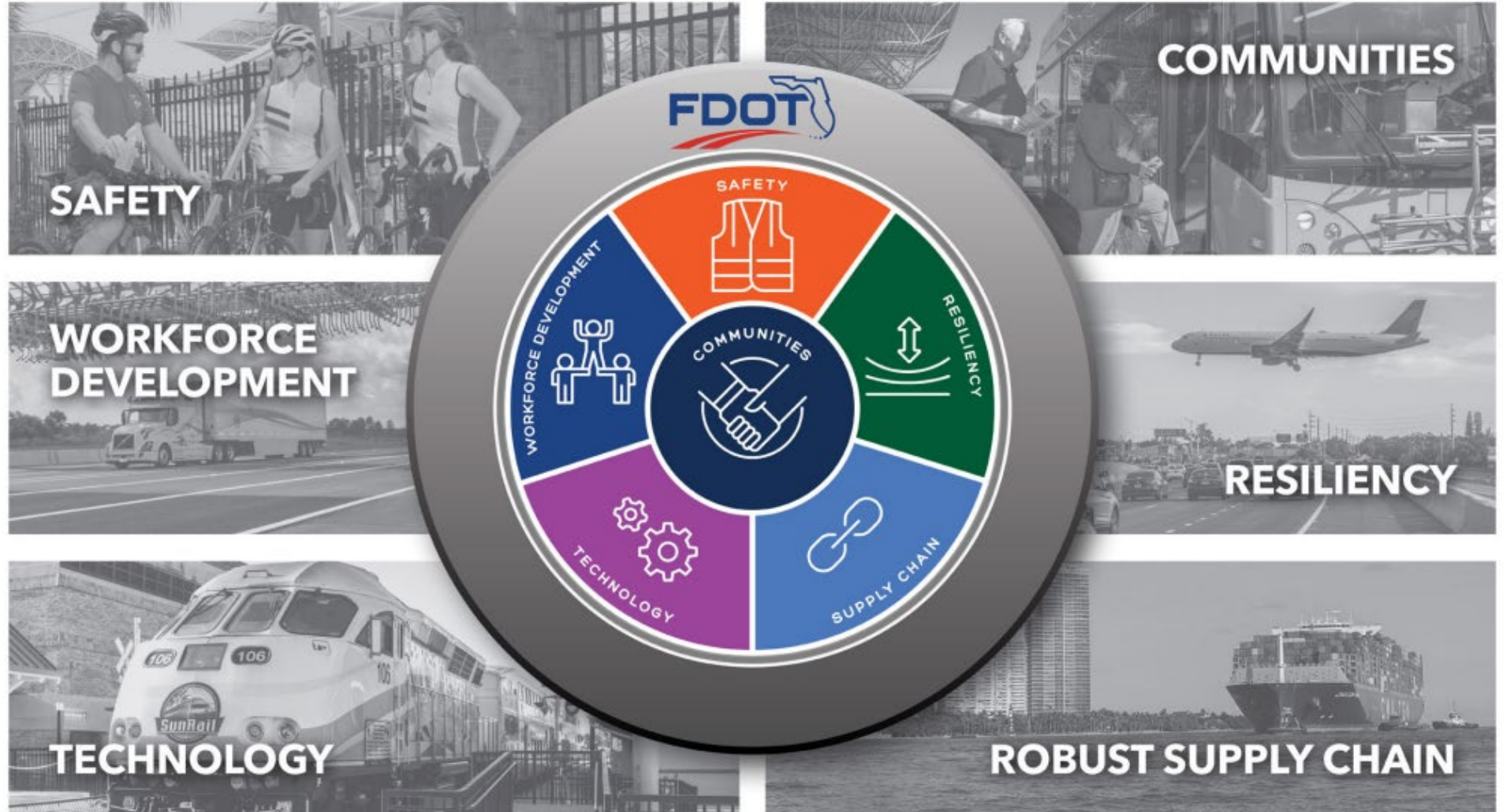
# Title VI of the Civil Rights Act of 1964

*Public participation is solicited without regard to race, color, national origin, age, sex, religion, disability, or family status. Persons wishing to express concerns relative to FDOT compliance with Title VI may do so by contacting:*

Tish Burgher  
**District Six Title VI Coordinator**  
1000 NW 111 Avenue  
Miami, Florida 33172  
(305) 470-5277  
Tish.Burgher@dot.state.fl.us



Stefan Kulakowski  
**State Title VI Coordinator**  
605 Suwannee Street, Mail Station 65  
Tallahassee, Florida 32399-0450  
(850) 414-4742  
Stefan.Kulakowski@dot.state.fl.us

*All inquiries or concerns will be handled according to FDOT procedure and in a prompt and courteous manner.*



# Study Area



-  Address Operational Deficiencies
-  Enhance System Linkage/Regional Connectivity

-  Enhance Multimodal Connectivity

-  Improve Safety

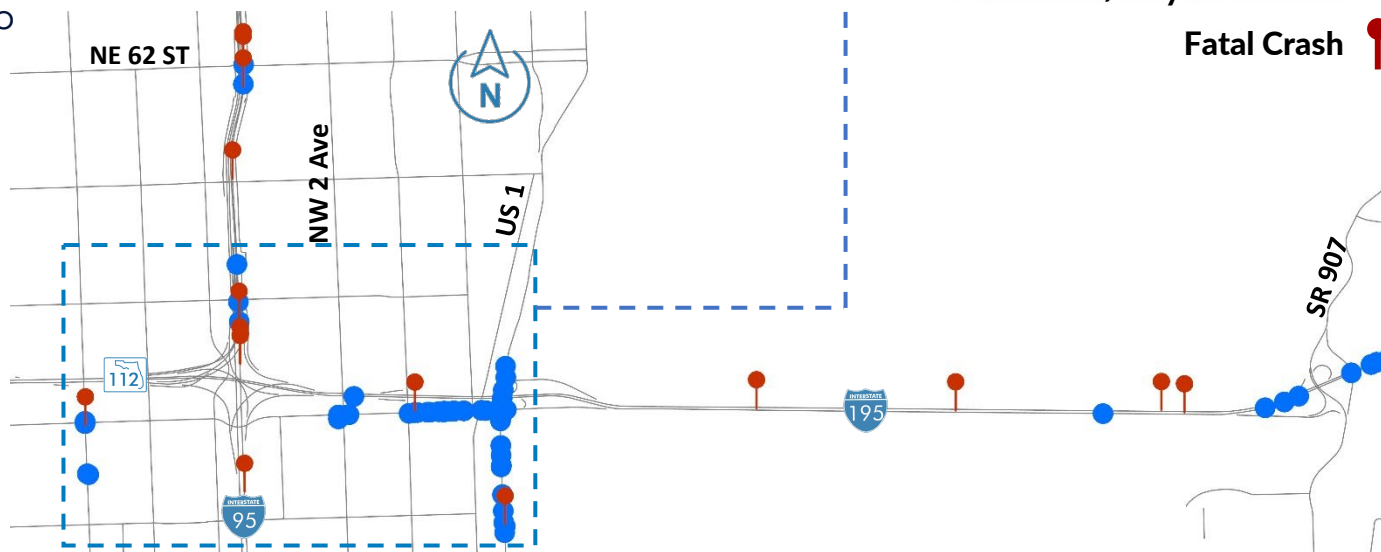
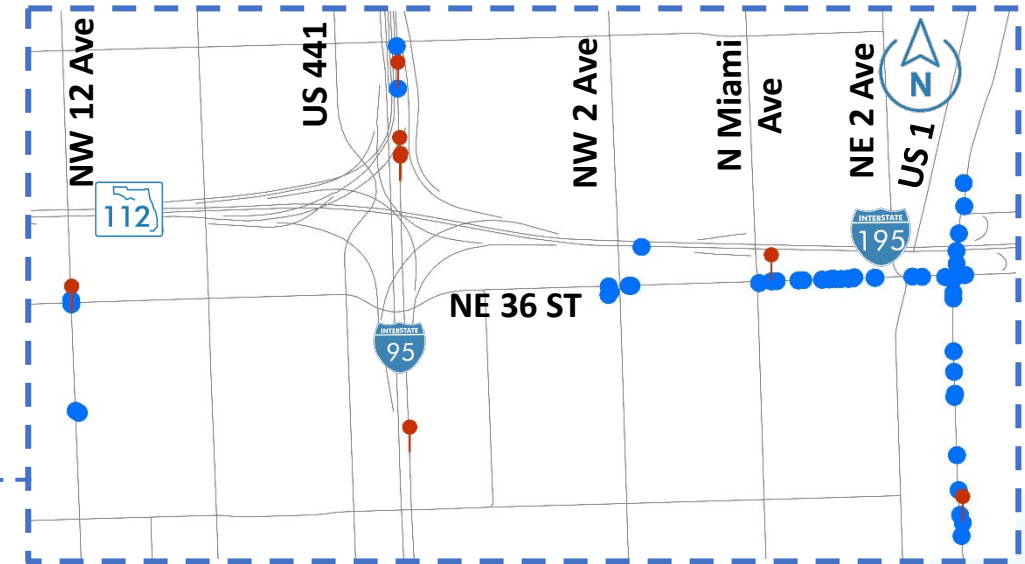
# Existing Conditions: Safety

## Crash Data

- 7,899 Total 5-Year Crashes (2017-2021)
- Crash Clusters
  - I-95 (within the I-195 interchange): 759 Crashes
  - I-195 at US-1 Interchange: 409 Crashes
  - I-195 from Alton Rd Ramps to 41<sup>st</sup> Street: 537 Crashes

## Safety Analysis

- Safety Analysis Guidebook for PD&E Studies
- Quantitative Safety Analysis per Interchange Access Request User Guide (IARUG)
- Target Zero

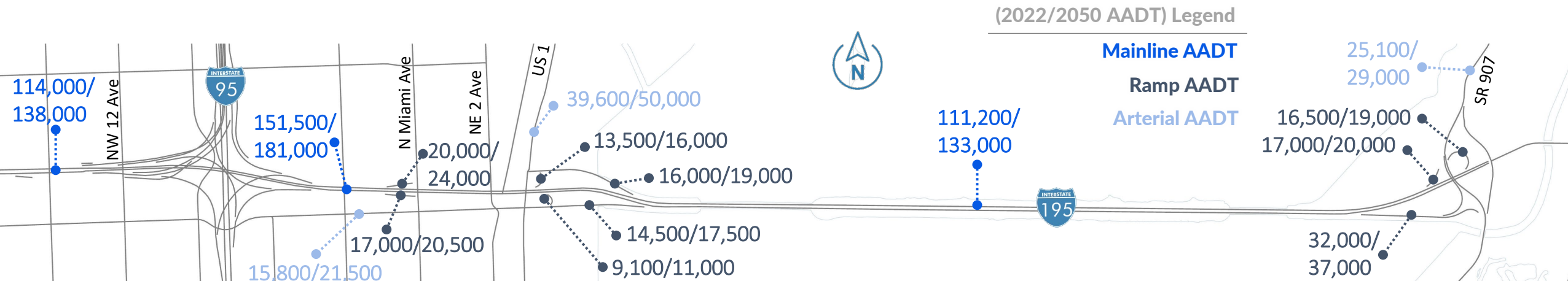


# Traffic Analysis

- Traffic Data Collected - Fall-Winter 2022
- Traffic Projections – Design Year 2050
- Traffic Analysis – On-going
  - I-195 Mainline & Interchange Improvements
  - Surface Street Operational Improvements
  - Transit Travel Time
- Systems Interchange Modification Report (SIMR)



Looking West along I-195 at N. Miami Ave





# Alternatives Development

## No Build

Assumes no improvements are made and does not address any of the corridor needs

## Transportation Systems Management and Operations (TSM&O)

## Build Alternatives

PD&E Alternatives build off the Corridor Planning Study Refined Build Concept and evaluate:

- Direct Connections to the I-95 Express Lanes
- Interchange Improvements
  - N Miami Avenue
  - Biscayne Boulevard
  - SR 907/ Alton Road
- Surface Street Improvements
- Multimodal
  - Enhance transit opportunities
  - Dedicated pedestrian and bicycle facilities



# Alternatives Selection Process

1

## Initial Evaluation

> No Build > TSM&O/ITS > Major Alternatives

2

## Tier 1: Develop Conceptual Alternatives

### Systemwide Concepts

> Express Lanes Connectivity  
> Transit Enhancements  
> Multimodal Enhancements

### Interchange Specific Concepts

> I-195 at I-95 > I-195 at Biscayne Blvd  
> I-195 at N. Miami Ave > I-195 at Alton Rd

3

## Tier 2: Build Alternatives Evaluation

> Alternative 1 > Alternative 2 > Alternatives Public Information Meeting

4

## Tier 3: Alternative Refinement Evaluation

> Preferred Alternative > Public Hearing

# Alternatives Improvements Overview

- Four (4) Focus Areas of Improvements

## Focus Area 1 (FA 1)

I-95 Interchange

NW 12 AVE



## Focus Area 2 (FA 2)

N. Miami Ave/Biscayne Blvd

N Miami Ave



Biscayne Blvd

NE 36 St



## Focus Area 3 (FA 3)

Causeway



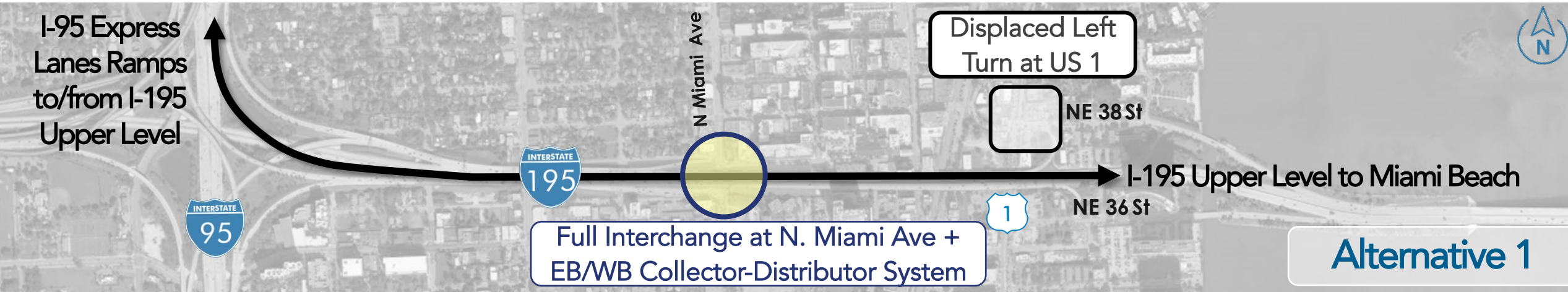
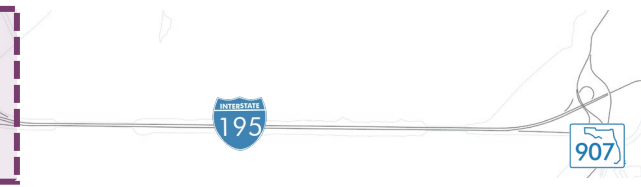
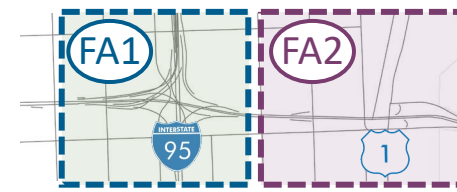
## Focus Area 4 (FA 4)

Alton Rd/Mt. Sinai

Alton Rd



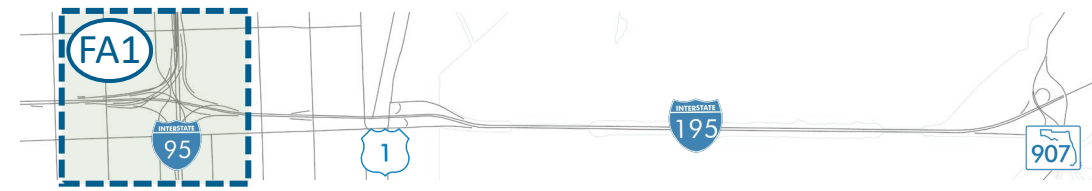
# Alternatives Improvement Overview: Focus Areas 1 and 2



Bus-on-Shoulder  
Upper & Lower Levels



# Alternative 1: I-195/SR 112 at I-95 Interchange Improvements

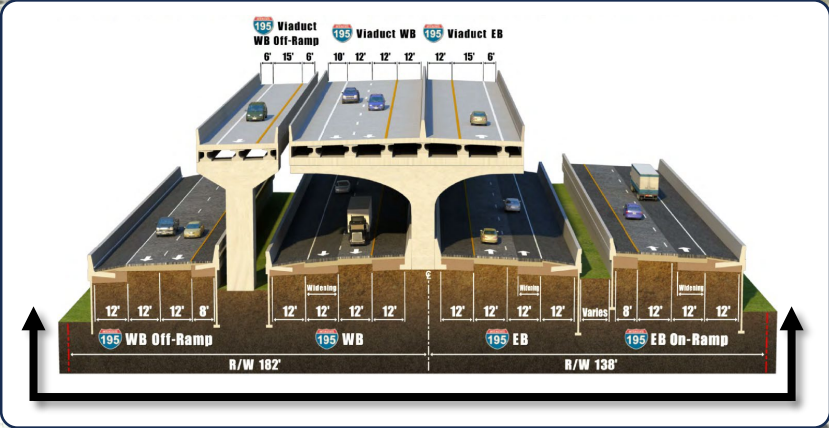


I-95 Express Lanes Connections  
to/from I-195 Upper Level

Westbound I-195 Upper Level  
to I-95 General Purpose

Begin/End Bus-on-Shoulder

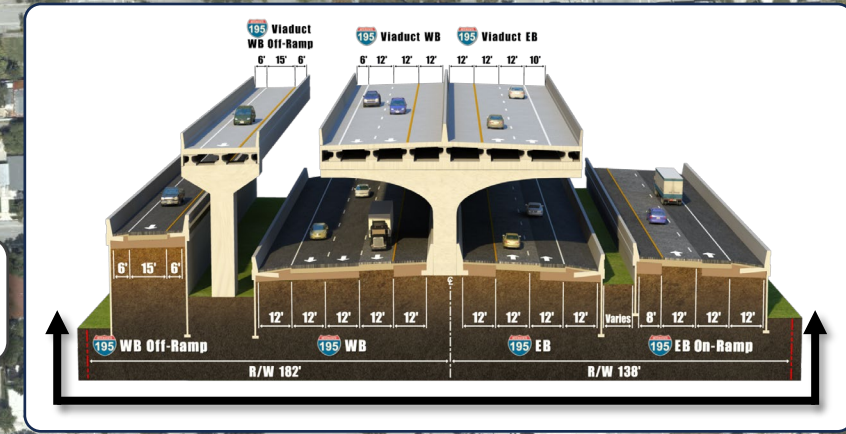
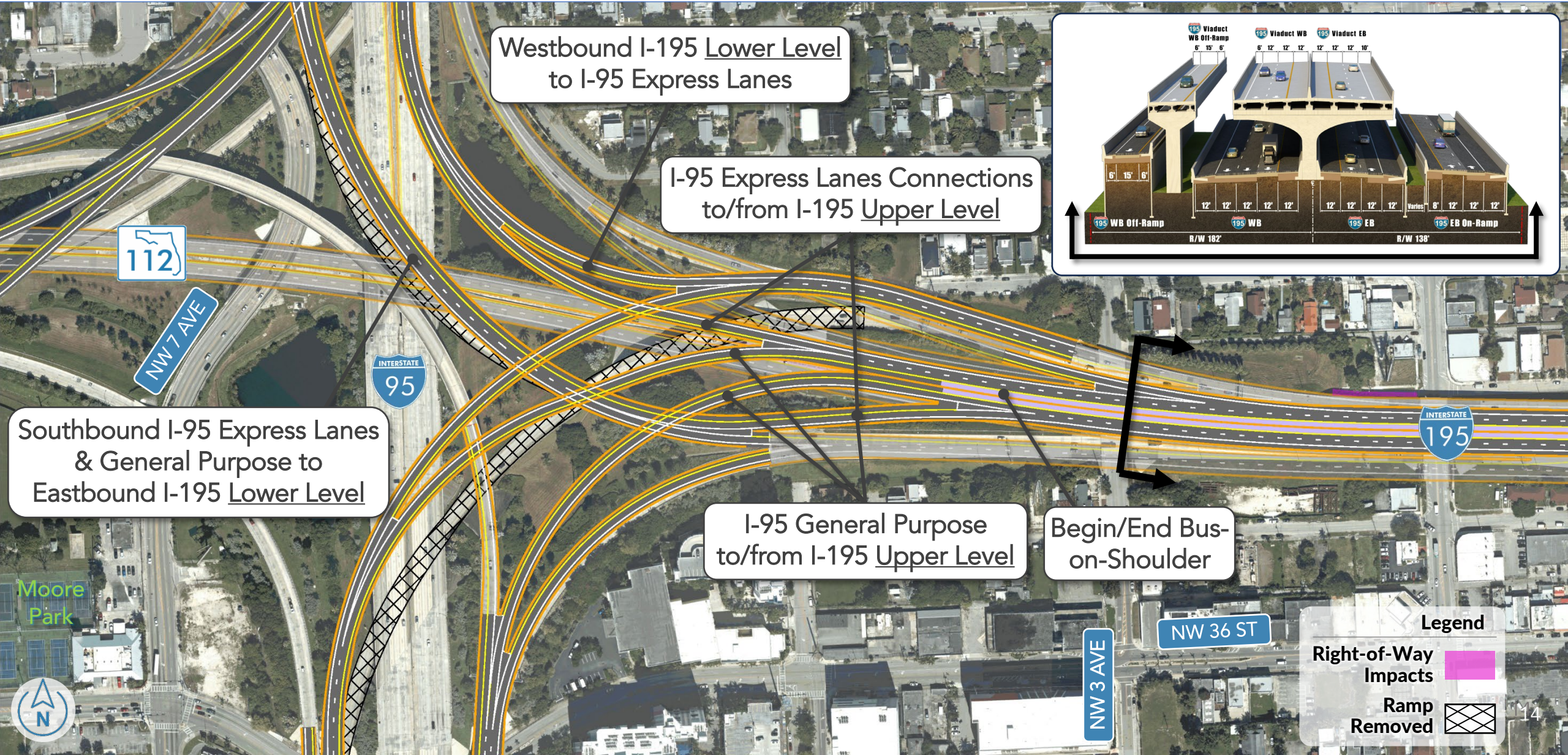
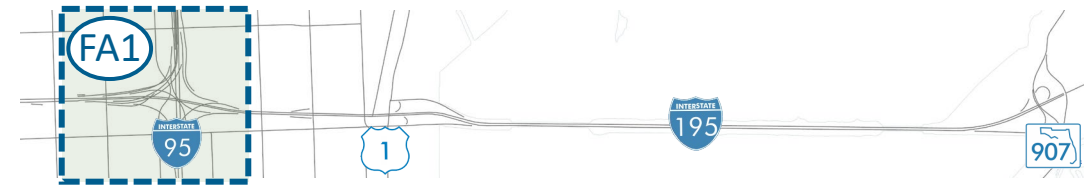
I-95 General Purpose Ramp to  
Eastbound I-195 Upper Level



**Legend**

- Right-of-Way Impacts
- Ramp Removed

# Alternative 2: I-195/SR 112 at I-95 Interchange Improvements



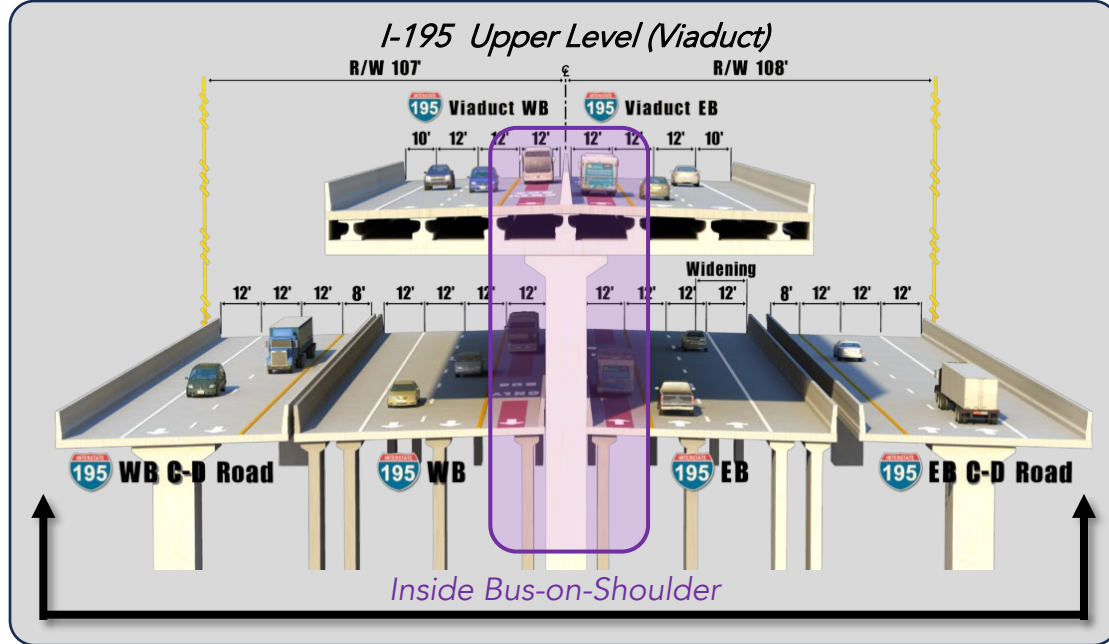
**Legend**

Right-of-Way Impacts

Ramp Removed

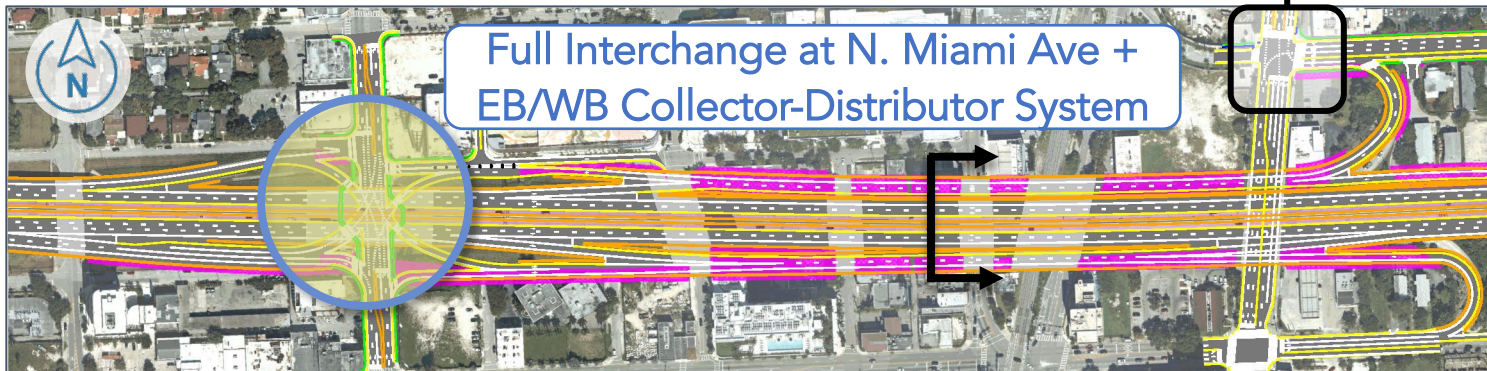
# Alternative 1: N. Miami Avenue & US 1 Improvements

Typical Section with Upper Level and Collector-Distributor System

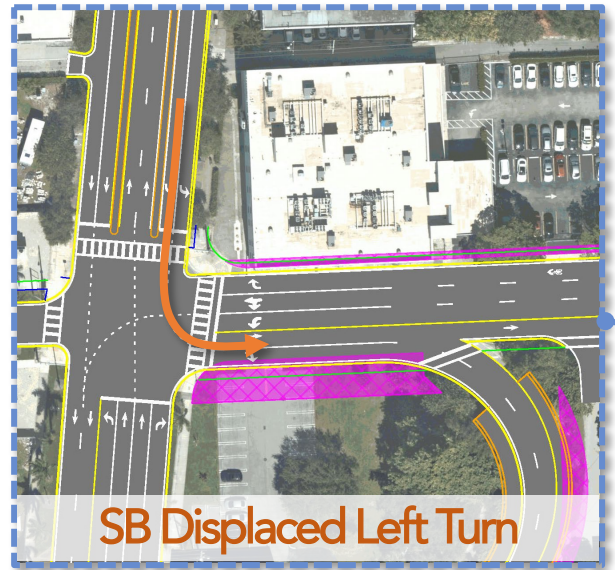


Displaced Left Turn at US 1

Full Interchange at N. Miami Ave +  
EB/WB Collector-Distributor System

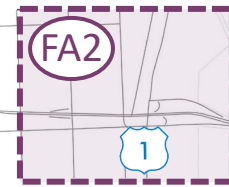


SBL Crossover Intersection



NE 38 ST

# Alternative 2: US 1/Biscayne Blvd Interchange Improvements



**Legend**  
Right-of-Way Impacts

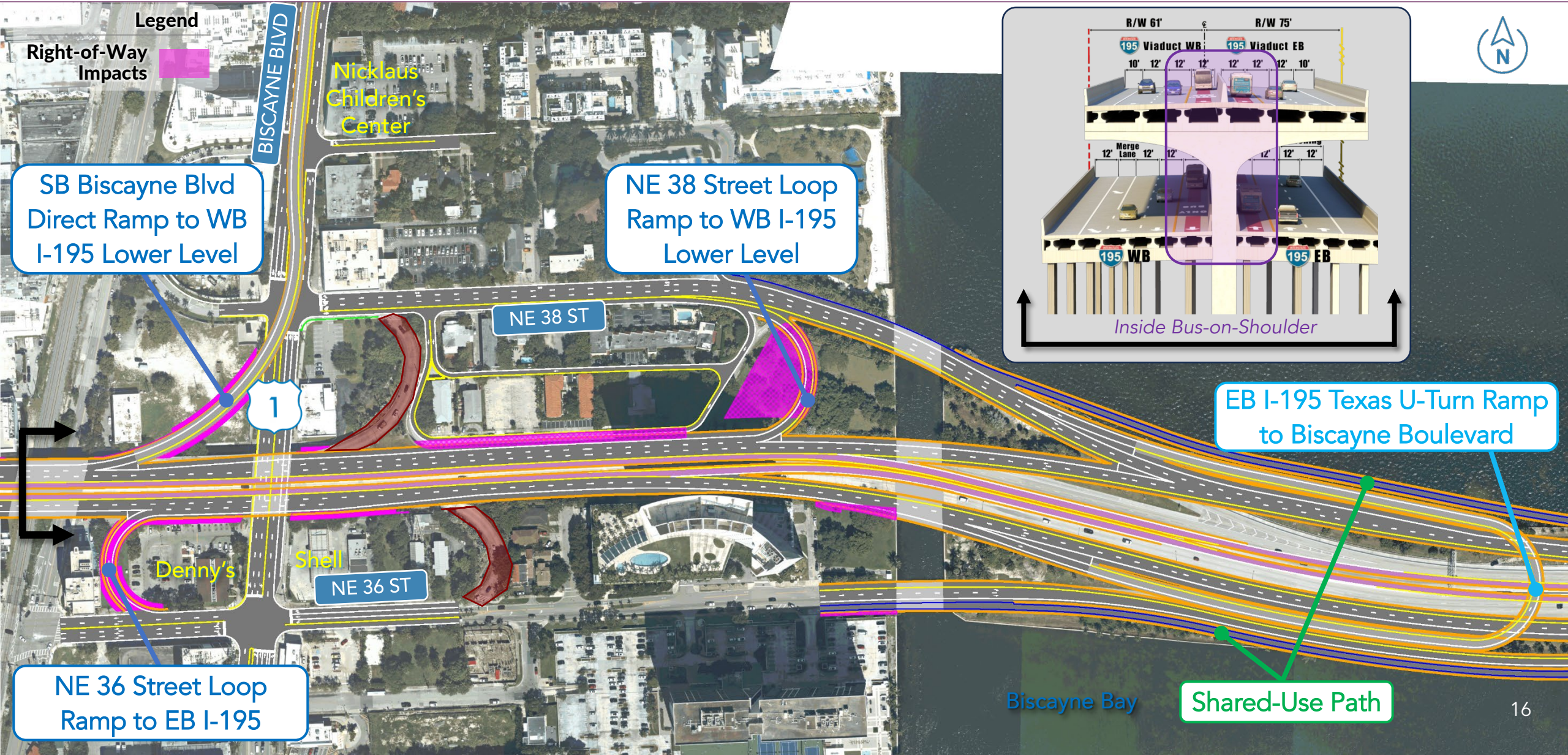
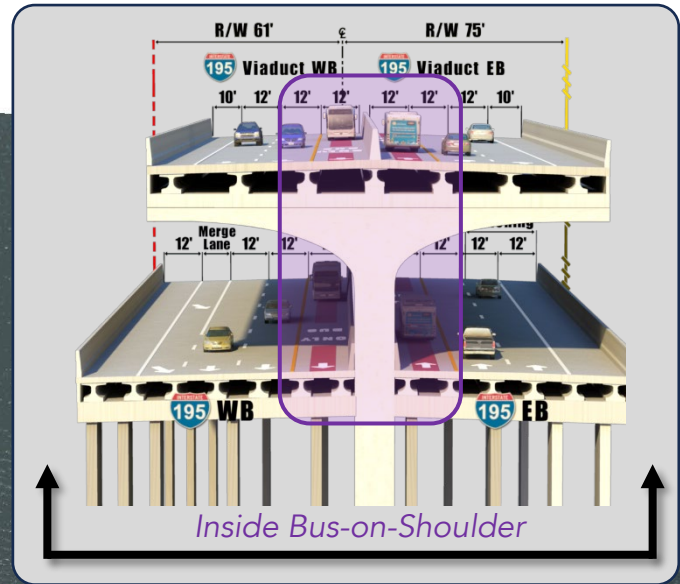
SB Biscayne Blvd  
Direct Ramp to WB  
I-195 Lower Level

NE 38 Street Loop  
Ramp to WB I-195  
Lower Level

EB I-195 Texas U-Turn Ramp  
to Biscayne Boulevard

NE 36 Street Loop  
Ramp to EB I-195

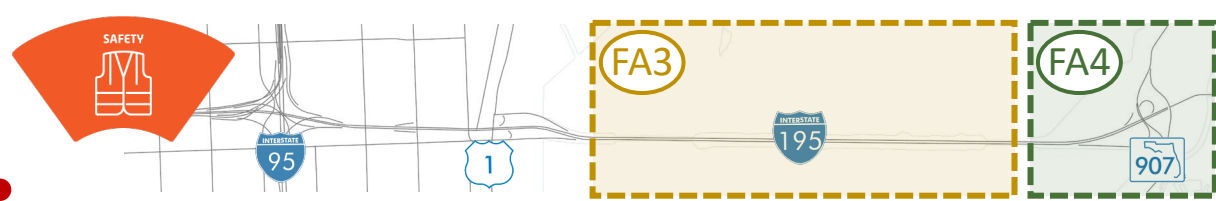
Shared-Use Path



Biscayne Bay



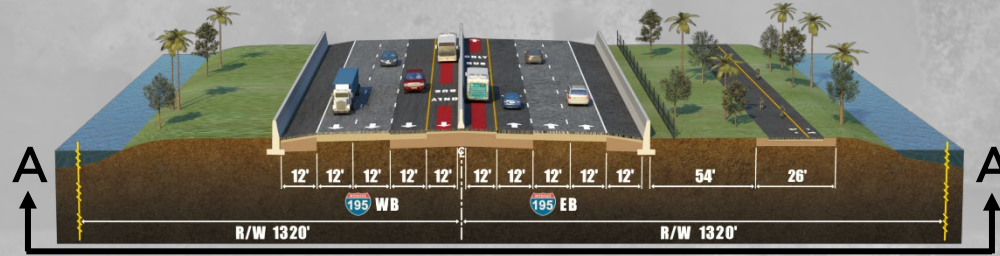
# Alternatives Improvement Overview: Focus Areas 3 and 4



## Alternative 1



Shared-Use Path Crossover



NB Triple Left Turns

WB On-Ramp/  
Mainline Separation

Bus-on-Shoulder

South Side Shared Use-Path

WB On-Ramps Barrier Separation

Bus-on-Shoulder



NB Triple Left Turns

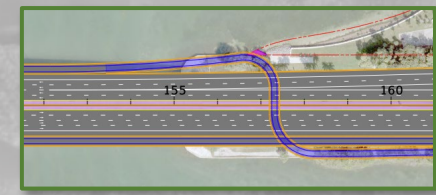
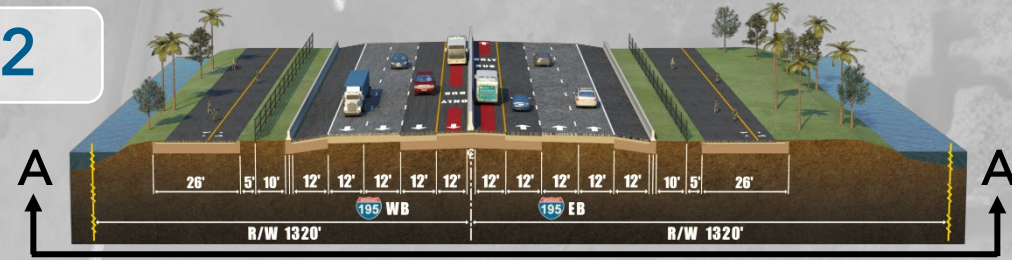
WB On-Ramp/  
Mainline Separation

Bus-on-Shoulder

North & South Side Shared Use-Path

Shared-Use Path Crossover

## Alternative 2



NB Triple Left Turns

WB On-Ramp/  
Mainline Separation

Bus-on-Shoulder

North & South Side Shared Use-Path

Shared-Use Path Crossover

# Engineering Analysis

---

## Drainage:

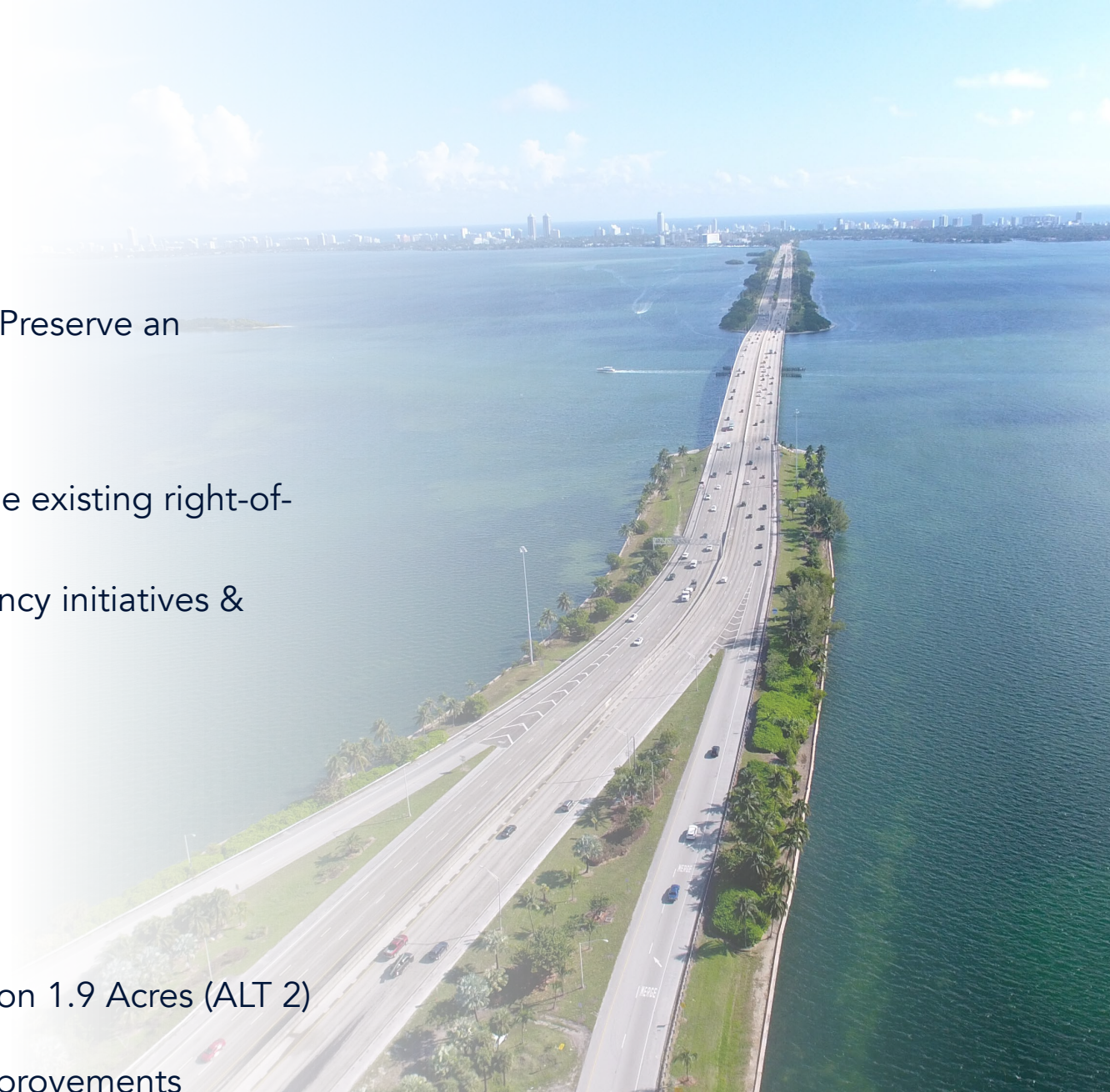
- Stormwater runoff flows into Biscayne Bay Aquatic Preserve an Outstanding Florida Water (OFW)
- 13 total drainage basins within the project area
- Water quality treatment capacity available within the existing right-of-way
- Preparation of High-Water Memorandum for resiliency initiatives & coordination with agencies

## Structures:

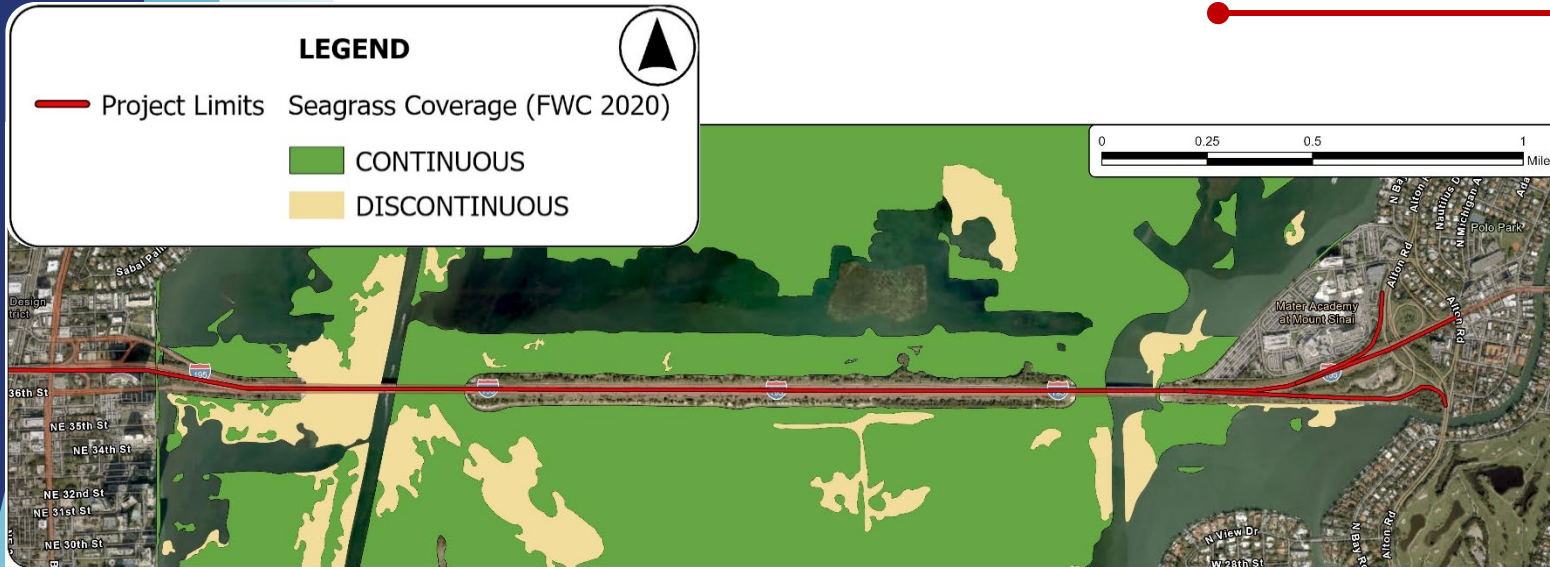
- New I-195 Upper Level (Viaduct)
- 10 to 20 New Interchange Ramps
- Widening of Causeway Bridge(s)

**Right-of-Way:** Impact on 4.8 Acres (ALT 1) and Impact on 1.9 Acres (ALT 2)

**Project Phasing:** Identify short-term and long-term improvements



# Potential Environmental Impacts



## Natural Resources Evaluation

- **Essential Fish Habitat**
  - Seagrass
  - Corals
- **Wildlife and Habitat**
  - Florida Bonneted Bat
  - Biscayne Bay Aquatic Preserve
  - USFWS Consultation Areas
  - Habitat Areas of Particular Concern
  - Critical Habitat (Manatee)
- **Other Surface Waters**
  - Outstanding Florida Water



# Potential Environmental Impacts

## Sociocultural Effects Evaluation

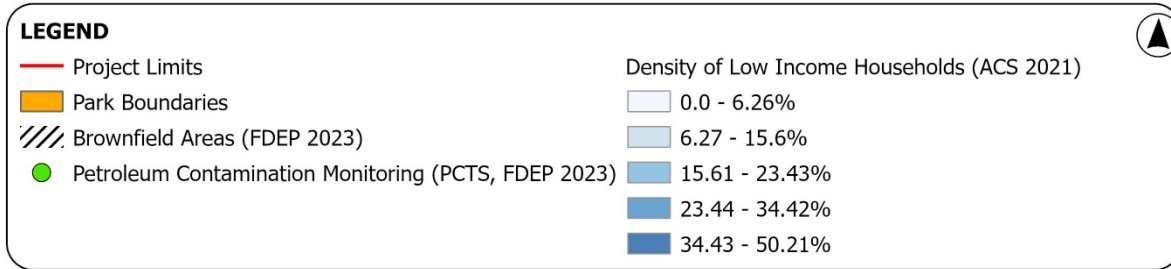
- Protected populations exist within the study area
  - Low Income and Minority

## Recreational Section 4f

- Moore Park and Albert Pallot Park

## Contamination Screening Evaluation

- 2 Brownfield areas and 16 petroleum contamination monitoring sites



# Resiliency

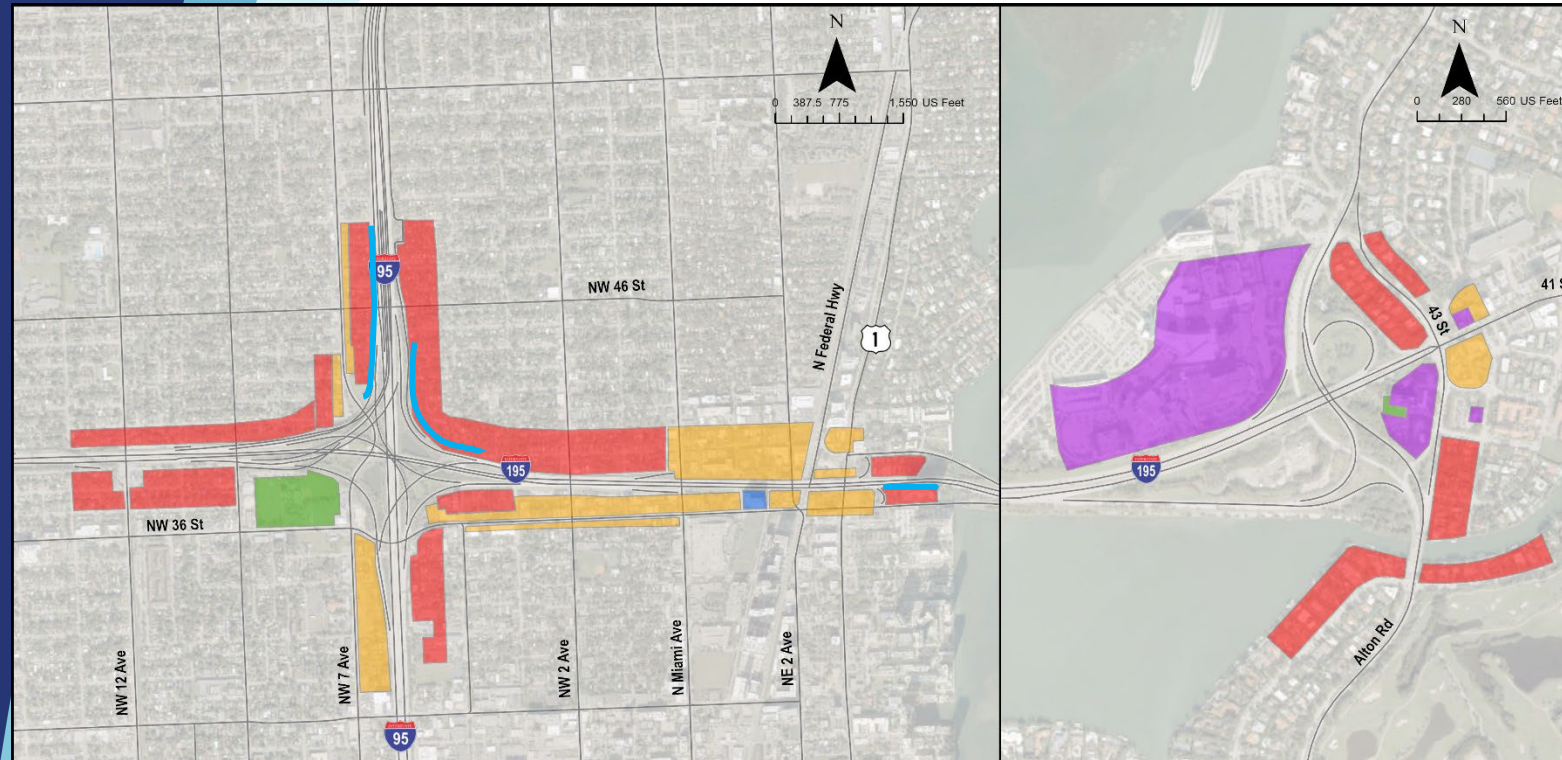
- Resiliency initiatives
  - (USACE, MDC) Back Bay Coastal Storm Risk Management Feasibility Study
  - (MDC) Biscayne Bay Watershed Management Board and Task Force
  - (City of Miami Beach) Citywide Living Shoreline Viability Assessment
  - (MDC, FDEP, Biscayne Bay Aquatic Preserve, The Nature Conservancy) Biological Restoration to Enhance Water Quality
- Identifying resiliency opportunities

**LEGEND**

Potential Resiliency Projects

- Living Seawall (USACE, MDC)
- Living Shoreline (Miami Beach)
- Living Shoreline (USACE, MDC)
- Mangrove Planting Area (Miami Beach)
- Mangrove Restoration (USACE, MDC)
- Venetian Basin Sponge Nursery (MDC, FDEP, FL Sea Grant, TNC)





## LEGEND

### FHWA Noise Activity Categories (Types of Noise Sensitive Sites)

- Category B Exterior Residential
- Category C Exterior Recreational
- Category D Interior
- Category E Exterior Other
- Category B/E Mixed Use
- Existing Noise Walls

## Noise

- Noise Sensitive Areas
  - High rise residential
  - Low density residential
  - Mixed-use residential/commercial
  - Recreational resources
- Alternatives anticipated to impact up to three (3) existing noise barriers

## Next Steps:

- Existing Traffic Noise Monitoring data collection for potentially impacted areas
- Evaluate noise impacts from the project and determine if additional noise abatement is warranted
- Evaluate potential construction noise and vibration impacts

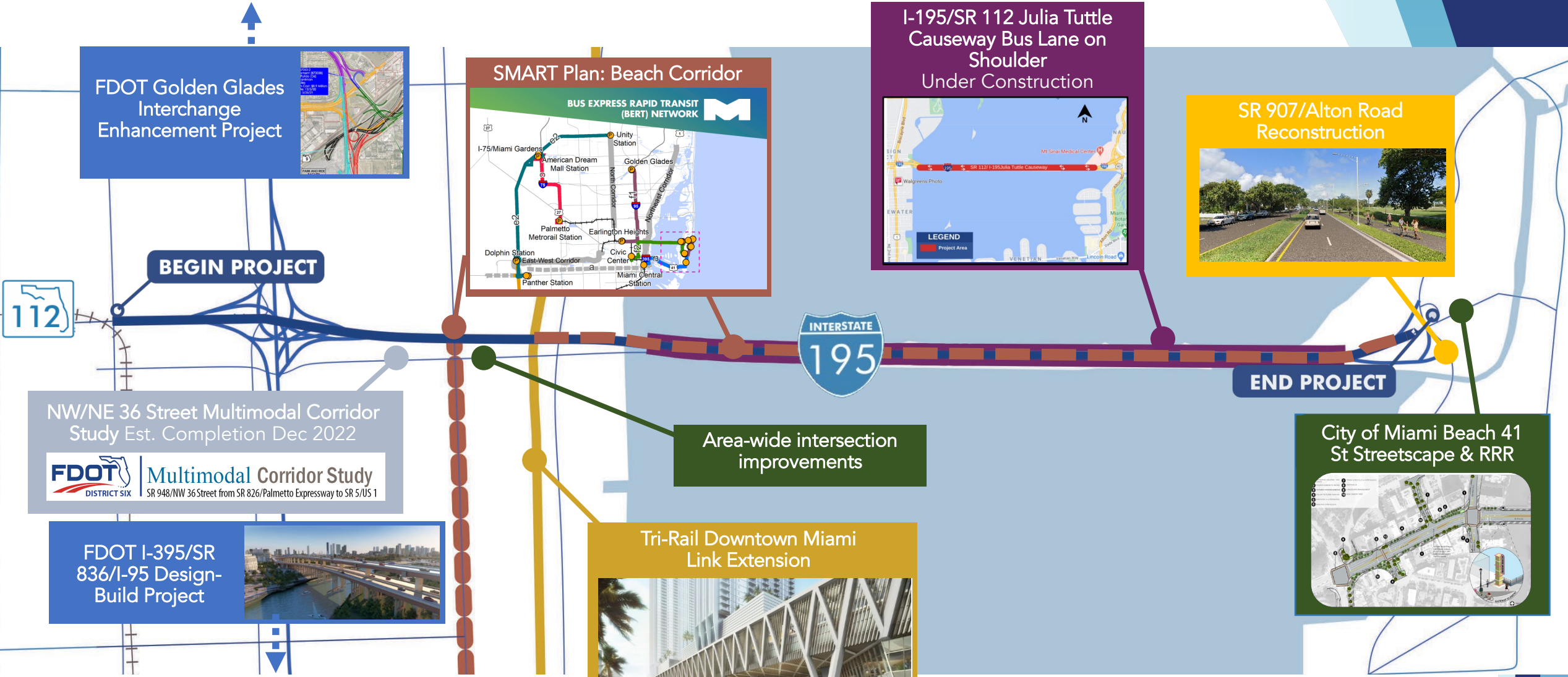
# Public Involvement



- Continue and Expand Outreach Efforts from Corridor Planning Study (CPS)
- Local Agency Coordination
  - City of Miami & Miami Beach
  - Miami-Dade County
  - Miami-Dade TPO
    - Bicycle/Pedestrian Advisory Committee (BPAC) *(February 13, 2024)*
    - Transportation Planning Technical Advisory Committee (TPTAC) *(February 21, 2024)*
    - Transportation Aesthetics Review Committee (TARC) *(February 21, 2024)*
    - Citizens' Transportation Advisory Committee (CTAC) *(April 3, 2024)*
- Project Advisory Team (PAT) and Community Advisory Group (CAG)
  - PAT #1 *(November 2, 2022)*; PAT #2 *(February 15, 2024)*; PAT #3 *(anticipated 4th Quarter 2024/1st Quarter 2025)*
  - CAG #1 *(April 3, 2023)*; CAG #2 *(February 22, 2024)*; CAG #3 *(anticipated 4th Quarter 2024/1st Quarter 2025)*
- Stakeholder Meetings (available upon request)
- Public Meetings
  - Kick-Off Meeting *(February 8, 2023)*
  - Alternatives Public Information Meeting *(February 26 & 28, 2024)*
  - Public Hearing *(anticipated 1st Quarter 2025)*



# Coordination

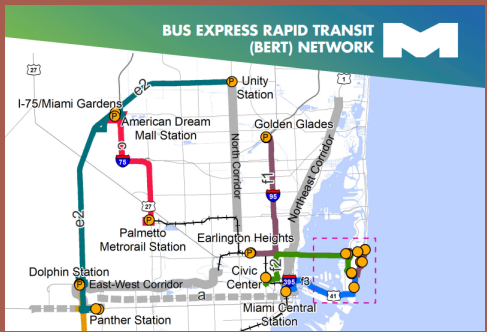


**FDOT Golden Glades Interchange Enhancement Project**



**SMART Plan: Beach Corridor**

BUS EXPRESS RAPID TRANSIT (BERT) NETWORK



**I-195/SR 112 Julia Tuttle Causeway Bus Lane on Shoulder Under Construction**



**SR 907/Alton Road Reconstruction**



**NW/NE 36 Street Multimodal Corridor Study Est. Completion Dec 2022**

**FDOT DISTRICT SIX Multimodal Corridor Study**  
SR 948/NW 36 Street from SR 826/Palmetto Expressway to SR 5/US 1

**FDOT I-395/SR 836/I-95 Design-Build Project**



**Area-wide intersection improvements**

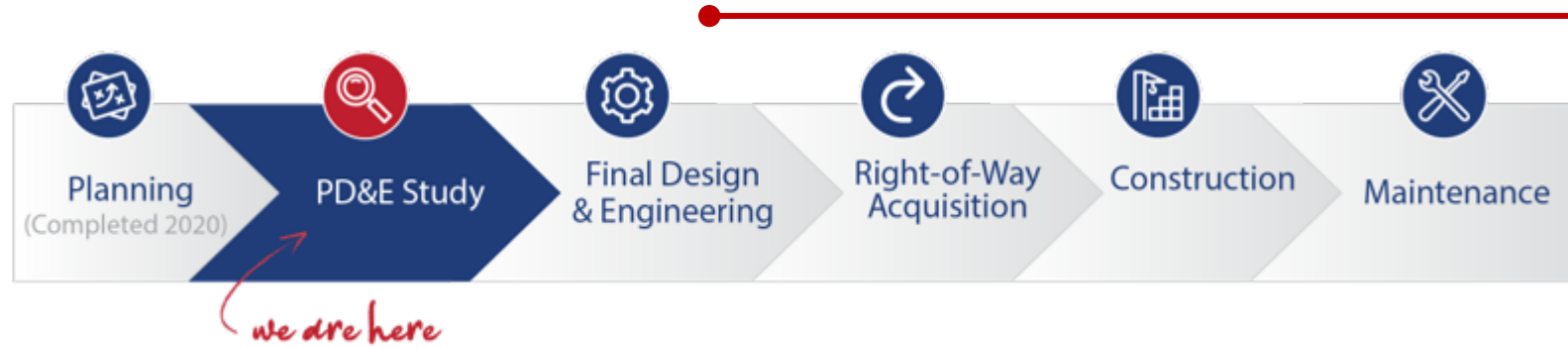
**Tri-Rail Downtown Miami Link Extension**



**City of Miami Beach 41 St Streetscape & RRR**







## PD&E Study Timeline



### Next Steps

- Engineering & Environmental Documentation
- Selection of Preferred Alternative
- Public Hearing (1<sup>st</sup> Quarter 2025)

# Contact Us

## Ivette Funtanellas, P.E.

Project Manager  
FDOT D6  
1000 NW 111 Ave, Rm 6251  
Miami, Florida 33172  
(305) 470-5270

[Ivette.Funtanellas@dot.state.fl.us](mailto:Ivette.Funtanellas@dot.state.fl.us)

## Robert Linares, P.E.

Consultant Project Manager  
Metric Engineering, Inc.  
13940 SW 136<sup>th</sup> St, Suite 200  
Miami, Florida 33186  
(786) 396-2131

[Robert.Linares@metriceng.com](mailto:Robert.Linares@metriceng.com)

## Alicia Gonzalez

Community Outreach Specialist  
Media Relations Group, LLC  
14707 South Dixie Hwy, Suite 404  
Miami, Florida 33176  
(786) 280-6645

[agonzalez@mrgmiami.com](mailto:agonzalez@mrgmiami.com)



<https://www.fdotmiamidade.com/i195pdestudy.html>



# Interstate 195

PD&E Study

I-195/SR 112 From NW 12<sup>th</sup> Ave to Alton Road/SR 907

# Thank you!

