

IRON TRIANGLE PD&E STUDY

SR 953/NW 42nd Avenue - SR 948/NW 36th Street - SR 25/Okeechobee Road

Project Development and Environment (PD&E) Study

Miami Dade County, Florida

FPID NO.: 438521-1-22-01

ETDM NO.: 14472

PROJECT LOCATION MAP



PROJECT PURPOSE AND NEED

PROJECT PURPOSE

- Address operational deficiencies and improve capacity, relieve existing congestion and accommodate projected transportation demand within the Iron Triangle interchange area, specifically as it relates to SR 953/NW 42nd Avenue/LeJeune Road, SR 948/NW 36th Street, and SR 25/US 27/Okeechobee Road
- Improve safety conditions
- Enhance modal interrelationships

PROJECT NEED

- **Capacity/Transportation Demand:** Improve traffic operations/ capacity, alleviate existing congestion, and accommodate projected transportation demand
- **Safety:** Improve safety conditions
- **Modal Interrelationship:** Enhance multimodal activities



WHAT IS A PD&E STUDY?

A Project Development and Environment (PD&E) Study is a blending of engineering analysis, environmental analysis, and public involvement activities. The process is used by engineers and planners to determine the location and conceptual design of the preferred roadway improvements.



Engineering

Identify potential design solutions



Environmental

Evaluate potential impacts to the social, cultural, natural, and physical environments



Public Involvement

Seek Public Input



PROJECT BACKGROUND PLANNING FEASIBILITY STUDY

- 2015 FDOT's Listening Session – Stakeholders Request
- Planning Study 2020 – Iron Triangle Urban Interchange Planning Mobility Study Recommendations

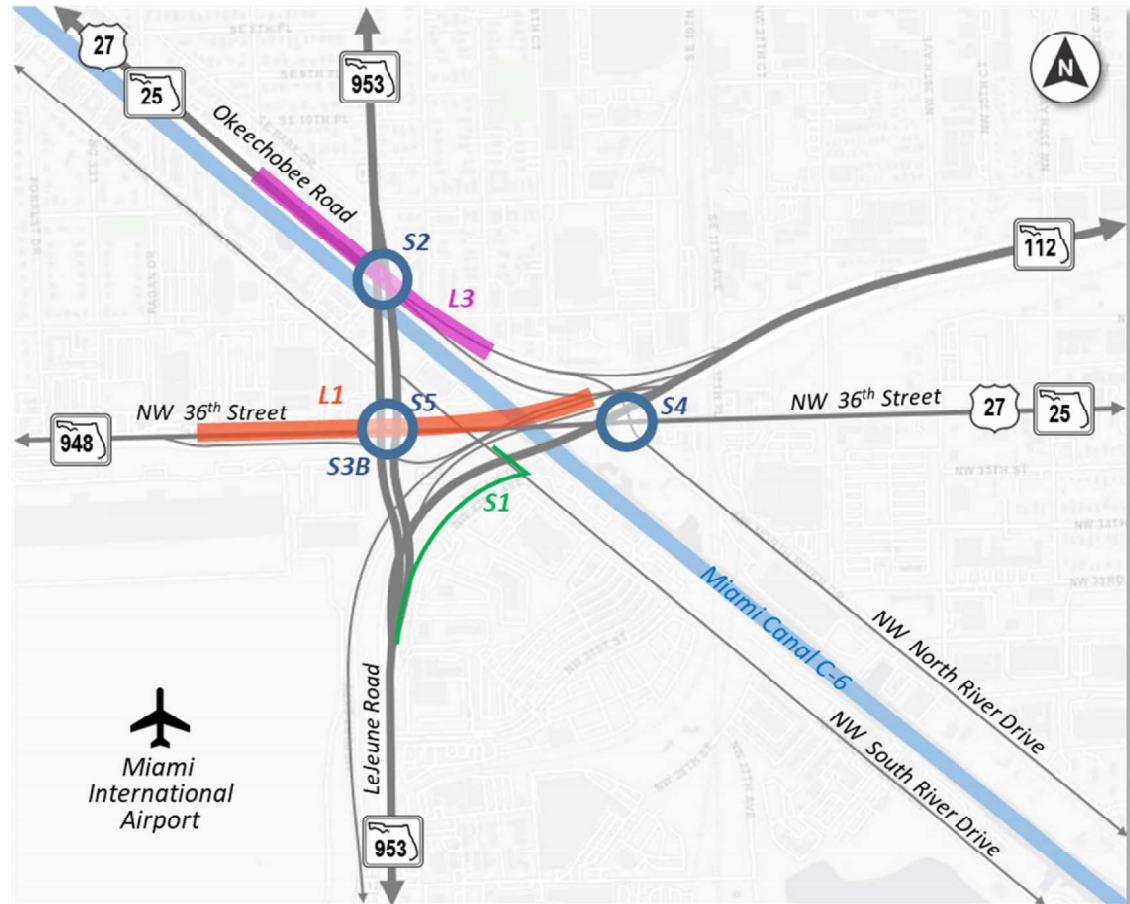
- **Long-Term Improvements:**

- Concept L1: Extension of WB SR 112 to WB NW 36th Street over LeJeune Road, touching down in the median west of LeJeune Road
- Concept L3: Okeechobee Road overpass at LeJeune Road

- **Short-Term Improvements:**

- Concept S1: Provide a 6-foot sidewalk along LeJeune Road spur roadway and NW South River Drive and improve pedestrian railroad crossing
- Concept S2: LeJeune Road and Okeechobee Road intersection improvements
- Concept S3B: LeJeune Road and NW 36th Street intersection improvements
- Concept S4: NW North River Drive and NW 36th Street intersection improvements
- Concept S5: Partial Displaced Left Turn (DLT) at the LeJeune Road and NW 36th Street intersection

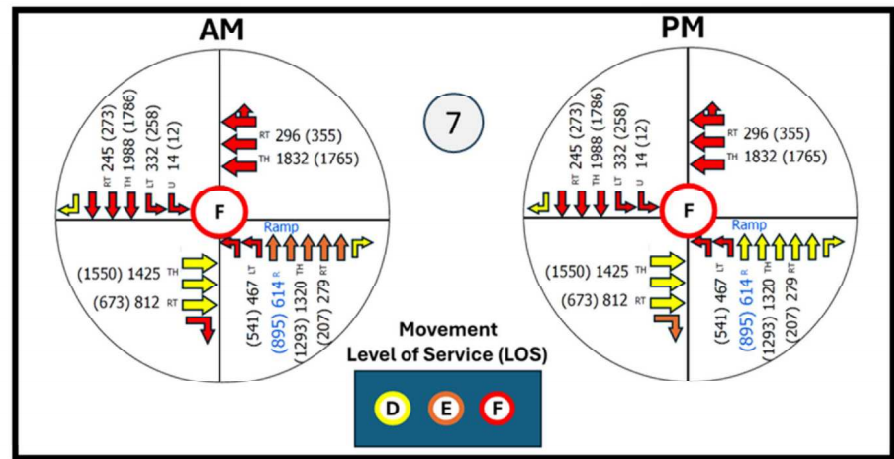
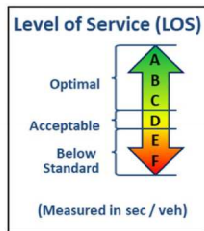
The PD&E Study will refine the planning concepts and develop additional improvements to help improve capacity, relieve congestion, and improve overall safety



EXISTING CONDITIONS ANALYSIS

Okeechobee Road at LeJeune Road Intersection

2023 Analysis	2050 No Build Analysis
AM: 60.2 (E)	AM: 113.4 (F)
PM: 56.8 (E)	PM: 93.3 (F)

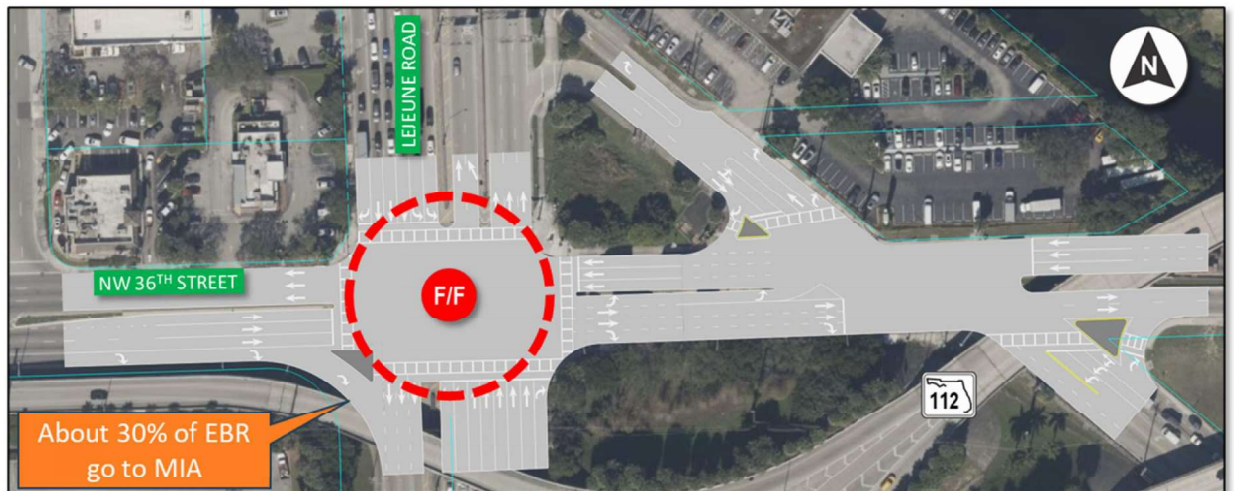


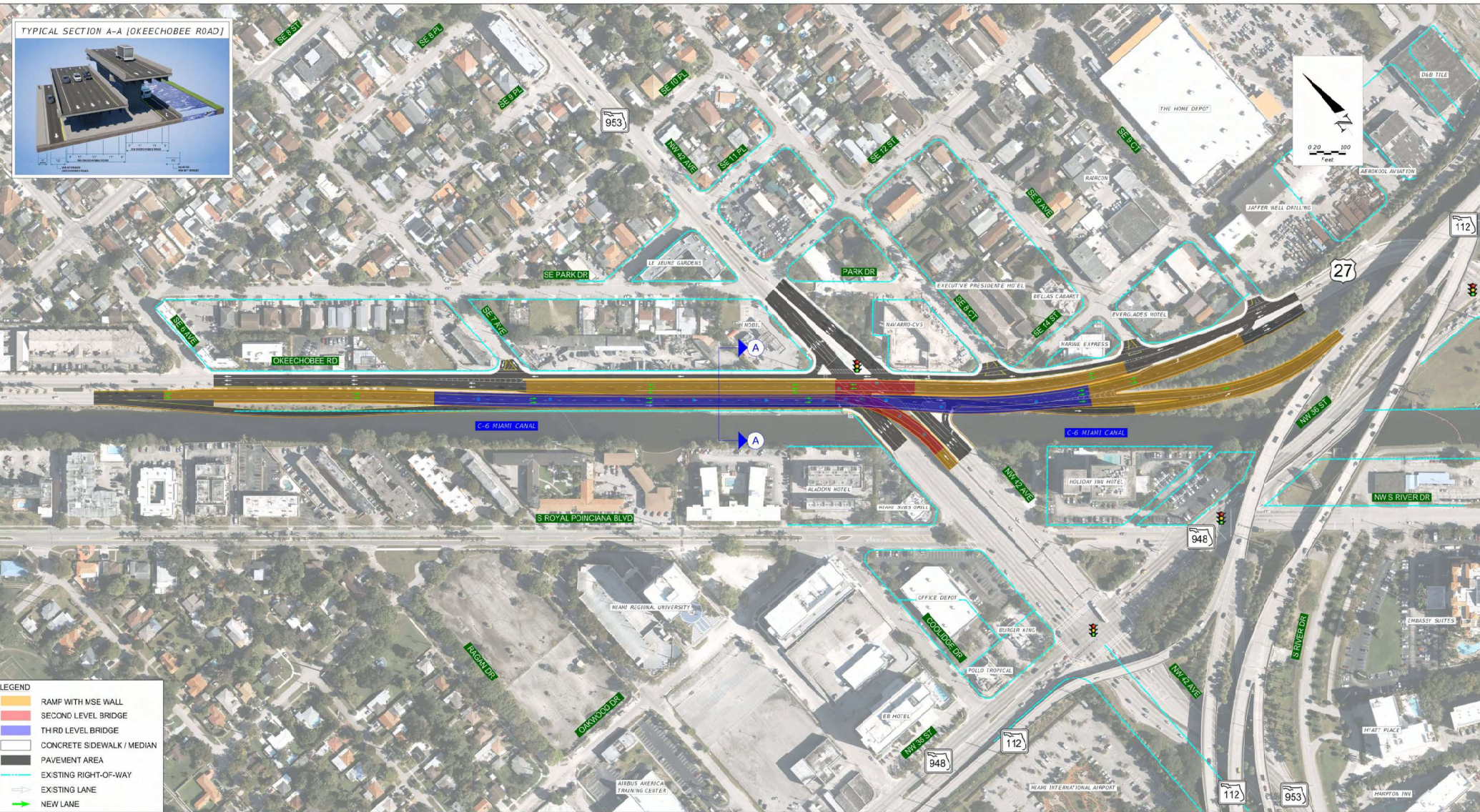
Predominant failing movements:

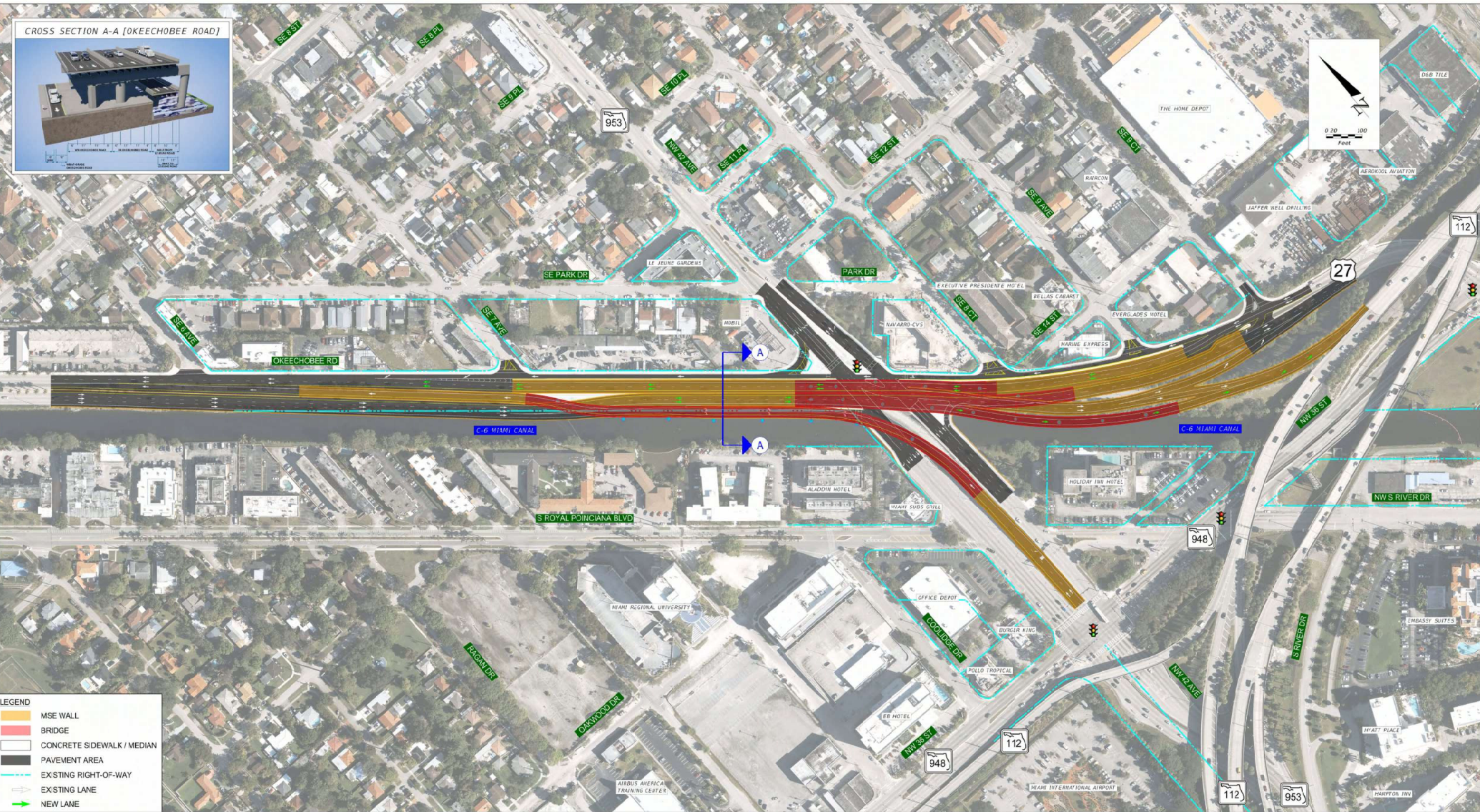
- Southbound Through
- Westbound Through

Modifications needed to improve operations:

- Reducing phases at the intersection
- Removing demand at the intersection
- Adding capacity



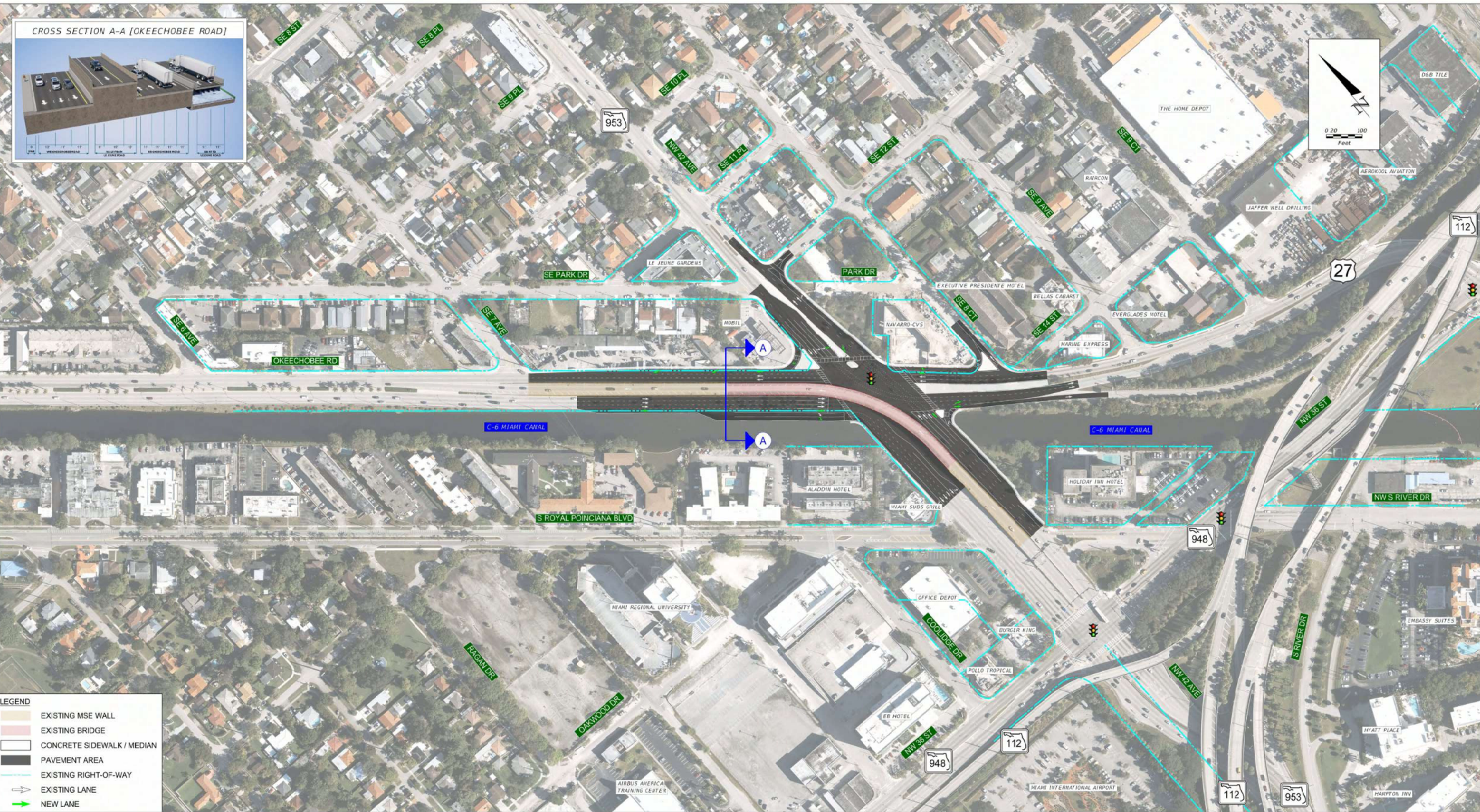




FDOT FLORIDA DEPARTMENT OF TRANSPORTATION
1000 NW 111TH AVE, MIAMI, FL 33172
MIAMI, FL 33172

IRON TRIANGLE PD&E STUDY
S.R. 953 / NW 42ND AVENUE,
S.R. 948 / NW 36TH STREET, AND
S.R. 25 / OKEECHOBEE ROAD
FPID No.: 438521-1-22-01, ETDM No.: 14472

PROPOSED IMPROVEMENTS - ALTERNATIVE A-2



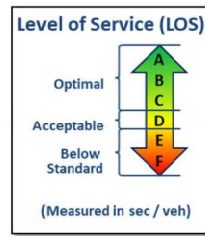
PROPOSED ALTERNATIVE A-2 Okeechobee Road at LeJeune Road Intersection



EXISTING CONDITIONS ANALYSIS

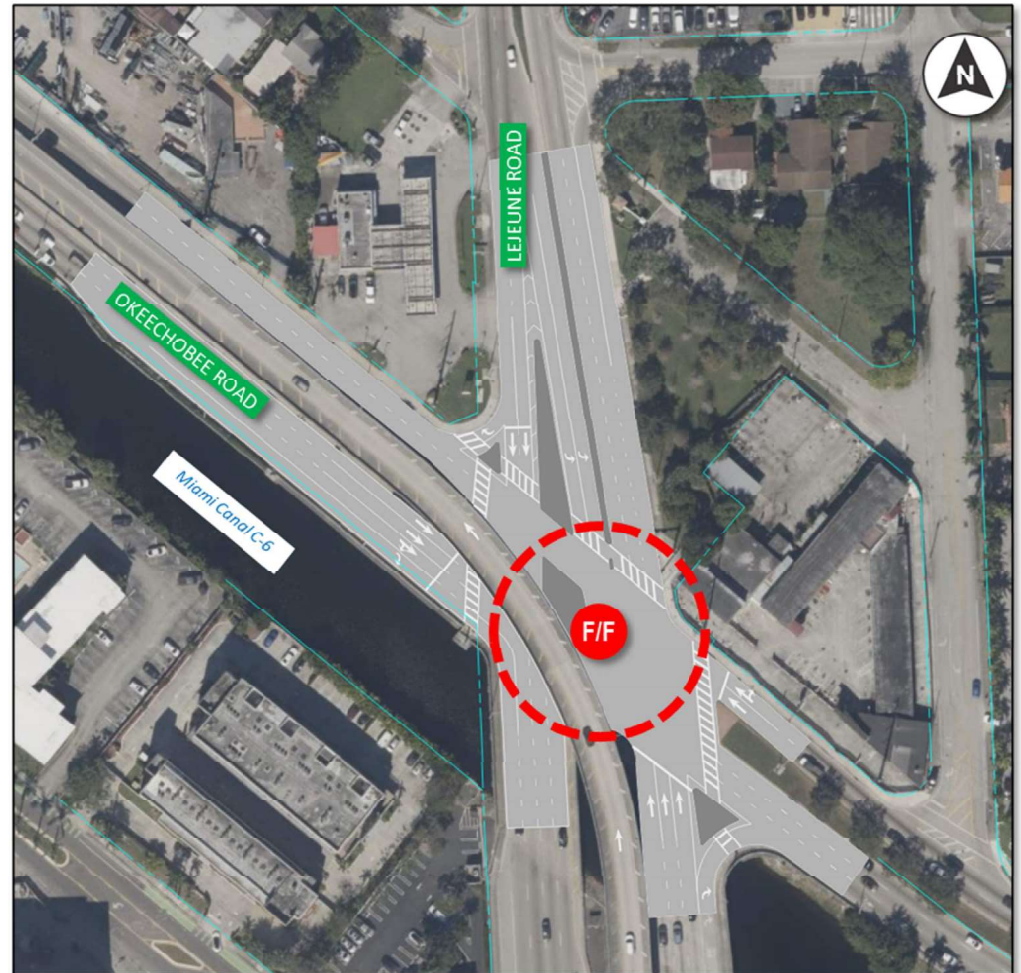
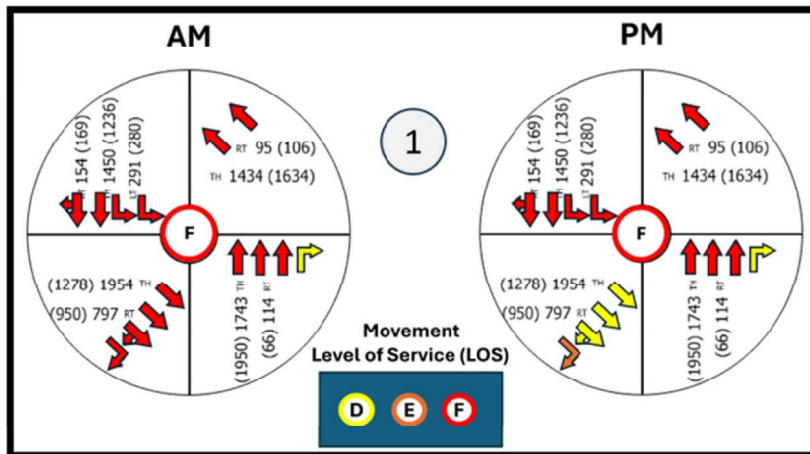
NW 36th Street at LeJeune Road Intersection

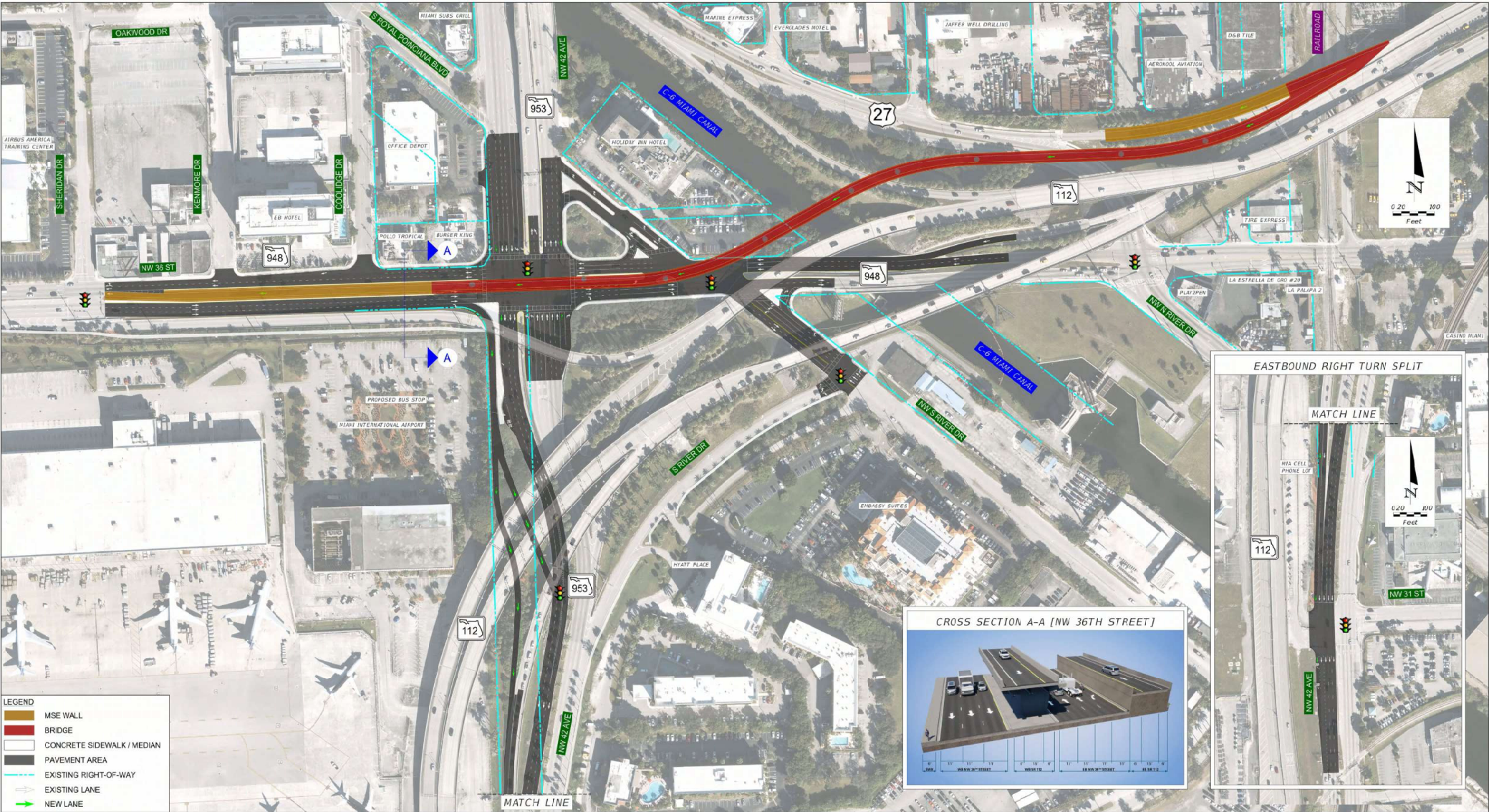
2023 Analysis	2050 No Build Analysis
AM: 52.0 (D)	AM: 117.5 (F)
PM: 58.0 (E)	PM: 113.1 (F)

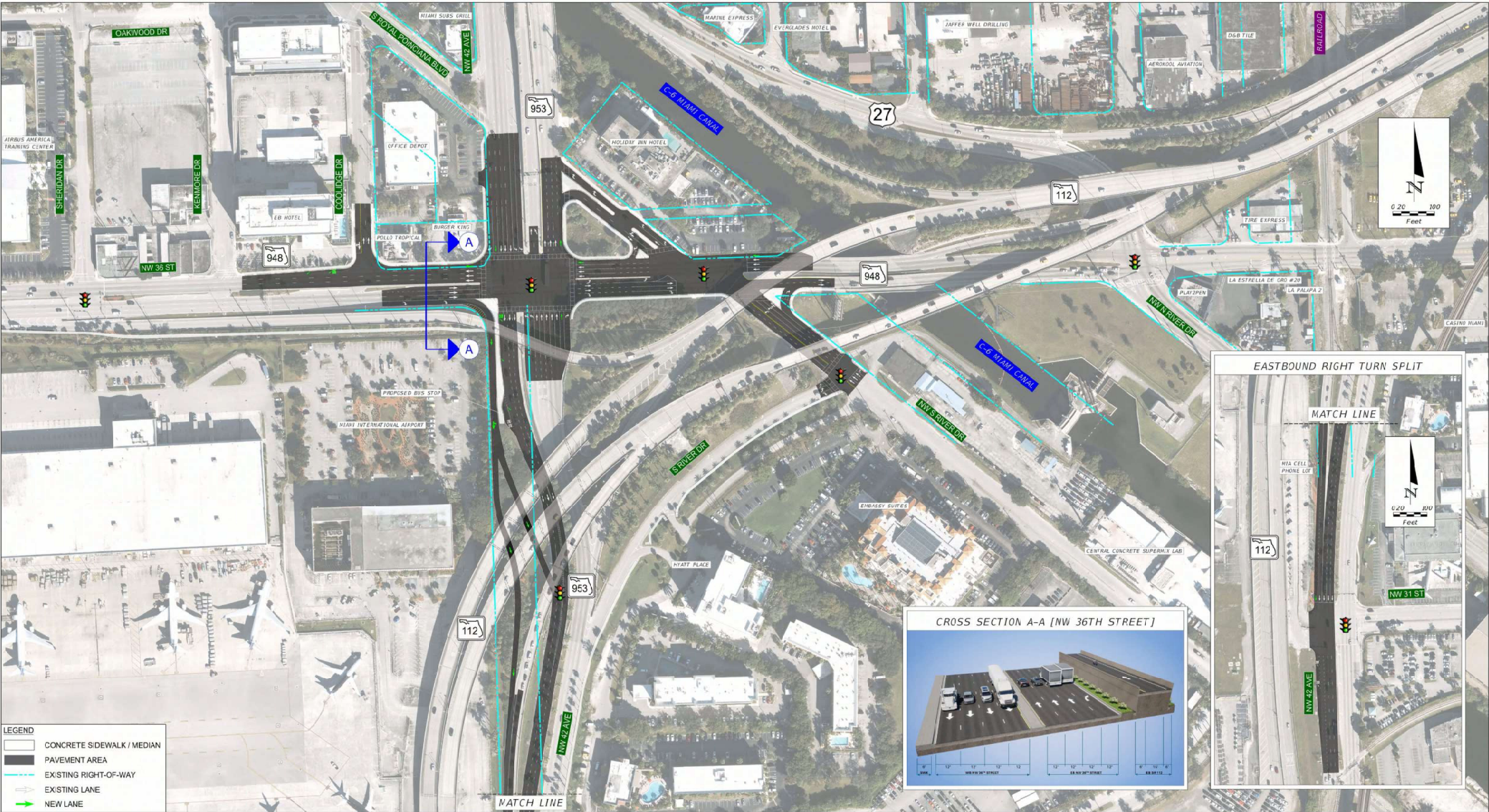


Modifications needed to improve operations:

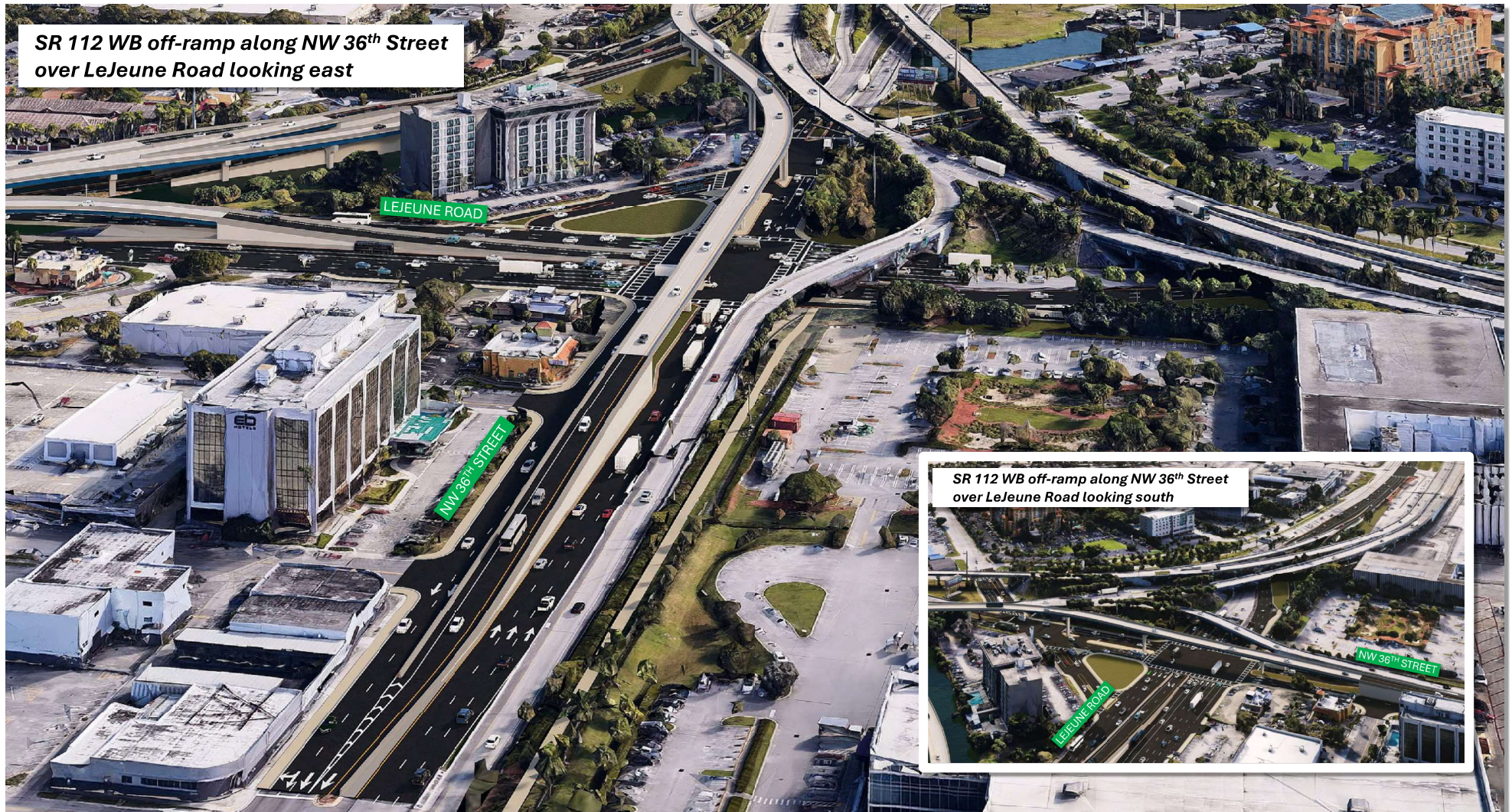
- Reducing phases at the intersection
- Removing demand at the intersection
- Adding capacity



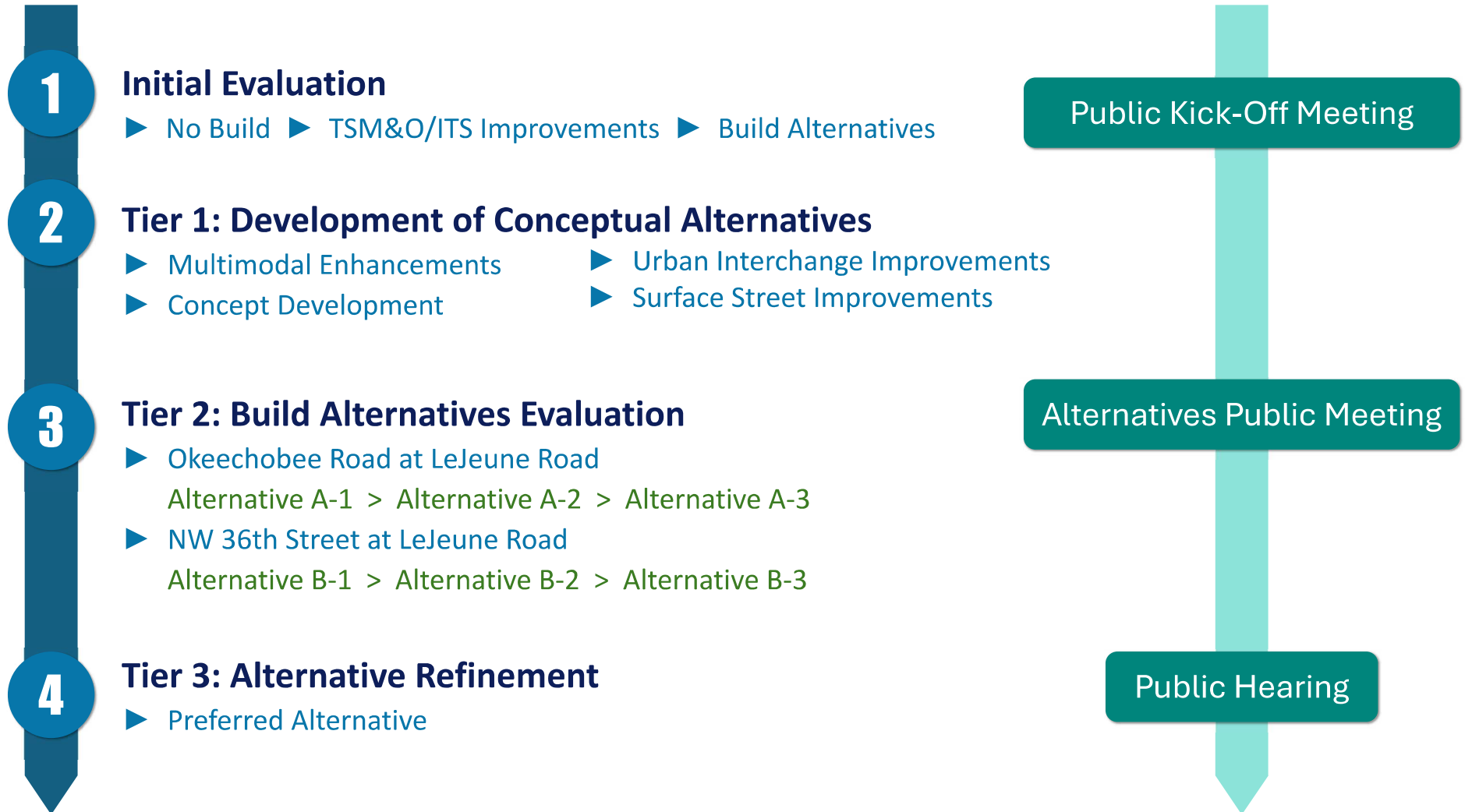




PROPOSED ALTERNATIVE B-1 NW 36th Street at LeJeune Road Intersection



ALTERNATIVES SELECTION PROCESS



ENVIRONMENTAL ANALYSIS

Social and Economic

- ▶ Current Land Use
 - Residential
 - Office/Retail
 - Public
 - Semipublic
- Recreational Section 4(f)
 - Three Friends Park
 - Miami River Greenway/SUN-Trail

Natural Resources

- ▶ Terrestrial Wetlands (Limited to drainage swales)
- ▶ C-6 Miami Canal/River
- ▶ Wildlife and Habitat
 - Florida Bonneted Bat
 - American Crocodile
 - Snail Kite



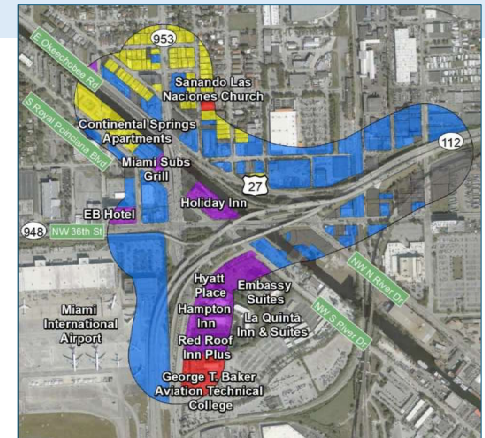
C-6 Miami Canal/River

Cultural Effects

- ▶ Urbanized and dense area – potential for historic resources (structures and bridges)
- ▶ No known archaeological resources
- ▶ Recorded resources:
 - Miami Canal (8DA6525)
 - CSX Railroad (8DA10753)

Physical Effects

- ▶ Contamination
 - Identified 63 contamination sites
- ▶ Traffic Noise
 - Noise Sensitive Sites:
 - Hotels with outdoor use areas/pools
 - Single and Multi-family Residencies
 - Institutional Facility



Noise Sensitive Areas

PROJECT SCHEDULE

TASK	2023				2024				2025				2026			
	Q1	Q2	Q3	Q4	Q1	Q2	Q3	Q4	Q1	Q2	Q3	Q4	Q1	Q2	Q3	Q4
PD&E Study – Begin			▶ START													
Existing Conditions Analysis																
Project Advisory Team (PAT) Meeting																
Miami-Dade County TPO Presentations																
Public Kick-Off Meeting																
Engineering & Environmental Analysis																
Development of Alternatives																
Alternatives Public Meeting																
Select Preferred Alternative																
Draft Engineering & Environmental Reports																
Public Hearing																
Final Engineering & Environmental Reports																
PD&E Study – End																

FUNDING:

- PD&E Study (Fiscal Year 2023)
- Preliminary Engineering (Fiscal Year 2028)
- Construction (Currently Unfunded)

