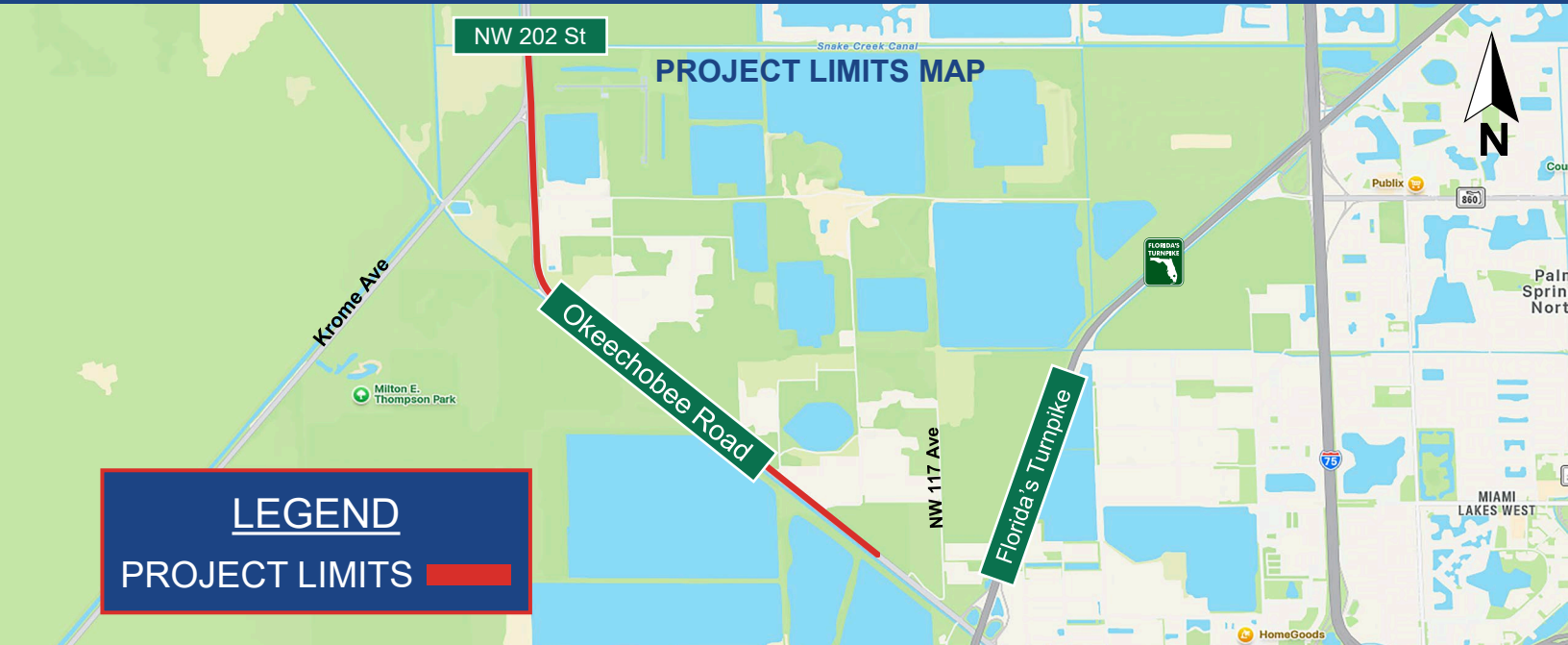


# Construction Project Fact Sheet

FLORIDA DEPARTMENT OF TRANSPORTATION - DISTRICT SIX

## State Road (S.R.) 25/U.S. 27/Okeechobee Road from Broward County Line to west of S.R. 821/Florida's Turnpike Landscape Project

PROJECT IDENTIFICATION NUMBER: 453443-1-52-01



**Map Description:** The project corridor runs along Okeechobee Road from the Broward County Line to west of Florida's Turnpike. Project limits are marked. North is oriented toward the top of the map.

### PROJECT WORK SCOPE

- Adding landscaping improvements along the project limits
- Increasing the visibility of medians, curves and roadside areas
- Installing native plant species

### LANE CLOSURE INFORMATION

Work will be done in phases to reduce the effects of construction on the community. Lanes can be closed during the following hours:

**WEEKNIGHTS AND WEEKENDS** 9 p.m. to 7 a.m.

Access to businesses and residences will be maintained at all times. Pedestrian and vehicular detours will be established with clear signage. Weekly lane closure updates are posted at [SouthFLRoads.com](https://SouthFLRoads.com).

### SCHEDULE AND COST

**START**  
May 2026

**ESTIMATED COMPLETION**  
Early 2029

**PROJECT COST**  
\$1.48 Million

### CONTACT INFORMATION

**COMMUNITY OUTREACH SPECIALIST**  
Cristina Rodriguez

**PHONE**  
(786) 562-1868

**E-MAIL**  
[Cristina.Rodriguez@dot.state.fl.us](mailto:Cristina.Rodriguez@dot.state.fl.us)

### FOR MORE INFORMATION



Scan the QR Code for project updates

FOLLOW US



MyFDOT\_Miami



MyFDOTMiami

Visit us at: [SouthFLRoads.com](https://SouthFLRoads.com)

