



NW 67 AVENUE FROM STATE ROAD (SR) 948/NW 36 STREET TO NW 22 STREET

# NW 67 AVENUE IMPROVEMENTS

## Freight Intermodal Connector Analysis

FM NO. 436426-1-12-01

Public Meeting #1

July 19, 2023





Si usted necesita traducción durante esta reunión, por favor comuníquese con nosotros. Usted puede levantar la mano o pedir ayuda a través del chat y un miembro de nuestro equipo lo asistirá.

---



# Elected Officials

We would like to recognize any federal, state, county, or city officials who may be present.

Please select the “Raise Hand” feature on the control panel.

---



The Florida Department of Transportation complies with various non-discrimination laws and regulations, including:

**Title VI of the Civil Rights Act of 1964**

*Public Participation is being held without regard to race, color, national origin, age, sex, religion, disability, or family status.*

---

**For questions or concerns, you may contact either:**

**District Six**

Florida Department of Transportation

*Title VI Coordinator (interim)*

**Tish Burgher**

1000 NW 111 Avenue

Miami, Florida 33172

(305) 470-5277

[Tish.Burgher@dot.state.fl.us](mailto:Tish.Burgher@dot.state.fl.us)

**Tallahassee Office**

Florida Department of Transportation

*State Title VI Coordinator*

**Stefan Kulakowski**

605 Suwannee Street, MS 65

Tallahassee, Florida 32399

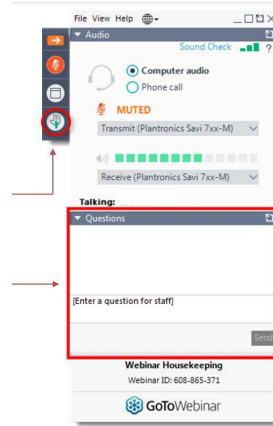
(850) 414-4742

[stefan.kulakowski@dot.state.fl.us](mailto:stefan.kulakowski@dot.state.fl.us)



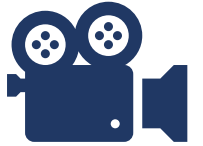


*This recording and transcript will be available after the meeting.*



*Use the "React" button to raise your hand and ask a question.*

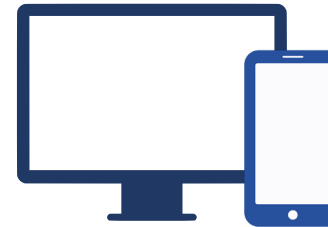
***This meeting is being recorded.***



*Please keep your microphone muted and your camera off.*



*Use the "Chat" feature to ask the presenters a question.*



*Features may look different on a desktop and mobile device.*

---

***Technical Issues? Contact [Maria@iscprgroup.com](mailto:Maria@iscprgroup.com)***



NW 67 AVENUE FROM SR 948/NW 36 STREET TO NW 22 STREET

# NW 67 AVENUE IMPROVEMENTS

FM NO. 436426-1-12-01

## Meet Your Team



**FDOT PROJECT MANAGER**  
Daniel Lameck  
District 6

[Daniel.Lameck@dot.state.fl.us](mailto:Daniel.Lameck@dot.state.fl.us)  
(305) 470-5238



**CONSULTANT PROJECT MANAGER**  
Jesús Fuentes, P.E.  
EXP U.S. Services, Inc.

[jesus.fuentes@exp.com](mailto:jesus.fuentes@exp.com)  
(954) 495-6341



**COMMUNITY OUTREACH SPECIALIST**  
Amy Elmore, AICP  
EXP U.S. Services, Inc.

[amy.elmore@exp.com](mailto:amy.elmore@exp.com)  
(813) 469-2437

## Meeting Agenda

- Welcome and Introductions
- Project Overview
  - Performance Measures
  - Existing Conditions
  - Public Involvement
- Q & A
- Wrap Up

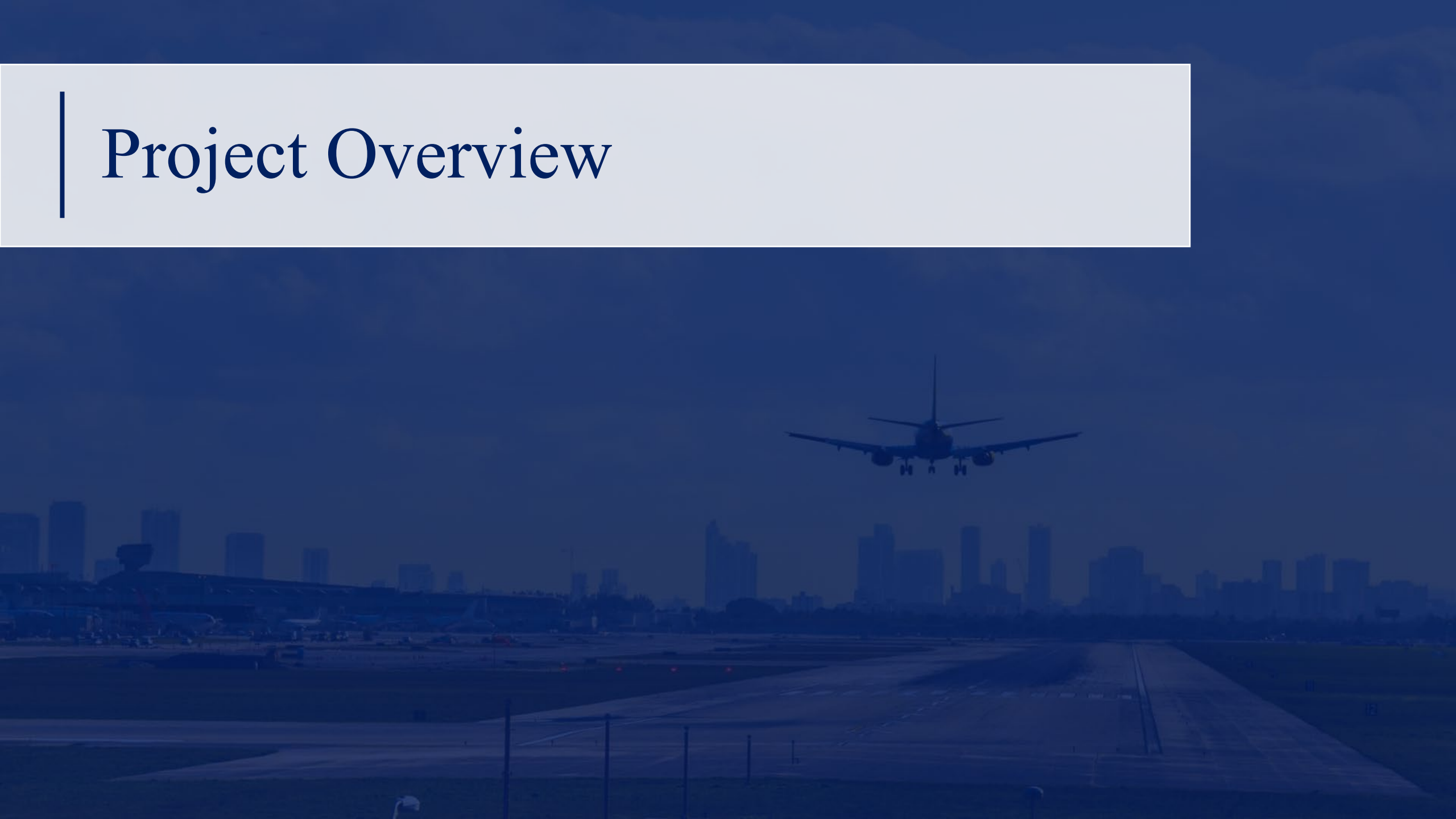
Visit the Project Website:

[www.southflroads.com/nw67avenue](http://www.southflroads.com/nw67avenue)



@MyFDOTMiami

# Project Overview





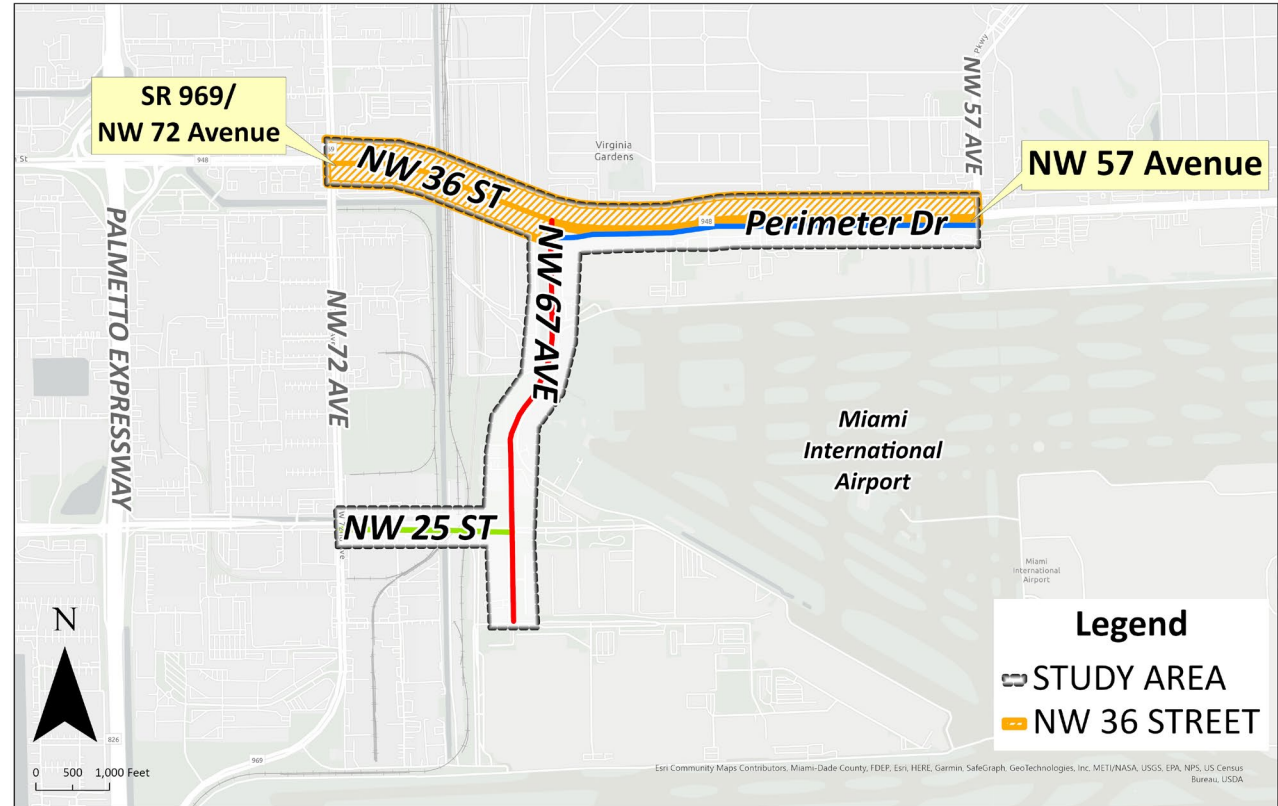




# Study Area Roadways



## NW 67 Avenue



## NW 36 Street





# Study Area Roadways



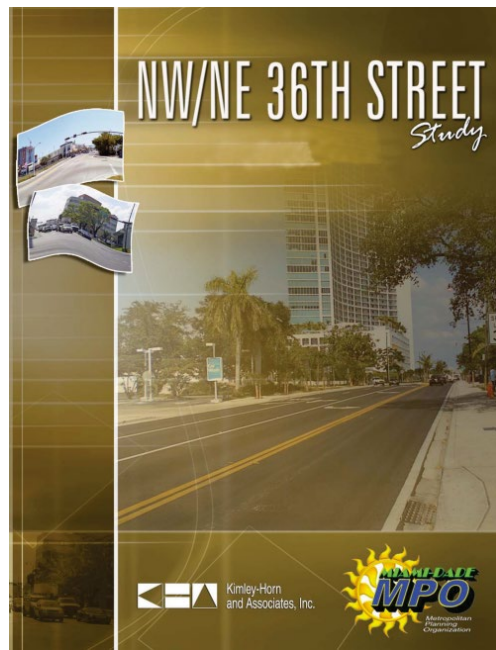
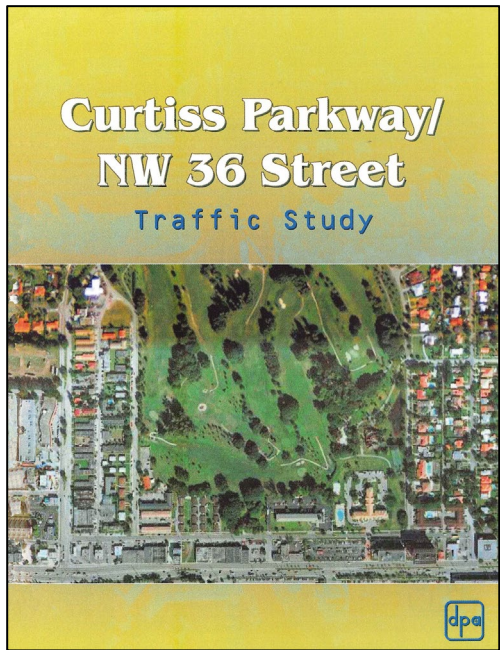
## Perimeter Drive



## NW 25 Street



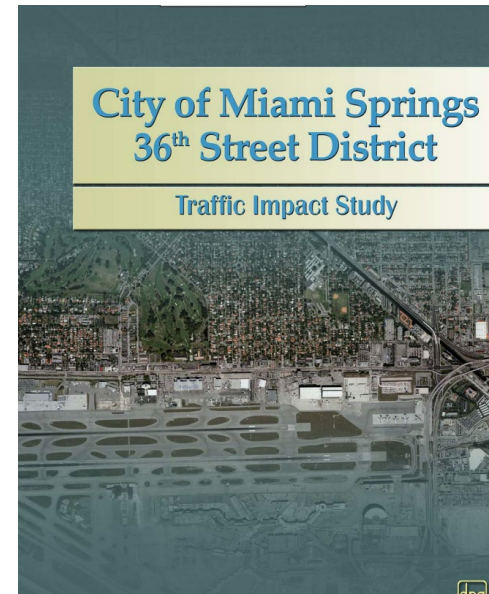
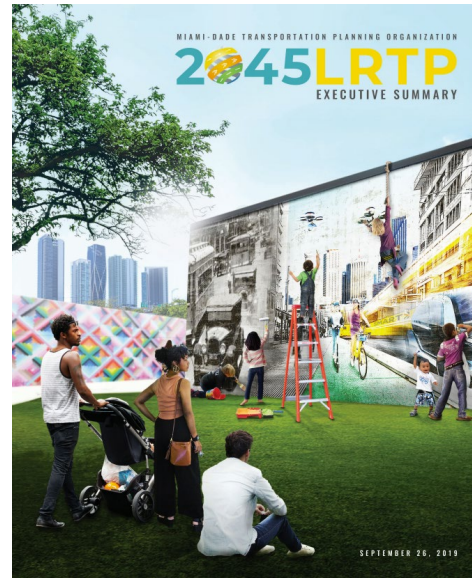
# Previous Study Efforts in or near the Study Area





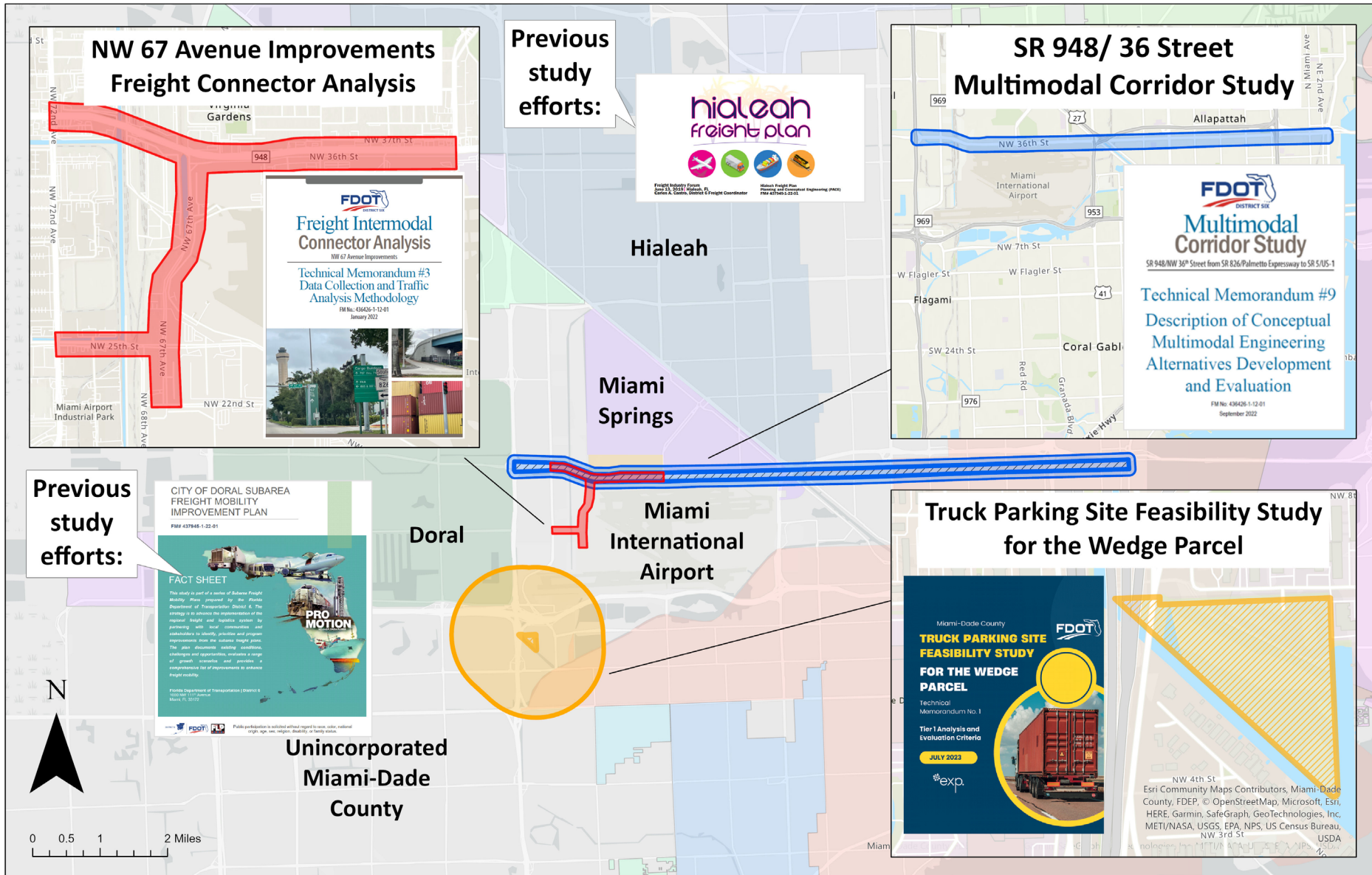


# Previous Study Efforts in or near the Study Area





# Freight Study Efforts in the Area







# Purpose and Need



Regular and Significant Congestion



Transit Access only on SR 948/NW 36 Street and SR 969/NW 72 Avenue



2 Million+ Tons of Cargo in 2021 at MIA



3 Historic Resources



Multiple locations with frequent crashes







# Performance Measures



# NW 67 Avenue Study Corridor Goals



Increase  
Safety and  
Security



Improve Efficient  
and Reliable  
Mobility



Support  
Economic  
Vitality and  
Competitiveness



Improve  
Multimodal  
Access for All



Preserve and  
Protect the  
Environment



Enhance  
Integration and  
Connectivity



# Alternative Analysis Process



Public Involvement and Stakeholder Coordination







# Selection of Alternatives



## No-Build Alternative

Maintain existing conditions with no additional future improvements



## Transportation Systems Management & Operations (TSM&O) Alternatives

Evaluating transportation systems management and operations



## Build Alternatives

Providing space for other purposes



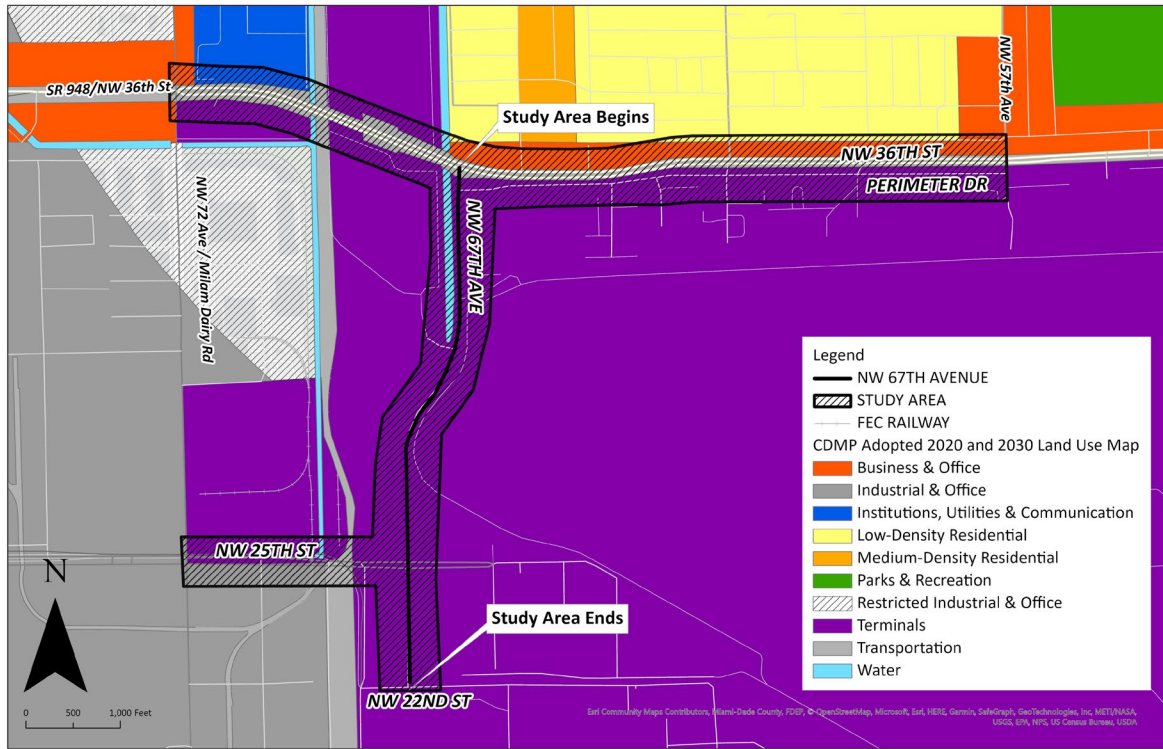
# | Existing Conditions



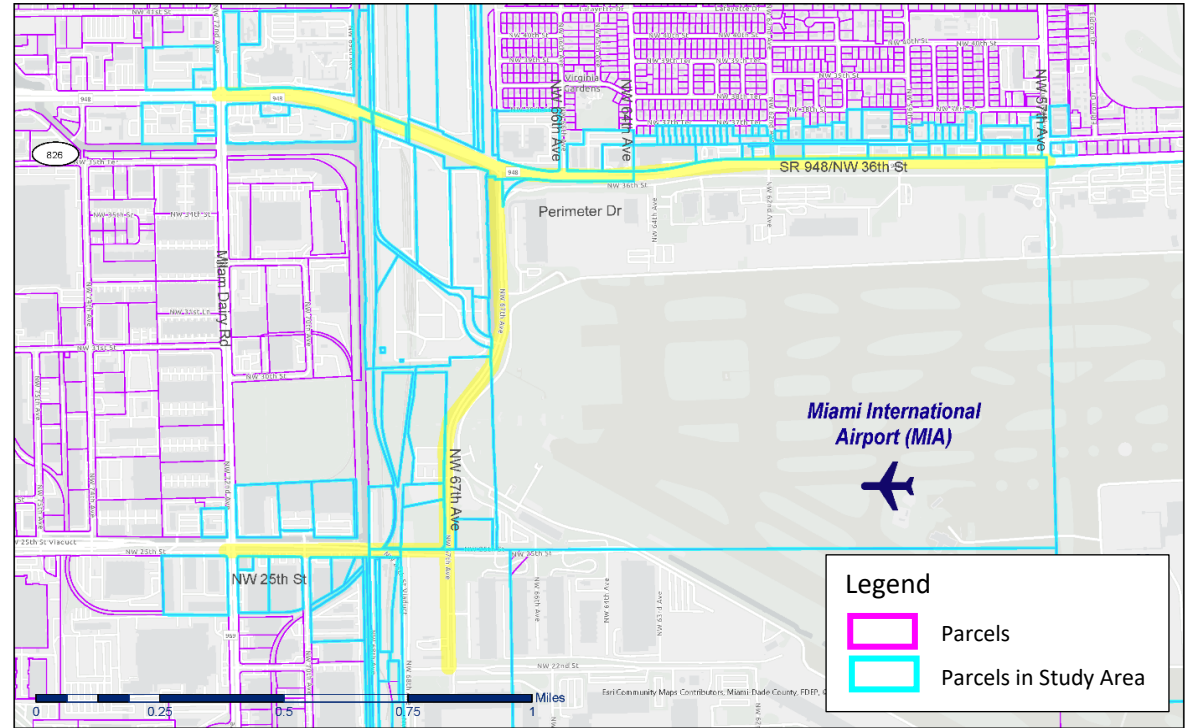
# FDOT | Study Area







**Study Area Future Land Use**



**Parcels in the Study Area**

## Land Use Designations

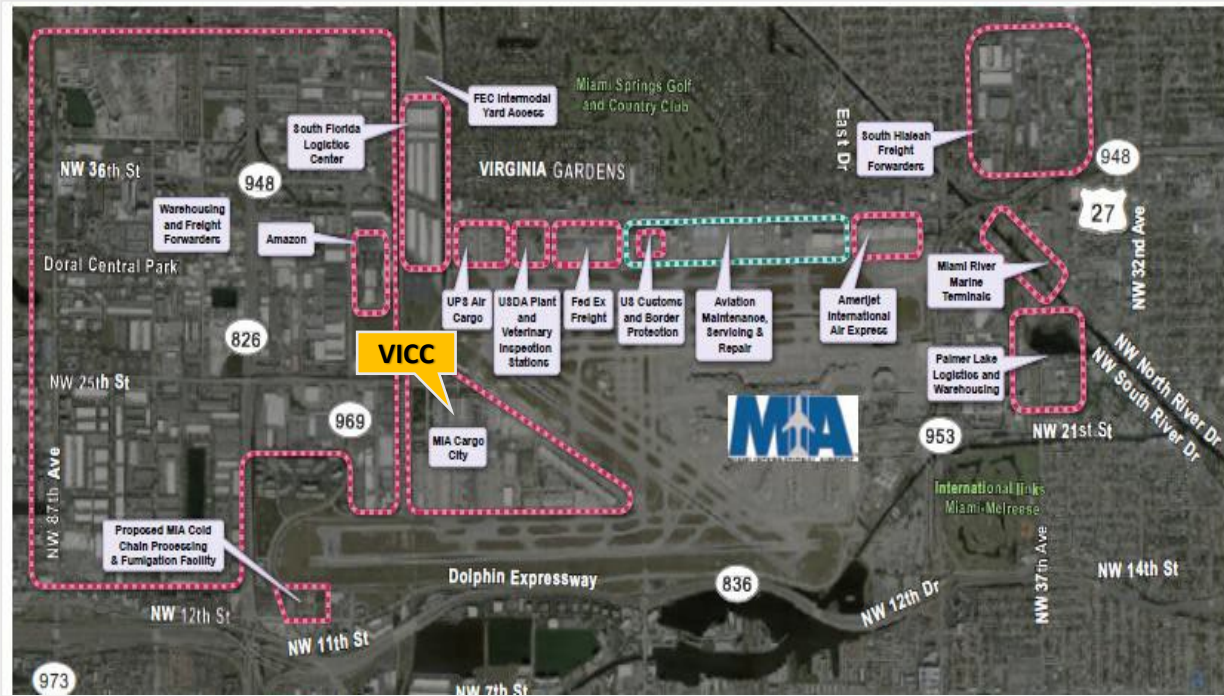
Business and Office  
Industrial and Office  
Transportation

Terminals  
Low-Density and Medium-Density Residential  
Restricted Industrial and Office

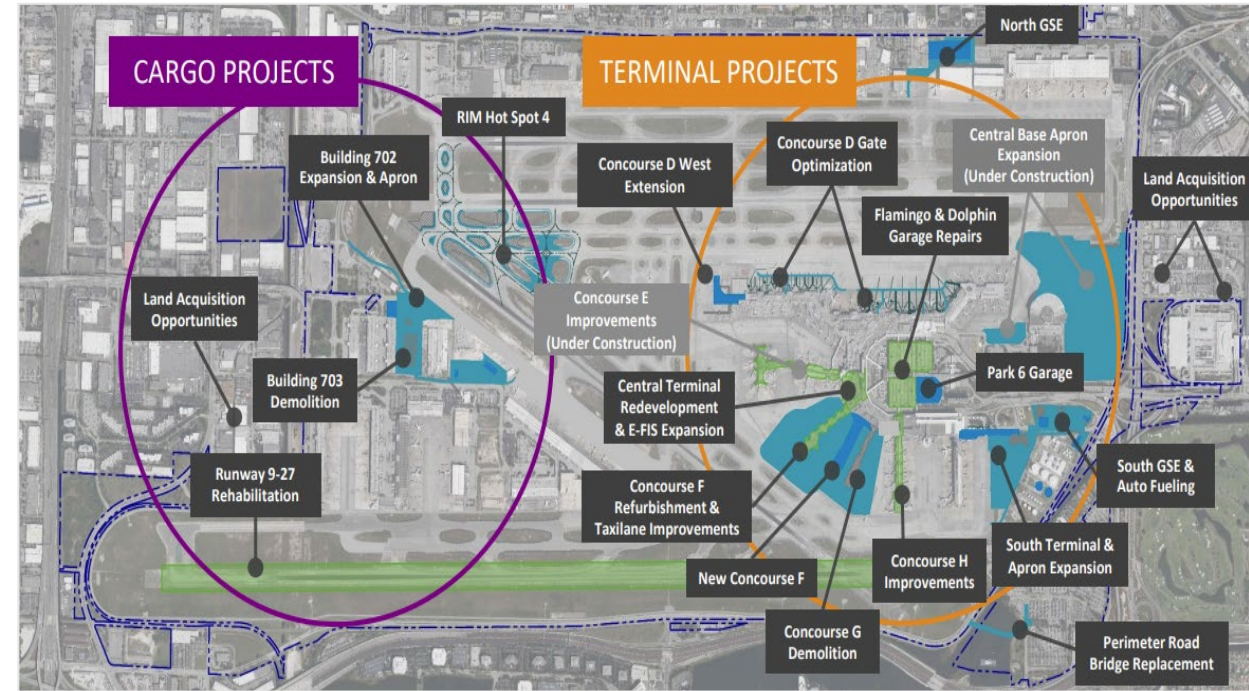




# Freight Facilities Near Study Area



Facilities in the vicinity of the Study Area



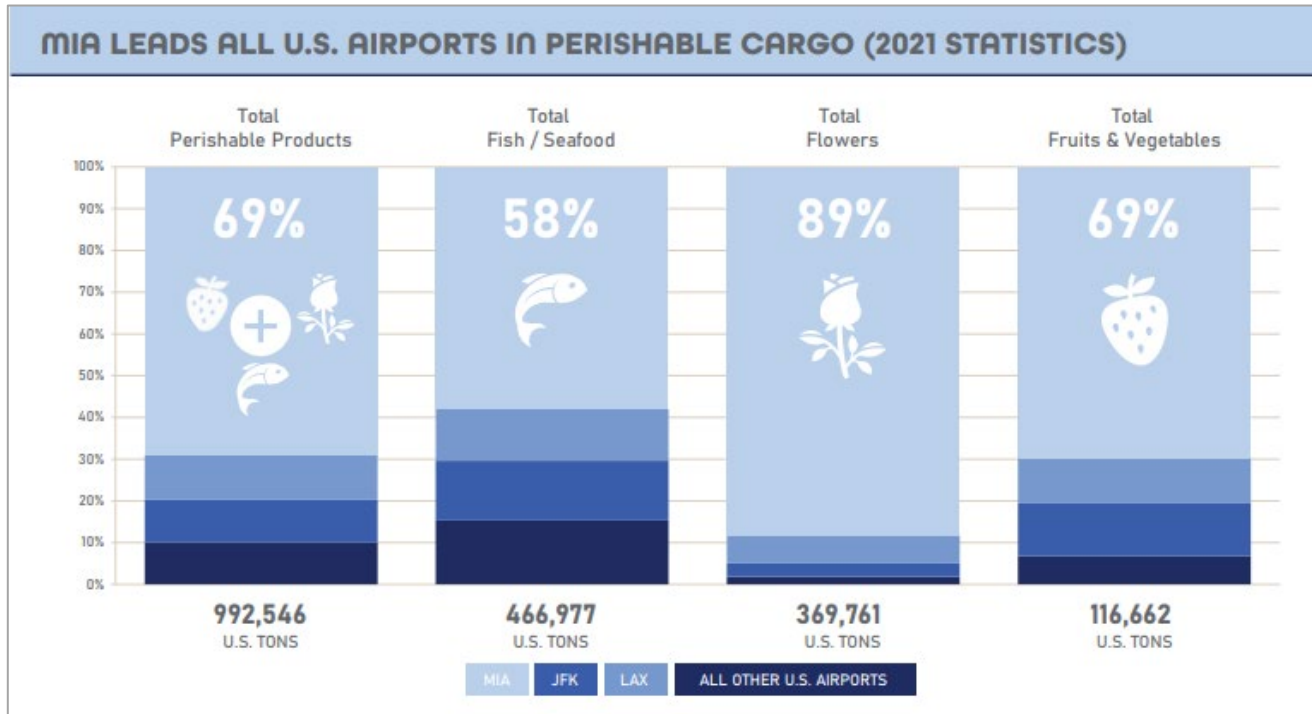
MIA Capital Improvement Program

## Freight Facilities

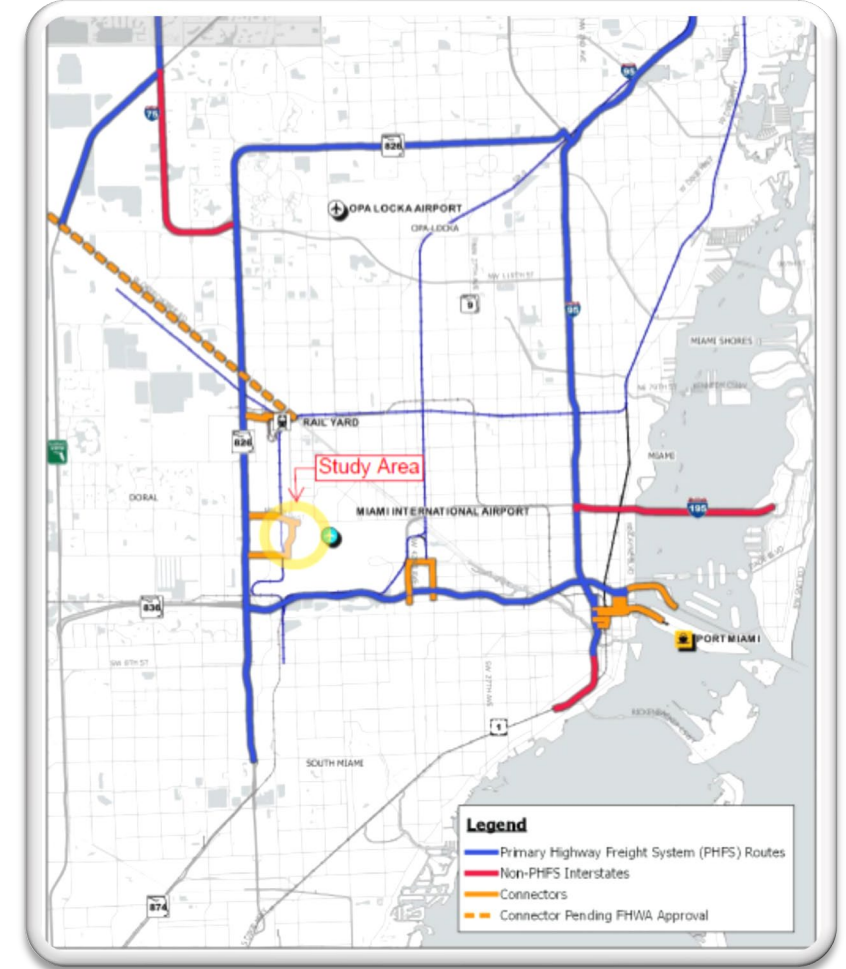
MIA | UPS | FedEx | DHL Express |  
Many processing/distribution warehouses







MIA's Perishable Cargo Statistics\*



National Highway Freight Network in Miami-Dade County

\*Source: MIA Cargo Brochure (2021)





# Freight Traffic

## Truck Traffic (2021)\*

SR 948/NW 36 Street



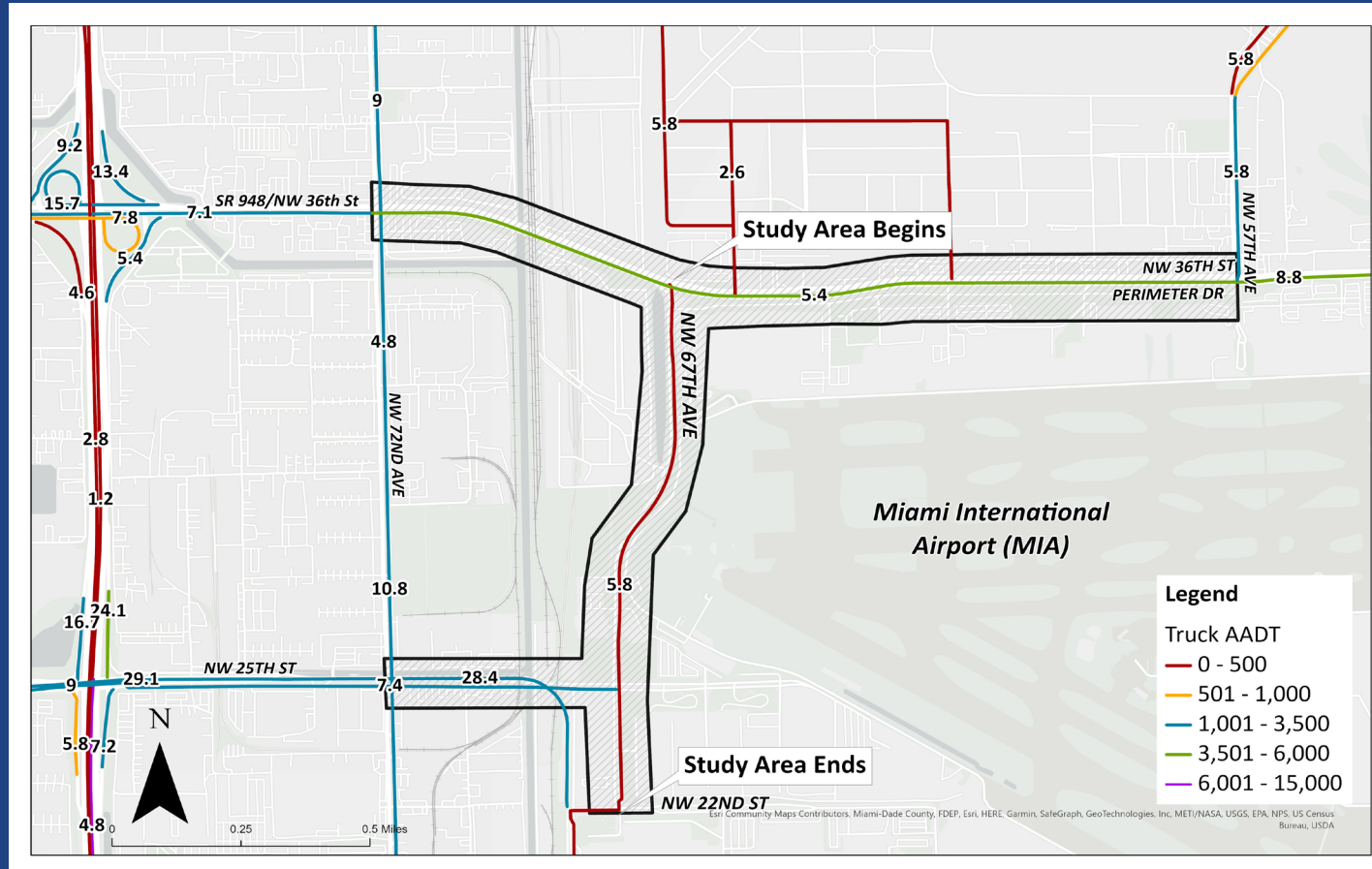
NW 25 Street



NW 25 Street Viaduct



NW 67 Avenue

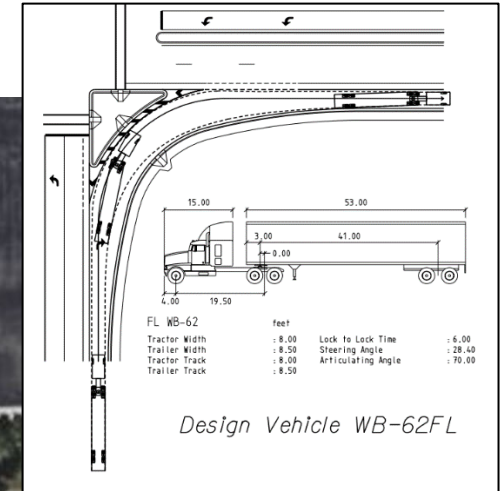
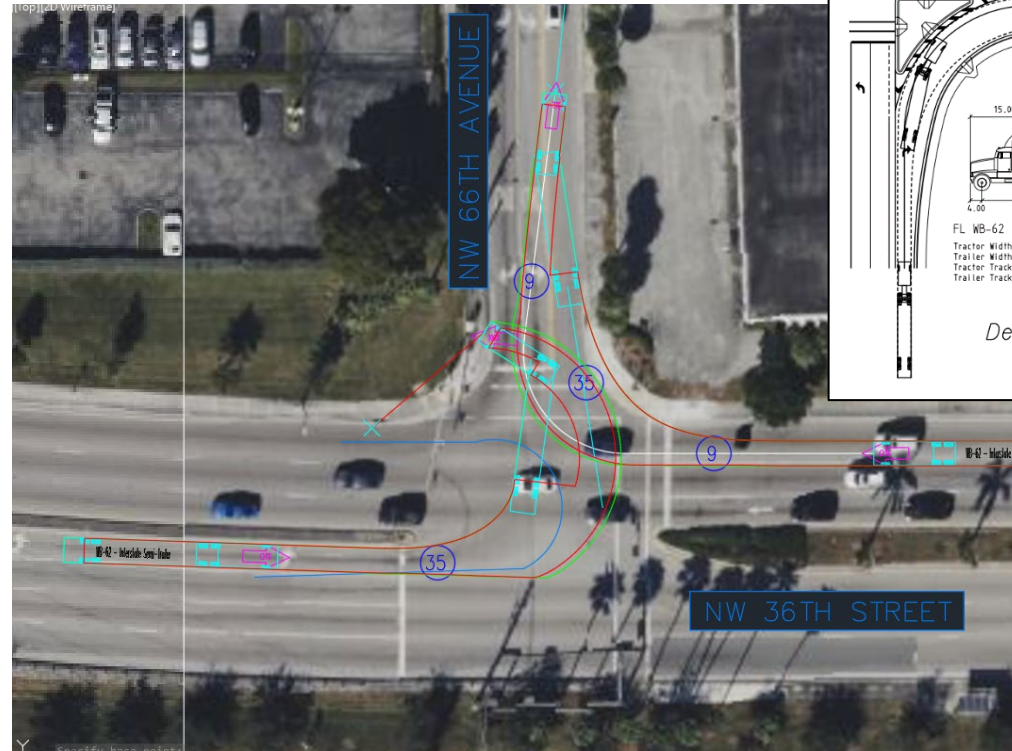
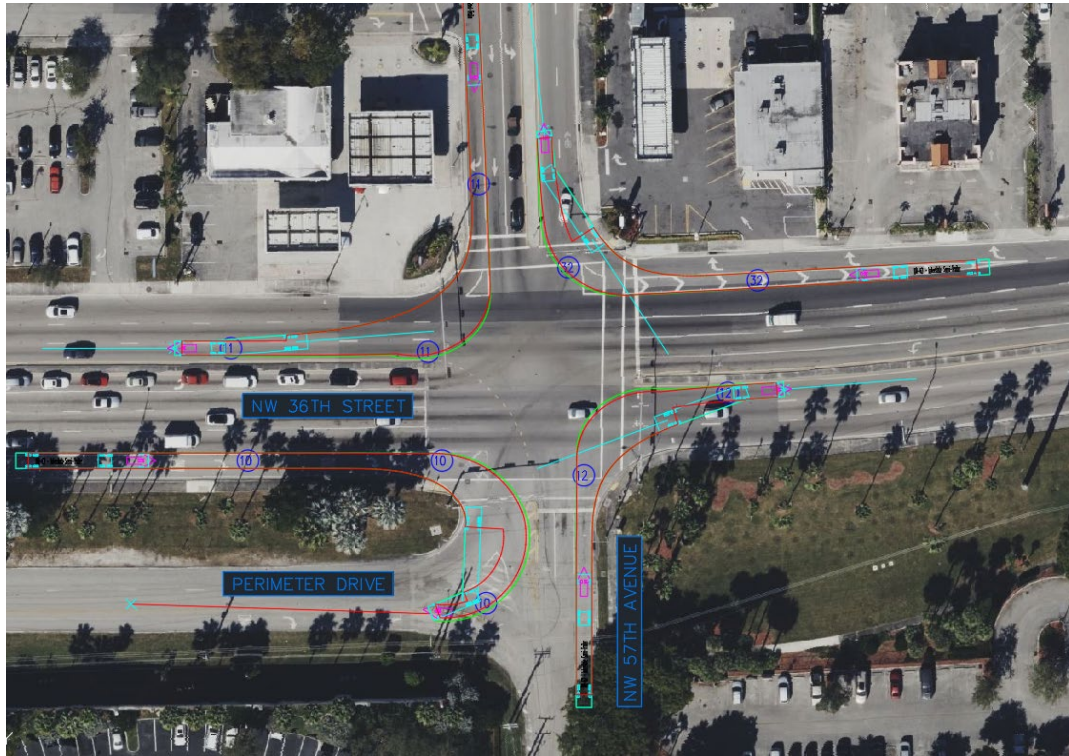


\*Source: FDOT Transportation Data & Analytics Office (TDA)





# Turning Radii Analysis For Freight Traffic



## Overview

- Issues at the several signalized intersections
- Issues at several directional openings between NW 67 Avenue and NW 57 Avenue
- Access constrains to Perimeter Drive from SR 948/NW 36 Street and vice versa at NW 62 Avenue and NW 59 Avenue







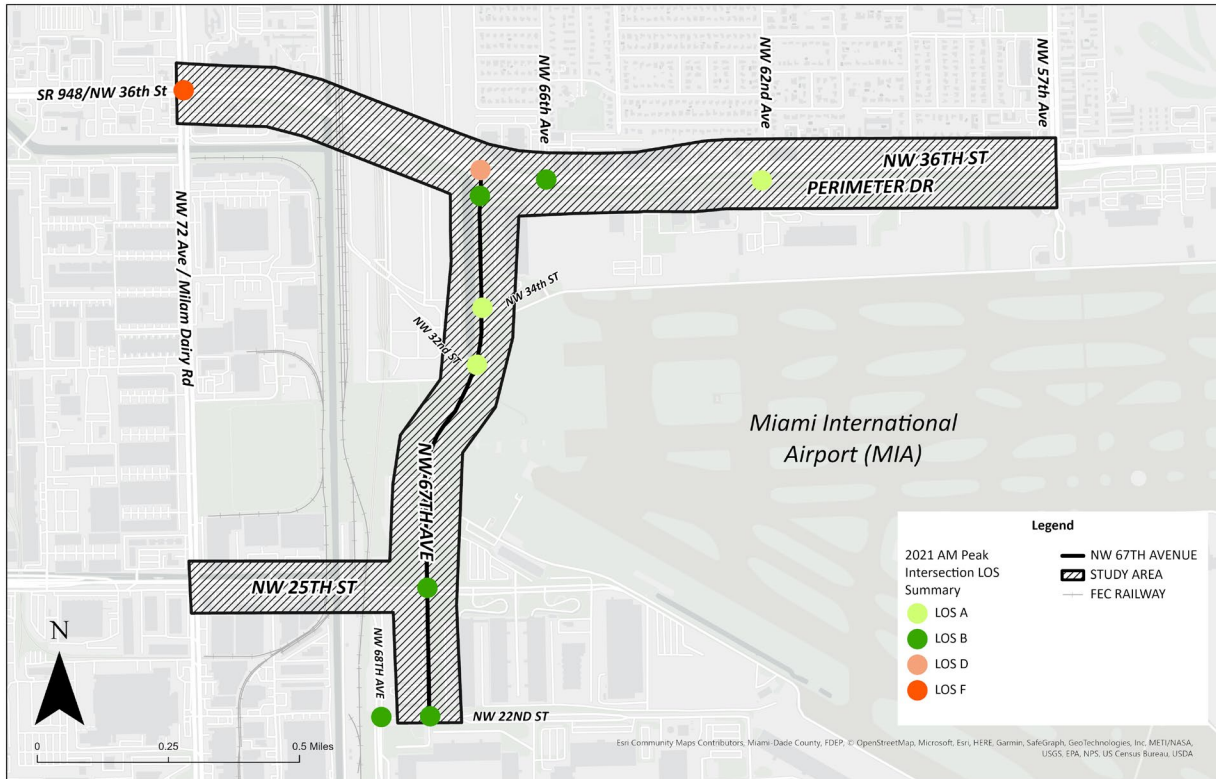
# Other Considerations For Freight Traffic



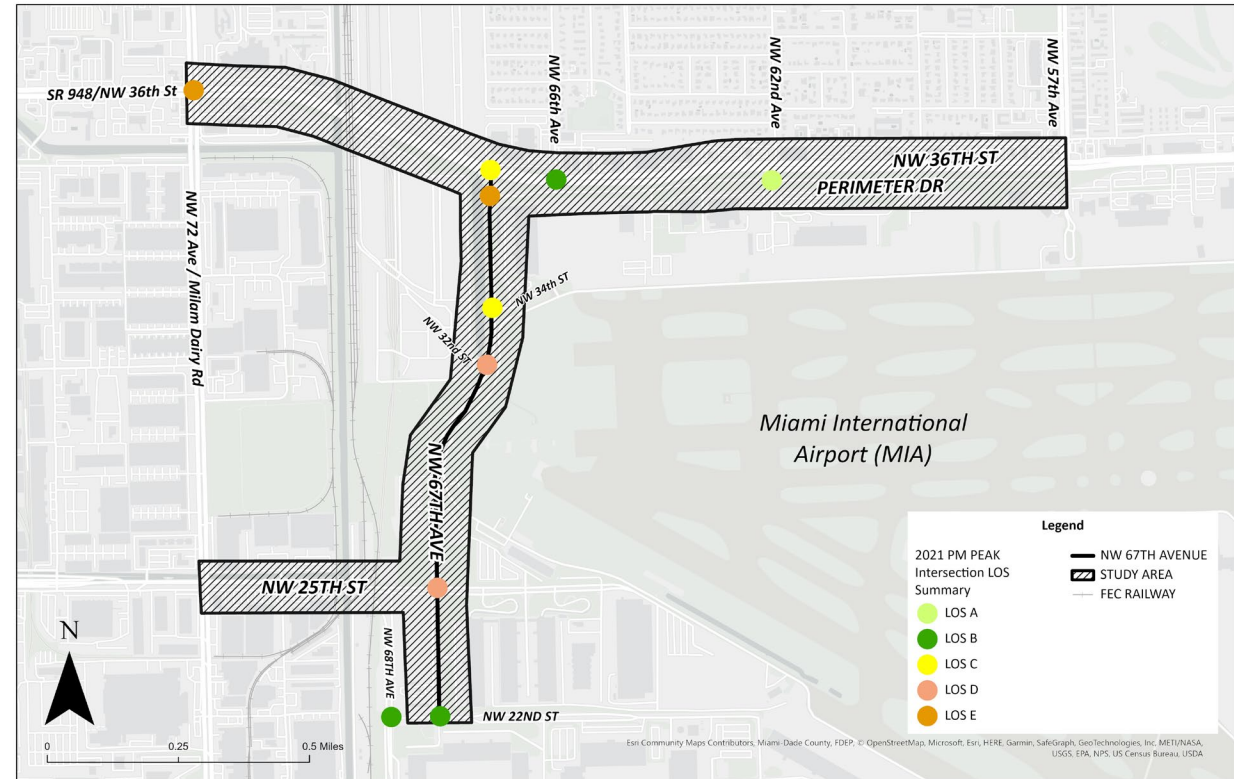


# Traffic Conditions

## AM Peak Hour Level of Service (2021)



## PM Peak Hour Level of Service (2021)



# Overview

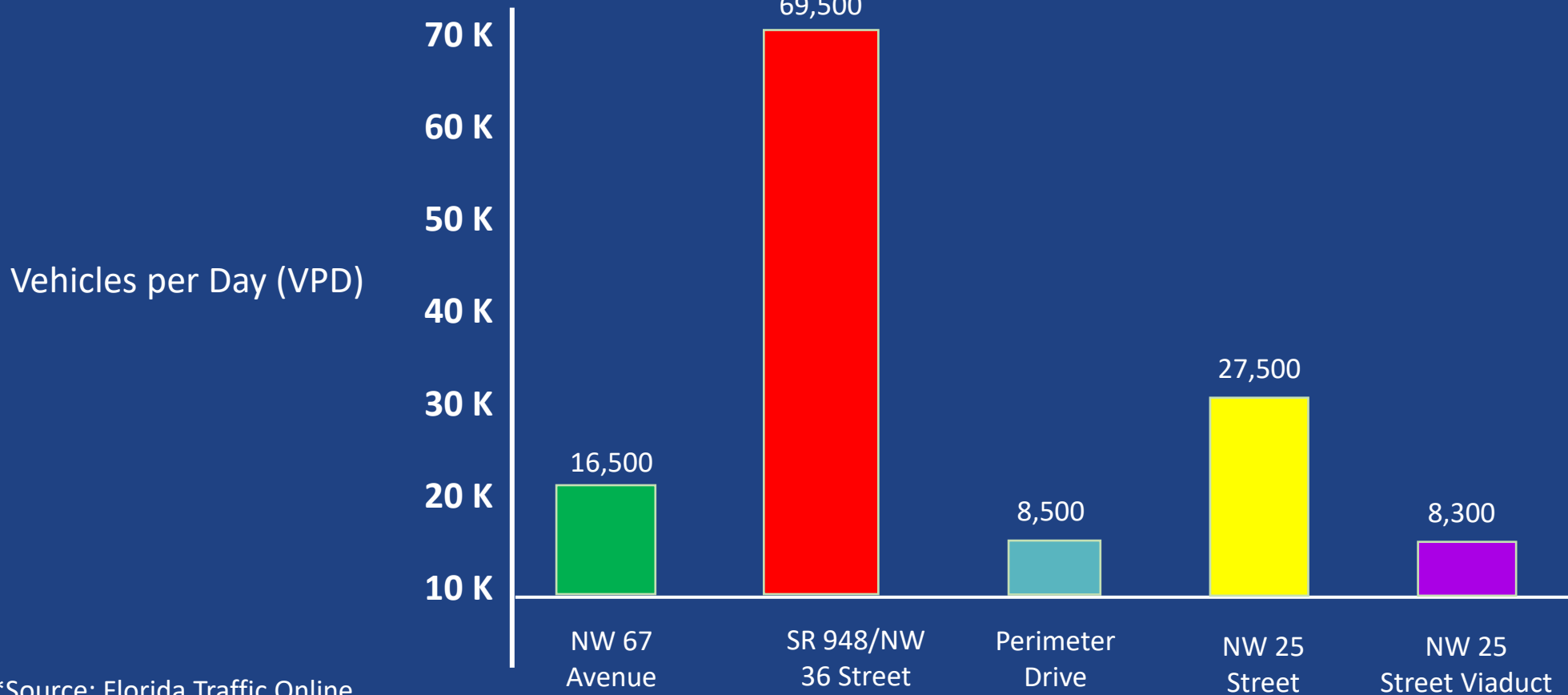
Most congested: SR 969/NW 72 Avenue & SR 948/NW 36 Street  
 Mid-Congestion: SR 948/NW 36 Street & NW 67 Avenue  
 NW 67 Avenue & Perimeter Drive





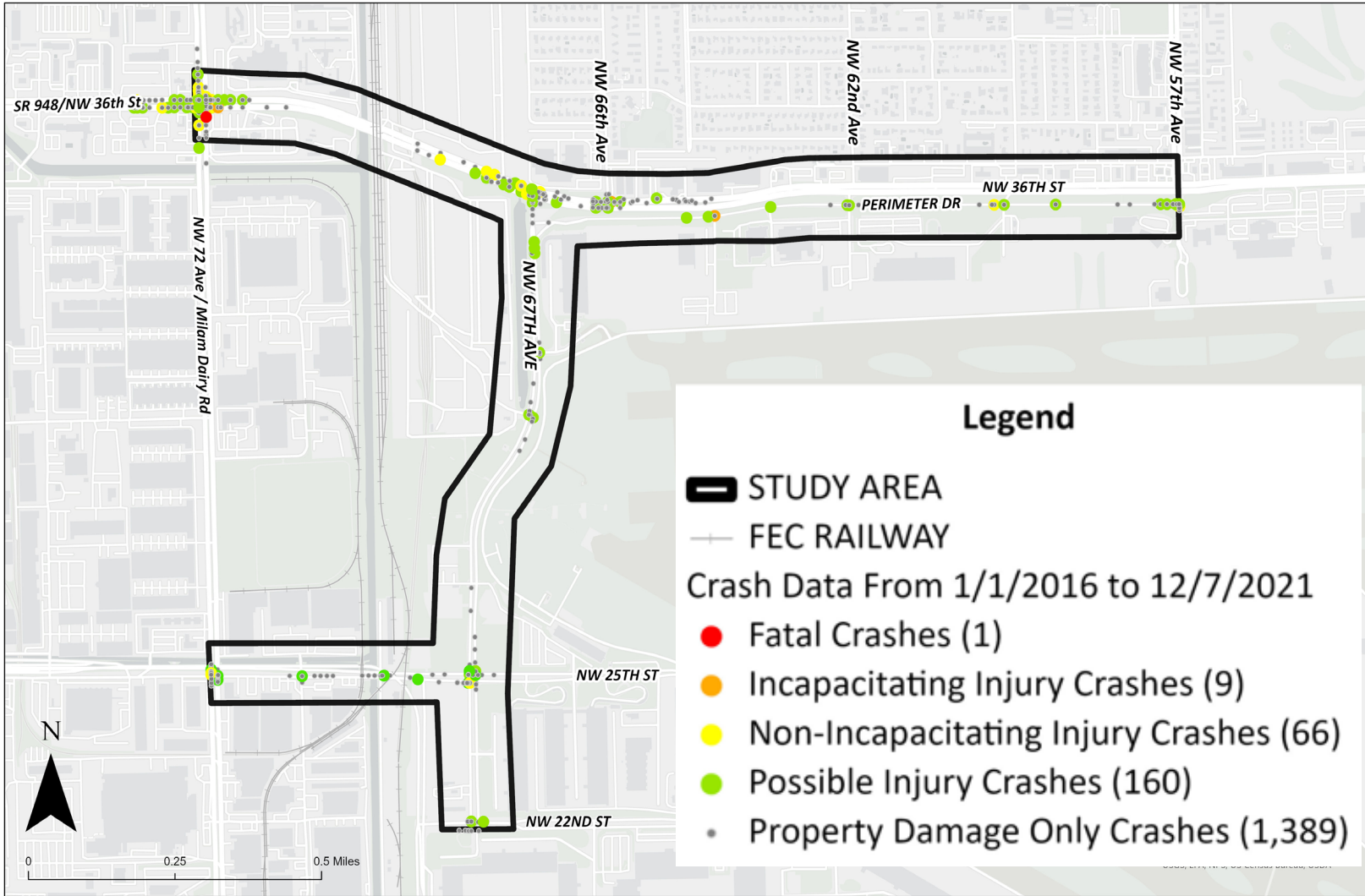
# Traffic Conditions

Average Annual Daily Traffic (2021)\*



\*Source: Florida Traffic Online





## CRASHES\* BY THE NUMBERS

**1,626 TOTAL**

**11 PEDESTRIAN**

**5 BICYCLE**

**1 FATAL**

**9 INCAPACITATING INJURY**



\*Source: Signal 4 Analytics – Florida Traffic Safety Dashboard, Crash Analysis Reporting (CAR) System – Reports and Database and FDOT State Safety Office (SSO) GIS web application



# Vision Zero

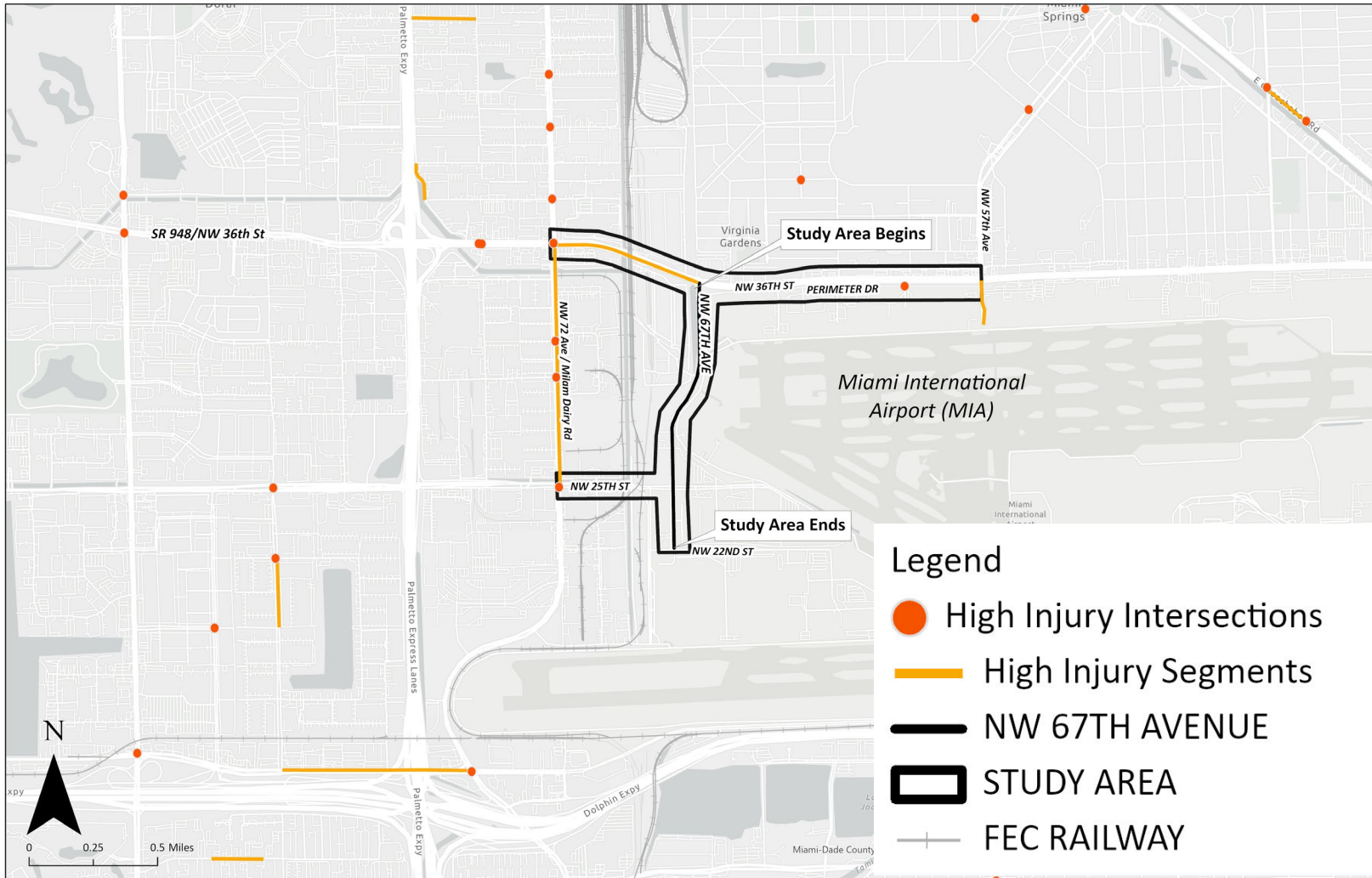


# HIGH INJURY CLUSTERS:

- SR 969/NW 72 Avenue & SR 948/NW 36 Street
- Perimeter Drive & NW 59 Avenue
- SR 969/NW 72 Avenue & NW 32 Street
- SR 969/NW 72 Avenue & NW 31 Street
- SR 969/NW 72 Avenue & NW 25 Street

# SEGMENTS:

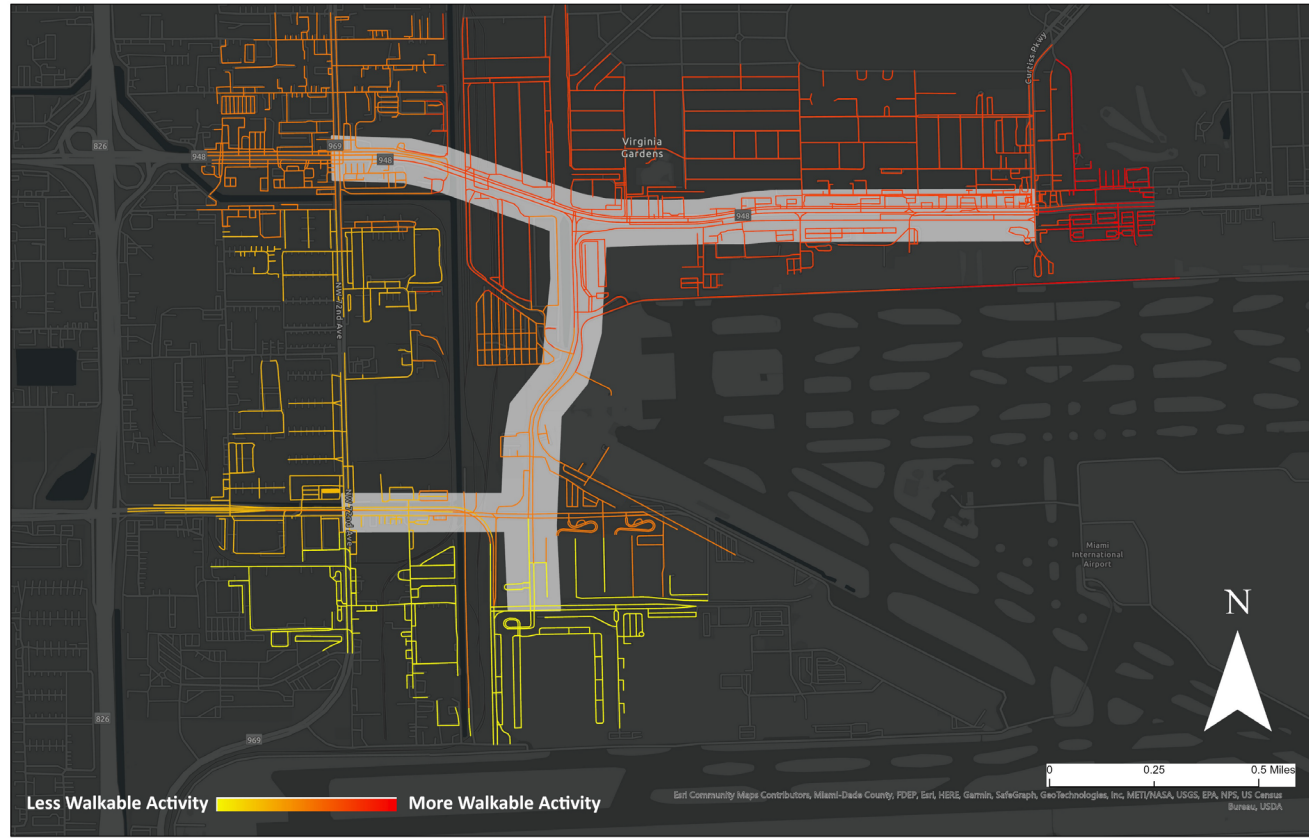
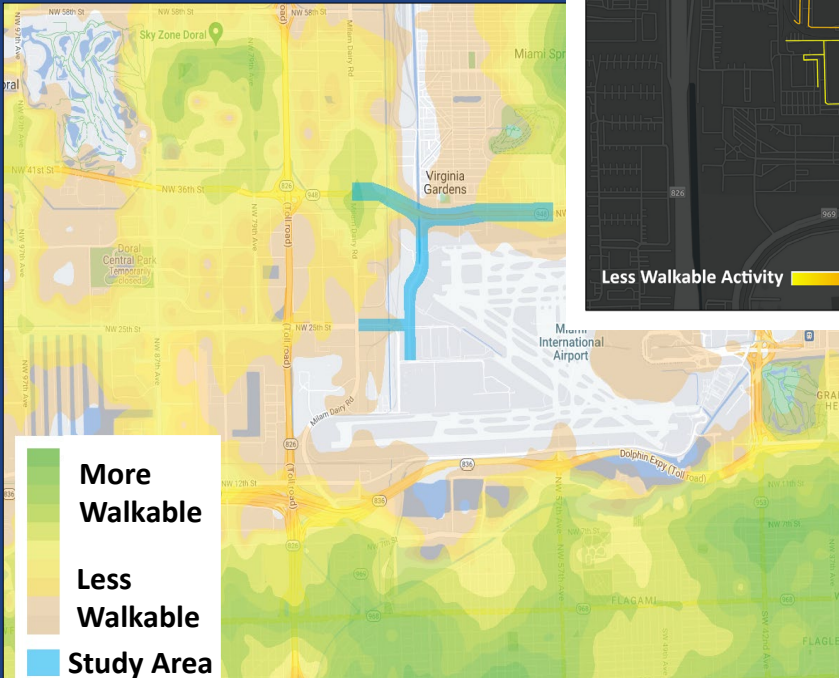
- SR 948/NW 36 Street from SR 969/NW 72 Avenue to NW 67 Avenue
- NW 57 Avenue/Curtiss Parkway from SR 948/NW 36 Street to Perimeter Drive
- SR 969/NW 72 Avenue from SR 948/NW 36 Street to NW 25 Street





# Other considerations - Pedestrian Facilities

## WalkScore Pedestrian Heat Map



## Strava Pedestrian Heat Map

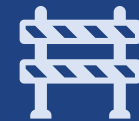
## Overview



Low walkability



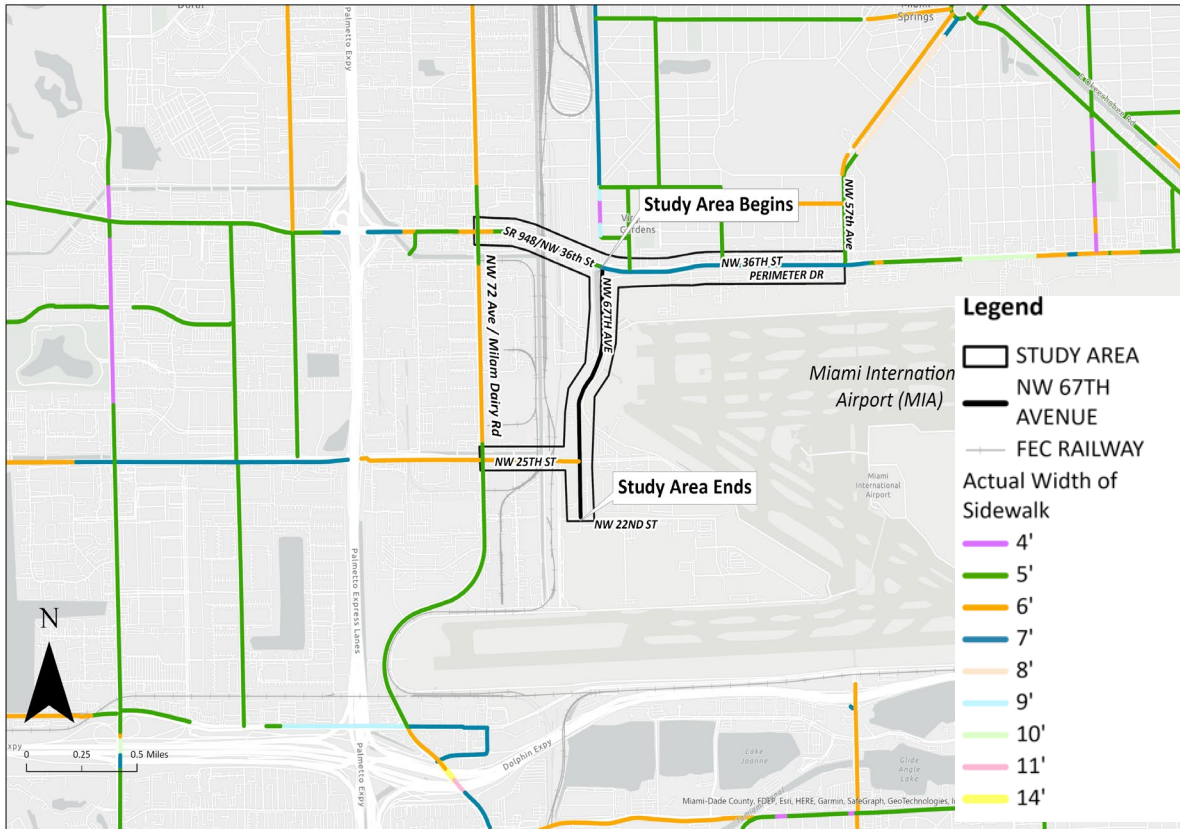
No sidewalks on NW 67 Avenue, Perimeter Drive



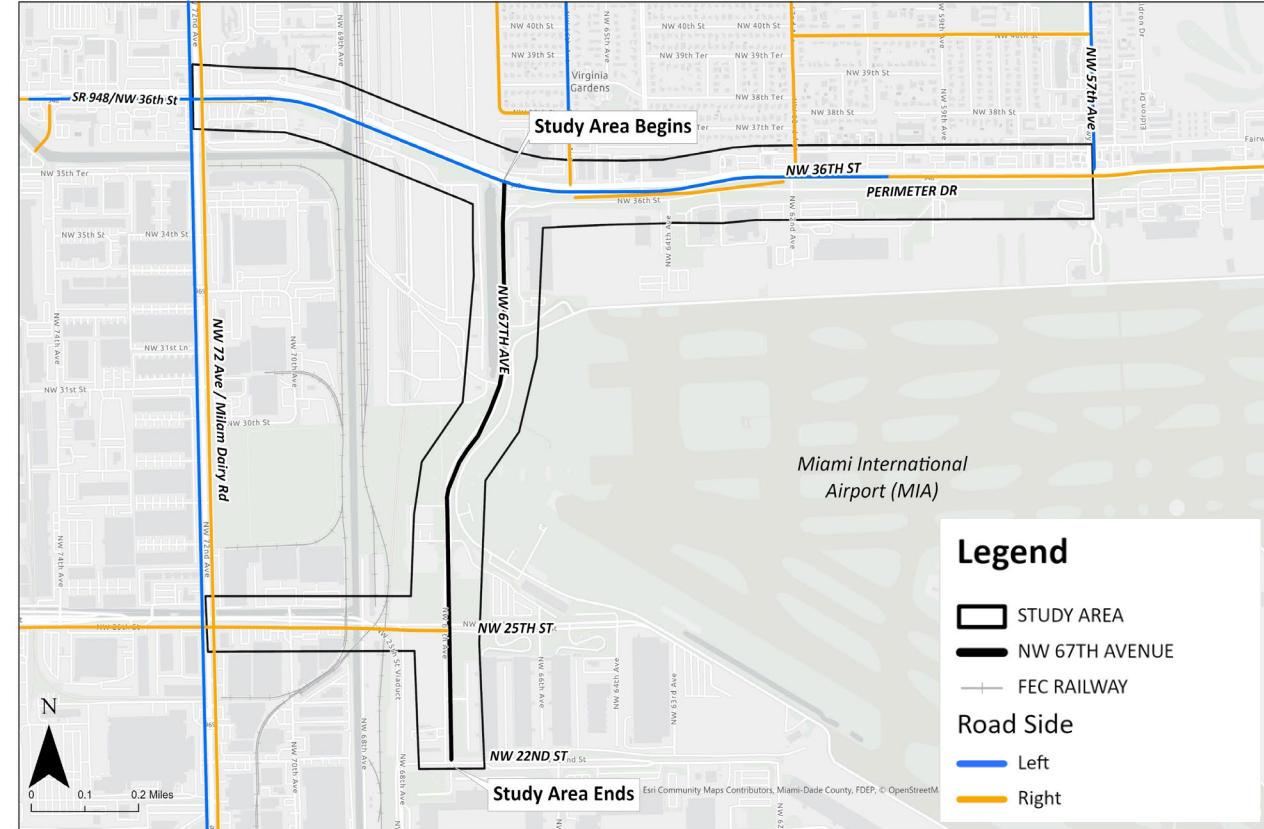
Sidewalk gaps on SR 948/NW 36 Street and NW 25 Street



## Sidewalk Width



## Sidewalk Gap



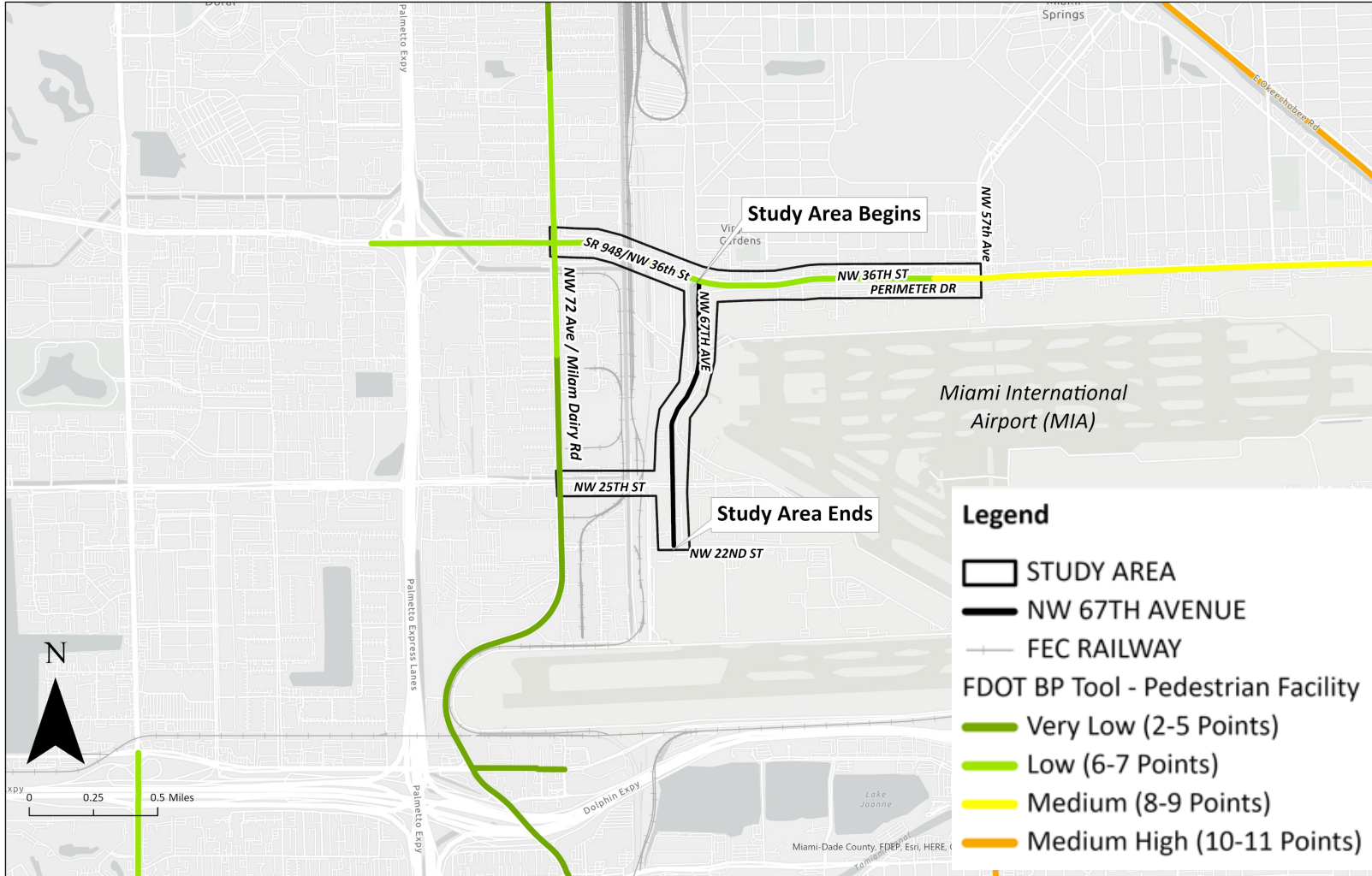
## Overview

- The width of sidewalks within the study area is either 6 or 7 feet
- No sidewalks on NW 67 Avenue and Perimeter Drive
- Sidewalk gaps on SR 948/NW 36 Street and NW 25 Street





## FDOT Bicycle/Pedestrian Tool – Pedestrian Facility Needs



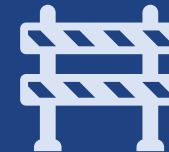
## Overview



Low and medium pedestrian facility prioritization



No sidewalks on NW 67 Avenue & Perimeter Drive



Sidewalk gaps on SR 948/NW 36 Street and NW 25 Street

## Strava Bicycle Heat Map



## Overview

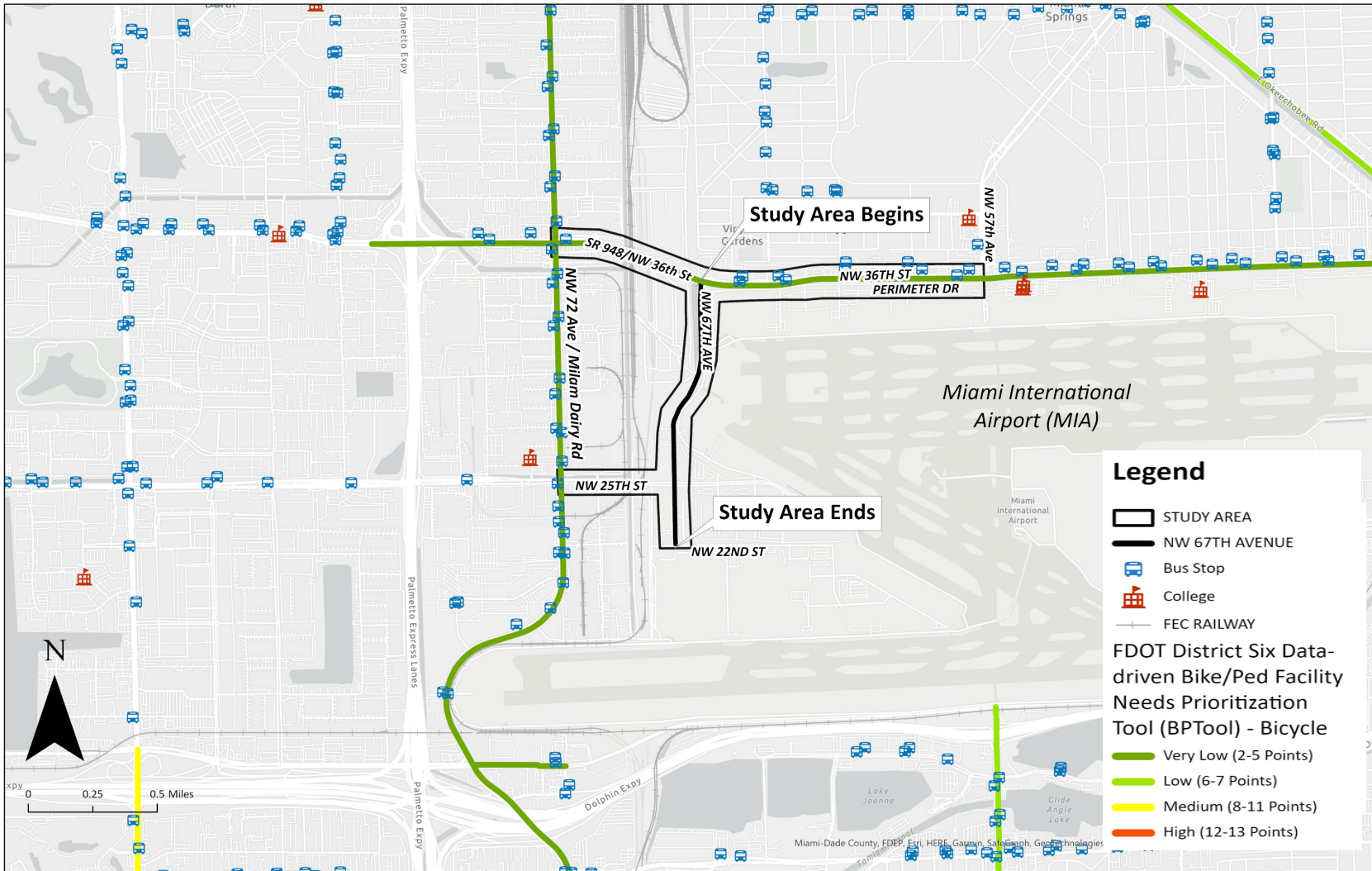
- Limited Bicycle Lanes
- Frequent route for cyclists





# Other Considerations - Bicycle Facilities

## FDOT Bicycle/Pedestrian Tool – Bicycle Facility Needs



## Overview

- Very Low and Low Bicycle Facility Prioritization
- Bus Stops only available on SR 948/NW 36 Street





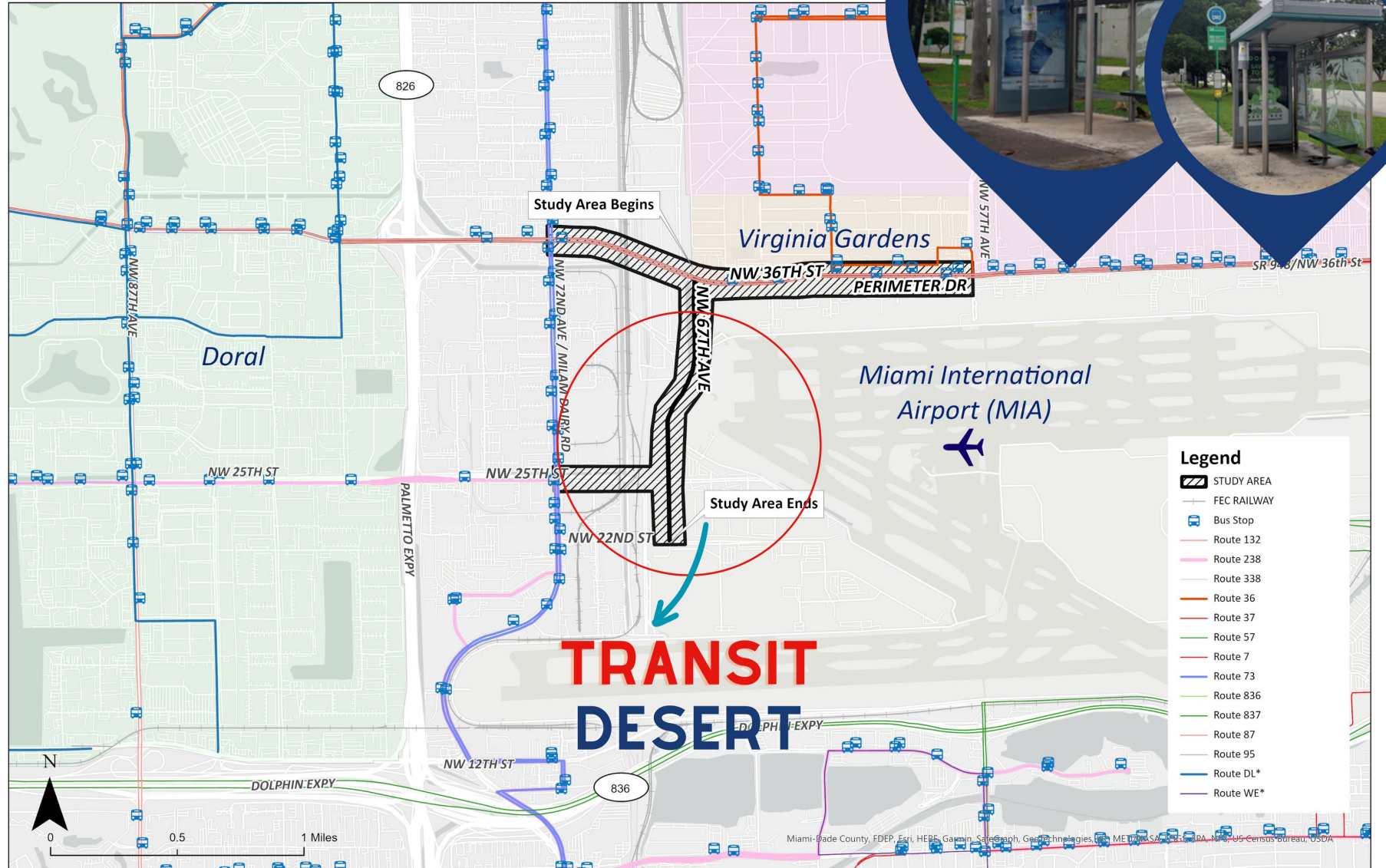


# Other Considerations - Transit Facilities

## MIAMI-DADE COUNTY

### Routes:

- 36/36A/36B
- 73
- 95
- 132
- 238





# Public Involvement

Outreach and Feedback



# Public Outreach



**Miami-Dade Transportation  
Planning Organization**



## Outreach Activities

Public Workshops

Project Advisory Team

Elected Official Briefings

FDOT Leadership Briefings

Stakeholder Presentations

Online Public Survey





# What's Next?

## Project Schedule

[V] Virtual  
[P] In-Person

### ONLINE PUBLIC SURVEY

#### Kick-Off

FDOT Leadership Briefing  
PAT Meeting #1 [V]  
Public Workshop #1 [P]  
Public Workshop #1 [V]



Continuous  
Marketing

SPRING  
2023

#### Development of Alternatives

Elected Officials Briefings  
PAT Meeting #2 [P]  
Public Workshop #2 [V]  
Presentations to Committees  
Presentations to Stakeholders

SUMMER  
2023

#### Alternatives

FDOT Leadership Briefing  
Elected Officials Briefings  
PAT Meeting #3 [V]  
Presentations to Committees  
Presentations to Stakeholders

FALL  
2023

#### Final Alternatives

Public Workshop #3 [P]  
Public Workshop #3 [V]

WINTER  
2023

# FDOT | Contact Us



**FDOT PROJECT MANAGER**  
Daniel Lameck  
District 6

[Daniel.Lameck@dot.state.fl.us](mailto:Daniel.Lameck@dot.state.fl.us)  
(305) 470-5238



**CONSULTANT PROJECT MANAGER**  
Jesús Fuentes, P.E.  
EXP U.S. Services, Inc.

[jesus.fuentes@exp.com](mailto:jesus.fuentes@exp.com)  
(954) 495-6341



**COMMUNITY OUTREACH SPECIALIST**  
Amy Elmore, AICP  
EXP U.S. Services, Inc.

[amy.elmore@exp.com](mailto:amy.elmore@exp.com)  
(813) 469-2437

Visit the Project Website:

[www.southflroads.com/nw67avenue](http://www.southflroads.com/nw67avenue)



@MyFDOTMiami

# FDOT | Questions?

- Virtual attendees submit your comments in the “Questions” box
- If you would like to speak, please use the “Raise Hand” button on your GoToWebinar panel and you will be unmuted
- Participants will have three minutes to provide comments
- Please clearly state your name and address







**TARGET**

**ZERO**

**FATALITIES & SERIOUS INJURIES**

