



DISTRICT SIX

NW 67 AVENUE FROM NW 36 STREET TO NW 22 STREET

# NW 67 AVENUE IMPROVEMENTS

## Freight Intermodal Connector Analysis

FM NO. 436426-1-12-01

Project Advisory Team Meeting #1

May 30, 2023 – 10:00 a.m. - 12:00 p.m.





Si usted necesita traducción durante esta reunión, por favor comuníquese con nosotros. Usted puede levantar la mano o pedir ayuda a través del chat y un miembro de nuestro equipo lo asistirá.

---



# Elected Officials

We would like to recognize any federal, state, county, or city officials who may be present.

Please select the “Raise Hand” feature on the control panel.

---



The Florida Department of Transportation complies with various non-discrimination laws and regulations, including:

**Title VI of the Civil Rights Act of 1964**

*Public Participation is being held without regard to race, color, national origin, age, sex, religion, disability, or family status.*

---

**For questions or concerns, you may contact either:**

**District Six**

Florida Department of Transportation

*Title VI Coordinator (interim)*

**Tish Burgher**

1000 NW 111 Avenue

Miami, Florida 33172

(305) 470-5277

[Tish.Burgher@dot.state.fl.us](mailto:Tish.Burgher@dot.state.fl.us)

**Tallahassee Office**

Florida Department of Transportation

*State Title VI Coordinator*

**Stefan Kulakowski**

605 Suwannee Street, MS 65

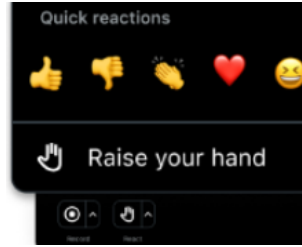
Tallahassee, Florida 32399

(850) 414-4742

[stefan.kulakowski@dot.state.fl.us](mailto:stefan.kulakowski@dot.state.fl.us)



*This recording and transcript will be available after the meeting.*



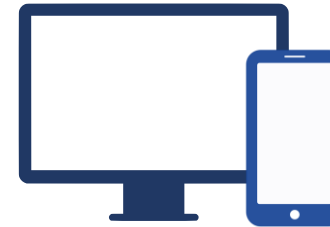
*Use the "React" button to raise your hand and ask a question.*



*Please keep your microphone muted and your camera off.*



*Use the "Chat" feature to ask the presenters a question.*



*Features may look different on a desktop and mobile device.*

***This meeting is being recorded.***



---

***Technical Issues? Contact [Yaisel@iscprgroup.com](mailto:Yaisel@iscprgroup.com)***





NW 67 AVENUE FROM NW 36 STREET TO NW 22 STREET

# NW 67 AVENUE IMPROVEMENTS

FM NO. 436426-1-12-01

## Meet Your Team



**FDOT PROJECT MANAGER**  
Daniel Lameck  
District 6

[Daniel.Lameck@dot.state.fl.us](mailto:Daniel.Lameck@dot.state.fl.us)  
(305) 470-5238



**CONSULTANT PROJECT MANAGER**  
Jesús Fuentes, P.E.  
EXP U.S. Services, Inc.

[jesus.fuentes@exp.com](mailto:jesus.fuentes@exp.com)  
(954) 495-6341



**COMMUNITY OUTREACH SPECIALIST**  
Amy Elmore, AICP  
EXP U.S. Services, Inc.

[amy.elmore@exp.com](mailto:amy.elmore@exp.com)  
(813) 469-2437

## Meeting Agenda

- Welcome and Introductions
- Project Overview
  - Performance Measures
  - Existing Conditions
  - Public Involvement
- Breakout Groups
- Q & A
- Wrap Up

Visit the Project Website:

[www.fdotmiamidade.com/nw67avenue](http://www.fdotmiamidade.com/nw67avenue)



@MyFDOTMiami

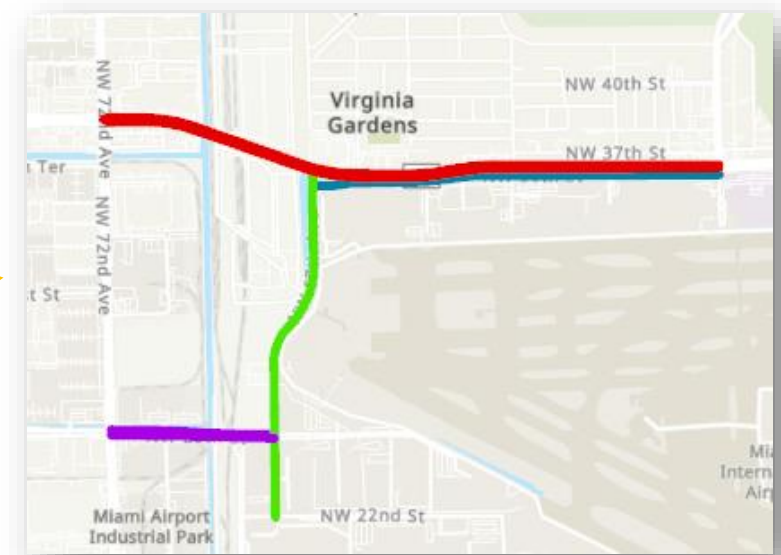
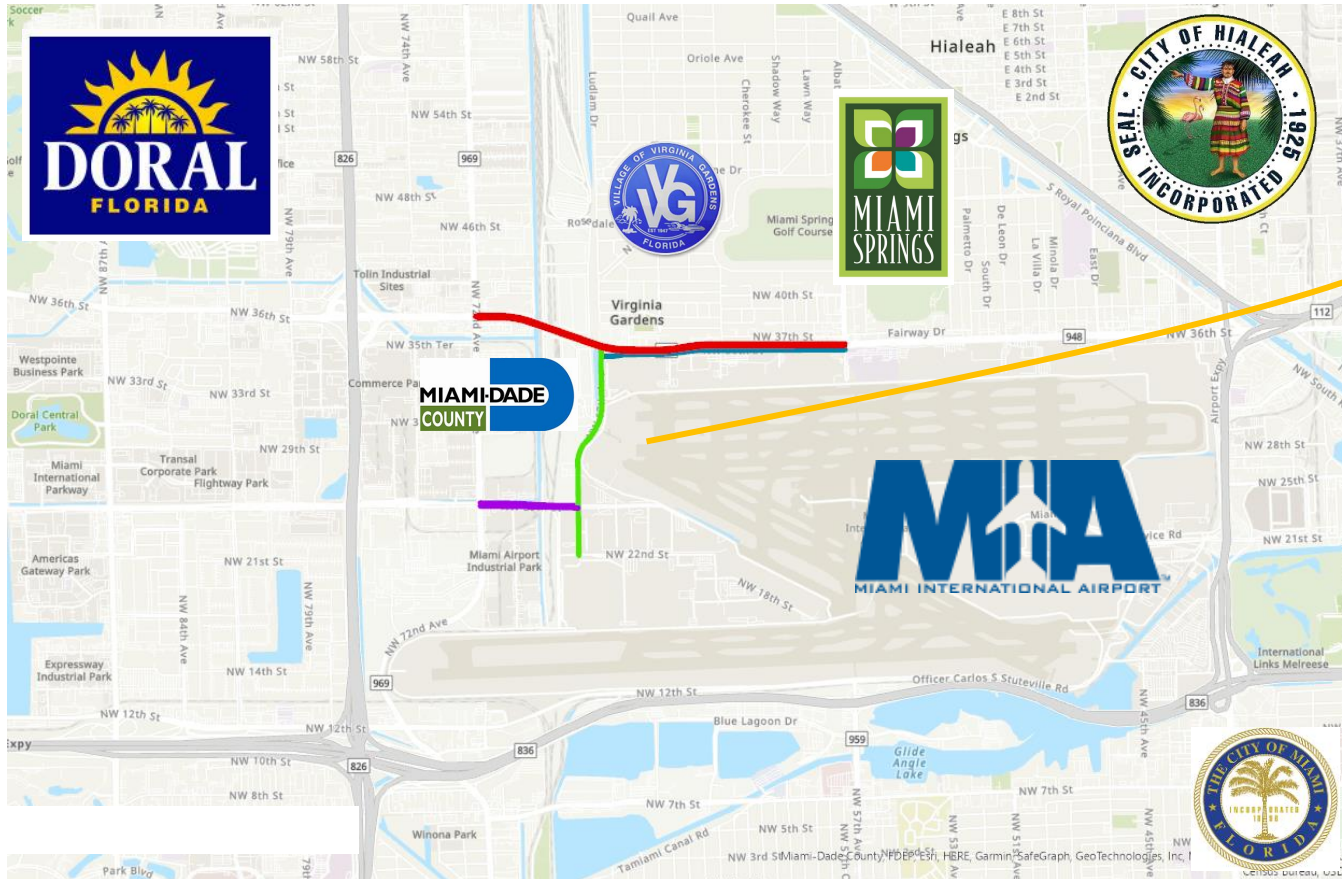
# Project Overview









# Project Location Map

The study area is 0.81 miles long from NW 36 Street to NW 22 Street.



## Segments

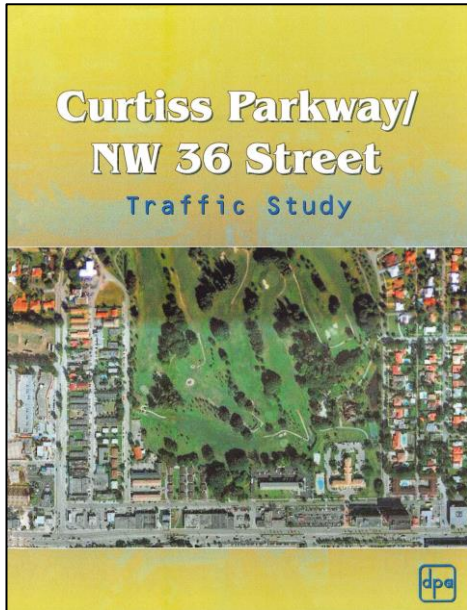
-  NW 36 Street
-  Perimeter Drive
-  NW 67 Avenue
-  NW 25 Street





# History of the Corridor

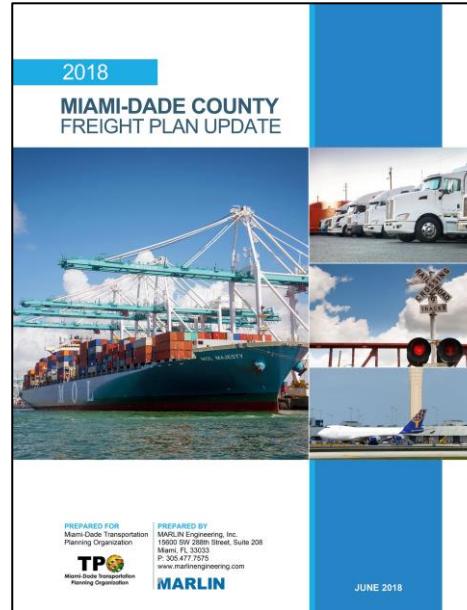
**2009**



**2017**



**2018**



**2019**



**2020**





# Purpose and Need



Regular and Significant Congestion



Transit Access only on NW 36 Street and NW 72 Avenue



2 Million+ Tons of Cargo in 2021 at MIA



3 Historic Resources



Multiple locations with frequent crashes







# Performance Measures



# NW 67 Avenue Study Corridor Goals



Increase  
Safety and  
Security



Improve Efficient  
and Reliable  
Mobility



Support  
Economic  
Vitality and  
Competitiveness



Improve  
Multimodal  
Access for All



Preserve and  
Protect the  
Environment



Enhance  
Integration and  
Connectivity



# Alternative Analysis Process



Public Involvement and Stakeholder Coordination



Data  
Collection  
and Analysis



Existing  
Condition  
Analysis



Development  
of Project  
Description  
and Project  
Need



Development  
of Conceptual  
Alternatives



Evaluation of  
Conceptual  
Alternatives



Final  
Recommendation  
and Action Plan





# Selection of Alternatives



## No-Build Alternative

Maintain existing conditions with no additional future improvements



## Transportation Systems Management & Operations (TSM&O) Alternatives

Evaluating transportation systems management and operations



## Build Alternatives

Providing space for other purposes



# Existing Conditions

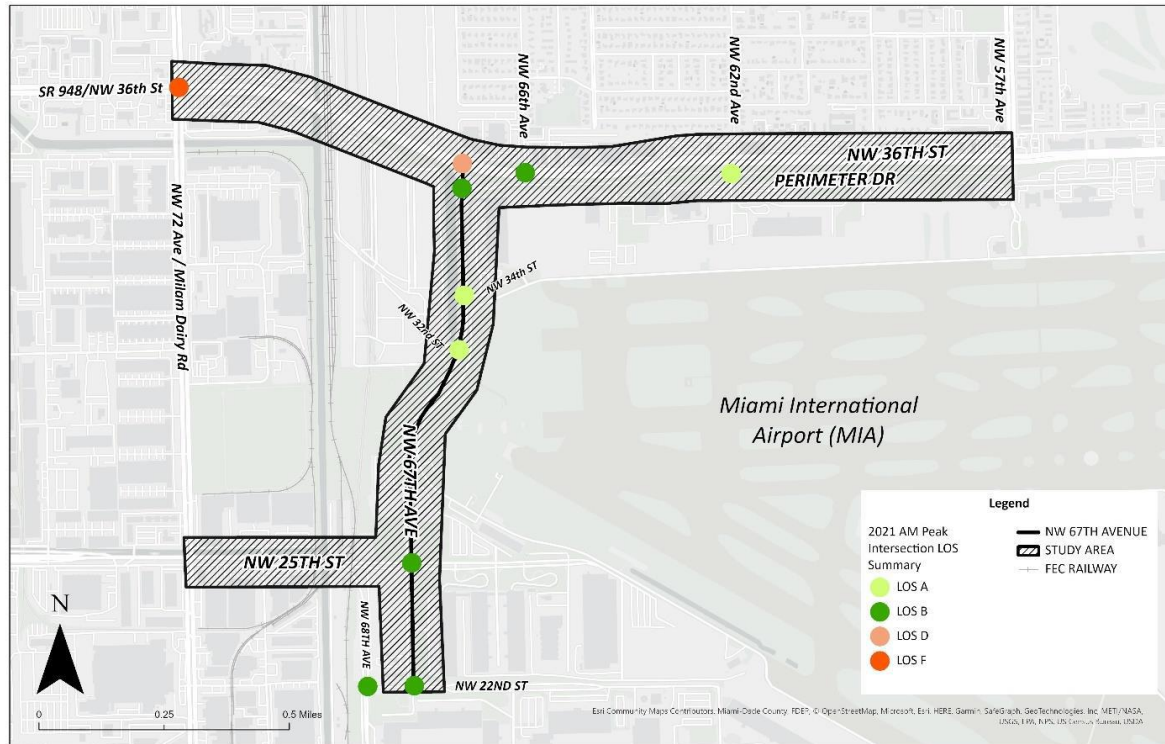
# FDOT | NW 67 Avenue



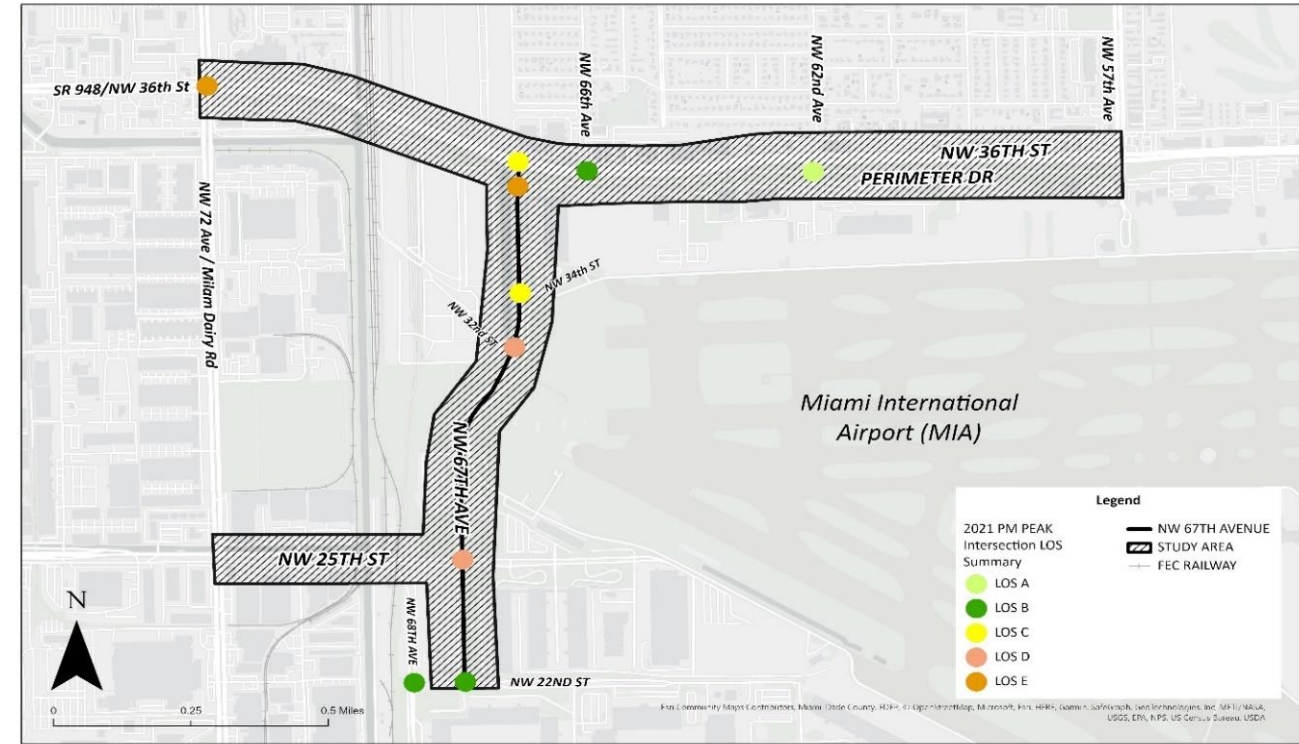


# FDOT | Traffic Conditions

## AM Peak Hour Level of Service (2021)



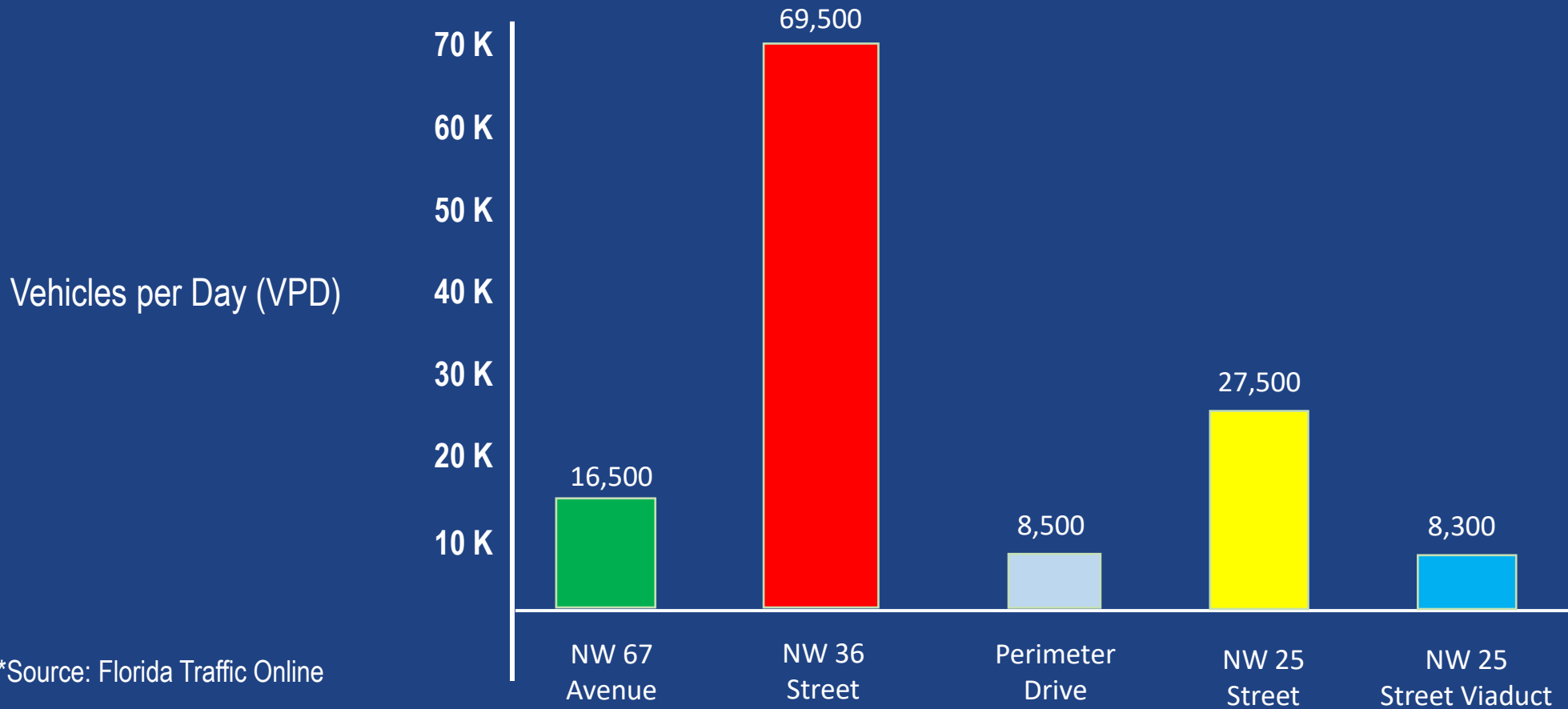
## PM Peak Hour Level of Service (2021)





# Traffic Conditions

Average Annual Daily Traffic (2021)\*



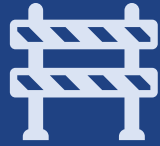
\*Source: Florida Traffic Online





# Crash Conditions

Crashes from 1/1/2016 to 12/7/2021



## CRASHES BY THE NUMBERS

1,626 TOTAL

11 PEDESTRIAN

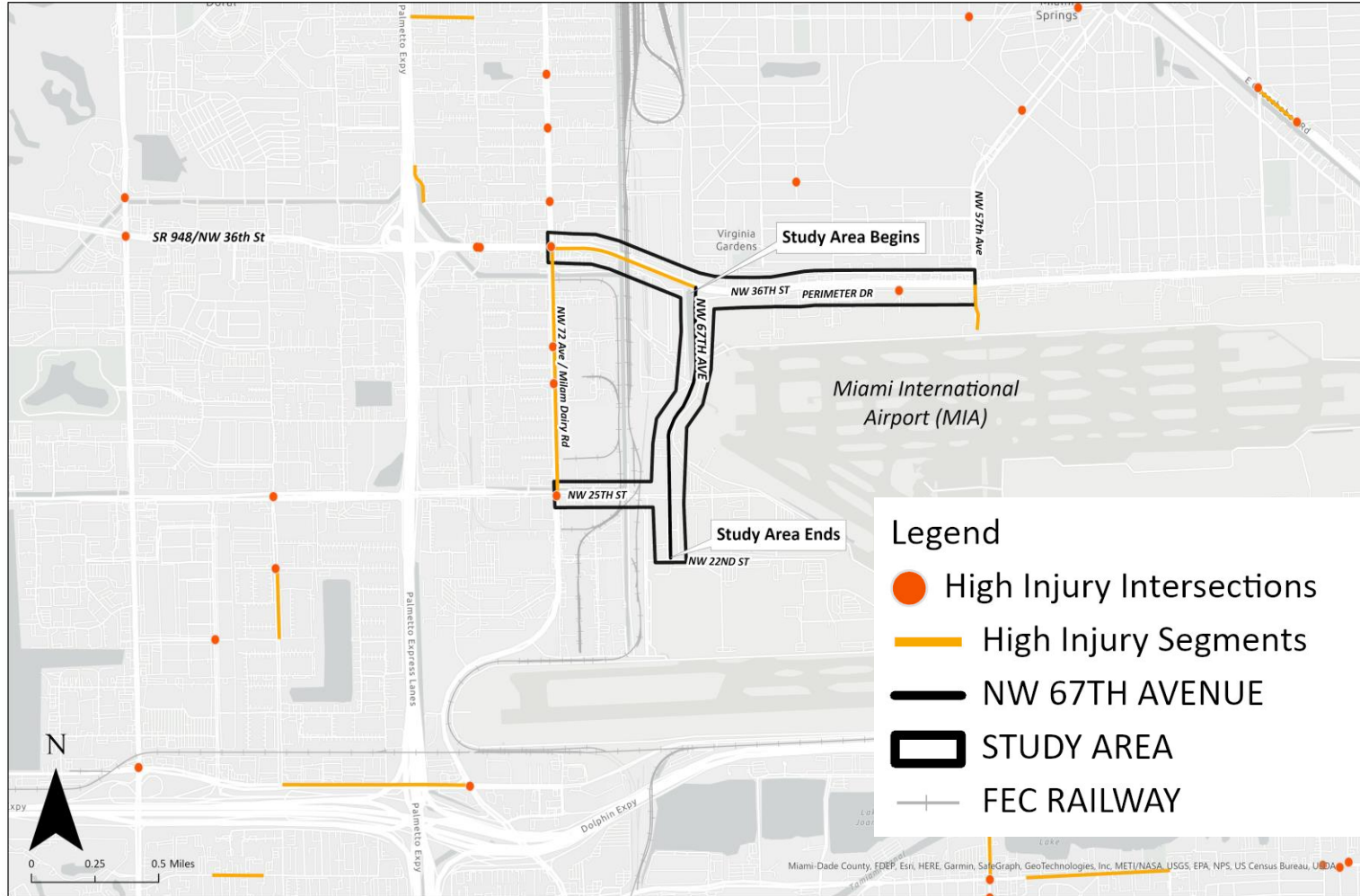
5 BICYCLE

1 FATAL

9 INCAPACITATING INJURY

\*Source: Signal 4 Analytics – Florida Traffic Safety Dashboard, Crash Analysis Reporting (CAR) System – Reports and Database and FDOT State Safety Office (SSO) GIS web application





✓ High Injury Clusters (HICs):

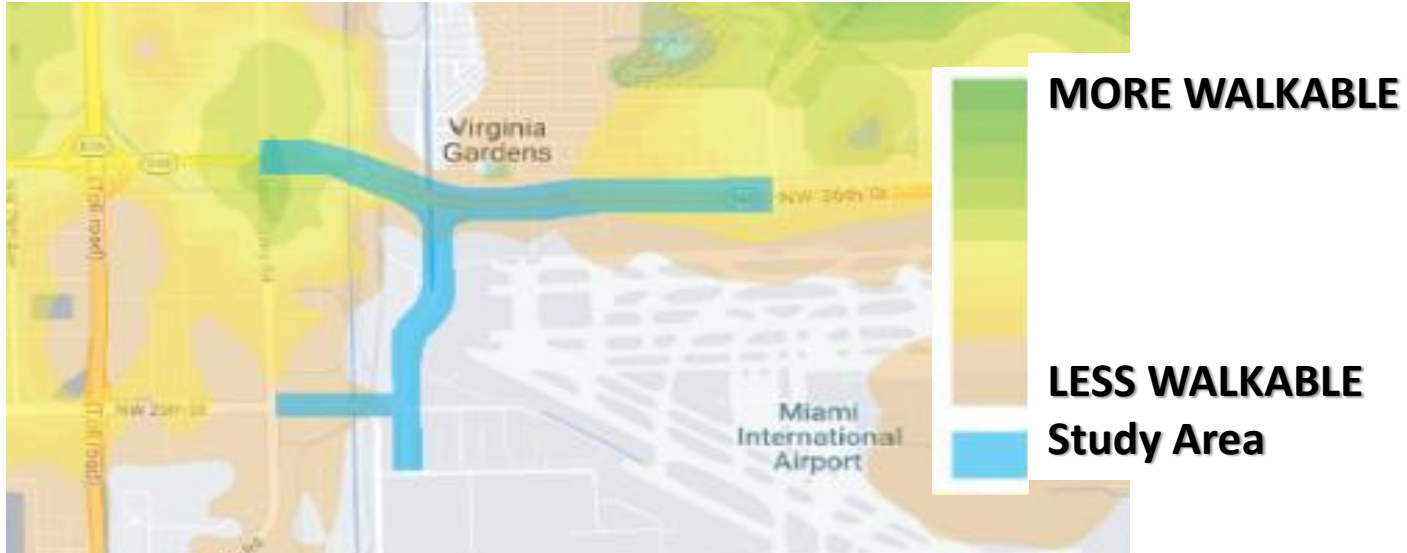
- NW 72 Avenue/NW 36 Street
- Perimeter Drive/NW 59 Avenue
- NW 72 Avenue/NW 32 Street
- NW 72 Avenue/NW 31 Street
- NW 72 Avenue/NW 25 Street

✓ High Injury Segments (HISs):

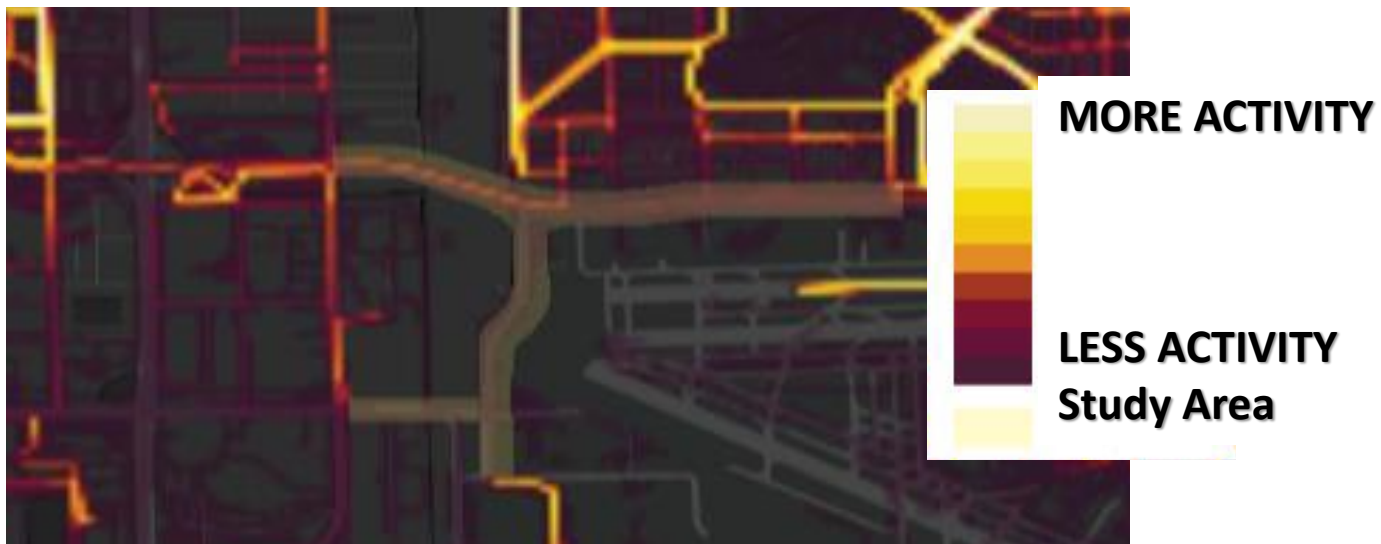
- NW 36 Street from NW 72 Avenue to NW 67 Avenue
- NW 57 Avenue/Curtiss Parkway from NW 36 Street to Perimeter Drive
- NW 72 Avenue from NW 36 Street to NW 25 Street

# FDOT | Pedestrian Facilities

Walkscore's Walkability Heat Map



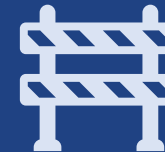
Strava Pedestrian Activity Map



Low walkability



No sidewalks on NW 67 Avenue, Perimeter Drive

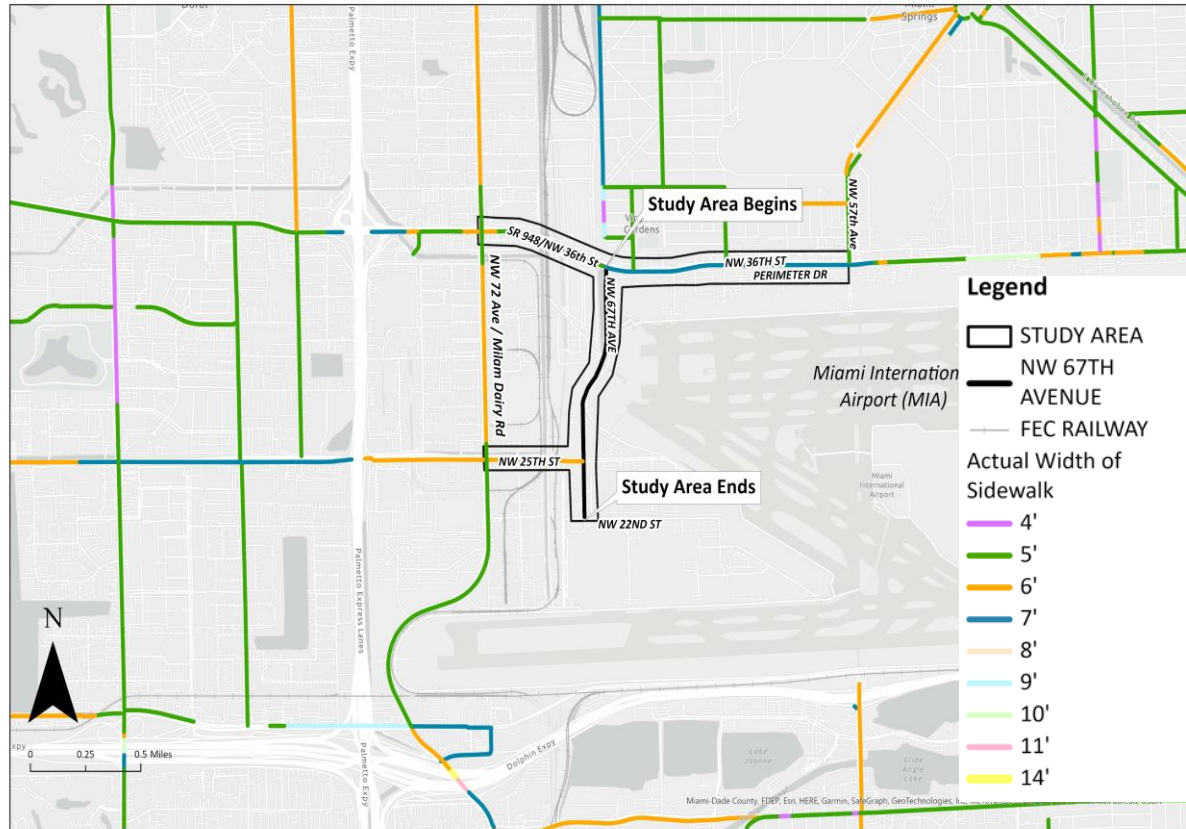


Sidewalk gaps on NW 36 Street and NW 25 Street

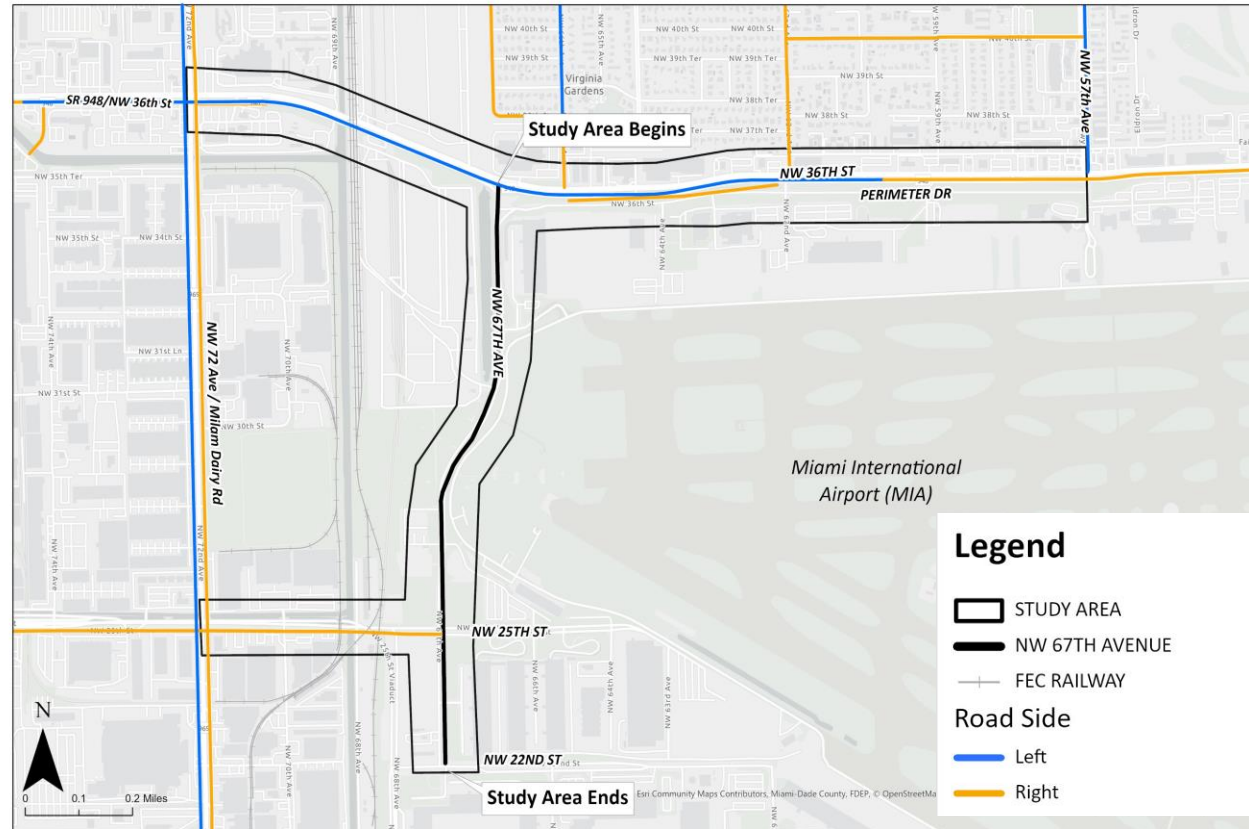


# FDOT | Pedestrian Facilities

## Sidewalk Width



## Sidewalk Gap

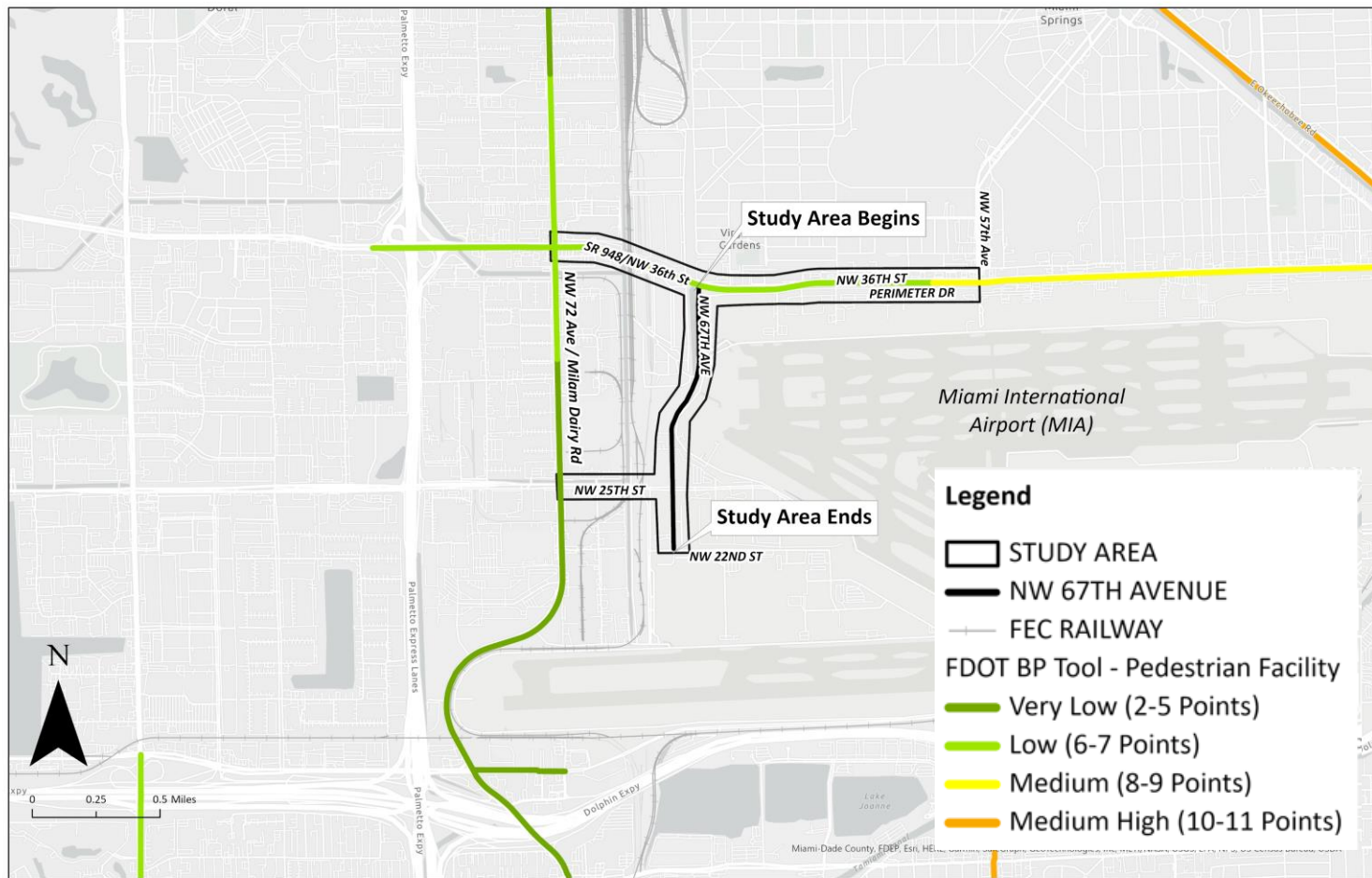


- Sidewalks' width within study area are 6' and 7'
- No sidewalks on NW 67 Avenue and Perimeter Drive
- Sidewalk gaps on NW 36 Street and NW 25 Street



# Pedestrian Facilities

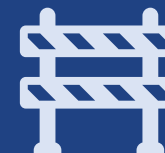
## FDOT Bicycle/Pedestrian Tool – Pedestrian Facility Needs



Low and Medium  
Pedestrian Facility Needs



No sidewalks on NW 67  
Avenue, Perimeter Drive



Sidewalk gaps on NW 36  
Street and NW 25 Street





# Bicycle Facilities

## Existing Bicycle Facilities



Limited Bicycle Lanes

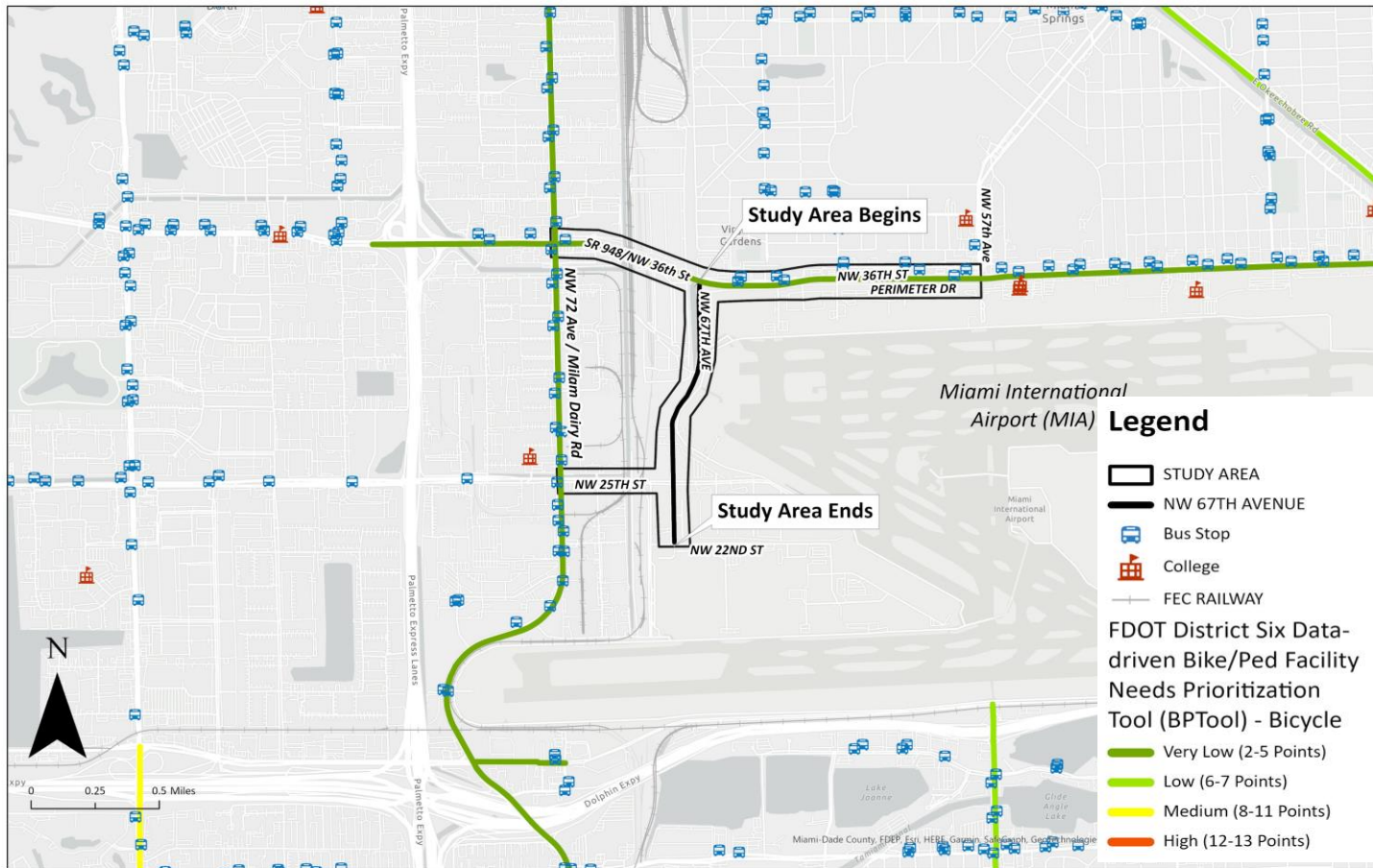


Frequent route for cyclists



# Bicycle Facilities

## FDOT Bicycle/Pedestrian Tool – Bicycle Facility Needs

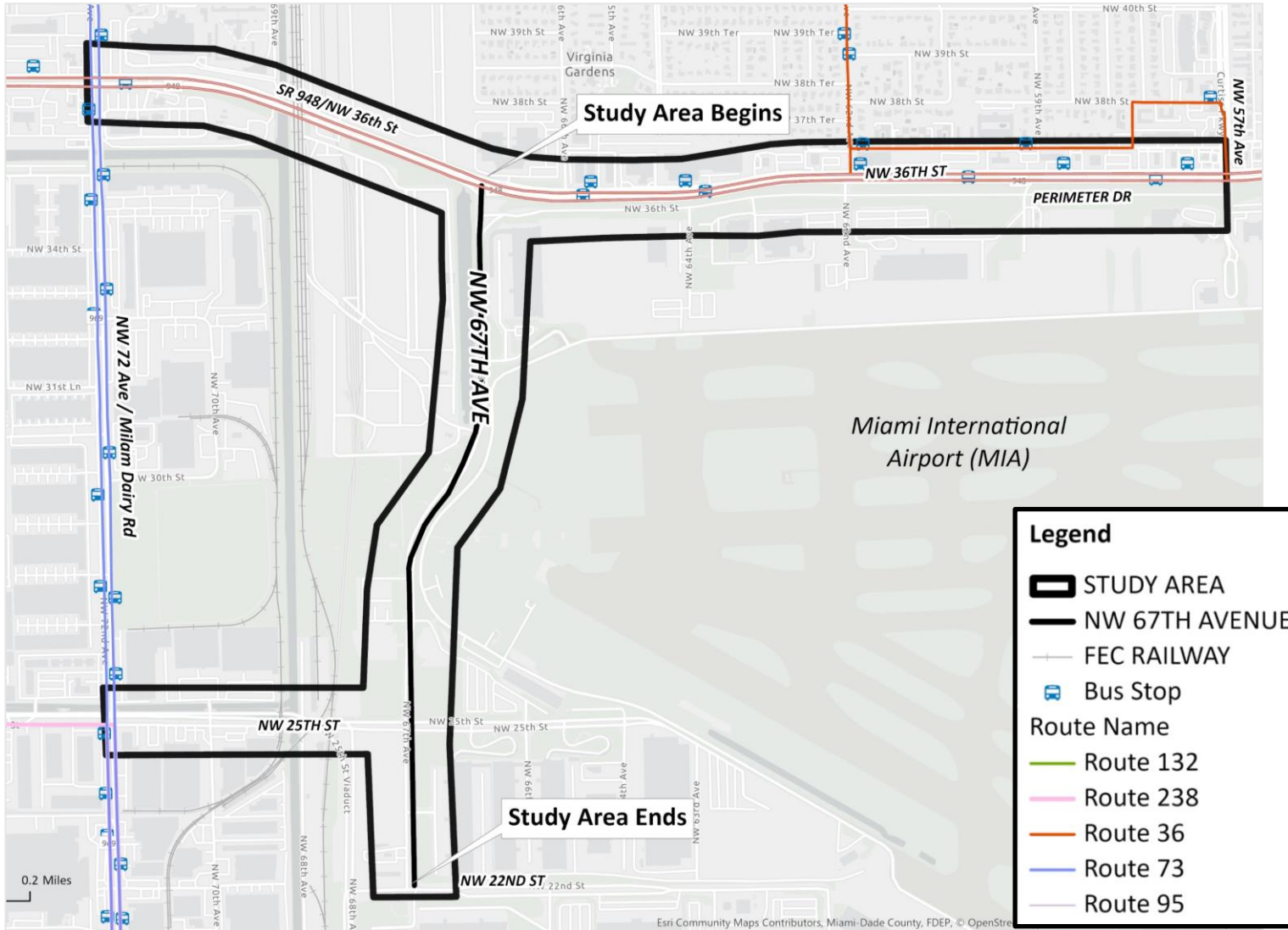


Very Low and Low Bicycle Facility Needs



# FDOT | Transit Facilities

## Transit Stops in Study Area



## Metrobus Routes



- 36/36A/36B
- 132
- 95
- 73
- 238







# Freight Facilities in Study Area

## Truck Traffic (2021)\*

NW 36 Street



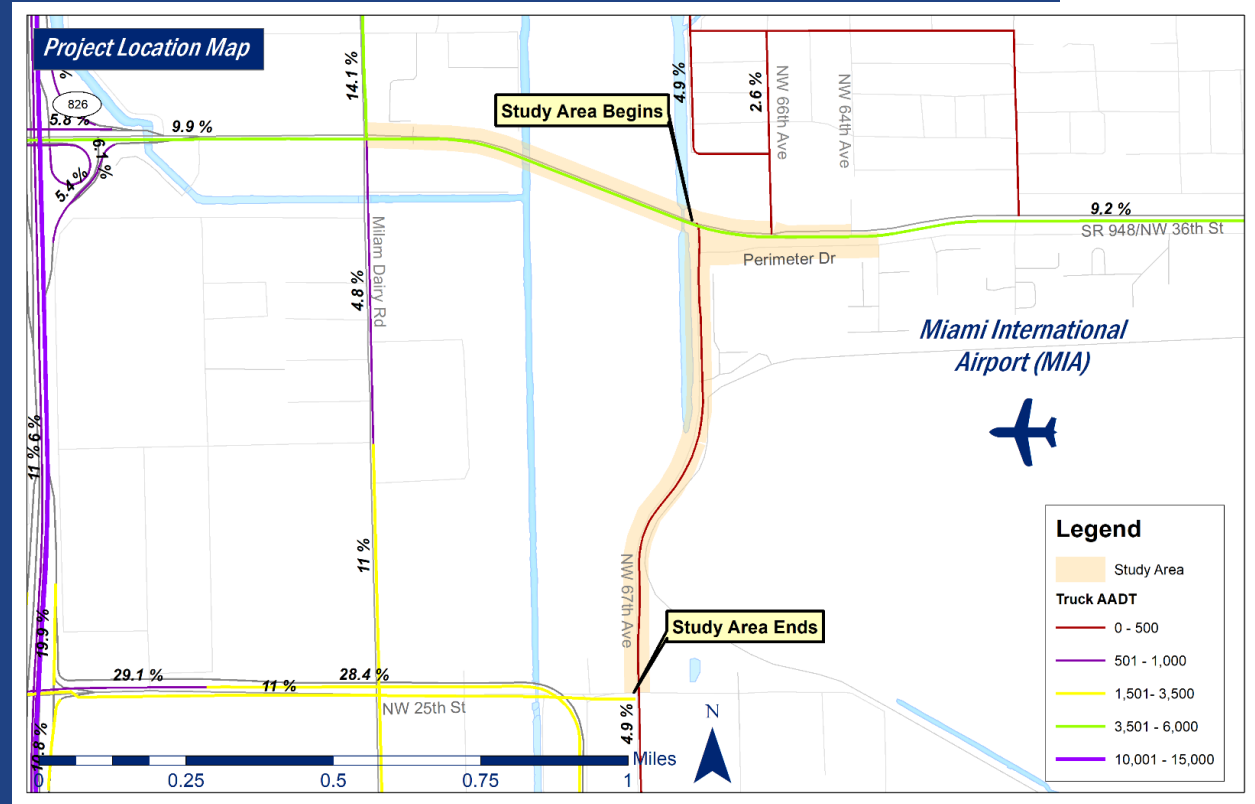
NW 25 Street



NW 25 Street Viaduct



NW 67 Avenue



## Freight Facilities

MIA | UPS | FedEx | DHL Express |  
Many processing/distribution warehouses

\*Source: FDOT Transportation Data & Analytics Office (TDA)



# Public Involvement

Outreach and Feedback

# FDOT | Public Outreach



## Outreach Activities

Public Workshops

Project Advisory Team

Elected Official Briefings

FDOT Leadership Briefings

Stakeholder Presentations

Online Public Survey

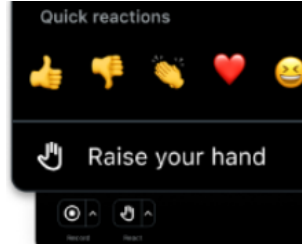




# Breakout Groups



*You may turn on your camera and microphone in breakout rooms.*



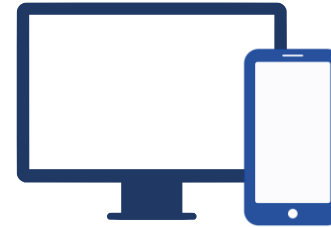
*Use the "React" button to raise your hand and ask a question.*



*Please be respectful and allow everyone an opportunity to speak.*



*Use the "Chat" feature to ask the presenters a question.*



*Features may look different on a desktop and mobile device.*

*20 minutes*

---

***Technical Issues? Contact [Yaisel@iscprgroup.com](mailto:Yaisel@iscprgroup.com)***

The logo for the Florida Department of Transportation (FDOT) features the letters "FDOT" in a bold, blue, sans-serif font. To the right of the text is a stylized outline of the state of Florida, also in blue, with a red swoosh underneath it. A vertical line separates the logo from the main title.

# FDOT | Breakout Group Discussion Questions

1. What are your most important priorities for this area and/or community as we continue to grow?
2. What characteristics of this area and/or your community do you feel need to be preserved as we continue growing?
3. How can we reach our communities better through public engagement?
4. Is there anything else we should think about throughout this process?





# | Report Back and Wrap Up



# What's Next?

## Project Schedule

[V] Virtual  
[P] In-Person

### ONLINE PUBLIC SURVEY

#### Kick-Off

- FDOT Leadership Briefing
- PAT Meeting #1 [V]
- Public Workshop #1 [P]
- Public Workshop #1 [V]



Continuous Marketing



#### Development of Alternatives

- Elected Officials Briefings
- PAT Meeting #2 [P]
- Public Workshop #2 [V]
- Presentations to Committees
- Presentations to Stakeholders

#### Alternatives

- FDOT Leadership Briefing
- Elected Officials Briefings
- PAT Meeting #3 [V]
- Presentations to Committees
- Presentations to Stakeholders

#### Final Alternatives

- Public Workshop #3 [P]
- Public Workshop #3 [V]

SPRING  
2023

SUMMER  
2023

FALL  
2023

WINTER  
2023

# FDOT | Contact Us



**FDOT PROJECT MANAGER**  
Daniel Lameck  
District 6

[Daniel.Lameck@dot.state.fl.us](mailto:Daniel.Lameck@dot.state.fl.us)  
(305) 470-5238



**CONSULTANT PROJECT MANAGER**  
Jesús Fuentes, P.E.  
EXP U.S. Services, Inc.

[jesus.fuentes@exp.com](mailto:jesus.fuentes@exp.com)  
(954) 495-6341



**COMMUNITY OUTREACH SPECIALIST**  
Amy Elmore, AICP  
EXP U.S. Services, Inc.

[amy.elmore@exp.com](mailto:amy.elmore@exp.com)  
(813) 469-2437

Visit the Project Website:

[www.fdotmiamidade.com/nw67avenue](http://www.fdotmiamidade.com/nw67avenue)



@MyFDOTMiami



# FDOT | Questions?

- Virtual attendees submit your comments in the “Questions” box
- If you would like to speak, please use the “Raise Hand” button on your GoToWebinar panel and you will be unmuted
- Participants will have three minutes to provide comments
- Please clearly state your name and address





**TARGET**

**ZERO**

**FATALITIES & SERIOUS INJURIES**

