



## **PUBLIC INVOLVEMENT PLAN**

Project Name: The Atlantic Isle Bridge PD&E Study (Bridge No. 874218)  
Project Limits: Atlantic Isle at West of State Road A1A  
County/State: Miami-Dade County, Florida  
Financial Management Number: 430029-2  
Federal Aid Project Number: D620-010-B  
Efficient Transportation Decision Making (ETDM): 14413

In accordance with Part 1, Chapter 11 of the **Project Development and Environment (PD&E) Manual**, this Public Involvement Plan is submitted to the manager of the District office in charge of PD&E studies as appropriate based on District organizational structure for his/her review and approval.

Updated by: Monica Diaz  
Community Outreach Specialist  
Infinite Source Communications Group

Date: February 28, 2024

Approved by: Dat Huynh, P.E., CSM  
FDOT District Planning and Environmental Administrator  
Florida Department of Transportation, District 6

DocuSigned by:  
  
061148481F8E45E...

Date: February 28, 2024



## **PUBLIC INVOLVEMENT PLAN**

### **Project Development and Environment (PD&E) Study**

The Atlantic Isle Bridge PD&E Study (Bridge No. 874218)

Atlantic Isle at West of SR A1A (Bridge No. 874218)

City of Sunny Isles Beach, Atlantic Isle from BMP 51+73 to EMP 61+45

Miami-Dade, Florida

The purpose of this Public Involvement Plan (PIP) is to assist in providing information to and obtaining input from concerned citizens, agencies, private groups (residential/business), and governmental entities. The overall goal of this plan is to help ensure that the study reflects the values and needs of the communities it is designed to benefit. A schedule of events and a list of documentation exhibiting compliance with these procedures are included.

This plan is in compliance with the Florida Department of Transportation's *Project Development and Environment (PD&E) Manual, Part 1, Chapter 11*. The environmental review, consultation, and other actions required by applicable federal environmental laws for this project are being, or have been, carried-out by FDOT pursuant to 23 U.S.C. § 327 and a Memorandum of Understanding dated December 14, 2016, and executed by FHWA and FDOT.

### **I. DESCRIPTION OF PROPOSED IMPROVEMENT**

Financial Management Number: 430029-2

Federal Aid Project Number: D620-010-B

Project Limits: The Atlantic Isle Lagoon Bridge is located in the City of Sunny Isle Beach, Miami-Dade County from Atlantic Isle west of SR A1A to Atlantic Avenue.

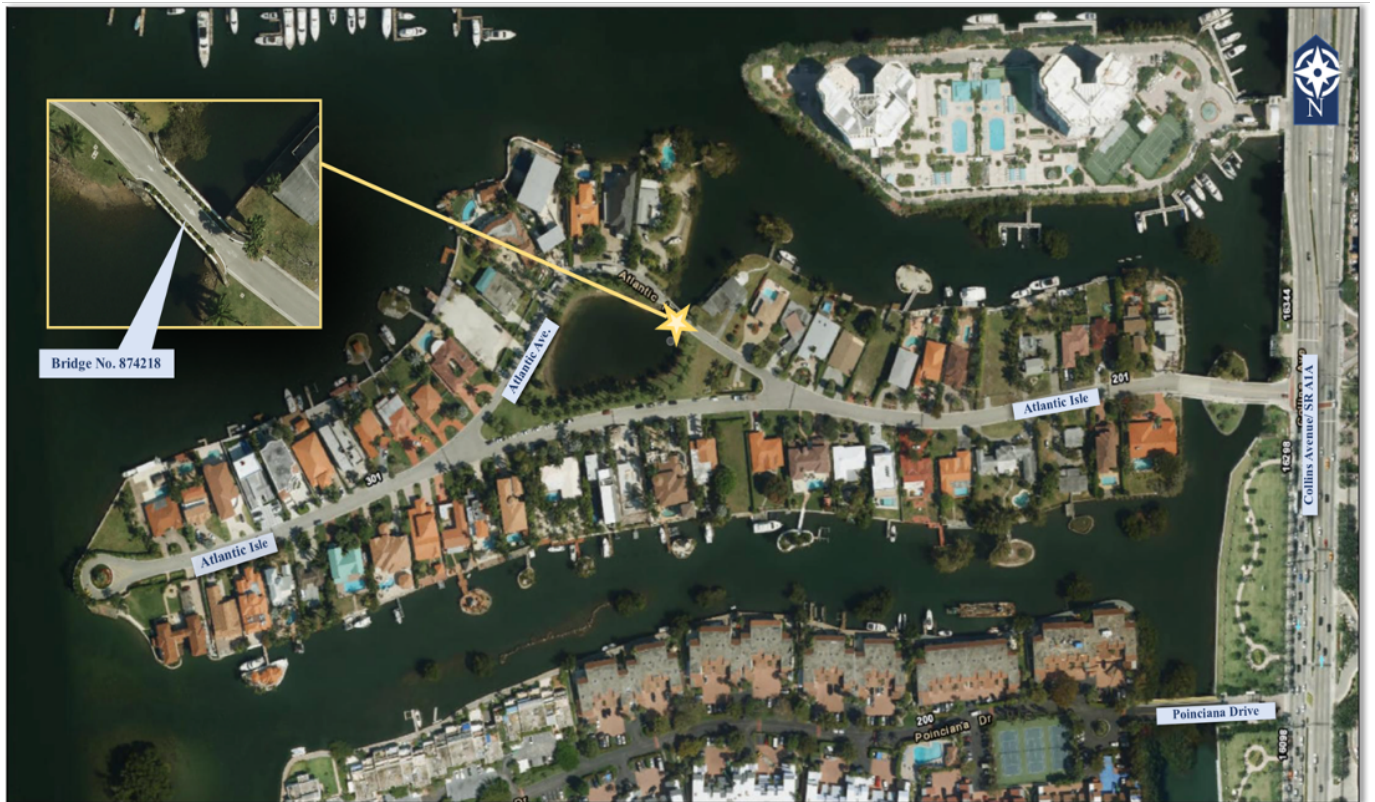
Proposed Activity: Address the structural and functional deficiencies of the existing bridge in or order to provide a safe and functional route for the surrounding community and traveling public. Potential alternatives to be evaluated in the Project Development and Environment (PD&E) Study include rehabilitation, replacement and no-build options, as well as potential conversion of the existing structure to a pedestrian bridge.

Class of Action: Type 2 CE



The limits of the project include Atlantic Isle and Atlantic Avenue which are located west of SR A1A. The Roadway ID for Atlantic Isles is 87674513. Atlantic Isles is a two-way urban local road that runs east west and Atlantic Avenue is a one-way urban local road which runs east and is where the Atlantic Isle Bridge is located. Both Atlantic Isle and Atlantic Avenue provide direct property access to adjacent residential properties, they carry no through traffic movement and have a speed limit of 30MPH. They are both functionally classified as Urban Arterial by Miami-Dade County Functional classification and Urban Boundary maps.

Figure 1 – Project Location Map



## Project Contact Information

For additional information regarding this project contact:

**Dat Huynh, P.E., CSM**  
FDOT District Planning  
and Environmental Administrator

**Address:** 1000 NW 111 Avenue  
Miami, Florida 33172

**Telephone:** 305-470-5201

**E-mail:** dat.huynh@dot.state.fl.us

**Victoria Vogt, M.S., FCCM**  
FDOT Project Manager

**Address:** 1000 NW 111 Avenue  
Miami, Florida 33172

**Telephone:** 305-470- 5420

**E-Mail:** Victoria.Vogt@dot.state.fl.us

## II. PROJECT BACKGROUND

This project involves the potential rehabilitation or replacement of the Atlantic Isle Bridge [Bridge Identification Number 874218] located within the City of Sunny Isles Beach in Miami-Dade County, Florida. The limits of the proposed project encompass the bridge and approaches for a distance of approximately 0.009 mile. The existing bridge is a one-way, low-level fixed (off-system) bridge that carries Atlantic Avenue over a narrow channel between Lake of the Isles and Biscayne Bay. The bridge includes one 10 feet travel lane for eastbound traffic and spans approximately 40 feet over the channel. The west and east approaches to the bridge are approximately 16 feet wide. The typical section of the bridge is approximately 20 feet wide with the 10-foot travel lane in the center of the bridge. The remaining 10 feet of the bridge consists of a planter easement, curb, and barrier wall on each side of the structure. Bicyclists and pedestrians must share the 10-foot travel lane with vehicles to cross the bridge. The posted speed limit in the vicinity of the bridge is 20 miles per hour. Potential alternatives to be evaluated in the Project Development and Environment (PD&E) Study include rehabilitation, replacement and no-build options, as well as potential conversion of the existing structure to a pedestrian bridge.

Per the Atlantic Isle Lagoon Bridge Proof of Concept Report, dated September 2016 the bridge is a low-level closed segmental spandrel filled cast-in-place reinforced concrete arch, with the facade of the arch covered in oolitic limestone (also known as coquina). Built in 1925, the bridge is historically significant due to the material composition of the facade and was designated as eligible for listing in the National Register of Historic Places by the State Historic Preservation Officer in 2013. See the project location map in **Figure 1-1**.

## III. PROJECT GOALS

The purpose of the project is to address the structural and functional deficiencies of the existing bridge in order to provide a safe and functional route for the surrounding community/traveling public.

According to a bridge inspection conducted on September 18, 2018, the Atlantic Isle Bridge [Bridge Identification Number 874218] has been determined to be 'Functionally Obsolete', with a Sufficiency Rating of 40.9 and a Health Index of 60.48. The Sufficiency Rating and Health Index values vary from 0 [worst] to 100 [best]. Existing functional deficiencies observed during the bridge inspection include substandard traffic barriers, multi-directional cracks in the asphalt overlay, and missing oolitic limestone (coral rock) on some areas of the north face of the arch. The southwest corner along the underside edge and the south side of the arch have spalls and delamination with exposed steel and areas of corrosion stains throughout the length of the arch along the fallen coral rock. In addition, the arch underside has a core hole at the center of the mid-span and exhibits delamination at random locations.

The bridge also has weight restrictions and limitations with an existing Bridge Load Posting Sign for single unit (SU) and Class 1 Trucks at 12 Tons and 21 Tons, respectively. The load posting on the bridge poses a significant issue for the residents of Atlantic Isle since garbage trucks, as well as trucks transporting concrete, building materials/demolition debris, and other urban goods, may not be within an adequate weight range to cross the bridge. As trucks are restricted to smaller loads when crossing the bridge and are forced to make several circuitous trips to transport freight, unnecessary truck traffic is being added to the surrounding roadway network. In some cases, fire trucks, emergency vehicles, delivery or moving vans, and construction vehicles also exceed the posted bridge load limit. Overweight vehicles accessing neighboring properties must complete a crossover requiring special procedures such as the use of flagmen in order to proceed. Given these conditions, the bridge does not meet the current transportation needs of the community.

#### **IV. IDENTIFICATION OF ELECTED OFFICIALS AND AGENCIES**

The following local, regional, state, or federal agencies having a concern in this project due to jurisdictional review or expressed interest have been identified and will be contacted directly by the Florida Department of Transportation (FDOT) through the Advance Notification (AN) process at the outset of the project in accordance with the PD&E Manual, Part 1, Chapter 3, Preliminary Environmental Discussion and Advance Notification. As other concerned public agencies are identified throughout the study, they also will be listed and contacted. A contact list has been developed including all entities listed below (provided in Appendix A), as well as a contact list for the Environmental Technical Advisory Team (ETAT) Members (provided in Appendix B).

**State:** Florida Department of State, Division of Historical Resources  
Florida Department of Agriculture and Consumer Services  
Florida Department of Environmental Protection  
Florida Department of Fish and Wildlife Conservation Commission  
Florida Department of Economic Opportunity

**Federal:**  
  
Federal Highway Administration  
Federal Transit Administration  
U.S. Army Corps of Engineers

U.S. Coast Guard  
U.S. Department of Interior - National Park Service  
U.S. Department of Interior - U.S. Fish and Wildlife Service  
U.S. Department of Commerce - National Marine Fisheries Service  
U.S. Environmental Protection Agency

**Regional/Local:** Miami-Dade Historic Preservation Program  
City of Sunny Isles Beach Public Works  
City of Sunny Isles Beach Transportation/Cultural & Community Svcs  
Department  
City of Sunny Isles Beach Public Safety  
City of Sunny Isles Beach Historic Preservation Board  
Aventura – Sunny Isles Beach Chamber of Commerce  
Atlantic Island Civic Association, Inc.

**Native American Tribes:**

Tribal Historic Preservation Office  
Miccosukee Tribe of Indians of Florida  
Seminole Nation of Oklahoma  
Poarch Band of Creek Indians  
Muscogee (Creek) Nation  
Tamiami Station  
Seminole Tribe of Florida

**Local Elected and Appointed Officials**

Federal Delegation:

- Marco Rubio U.S. Senator
- Rick Scott U.S. Senator
- Federica S. Wilson Senator, District 24

Florida State Senators for Local Districts:

- Jason W. B. Pizzo Senator, District 37

Florida State Representatives for Local Districts:

- Fabian Basabe Representative, District 106

Miami Dade County:

- Daniella Levine Cava Mayor
- Micky Steinberg Commissioner, District 4
- Juan Fernandez Barquin Clerk of the Circuit Court
- Eulois Cleckley Department of Transportation and Public Works (DTPW) Director
- Aileen Boucle Transportation Planning Organization (TPO) Executive Director



team will hold all public meetings at a location accessible by all.

The following local, state, and national public interest groups or organizations having a direct or expressed interest in the project study have been identified and will be contacted by the Florida Department of Transportation:

- Raul Rodriguez, Atlantic Island Civic Association, Inc.
- City of Sunny Isles Historic Preservation Board
- Miami-Dade Historic Preservation Board
- Florida State Historic Preservation Officer (SHPO) / Division of Historical Resources
- Dade Heritage Trust

## VI. OUTREACH ACTIVITIES

The following techniques are being used to notify the public of the proposed transportation improvement and to solicit public input into the project development process.

### **Newspaper(s):**

The Miami Herald

- Angela Dwyer: Adwyer@miamiherald.com
- Denise Martinez: Dmartinez@miamiherald.com

In addition to working with the media, a number of different notification techniques are being used throughout the project development process. A brief description of these techniques is provided below.

### **Letter/Newsletter(s):**

Invitational and informational letters and newsletters are being distributed to elected and appointed officials, property owners/tenants, business owners/operators, and interested parties as feasible. It is anticipated that 55-60 newsletters will be distributed for this study, as noted in the public outreach schedule. Notices will be delivered by hand and/or mail to residences and businesses located directly along the project corridor as deemed necessary by the FDOT.

### **News/Press Releases:**

News/press releases are being submitted to the FDOT seven days prior to each public meeting and the public hearing.

### **Online:**

Project notices are being published on social media platforms and website for FDOT and Sunny Isles:

<https://www.sibfl.net/>  
<https://www.facebook.com/MyFDOTMiami/>  
[https://www.instagram.com/myfdot\\_miami/](https://www.instagram.com/myfdot_miami/)  
[https://twitter.com/MyFDOT\\_Miami](https://twitter.com/MyFDOT_Miami)  
<http://www.fdotmiamidade.com/>



**Public Notices/Ads:** Public advertisement are being published in the area newspaper with the largest circulation twice prior to the public meeting/hearing, and once to announce Location and Design Concept Acceptance (LDCA) at the end of the study. Notice of public hearings are being placed on the agency website and in the Florida Administrative Register (FAR).

**Public Announcements:** In order to distribute PD&E phase information, fliers are being made available to organizations such as neighborhood/civic groups, the FDOT, and Miami-Dade County, to publish in existing newsletters and websites. Any such correspondence are being coordinated through the District's Public Information Office (PIO).

**Direct Mail List for Public Hearings:** The following are being contacted by direct mail in order to obtain input throughout the project development process and/or in order to provide project information:

- Those whose property lies, in whole or part, within at least 300 feet on either side of the centerline of each project alternative (Section 339.155, F.S.), as well as other local citizens who may be impacted by the construction of this project. This portion of the mailing list is based on the County Property Appraiser's tax rolls.
- Local elected and appointed public officials or individuals who request to be placed on the mailing list for this project.
- Public and private groups, organizations, agencies, or businesses that request to be placed on the mailing list for this project.

**Techniques:** As part of the Section 106 process, several Affected Parties Consultation meetings have occurred throughout this study. These meetings were held with local agencies, such as the City of Sunny Isles Beach, City of Sunny Isles Beach Historic Preservation Board, the Florida State Historic Preservation Officer, and other interested parties. These meetings were held to discuss potential project alternatives, adverse effects to the significant resources, and potential mitigation measures.

**Presentations to Local Officials:** Presentations will be given to local officials and agencies such as the City of Sunny Isles Beach prior to the Public Information Meeting(s) and the Public Hearing to apprise local officials of the project status, specific location, and design concepts, and to receive their comments.



## VII. COORDINATION WITH CITY OF SUNNY ISLES BEACH

Copies of aerial maps depicting all alignments and design concepts under consideration, along with draft copies of engineering and environmental study documentation, will be furnished to the City Engineers, with their review and written comments solicited. Updated information will also be forwarded to the City for review and comment prior to the scheduled public hearing.

## VIII. PUBLIC HEARING

In compliance with the Project Development and Environment (PD&E) Manual, 23 CFR 771, and Section 339.155, F.S., a public hearing will be held.

**Public Hearing Site:** The public hearing will be held at an appropriate facility convenient to the study area.

**Public Advertisement:** An advertisement will appear in the Miami Herald twice (at least 15 days and no more than 30 days) prior to the public hearing.

*The Miami Herald*

- [legals@miamiherald.com](mailto:legals@miamiherald.com)

All advertisements will be sent to local newspapers via e-mail or by registered mail, return receipt requested.

In addition, an announcement of the public hearing will be published in the Florida Administrative Register at least 7 days prior to the public hearing. See Section 11.2.5.4.4 for instructions regarding FAR Ad submittal.

**Letters of Invitation:** Letters will be mailed to all property owners at least 20 calendar days prior to the date of the meeting as required by Section 339.155, F.S., and at least 25 but no more than 30 calendar days prior to the public hearing date to local elected and appointed government officials notifying them of the upcoming public hearing. Notices may be hand-delivered to residences and businesses located directly along the project corridor as deemed necessary by the FDOT.

**Hearing Preparation:** Slide presentations and/or video presentations, project corridor aerial maps, graphics, and handouts will be prepared to supplement the oral public hearing presentation.

**Transcript:** A verbatim transcript of the public hearing will be compiled to include written comments received at the hearing and written comments received within the established comment period after the hearing. All public hearing documentation (handouts, presentation, graphics, etc.) will be included with the transcript. The

transcript will include a script of the recorded presentation, if applicable.

**Documents for Public Review:**

All draft documents to support PD&E studies evaluation will be available for public review at least 21 calendar days prior to the public hearing date.

**Locations of Documents for Public Review:**

Public notice will be provided in the public hearing advertisement and by mailed invitational letters as to where the study documents are located for public review. Suggested public review sites are:

- City of Sunny Isles Beach Government Center, 18070 Collins Ave, Sunny Isles Beach, FL 33160

**Title VI and Related Statutes:**

Information about the Title VI Program will be provided in the presentation, by handout, signage, and through availability of personnel, on the Title VI Program and the Relocation Assistance Program.

**Americans with Disabilities Act Compliance:**

Notification of the Department's intent to comply with the Americans with Disabilities Act will be provided in the public advertisements for the public hearing, in invitational letters to property owners/tenants and local officials, in handouts, and by selection of a public hearing site that meets ADA requirements.

**Responses:**

Responses to letters received as a result of the hearing and questions and comments not answered at the public hearing will be made in writing within 14 days following the hearing.

**IX. PUBLIC HEARING FOLLOW-UP**

The following procedures will occur after the public hearing.

**Recommendation Notice:**

A legal notice announcing the Office of Environmental Management's (OEM's) approval of the final document and recommendations will be published in The Miami Herald newspapers. In addition, press releases detailing the Department's recommendations will be provided to local media.

**Public Hearing Transcript Package:**

A Transcript Package will be produced and submitted following the public hearing. The Transcript Package will include a verbatim hearing transcript prepared by an approved court reporter, an errata sheet detailing any transcript discrepancies, a copy of correspondence received by the Department as part of the public hearing record, and affidavits of publication for newspaper ads advertising the hearing.

**Public Involvement  
Summary:**

A public involvement summary will be produced and submitted at the conclusion of the study, containing, at a minimum, documentation regarding public participation performed throughout the study period. This summary will include comments and responses received from the public, as well as Advance Notification, coordination with local officials and agencies, and public meetings; the verbatim transcript from the public hearing; proof of publication of ads; sign-in sheets; public hearing certification by the Project Manager (Moderator); and public comments.

**X. PUBLIC INVOLVEMENT DURING DESIGN**

To the extent public involvement activities are necessary in the Design phase, the Design Project Manager will be responsible for coordinating any such activities.

# Appendix A - Elected Officials - 2024

Title	Name	Letter Greeting	Envelope Greeting	Title 2	Municipality	Street Address	City	State	ZIP	Phone	Email	Website
The Honorable	Federica S. Wilson	Congresswoman Wilson	The Honorable Federica S. Wilson	Congresswoman, District 24	United States House of Representatives, Congresswoman	1700 Convention Center Drive First Floor Suite	Miami Beach	FL	33139	305-673-2000	fwilson@mail.house.gov	<a href="https://www.house.gov/wilson">https://www.house.gov/wilson</a>
The Honorable	James W. B. Ryan	Congressman Ryan	The Honorable James W. B. Ryan	Senator	Florida State Senate, District 33	1575 Sheridan Street Suite 211	Westchester	FL	33092	352-488-5048	senator.james.ryan@flsenate.gov	<a href="https://www.jamesryan.com">https://www.jamesryan.com</a>
The Honorable	John Boudie	Representative Boudie	The Honorable John Boudie	Representative	Florida House of Representatives, District 106	North Sea Village	Miami	FL	33141	305-593-1511	john.boudie@flhouse.gov	<a href="https://www.johnboudie.com">https://www.johnboudie.com</a>
The Honorable	Rick Scott	Senator Scott	The Honorable Rick Scott	Senator	United States Senate	905 Ponce de Leon Boulevard, Suite 505	Miami	FL	33134	305-561-7241, 202-224-5274	rick@rickscott.senate.gov	<a href="https://www.rickscott.senate.gov/">https://www.rickscott.senate.gov/</a>
The Honorable	Marco Rubio	Senator Rubio	The Honorable Marco Rubio	Senator	United States Senate	1700 SW 87th Avenue, Suite 770	Miami	FL	33128	305-536-4224	marco.rubio@flsenate.gov	<a href="https://www.marcorubio.com/">https://www.marcorubio.com/</a>
The Honorable	Dannika Levine-Cox	Mayor Levine-Cox	The Honorable Dannika Levine-Cox	Mayor	Miami-Dade County	211 NW 1 Street Suite 29th Floor	Miami	FL	33128	305-375-5071	mayor@miamidade.gov	<a href="http://www.miamidade.gov/mayor/">http://www.miamidade.gov/mayor/</a>
The Honorable	Willy Sotomayor	Commissioner Sotomayor	The Honorable Willy Sotomayor	Commissioner, District 8	Miami-Dade County	110 SW 1 Street, Suite 200	Miami	FL	33128	305-375-5238	director@miamidade.gov	<a href="http://www.miamidade.gov/">http://www.miamidade.gov/</a>
The Honorable	Isabel Fernandez-Barquero	Ms. Barquero	The Honorable Isabel Fernandez-Barquero	Chief of the County Court	Miami-Dade County	11 W Flagler St	Miami	FL	33130	305-548-7331	isabeloff@miamidade.gov	<a href="https://www.miamidade.gov/court/">https://www.miamidade.gov/court/</a>
Mr.	Steven Czekay	Mr. Czekay	Mr. Steven Czekay	Director and CEO for the Department of Transportation and Public Works	Miami-Dade County	701 NW 1st Court Suite 3 100	Miami	FL	33136	305-469-5875	steven.czekay@miamidade.gov	<a href="https://www.miamidade.gov/transportation/contact-traveler-page">https://www.miamidade.gov/transportation/contact-traveler-page</a>
Ms.	Aileen Bourde, ACP	Ms. Bourde	Ms. Aileen Bourde, ACP	Executive Director for the Miami-Dade Transportation Planning Organization (TPO)	Miami-Dade County	150 West Flagler Street, Suite 1900	Miami	FL	33130	305-375-4507	aileen.bourde@mtpo.org, aileen_salin@mtpo.org	<a href="http://www.miamidade.gov/contact-us.asp">http://www.miamidade.gov/contact-us.asp</a>
Mr.	Zainab Salim	Ms. Salim	Ms. Zainab Salim	Executive Director - Administration for the Miami-Dade Transportation Planning Organization (TPO)	Miami-Dade County	150 West Flagler Street, Suite 1900	Miami	FL	33130	305-375-4507	zainab.salim@mtpo.org	<a href="https://www.miamidade.gov/contact-us.asp">https://www.miamidade.gov/contact-us.asp</a>
Ms.	Maria Teresita Michels-Landa, P.E.	Ms. Michels-Landa	Ms. Maria Teresita Michels-Landa	Executive Director - Transportation for the Miami-Dade Transportation Planning Organization (TPO)	Miami-Dade County	150 West Flagler Street, Suite 1900	Miami	FL	33130	305-375-4507	maria.vichels@mtpo.org	<a href="https://www.miamidade.gov/contact-us.asp">https://www.miamidade.gov/contact-us.asp</a>
Mr.	Stephanie V. Daniels	Ms. Daniels	Ms. Stephanie V. Daniels	Director of Miami-Dade Police Department	Miami-Dade County	6105 NW 21 Street	Doral	FL	33172	305-471-3338	sdaniels@misd.com	<a href="https://www.miamidade.gov/office-of-the-police/contact-police-page">https://www.miamidade.gov/office-of-the-police/contact-police-page</a>
Mr.	Walter "Ray" Landrum	Chief Landrum	Chief Ray "Ray" Landrum	Fire Chief	Miami-Dade County	9100 NW 41 Street	Doral	FL	33174	305-331-5000	wlandrum@miamidade.gov	<a href="https://www.miamidade.gov/office-of-the-police/contact-police-page">https://www.miamidade.gov/office-of-the-police/contact-police-page</a>
Ms.	Maria Tere Rojas	Ms. Rojas	Ms. Maria Tere Rojas	Chief, District 6	Miami-Dade County Public Schools	2142 NE 2 Avenue, Suite 200	Miami	FL	33112	305-995-1334	maria.t.rojas@schools.net	<a href="https://www.miamidade.gov/schools/contact-us">https://www.miamidade.gov/schools/contact-us</a>
Ms.	Lucia "Dolores"	Dr. Dolores	Dr. Dolores	Superintendent of Schools	Miami-Dade County Public Schools	2142 NE 2 Avenue, Suite 212	Miami	FL	33112	305-995-1400	ldolores@schools.net	<a href="https://www.miamidade.gov/schools/contact-us">https://www.miamidade.gov/schools/contact-us</a>
Ms.	Lucia Baez-Geller	Ms. Baez-Geller	Ms. Lucia Baez-Geller	Board Member, District 3	Miami-Dade County Public Schools	2142 NE 2 Avenue, Suite 203	Miami	FL	33112	305-995-1309	lucia.baez.geller@schools.net, district3@schools.net	<a href="https://www.miamidade.gov/schools/contact-us">https://www.miamidade.gov/schools/contact-us</a>
The Honorable	Erica Sneider	Mayor Sneider	The Honorable Erica Sneider	Mayor	City of Sunny Isles Beach	18070 Collins Avenue	Sunny Isles Beach	FL	33160	305-792-2733	mayor@isb.net	<a href="https://www.isb.net/">https://www.isb.net/</a>
The Honorable	Erica Lanza	Erica Mayor / Commissioner Lanza	The Honorable Erica Lanza	Erica Mayor / Commissioner Seat 2	City of Sunny Isles Beach	18070 Collins Avenue	Sunny Isles Beach	FL	33160	305-792-3752	erica@isb.net	<a href="https://www.isb.net/">https://www.isb.net/</a>
The Honorable	Jeffy Joseph	Commissioner Joseph	The Honorable Jeffy Joseph	Commissioner, Seat 1	City of Sunny Isles Beach	18070 Collins Avenue	Sunny Isles Beach	FL	33160	305-792-1764	jeffj@isb.net	<a href="https://www.isb.net/">https://www.isb.net/</a>
The Honorable	Donna Victoria	Commissioner Victoria	The Honorable Donna Victoria	Commissioner, Seat 4	City of Sunny Isles Beach	18070 Collins Avenue	Sunny Isles Beach	FL	33160	305-792-1765	donnav@isb.net	<a href="https://www.isb.net/">https://www.isb.net/</a>
The Honorable	Fabrizia Stoyevant	Commissioner Stoyevant	The Honorable Fabrizia Stoyevant	Commissioner, Seat 3	City of Sunny Isles Beach	18070 Collins Avenue	Sunny Isles Beach	FL	33160	305-792-1761	fabriz@isb.net	<a href="https://www.isb.net/">https://www.isb.net/</a>
Mr.	Sean Morris	Mr. Sean Morris	Mr. Sean Morris	City Manager	City of Sunny Isles Beach	18070 Collins Avenue	Sunny Isles Beach	FL	33160	305-792-2734	seanm@isb.net	<a href="https://www.isb.net/">https://www.isb.net/</a>
Mr.	Fabrizio Vajpe	Mr. Vajpe	Mr. Fabrizio Vajpe	Public Works Superintendent	City of Sunny Isles Beach	18070 Collins Avenue	Sunny Isles Beach	FL	33160	305-792-1800	vajpe@isb.net	<a href="http://www.isb.net/">http://www.isb.net/</a>
Mr.	Edward Santiago	Chief Santiago	Chief Edward Santiago	Chief of Police	City of Sunny Isles Beach	18070 Collins Avenue, 2nd Floor	Sunny Isles Beach	FL	33160	305-941-4440	esantiago@isb.net	<a href="https://www.isb.net/">https://www.isb.net/</a>
Mr.	Mauricio Balcarac	Mr. Balcarac	Mr. Mauricio Balcarac	City Clerk	City of Sunny Isles Beach	18070 Collins Avenue	Sunny Isles Beach	FL	33160	305-792-1783	mbalcarac@isb.net, mbalcarac@isb.net	<a href="https://www.isb.net/">https://www.isb.net/</a>
Mr.	Richard Landrum	Mr. Landrum	Mr. Richard Landrum	City Engineer	City of Sunny Isles Beach	18070 Collins Avenue	Sunny Isles Beach	FL	33160	305-792-1807	rlandrum@isb.net	<a href="https://www.isb.net/">https://www.isb.net/</a>

# Appendix A - Elected Officials - ORIGINAL

Title	Name	Letter Greeting	Envelope Greeting	Title 2	Municipality	Street Address	City	State	ZIP	Phone	Email	Website
The Honorable	Debbie Wasserman Schultz	Congresswoman	Debbie Wasserman Schultz	The Honorable Debbie Wasserman Schultz	Aventura Office	19200 West Country Club Dr	Aventura	FL	33180	305-936-5724	debbie@OWBforCongress.com	<a href="https://www.wassermanschultz.house.gov/">https://www.wassermanschultz.house.gov/</a>
The Honorable	Jason W. Pritz	Senator	Jason Pritz	The Honorable Jason Pritz	Florida State Senate, District 38	3552 N.E. 4th Court, Suite 76	Miami	FL	33137	305-795-1205	jason.pritz@flsenate.gov	<a href="https://www.floridapublicaccess.com/38">https://www.floridapublicaccess.com/38</a>
The Honorable	Joseph S. Gallear	Representative	The Honorable Joseph S. Gallear	Representative	Florida House of Representatives, District 100	100 West Dania Beach Boulevard	Dania Beach	FL	33428	854-924-3708	gallear.joe@flhouse.gov	<a href="https://www.myfloridahouse.gov/Sections/Representatives/detail.aspx?MemberID=6146&amp;LegislativeTerm=2023">https://www.myfloridahouse.gov/Sections/Representatives/detail.aspx?MemberID=6146&amp;LegislativeTerm=2023</a>
The Honorable	Neil Scott	Senator	The Honorable Neil Scott	Senator	United States Senate	710 West Samia Avenue Building	Weston	FL	33331	305-226-0274	neils@scott.senate.gov	<a href="https://www.scott.senate.gov/">https://www.scott.senate.gov/</a>
The Honorable	Marcio Rubio	Senator	The Honorable Marcio Rubio	Senator	United States Senate	7400 SW 87th Avenue, Suite 270	Miami	FL	33173	305-696-0274	marcio.rubio@senate.gov	<a href="https://www.senate.gov/roster/contact_information/senators_cfm.cfm?Senator=">https://www.senate.gov/roster/contact_information/senators_cfm.cfm?Senator="</a>
The Honorable	Carlos A. Gimenez	Mayor	The Honorable Carlos A. Gimenez	Mayor	Miami Dade County	111 NW 1 Street Suite 2910	Miami	FL	33128	305-375-2531	mayor@miamidade.gov	<a href="http://www.miamidade.gov">www.miamidade.gov</a>
The Honorable	Joseph Moon	Deputy Mayor	The Honorable Joseph Moon	Deputy Mayor	Miami Dade County	111 NW 1 Street Suite 2910	Miami	FL	33128	305-375-5071	joemoo@miamicounty.gov	<a href="http://www.miamidade.gov">www.miamidade.gov</a>
The Honorable	Sally A. Heyman	Commissioner	The Honorable Sally A. Heyman	Commissioner	Miami Dade County	111 NW 1 Street, Suite 2 20	Miami	FL	33128	305-374-6179	district4@miamidade.gov	<a href="http://www.miamidade.gov">www.miamidade.gov</a>
The Honorable	Harvey Rubin	Mr. Rubin	The Honorable Harvey Rubin	Clerk of the County Court	Miami Dade County	73 W Flagler St	Miami	FL	33130	305-348-7333	clerk@miami-dadeclerk.com	<a href="http://www.miami-dadeclerk.com">www.miami-dadeclerk.com</a>
The Honorable	Alvin Bouche	Mr. Bouche	The Honorable Alvin Bouche	Director of Department of Transportation and Public Works	Miami Dade County	703 NW 1 Court, Suite 2910	Miami	FL	33128	786-468-5307	alvin.bouche@miamidade.gov	<a href="https://www.miamidade.gov/global/government/1/graphics/krans1_page">https://www.miamidade.gov/global/government/1/graphics/krans1_page</a>
Ms.	Alvin Bouche, ACP	Mr. Bouche	The Honorable Alvin Bouche	Executive Director of the Miami Dade Transportation Planning Organization (TPO)	Miami Dade TPO	111 NW 1 Street, Suite 820	Miami	FL	33128	305-374-4507	alvin.bouche@mdtpo.org / information@mdtpo.org	<a href="http://www.miamidadetpo.org/contact-us.asp">http://www.miamidadetpo.org/contact-us.asp</a>
Mr.	Alfredo Ramirez III	Mr. Ramirez	The Honorable Alfredo Ramirez III	Director of Miami Dade Police Department	Miami Dade County	9105 NW 23 Street, Room 3072	Doral	FL	33172	305-471-4272	aramirez@mdpd.com	<a href="http://www.miamidade.gov">www.miamidade.gov</a>
Mr.	Ryan K. Coninsky	Mr. Coninsky	The Honorable Ryan K. Coninsky	Assistant Fire Chief	Miami Dade County	9300 NW 41 Street, Room 218	Doral	FL	33178	786-311-5118	rconin@miamicity.gov	<a href="http://www.miamidade.gov">www.miamidade.gov</a>
Mr.	Greg Rubin	Mr. Rubin	The Honorable Greg Rubin	Assistant Fire Chief	Miami Dade County	9300 NW 41 Street	Doral	FL	33178	786-311-5000	gregory.rubin@miamidade.gov	<a href="http://www.miamidade.gov">www.miamidade.gov</a>
Ms.	Paula T. Hartman	Ms. Hartman	The Honorable Paula T. Hartman	Chairperson, The Board of Miami Dade County Public Schools	Miami Dade County Public Schools	1400 NW 2 Avenue, Suite 700	Miami	FL	305-993-1134	phartman@dadeschools.net	phartman@dadeschools.net	<a href="http://www.miamidade.gov">www.miamidade.gov</a>
Mr.	Alberto Carvalho	Mr. Carvalho	The Honorable Alberto Carvalho	Superintendent of Schools	Miami Dade County Public Schools	111 NW 1 Street, Suite 320	Miami	FL	305-993-2940	acarvalho@dadeschools.net / csg@dadeschools.net	dadeschools.net	<a href="http://www.miamidade.gov">www.miamidade.gov</a>
Mr.	Marcia Kaga	Ms. Kaga	The Honorable Marcia Kaga	Board Member, District 3	Miami Dade County Public Schools	1400 NW 2 Avenue, Suite 700	Miami	FL	305-993-1130/1372	mkaga@dadeschools.net	mkaga@dadeschools.net	<a href="http://www.miamidade.gov">www.miamidade.gov</a>
The Honorable	George "Bud" Scholt	Mayor	The Honorable George "Bud" Scholt	Mayor	City of Sunny Isles Beach	18070 Collins Avenue	Sunny Isles Beach	FL	33160	305-793-1700	bud@ci.sfbf.net	<a href="http://www.ci.sfbf.net/">http://www.ci.sfbf.net/</a>
The Honorable	Larisa Svechin	Vice Mayor	The Honorable Larisa Svechin	Vice Mayor	City of Sunny Isles Beach	18070 Collins Avenue	Sunny Isles Beach	FL	305-793-1700	lsvechin@ci.sfbf.net	<a href="http://www.ci.sfbf.net/">http://www.ci.sfbf.net/</a>	
The Honorable	Mira Lama	Commissioner	The Honorable Mira Lama	Commissioner	City of Sunny Isles Beach	18070 Collins Avenue	Sunny Isles Beach	FL	33160	305-793-1700	miralama@ci.sfbf.net	<a href="http://www.ci.sfbf.net/">http://www.ci.sfbf.net/</a>
The Honorable	Dana Goldman	Commissioner	The Honorable Dana Goldman	Commissioner	City of Sunny Isles Beach	18070 Collins Avenue	Sunny Isles Beach	FL	305-793-1700	dgoldman@ci.sfbf.net	<a href="http://www.ci.sfbf.net/">http://www.ci.sfbf.net/</a>	
The Honorable	Jennifer Viscarra	Commissioner	The Honorable Jennifer Viscarra	Commissioner	City of Sunny Isles Beach	18070 Collins Avenue	Sunny Isles Beach	FL	305-793-1700	jviscara@ci.sfbf.net	<a href="http://www.ci.sfbf.net/">http://www.ci.sfbf.net/</a>	
Mr.	Christopher J. Russo	Mr. Russo	The Honorable Christopher J. Russo	City Manager	City of Sunny Isles Beach	18070 Collins Avenue	Sunny Isles Beach	FL	305-793-1701	crusso@ci.sfbf.net	<a href="http://www.ci.sfbf.net/">http://www.ci.sfbf.net/</a>	
Mr.	Stan Morris	Mr. Morris	The Honorable Stan Morris	Deputy City Manager	City of Sunny Isles Beach	18070 Collins Avenue	Sunny Isles Beach	FL	305-793-1807	smorris@ci.sfbf.net	<a href="http://www.ci.sfbf.net/">http://www.ci.sfbf.net/</a>	
Ms.	Susan Strippner	Ms. Strippner	The Honorable Susan Strippner	Assistant City Manager	City of Sunny Isles Beach	14115 North Bay Road	Sunny Isles Beach	FL	305-793-1800	sstripp@ci.sfbf.net	<a href="http://www.ci.sfbf.net/">http://www.ci.sfbf.net/</a>	
Mr.	Doug Sandler	Mr. Sandler	The Honorable Doug Sandler	Chief of Police	City of Sunny Isles Beach	18070 Collins Avenue	Sunny Isles Beach	FL	305-914-4440	dsandler@ci.sfbf.net	<a href="http://www.ci.sfbf.net/">http://www.ci.sfbf.net/</a>	

## Affected Parties Consultation

Contact Name	Agency	Position	Appointed By/Two-Year Term: 1/20 to 12/21	Street Address	City	State	Zip	Phone number	Email
Warren J. Stamm	City of Sunny Isles Beach Historic Preservation Board	Chairperson	Mayor Goldman	16001 Collins Avenue #3204	Sunny Isles Bea	FL	33160	(904) 868-1635	<a href="mailto:wislegal@aol.com">wislegal@aol.com</a>
Raul Rodriguez	Atlantic Isles HOA	President						(303) 778-4023	<a href="mailto:rrodriguez@adventuminvestments.com">rrodriguez@adventuminvestments.com</a>
Claudia Hasbun	City of Sunny Isles Beach Historic Preservation Board	Staff Liaison/ Director, Planning & Zoning	Planning and Zoning/Historical Preservation Board	18070 Collins Avenue	Sunny Isles Bea	FL	33160	(305) 792-1757	<a href="mailto:chasbun@sibfl.net">chasbun@sibfl.net</a>
Richard Labinsky	City of Sunny Isles Beach Historic Preservation Board	Public Works							<a href="mailto:rlabinsky@sibfl.net">rlabinsky@sibfl.net</a>
Susan Simpson	City of Sunny Isles Beach Historic Preservation Board	Assistant City Manager	City Manager's Office	18070 Collins Avenue	Sunny Isles Bea	FL	33160	(305) 792-1800	<a href="mailto:ssimpson@sibfl.net">ssimpson@sibfl.net</a>
Robin Chicly	City of Sunny Isles Beach Historic Preservation Board	Member	Commissioner Stuyvesant	19380 Collins Avenue	Sunny Isles Bea	FL	33160	(786) 436-1171	<a href="mailto:rc438@cornell.edu">rc438@cornell.edu</a>
Norman Edelcup	City of Sunny Isles Beach Historic Preservation Board	Member	At-Large	244 Atlantic Isle	Sunny Isles Bea	FL	33160	(786) 202-1119	<a href="mailto:nedelcup@aol.com">nedelcup@aol.com</a>
Ivette Francola	City of Sunny Isles Beach Historic Preservation Board	Member	Vice Mayor Viscarra	305 Poinciana Island Drive	Sunny Isles Bea	FL	33160	(305) 945-9784	<a href="mailto:ifrancolla@yahoo.com">ifrancolla@yahoo.com</a>
Joel Levine	City of Sunny Isles Beach Historic Preservation Board	Member	Commissioner Lama	16445 Collins Avenue, Unit 524	Sunny Isles Bea	FL	33160	(516) 381-5618	<a href="mailto:wb2bmh@atlanticbb.net">wb2bmh@atlanticbb.net</a>
Elizabeth Morales	City of Sunny Isles Beach Historic Preservation Board	Member	Commission Joseph	19380 Collins Avenue	Sunny Isles Bea	FL	33160	(305) 733-5915	<a href="mailto:liza.morales@alliedsolutions.net">liza.morales@alliedsolutions.net</a>
Mark Snyder	City of Sunny Isles Beach Historic Preservation Board	Member	At-Large	16425 Collins Avenue, Unit 2912	Sunny Isles Bea	FL	33160	(786) 593-2471	<a href="mailto:doraceus@aol.com">doraceus@aol.com</a>
Jennifer Marshall	FDOT Office of Environmental Management	Director, Office of Environmental Management		605 Suwannee Street	Tallahasee	FL	32399	(850) 414-4316	<a href="mailto:jennifer.marshall@dot.state.fl.us">jennifer.marshall@dot.state.fl.us</a>
Matt Marino, M.A., RPA	FDOT Office of Environmental Management	Office Principal Chronicle Heritage						(954) 336-3625	<a href="mailto:Matthew.Marino@dot.state.fl.us">Matthew.Marino@dot.state.fl.us</a>
Lindsay S Rothrock	FDOT Office of Environmental Management	Cultural and Historic Resource Specialist		605 Suwannee Street	Tallahasee	FL	32399	(850) 414-5269	<a href="mailto:lindsay.rothrock@dot.state.fl.us">lindsay.rothrock@dot.state.fl.us</a>
Kelly Chase	Florida State Historic Preservation Officer (SHPO) / Division of Historical Resources	Compliance and Review Supervisor		500 South Bronough Street 4th Floor	Tallahasee	FL	32399	(850) 245-6344	<a href="mailto:Kelly.Chase@dos.myflorida.com">Kelly.Chase@dos.myflorida.com</a>
Alyssa McManus	Florida State Historic Preservation Officer (SHPO) / Division of Historical Resources	Architectural Historian		500 South Bronough Street 4th Floor	Tallahasee	FL	32399	(850) 245-6368	<a href="mailto:alyssa.mcmanus@dos.myflorida.com">alyssa.mcmanus@dos.myflorida.com</a>
Marsha Welch	Florida State Historic Preservation Officer (SHPO) / Division of Historical Resources	Historic Preservationist		500 South Bronough Street 4th Floor	Tallahasee	FL	32399	(850) 245-6315	<a href="mailto:Marsha.Welch@DOS.MyFlorida.Com">Marsha.Welch@DOS.MyFlorida.Com</a>
Andrew A Kizlauskas	U.S. Army Corps of Engineers	Chief Panama City Permitting Section		415 Richard Jackson Boulevard Suite 411	Panama City	FL	32407	(904) 304-9095	<a href="mailto:andrew.a.kizlauskas@usace.army.mil">andrew.a.kizlauskas@usace.army.mil</a>
Michelle Gilbert	U.S. Army Corps of Engineers			415 Richard Jackson Boulevard Suite 411	Panama City	FL	32407	(904) 304-9095	<a href="mailto:michelle.l.gilbert@usace.army.mil">michelle.l.gilbert@usace.army.mil</a>
Sara Cody	Miami-Dade County Historic Preservation Board	Chief		111 NW 1st Street 12th Floor	Miami	FL	33128	(305) 375-4438	<a href="mailto:scody@miamidade.gov">scody@miamidade.gov</a>
Christine Rupp	Dade Heritage Trust	Executive Director		<a href="#">190 Southeast 12 Terra</a>	Miami	FL	33131	(305) 358-9572	<a href="mailto:chris@dadeheritagetrust.org">chris@dadeheritagetrust.org</a>



# Appendix A - Stakeholders - 2024

	Envelope Label Name - Address 1	Letter Greeting Name	Title - Address 2	Municipality/Company	Street Address	City	State	ZIP	Phone	Email	
			Manager	Oceania VA Condominium Association	16500 Collins Avenue	Sunny Isles Beach	FL	33160	305-944-7700	manager@oceania5.net; adominguez@kwpmc.com	
	Edgar Sanchez, LCAM	Mr. Sanchez	Manager	Oceania Property Owner Association	16421 Collins Avenue	Sunny Isles Beach	FL	33160	786-907-5100	ESanchez@KWPMC.com	
	Les Winston	Mr. Winston	Director/President/Chairman	Aventura Sunny Isles Beach Chamber of Commerce	11975 West Dixie Highway	North Miami	FL	33161	855-287-8696	aventur@sunnyislesbeachchamber@gmail.com	
	Roberta Rousseau	Ms. Rousseau	Director/Treasurer	Aventura Sunny Isles Beach Chamber of Commerce	11975 West Dixie Highway	North Miami	FL	33161	855-287-8696	aventur@sunnyislesbeachchamber@gmail.com	
	Dr. Katherine Murphy	Dr. Murphy	Director	Aventura Sunny Isles Beach Chamber of Commerce	11975 West Dixie Highway	North Miami	FL	33161	855-287-8696	aventur@sunnyislesbeachchamber@gmail.com	
HOA / CHAMBER / CITY/COUNTY AIDES	Jean Marc Rousseau	Mr. Rousseau	Director	Aventura Sunny Isles Beach Chamber of Commerce	11975 West Dixie Highway	North Miami	FL	33161	855-287-8696	aventur@sunnyislesbeachchamber@gmail.com	
	Jeff Perlow	Mr. Perlow	Director	Aventura Sunny Isles Beach Chamber of Commerce	11975 West Dixie Highway	North Miami	FL	33161	855-287-8696	aventur@sunnyislesbeachchamber@gmail.com	
	Johanna Cervone	Ms. Cervone	Chief of Staff to the Mayor	Miami-Dade County	111 NW 1 Street Suite 2910	Miami	FL	33128	305-375-5071	johanna.cervone@miamidade.gov	
	Manny Orzoco	Mr. Orzoco	Digital Director and Special Aide to the Mayor	Miami-Dade County	111 NW 1 Street Suite 2910	Miami	FL	33128	305-375-5071	manny.orzoco@miamidade.gov	
	Bonnie Michaels	Mr. Michaels	Chief of Staff, District 4	Miami-Dade County	111 NW 1 Street, Suite 220	Miami	FL	33128	305-375-5128/ 305-787-5999	bonnie.michaels@miamidade.gov	
	Danielle Mejia	Ms. Mejia	Commission Aide & Legislative Aide, District 4	Miami-Dade County	111 NW 1 Street, Suite 220	Miami	FL	33128	305-375-5128/305-787-5999	danielle.mejia@miamidade.gov	
	Sylvia Flores	Ms. Flores	Cultural & Community Services Director	City of Sunny Isles	18070 Collins Avenue	Sunny Isles Beach	FL	33160	305-792-1863	sflores@sibfl.net	
	Javier A. Betancourt	Mr. Betancourt	Executive Director, Office of the Citizens' Independent Transportation Trust (CITT)	Office of the Citizens' Independent Transportation Trust (CITT)	111 NW 1st Street, Suite 1010	Miami	FL	33128	305-375-1357	Javier.Betancourt@miamidade.gov	
	Businesses			Manager/Owner	Oceania Club & Spa	16421 Collins Avenue	Sunny Isles Beach	FL	33160	305-956-5738	info@oceaniatowers.com
			Manager/Owner	Turnberry Ocean Colony	16049 Collins Avenue	Sunny Isles Beach	FL	33160	305-647-2696		
			Manager/Owner	Spain Condominiums	16275 Collins Avenue	Sunny Isles Beach	FL	33160	854-953-3543		
			Manager/Owner	Rose Café	16690 Collins Avenue, Suite 102	Sunny Isles Beach	FL	33160	786-991-9922	rose.cafemia@gmail.com	

# Appendix A - Stakeholders - Original

Envelope Label Name - Address 1	Letter Greeting Name	Title - Address 2	Municipality/Company	Street Address	City	State	ZIP	Phone	Email
Alon Steiger	Mr. Steiger	President	HOA Atlantic Isles	323 Sunny Isles Blvd	Sunny Isles Beach	FL	33160	786-228-8329	
Winston	Mr. Winston	Director/President/Chairman	Aventura Sunny Isles Beach Chamber of Commerce	20533 Biscayne Blvd, Suite 536	Aventura	FL	33180	305-935-2131	<a href="mailto:ed@horowitzadvisors.com">ed@horowitzadvisors.com</a>
Roberta Rousseau	Ms. Rousseau	Director/Treasurer	Aventura Sunny Isles Beach Chamber of Commerce	20533 Biscayne Blvd, Suite 536	Aventura	FL	33180	305-935-2131	<a href="mailto:aventurasunnyislesbeachchamber@gmail.com">aventurasunnyislesbeachchamber@gmail.com</a>
Dr. Katherine Murphy	Dr. Murphy	Director	Aventura Sunny Isles Beach Chamber of Commerce	20533 Biscayne Blvd, Suite 536	Aventura	FL	33180	305-935-2131	<a href="mailto:aventurasunnyislesbeachchamber@gmail.com">aventurasunnyislesbeachchamber@gmail.com</a>
Jean Marc Rousseau	Mr. Rousseau	Director	Aventura Sunny Isles Beach Chamber of Commerce	20533 Biscayne Blvd, Suite 536	Aventura	FL	33180	305-935-2131	<a href="mailto:aventurasunnyislesbeachchamber@gmail.com">aventurasunnyislesbeachchamber@gmail.com</a>
Jeff Perlow	Mr. Perlow	Director	Aventura Sunny Isles Beach Chamber of Commerce	20533 Biscayne Blvd, Suite 536	Aventura	FL	33180	305-935-2131	<a href="mailto:aventurasunnyislesbeachchamber@gmail.com">aventurasunnyislesbeachchamber@gmail.com</a>
Alex Ferro	Mr. Ferro	Chief of Staff to Mayor Carlos A. Gimenez	Miami-Dade County	111 NW 1 Street, Suite 2910	Miami	FL	33128	305-375-5128/305-787-5999	<a href="mailto:alex.ferro@miamidade.gov">alex.ferro@miamidade.gov</a>
Bonnie Michaels	Mr. Michaels	Chief of Staff, District 4 to	Miami-Dade County	111 NW 1 Street, Suite 220	Miami	FL	33128	305-375-5128/305-787-5999	<a href="mailto:bonnie.michaels@miamidade.gov">bonnie.michaels@miamidade.gov</a>
Danielle Mejia	Ms. Mejia	Commission Aide & Legislative Aide, District 4	Miami-Dade County	111 NW 1 Street, Suite 220	Miami	FL	33128	305-375-5128/305-787-5999	<a href="mailto:danielle.mejia@miamidade.gov">danielle.mejia@miamidade.gov</a>
Norelli Liguori	Ms. Liguori	Community Services Manager	City of Sunny Isles	18115 N Bay Road	Sunny Isles Beach	FL	33160	305-792-1928	<a href="mailto:nliguori@sibfl.net">nliguori@sibfl.net</a>
Maria Teresita Vilches-Landa	Ms. Vilches-Landa	Assistant Director of Mobility Management and Implementation	Miami-Dade County TPO	111 NW 1 Street, Suite 920	Miami	FL	33128	305-375-2069	<a href="mailto:Maria.Vilches@miamidade.gov">Maria.Vilches@miamidade.gov</a>
Wilson Fernandez	Mr. Fernandez	Deputy Director of Transportation & Mobility	Miami-Dade County TPO	111 NW 1 Street, Suite 920	Miami	FL	33128	305-375-4507	<a href="mailto:wilson.fernandez@mdtpo.org">wilson.fernandez@mdtpo.org</a>
Javier A. Betancourt	Mr. Betancourt	Executive Director, Office of the Citizens' Independent Transportation Trust	Office of the Citizens' Independent Transportation Trust (CITT)	111 NW 1st Street, Suite 1010	Miami	FL	33128	305-375-1357	<a href="mailto:javier_betancourt@miamidade.gov">javier_betancourt@miamidade.gov</a>
Fabrizio Volpi	Mr. Volpi	Public Works Superintendent	City of Sunny Isles Beach	18070 Collins Avenue	Sunny Isles Beach	FL	33160	305-792-1948	<a href="mailto:fvolpi@sibfl.net">fvolpi@sibfl.net</a>
Claudia Hasbun	Ms. Hasbun	Planning / Zoning Director	City of Sunny Isles Beach	18070 Collins Avenue	Sunny Isles Beach	FL	33160	305-792-1757	<a href="mailto:chasbun@sibfl.net">chasbun@sibfl.net</a>
Mauricio Betancur	Mr. Betancur	City Clerk	City of Sunny Isles Beach	18070 Collins Avenue	Sunny Isles Beach	FL	33160	305-792-1703	<a href="mailto:cityclerk@sibfl.net;mbetancur@sibfl.net">cityclerk@sibfl.net;mbetancur@sibfl.net</a>

# Appendix A - Cultural Resource Committee

Contact Name	Letter Greeting Name	Agency	Position	Appointed By/Two-Year Term: 1/20 to 12/21	Street Address	City	State	Zip	Phone number	Email
Arie Steiger	Mr. Steiger	City of Sunny Isles Beach Historic Preservation Board/Atlantic Isles HOA	Chairperson/Atlantic Isles HOA President	Mayor Scholl	262 Atlantic Isle	Sunny Isles Beach	FL	33160	305-710-1230	steigera@bellsouth.net ariesteiger@gmail.com
Susan Simpson	Ms. Simpson	City of Sunny Isles Beach Historic Preservation Board	Assistant City Manager	City Manager's Office	18070 Collins Avenue	Sunny Isles Beach	FL	33160	305-792-1800	ssimpson@sibfl.net
Dione Del Monico	Ms. Monico	City of Sunny Isles Beach Historic Preservation Board	Member	Mayor Scholl	334 Atlantic Isle	Sunny Isles Beach	FL	33160	305-944-4766	dione100@aol.com
Rumiana Grozdanova	Ms. Grozdanova	City of Sunny Isles Beach Historic Preservation Board	Member	Vice Mayor Svechin	220 186 Street	Sunny Isles Beach	FL	33160	786-316-7890	rumiana.grozdanova@yahoo.com
Steven Hildrew	Mr. Hildrew	City of Sunny Isles Beach Historic Preservation Board	Member	Commissioner Lama	19140 Atlantic Blvd	Sunny Isles Beach	FL	33160	305-206-1778	steve@hildrew.com
Warren J. Stamm	Mr. Stamm	City of Sunny Isles Beach Historic Preservation Board	Member	Commissioner Goldman	16001 Collins Avenue #3204	Sunny Isles Beach	FL	33160	904-868-1635	wislegal@aol.com
Fabiola Stuyvesant	Ms. Stuyvesant	City of Sunny Isles Beach Historic Preservation Board	Member	Vice Mayor Svechin	326 Poinciana Drive	Sunny Isles Beach	FL	33160	786-271-6571	Fabistuy@outlook.com
Lindsay S Rothrock	Ms. Rothrock	Florida Department of State, Division of Historical Resources	Director		500 South Bronough Street 4th Floor	Tallahasee	FL	32399	850-245-6307	lindsay.rothrock@dos.myflorida.com
Jason Aldridge	Mr. Aldridge	Florida Department of State, Division of Historical Resources	Director		500 South Bronough Street 4th Floor	Tallahasee	FL	32399	850-245-6344	Jason.Aldridge@dos.myflorida.com
Alyssa McManus	Ms. McManus	Florida Department of State, Division of Historical Resources	Director		500 South Bronough Street 4th Floor	Tallahasee	FL	32399	850-245-6368	alyssa.mcmanus@dos.myflorida.com
Adrienne Daggett	Ms. Daggett	Florida Department of State, Division of Historical Resources	Director		500 South Bronough Street 4th Floor	Tallahasee	FL	32399	850-245-6372	Adrienne.Daggett@dos.myflorida.com
Chris Stahl	Mr. Stahl	Florida Department of Environmental Management	Director		3900 Commonwealth Blvd, Mail Station 47	Tallahasee	FL	32399	850-717-9076	Chris.Stahl@FloridaDEP.gov
Andrew A Kizlauskas	Mr. Kizlauskas	U.S. Army Corps of Engineers	Director		411	Panama City	FL	32407	904-304-9095	andrew.a.kizlauskas@usace.army.mil
Jennifer Zercher	Ms. Zercher	U.S. Coast Guard	Director		909 SE 1st Avenue Suite 432	Miami	FL	33131	305-415-6740	Jennifer.N.Zercher@uscg.mil
Sara Cody	Ms. Cody	Miami-Dade County Historic Preservation Board	Chief		111 NW 1st Street 12th Floor	Miami	FL	33128	305-375-4438	scody@miamidade.gov

# Appendix A - TRIBES

Tribe leader	Tribe / Affiliation Name	Title	Address	City	State	Zip	Phone	Email	
Mr. Jason Watts	Tribal Historic Preservation Office	FDOT Native American Coordinator	30290 Josie Billie Highway, PMB 1004	Clewiston	FL	33440	850-414-4316	<a href="mailto:jason.watts@dot.state.fl.us">jason.watts@dot.state.fl.us</a>	EMAIL
Mr. Larry Halkey	Poarch Band of Creek Indians	PBCI Tribal Historic Preservation Officer	5811 Jack Springs Road	Atmore	AL	36502	251-368-9136 ext. 2072	<a href="mailto:lhalkey@pci-nsn.gov">lhalkey@pci-nsn.gov</a>	EMAIL
Ms. Stephanie A. Bryan	Poarch Band of Creek Indians	Tribal Chair	5811 Jack Springs Road	Atmore	AL	36502	251-368-9136 ext. 2937	<a href="mailto:sbryan@pci-nsn.gov">sbryan@pci-nsn.gov</a>	
Mr. Billy Cypress	Miccosukee Tribe of Indians of Florida Tamiami Station	Chairman	P.O. Box 440021	Miami	FL	33144	305-480-1924	<a href="mailto:sales@miccosukeetours.com">sales@miccosukeetours.com</a>	
Mr. Kevin Donaldson	Miccosukee Tribe of Indians of Florida Tamiami Station	Environmental Specialist	P.O. Box 440021	Miami	FL	33144		<a href="mailto:kevind@miccosukeetribe.com">kevind@miccosukeetribe.com</a>	EMAIL
Mr. Greg Chilcoat	Seminole Nation of Oklahoma	Principal Chief	P.O. Box 1498	Wewoka	OK	74884	405-257-7200		
Ms. Brigita Leader	Seminole Nation of Oklahoma	Interim Director/TCNS Coordinator Historic Preservation Office	PO Box 1498	Wewoka	OK	74884	405-257-7200	<a href="mailto:leader_b@sno-nsn.gov">leader_b@sno-nsn.gov</a>	EMAIL
Mr. Marcellus W. Osceola	Seminole Tribe of Florida	Chairman	6300 Stirling Road	Hollywood	FL	33024	954-966-6300 or 800-683-7800		
Ms. Anne H. Mullins, MCRP	Seminole Tribe of Florida	Director, Heritage and Environmental Office (HERO)	30290 Josie Billie Highway, PMB 1004	Clewiston	FL	33440	863-983-6549 ext. 12262	<a href="mailto:annemullins@semtribe.com">annemullins@semtribe.com</a>	
Dr. Paul N. Backhouse	Seminole Tribe of Florida	Sr. Director, Heritage and Environmental Office (HERO)	30290 Josie Billie Highway, PMB 1004	Clewiston	FL	33440			
Mr. Bradley Mueller	Seminole Tribe of Florida	Compliance Review Supervisor Tribal Historic Preservation Office	30290 Josie Billie Highway, PMB 1004	Clewiston	FL	33440		<a href="mailto:THPOCompliance@semtribe.com">THPOCompliance@semtribe.com</a>	EMAIL

Appendix A - Property Owners 2024

Folio	Property Owner Name	Mailing Address
3.12214E+12	MARIA PEVZNER TRS	1 HEATHWOOD LN
3.12214E+12	ELENA UGOSETS	100 BAYVIEW DR #1202
3.12214E+12	MG & CG REAL ESTATE INC	1000 BRICKELL AVE #215
3.12214E+12	RT ADVISORY TEAM LLC	102 BEAUMONT ST
3.12214E+12	MICHAEL ROSIN	1030 N STATE ST #3L
3.12214E+12	TOMMY K HINDMAN	1043 SPY GLASS WAY
3.12214E+12	VLADIMIR MELAMED & W	1060 DEARBORN RD
3.12214E+12	RUBEN MORENO JR	10924 CRYSTAL SPRINGS LN
3.12214E+12	JCMD OF FLORIDA INC	1110 BRICKELL AVE #310
3.12214E+12	ABELARDO VARGAS & W JUDITH M	1113 CHIMNEY RIDGE DR
3.12214E+12	CHARLOTTE ANN CHARAPP TRS	114 HOLLYHOCK LN
3.12214E+12	MAYA LITVAK	119 S NEWPORT DR
3.12214E+12	CAI 7 CORP INC	11900 BISCAYNE BLVD #289
3.12214E+12	FRANCMARC LLC	11900 BISCAYNE BLVD #289
3.12214E+12	ROBERT SHABIN	12 SETTLERS TRAIL
3.12214E+12	CLIFFORD DEGEL	12 SUGAR MAPLE CT
3.12214E+12	ARIEL D SOFFER	1240 HARBOR CT
3.12214E+12	SHANE GROSMAN TRS	12840 N BAYSHORE DR
3.12214E+12	ANGELA FERRER	13333 COOPER RD
3.12214E+12	MAYA MAGID ZILBERMAN TRS	1337 RICHMOND RD
3.12214E+12	DIANE FAFARD SCATTOLIN	1400 CROISSANT MERIT #206
3.12214E+12	MAEJU18 LLC	1401 BRICKELL AVE #500
3.12214E+12	MICHAEL BARJESTEJH	1425 HUDSON ST #6G
3.12214E+12	VILVAR LLC	14409 NOTTINGHAM WAY CIR
3.12214E+12	EXECORP LLC	1441 BRICKELL AVE #1400
3.12214E+12	VICLOU SUNNY ISLES LLC	15103 TATENSHALL TRAIL
3.12214E+12	BORIS SHKOLNIKOV	15811 COLLINS AVE #2201
3.12214E+12	CURRENT OCCUPANT	16100 COLLINS AVE
3.12214E+12	CURRENT OCCUPANT	16200 COLLINS AVE
3.12214E+12	CURRENT OCCUPANT	16220 COLLINS AVE
3.12214E+12	CURRENT OCCUPANT	16300 COLLINS AVE
3.12214E+12	CURRENT OCCUPANT	16320 COLLINS AVE
3.12214E+12	OCEANIA IV CONDO ASSN INC	16400 COLLINS AVE
3.12214E+12	ALLA ROZENGURT	16400 COLLINS AVE #1041

3.12214E+12	MARGARITA Kholdarova	16400 COLLINS AVE #1042
3.12214E+12	BOZENNA MALINOWSKI	16400 COLLINS AVE #1043
3.12214E+12	CURRENT OCCUPANT	16400 COLLINS AVE #1044
3.12214E+12	CURRENT OCCUPANT	16400 COLLINS AVE #1045
3.12214E+12	HARVEY B OSHER & W TAMILA	16400 COLLINS AVE #1046
3.12214E+12	CURRENT OCCUPANT	16400 COLLINS AVE #1141
3.12214E+12	LORICA INVESTMENTS INC	16400 COLLINS AVE #1142
3.12214E+12	JORGE MANUEL DANTAS TEIXEIRA	16400 COLLINS AVE #1143
3.12214E+12	CURRENT OCCUPANT	16400 COLLINS AVE #1144
3.12214E+12	GREGORY KAPTSANOV & W ELIZABETH &	16400 COLLINS AVE #1145
3.12214E+12	CARLOS BAPTISTA	16400 COLLINS AVE #1146
3.12214E+12	PAUL S HUSSEY TRS	16400 COLLINS AVE #1241
3.12214E+12	RAPHAEL MOURAD	16400 COLLINS AVE #1242
3.12214E+12	GAD SOFFER & W MINA	16400 COLLINS AVE #1243
3.12214E+12	MARCOS CARDOSO CEZAR DA SILVA	16400 COLLINS AVE #1244
3.12214E+12	LUCIANO RUBINO	16400 COLLINS AVE #1245
3.12214E+12	MARCEL PLAZAS & IVONNE H	16400 COLLINS AVE #1246
3.12214E+12	ELIDA BARTELLE	16400 COLLINS AVE #1441
3.12214E+12	CURRENT OCCUPANT	16400 COLLINS AVE #1442
3.12214E+12	CURRENT OCCUPANT	16400 COLLINS AVE #1443
3.12214E+12	FMGL 4 LLC	16400 COLLINS AVE #1444
3.12214E+12	CURRENT OCCUPANT	16400 COLLINS AVE #1445
3.12214E+12	ALRICA CORPORATION	16400 COLLINS AVE #1446
3.12214E+12	CURRENT OCCUPANT	16400 COLLINS AVE #1541
3.12214E+12	RODRIGO S MENDELZON GONZALEZ	16400 COLLINS AVE #1542
3.12214E+12	CURRENT OCCUPANT	16400 COLLINS AVE #1543
3.12214E+12	1000373059 ONTARIO INC	16400 COLLINS AVE #1544
3.12214E+12	ROGERIO NERY DE SIGUEIRA SILVA	16400 COLLINS AVE #1545
3.12214E+12	CURRENT OCCUPANT	16400 COLLINS AVE #1546
3.12214E+12	SANJIV MODY	16400 COLLINS AVE #1641
3.12214E+12	CURRENT OCCUPANT	16400 COLLINS AVE #1642
3.12214E+12	CURRENT OCCUPANT	16400 COLLINS AVE #1643
3.12214E+12	MALU INC	16400 COLLINS AVE #1644
3.12214E+12	CURRENT OCCUPANT	16400 COLLINS AVE #1645
3.12214E+12	CURRENT OCCUPANT	16400 COLLINS AVE #1646

3.12214E+12	ENRIQUE HOCHMAN	16400 COLLINS AVE #1741
3.12214E+12	JOLUA INC	16400 COLLINS AVE #1742
3.12214E+12	ROBERTO DE ALBUQUERQUE CARDOSO	16400 COLLINS AVE #1743
3.12214E+12	CURRENT OCCUPANT	16400 COLLINS AVE #1744
3.12214E+12	MHSH8 LLC	16400 COLLINS AVE #1745
3.12214E+12	NAZAR INVESTMENT GROUP LLC	16400 COLLINS AVE #1746
3.12214E+12	LEJATJILA ARIVER OF MITZVOT LLC	16400 COLLINS AVE #1841
3.12214E+12	FURIA COMPANY LTD	16400 COLLINS AVE #1842
3.12214E+12	AIDA DELOUYA TRS	16400 COLLINS AVE #1843
3.12214E+12	LIBERTADOR LLC	16400 COLLINS AVE #1844
3.12214E+12	LEV MILTER TRS	16400 COLLINS AVE #1845
3.12214E+12	PENNY GOLDBERG TRS	16400 COLLINS AVE #1846
3.12214E+12	ALLA FRIDMAN	16400 COLLINS AVE #1941
3.12214E+12	GENNADY SHAFIROVICH	16400 COLLINS AVE #1942
3.12214E+12	LYUDMYLA SHYROKOVA	16400 COLLINS AVE #1943
3.12214E+12	COMERMA VENTURES S A	16400 COLLINS AVE #1944
3.12214E+12	PANELLI FILHO COLLINS LLC	16400 COLLINS AVE #1945
3.12214E+12	CURRENT OCCUPANT	16400 COLLINS AVE #1946
3.12214E+12	CURRENT OCCUPANT	16400 COLLINS AVE #2041
3.12214E+12	LEONID KOGAN	16400 COLLINS AVE #2042
3.12214E+12	CURRENT OCCUPANT	16400 COLLINS AVE #2043
3.12214E+12	BRUX INTERNATIONAL CORP	16400 COLLINS AVE #2044
3.12214E+12	JESSY MILSTEIN	16400 COLLINS AVE #2045
3.12214E+12	CURRENT OCCUPANT	16400 COLLINS AVE #2046
3.12214E+12	CURRENT OCCUPANT	16400 COLLINS AVE #2141
3.12214E+12	CURRENT OCCUPANT	16400 COLLINS AVE #2142
3.12214E+12	CURRENT OCCUPANT	16400 COLLINS AVE #2143
3.12214E+12	CURRENT OCCUPANT	16400 COLLINS AVE #2144
3.12214E+12	CURRENT OCCUPANT	16400 COLLINS AVE #2145
3.12214E+12	MICHAEL MARDER TRS	16400 COLLINS AVE #2146
3.12214E+12	MADLEY CORPORATION	16400 COLLINS AVE #2241
3.12214E+12	JORGE L OLIVER	16400 COLLINS AVE #2242
3.12214E+12	JEAN GAUDREAU & SYLVIE JOSEPH	16400 COLLINS AVE #2243
3.12214E+12	PACIFICTIME LLC	16400 COLLINS AVE #2243
3.12214E+12	CURRENT OCCUPANT	16400 COLLINS AVE #2244

3.12214E+12	ALAN KASYMOV	16400 COLLINS AVE #2245
3.12214E+12	CURRENT OCCUPANT	16400 COLLINS AVE #2246
3.12214E+12	MILTON LUIS SGARBI	16400 COLLINS AVE #2341
3.12214E+12	YURY NOSIKOVSKY	16400 COLLINS AVE #2342
3.12214E+12	CURRENT OCCUPANT	16400 COLLINS AVE #2343
3.12214E+12	TATYANA LAGUNOV	16400 COLLINS AVE #2344
3.12214E+12	RICARDO ANTARO DA SILVA	16400 COLLINS AVE #2345
3.12214E+12	GREGORY BABSKY	16400 COLLINS AVE #2346
3.12214E+12	CURRENT OCCUPANT	16400 COLLINS AVE #2441
3.12214E+12	HS1946 INTERNATIONAL CORP	16400 COLLINS AVE #2442
3.12214E+12	CURRENT OCCUPANT	16400 COLLINS AVE #2443
3.12214E+12	CURRENT OCCUPANT	16400 COLLINS AVE #2444
3.12214E+12	MURRY GRANEK	16400 COLLINS AVE #2445
3.12214E+12	BRONISLAV KAVSAN TRS	16400 COLLINS AVE #2446
3.12214E+12	KAWAI REAL ESTATE LLC	16400 COLLINS AVE #2541
3.12214E+12	RHONDA GINSBURG	16400 COLLINS AVE #2542
3.12214E+12	CURRENT OCCUPANT	16400 COLLINS AVE #2543
3.12214E+12	AMINE DOUKKALI	16400 COLLINS AVE #2544
3.12214E+12	WILLIAM STOKKAN & W DEBORAH	16400 COLLINS AVE #2545
3.12214E+12	CURRENT OCCUPANT	16400 COLLINS AVE #2546
3.12214E+12	CURRENT OCCUPANT	16400 COLLINS AVE #2641
3.12214E+12	MACEMI PLACE CORP	16400 COLLINS AVE #2642
3.12214E+12	GARY VINBAYTEL	16400 COLLINS AVE #2643
3.12214E+12	VIM INVESTMENTS LLC	16400 COLLINS AVE #2644
3.12214E+12	TATIANA NOVICHKOVA	16400 COLLINS AVE #2645
3.12214E+12	EMANUEL H WINER LE	16400 COLLINS AVE #2646
3.12214E+12	CURRENT OCCUPANT	16400 COLLINS AVE #2741
3.12214E+12	YURY FLOM	16400 COLLINS AVE #2742
3.12214E+12	NAPIURA RIVER S A	16400 COLLINS AVE #2743
3.12214E+12	LUIS B MARCANO	16400 COLLINS AVE #2744
3.12214E+12	RACHEL ROSEN	16400 COLLINS AVE #2745
3.12214E+12	ZEEV VOLCHIK	16400 COLLINS AVE #2746
3.12214E+12	CURRENT OCCUPANT	16400 COLLINS AVE #2841
3.12214E+12	MASIDETO LLC	16400 COLLINS AVE #2842
3.12214E+12	CURRENT OCCUPANT	16400 COLLINS AVE #2843



3.12214E+12	THIFI LLC	16400 COLLINS AVE #2844
3.12214E+12	CURRENT OCCUPANT	16400 COLLINS AVE #2845
3.12214E+12	DANIEL LEON RODE	16400 COLLINS AVE #2846
3.12214E+12	CURRENT OCCUPANT	16400 COLLINS AVE #341
3.12214E+12	DAVID AMRAM & LILIANE AMRAM LE	16400 COLLINS AVE #342
3.12214E+12	CURRENT OCCUPANT	16400 COLLINS AVE #343
3.12214E+12	L4 ASSETS LTD	16400 COLLINS AVE #441
3.12214E+12	CURRENT OCCUPANT	16400 COLLINS AVE #442
3.12214E+12	KHANNA HOCHBERG	16400 COLLINS AVE #443
3.12214E+12	MARGARITA SANTA TRS	16400 COLLINS AVE #444
3.12214E+12	RODNEY LOPES ESDRAS	16400 COLLINS AVE #445
3.12214E+12	CURRENT OCCUPANT	16400 COLLINS AVE #446
3.12214E+12	CURRENT OCCUPANT	16400 COLLINS AVE #541
3.12214E+12	CURRENT OCCUPANT	16400 COLLINS AVE #542
3.12214E+12	MARK BENSONOFF	16400 COLLINS AVE #543
3.12214E+12	PPI 1 LLC	16400 COLLINS AVE #544
3.12214E+12	CURRENT OCCUPANT	16400 COLLINS AVE #545
3.12214E+12	ROSS E FERRIER	16400 COLLINS AVE #546
3.12214E+12	BENIGNO CEDOLIN TRS	16400 COLLINS AVE #641
3.12214E+12	CURRENT OCCUPANT	16400 COLLINS AVE #642
3.12214E+12	FANNY YOHAI (LE)	16400 COLLINS AVE #643
3.12214E+12	CURRENT OCCUPANT	16400 COLLINS AVE #644
3.12214E+12	GEORGETTE & JOSEPH AQUINO	16400 COLLINS AVE #645
3.12214E+12	STEVEN HAIME LEVY & MARIA V	16400 COLLINS AVE #646
3.12214E+12	IRINA NIKITSKY	16400 COLLINS AVE #741
3.12214E+12	MARCOS BRONFMAN	16400 COLLINS AVE #742
3.12214E+12	OLEG LARIONOV	16400 COLLINS AVE #743
3.12214E+12	MARIAN SOBOLA	16400 COLLINS AVE #744
3.12214E+12	FIRA FURMAN	16400 COLLINS AVE #745
3.12214E+12	CURRENT OCCUPANT	16400 COLLINS AVE #746
3.12214E+12	MARCELO VINOLY	16400 COLLINS AVE #841
3.12214E+12	JOSE FERNANDEZ LAYA	16400 COLLINS AVE #842
3.12214E+12	OCEANIA FOUR LLC	16400 COLLINS AVE #842
3.12214E+12	CURRENT OCCUPANT	16400 COLLINS AVE #843
3.12214E+12	NATHAN & HADASSAH WINDMILLER (TR)	16400 COLLINS AVE #844

3.12214E+12	ALEXANDER GORODETSKY TRS	16400 COLLINS AVE #845
3.12214E+12	TARCIO BEZERRA	16400 COLLINS AVE #846
3.12214E+12	JOICE DE MATTOS NEGRAO GIRKUS	16400 COLLINS AVE #941
3.12214E+12	TOSKI CORP	16400 COLLINS AVE #942
3.12214E+12	PEGGY E HAMMOND TRS	16400 COLLINS AVE #943
3.12214E+12	MARIA LUCRECIA LOPEZ	16400 COLLINS AVE #944
3.12214E+12	EDWARD KINIGOPOULO & ELENA	16400 COLLINS AVE #945
3.12214E+12	LIGIA ESCOBAR OSPINA	16400 COLLINS AVE #946
3.12214E+12	CURRENT OCCUPANT	16400 COLLINS AVE #C21
3.12214E+12	CURRENT OCCUPANT	16400 COLLINS AVE #C22
3.12214E+12	CURRENT OCCUPANT	16400 COLLINS AVE #C23
3.12214E+12	CURRENT OCCUPANT	16400 COLLINS AVE #C24
3.12214E+12	CURRENT OCCUPANT	16400 COLLINS AVE #C25
3.12214E+12	CURRENT OCCUPANT	16400 COLLINS AVE #C26
3.12214E+12	CURRENT OCCUPANT	16400 COLLINS AVE #C27
3.12214E+12	CURRENT OCCUPANT	16400 COLLINS AVE #C28
3.12214E+12	CURRENT OCCUPANT	16400 COLLINS AVE #C29
3.12214E+12	METIS ADVISORY GROUP LLC	16400 COLLINS AVE #C31
3.12214E+12	CURRENT OCCUPANT	16400 COLLINS AVE #C310
3.12214E+12	CURRENT OCCUPANT	16400 COLLINS AVE #C311
3.12214E+12	ALLA ROZENGURT JTRS	16400 COLLINS AVE #C32
3.12214E+12	CURRENT OCCUPANT	16400 COLLINS AVE #C33
3.12214E+12	CURRENT OCCUPANT	16400 COLLINS AVE #C34
3.12214E+12	CURRENT OCCUPANT	16400 COLLINS AVE #C35
3.12214E+12	CURRENT OCCUPANT	16400 COLLINS AVE #C36
3.12214E+12	CURRENT OCCUPANT	16400 COLLINS AVE #C37
3.12214E+12	CURRENT OCCUPANT	16400 COLLINS AVE #C38
3.12214E+12	CURRENT OCCUPANT	16400 COLLINS AVE #C39
3.12214E+12	16400 COLLINS AK LLC	16400 COLLINS AVE #PH41
3.12214E+12	CURRENT OCCUPANT	16400 COLLINS AVE #PH42
3.12214E+12	ATUL DUBEY	16400 COLLINS AVE #PH43
3.12214E+12	CURRENT OCCUPANT	16400 COLLINS AVE #PH44
3.12214E+12	MADISOLJAS CORP	16400 COLLINS AVE #PH45
3.12214E+12	RAJESH L TOLANI TRS	16400 COLLINS AVE #PH46
3.12214E+12	CURRENT OCCUPANT	16400 COLLINS AVE #TH1

3.12214E+12	VICTORIA SHARP TRS	16400 COLLINS AVE #TH2
3.12214E+12	YOUR TOWN CORP	16400 COLLINS AVE #TH3
3.12214E+12	VIVIAN BRISMAN	16400 COLLINS AVE #TH4
3.12214E+12	SIMONA KOGAN	16400 COLLINS AVE #TH5
3.12214E+12	OCEANIA CLUB INC	16421 COLLINS AVE
3.12214E+12	ALBERICO ZENZOLA TRS	16425 COLLINS AVE #1611
3.12214E+12	JOHN HIGGINS & KATHARINA SCHULTZ	16445 COLLINS AVE #1425
3.12214E+12	SCORPIO PROPERTIES LLC	16460 NE 30 AVE
3.12214E+12	FELICE BATTISTA JTRS	16485 COLLINS AVE #1031
3.12214E+12	THE PRESTIGE GROUP INC	16485 COLLINS AVE #2136
3.12214E+12	TICKHILL INVESTMENTS LTD	16485 COLLINS AVE #2334
3.12214E+12	SEA ESTHER PROPERTIES LLC	16485 COLLINS AVE #WS9C
3.12214E+12	LUIS LUCIANI & W	16500 COLLINS AVE
3.12214E+12	ILYA GOLDBERG & LARISA	16500 COLLINS AVE #1051
3.12214E+12	VICTOR RUDERMAN TRS	16500 COLLINS AVE #1052
3.12214E+12	KIRINA KHANCHIK	16500 COLLINS AVE #1053
3.12214E+12	ZEYNEP VLAHOS	16500 COLLINS AVE #1054
3.12214E+12	RICARDO JUAN LEON	16500 COLLINS AVE #1055
3.12214E+12	CURRENT OCCUPANT	16500 COLLINS AVE #1056
3.12214E+12	KHASAN FAYZIEV	16500 COLLINS AVE #1151
3.12214E+12	CURRENT OCCUPANT	16500 COLLINS AVE #1152
3.12214E+12	CURRENT OCCUPANT	16500 COLLINS AVE #1153
3.12214E+12	CURRENT OCCUPANT	16500 COLLINS AVE #1154
3.12214E+12	FRANKLYN CASALE	16500 COLLINS AVE #1155
3.12214E+12	JUAN C VAZQUEZ	16500 COLLINS AVE #1156
3.12214E+12	BRIDGETOWN 16.500 INC	16500 COLLINS AVE #1251
3.12214E+12	CURRENT OCCUPANT	16500 COLLINS AVE #1252
3.12214E+12	VLADIMIR SADOVSKIY	16500 COLLINS AVE #1254
3.12214E+12	CURRENT OCCUPANT	16500 COLLINS AVE #1255
3.12214E+12	WALTER MITCHELL	16500 COLLINS AVE #1256
3.12214E+12	IGOR GORODETSKY TRS	16500 COLLINS AVE #1451
3.12214E+12	GENNADY VINOKUR TRS	16500 COLLINS AVE #1452
3.12214E+12	CURRENT OCCUPANT	16500 COLLINS AVE #1453
3.12214E+12	JCMD OF FLORIDA INC	16500 COLLINS AVE #1454
3.12214E+12	DENIS FISHMAN	16500 COLLINS AVE #1455

3.12214E+12	ALEXANDER ADELMAN TRS	16500 COLLINS AVE #1456
3.12214E+12	ALEXANDRE MOISSEEV	16500 COLLINS AVE #1551
3.12214E+12	DMITRI KRYLOV TRS	16500 COLLINS AVE #1552
3.12214E+12	CURRENT OCCUPANT	16500 COLLINS AVE #1553
3.12214E+12	STEVEN TABAK	16500 COLLINS AVE #1554
3.12214E+12	ALLA KOZLOVSKAIA	16500 COLLINS AVE #1555
3.12214E+12	CURRENT OCCUPANT	16500 COLLINS AVE #1556
3.12214E+12	HERNAN VERGARA	16500 COLLINS AVE #1651
3.12214E+12	CURRENT OCCUPANT	16500 COLLINS AVE #1652
3.12214E+12	KAREN LACHAPELLE	16500 COLLINS AVE #1653
3.12214E+12	GARY S SCHWEIFEL	16500 COLLINS AVE #1654
3.12214E+12	CURRENT OCCUPANT	16500 COLLINS AVE #1655
3.12214E+12	CURRENT OCCUPANT	16500 COLLINS AVE #1656
3.12214E+12	CURRENT OCCUPANT	16500 COLLINS AVE #1751
3.12214E+12	CURRENT OCCUPANT	16500 COLLINS AVE #1752
3.12214E+12	RICHARD JOSE KARAM	16500 COLLINS AVE #1753
3.12214E+12	CURRENT OCCUPANT	16500 COLLINS AVE #1754
3.12214E+12	BENEVOLENT MANAGEMENT INC	16500 COLLINS AVE #1755
3.12214E+12	RICHARD CAPPARELLI	16500 COLLINS AVE #1756
3.12214E+12	VEDAT KALKUZ	16500 COLLINS AVE #1851
3.12214E+12	CURRENT OCCUPANT	16500 COLLINS AVE #1852
3.12214E+12	RICHARD ALASTAIR DAWSON	16500 COLLINS AVE #1853
3.12214E+12	ARKADY NUDELMAN	16500 COLLINS AVE #1854
3.12214E+12	OKSANA SOKOLOVSKY	16500 COLLINS AVE #1855
3.12214E+12	ALFCARTECECA INC	16500 COLLINS AVE #1856
3.12214E+12	YURI GUREVICH	16500 COLLINS AVE #1951
3.12214E+12	CURRENT OCCUPANT	16500 COLLINS AVE #1952
3.12214E+12	O5 INVESTMENTS LLC	16500 COLLINS AVE #1953
3.12214E+12	RAHMI IPEK FLA INC	16500 COLLINS AVE #1954
3.12214E+12	GEORGE PIKUS TRS	16500 COLLINS AVE #1955
3.12214E+12	DRAGANA LINFIELD	16500 COLLINS AVE #1956
3.12214E+12	KAMILA FAYZIEVA	16500 COLLINS AVE #2051
3.12214E+12	CURRENT OCCUPANT	16500 COLLINS AVE #2052
3.12214E+12	NORBERTO ROSSI & FERNANDA	16500 COLLINS AVE #2053
3.12214E+12	ISAAC BOHBOT TRS	16500 COLLINS AVE #2054

3.12214E+12	CURRENT OCCUPANT	16500 COLLINS AVE #2055
3.12214E+12	DANIEL ARENOVICH & ADRIANA	16500 COLLINS AVE #2056
3.12214E+12	SOUTH ATLANTIC INVESTMENT LLC	16500 COLLINS AVE #2151
3.12214E+12	PAULO PESSOA DE BARRIOS SAVIOLI	16500 COLLINS AVE #2151
3.12214E+12	CURRENT OCCUPANT	16500 COLLINS AVE #2152
3.12214E+12	YAKOV ESTERLIS	16500 COLLINS AVE #2153
3.12214E+12	CURRENT OCCUPANT	16500 COLLINS AVE #2154
3.12214E+12	GILLINGS HOLDINGS LTD	16500 COLLINS AVE #2155
3.12214E+12	C HUMBERSTON & L RUFFIN LE	16500 COLLINS AVE #2156
3.12214E+12	CURRENT OCCUPANT	16500 COLLINS AVE #2251
3.12214E+12	BLACKWITHE CORP	16500 COLLINS AVE #2252
3.12214E+12	CURRENT OCCUPANT	16500 COLLINS AVE #2253
3.12214E+12	PECEMIA LLC	16500 COLLINS AVE #2254
3.12214E+12	DANIEL ZILBERMAN	16500 COLLINS AVE #2255
3.12214E+12	PROXIMA CAPITAL OF FLORDIA LLC	16500 COLLINS AVE #2256
3.12214E+12	PETER MELERUD	16500 COLLINS AVE #2351
3.12214E+12	CURRENT OCCUPANT	16500 COLLINS AVE #2352
3.12214E+12	SIOMA GERSHGORIN JTRS	16500 COLLINS AVE #2353
3.12214E+12	CURRENT OCCUPANT	16500 COLLINS AVE #2354
3.12214E+12	CURRENT OCCUPANT	16500 COLLINS AVE #2355
3.12214E+12	ALAN FRONSHTEIN	16500 COLLINS AVE #2356
3.12214E+12	CURRENT OCCUPANT	16500 COLLINS AVE #2451
3.12214E+12	LUNCH FAMILY LLC	16500 COLLINS AVE #2452
3.12214E+12	CURRENT OCCUPANT	16500 COLLINS AVE #2453
3.12214E+12	ALP DEMREN	16500 COLLINS AVE #2454
3.12214E+12	TREVOR PATTERSON JTRS	16500 COLLINS AVE #2455
3.12214E+12	JOSEPH TOLTSIS	16500 COLLINS AVE #2455
3.12214E+12	CURRENT OCCUPANT	16500 COLLINS AVE #2456
3.12214E+12	CURRENT OCCUPANT	16500 COLLINS AVE #254
3.12214E+12	JEWEL BERTMAN	16500 COLLINS AVE #255
3.12214E+12	INVERSIONES E INMUBLES MEXICANOS	16500 COLLINS AVE #2551
3.12214E+12	CURRENT OCCUPANT	16500 COLLINS AVE #2552
3.12214E+12	MARK J LISS TRS	16500 COLLINS AVE #2553
3.12214E+12	CURRENT OCCUPANT	16500 COLLINS AVE #2554
3.12214E+12	FORT HILLS WEST CORP	16500 COLLINS AVE #2555

3.12214E+12	CURRENT OCCUPANT	16500 COLLINS AVE #2556
3.12214E+12	MARGARITA MALYSHEVA	16500 COLLINS AVE #256
3.12214E+12	RODOLFO BILLOT	16500 COLLINS AVE #2651
3.12214E+12	NATALIA POLIAKOVA	16500 COLLINS AVE #2652
3.12214E+12	AYSEN MOSER	16500 COLLINS AVE #2653
3.12214E+12	KLAUS MOSER	16500 COLLINS AVE #2653
3.12214E+12	CLIVE LEWIS & W TERESA	16500 COLLINS AVE #2654
3.12214E+12	2655 OCEANIA V LLC	16500 COLLINS AVE #2655
3.12214E+12	PAOLA ANDREA JARA BODABILLA	16500 COLLINS AVE #2656
3.12214E+12	ERIC FRID & W	16500 COLLINS AVE #2751
3.12214E+12	OKSANA SLAVIN	16500 COLLINS AVE #2752
3.12214E+12	ALEXANDR GAGARIN	16500 COLLINS AVE #2753
3.12214E+12	MICHAEL W UHLMANN & W	16500 COLLINS AVE #2754
3.12214E+12	ANATOLY BEKKERMAN	16500 COLLINS AVE #2755
3.12214E+12	JCVM REAL ESTATE CORP	16500 COLLINS AVE #2756
3.12214E+12	ELLEN MIRSKY	16500 COLLINS AVE #2856
3.12214E+12	SEAHORSE PROPERTIES LLC	16500 COLLINS AVE #3055
3.12214E+12	MERIDIAN INTL HOLDINGS CORP	16500 COLLINS AVE #354
3.12214E+12	DANOF CORP	16500 COLLINS AVE #355
3.12214E+12	YOHAN OCHOA	16500 COLLINS AVE #356
3.12214E+12	YAVUZ HOCAOGLU	16500 COLLINS AVE #451
3.12214E+12	CURRENT OCCUPANT	16500 COLLINS AVE #452
3.12214E+12	CURRENT OCCUPANT	16500 COLLINS AVE #453
3.12214E+12	BOLCAR INTERNATIONAL INC	16500 COLLINS AVE #454
3.12214E+12	FRANCISCO J M LINARES & MARIA	16500 COLLINS AVE #455
3.12214E+12	CURRENT OCCUPANT	16500 COLLINS AVE #456
3.12214E+12	IRINA DANNIKOVA TRS	16500 COLLINS AVE #551
3.12214E+12	JUAN GERARDO BOUTSAKSIAN	16500 COLLINS AVE #552
3.12214E+12	GUSTAVO CIVIDANES FERNANDEZ	16500 COLLINS AVE #553
3.12214E+12	CALVIN ST G CHAMBERS & INGRID C	16500 COLLINS AVE #554
3.12214E+12	JUAN RODRIGUEZ	16500 COLLINS AVE #555
3.12214E+12	SINISA FLJANKOVIC & DRAGINJA	16500 COLLINS AVE #556
3.12214E+12	JOSEF BERAHA TRS	16500 COLLINS AVE #651
3.12214E+12	CURRENT OCCUPANT	16500 COLLINS AVE #652
3.12214E+12	JMP MIAMI LLC	16500 COLLINS AVE #653

3.12214E+12	CURRENT OCCUPANT	16500 COLLINS AVE #655
3.12214E+12	OSDI LLC	16500 COLLINS AVE #656
3.12214E+12	BREAKFAST FAMILY LLC	16500 COLLINS AVE #751
3.12214E+12	CURRENT OCCUPANT	16500 COLLINS AVE #752
3.12214E+12	CARLOS A MACCHI	16500 COLLINS AVE #753
3.12214E+12	DAVID PHILLIPS	16500 COLLINS AVE #754
3.12214E+12	CURRENT OCCUPANT	16500 COLLINS AVE #755
3.12214E+12	ARMANDO MONTALVO & MIRIAM	16500 COLLINS AVE #756
3.12214E+12	JEROEN WILLEM CANDEL	16500 COLLINS AVE #851
3.12214E+12	CURRENT OCCUPANT	16500 COLLINS AVE #852
3.12214E+12	CURRENT OCCUPANT	16500 COLLINS AVE #853
3.12214E+12	MERRICK GRAHAM FALKENSTEIN	16500 COLLINS AVE #854
3.12214E+12	STEVEN BREAKSTONE	16500 COLLINS AVE #855
3.12214E+12	SERGIO LIMOLI	16500 COLLINS AVE #856
3.12214E+12	VK TRS	16500 COLLINS AVE #951
3.12214E+12	VIKTORIYA KESLIN TRS	16500 COLLINS AVE #951
3.12214E+12	OJUS AJMERA	16500 COLLINS AVE #952
3.12214E+12	JOHANNA FERRERA LE	16500 COLLINS AVE #953
3.12214E+12	CURRENT OCCUPANT	16500 COLLINS AVE #954
3.12214E+12	HUBERT BENMOUSSA	16500 COLLINS AVE #955
3.12214E+12	ELZELENA M VARGAS	16500 COLLINS AVE #956
3.12214E+12	OCEANIA V CONDO ASSN INC	16500 COLLINS AVE #C31
3.12214E+12	CURRENT OCCUPANT	16500 COLLINS AVE #C310
3.12214E+12	CURRENT OCCUPANT	16500 COLLINS AVE #C311
3.12214E+12	CURRENT OCCUPANT	16500 COLLINS AVE #C32
3.12214E+12	CURRENT OCCUPANT	16500 COLLINS AVE #C33
3.12214E+12	CURRENT OCCUPANT	16500 COLLINS AVE #C34
3.12214E+12	CURRENT OCCUPANT	16500 COLLINS AVE #C35
3.12214E+12	CURRENT OCCUPANT	16500 COLLINS AVE #C36
3.12214E+12	CURRENT OCCUPANT	16500 COLLINS AVE #C37
3.12214E+12	CURRENT OCCUPANT	16500 COLLINS AVE #C38
3.12214E+12	CURRENT OCCUPANT	16500 COLLINS AVE #C39
3.12214E+12	JULIA ALEXANDROVICH	16500 COLLINS AVE #PHA
3.12214E+12	ALEXANDER FEDOTOV	16500 COLLINS AVE #PHB
3.12214E+12	RISHI KUKREJA	16500 COLLINS AVE #PHC

3.12214E+12	CURRENT OCCUPANT	16500 COLLINS AVE #PHD
3.12214E+12	SEAHORSE PROPERTIES LLC	16500 COLLINS AVE #PHE
3.12214E+12	CURRENT OCCUPANT	16500 COLLINS AVE #PHF
3.12214E+12	CURRENT OCCUPANT	16500 COLLINS AVE #TH10
3.12214E+12	CURRENT OCCUPANT	16500 COLLINS AVE #TH6
3.12214E+12	CURRENT OCCUPANT	16500 COLLINS AVE #TH7
3.12214E+12	MICHAEL GERSHGORIN	16500 COLLINS AVE #TH8
3.12214E+12	CARLOS ERNESTO CANTARELLA	16500 COLLINS AVE #TH9
3.12214E+12	PAUL LEVINSON & W ANNA O	16500 COLLINS AVE #TS1
3.12214E+12	EDUARD MAVASHEV	16500 COLLINS AVE #TS2
3.12214E+12	CURRENT OCCUPANT	16500 COLLINS AVE #TS3
3.12214E+12	GELSON ANTONIO PETTENON	16500 COLLNS AVE #2052
3.12214E+12	RONALD J TIPA TRS	16850-112 COLLINS AVE #665
3.12214E+12	REVIVAL INVESTMENT USA CORP	1745 E HALLANDALE BEACH BLVD #405
3.12214E+12	VLADIMIR RUDNEV & W IRINA &	17555 COLLINS AVE #1705
3.12214E+12	HERNAN GLEIZER & W	17875 COLLINS AVE #3703
3.12214E+12	CITY OF SUNNY ISLES BEACH	18070 COLLINS AVE
3.12214E+12	CIRCULAR INVESTMENTS LLC	1820 N CORPORATE LAKES BLVD #307
3.12214E+12	GMW USA CORPORATION	1835 NE MIAMI GARDENS DR #387
3.12214E+12	ANA DORFMAN TRS	18911 COLLINS AVE #507
3.12214E+12	HCM PROPERTY HOLDINGS	19 MUIRFIELD CIR
3.12214E+12	YAN KANDINOV	195 23 KENO AVE
3.12214E+12	INTERCOASTAL MARINA ASSN OCEANIA	19501 BISCAYNE BLVD #400
3.12214E+12	MARINA V SHAPIRO	20 LINDEN ST #202
3.12214E+12	CURRENT OCCUPANT	200 ATLANTIC AVE
3.12214E+12	ALEXANDER GOLDBERG	201 ATLANTIC AVE
3.12214E+12	BRATISLAV VLAHOVIC	205 ATLANTIC AVE
3.12214E+12	LUBA FRIEDBERG	206 ALLANDALE RD #1D
3.12214E+12	GILBERT BRENT LEV ASSEUR	208 PARKSIDE DR
3.12214E+12	ORSAY ROMA LLC	20900 NE 30 AVE #200 27
3.12214E+12	TIA TZIPE LLC	20949 NE 37 CT
3.12214E+12	VOLGANIK LLC	210 174 ST #1705
3.12214E+12	SUSAN SPILLOTIS	210 ATLANTIC AVE
3.12214E+12	CURRENT OCCUPANT	211 ATLANTIC AVE
3.12214E+12	JOHN J CAMPBELL JR	214 ATLANTIC AVE



3.12214E+12	JOHN J CAMPBELL JR	214 ATLANTIC ISLE
3.12214E+12	NISSIM SABAG	215 ATLANTIC AVE
3.12214E+12	EITELBERG GOMEZ MONTARROYO	217 ATLANTIC AVE
3.12214E+12	CURRENT OCCUPANT	219 ATLANTIC AVE
3.12214E+12	CURRENT OCCUPANT	224 ATLANTIC AVE
3.12214E+12	ADA MANAGEMENT SERVICES INC	23 SAINT MARIS CT
3.12214E+12	CURRENT OCCUPANT	230 ATLANTIC AVE
3.12214E+12	HECTOR P ORTIZ	231 ATLANTIC AVE
3.12214E+12	GASPAR VAZQUEZ &W	234 ATLANTIC AVE
3.12214E+12	ANDRES G RODRIGUEZ-DIAZ &W	235 ATLANTIC AVE
3.12214E+12	SHAY SEGEV	239 ATLANTIC AVE
3.12214E+12	EDUARDO D GARCIA FLORES	240 ATLANTIC AVE
3.12214E+12	SAINT JEROME PROPERTIES INC	2400 W SAMPLE RD #7
3.12214E+12	CURRENT OCCUPANT	241 ATLANTIC AVE
3.12214E+12	ERIC R SCHWARTZ TRS	2412 BARCELONA DR
3.12214E+12	PRECISA GROUP USA	2423 LEJEUNE RD
3.12214E+12	NORMAN S EDELCUP TR	244 ATLANTIC AVE
3.12214E+12	MOSHE WEITZ LC	244 POINCIANA DR
3.12214E+12	CURRENT OCCUPANT	245 ATLANTIC ISLE
3.12214E+12	MARINA SHAPIRO TRS	25 APPLETON CIR
3.12214E+12	542 RESIDENTIAL SIB LLC	250 95 ST
3.12214E+12	JURGEN EUGEN EISELE	250 ATLANTIC AVE
3.12214E+12	HEDITO INC	250 ATLANTIC AVE
3.12214E+12	CURRENT OCCUPANT	251 ATLANTIC AVE
3.12214E+12	PAULINE M HOLLAND	251 ATLANTIC ISLE
3.12214E+12	CURRENT OCCUPANT	255 ATLANTIC AVE
3.12214E+12	LUIS BENITEZ	255 ATLANTIC ISLE
3.12214E+12	CURRENT OCCUPANT	256 ATLANTIC AVE
3.12214E+12	CURRENT OCCUPANT	257 ATLANTIC AVE
3.12214E+12	ORANGE PROP INVESTMENTS LLC	2590 NE 201 ST
3.12214E+12	CURRENT OCCUPANT	260 ATLANTIC BLVD
3.12214E+12	CURRENT OCCUPANT	262 ATLANTIC AVE
3.12214E+12	JUDITH STEIGER TRS	262 ATLANTIC ISLES
3.12214E+12	HUB TVL LLC	2625 WESTON RD D
3.12214E+12	LUIS URBINA & FLOR M J TERRASA	263 ATLANTIC AVE

3.12214E+12	DAVID SCHULTZ	265 ATLANTIC AVE
3.12214E+12	AYSE ZEYNEP KOCABIYIK	265 SUNRISE HIGHWAY #1-335
3.12214E+12	ATLANTIC ISLAND CIVIC ASSN INC	269 ATLANTIC AVE
3.12214E+12	DANIEL IGLESIAS TRS	270 ATLANTIC AVE
3.12214E+12	KOUROSH HAMAMI NASAB	2707 SEDGWICK AVE #2E
3.12214E+12	MATHIEU BERGERON	273 ATLANTIC AVE
3.12214E+12	CURRENT OCCUPANT	274 ATLANTIC AVE
3.12214E+12	ALON STEIGER TRS	275 ATLANTIC AVE
3.12214E+12	ZULE LLC	2750 NE 185 ST #202
3.12214E+12	CHARRE CORP	277 ATLANTIC AVE
3.12214E+12	WILLIAM SLOBIN & W TRACY	27711 LAKEHILLS
3.12214E+12	HUMBERTO C ORTIZ	278 ATLANTIC AVE
3.12214E+12	CURRENT OCCUPANT	278 ATLANTIC BLVD
3.12214E+12	RAUL RODRIGUEZ TRS	279 ATLANTIC AVE
3.12214E+12	CURRENT OCCUPANT	282 ATLANTIC AVE
3.12214E+12	NELLIE SESSA & THOMAS A SESSA	282 ATLANTIC ISLES
3.12214E+12	CURRENT OCCUPANT	283 ATLANTIC AVE
3.12214E+12	THOMAS J O'CONNELL & W CHRISTINA	283 ATLANTIC ISLE DR
3.12214E+12	CURRENT OCCUPANT	287 ATLANTIC AVE
3.12214E+12	TALLY LEVY TRS	288 ATLANTIC AVE
3.12214E+12	ZORI HAYON	291 ATLANTIC AVE
3.12214E+12	GREGORY KORCHMAR	294 ATLANTIC AVE
3.12214E+12	311 ATLANTIC DEVELOPMENT LLC	2980 NE 207 ST #608
3.12214E+12	307 ATLANTIC DEVELOPMENT LLC	2980 NE 207 ST #608
3.12214E+12	299 ATLANTIC AVENUE INC	299 ATLANTIC AVE
3.12214E+12	SUNKOLED INC A	300 ATLANTIC AVE
3.12214E+12	VB RES LLC	300 S AUSTRALIAN AVE #1610
3.12214E+12	WORLD DIGITAL GROUP CORP INC	301 174 ST #605
3.12214E+12	ROSARIO FERRERO CARR TRS	301 W HALLANDALE BEACH BLVD
3.12214E+12	JULIAN ACOSTA & W VIVENCIA &	303 ATLANTIC AVE
3.12214E+12	ARTUR SHAKHOV TRS	306 ATLANTIC AVE
3.12214E+12	CURRENT OCCUPANT	307 ATLANTIC AVE
3.12214E+12	MIAMI DADE COUNTY	3071 SW 38 AVE
3.12214E+12	RICHARD A MUFSON & W LORETTA M	310 ATLANTIC AVE
3.12214E+12	CURRENT OCCUPANT	311 ATLANTIC AVE

3.12214E+12	ALEXANDER GORODETSKY TRS	3111 OCEAN PARKWAY #9K
3.12214E+12	16400 PH42 LLC	3131 SW 42 ST
3.12214E+12	CERRITO DE LA VICTORIA LLC	314 RAVEN CIR
3.12214E+12	FELIX I RODRIGUEZ	315 ATLANTIC AVE
3.12214E+12	VITALY PINCHUK	318 ATLANTIC AVE
3.12214E+12	NORMA CINTADO TIZZONI TRS	319 ATLANTIC AVE
3.12214E+12	HECTOR ORTIZ JR & W ANA M	320 ATLANTIC AVE
3.12214E+12	CURRENT OCCUPANT	323 ATLANTIC AVE
3.12214E+12	CURRENT OCCUPANT	325 ATLANTIC AVE
3.12214E+12	ANDREY SVANIDZE	325 ATLANTIC ISLE
3.12214E+12	SANDRA LEVY	326 ATLANTIC AVE
3.12214E+12	CURRENT OCCUPANT	329 ATLANTIC AVE
3.12214E+12	JAROSLAV GOLDMAN	33 W ONTARIO #36B
3.12214E+12	CURRENT OCCUPANT	330 ATLANTIC AVE
3.12214E+12	ADA FOX TRS	330 ATLANTIC ISLE
3.12214E+12	CURRENT OCCUPANT	333 ATLANTIC AVE
3.12214E+12	GEORGE H SCHOLL & W DIONE	334 ATLANTIC AVE
3.12214E+12	OLEG NEIZVESTNY	35 CARUSO PLACE
3.12214E+12	INVERDELA CORP	3511 SILVERSIDE RD #105
3.12214E+12	MARBELLA MURZI TRS	3550 MYSTIC POINTE DR #605
3.12214E+12	K4 INTERNATIONAL INC	40 SE 13 ST #802
3.12214E+12	CHABAD LUBAVITCH RUSSIAN CENTER	403 POINCIANA DR
3.12214E+12	PAUL SIEGEL	4411 PALM AVE
3.12214E+12	PAUL SIEGEL	4411 PALM LN
3.12214E+12	GULCAN USA INC	450 E LAS OLAS BLVD #800
3.12214E+12	FRACA CORPORATION	4770 BISCAYNE BLVD #1280
3.12214E+12	200 EGM HOLDINGS LLC	4920 NW 165 ST
3.12214E+12	BARRETO AND SONS	493 HOLIDAY DR
3.12214E+12	JGJR CARS LLC	5077 NW 7 ST #1512
3.12214E+12	MIN WELLMAN	515 E 79 ST #21E
3.12214E+12	ALAN G & ROBERT HORWITZ	6001 BONNIE VIEW DR
3.12214E+12	IOSIF FRADLIS LE	606 MICHELLE PL
3.12214E+12	BRENT S TOLLAKEN	612 TROUT RD POB 1
3.12214E+12	GENNADY VINOKUR TRS	6310 HUNTOVER LN
3.12214E+12	OCEANIA IV 1646 LLC	6767 COLLINS AVE #901

3.12214E+12	SGF PROPERTY PARTNERS LLC	690 LINCOLN RD #300
3.12214E+12	KIA NILI	7 NATHAN DR
3.12214E+12	OSCAR PELAEZ & W ISABEL	7 TALBOT DR
3.12214E+12	CURLY INVESTMENTS LLC TRS	7005 W 17 CT
3.12214E+12	YURI BIBA	730 WINDSWEPT LN
3.12214E+12	CYNTHIA ELAINE COOPER	7619 LEAFWOOD DR
3.12214E+12	ANATOLY ESTRIN	77 SLOPE DR
3.12214E+12	GERARDO KOCH	7950 NW 53 ST #118
3.12214E+12	RAPHAEL BERSHADSKY	804 DERON LOOP
3.12214E+12	16300 PM LLC	8105 W 20 AVE
3.12214E+12	I AND H INTERNATIONAL	8455 NW 34 DR
3.12214E+12	JORGE OLIVER	8555 16 ST #102
3.12214E+12	ANGELA AYZIN	8736 WONDERLAND PARK AVE
3.12214E+12	SARRA FRONSSTEIN TRS	8824 23 AVE
3.12214E+12	N AND B MANAGE LLC	93 FARMS ROAD CIR
3.12214E+12	SG PROPERTIES 2416 LLC	9401 COLLINS AVE #403

Mailing City	State	Mailing Zip Code
CHESTNUT HILL	MA	2467
SUNNY ISL BEACH	FL	33160-4757
MIAMI	FL	33131
BROOKLYN	NY	11235
CHICAGO	IL	60610
KNOXVILLE	TN	37922
FORT LEE	NJ	7024
ORLAND PARK	IL	60467
MIAMI	FL	33131
FUQUAY VARINA	NC	27526
PONTE VEDRA BEACH	FL	32082
NAPA	CA	94559
NORTH MIAMI	FL	33181
MIAMI	FL	33181
DARIEN	CT	6820
DIX HILLS	NY	11746
HOLLYWOOD	FL	33019
NORTH MIAMI	FL	33181
SPRING HILL	FL	34609
STATEN ISLAND	NY	10304
MONTREAL	QC	H3P3N6
MIAMI	FL	33131
HOBOKEN	NJ	07030-6172
ORLANDO	FL	32828
MIAMI	FL	33131
SOUTHWEST RANCHES	FL	33331
SUNNY ISLES BEACH	FL	33160
SUNNY ISLES BEACH	FL	33160-4500
SUNNY ISLES BEACH	FL	33160-4508
SUNNY ISLES BEACH	FL	33160-0000
SUNNY ISLES BEACH	FL	33160-0000
SUNNY ISLES BEACH	FL	33160-0000
MIAMI BEACH	FL	33160-4564
SUNNY ISLES BEACH	FL	33160

SUNNY ISLES BEACH	FL	33160
SUNNY ISLES BEACH	FL	33160
SUNNY ISLES BEACH	FL	33160-4564
SUNNY ISLES BEACH	FL	33160-4564
SUNNY ISLES BEACH	FL	33160-4568
SUNNY ISLES BEACH	FL	33160-4564
SUNNY ISLES BEACH	FL	33160
SUNNY ISLES BEACH	FL	33160
SUNNY ISLES BEACH	FL	33160-4564
SUNNY ISLES BEACH	FL	33160-4567
SUNNY ISLES BEACH	FL	33160
SUNNY ISLES BEACH	FL	33160
SUNNY ISLES BEACH	FL	33160
SUNNY ISLES BEACH	FL	33160-4567
SUNNY ISLES BEACH	FL	33160
AVENTURA	FL	33160
MIAMI BEACH	FL	33160-4567
MIAMI	FL	33160-4567
SUNNY ISLES BEACH	FL	33160-4564
SUNNY ISLES BEACH	FL	33160-4564
SUNNY ISL BCH	FL	33160-4567
SUNNY ISLES BEACH	FL	33160-4564
MIAMI BEACH	FL	33160
SUNNY ISLES BEACH	FL	33160-4564
SUNNY ISLES BEACH	FL	33160
SUNNY ISLES BEACH	FL	33160-4564
SUNNY ISLES BEACH	FL	33160
SUNNY ISLES BEACH	FL	33160
SUNNY ISLES BEACH	FL	33160-4564
SUNNY ISLES BEACH	FL	33160
SUNNY ISLES BEACH	FL	33160-4564
SUNNY ISLES BEACH	FL	33160-4564
SUNNY ISLES BEACH	FL	33160
SUNNY ISLES BEACH	FL	33160-4564
SUNNY ISLES BEACH	FL	33160-4564
SUNNY ISLES BEACH	FL	33160
SUNNY ISLES BEACH	FL	33160-4564
SUNNY ISLES BEACH	FL	33160-4564

SUNNY ISLES BEACH	FL	33160
SUNNY ISLES BEACH	FL	33160
SUNNY ISLES BEACH	FL	33160
SUNNY ISLES BEACH	FL	33160-4564
SUNNY ISLES BEACH	FL	33160
SUNNY ISLES BEACH	FL	33160
SUNNY ISLES BEACH	FL	33160
MIAMI BEACH	FL	33160-4566
SUNNY ISLES BEACH	FL	33160
SUNNY ISLES	FL	33160
MIAMI	FL	33160
MIAMI	FL	33160
SUNNY ISLES BEACH	FL	33160
SUNNY ISLES BEACH	FL	33160
MIAMI	FL	33160
SUNNY ISLES BEACH	FL	33160
SUNNY ISLES BEACH	FL	33160
SUNNY ISLES BEACH	FL	33160-4564
SUNNY ISLES BEACH	FL	33160-4564
SUNNY ISLES	FL	33160
SUNNY ISLES BEACH	FL	33160-4564
MIAMI	FL	33160-4584
MIAMI BEACH	FL	33160-4584
SUNNY ISLES BEACH	FL	33160-4564
SUNNY ISLES BEACH	FL	33160-4564
SUNNY ISLES BEACH	FL	33160-4564
SUNNY ISLES BEACH	FL	33160-4564
SUNNY ISLES BEACH	FL	33160-4564
SUNNY ISLES BEACH	FL	33160-4564
NORTH MIAMI BEACH	FL	33160
SUNNY ISLES BEACH	FL	33160
MIAMI	FL	33160
SUNNY ISLES BEACH	FL	33160-4565
SUNNY ISLES BEACH	FL	33160
SUNNY ISLES BEACH	FL	33160-4564

SUNNY ISLES BEACH	FL	33160
SUNNY ISLES BEACH	FL	33160-4564
SUNNY ISLES BEACH	FL	33160
SUNNY ISLES BEACH	FL	33160
SUNNY ISLES BEACH	FL	33160-4564
SUNNY ISLES BEACH	FL	33160
SUNNY ISLES BEACH	FL	33160
SUNNY ISLES BEACH	FL	33160
SUNNY ISLES BEACH	FL	33160-4564
SUNNY ISLES BEACH	FL	33160
SUNNY ISLES BEACH	FL	33160-4564
SUNNY ISLES BEACH	FL	33160-4564
SUNNY ISLES BEACH	FL	33160
SUNNY ISLES BEACH	FL	33160
SUNNY ISLES BEACH	FL	33160-4583
SUNNY ISLES BEACH	FL	33160-4564
SUNNY ISLES BEACH	FL	33160-4583
MIAMI	FL	33160-4583
SUNNY ISLES BEACH	FL	33160-4564
SUNNY ISLES BEACH	FL	33160-4564
SUNNY ISLES BEACH	FL	33160
MIAMI BEACH	FL	33160
SUNNY ISLES BEACH	FL	33160
SUNNY ISLES BEACH	FL	33160
SUNNY ISLES BEACH	FL	33160
SUNNY ISLES BEACH	FL	33160-4564
SUNNY ISLES BEACH	FL	33160
MIAMI BEACH	FL	33160-4563
MIAMI BEACH	FL	33160-4563
NORTH MIAMI BEACH	FL	33160
SUNNY ISLES BEACH	FL	33160
SUNNY ISLES BEACH	FL	33160-4564
SUNNY ISLES BEACH	FL	33160
SUNNY ISLES BEACH	FL	33160-4564



SUNNY ISLES BEACH	FL	33160
SUNNY ISLES BEACH	FL	33160-4564
SUNNY ISLES BEACH	FL	33160
SUNNY ISLES BEACH	FL	33160-4564
NORTH MIAMI BEACH	FL	33160
SUNNY ISLES BEACH	FL	33160-4564
SUNNY ISLES BEACH	FL	33160
SUNNY ISLES BEACH	FL	33160-4564
SUNNY ISLES BEACH	FL	33160
SUNNY ISLES BEACH	FL	33160
SUNNY ISLES BEACH	FL	33160
SUNNY ISLES BEACH	FL	33160-4564
SUNNY ISLES BEACH	FL	33160-4564
SUNNY ISLES BEACH	FL	33160-4564
SUNNY ISLES BEACH	FL	33160
SUNNY ISLES	FL	33160
SUNNY ISLES BEACH	FL	33160-4564
SUNNY ISLES BEACH	FL	33160
SUNNY ISLES BEACH	FL	33160
SUNNY ISLES BEACH	FL	33160-4564
SUNNY ISLES BEACH	FL	33160-4569
SUNNY ISLES BEACH	FL	33160-4564
MIAMI	FL	33160
MIAMI BEACH	FL	33160-4569
AVENTURA	FL	33160
SUNNY ISLES BEACH	FL	33160-4568
MIAMI	FL	33160
SUNNY ISLES BEACH	FL	33160-4568
SUNNY ISLES BEACH	FL	33160
SUNNY ISLES BEACH	FL	33160-4564
SUNNY ISLE	FL	33160
SUNNY ISLES	FL	33160
MIAMI	FL	33160
SUNNY ISLES BEACH	FL	33160-4564
SUNNY ISLES	FL	33160-4568

SUNNY ISLES BEACH	FL	33160
SUNNY ISLES BEACH	FL	33160
SUNNY ISLES BEACH	FL	33160
SUNNY ISLES BEACH	FL	33160-4568
SUNNY ISLES BEACH	FL	33160
SUNNY ISLES	FL	33160
SUNNY ISLES BEACH	FL	33160-4568
MIAMI BEACH	FL	33160-4568
SUNNY ISLES BEACH	FL	33160-4564
SUNNY ISLES BEACH	FL	33160-4564
SUNNY ISLES BEACH	FL	33160-4564
SUNNY ISLES BEACH	FL	33160-4564
SUNNY ISLES BEACH	FL	33160-4564
SUNNY ISLES BEACH	FL	33160-4564
SUNNY ISLES BEACH	FL	33160-4564
SUNNY ISLES BEACH	FL	33160-4564
SUNNY ISLES BEACH	FL	33160-4564
SUNNY ISLES BEACH	FL	33160
SUNNY ISLES BEACH	FL	33160-4564
SUNNY ISLES BEACH	FL	33160-4564
SUNNY ISLES	FL	33160
SUNNY ISLES BEACH	FL	33160-4564
SUNNY ISLES BEACH	FL	33160-4564
SUNNY ISLES BEACH	FL	33160-4564
SUNNY ISLES BEACH	FL	33160-4564
SUNNY ISLES BEACH	FL	33160-4564
SUNNY ISLES BEACH	FL	33160-4564
SUNNY ISLES BEACH	FL	33160
SUNNY ISLES BEACH	FL	33160-4564
SUNNY ISLES BEACH	FL	33160
SUNNY ISLES BEACH	FL	33160-4564
SUNNY ISLES BEACH	FL	33160-4564
SUNNY ISLES BEACH	FL	33160-4564
SUNNY ISLES BEACH	FL	33160-4564
SUNNY ISLES BEACH	FL	33160
SUNNY ISLES BEACH	FL	33160-4564
SUNNY ISLES BEACH	FL	33160
SUNNY ISLES BEACH	FL	33160-4564
SUNNY ISLES BEACH	FL	33160-4563
SUNNY ISLES BEACH	FL	33160
SUNNY ISLES BEACH	FL	33160-4564

SUNNY ISLES BEACH	FL	33160
MIAMI BEACH	FL	33160-4563
SUNNY ISLES BEACH	FL	33160
SUNNY ISLES BEACH	FL	33160
SUNNY ISLES BEACH	FL	33160-4550
SUNNY ISLES BEACH	FL	33160
SUNNY ISLES BCH	FL	33160
NORTH MIAMI BEACH	FL	33160
SUNNY ISLES BEACH	FL	33160
SUNNY ISLES	FL	33160-4552
SUNNY ISLES BEACH	FL	33160
SUNNY ISLES BEACH	FL	33160
SUNNY ISLE BEACH	FL	33160
SUNNY ISLES BEACH	FL	33160-4589
SUNNY ISLES BEACH	FL	33160
SUNNY ISLE	FL	33160
SUNNY ISLES BEACH	FL	33160
SUNNY ISLES BEACH	FL	33160
SUNNY ISLES BEACH	FL	33160-4539
SUNNY ISLES BEACH	FL	33160
SUNNY ISLES BEACH	FL	33160-4539
SUNNY ISLES BEACH	FL	33160-4539
SUNNY ISLES BEACH	FL	33160-4539
SUNNY ISLES BEACH	FL	33160
SUNNY ISLES BEACH	FL	33160-4589
SUNNY ISLES BEACH	FL	33160
SUNNY ISLES BEACH	FL	33160-4539
SUNNY ISLES BEACH	FL	33160
SUNNY ISLES BEACH	FL	33160-4539
SUNNY ISLES BEACH	FL	33160
SUNNY ISLES BEACH	FL	33160
SUNNY ISLES BEACH	FL	33160
SUNNY ISLES BEACH	FL	33160-4539
SUNNY ISLES BEACH	FL	33160
NO MIAMI BEACH	FL	33160-4590

SUNNY ISLES BEACH	FL	33160
SUNNY ISLES BEACH	FL	33160
SUNNY ISLES BEACH	FL	33160
SUNNY ISLES BEACH	FL	33160-4539
SUNNY ISLES	FL	33160
SUNNY ISLES BEACH	FL	33160
SUNNY ISLES BEACH	FL	33160-4539
SUNNY ISLES BEACH	FL	33160-4590
SUNNY ISLES BEACH	FL	33160-4539
SUNNY ISLES BEACH	FL	33160
SUNNY ISLES BEACH	FL	33160
SUNNY ISLES BEACH	FL	33160-4539
SUNNY ISLES BEACH	FL	33160-4539
SUNNY ISLES BEACH	FL	33160-4539
SUNNY ISLES BEACH	FL	33160-4539
SUNNY ISLES BEACH	FL	33160
SUNNY ISLES BEACH	FL	33160-4539
MIAMI	FL	33160-4590
SUNNY ISLES BEACH	FL	33160
MIAMI	FL	33160
SUNNY ISLES BEACH	FL	33160-4539
SUNNY ISLES BEACH	FL	33160
SUNNY ISLES BEACH	FL	33160
SUNNY ISLES BEACH	FL	33160
SUNNY ISLES BEACH	FL	33160-4591
SUNNY ISLES BEACH	FL	33160
SUNNY ISLES BEACH	FL	33160-4539
SUNNY ISLES BEACH	FL	33160
SUNNY ISLES	FL	33160-4591
SUNNY ISLES BEACH	FL	33160
SUNNY ISLES BEACH	FL	33160
SUNNY ISLES BEACH	FL	33160
SUNNY ISLES BEACH	FL	33160-4539
SUNNY ISLES BEACH	FL	33160-4591
SUNNY ISLES BEACH	FL	33160

SUNNY ISLES BEACH	FL	33160-4539
SUNNY ISLES BEACH	FL	33160-4591
SUNNY ISLES BEACH	FL	33160
AVENTURA	FL	33160
SUNNY ISLES BEACH	FL	33160-4539
SUNNY ISLES BEACH	FL	33160
SUNNY ISLES BEACH	FL	33160-4539
MIAMI	FL	33160
SUNNY ISLES BEACH	FL	33160-4591
SUNNY ISLES BEACH	FL	33160-4539
SUNNY ISLES BEACH	FL	33160-4539
SUNNY ISLES BEACH	FL	33160-4539
SUNNY ISLES BEACH	FL	33160-4592
SUNNY ISLES BEACH	FL	33160
SUNNY ISLES BEACH	FL	33160
SUNNY ISLES BEACH	FL	33160
SUNNY ISLES BEACH	FL	33160-4539
SUNNY ISLES	FL	33160
SUNNY ISLES BEACH	FL	33160-4539
SUNNY ISLES BEACH	FL	33160-4539
SUNNY ISLES BEACH	FL	33160
SUNNY ISLES BEACH	FL	33160-4539
SUNNY ISLES BEACH	FL	33160
SUNNY ISLES BEACH	FL	33160-4539
MIAMI	FL	33160
SUNNY ISLES BEACH	FL	33160
SUNNY ISLES BEACH	FL	33160
SUNNY ISLES BEACH	FL	33160-4539
SUNNY ISLES BEACH	FL	33160-4539
SUNNY ISLES BEACH	FL	33160
SUNNY ISLES BEACH	FL	33160-4592
SUNNY ISLES BEACH	FL	33160-4539
SUNNY ISLES BCH	FL	33160
SUNNY ISLES BEACH	FL	33160-4539
SUNNY ISLES BEACH	FL	33160

SUNNY ISLES BEACH	FL	33160-4539
MIAMI	FL	33160
NORTH MIAMI BEACH	FL	33160
SUNNY ISLES BEACH	FL	33160-4592
SUNNY ISLES BEACH	FL	33160
SUNNY ISL BCH	FL	33160-4592
SUNNY ISLES BEACH	FL	33160
SUNNY ISLES BEACH	FL	33160
SUNNY ISLES BEACH	FL	33160
SUNNY ISLES BEACH	FL	33160-4593
SUNNY ISLES BEACH	FL	33160
SUNNY ISLES BEACH	FL	33160
SUNNY ISLES BEACH	FL	33160-4593
SUNNY ISLES BEACH	FL	33160
SUNNY ISLES BEACH	FL	33160
SUNNY ISLES BEACH	FL	33160-4593
SUNNY ISLES BEACH	FL	33160
SUNNY ISLES BEACH	FL	33160-4587
SUNNY ISLES BEACH	FL	33160
SUNNY ISLES BEACH	FL	33160
SUNNY ISLES BEACH	FL	33160
SUNNY ISLES BEACH	FL	33160-4539
SUNNY ISLES BEACH	FL	33160-4539
SUNNY ISLES	FL	33160
SUNNY ISLES BEACH	FL	33160-4587
SUNNY ISLES BEACH	FL	33160-4539
SUNNY ISLES BEACH	FL	33160
SUNNY ISLES BEACH	FL	33160-4539
SUNNY ISLES BEACH	FL	33160
SUNNY ISLES BEACH	FL	33160-4588
SUNNY ISLES BEACH	FL	33160-4588
SUNNY ISLES BEACH	FL	33160-4588
SUNNY ISLE	FL	33160
SUNNY ISLES BEACH	FL	33160-4539
SUNNY ISLES BEACH	FL	33160

SUNNY ISLES BEACH	FL	33160-4539
SUNNY ISLES BEACH	FL	33160
SUNNY ISLES BEACH	FL	33160
SUNNY ISLES BEACH	FL	33160-4539
SUNNY ISLES BEACH	FL	33160
MIAMI	FL	33160
SUNNY ISLES BEACH	FL	33160-4539
SUNNY ISLES BEACH	FL	33160-4588
SUNNY ISLES BEACH	FL	33160
SUNNY ISLES BEACH	FL	33160-4539
SUNNY ISLES BEACH	FL	33160-4539
SUNNY ISLES BEACH	FL	33160
SUNNY ISLES BEACH	FL	33160-4588
SUNNY ISLES BEACH	FL	33160-4588
SUNNY ISLES	FL	33160
SUNNY ISLES BEACH	FL	33160
SUNNY ISLES BEACH	FL	33160-4588
SUNNY ISLES BEACH	FL	33160-4588
SUNNY ISLES BEACH	FL	33160-4539
SUNNY ISLES	FL	33160
SUNNY ISLES BCH	FL	33160
SUNNY ISLES BEACH	FL	33160-4539
SUNNY ISLES BEACH	FL	33160-4539
SUNNY ISLES BEACH	FL	33160-4539
SUNNY ISLES BEACH	FL	33160-4539
SUNNY ISLES BEACH	FL	33160-4539
SUNNY ISLES BEACH	FL	33160-4539
SUNNY ISLES BEACH	FL	33160-4539
SUNNY ISLES BEACH	FL	33160-4539
SUNNY ISLES BEACH	FL	33160-4539
SUNNY ISLES BEACH	FL	33160-4539
SUNNY ISLES BEACH	FL	33160
SUNNY ISLES BEACH	FL	33160
SUNNY ISLES BEACH	FL	33160-4539

SUNNY ISLES BEACH	FL	33160-4539
SUNNY ISLES BEACH	FL	33160
SUNNY ISLES BEACH	FL	33160-4539
SUNNY ISLES BEACH	FL	33160-4539
SUNNY ISLES BEACH	FL	33160-4539
SUNNY ISLES BEACH	FL	33160-4539
SUNNY ISLES BEACH	FL	33160
SUNNY ISLES BEACH	FL	33160-4539
SUNNY ISLES BEACH	FL	33160-4539
SUNNY ISLES BEACH	FL	33160
SUNNY ISLES BEACH	FL	33160-4539
SUNNY ISLES BEACH	FL	33160
SUNNY ISLES	FL	33160
HALLANDALE	FL	33009
AVENTURA	FL	33160-2888
SUNNY ISLES BEACH	FL	33160
SUNNY ISLES BEACH	FL	33160
WESTON	FL	33326
NORTH MIAMI BEACH	FL	33179
SUNNY ISLES BEACH	FL	33160
WHEATON	IL	60189
QUEENS	NY	11423
AVENTURA	FL	33180-2337
ALLSTON	MA	2134
SUNNY ISLES BEACH	FL	33160-4516
SUNNY ISLES BEACH	FL	33160
NO MIAMI BEACH	FL	33160
CHESTNUT HILL	MA	2467
SUFFERN	NY	10901
AVENTURA	FL	33180
AVENTURA	FL	33180
SUNNY ISLES BEACH	FL	33160
MIAMI	FL	33160
SUNNY ISLES BEACH	FL	33160-4501
MIAMI BEACH	FL	33160



MIAMI BEACH	FL	33160-4516
MIAMI	FL	33160-4501
SUNNY ISLES BEACH	FL	33160
SUNNY ISLES BEACH	FL	33160-0000
SUNNY ISLES BEACH	FL	33160-4516
BROOKLINE	MA	2446
SUNNY ISLES BEACH	FL	33160-4516
MIAMI	FL	33160
SUNNY ISLES BEACH	FL	33160
SUNNY ISLE	FL	33160-4501
SUNNY ISL BCH	FL	33160-4501
SUNNY ISLES BEACH	FL	33160
POMPANO BEACH	FL	33073
SUNNY ISLES BEACH	FL	33160-4501
FORT LAUDERDALE	FL	33301
CORAL GABLES	FL	33134
MIAMI	FL	33160-4516
MIAMI	FL	33160-4517
SUNNY ISLES BEACH	FL	33160-4501
NEWTON	MA	2459
SURFSIDE	FL	33154
SUNNY ISLES BEACH	FL	33160
SUNNY ISLE BEACH	FL	33160
SUNNY ISLES BEACH	FL	33160-4501
MIAMI BEACH	FL	33160-4501
SUNNY ISLES BEACH	FL	33160-4501
NORTH MIAMI BEACH	FL	33160
SUNNY ISLES BEACH	FL	33160-4528
SUNNY ISLES BEACH	FL	33160-4501
MIAMI	FL	33180
SUNNY ISLES BEACH	FL	33160-4528
SUNNY ISLES BEACH	FL	33160-4528
NORTH MIAMI BEACH	FL	33160
WESTON	FL	33331
NORTH MIAMI BEACH	FL	33160

SUNNY ISLES	FL	33160-0000
ROCKVILLE CENTRE	NY	11570
SUNNY ISLES BEACH	FL	33160
SUNNY ISLES BEACH	FL	33160
BRONX	NY	10468
SUNNY ISLES BEACH	FL	33160
SUNNY ISLES BEACH	FL	33160-4528
SUNNY ISLES BEACH	FL	33160
AVENTURA	FL	33180
SUNNY ISLES BEACH	FL	33160
FRANKLIN	MI	48025
SUNNY ISLES	FL	33160
SUNNY ISLES BEACH	FL	33160-4528
SUNNY ISLES	FL	33160
SUNNY ISLES BEACH	FL	33160-4528
SUNNY ISLES	FL	33160-4528
SUNNY ISLES BEACH	FL	33160-4527
MIAMI	FL	33160-4527
SUNNY ISLES BEACH	FL	33160-4527
SUNNY ISLES BEACH	FL	33160
SUNNY ISLES BEACH	FL	33160
SUNNY ISLE	FL	33160
AVENTURA	FL	33180
AVENTURA	FL	33180
SUNNY ISLE	FL	33160
SUNNY ISLES BEACH	FL	33160
WEST PALM BEACH	FL	33401
SUNNY ISLES BEACH	FL	33160
HALLANDALE BEACH	FL	33009
MIAMI	FL	33160-4502
SUNNY ISLES BEACH	FL	33160
SUNNY ISLES BEACH	FL	33160-4502
MIAMI	FL	33146
MIAMI	FL	33160-4515
SUNNY ISLES BEACH	FL	33160-4502

BROOKLYN	NY	11235
FORT LAUDERDALE	FL	33312
WYOMING	DE	19934
MIAMI	FL	33160
SUNNY ISLES BEACH	FL	33160
SUNNY ISLES BEACH	FL	33160
MIAMI	FL	33160
SUNNY ISLES BEACH	FL	33160-4502
SUNNY ISLES BEACH	FL	33160-4502
SUNNY ISLE BEACH	FL	33160
SUNNY ISLES BEACH	FL	33160
SUNNY ISLES BEACH	FL	33160-4502
CHICAGO	IL	60654
SUNNY ISLES BEACH	FL	33160-4515
SUNNY ISLES BEACH	FL	33160
SUNNY ISLES BEACH	FL	33160-4502
MIAMI	FL	33160-4515
ARMONK	NY	10504
WILMINGTON	DE	19810
AVENTURA	FL	33180
MIAMI	FL	33130
SUNNY ISLES BEACH	FL	33106
MIAMI	FL	33137
MIAMI	FL	33137
FORT LAUDERDALE	FL	33301
MIAMI	FL	33137
MIAMI	FL	33014
HALLANDALE BEACH	FL	33309
MIAMI	FL	33126
NEW YORK	NY	10075
BALTIMORE	MD	21209
VALLEY STREAM	NY	11581
WISCONSIN DELLS	WI	53965
ROCKVILLE	MD	20852
MIAMI	FL	33141

MIAMI BEACH	FL	33139
TOWACO	NJ	7082
LAKE SUCCESS	NY	11020
HIALEAH	FL	33014
FRANKLIN LAKES	NJ	7417
NORFOLK	VA	23518
SHORT HILLS	NJ	7078
MIAMI	FL	33166
HIGHWOOD	IL	60040
HIALEAH	FL	33014-3231
DORAL	FL	33122
SILVER SPRINGS	MD	20910
LOS ANGELES	CA	90046
BROOKLYN	NY	11214
EAST BRUNSWICK	NJ	8816
SURFSIDE	FL	33154

Appendix A - Property Owners

Folio	Property Owner Name	OR CURRENT OCCUPANT	Mailing Address	Mailing City	State	Mailing Zip Code
31-2214-003-0760	274 ATLANTIC ISLES	OR CURRENT OCCUPANT	9100 S DADELAND BLVD #912	MIAMI	FL	33156
31-2214-003-0561	ADA FOX	OR CURRENT OCCUPANT	330 ATLANTIC ISLE	SUNNY ISLES BEACH	FL	33160
31-2214-003-0410	ALAN & ADRIANA MAMIEL	OR CURRENT OCCUPANT	307 ATLANTIC AVE	MIAMI	FL	33160-4502
31-2214-003-0300	ALON STEIGER	OR CURRENT OCCUPANT	275 ATLANTIC AVE	SUNNY ISLES BEACH	FL	33160
31-2214-003-0130	ANDRES RODRIGUEZ-DIAZ	OR CURRENT OCCUPANT	235 ATLANTIC AVE	SUNNY ISLE	FL	33160-4501
31-2214-003-1350	ATLANTIC ISLAND CIVIC ASSN INC	OR CURRENT OCCUPANT	262 ATLANTIC AVE	MIAMI	FL	33160
31-2214-003-0580	BBAR INVESTMENTS	OR CURRENT OCCUPANT	318 ATLANTIC AVE	SUNNY ISLE	FL	33160
31-2214-003-0030	BRATISLAV VLAHOVIC	OR CURRENT OCCUPANT	205 ATLANTIC AVE	NO MIAMI BEACH	FL	33160
31-2214-003-0960	CHABAD LUBAVITCH RUSSIAN CENTER	OR CURRENT OCCUPANT	403 POINCIANA DR	SUNNY ISLES BEACH	FL	33160
31-2214-003-0310	CHARRE CORP	OR CURRENT OCCUPANT	277 ATLANTIC AVE	SUNNY ISLES BEACH	FL	33160
31-2214-003-1020	CURRENT OCCUPANT		200 ATLANTIC AVE	SUNNY ISLES BEACH	FL	33160-4516
31-2214-003-0970	CURRENT OCCUPANT		224 ATLANTIC AVE	SUNNY ISLES BEACH	FL	33160-4516
31-2214-003-0960	CURRENT OCCUPANT		230 ATLANTIC AVE	SUNNY ISLES BEACH	FL	33160-4516
31-2214-003-0170	CURRENT OCCUPANT		241 ATLANTIC AVE	SUNNY ISLES BEACH	FL	33160-4501
31-2214-003-0180	CURRENT OCCUPANT		245 ATLANTIC ISLE	SUNNY ISLES BEACH	FL	33160-4501
31-2214-003-0200	CURRENT OCCUPANT		251 ATLANTIC AVE	SUNNY ISLES BEACH	FL	33160-4501
31-2214-003-0220	CURRENT OCCUPANT		255 ATLANTIC AVE	SUNNY ISLES BEACH	FL	33160-4501
31-2214-003-0830	CURRENT OCCUPANT		256 ATLANTIC AVE	SUNNY ISLES BEACH	FL	33160-4528
31-2214-003-0230	CURRENT OCCUPANT		257 ATLANTIC AVE	SUNNY ISLES BEACH	FL	33160-4501
31-2214-003-0810	CURRENT OCCUPANT		260 ATLANTIC BLVD	SUNNY ISLES BEACH	FL	33160-4528
31-2214-003-1350	CURRENT OCCUPANT		269 ATLANTIC AVE	SUNNY ISLES BEACH	FL	33160-0000
31-2214-003-0760	CURRENT OCCUPANT		274 ATLANTIC AVE	SUNNY ISLES BEACH	FL	33160-4528
31-2214-003-0730	CURRENT OCCUPANT		278 ATLANTIC BLVD	SUNNY ISLES BEACH	FL	33160-4528
31-2214-003-0700	CURRENT OCCUPANT		282 ATLANTIC AVE	SUNNY ISLES BEACH	FL	33160-4528
31-2214-003-0330	CURRENT OCCUPANT		283 ATLANTIC AVE	SUNNY ISLES BEACH	FL	33160-4527
31-2214-003-0350	CURRENT OCCUPANT		287 ATLANTIC AVE	SUNNY ISLES BEACH	FL	33160-4527
31-2214-003-0620	CURRENT OCCUPANT		306 ATLANTIC AVE	SUNNY ISLES BEACH	FL	33160-4515
31-2214-003-0430	CURRENT OCCUPANT		311 ATLANTIC AVE	SUNNY ISLES BEACH	FL	33160-4502
31-2214-003-0470	CURRENT OCCUPANT		323 ATLANTIC AVE	SUNNY ISLES BEACH	FL	33160-4502
31-2214-003-0490	CURRENT OCCUPANT		325 ATLANTIC AVE	SUNNY ISLES BEACH	FL	33160-4502
31-2214-003-0510	CURRENT OCCUPANT		329 ATLANTIC AVE	SUNNY ISLES BEACH	FL	33160-4502
31-2214-003-0561	CURRENT OCCUPANT		330 ATLANTIC AVE	SUNNY ISLES BEACH	FL	33160-4515
31-2214-003-0780	DANIEL IGLESIAS	OR CURRENT OCCUPANT	270 ATLANTIC AVE	SUNNY ISLES BEACH	FL	33160
31-2214-003-0150	DAVID BOUGANIM	OR CURRENT OCCUPANT	239 ATLANTIC AVE	SUNNY ISLES BEACH	FL	33160
31-2214-003-0430	DAVID NOSIKOVSKY	OR CURRENT OCCUPANT	17555 COLLOINS AVE #1108	SUNNY ISLES BEACH	FL	33160
31-2214-003-0490	DAVID NOSIKOVSKY	OR CURRENT OCCUPANT	325 ATLANTIC ISLE	SUNNY ISLE BEACH	FL	33160
31-2214-003-0270	DAVID SCHULTZ	OR CURRENT OCCUPANT	265 ATLANTIC AVE	SUNNY ISLES	FL	33160-0000
31-2214-003-0910	EDUARDO D GARCIA FLORES	OR CURRENT OCCUPANT	240 ATLANTIC AVE	SUNNY ISLES BEACH	FL	33160
31-2214-003-0070	EITELBERG GOMEZ MONTARROYO	OR CURRENT OCCUPANT	217 ATLANTIC AVE	SUNNY ISLES BEACH	FL	33160
31-2214-003-0050	ELENA UGORETS	OR CURRENT OCCUPANT	211 ATLANTIC AVE	SUNNY ISLE	FL	33160
31-2214-003-0970	ERALMA	OR CURRENT OCCUPANT	457 ALDRIDGE LN	DAVENPORT	FL	33897
31-2214-003-0440	FELIX I RODRIGUEZ	OR CURRENT OCCUPANT	315 ATLANTIC AVE	MIAMI	FL	33160
31-2214-003-0920	GASPAR & W VAZQUEZ	OR CURRENT OCCUPANT	234 ATLANTIC AVE	SUNNY ISLES BEACH	FL	33160
31-2214-003-1360	GEORGE & DIONE SCHOLL	OR CURRENT OCCUPANT	334 ATLANTIC AVE	MIAMI	FL	33160-4515
31-2214-003-0670	GREGORY KORCHMAR	OR CURRENT OCCUPANT	294 ATLANTIC AVE	SUNNY ISLE	FL	33160
31-2214-003-0470	GUSTAVO ALBERTO Q G DE SOUZA	OR CURRENT OCCUPANT	323 ATLANTIC ISLE	SUNNY ISLES BEACH	FL	33160

## Appendix A - Property Owners

31-2214-003-0570	HECTOR & ANA ORTIZ	OR CURRENT OCCUPANT	320 ATLANTIC AVE	MIAMI	FL	33160
31-2214-003-0090	HECTOR P ORTIZ	OR CURRENT OCCUPANT	231 ATLANTIC AVE	MIAMI	FL	33160
31-2214-003-0730	HUMBERTO C ORTIZ	OR CURRENT OCCUPANT	278 ATLANTIC AVE	SUNNY ISLES	FL	33160
31-2214-003-0390	ISIDRO R LEZCANO	OR CURRENT OCCUPANT	299 ATLANTIC AVE	SUNNY ISLES	FL	33160
31-2214-003-0990	JOHN J CAMPBELL JR	OR CURRENT OCCUPANT	214 ATLANTIC AVE	MIAMI BEACH	FL	33160
31-2214-003-0790	JUDITH STEIGER	OR CURRENT OCCUPANT	262 ATLANTIC ISLES	NORTH MIAMI BEACH	FL	33160
31-2214-003-0400	JULIAN & VIVENCIA ACOSTA	OR CURRENT OCCUPANT	303 ATLANTIC AVE	MIAMI	FL	33160-4502
31-2214-003-0850	JURGEN EUGEN EISELE	OR CURRENT OCCUPANT	250 ATLANTIC AVE	SUNNY ISLES BEACH	FL	33160
31-2214-003-0220	LUIS BENITEZ	OR CURRENT OCCUPANT	255 ATLANTIC ISLE	NORTH MIAMI BEACH	FL	33160
31-2214-003-0250	LUIS URBINA & FLOR TERRASA	OR CURRENT OCCUPANT	263 ATLANTIC AVE	NORTH MIAMI BEACH	FL	33160
31-2214-003-0200	MARTIN & PAULINE HOLL&	OR CURRENT OCCUPANT	251 ATLANTIC ISLE	MIAMI BEACH	FL	33160-4501
31-2214-003-0280	MATHIEU BERGERON	OR CURRENT OCCUPANT	273 ATLANTIC AVE	SUNNY ISLES BEACH	FL	33160
31-2214-003-0170	MB 2013	OR CURRENT OCCUPANT	767 5 AVE #4700	NEW YORK	NY	10153
31-2214-003-1352	MIAMI DADE COUNTY	OR CURRENT OCCUPANT	3071 SW 38 AVE	MIAMI	FL	33146
31-2214-003-0530	MILANA NOSIKOVSKY	OR CURRENT OCCUPANT	333 ATLANTIC AVE	SUNNY ISLES BEACH	FL	33160
31-2214-003-0060	NISSIM SABAG	OR CURRENT OCCUPANT	215 ATLANTIC AVE	MIAMI	FL	33160-4501
31-2214-003-0460	NORMA CINTADO	OR CURRENT OCCUPANT	319 ATLANTIC AVE	SUNNY ISLES BEACH	FL	33160-4502
31-2214-003-0890	NORMAN S EDELCPUP	OR CURRENT OCCUPANT	244 ATLANTIC AVE	MIAMI	FL	33160-4516
31-2214-003-0560	OLEG SHANDAR	OR CURRENT OCCUPANT	326 ATLANTIC AVE	SUNNY ISLES BEACH	FL	33160
31-2214-003-0620	OXI HOLDINGS II INC	OR CURRENT OCCUPANT	4045 SHERIDAN AVE #322	MIAMI BEACH	FL	33140
31-2214-003-1020	PATRICIA I DAVIS	OR CURRENT OCCUPANT	200 ATLANTIC ISLE	NORTH MIAMI BEACH	FL	33160
31-2214-003-0320	RAUL RODRIGUEZ	OR CURRENT OCCUPANT	279 ATLANTIC AVE	SUNNY ISLES	FL	33160
31-2214-003-0590	RICHARD & LORETTA MUFSON	OR CURRENT OCCUPANT	310 ATLANTIC AVE	MIAMI	FL	33160-4515
31-2214-003-0510	RT ADVISORY TEAM	OR CURRENT OCCUPANT	102 BEAUMONT ST	BROOKLYN	NY	11235
31-2214-003-0690	STEPHANIE BALAZS	OR CURRENT OCCUPANT	288 ATLANTIC AVE	MIAMI	FL	33160
31-2214-003-0650	SUNKOLED INC	OR CURRENT OCCUPANT	300 ATLANTIC AVE	SUNNY ISLES BEACH	FL	33160
31-2214-003-1015	SUSAN SPILLOTIS	OR CURRENT OCCUPANT	210 ATLANTIC AVE	MIAMI	FL	33160
31-2214-003-0700	THOMAS A SESSA	OR CURRENT OCCUPANT	282 ATLANTIC ISLES	SUNNY ISLES	FL	33160-4528
31-2214-003-0330	THOMAS & CHRISTINA O'CONNELL	OR CURRENT OCCUPANT	283 ATLANTIC ISLE DR	MIAMI	FL	33160-4527
31-2214-003-0180	TICKHILL INVESTMENTS LTD	OR CURRENT OCCUPANT	16485 COLLINS AVE #2334	SUNNY ISLES BEACH	FL	33160
31-2214-003-0230	VICTOR & LOURDES CRUZ	OR CURRENT OCCUPANT	15103 TATENSHALL TRAIL	SOUTHWEST RANCHES	FL	33331
31-2214-003-0360	ZORI HAYON	OR CURRENT OCCUPANT	291 ATLANTIC AVE	SUNNY ISLES BEACH	FL	33160

## Appendix B - ETAT Contacts

Title	Name	Letter Greeting	Envelope Greeting	Agency	Street Address	City	FL	ZIP	Phone	Email
Ms.	Lindsay S Rothrock	Ms. Rothrock	Ms. Lindsay S Rothrock	Florida Department of State, Division of Historical Resources	500 South Bronough Street 4th Floor	Tallahassee	FL	32399	850-245-6307	<a href="mailto:lindsay.rothrock@dos.myflorida.com">lindsay.rothrock@dos.myflorida.com</a>
Mr.	Jason Aldridge	Mr. Aldridge	Mr. Jason Aldridge	Florida Department of State, Division of Historical Resources	500 South Bronough Street 4th Floor	Tallahassee	FL	32399	850-245-6344	<a href="mailto:Jason.Aldridge@dos.myflorida.com">Jason.Aldridge@dos.myflorida.com</a>
Ms.	Alyssa McManus	Ms. McManus	Ms. Alyssa McManus	Florida Department of State, Division of Historical Resources	500 South Bronough Street 4th Floor	Tallahassee	FL	32399	850-245-6368	<a href="mailto:alysa.mcmanus@dos.myflorida.com">alysa.mcmanus@dos.myflorida.com</a>
Ms.	Adrienne Daggett	Ms. Daggett	Ms. Adrienne Daggett	Florida Department of State, Division of Historical Resources	500 South Bronough Street 4th Floor	Tallahassee	FL	32399	850-245-6372	<a href="mailto:Adrienne.Daggett@dos.myflorida.com">Adrienne.Daggett@dos.myflorida.com</a>
Mr.	Mark Kiser	Mr. Kiser	Mr. Mark Kiser	Florida Department of Agriculture and Consumer Services	3125 Conner Blvd, Suite 257	Tallahassee	FL	32399	850-681-5885	<a href="mailto:Mark.Kiser@fdacs.gov">Mark.Kiser@fdacs.gov</a>
Mr.	Chris Stahl	Mr. Stahl	Mr. Chris Stahl	Florida Department of Environmental Protection	3900 Commonwealth Blvd, Mail Station 47	Tallahassee	FL	32399	850-717-9076	<a href="mailto:Chris.Stahl@FloridaDEP.gov">Chris.Stahl@FloridaDEP.gov</a>
Ms.	Jennifer Goff	Ms. Goff	Ms. Jennifer Goff	Florida Department of Fish and Wildlife Conservation Commission	620 S. Meridian St	Tallahassee	FL	32399	850-488-3831	<a href="mailto:jennifer.goff@MyFWC.com">jennifer.goff@MyFWC.com</a>
Mr.	Jason Hight	Mr. Hight	Mr. Jason Hight	Florida Department of Fish and Wildlife Conservation Commission	620 South Meridian St MSSB5	Tallahassee	FL	32399	850-413-6966	<a href="mailto:Jason.Hight@MyFWC.com">Jason.Hight@MyFWC.com</a>
Mr.	Matt Preston	Mr. Preston	Mr. Matt Preston	Florida Department of Economic Opportunity	7400 SW 87th Avenue, Suite 270	Miami	FL	33173	305-596-4224	<a href="mailto:matt.preston@deo.myflorida.com">matt.preston@deo.myflorida.com</a>
Mr.	Stan Mitchell	Mr. Mitchell	Mr. Stan Mitchell	Federal Transit Administration	230 Peachtree St NW, Suite 800	Atlanta	GA	30327	404-865-5643	<a href="mailto:stanley.a.mitchell@dot.gov">stanley.a.mitchell@dot.gov</a>
Mr.	Andrew A Kizlauskas	Mr. Kizlauskas	Mr. Andrew A Kizlauskas	U.S. Army Corps of Engineers	415 Richard Jackson Blvd, Suite 411	Panama City Beach	FL	32407	904-304-9095	<a href="mailto:andrew.a.kizlauskas@usace.army.mil">andrew.a.kizlauskas@usace.army.mil</a>
Ms.	Jennifer Zercher	Ms. Zercher	Ms. Jennifer Zercher	U.S. Coast Guard	909 SE 1st Avenue, Suite 432	Miami	FL	33131	305-415-6740	<a href="mailto:Jennifer.N.Zercher@uscg.mil">Jennifer.N.Zercher@uscg.mil</a>
Ms.	Anita Barnett	Ms. Barnett	Ms. Anita Barnett	U.S. Department of Interior - National Park Service	100 Alabama Street, 1924 Building	Atlanta	GA	30303	404-507-5706	<a href="mailto:anita_barnett@nps.gov">anita_barnett@nps.gov</a>
Mr.	John Wrublik	Mr. Wrublik	Mr. John Wrublik	U.S. Department of Interior - U.S. Fish and Wildlife Service	1339 20th Street	Vero Beach	FL	32960	772-469-4282	<a href="mailto:john_wrublik@fws.gov">john_wrublik@fws.gov</a>
Ms.	Jennifer Schull	Ms. Schull	Ms. Jennifer Schull	U.S. Department of Commerce - National Marine Fisheries Service	400 N. Congress Avenue, Suite 270	West Palm Beach	FL	33401	561-440-1748	<a href="mailto:Jennifer.Schull@noaa.gov">Jennifer.Schull@noaa.gov</a>
Ms.	Alya Singh-White	Ms. Singh-White	Ms. Alya Singh-White	U.S. Environmental Protection Agency	61 Forsyth Street SW	Atlanta	GA	30303	404-562-9339	<a href="mailto:Singh-White.Alya@epa.gov">Singh-White.Alya@epa.gov</a>
Ms.	Amanetta Somerville	Ms. Somerville	Ms. Amanetta Somerville	U.S. Environmental Protection Agency	61 Forsyth Street SW	Atlanta	GA	30303	404-562-9025	<a href="mailto:somerville.amanetta@epa.gov">somerville.amanetta@epa.gov</a>
	Roshanna White	Ms. White	Ms. Roshanna White	U.S. Environmental Protection Agency	61 Forsyth Street SW	Atlanta	GA	30303	404-562-9035	<a href="mailto:White.Roshanna@epa.gov">White.Roshanna@epa.gov</a>
Ms.	Ntale Kajumba	Ms. Kajumba	Ms. Ntale Kajumba	U.S. Environmental Protection Agency	61 Forsyth Street SW	Atlanta	GA	30303	404-562-9620	<a href="mailto:Kajumba.Ntale@epamail.epa.gov">Kajumba.Ntale@epamail.epa.gov</a>

## Sociocultural Data Report

### ETDM #14413 - Alternative #1

**Area:** 0.031 square miles  
**Jurisdiction(s):** **Cities:** Sunny Isles Beach  
**Counties:** Miami-dade

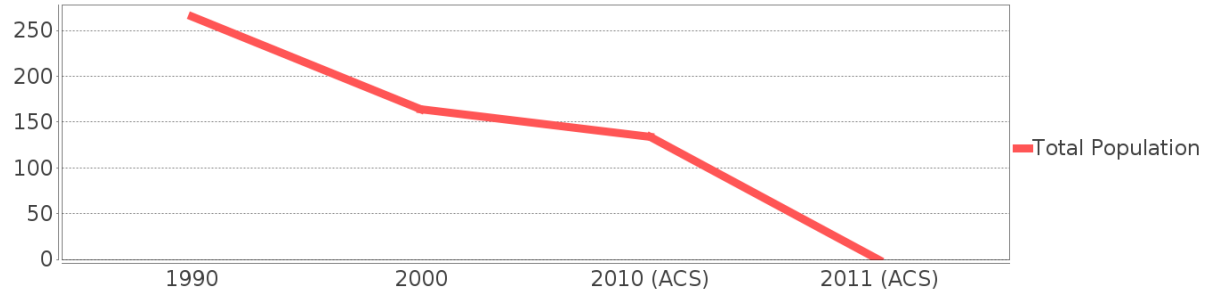
### General Population Trends

Description	1990	2000	2010 (ACS)	2011 (ACS)
Total Population	265	164	134	NA
Total Households	152	94	58	NA
Average Persons per Acre	32.70	14.39	13.62	NA
Average Persons per Household	1.74	1.75	2.00	NA
Average Persons per Family	2.47	2.47	3.00	NA
Males	111	74	69	NA
Females	155	90	66	NA

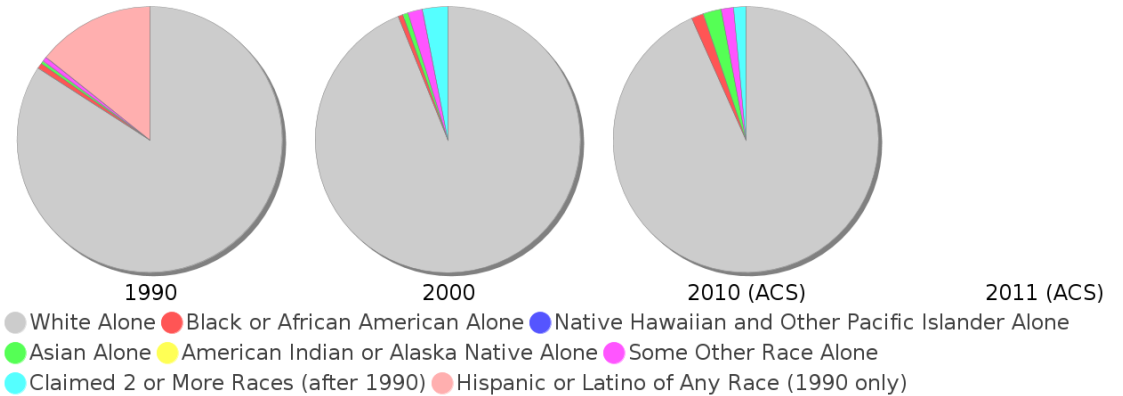
### Race and Ethnicity Trends

Description	1990	2000	2010 (ACS)	2011 (ACS)
White Alone	259 (97.74%)	154 (93.90%)	125 (93.28%)	NA (NA)
Black or African American Alone	2 (0.75%)	1 (0.61%)	2 (1.49%)	NA (NA)
Native Hawaiian and Other Pacific Islander Alone	0 (0.00%)	0 (0.00%)	0 (0.00%)	NA (NA)
Asian Alone	1 (0.38%)	1 (0.61%)	3 (2.24%)	NA (NA)
American Indian or Alaska Native Alone	0 (0.00%)	0 (0.00%)	0 (0.00%)	NA (NA)
Some Other Race Alone	2 (0.75%)	3 (1.83%)	2 (1.49%)	NA (NA)
Claimed 2 or More Races	NA (NA)	5 (3.05%)	2 (1.49%)	NA (NA)
Hispanic or Latino of Any Race	44 (16.60%)	57 (34.76%)	46 (34.33%)	NA (NA)
Not Hispanic or Latino	221 (83.40%)	107 (65.24%)	88 (65.67%)	NA (NA)
Minority	48 (18.11%)	63 (38.41%)	53 (39.55%)	NA (NA)

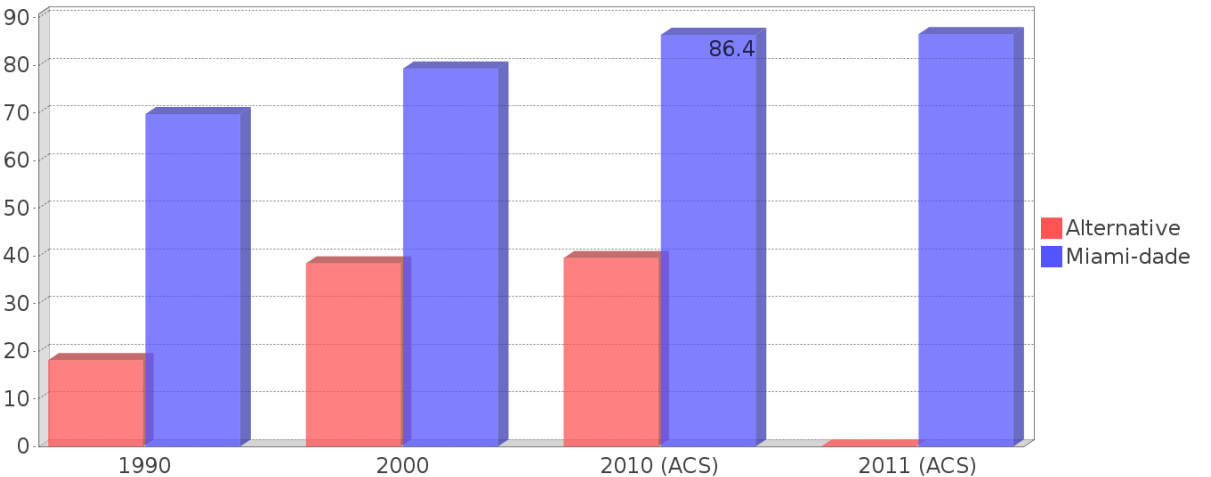
### Population



### Race



### Minority Percentage Population

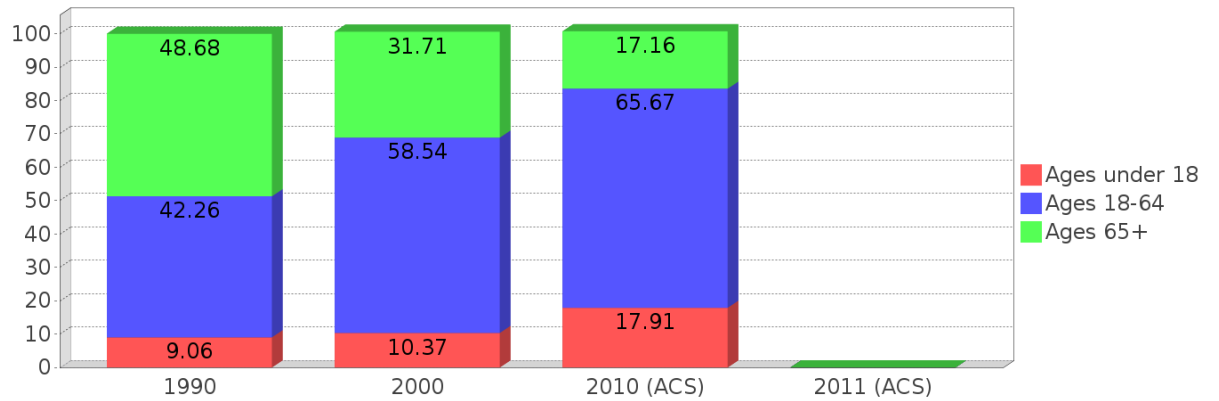




### Age Trends

Description	1990	2000	2010 (ACS)	2011 (ACS)
Under Age 5	2.64%	3.66%	4.48%	NA
Ages 5-17	6.42%	6.71%	13.43%	NA
Ages 18-21	1.89%	1.83%	3.73%	NA
Ages 22-29	6.79%	5.49%	8.21%	NA
Ages 30-39	9.43%	16.46%	10.45%	NA
Ages 40-49	9.06%	14.02%	16.42%	NA
Ages 50-64	15.09%	20.73%	26.87%	NA
Age 65 and Over	48.68%	31.71%	17.16%	NA
-Ages 65-74	18.11%	12.20%	11.94%	NA
-Ages 75-84	23.40%	10.98%	3.73%	NA
-Age 85 and Over	7.17%	9.15%	1.49%	NA
Median Age	NA	52	47	NA

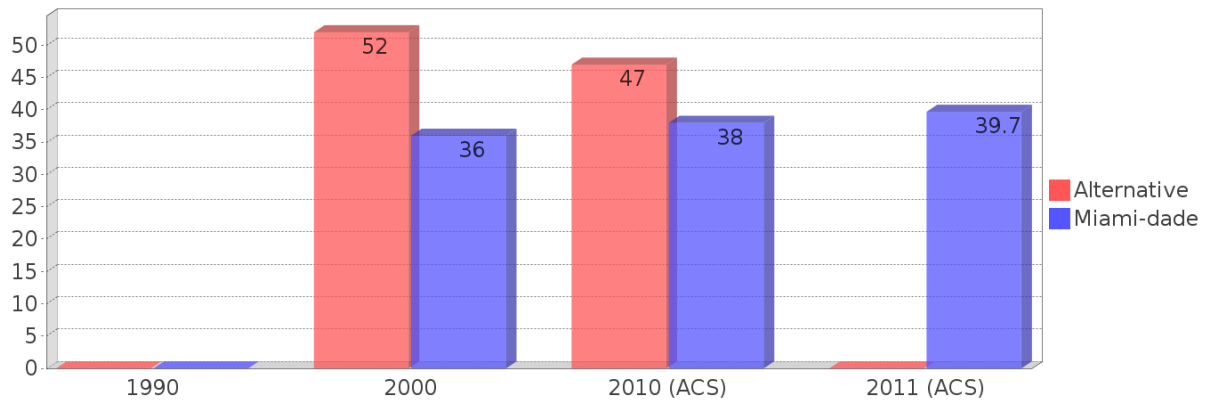
Percentage Population by Age Group



### Income Trends

Description	1990	2000	2010 (ACS)	2011 (ACS)
Median Household Income	\$24,304	\$35,048	\$128,571	NA
Median Family Income	\$31,202	\$42,583	\$128,080	NA
Population below Poverty Level	9.43%	12.80%	0.00%	NA
Households below Poverty Level	13.16%	12.77%	0.00%	NA
Households with Public Assistance Income	5.26%	1.06%	0.00%	NA

Median Age Comparison

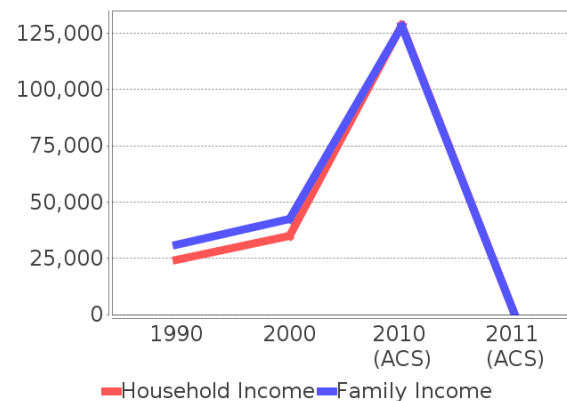


### Disability Trends

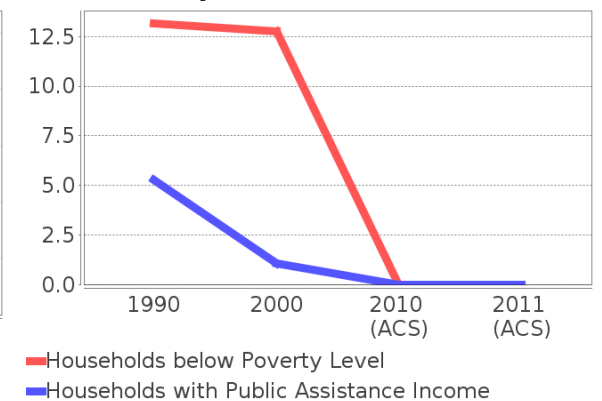
See the Data Sources section below for an explanation about the differences in disability data among the various years.

Description	1990	2000	2010 (ACS)	2011 (ACS)
Population 16 To 64 Years with a disability	5 (2.03%)	17 (10.76%)	(NA)	(NA)
Population 20 To 64 Years with a disability				

Income Trends



Poverty and Public Assistance



## Educational Attainment Trends

Age 25 and Over

Description	1990	2000	2010 (ACS)	2011 (ACS)
Less than 9th Grade	19 (8.09%)	8 (5.67%)	0 (0.00%)	NA (NA)
9th to 12th Grade, No Diploma	29 (12.34%)	21 (14.89%)	0 (0.00%)	NA (NA)
High School Graduate or Higher	187 (79.57%)	113 (80.14%)	164 (100.00%)	NA (NA)
Bachelor's Degree or Higher	40 (17.02%)	43 (30.50%)	66 (40.24%)	NA (NA)

## Language Trends

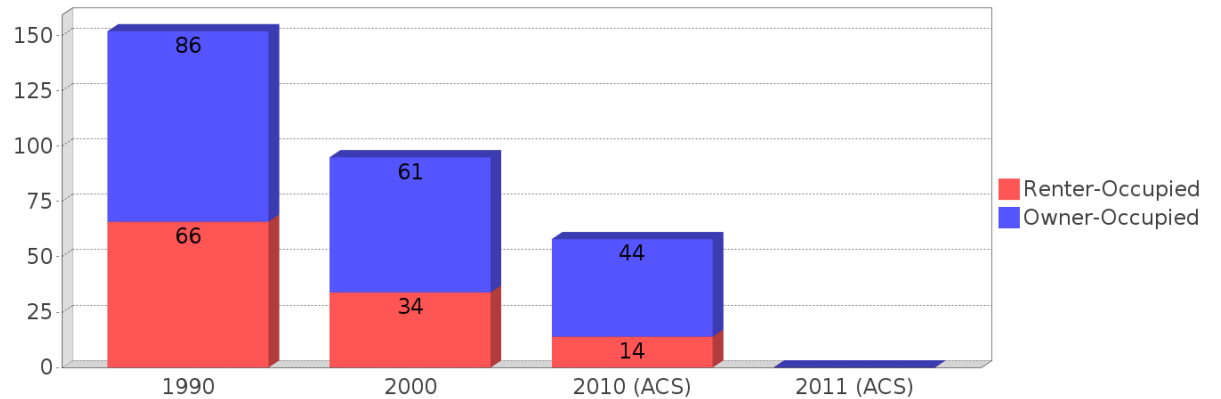
Age 5 and Over

Description	1990	2000	2010 (ACS)	2011 (ACS)
Speaks English Well	26 (10.08%)	22 (13.92%)	17 (10.37%)	NA (NA)
Speaks English Not Well	NA (NA)	16 (10.13%)	3 (1.83%)	NA (NA)
Speaks English Not at All	NA (NA)	3 (1.90%)	0 (0.00%)	NA (NA)
Speaks English Not Well or Not at All	12 (4.65%)	19 (12.03%)	3 (1.83%)	0 (NA)

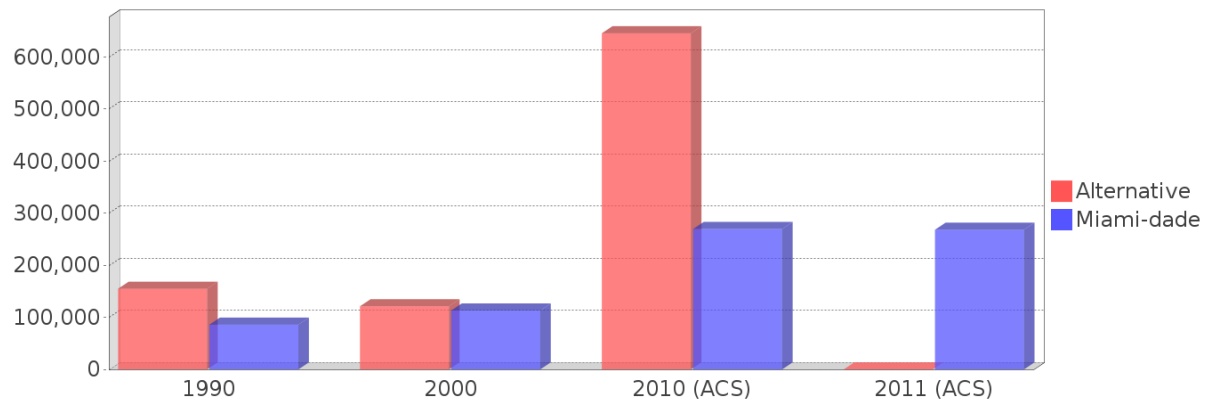
## Housing Trends

Description	1990	2000	2010 (ACS)	2011 (ACS)
Total	248	166	147	NA
Units per Acre	30.52	14.61	14.95	NA
Single-Family Units	13	9	41	NA
Multi-Family Units	133	158	133	NA
Mobile Home Units	0	0	0	NA
Owner-Occupied Units	86	61	44	NA
Renter-Occupied Units	66	34	14	NA
Vacant Units	95	72	89	NA
Median Housing Value	\$154,900	\$121,200	\$645,400	NA
Occupied Housing Units w/No Vehicle	42 (27.45%)	18 (19.15%)	12 (20.69%)	NA (NA)

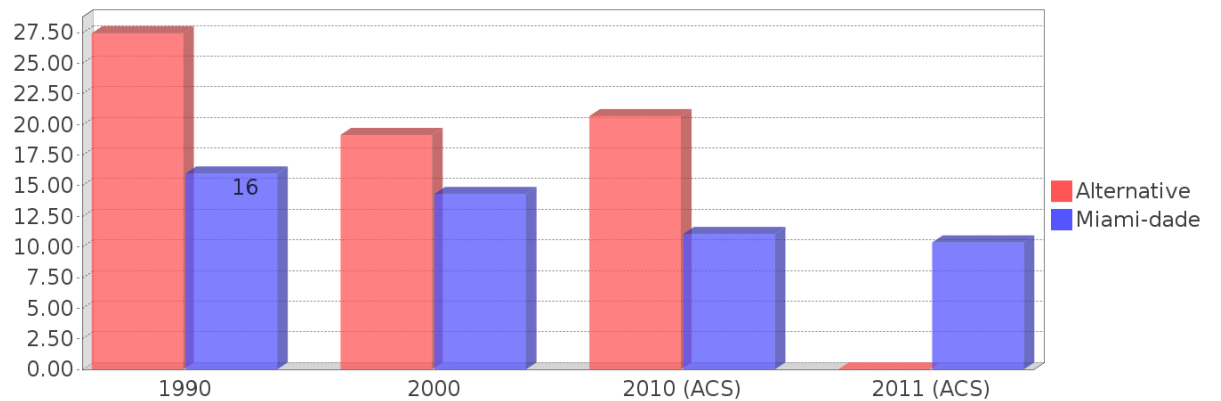
## Housing Tenure



## Median Housing Value Comparison

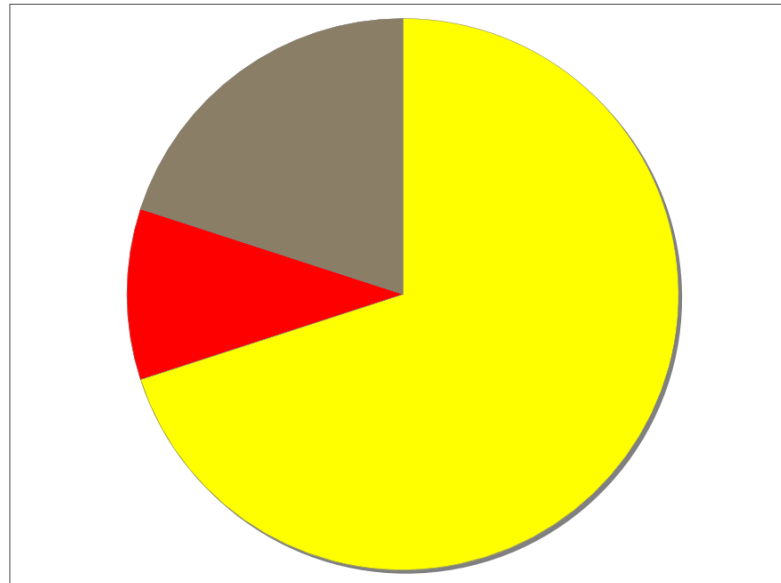


## Occupied Units With No Vehicles Available



## Existing Land Use

Land Use Type	Acres	Percentage
Acreage Not Zoned For Agriculture	0	0.00%
Agricultural	0	0.00%
Centrally Assessed	0	0.00%
Industrial	0	0.00%
Institutional	0	0.00%
Mining	0	0.00%
Other	0	0.00%
Public/Semi-Public	<0.5	<2.53%
Recreation	<0.5	<2.53%
Residential	7	35.47%
Retail/Office	1	5.07%
Row	0	0.00%
Vacant Residential	2	10.13%
Vacant Nonresidential	0	0.00%
Water	0	0.00%
Parcels With No Values	<0.5	<2.53%



- Acreage Not Zoned For Agriculture
- Agricultural
- Centrally Assessed
- Industrial
- Institutional
- Mining
- Other
- Public/Semi-Public
- Recreation
- Residential
- Retail/Office
- Row
- Vacant Residential
- Vacant Nonresidential
- Water
- Parcels With No Values

## Location Maps

No Map available

No Map available

---

## Community Facilities

The community facilities information below is useful in a variety of ways for environmental evaluations. These community resources should be evaluated for potential sociocultural effects, such as accessibility and relocation potential. The facility types may indicate the types of population groups present in the project study area. Facility staff and leaders can be sources of community information such as who uses the facility and how it is used. Additionally, community facilities are potential public meeting venues.

None

---

## Block Groups

The following Census Block Groups were used to calculate demographics for this report.

### 1990 Census Block Groups

120250001089

### 2000 Census Block Groups

120860001081

### 2010 Census Block Groups

120860001071

### Census Block Groups

120860001071

---

## Data Sources

### Area

The geographic area of the community based on a user-specified community boundary or area of interest (AOI) boundary.

### Jurisdiction

Jurisdiction(s) includes local government boundaries that intersect the community or AOI boundary.

### Demographic Data

Demographic data reported under the headings General Population Trends, Race and Ethnicity Trends, Age Trends, Income Trends, Educational Attainment Trends, Language Trends, and Housing Trends is from the U.S. Decennial Census (1990, 2000) and the American Community Survey (ACS) 5-year estimates from 2006-2010 and 2007-2011. The data was gathered at the block group level for user-specified community boundaries and AOIs, and at the county level for counties. Depending on the dataset, the data represents 100% counts (Census Summary File 1) or sample-based information (Census Summary File 3 or ACS).

### About the Census Data:

User-specified community boundaries and AOIs do not always correspond precisely to block group boundaries. In these instances, adjustment of the geographic area and data for affected block groups is required to estimate the actual population. To improve the accuracy of such estimates in the SDR report, the census block group data was adjusted to exclude all census blocks with a population of two or fewer. These areas were eliminated from the corresponding years' block groups. Next, the portion of the block group that lies outside of the community or AOI boundary was removed. The demographics within each block group were then recalculated, assuming an equal area distribution of the population. Note that there may be areas where there is no population.

Use caution when comparing the 100% count data (Decennial Census) to the sample-based data (ACS). In any given year, about one in 40 or 2.5% of U.S. households will receive the ACS questionnaire. Over any five-year period, about one in eight households will receive the questionnaire, as compared to about one in six that received the long form questionnaire for the Decennial Census 2000. (Source: <http://mcdc.missouri.edu/pub/data/acs/Readme.shtml>) The U.S. Census Bureau provides help with this process:

<https://www.census.gov/programs-surveys/acs/guidance/comparing-acs-data/2011.html>

Use caution when interpreting changes in Race and Ethnicity over time. Starting with the 2000 Decennial Census, respondents were given a new option of selecting one or more race categories. Also in 2000, the placement of the question about Hispanic origin changed, helping to increase responsiveness to the Hispanic-origin question. Because of these and other changes, the 1990 data on race and ethnicity are not directly comparable with data from later censuses. (Source: <http://www.census.gov/prod/2001pubs/c2kbr01-1.pdf>; <http://www.census.gov/pred/www/rpts/Race%20and%20Ethnicity%20FINAL%20report.pdf>)

The "Minority" calculations are derived from Census and ACS data using both the race and ethnicity responses. On this report, "Minority" refers to individuals who list a race other than White and/or list their ethnicity as Hispanic/Latino. In other words, people who are multi-racial, any single race other than White, or Hispanic/Latino of any race are considered minorities.

Disability data is not included in the 2010 Decennial Census, or the 2006-2010 ACS. This data is available in the 2007-2011 ACS.

Because of changes made to the Census and ACS questions between 1990 and 2011, disability variables should not be compared from year to year. For example: 1) With the 1990 data the disabilities are listed as a "work disability" while this distinction is not made with 2000 or 2011 ACS data; 2) The 2011 ACS data includes the institutionalized population (e.g. persons in prisons and group homes), while this population is not included in 1990 or 2000; 3) the age groupings changed over the years.

Please take the following two concerns into account when viewing this data: 1) With the 1990 data the disabilities are listed as a "work disability" while this distinction is not made with 2000 or 2011 ACS data; 2) The 2011 ACS data includes the institutionalized population (e.g. persons in prisons and group homes), while this population is not included in 1990 or 2000.

The category Bachelor's Degree or Higher under the heading Educational Attainment Trends is a subset of the category High School Graduate or Higher.

Income of households. This includes the income of the householder and all other individuals 15 years old and over in the household, whether they are related to the householder or not. Because many households consist of only one person, average household income is usually less than average family income.

Income of families. In compiling statistics on family income, the incomes of all members 15 years old and over related to the householder are summed and treated as a single amount.

Age Trends median age for 1990 is not available.

### **Land Use Data**

The Land Use information Indicates acreages and percentages for the generalized land use types used to group parcel-specific, existing land use assigned by the county property appraiser office according to the Florida Department of Revenue land use codes.

### **Community Facilities Data**

- Assisted Rental Housing Units - Identifies multifamily rental developments that receive funding assistance under federal, state, and local government programs to offer affordable housing as reported by the Shimberg Center for Housing Studies, University of Florida.
- Mobile Home Parks - Identifies approved or acknowledged mobile home parks reported by the Florida Department of Business and Professional Regulation and Florida Department of Health.
- Migrant Camps - Identifies migrant labor camp facilities inspected by the Florida Department of Health.
- Group Care Facilities - Identifies group care facilities inspected by the Florida Department of Health.

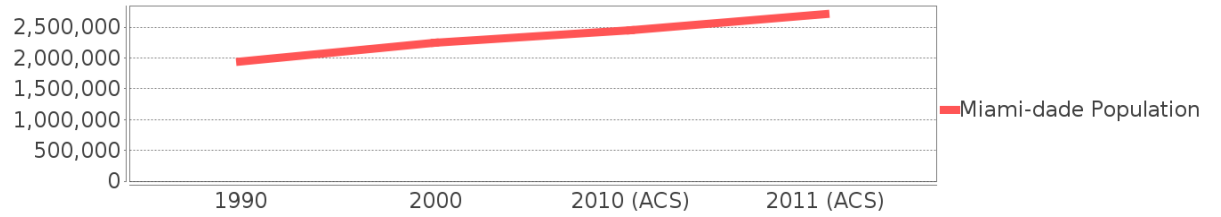
- Community Center and Fraternal Association Facilities - Identifies facilities reported by multiple sources.
- Law Enforcement Correctional Facilities - Identifies facilities reported by multiple sources.
- Cultural Centers - Identifies cultural centers including organizations, buildings, or complexes that promote culture and arts (e.g., aquariums and zoological facilities; arboreta and botanical gardens; dinner theaters; drive-ins; historical places and services; libraries; motion picture theaters; museums and art galleries; performing arts centers; performing arts theaters; planetariums; studios and art galleries; and theater producers stage facilities) reported by multiple sources.
- Fire Department and Rescue Station Facilities - Identifies facilities reported by multiple sources.
- Government Buildings - Identifies local, state, and federal government buildings reported by multiple sources.
- Health Care Facilities - Identifies health care facilities including abortion clinics, dialysis clinics, medical doctors, nursing homes, osteopaths, state laboratories/clinics, and surgicenters/walk-in clinics reported by the Florida Department of Health.
- Hospital Facilities - Identifies hospital facilities reported by multiple sources.
- Law Enforcement Facilities - Identifies law enforcement facilities reported by multiple sources.
- Parks and Recreational Facilities - Identifies parks and recreational facilities reported by multiple sources.
- Religious Center Facilities - Identifies religious centers including churches, temples, synagogues, mosques, chapels, centers, and other types of religious facilities reported by multiple sources.
- Private and Public Schools - Identifies private and public schools reported by multiple sources.
- Social Service Centers - Identifies social service centers reported by multiple sources.
- Veteran Organizations and Facilities

# Miami-dade County Demographic Profile

## General Population Trends - Miami-dade

Description	1990	2000	2010 (ACS)	2018 (ACS)
Total Population	1,937,094	2,253,362	2,445,374	2,715,516
Total Households	692,355	776,774	827,556	870,051
Average Persons per Acre	1.528	1.774	1.925	2.14
Average Persons per Household	2.798	2.84	3.00	3.07
Average Persons per Family	3.413	3.488	3.591	3.88
Males	928,411	1,086,558	1,182,784	1,318,627
Females	1,008,683	1,166,804	1,262,590	1,396,889

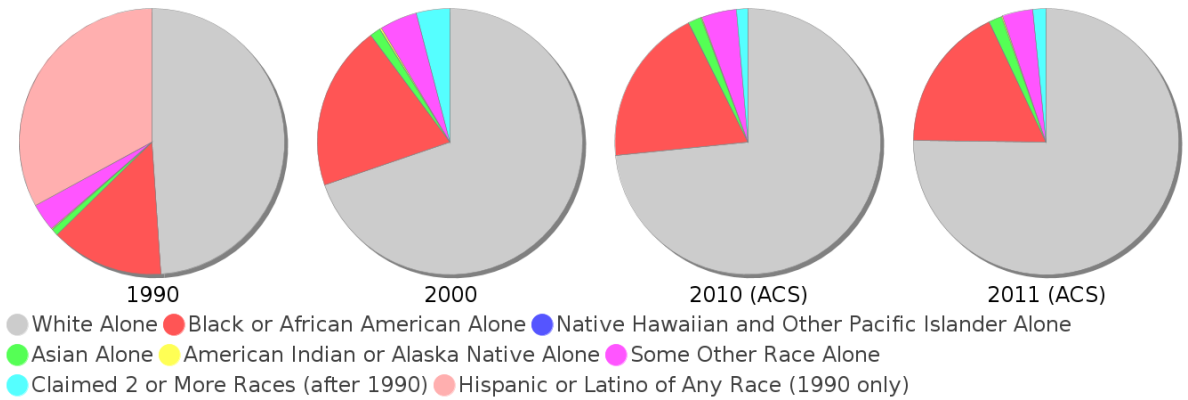
Miami-dade County Population



## Race and Ethnicity Trends - Miami-dade

Description	1990	2000	2010 (ACS)	2018 (ACS)
White Alone	1,413,015 (72.95%)	1,570,990 (69.72%)	1,794,730 (73.39%)	2,041,796 (75.19%)
Black or African American Alone	397,993 (20.55%)	452,333 (20.07%)	470,326 (19.23%)	481,976 (17.75%)
Native Hawaiian and Other Pacific Islander Alone	(NA)	605 (0.03%)	649 (0.03%)	751 (0.03%)
Asian Alone	25,869 (1.34%)	30,692 (1.36%)	38,813 (1.59%)	43,289 (1.59%)
American Indian or Alaska Native Alone	3,066 (0.16%)	4,841 (0.21%)	3,572 (0.15%)	4,668 (0.17%)
Some Other Race Alone	96,713 (4.99%)	102,436 (4.55%)	102,938 (4.21%)	100,332 (3.69%)
Claimed 2 or More Races	(NA)	91,465 (4.06%)	34,346 (1.40%)	42,704 (1.57%)
Hispanic or Latino of Any Race	953,407 (49.22%)	1,291,681 (57.32%)	1,565,410 (64.02%)	1,845,646 (67.97%)
Not Hispanic or Latino	983,687 (50.78%)	961,681 (42.68%)	879,964 (35.98%)	869,870 (32.03%)
Minority	1,351,487 (69.77%)	1,787,468 (79.32%)	2,112,884 (86.40%)	2,350,385 (86.55%)

Miami-dade County Race

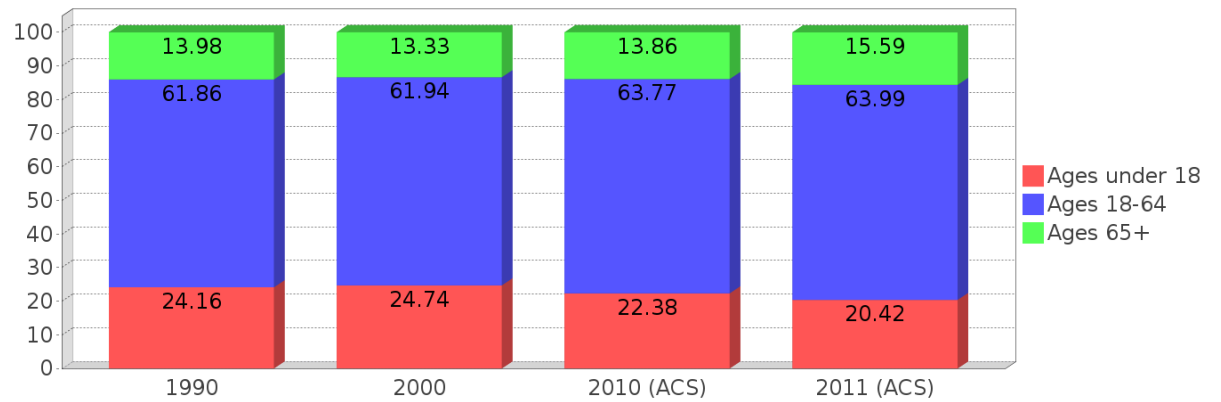




### Age Trends - Miami-dade

Description	1990	2000	2010 (ACS)	2018 (ACS)
Under Age 5	7.21%	6.43%	6.20%	5.80%
Ages 5-17	16.95%	18.31%	16.18%	14.62%
Ages 18-21	5.60%	5.24%	5.83%	4.97%
Ages 22-29	13.10%	10.97%	10.98%	11.07%
Ages 30-39	16.06%	16.33%	14.14%	13.88%
Ages 40-49	12.47%	14.49%	15.67%	14.52%
Ages 50-64	14.63%	14.90%	17.15%	19.55%
Age 65 and Over	13.98%	13.33%	13.86%	15.59%
-Ages 65-74	7.54%	7.23%	7.34%	8.33%
-Ages 75-84	4.88%	4.41%	4.71%	4.99%
-Age 85 and Over	1.55%	1.69%	1.81%	2.26%
Median Age	NA	36	38	39.7

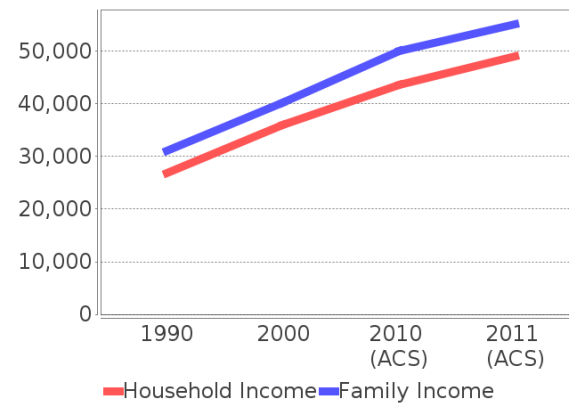
Percentage Population by Age Group - Miami-dade



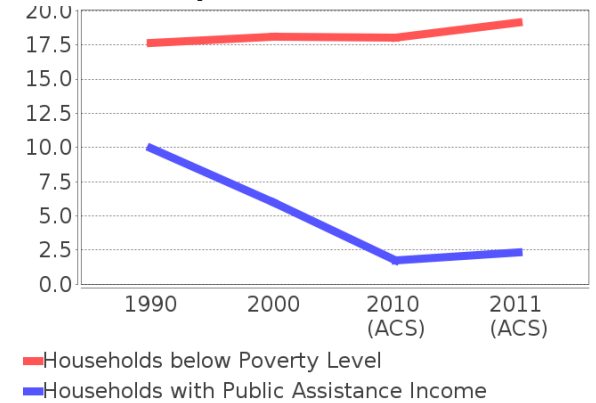
### Income Trends - Miami-dade

Description	1990	2000	2010 (ACS)	2018 (ACS)
Median Household Income	\$26,909	\$35,966	\$43,605	\$48,982
Median Family Income	\$31,113	\$40,260	\$50,065	\$55,111
Population below Poverty Level	17.94%	17.97%	17.18%	18.04%
Households below Poverty Level	17.62%	18.10%	18.02%	19.14%
Households with Public Assistance Income	9.96%	6.01%	1.74%	2.36%

Income Trends



Poverty and Public Assistance



### Disability Trends - Miami-dade

See the Data Sources section below for an explanation about the differences in disability data among the various years.

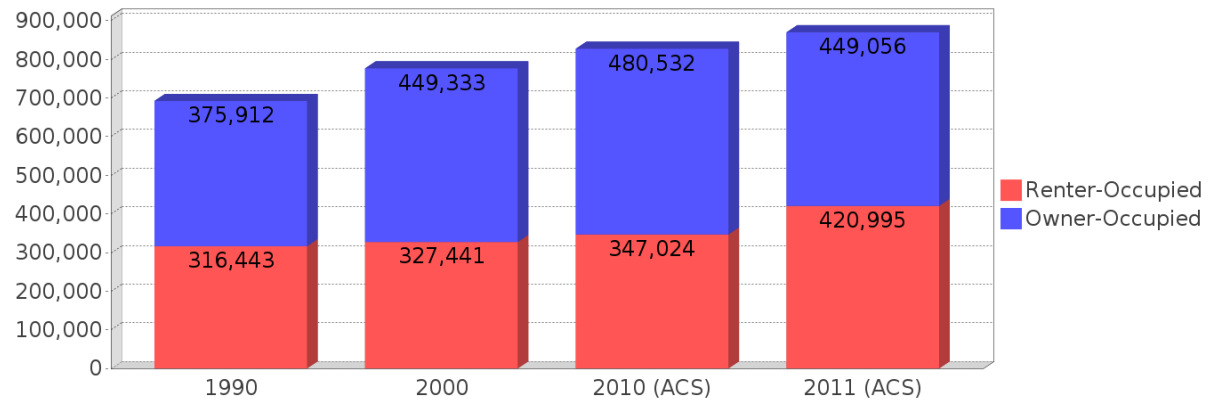
Description	1990	2000	2010 (ACS)	2018 (ACS)
Population 16 To 64 Years with a disability	78,949 (5.28%)	324,062 (15.60%)	NA (NA)	NA (NA)
Population 20 To 64 Years with a disability	NA (NA)	NA (NA)	NA (NA)	112,608 (6.81%)

## Educational Attainment Trends - Miami-dade

Age 25 and Over

Description	1990	2000	2010 (ACS)	2018 (ACS)
Less than 9th Grade	228,426 (17.83%)	219,066 (14.68%)	202,413 (12.23%)	191,214 (9.94%)
9th to 12th Grade, No Diploma	219,856 (17.16%)	260,287 (17.45%)	178,335 (10.77%)	164,661 (8.56%)
High School Graduate or Higher	833,013 (65.01%)	1,012,436 (67.87%)	1,274,809 (77.00%)	1,566,993 (81.49%)
Bachelor's Degree or Higher	240,460 (18.77%)	323,399 (21.68%)	434,574 (26.25%)	553,997 (28.81%)

## Housing Tenure - Miami-dade



## Language Trends - Miami-dade

Age 5 and Over

Description	1990	2000	2010 (ACS)	2018 (ACS)
Speaks English Well	221,943 (12.34%)	285,783 (13.55%)	302,397 (13.18%)	333,962 (13.06%)
Speaks English Not Well	NA	261,782 (12.42%)	294,777 (12.85%)	321,520 (12.57%)
Speaks English Not at All	NA	184,249 (8.74%)	217,650 (9.49%)	234,290 (9.16%)
Speaks English Not Well or Not at All	341,005 (18.96%)	446,031 (21.15%)	512,427 (22.34%)	555,810 (21.73%)

## Housing Trends - Miami-dade

Description	1990	2000	2010 (ACS)	2018 (ACS)
Total	771,288	852,278	980,580	1,016,653
Units per Acre	0.608	0.671	0.772	0.80
Single-Family Units	365,600	448,569	508,364	504,591
Multi-Family Units	301,870	387,550	457,465	498,644
Mobile Home Units	15,359	15,338	14,234	13,070
Owner-Occupied Units	375,912	449,333	480,532	449,056
Renter-Occupied Units	316,443	327,441	347,024	420,995
Vacant Units	78,933	75,504	153,024	146,602
Median Housing Value	\$86,000	\$113,200	\$269,600	\$268,200
Occupied Housing Units w/No Vehicle	110,809 (16.00%)	111,323 (14.33%)	91,558 (11.06%)	90,236 (10.37%)

---

## County Data Sources

Demographic data reported is from the U.S. Decennial Census (1990, 2000) and the American Community Survey (ACS) 5-year estimates from 2006-2010 and 2007-2011. The data was gathered at the county level. Depending on the dataset, the data represents 100% counts (Census Summary File 1) or sample-based information (Census Summary File 3 or ACS).

### About the Census Data:

Use caution when comparing the 100% count data (Decennial Census) to the sample-based data (ACS). In any given year, about one in 40 or 2.5% of U.S. households will receive the ACS questionnaire. Over any five-year period, about one in eight households will receive the questionnaire, as compared to about one in six that received the long form questionnaire for the Decennial Census 2000. (Source: <http://mcdc.missouri.edu/pub/data/acs/Readme.shtml>) The U.S. Census Bureau provides help with this process:

<https://www.census.gov/programs-surveys/acs/guidance/comparing-acs-data/2011.html>

Use caution when interpreting changes in Race and Ethnicity over time. Starting with the 2000 Decennial Census, respondents were given a new option of selecting one or more race categories. Also in 2000, the placement of the question about Hispanic origin changed, helping to increase responsiveness to the Hispanic-origin question. Because of these and other changes, the 1990 data on race and ethnicity are not directly comparable with data from later censuses. (Source: <http://www.census.gov/prod/2001pubs/c2kbr01-1.pdf>;  
<http://www.census.gov/pred/www/rpts/Race%20and%20Ethnicity%20FINAL%20report.pdf>)

The "Minority" calculations are derived from Census and ACS data using both the race and ethnicity responses. On this report, "Minority" refers to individuals who list a race other than White and/or list their ethnicity as Hispanic/Latino. In other words, people who are multi-racial, any single race other than White, or Hispanic/Latino of any race are considered minorities.

Disability data is not included in the 2010 Decennial Census, or the 2006-2010 ACS. This data is available in the 2007-2011 ACS.

Because of changes made to the Census and ACS questions between 1990 and 2011, disability variables should not be compared from year to year. For example: 1) With the 1990 data the disabilities are listed as a "work disability" while this distinction is not made with 2000 or 2011 ACS data; 2) The 2011 ACS data includes the institutionalized population (e.g. persons in prisons and group homes), while this population is not included in 1990 or 2000; 3) the age groupings changed over the years.

Please take the following two concerns into account when viewing this data: 1) With the 1990 data the disabilities are listed as a "work disability" while this distinction is not made with 2000 or 2011 ACS data; 2) The 2011 ACS data includes the institutionalized population (e.g. persons in prisons and group homes), while this population is not included in 1990 or 2000.

source:

<https://www.census.gov/people/disability/methodology/acs.html>

<https://www.census.gov/population/www/cen2000/90vs00/index.html>

The category Bachelor's Degree or Higher under the heading Educational Attainment Trends is a subset of the category High School Graduate or Higher.

---

## Metadata

- Community and Fraternal Centers [https://etdmpub.florida.gov/metadata/gc\\_communitycenter.htm](https://etdmpub.florida.gov/metadata/gc_communitycenter.htm)
- Correctional Facilities in Florida [https://etdmpub.florida.gov/metadata/gc\\_correctional.htm](https://etdmpub.florida.gov/metadata/gc_correctional.htm)
- Cultural Centers in Florida [https://etdmpub.florida.gov/metadata/gc\\_culturecenter.htm](https://etdmpub.florida.gov/metadata/gc_culturecenter.htm)
- Fire Department and Rescue Station Facilities in Florida [https://etdmpub.florida.gov/metadata/gc\\_firestat.htm](https://etdmpub.florida.gov/metadata/gc_firestat.htm)
- Local, State, and Federal Government Buildings in Florida [https://etdmpub.florida.gov/metadata/gc\\_govbuild.htm](https://etdmpub.florida.gov/metadata/gc_govbuild.htm)
- Florida Health Care Facilities [https://etdmpub.florida.gov/metadata/gc\\_health.htm](https://etdmpub.florida.gov/metadata/gc_health.htm)
- Hospital Facilities in Florida [https://etdmpub.florida.gov/metadata/gc\\_hospitals.htm](https://etdmpub.florida.gov/metadata/gc_hospitals.htm)
- Law Enforcement Facilities in Florida [https://etdmpub.florida.gov/metadata/gc\\_lawenforce.htm](https://etdmpub.florida.gov/metadata/gc_lawenforce.htm)
- Florida Parks and Recreational Facilities [https://etdmpub.florida.gov/metadata/gc\\_parks.htm](https://etdmpub.florida.gov/metadata/gc_parks.htm)
- Religious Centers [https://etdmpub.florida.gov/metadata/gc\\_religion.htm](https://etdmpub.florida.gov/metadata/gc_religion.htm)
- Florida Public and Private Schools [https://etdmpub.florida.gov/metadata/gc\\_schools.htm](https://etdmpub.florida.gov/metadata/gc_schools.htm)
- Social Service Centers [https://etdmpub.florida.gov/metadata/gc\\_socialservice.htm](https://etdmpub.florida.gov/metadata/gc_socialservice.htm)
- Assisted Rental Housing Units in Florida [https://etdmpub.florida.gov/metadata/gc\\_assisted\\_housing.htm](https://etdmpub.florida.gov/metadata/gc_assisted_housing.htm)
- Group Care Facilities <https://etdmpub.florida.gov/metadata/groupcare.htm>
- Mobile Home Parks in Florida [https://etdmpub.florida.gov/metadata/gc\\_mobilehomes.htm](https://etdmpub.florida.gov/metadata/gc_mobilehomes.htm)
- Migrant Camps in Florida <https://etdmpub.florida.gov/metadata/migrant.htm>
- Veteran Organizations and Facilities [https://etdmpub.florida.gov/metadata/gc\\_veterans.htm](https://etdmpub.florida.gov/metadata/gc_veterans.htm)
- Generalized Land Use - Florida DOT District 6 [https://etdmpub.florida.gov/metadata/d6\\_lu\\_gen.htm](https://etdmpub.florida.gov/metadata/d6_lu_gen.htm)
- Census Block Groups in Florida [https://etdmpub.florida.gov/metadata/e2\\_cenacs\\_cci.htm](https://etdmpub.florida.gov/metadata/e2_cenacs_cci.htm)
- 1990 Census Block Groups in Florida [https://etdmpub.florida.gov/metadata/e2\\_cenblkgrp\\_1990\\_cci.htm](https://etdmpub.florida.gov/metadata/e2_cenblkgrp_1990_cci.htm)
- 2000 Census Block Groups in Florida [https://etdmpub.florida.gov/metadata/e2\\_cenblkgrp\\_2000\\_cci.htm](https://etdmpub.florida.gov/metadata/e2_cenblkgrp_2000_cci.htm)
- 2010 Census Block Groups in Florida [https://etdmpub.florida.gov/metadata/e2\\_cenblkgrp\\_2010\\_cci.htm](https://etdmpub.florida.gov/metadata/e2_cenblkgrp_2010_cci.htm)