

Interstate 195

Project Development & Environment (PD&E) Study

I-195/SR 112 From NW 12th Ave to SR 907/Alton Road
FPID No. 440228-2

Project Advisory Team Meeting #2

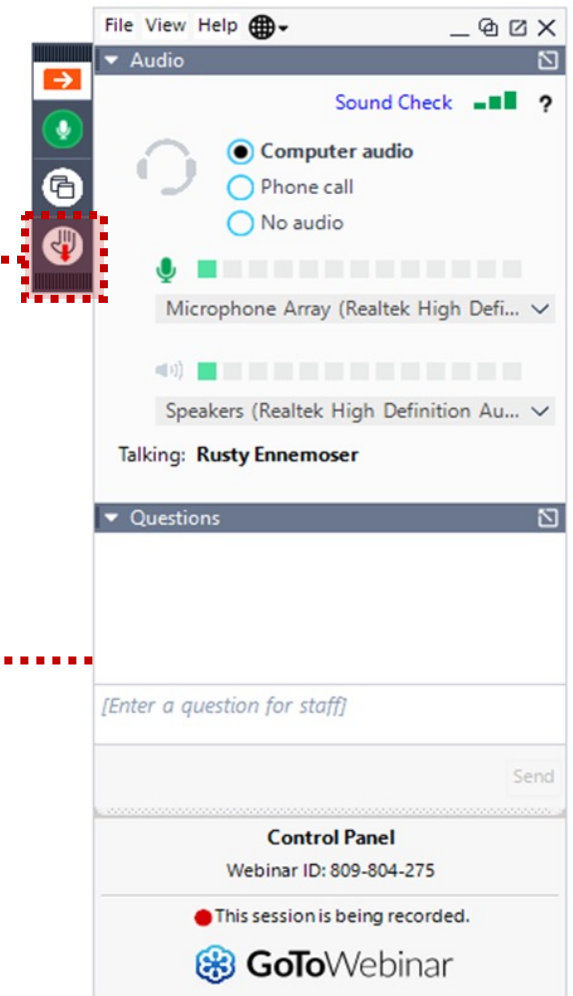
February 15, 2024



Virtual attendees are **automatically muted** to start the meeting

To provide comments during open discussion period:

- Call +1 (562) 247-8422; access code: 547-617-184
- Use "Raise hand" button during comment period, you will be unmuted in order of raising hands
- Submit comments via the "Questions" Box



If you are having technical difficulties, please contact:

e: vsalinas@mrgmiami.com

p: 786-614-0050

Presenters



FDOT Project Manager:
Ivette Funtanellas, P.E.



Consultant Project Manager:
Robert Linares, P.E.



Environmental Scientist:
Caitlin Hill



Consultant Project Engineer:
Stefan Escanes, P.E., PTOE



Community Outreach Specialist:
Paulette Summers

Title VI of the Civil Rights Act of 1964

Public participation is solicited without regard to race, color, national origin, age, sex, religion, disability, or family status. Persons wishing to express concerns relative to FDOT compliance with Title VI may do so by contacting:



Tish Burgher
District Six Title VI Coordinator
1000 NW 111 Avenue
Miami, Florida 33172
(305) 470-5277
Tish.Burgher@dot.state.fl.us

Stefan Kulakowski
State Title VI Coordinator
605 Suwannee Street, Mail Station 65
Tallahassee, Florida 32399-0450
(850) 414-4742
Stefan.Kulakowski@dot.state.fl.us

All inquiries or concerns will be handled according to FDOT procedure and in a prompt and courteous manner.

Study Area



-  Address Operational Deficiencies
-  Enhance System Linkage/Regional Connectivity

-  Enhance Multimodal Connectivity

-  Improve Safety

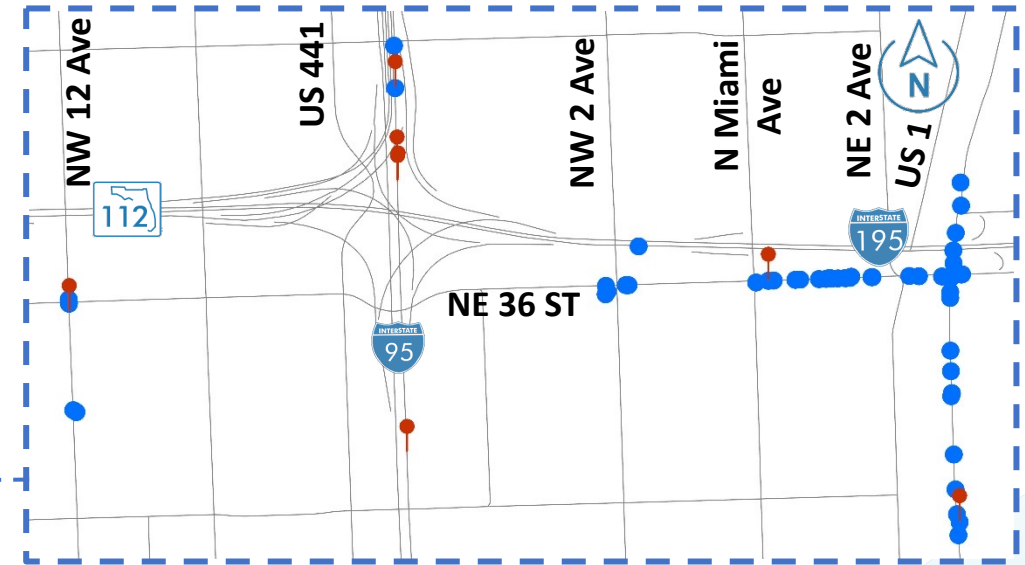
Existing Conditions: Safety

Crash Data

- 7,899 Total 5-Year Crashes (2017-2021)
- Crash Clusters
 - I-95 (within the I-195 interchange): 759 Crashes
 - I-195 at US-1 Interchange: 409 Crashes
 - I-195 from Alton Rd Ramps to 41st Street: 537 Crashes

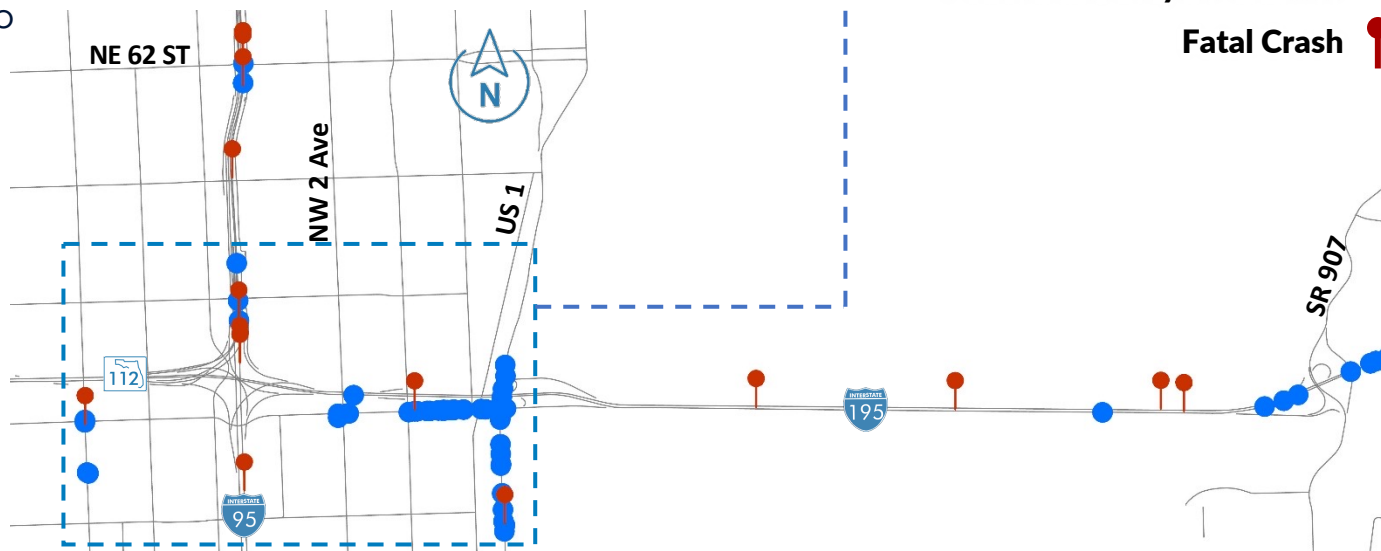
Safety Analysis

- Safety Analysis Guidebook for PD&E Studies
- Quantitative Safety Analysis per Interchange Access Request User Guide (IARUG)
- Target Zero



Legend

- Pedestrian/Bicycle Crashes ●
- Fatal Crash 📍

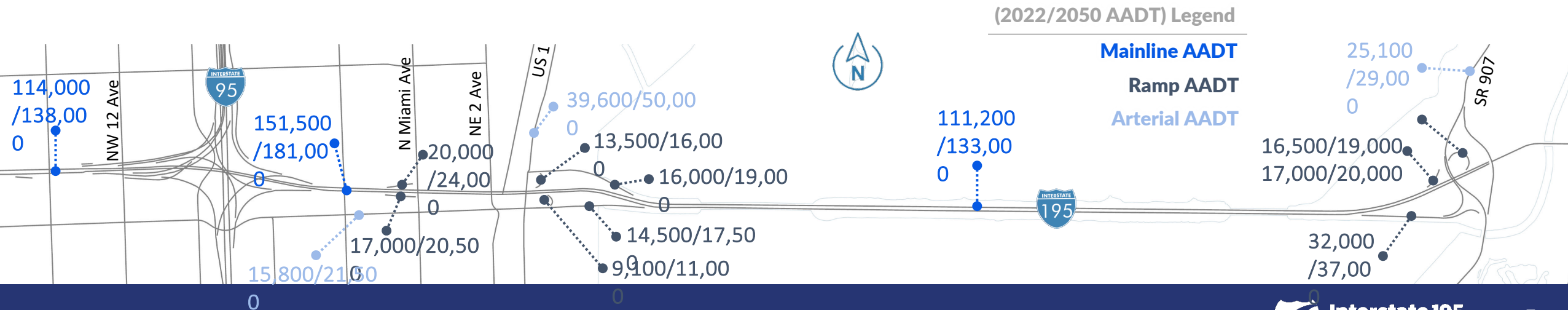


Traffic Analysis

- Traffic Data Collected - Fall-Winter 2022
- Traffic Projections – Design Year 2050
- Traffic Analysis – On-going
 - I-195 Mainline & Interchange Improvements
 - Surface Street Operational Improvements
 - Transit Travel Time
- Systems Interchange Modification Report (SIMR)



Looking West along I-195 at N. Miami Ave



Alternatives Development

No Build

Assumes no improvements are made and does not address any of the corridor needs

Transportation Systems Management and Operations (TSM&O)

Build Alternatives

PD&E Alternatives build off the Corridor Planning Study Refined Build Concept and evaluate:

- Direct Connections to the I-95 Express Lanes
- Interchange Improvements
 - N Miami Avenue
 - Biscayne Boulevard
 - SR 907/ Alton Road
- Surface Street Improvements
- Multimodal
 - Enhance transit opportunities
 - Dedicated pedestrian and bicycle facilities



Alternatives Selection Process

1

Initial Evaluation

> No Build > TSM&O/ITS > Major Alternatives

2

Tier 1: Develop Conceptual Alternatives

Systemwide Concepts

> Express Lanes Connectivity
> Transit Enhancements
> Multimodal Enhancements

Interchange Specific Concepts

> I-195 at I-95 > I-195 at Biscayne Blvd
> I-195 at N. Miami Ave > I-195 at Alton Rd

3

Tier 2: Build Alternatives Evaluation

> Alternative 1 > Alternative 2 > Alternatives Public Information Meeting

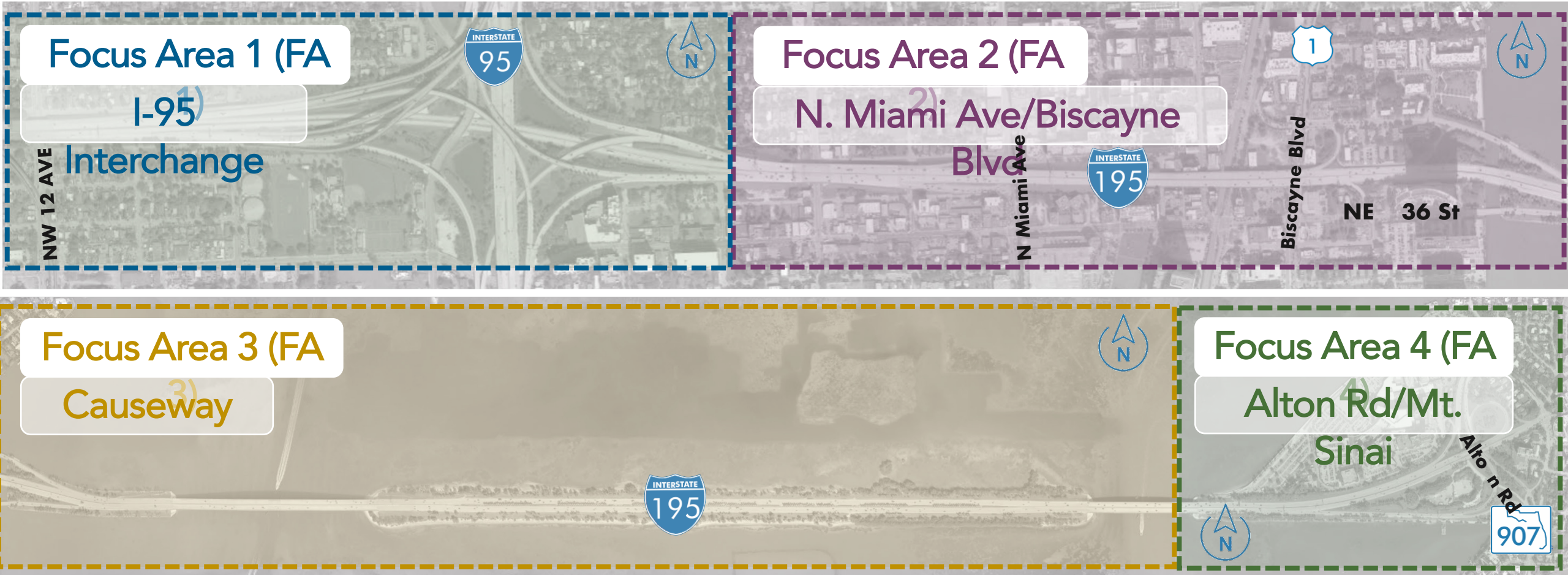
4

Tier 3: Alternative Refinement Evaluation

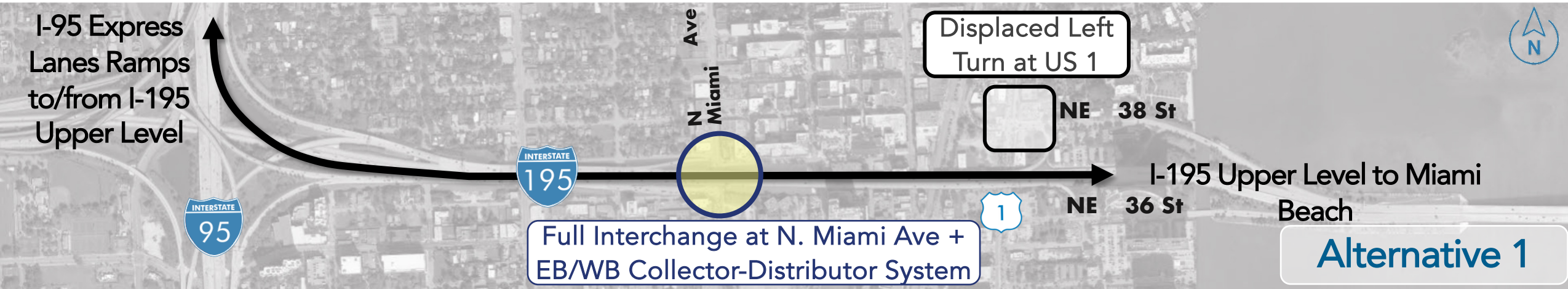
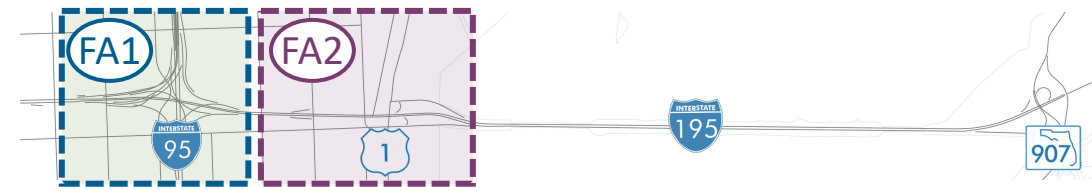
> Preferred Alternative > Public Hearing

Alternatives Improvements Overview

- Four (4) Focus Areas of Improvements



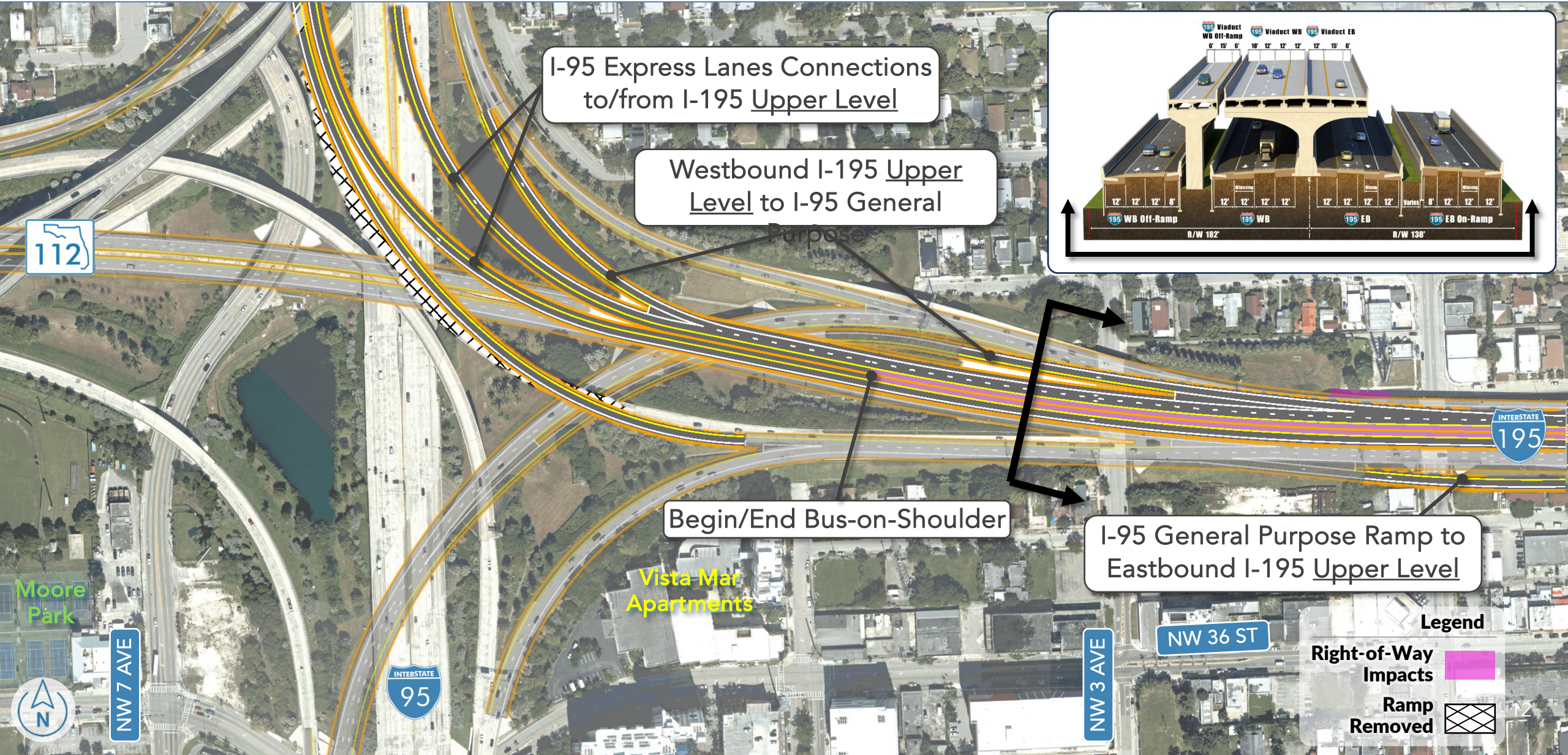
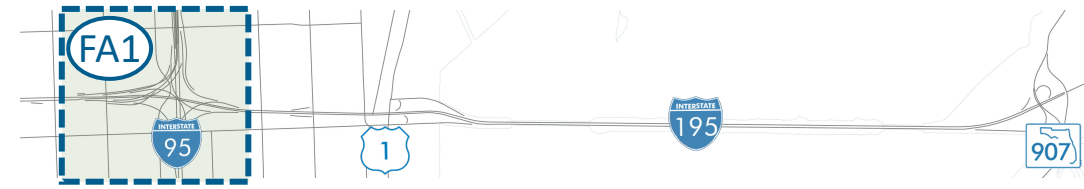
Alternatives Improvement Overview: Focus Areas 1 and 2



Bus-on-Shoulder
Upper & Lower Levels



Alternative 1: I-195/SR 112 at I-95 Interchange Improvements

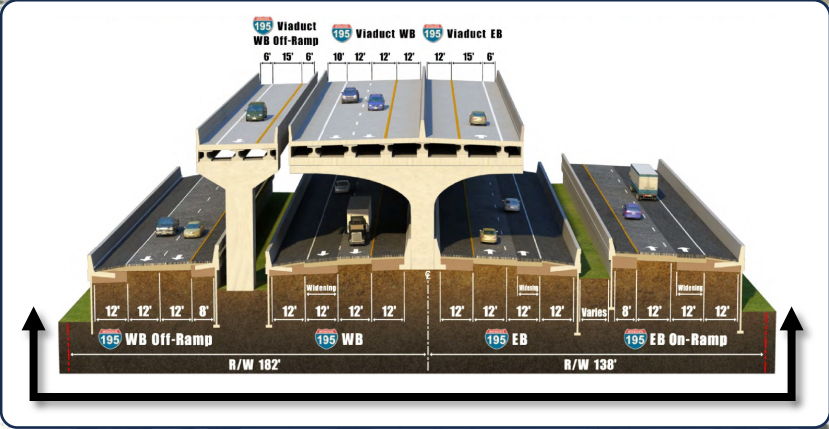


I-95 Express Lanes Connections
to/from I-195 Upper Level

Westbound I-195 Upper Level
Level to I-95 General
Purpose

Begin/End Bus-on-Shoulder

I-95 General Purpose Ramp to
Eastbound I-195 Upper Level



NW 7 AVE

NW 3 AVE

NW 36 ST

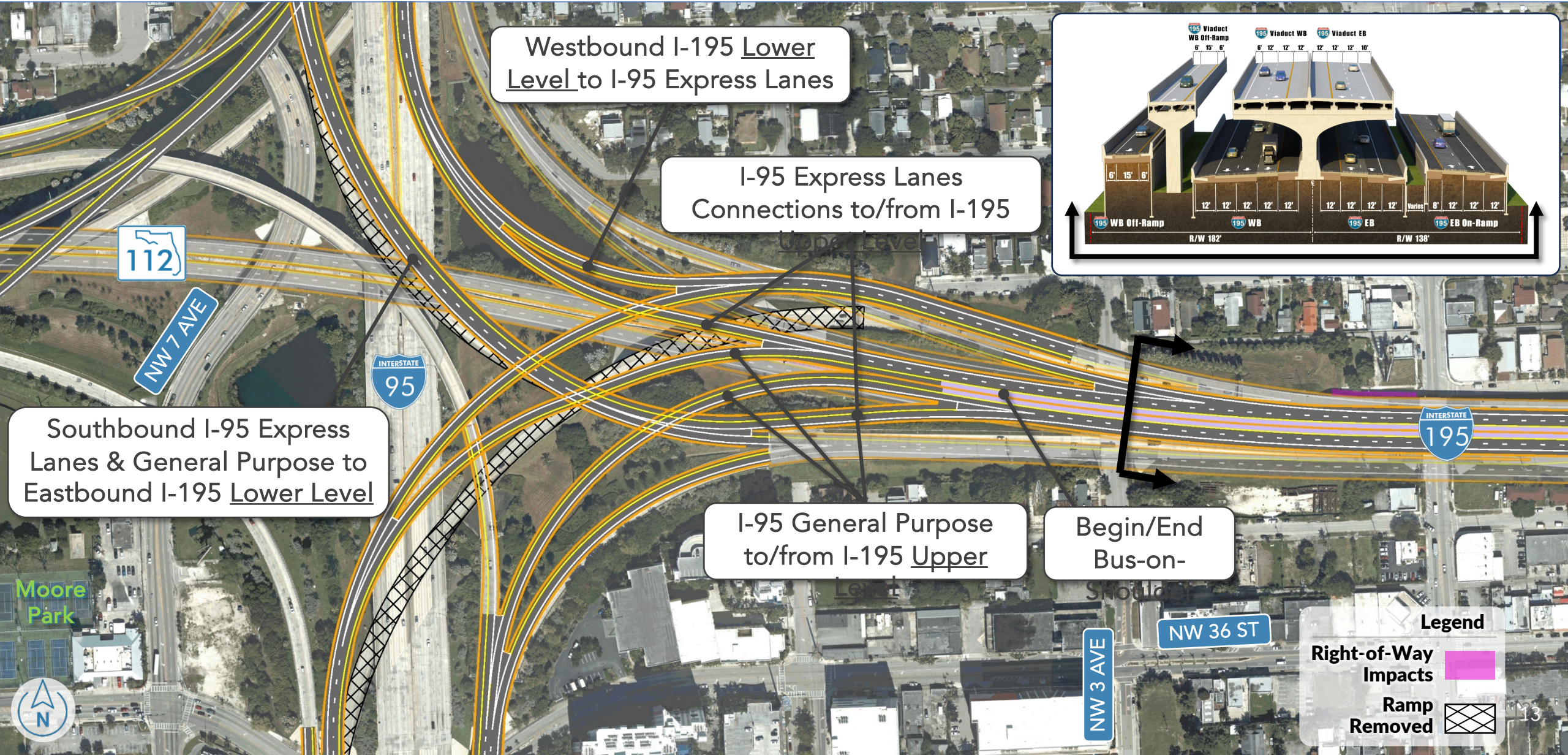
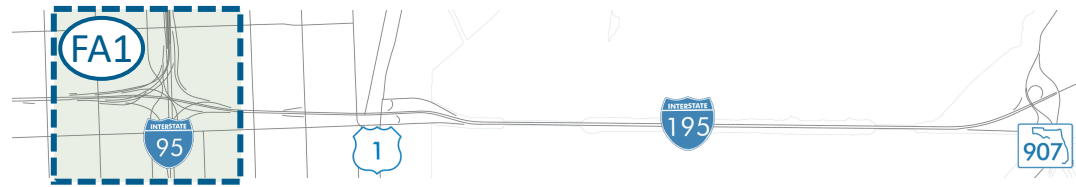
Vista Mar
Apartments

Moore
Park

Legend

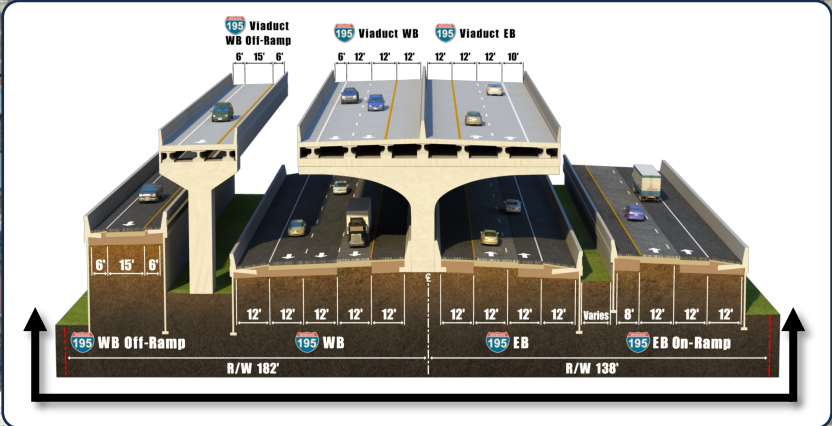
- Right-of-Way Impacts
- Ramp Removed

Alternative 2: I-195/SR 112 at I-95 Interchange Improvements



Westbound I-195 Lower
Level to I-95 Express Lanes

I-95 Express Lanes
Connections to/from I-195



Southbound I-95 Express
Lanes & General Purpose to
Eastbound I-195 Lower Level

I-95 General Purpose
to/from I-195 Upper
Level

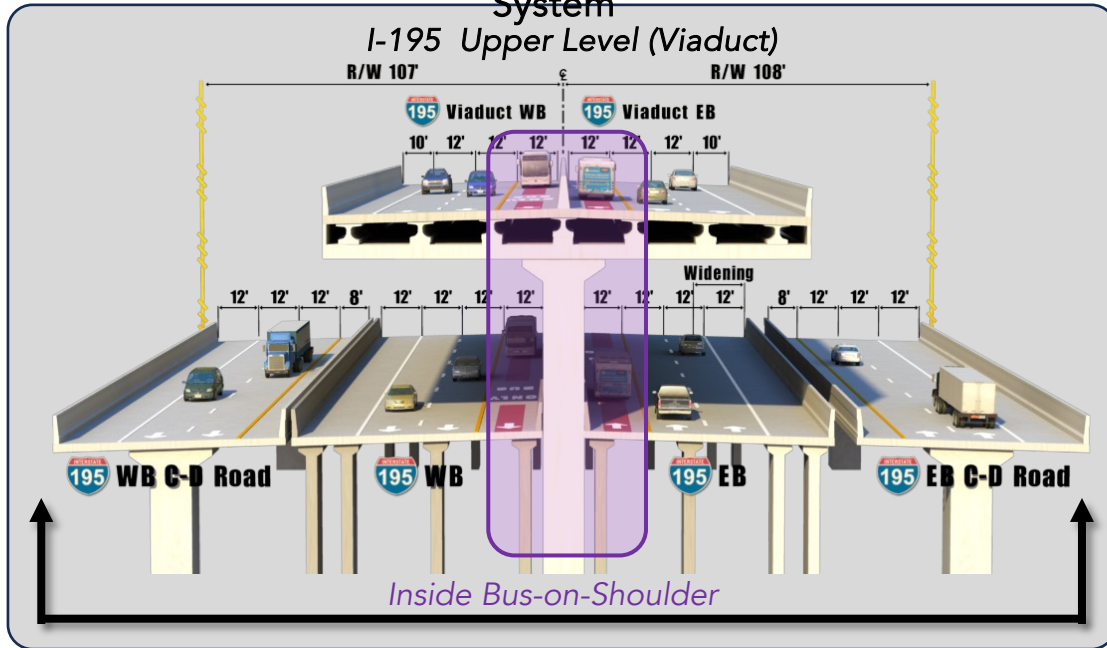
Begin/End
Bus-on-
Shoulder

Legend

- Right-of-Way Impacts
- Ramp Removed

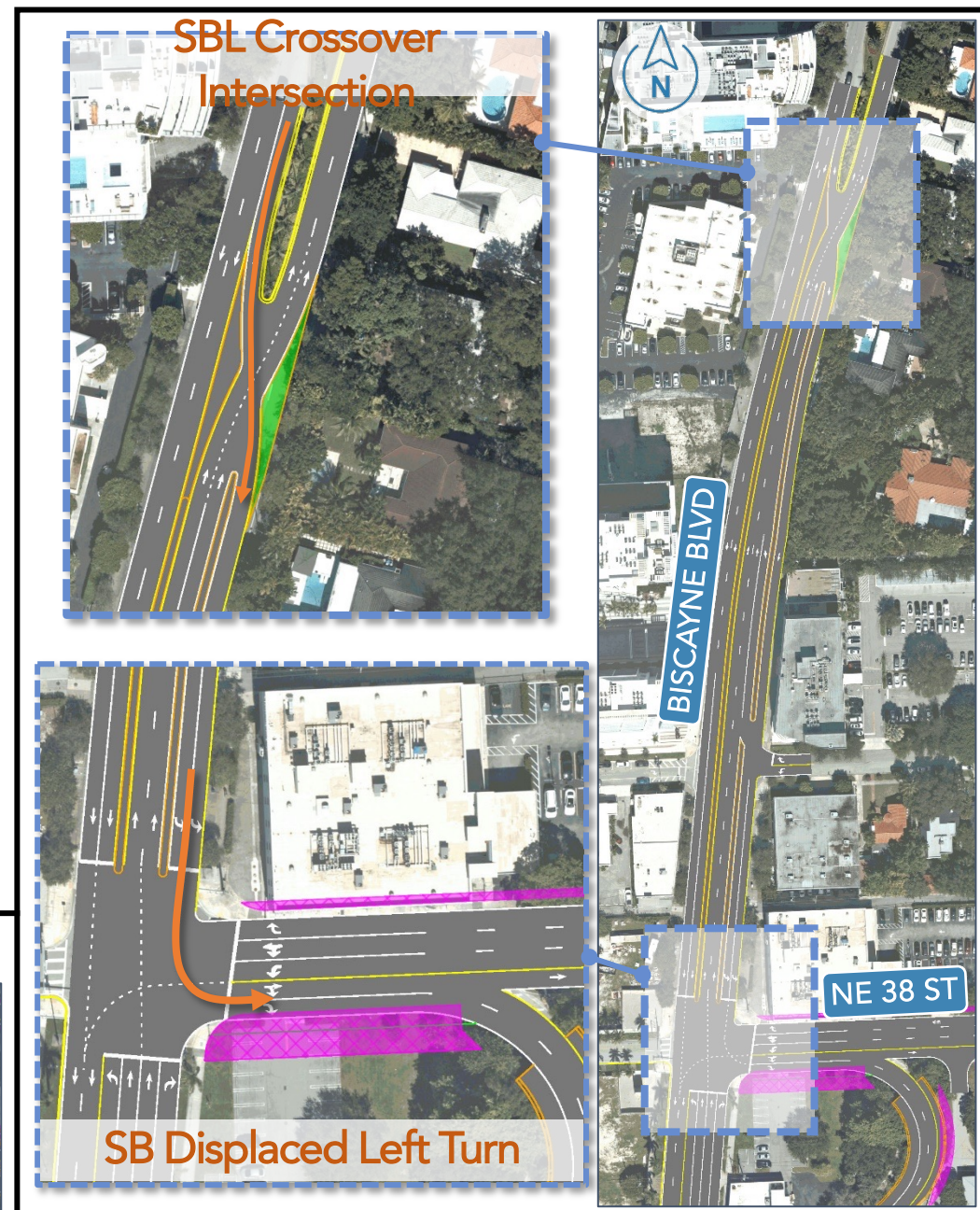
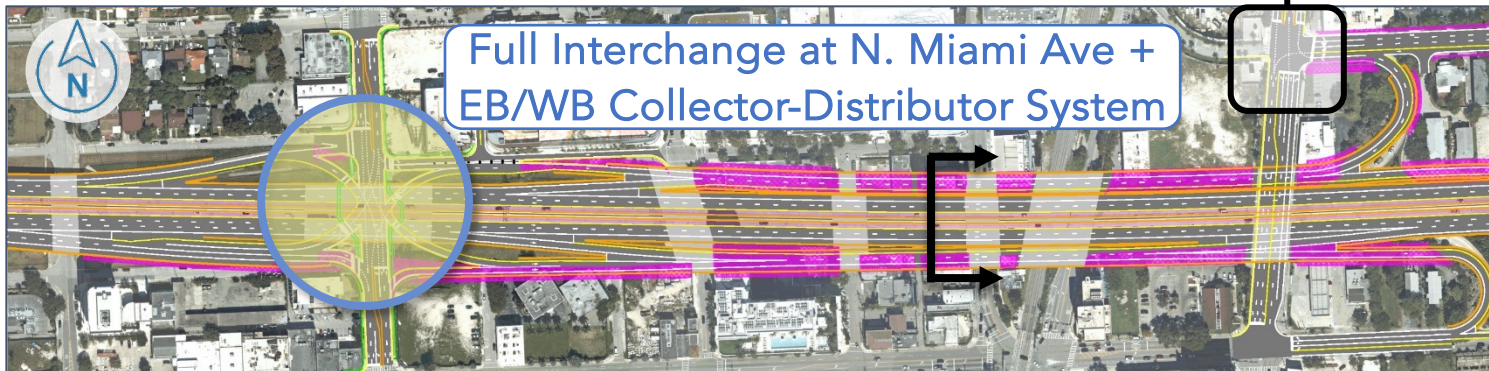
Alternative 1: N. Miami Avenue & US 1 Improvements

Typical Section with Upper Level and Collector-Distributor System

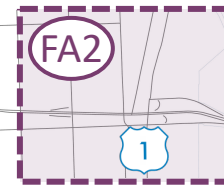


Displaced Left Turn at US 1

Full Interchange at N. Miami Ave + EB/WB Collector-Distributor System



Alternative 2: US 1/Biscayne Blvd Interchange Improvements



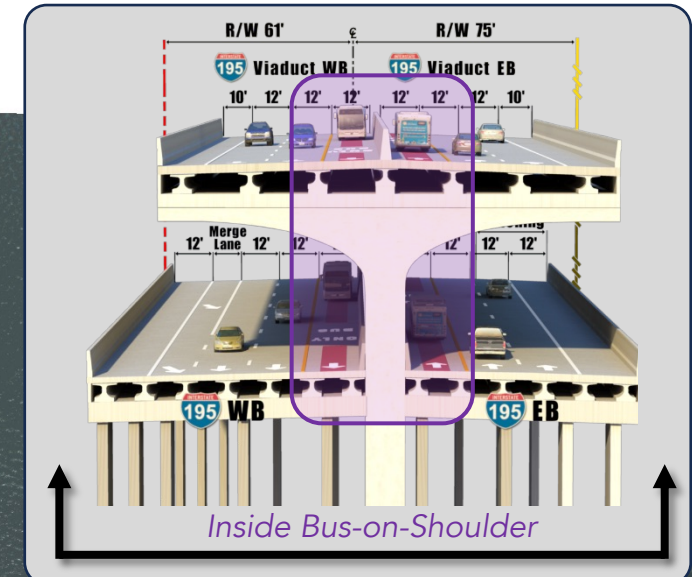
Legend
Right-of-Way Impacts

SB Biscayne Blvd
Direct Ramp to WB
I-195 Lower Level

NE 38 Street Loop
Ramp to WB I-195
Lower Level

EB I-195 Texas U-Turn
Ramp to Biscayne
Boulevard

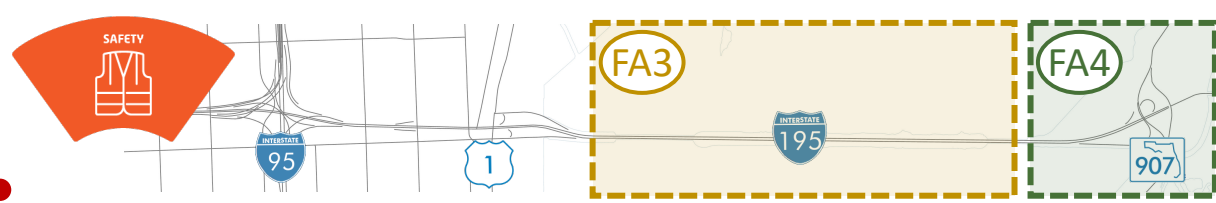
NE 36 Street Loop
Ramp to EB I-195



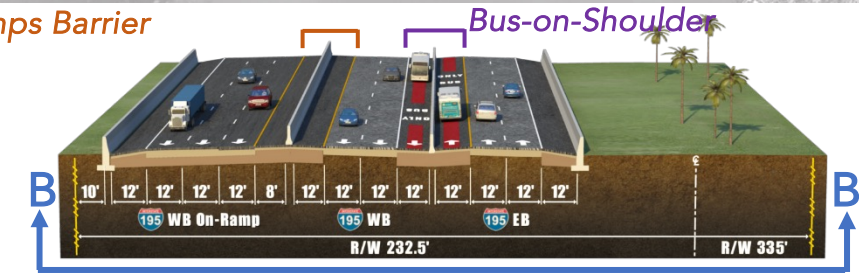
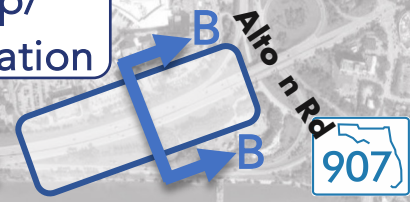
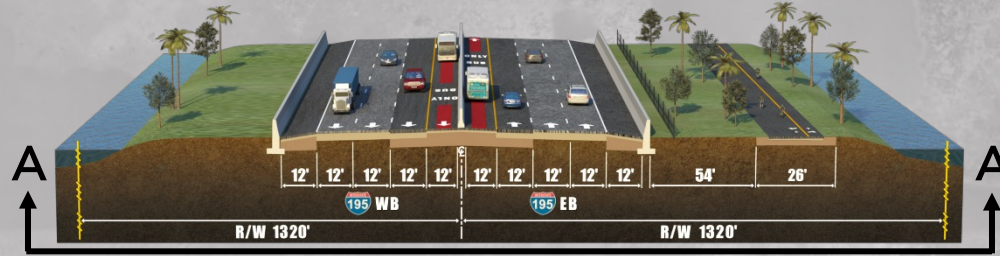
Biscayne Bay

Shared-Use Path

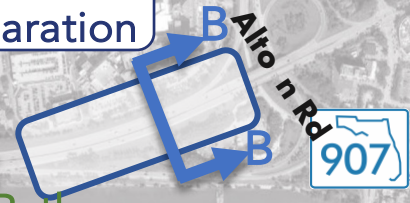
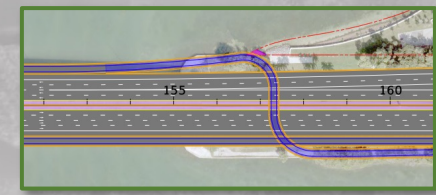
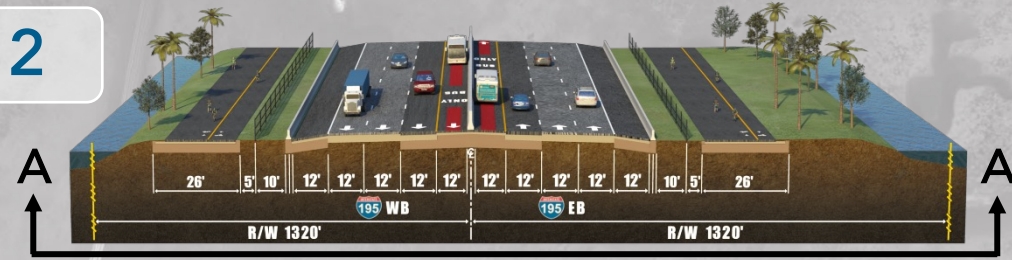
Alternatives Improvement Overview: Focus Areas 3 and 4



Alternative 1



Alternative 2



Engineering Analysis



Drainage:

- Stormwater runoff flows into Biscayne Bay Aquatic Preserve an Outstanding Florida Water (OFW)
- 13 total drainage basins within the project area
- Water quality treatment capacity available within the existing right-of-way
- Preparation of High-Water Memorandum for resiliency initiatives & coordination with agencies

Structures:

- New I-195 Upper Level (Viaduct)
- 10 to 20 New Interchange Ramps
- Widening of Causeway Bridge(s)

Right-of-Way: Impact on 4.8 Acres (ALT 1) and Impact on 1.9 Acres (ALT 2)

Project Phasing: Identify short-term and long-term improvements

Potential Environmental Impacts



Natural Resources Evaluation

- **Essential Fish Habitat**
 - Seagrass
 - Corals
- **Wildlife and Habitat**
 - Florida Bonneted Bat
 - Biscayne Bay Aquatic Preserve
 - USFWS Consultation Areas
 - Habitat Areas of Particular Concern
 - Critical Habitat (Manatee)
- **Other Surface Waters**
 - Outstanding Florida Water



Potential Environmental Impacts

Sociocultural Effects Evaluation

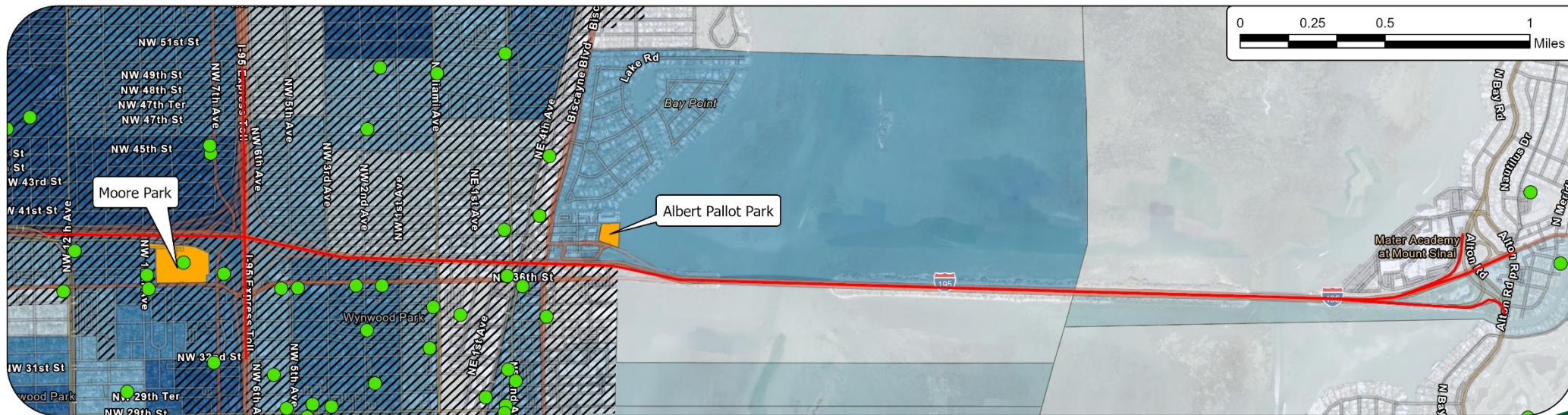
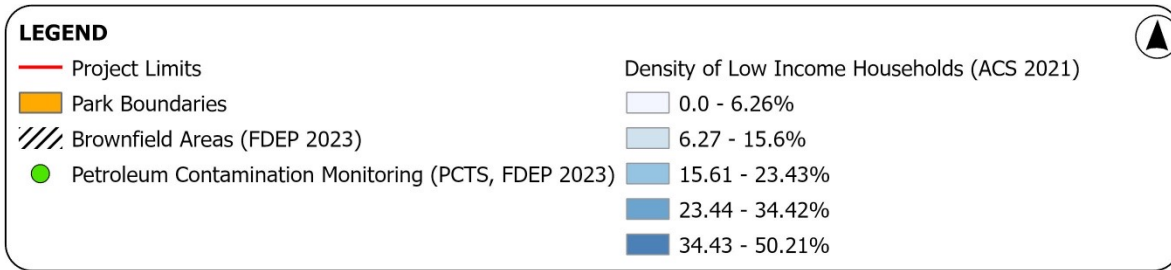
- Protected populations exist within the study area
 - Low Income and Minority

Recreational Section 4f

- Moore Park and Albert Pallot Park

Contamination Screening Evaluation

- 2 Brownfield areas and 16 petroleum contamination monitoring sites



Resiliency

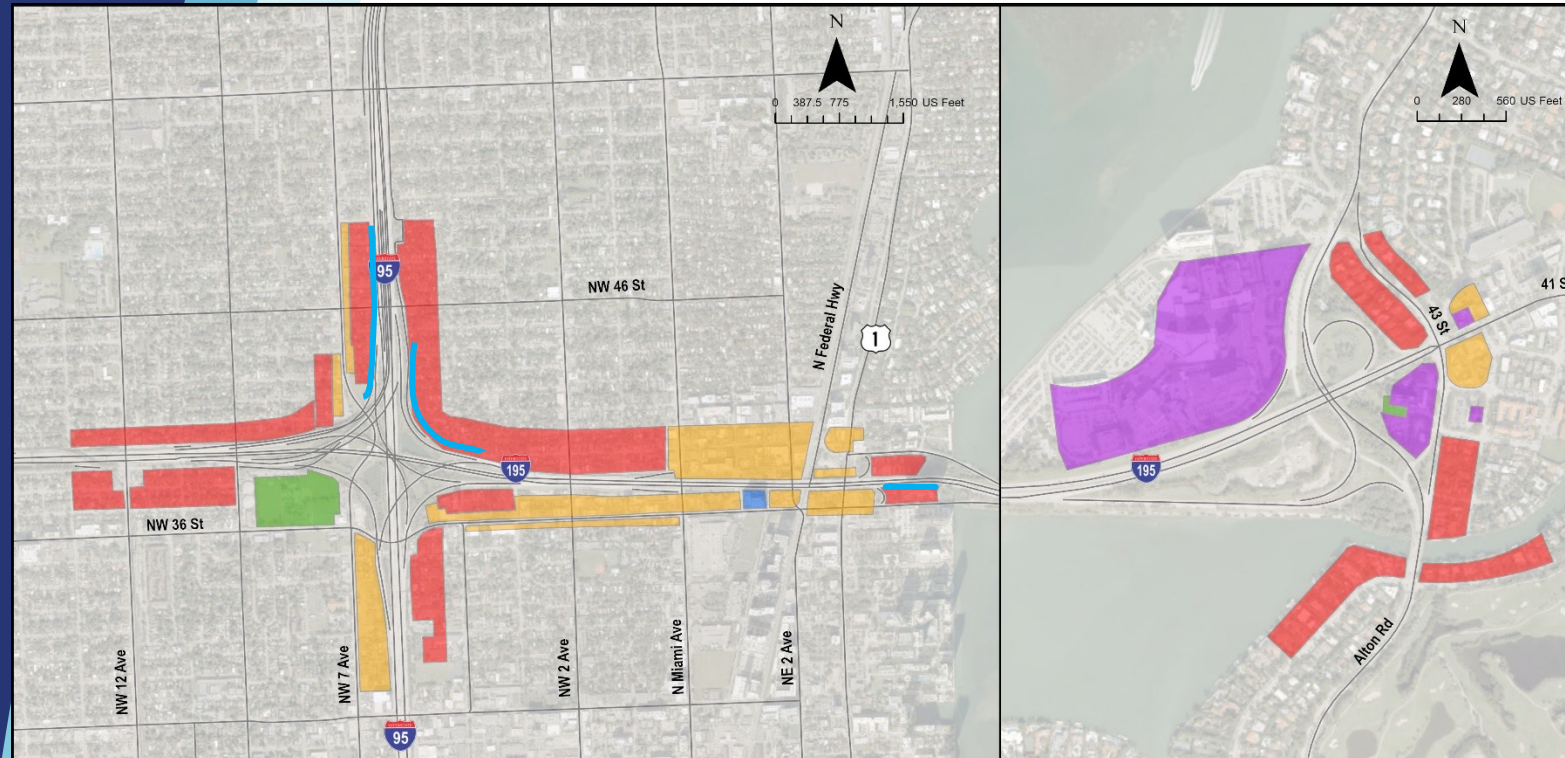
- Resiliency initiatives
 - (USACE, MDC) Back Bay Coastal Storm Risk Management Feasibility Study
 - (MDC) Biscayne Bay Watershed Management Board and Task Force
 - (City of Miami Beach) Citywide Living Shoreline Viability Assessment
 - (MDC, FDEP, Biscayne Bay Aquatic Preserve, The Nature Conservancy) Biological Restoration to Enhance Water Quality
- Identifying resiliency opportunities

LEGEND

Potential Resiliency Projects

- Living Seawall (USACE, MDC)
- Living Shoreline (Miami Beach)
- Living Shoreline (USACE, MDC)
- Mangrove Planting Area (Miami Beach)
- Mangrove Restoration (USACE, MDC)
- Venetian Basin Sponge Nursery (MDC, FDEP, FL Sea Grant, TNC)





LEGEND

FHWA Noise Activity Categories (Types of Noise Sensitive Sites)

- Category B Exterior Residential
- Category C Exterior Recreational
- Category D Interior
- Category E Exterior Other
- Category B/E Mixed Use
- Existing Noise Walls

Noise

- Noise Sensitive Areas
 - High rise residential
 - Low density residential
 - Mixed-use residential/commercial
 - Recreational resources
- Alternatives anticipated to impact up to three (3) existing noise barriers

Next Steps:

- Existing Traffic Noise Monitoring data collection for potentially impacted areas
- Evaluate noise impacts from the project and determine if additional noise abatement is warranted
- Evaluate potential construction noise and vibration impacts

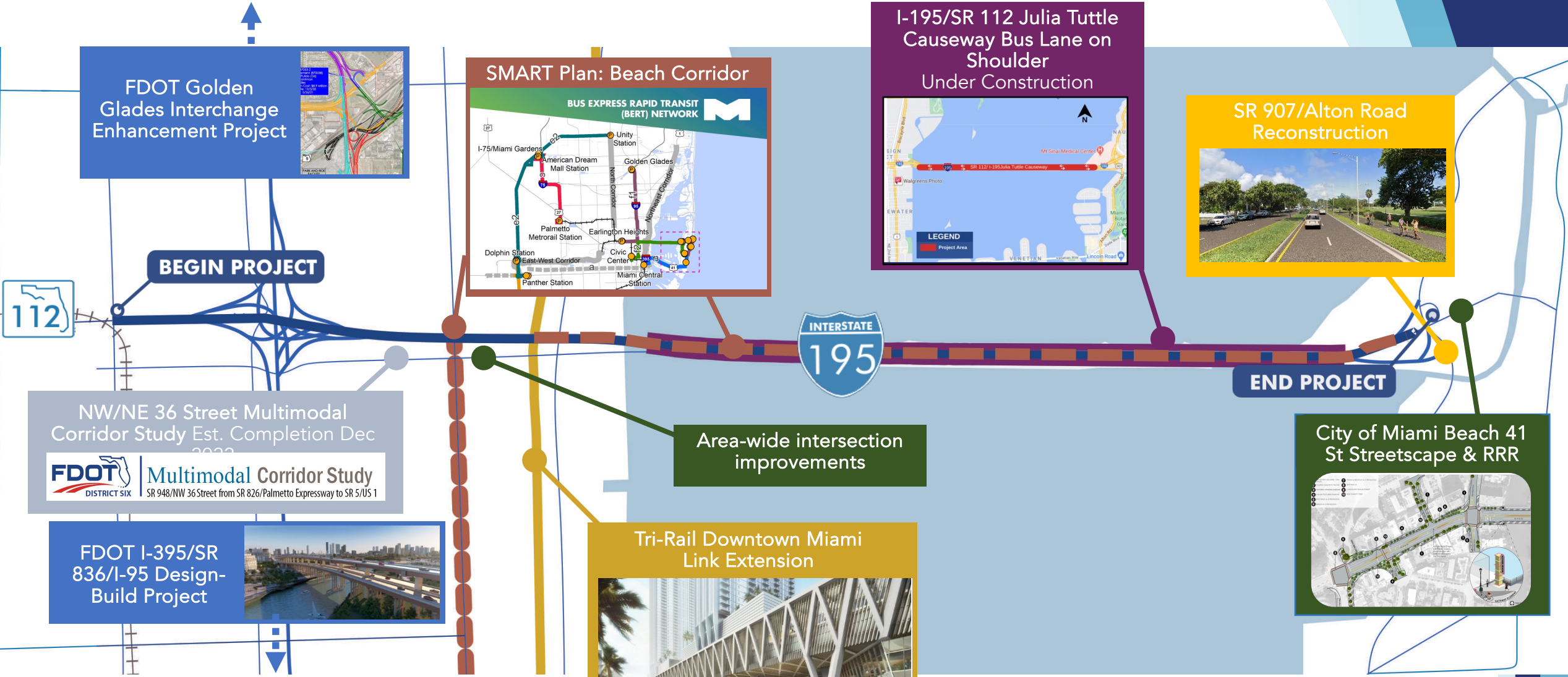
Public Involvement



- Continue and Expand Outreach Efforts from Corridor Planning Study (CPS)
- Local Agency Coordination
 - City of Miami & Miami Beach
 - Miami-Dade County
 - Miami-Dade TPO
 - Bicycle/Pedestrian Advisory Committee (BPAC) *(February 13, 2024)*
 - Transportation Planning Technical Advisory Committee (TPTAC) *(February 21, 2024)*
 - Transportation Aesthetics Review Committee (TARC) *(February 21, 2024)*
 - Citizens' Transportation Advisory Committee (CTAC) *(April 3, 2024)*
- Project Advisory Team (PAT) and Community Advisory Group (CAG)
 - PAT #1 *(November 2, 2022)*; PAT #2 *(February 15, 2024)*; PAT #3 *(anticipated 4th Quarter 2024/1st Quarter 2025)*
 - CAG #1 *(April 3, 2023)*; CAG #2 *(February 22, 2024)*; CAG #3 *(anticipated 4th Quarter 2024/1st Quarter 2025)*
- Stakeholder Meetings (available upon request)
- Public Meetings
 - Kick-Off Meeting *(February 8, 2023)*
 - Alternatives Public Information Meeting *(February 26 & 28, 2024)*
 - Public Hearing *(anticipated 1st Quarter 2025)*



Coordination

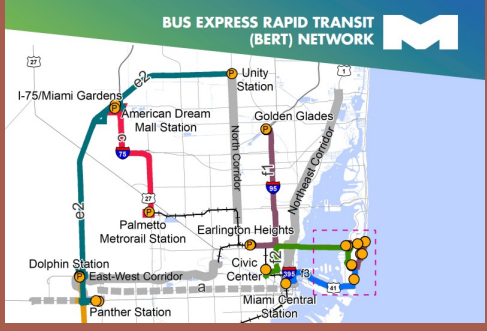


FDOT Golden Glades Interchange Enhancement Project



SMART Plan: Beach Corridor

BUS EXPRESS RAPID TRANSIT (BERT) NETWORK



I-195/SR 112 Julia Tuttle Causeway Bus Lane on Shoulder Under Construction



SR 907/Alton Road Reconstruction



NW/NE 36 Street Multimodal Corridor Study Est. Completion Dec 2022

FDOT **Multimodal Corridor Study**

DISTRICT SIX SR 948/NW 36 Street from SR 826/Palmetto Expressway to SR 5/US 1

FDOT I-395/SR 836/I-95 Design-Build Project

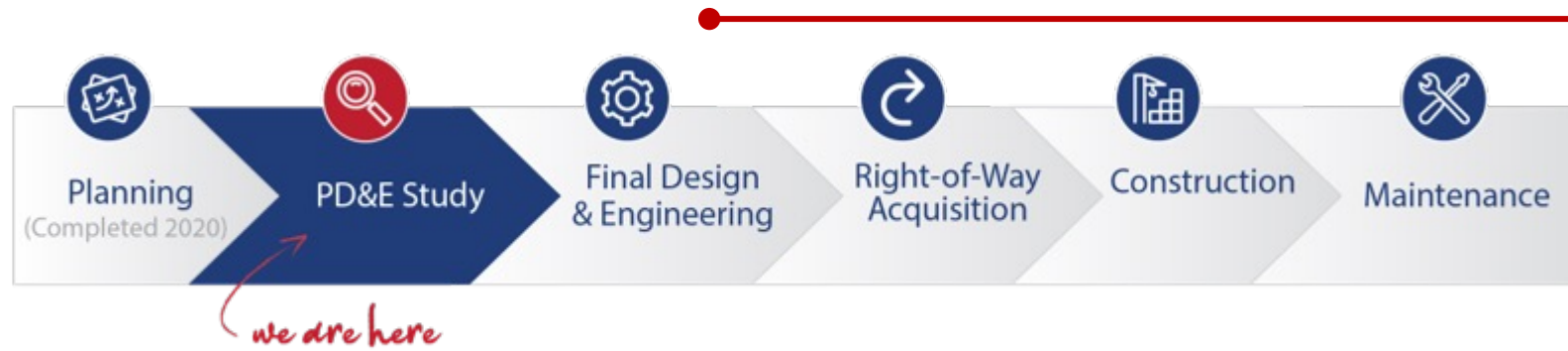


Tri-Rail Downtown Miami Link Extension



City of Miami Beach 41 St Streetscape & RRR





PD&E Study Timeline



Next Steps

- Engineering & Environmental Documentation
- Selection of Preferred Alternative
- Public Hearing (1st Quarter 2025)

Contact Us

Ivette Funtanellas, P.E.

Project Manager
FDOT D6
1000 NW 111 Ave, Rm 6251
Miami, Florida 33172
(305) 470-5270

Ivette.Funtanellas@dot.state.fl.us

Robert Linares, P.E.

Consultant Project Manager
Metric Engineering, Inc.
13940 SW 136th St, Suite 200
Miami, Florida 33186
(786) 396-2131

Robert.Linares@metriceng.com

Alicia Gonzalez

Community Outreach Specialist
Media Relations Group, LLC
14707 South Dixie Hwy, Suite 404
Miami, Florida 33176
(786) 280-6645

agonzalez@mrgmiami.com



<https://www.fdotmiamidade.com/i195pdestudy.html>



Interstate 195

PD&E Study

I-195/SR 112 From NW 12th Ave to Alton Road/SR 907

Thank you!

