



Interstate 195 PD&E Study

I-195/SR 112 From NW 12th Ave to SR 907/Alton Road
FPID No. 440228-2

Project Advisory Team Meeting #1

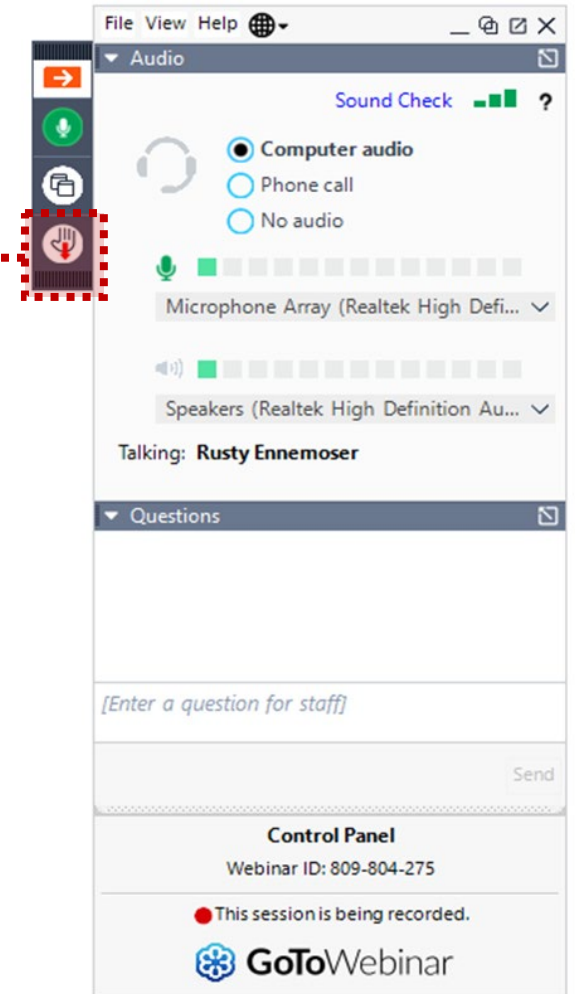
November 2, 2022



- Attendees will remain muted throughout the presentation except for the Open Discussion session.
- We ask that you use the **"Raise Hand"** button on your GoToWebinar panel to provide your input and participate during the open discussion. A staff member will advise when it is your turn to speak.



If you are having technical difficulties, please contact:
e: vsalinas@mrgmiami.com
p: 786-614-0050



Title VI of the Civil Rights Act of 1964

Public participation is solicited without regard to race, color, national origin, age, sex, religion, disability, or family status. Persons wishing to express concerns relative to FDOT compliance with Title VI may do so by contacting:

Nicholas Danu, PE
District Six Title VI Coordinator
1000 NW 111 Avenue
Miami, Florida 33172
(305) 470-5219
Nicholas.Danu@dot.state.fl.us

Aldrin T. Sanders
State Title VI Coordinator
605 Suwannee Street, Mail Station 65
Tallahassee, Florida 32399-0450
(850) 414-4764
Aldrin.Sanders@dot.state.fl.us

All inquiries or concerns will be handled according to FDOT procedure and in a prompt and courteous manner.

Agenda

- Introductions
- Role of Project Advisory Team
- Study Area and Background
- Summary of the 2020 Corridor Planning Study
- PD&E Study Overview
- Next Steps
- Questions

Role of Project Advisory Team

- ✓ Provide guidance and serve as a resource to the PD&E Study Team
- ✓ Ensure stakeholder interests are fully considered in study
- ✓ Serve as a sounding board for recommendations



I-195 PD&E Study Area and Objectives

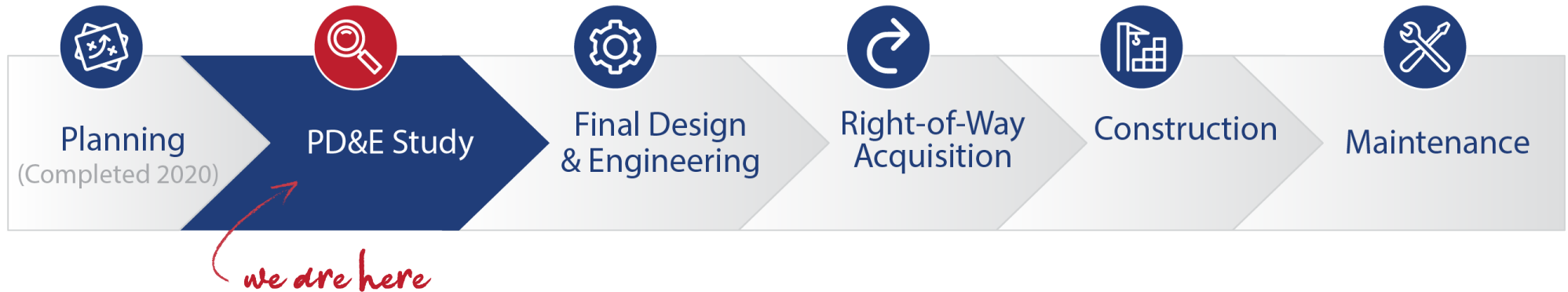
I-195/SR 112 from NW 12 Avenue to SR 907/Alton Road



- Address Operational Deficiencies
- Enhance System Linkage/Regional Connectivity
- Enhance Multimodal Connectivity
- Improve Safety

What is a PD&E Study?

A PD&E study is a blending of engineering analysis, environmental assessments, and public involvement activities. The process is used by engineers and planners to determine the location and conceptual design of the preferred roadway improvements.



Purpose & Needs

The purpose of this project is to evaluate alternatives, address operational deficiencies and relieve existing/future congestion in order to accommodate future travel demand projected as a result of area-wide population and employment growth along the I-195 corridor.

Needs

- Address existing and future congestion
- Enhance system linkage and improve regional connectivity
- Improve safety conditions
- Enhance multimodal connectivity between the cities of Miami and Miami Beach

Background

Transportation Demand

According to the Miami-Dade Transportation Planning Organization, Long Range Transportation Plan, Miami-Dade County population is expected to increase by 67% and employment by 38% by 2045. Several existing capacity and operational deficiencies were identified which are projected to be exacerbated in the future if no improvements are made.

System Linkage

I-195/SR 112 is a Strategic Intermodal System corridor that connects to I-95 and provides critical connection for Miami Beach. Access to the I-95 express lanes is also a critical need for areas east of I-95 and Miami Beach.



Background

Safety

Several locations of the corridor are on FDOT's high crash list with multiple crash clusters indicative of safety concerns that need to be addressed.

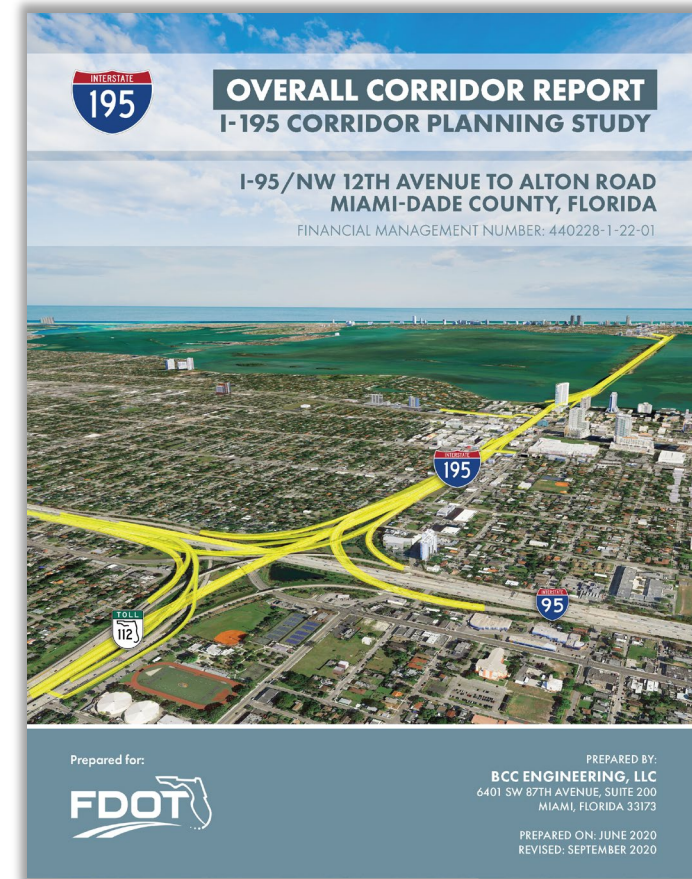
Multimodal

There is a lack of bicycle and pedestrian connectivity between Miami and Miami Beach. A separate bicycle and pedestrian facility that connects to existing facilities within Miami and Miami Beach will be evaluated. The project will also evaluate options that enhance transit opportunities.



2020 Corridor Planning Study (CPS)

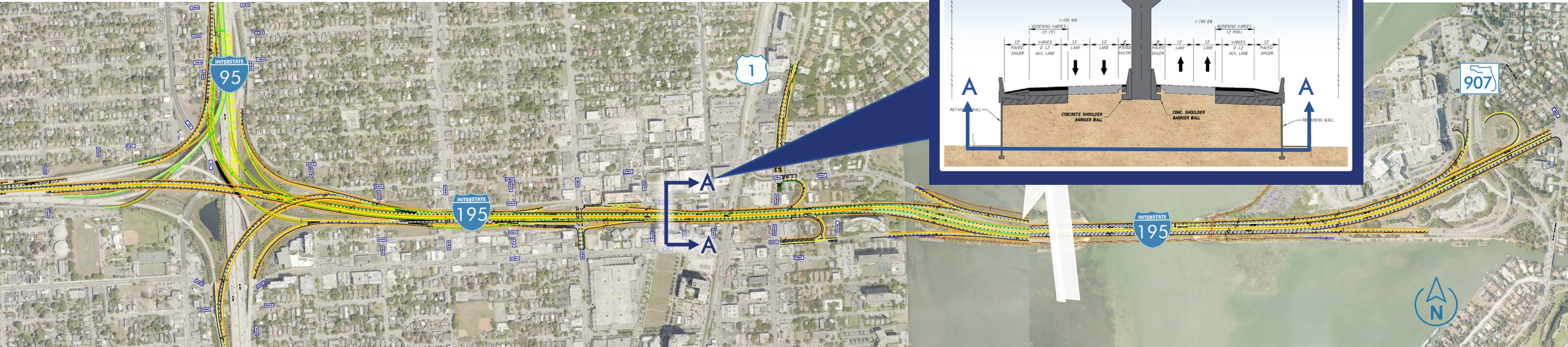
- I-195 Corridor Planning Study completed June 2020
- Developed and evaluated several alternatives
 - Alternative 3 was recommended as the Refined Build Concept
 - Comprehensive Public Outreach
 - Public Workshop
 - Elected Official Briefings
 - Neighborhood and small group meetings
 - Project Advisory Team (4 meetings)



Corridor Planning Study Refined Build Concept

Typical Section

Alternative 3 serves as the foundation for the PD&E Study



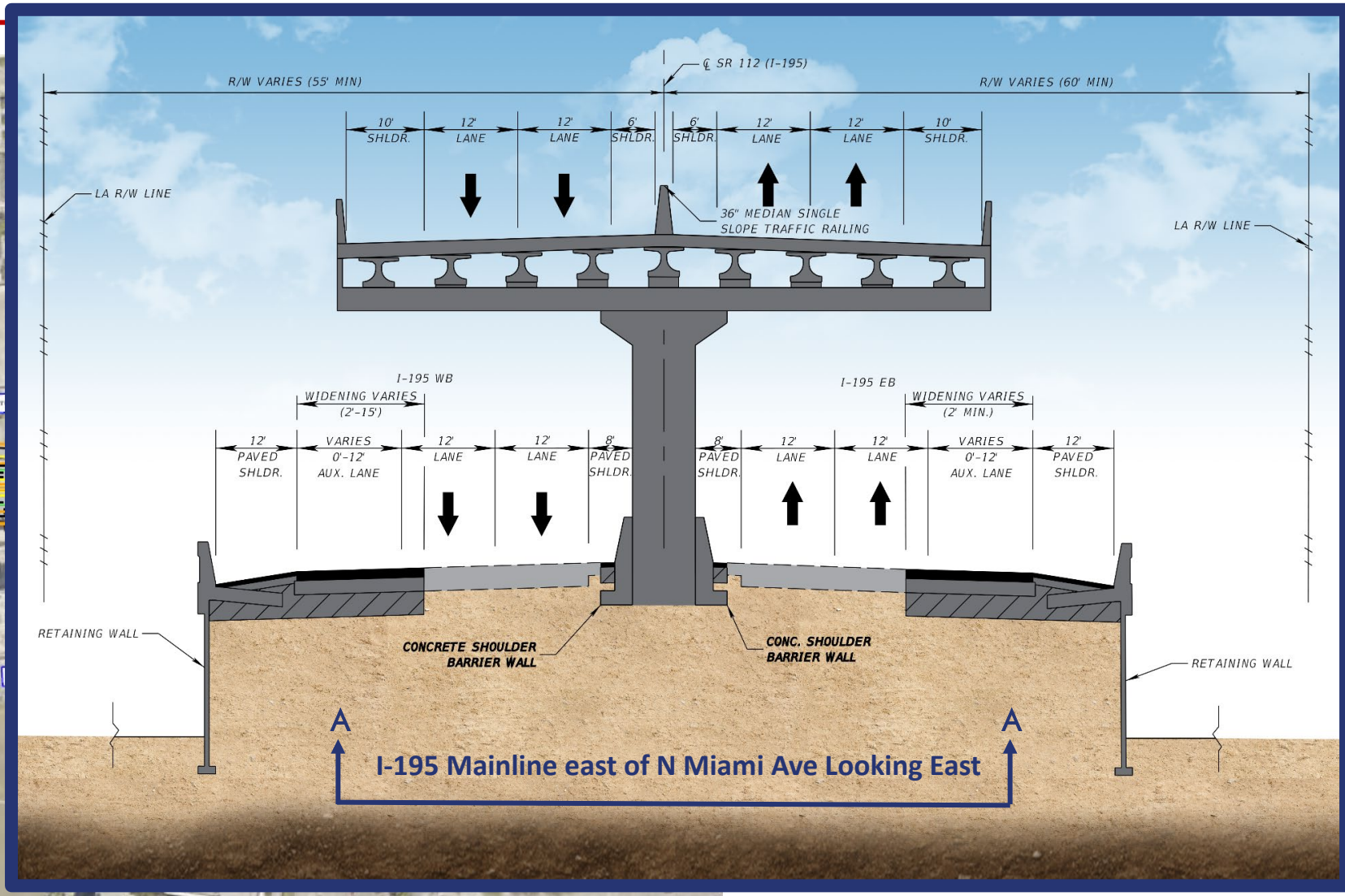
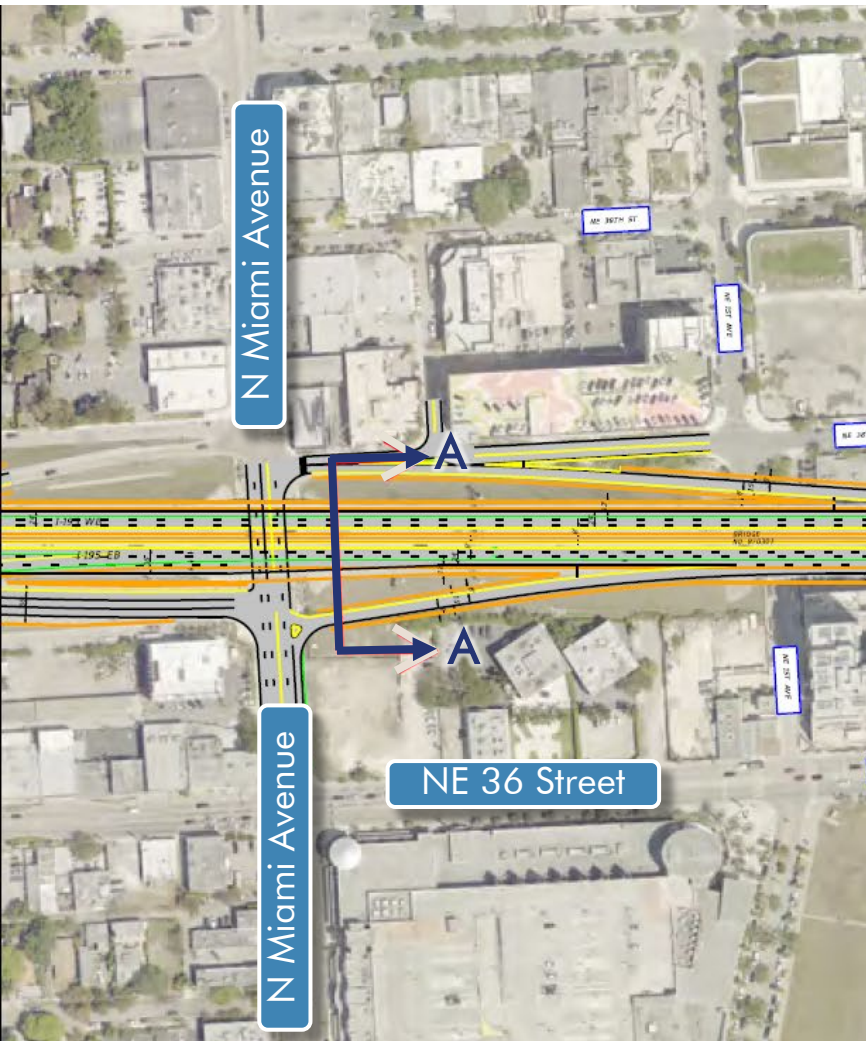
System Improvements

1. Four-lane viaduct with connections to/from I-95 General Purpose and Express Lanes
2. Advances the Bus Express Transit Network component of the SMART Plan
3. Widens Julia Tuttle Causeway once viaduct is terminated
4. Provides full interchange at the North Miami Avenue

Base Improvements

1. Additional Lane SR 112 Westbound
2. Additional Lane SR 112 Eastbound
3. Intersection improvements at eastbound I-195 off-ramp to NE 36 Street
4. Eastbound I-195 on-ramp reconfiguration to parallel-type
5. Additional lane for westbound I-195 off-ramp
6. Additional Lane I-195 eastbound to Alton Road off-ramp
7. Signalized intersection at northbound/southbound Alton Road.
8. I-195 westbound Connector-Distributor Road

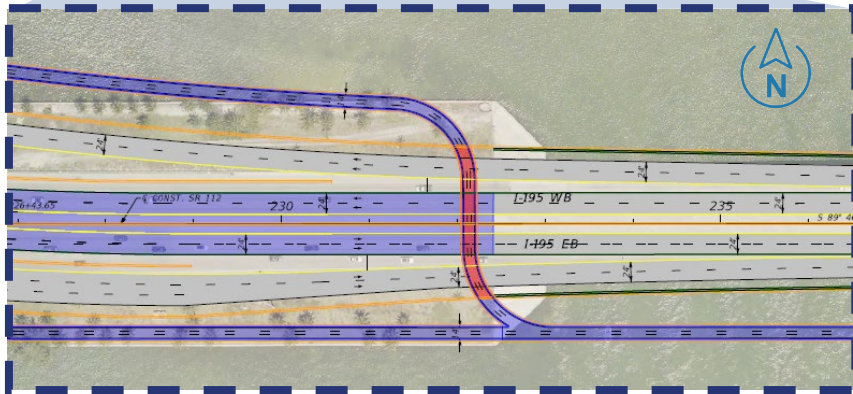
Corridor Planning Study Refined Build Concept



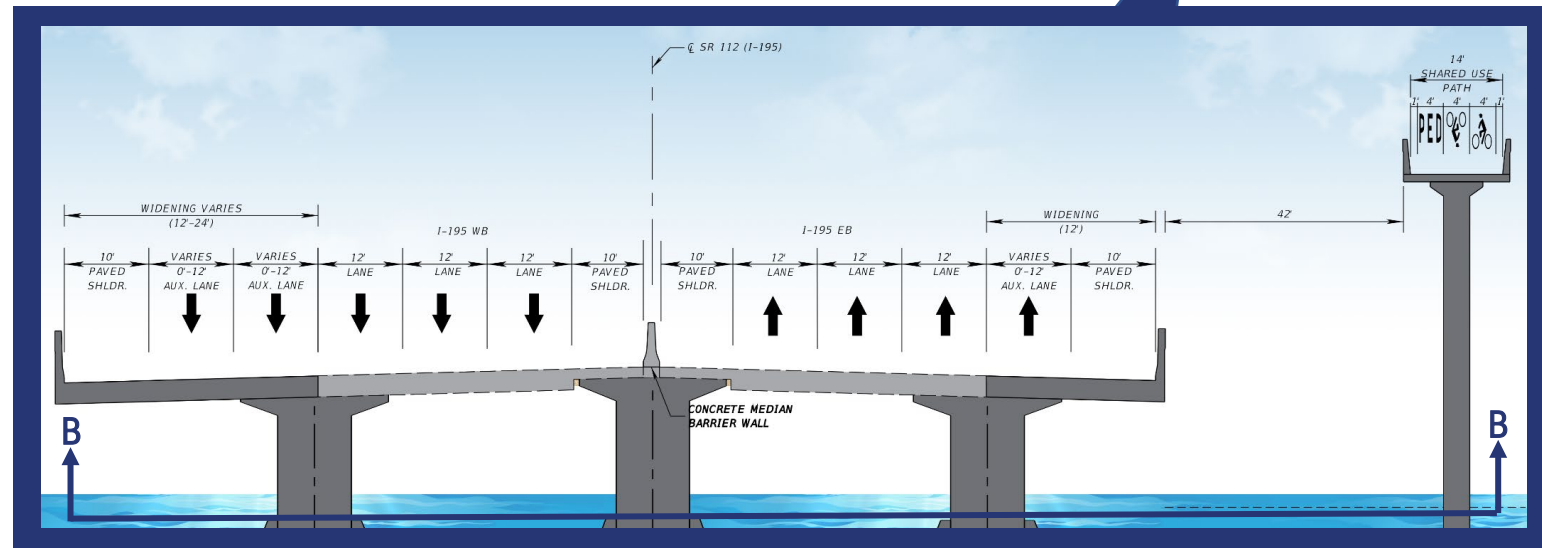
Corridor Planning Study Refined Build Concept



Alternative A



Typical Section



Bicycle & Pedestrian Improvements

1. Separated Shared Use Path
2. Connects to existing shared use path along Southbound Alton Road
3. New Shared Use Path North of Mount Sinai Medical Center
4. Evaluate providing connection underneath Julia Tuttle Causeway

Additional Improvements

Potential Surface Street Improvements

1. NW 12 Avenue Texas U-Turn
2. Biscayne Boulevard Interchange
 1. Connector-Distributor (CD) Road
 - Direct Flyovers
3. CD-Road System with Texas U-Turns
4. NW 36 Street



Corridor Planning Study Project Advisory Team Feedback

- City of Miami
 - Concerns regarding pedestrian safety at ramp terminal improvements
 - Request for potential allocation of the area south of NE 38 Street between the on-ramp and Biscayne Boulevard
 - Coordinate intersection improvements with ongoing Miami-Dade County projects (i.e. eliminating southbound NE 2 Avenue at NE 36 Street)
 - Concerns of causing additional congestion on North Miami Avenue with full interchange. Suggested diverting traffic to NE 1 Avenue
 - Concerned if emergency vehicles would be able to access separated bike/ped structure
 - Concerns of social impacts

CPS Project Advisory Team Meetings

- CPS PAT#1: Wednesday, May 23, 2018
- CPS PAT#2: Wednesday, December 5, 2018
- CPS PAT#3: Wednesday, October 9, 2019
- CPS PAT#4: Wednesday, June 3, 2020



Project Development & Environment Study

we are here!

Engineering

- Traffic/Interchange Access Report (IAR)
- Re-evaluate corridor study findings
- Develop alternatives as needed
- Engineering Analysis

Environment

- Biscayne Bay
- Section 4(f)
- Noise
- Historic resources
- Social impacts

Documentation

- Type II Categorical Exclusion
- Systems Interchange Modification Report (SIMR)
- Preliminary Engineering Report
- Phased Improvements
- Future Cost Estimate

Public Involvement

- Public Meetings (Kick Off, Alternatives Workshop, Public Hearing)
- Project Advisory Team
- Community Advisory Group
- Stakeholder/Small Group Meetings
- Elected and agency official coordination



Alternatives Development

No Build - Build Alternatives

PD&E Alternatives will build off the Corridor Planning Study Refined Build Concept and will evaluate:

1. Direct Connections to the I-95 Express Lanes
2. Interchange Improvements
 - NW 12 Avenue
 - N Miami Avenue
 - Biscayne Boulevard
 - SR 907/ Alton Road
3. Surface Street Improvements
4. Transportation Systems Management and Operations (TSM&O) Elements
5. Multimodal
 - Enhance transit opportunities
 - Dedicated pedestrian and bicycle facilities



**PAT Meeting #2 after
Alternatives Development**

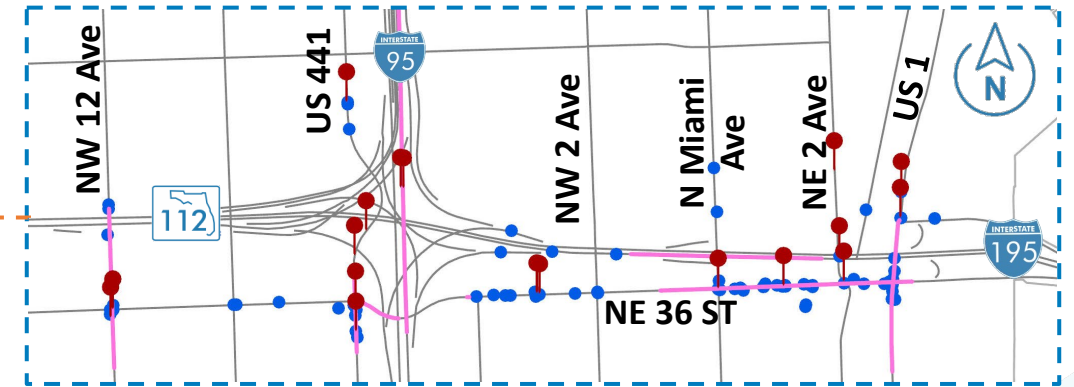
Safety

Crash Data

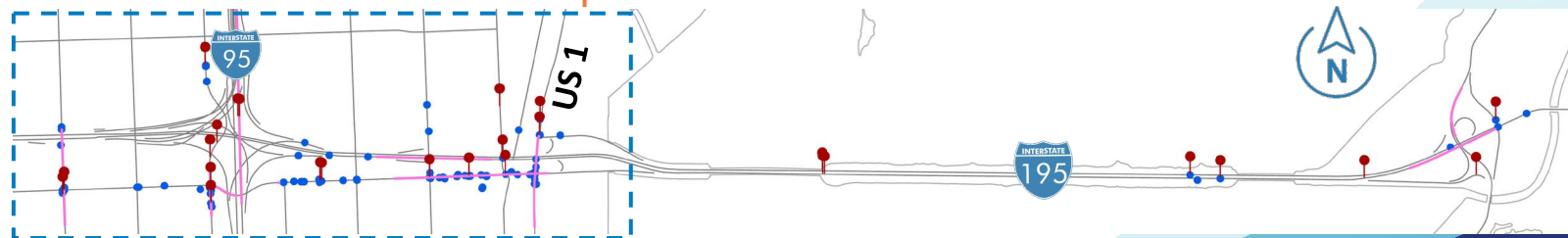
- 3,461 Total 5-Year Crashes (2015-2019)
- FDOT High Crash List
 - Number of Segments: 7
 - Number of Spots: 37

Safety Analysis

- Safety Analysis Guidebook for PD&E Studies
- Quantitative Safety Analysis per Interchange Access Request User Guide (IARUG)
- Target Zero
- Phased Improvements



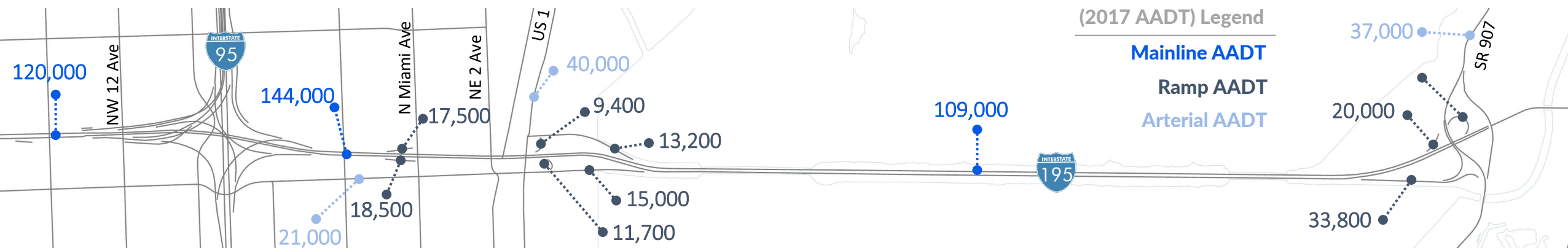
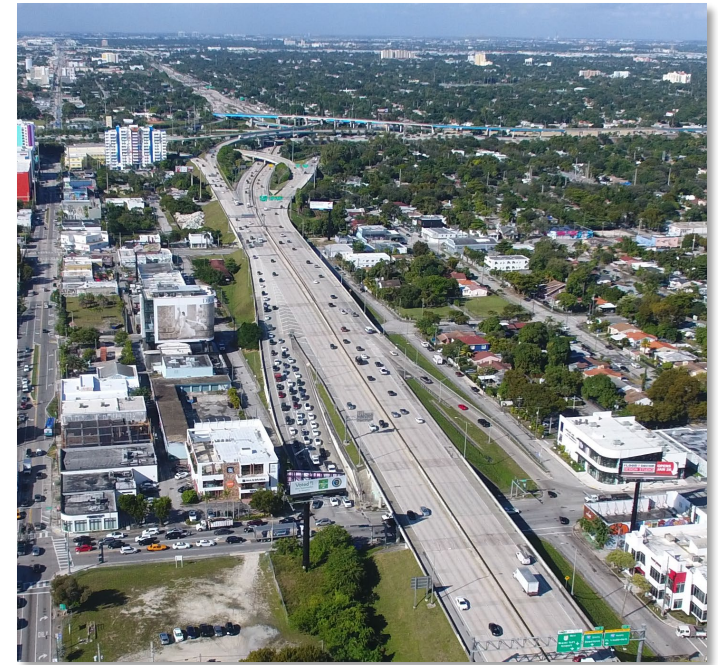
- Legend
- Pedestrian/Bicycle Crashes
 - High Crash Segment
 - Fatal Crash



SR 907

Traffic

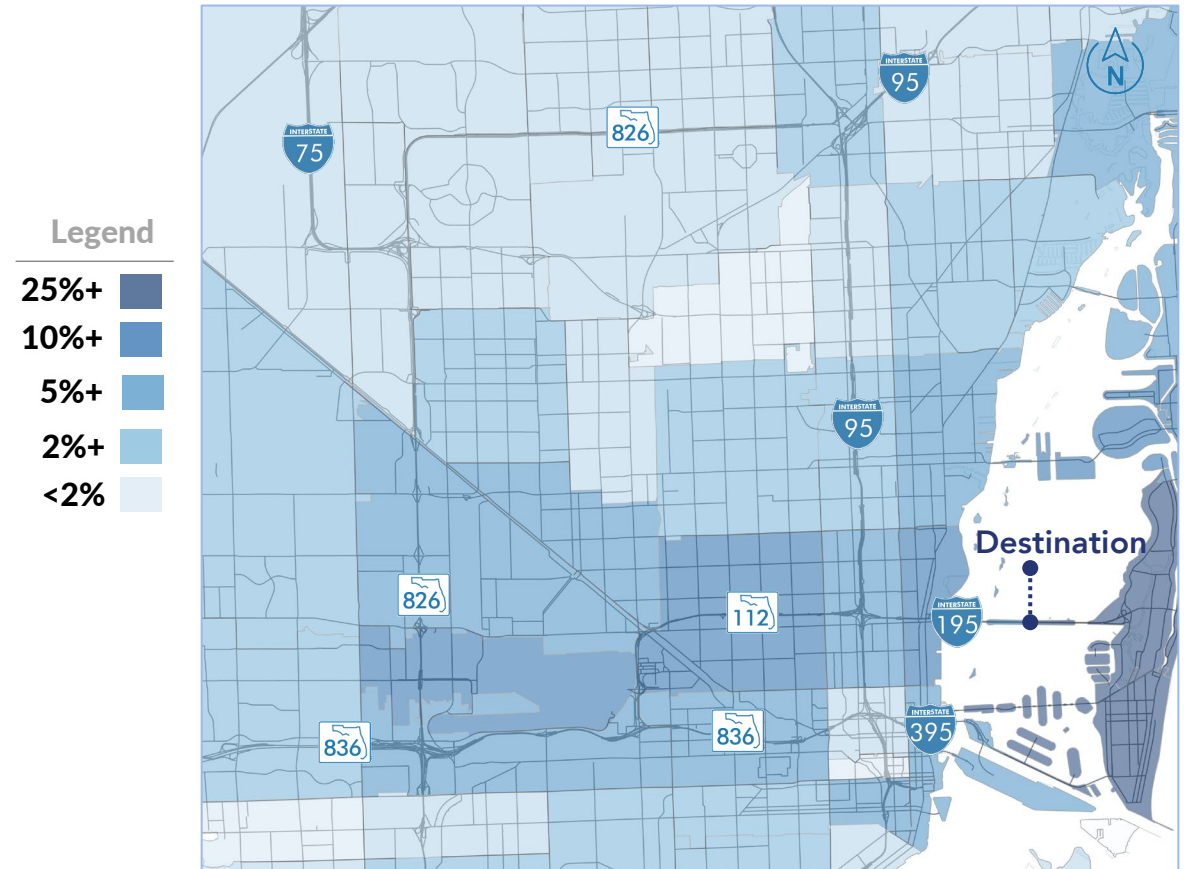
- Traffic Data
- Surface Street Analysis
 - Queue Management
 - Multimodal Improvements
 - Phased Improvements
- Systems Interchange Modification Report (SIMR)
- Project Traffic Analysis Report (PTAR)



Traffic Forecasting

- Travel Demand Model
 - 2015/2045 SERPM 8.522
- Base Year 2015 Scenario Update and Calibration
- Traffic Operational Analysis
 - Existing: 2022
 - Opening Year: 2030
 - Design Year: 2050

Gradient/Heat Map - Origin Zip Code to I-195 (Destination)



Source: Wejo Connected Vehicles Data

Environment

Biscayne Bay

- Aquatic Preserve
- Critical Habitat for Manatee
- Outstanding Florida Water (50% greater treatment)

Essential Fish Habitat

- Seagrass, Corals, Mangroves and many other types
- Habitat Areas of Particular Concern
- In-water surveys conducted in September

U.S. Fish and Wildlife Services Consultation Areas

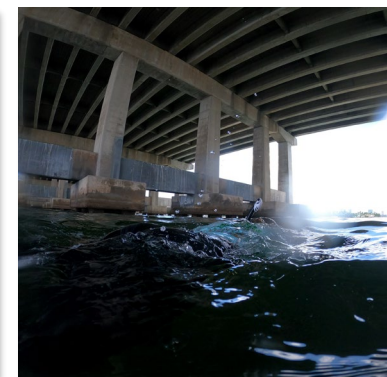
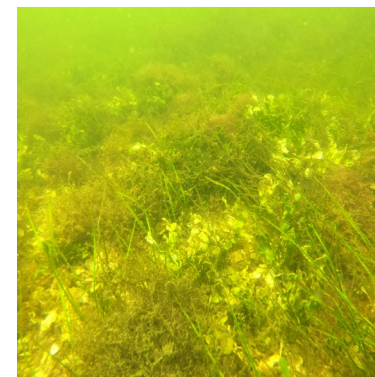
- Manatee
- Florida Bonneted Bat potential habitat characterization
- Snail Kite, Piping Plover, Crocodile and Atlantic Coastal Plants

Water Quality

- Biscayne Sole Source Aquifer

Resiliency

- Coordination with ongoing resiliency projects and goals for the area



Environment

Recreational Section 4(f)

- Moore Park

Special Populations

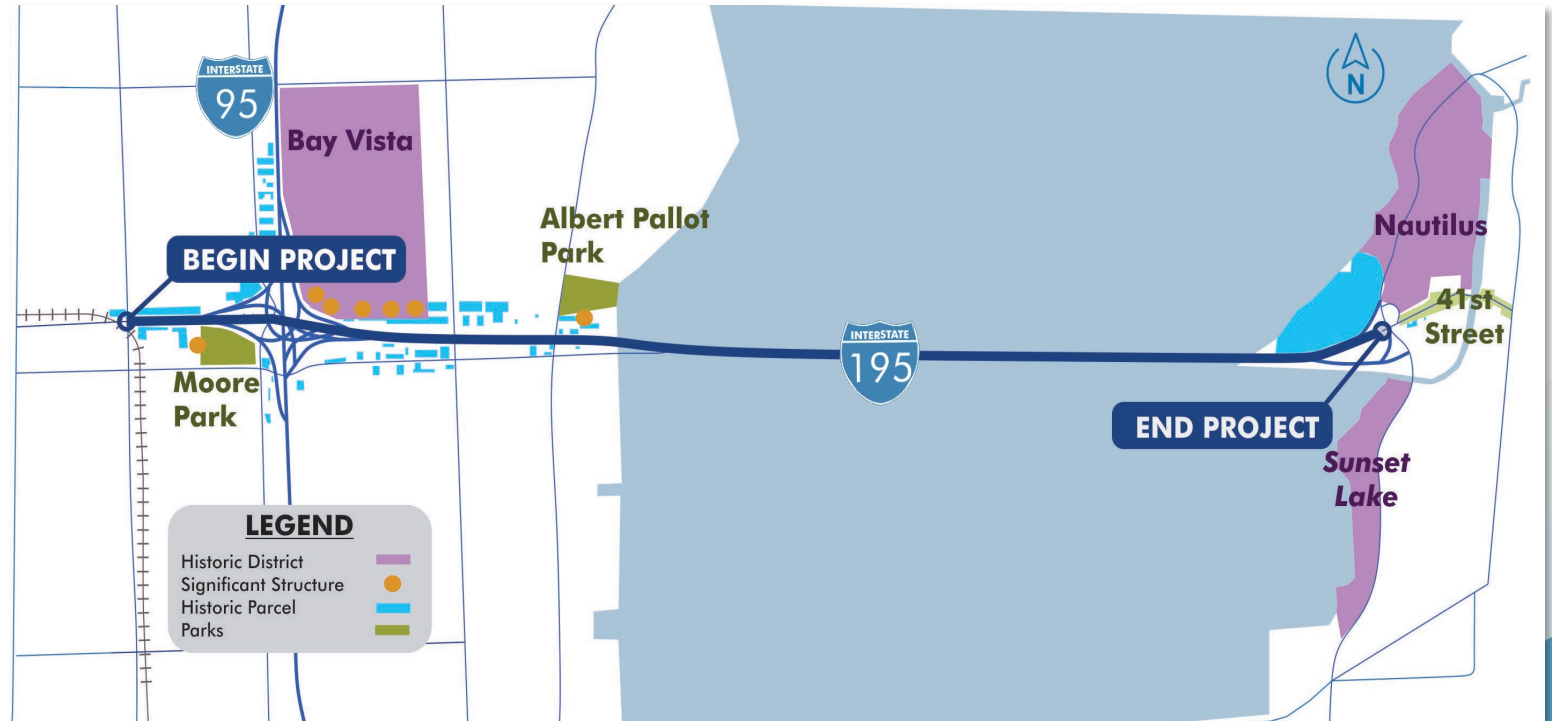
- 21% below poverty line
- 84% minority

Community

- Adjacent residential and business land uses

Cultural Resources

- Historic Districts
 - The Bay Vista
 - Nautilus
 - Sunset Lake
 - 41st Street
- Historic resources
 - 6+ individually significant resources
 - 170 previously recorded historic resources, 800+ unrecorded historic resources



Traffic Noise Contours (Sample)



Noise

- Two existing noise barriers
- Multiple sensitive noise sites
 - High rise residential
 - Low density residential
 - Recreational resources
- Evaluate noise impacts from the project and determine if additional noise abatement is warranted
- Evaluate potential construction noise and vibration impacts
- Construction Noise & Vibration (Mt. Sinai Medical Center)

Projects in the Area

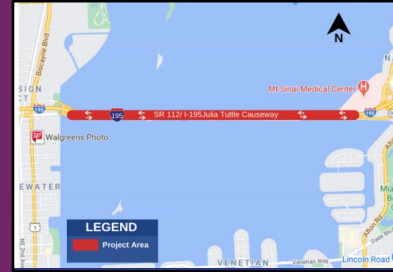
FDOT Golden Glades Interchange Enhancement Project



Tri-Rail Downtown Miami Link Extension



I-195/SR 112 Julia Tuttle Causeway Bus Lane on Shoulder Under Construction



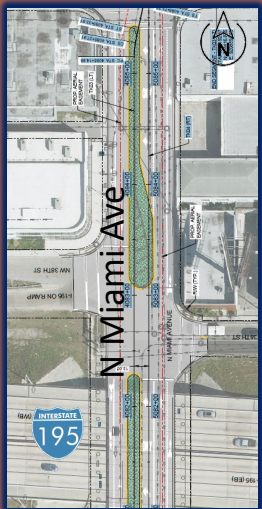
SR 907/Alton Road Reconstruction



BEGIN PROJECT

END PROJECT

SMART Plan: Beach Corridor



NW/NE 36 Street Multimodal Corridor Study Est. Completion Dec 2022



Area-wide intersection improvements

FDOT I-395/SR 836/I-95 Design-Build Project



City of Miami Beach 41 St Streetscape & RRR





Next Steps

- Agency and Public Kick Off Meetings – Early 2023
- Community Advisory Group (CAG) – Early 2023
- Traffic Modeling and Analysis
- Next PAT Meeting after alternatives are developed

Contact Us

Ivette Funtanellas, P.E.

Consultant Management
FDOT D6
1000 NW 111 Av,
Room 6251 Miami, FL 33172
(305) 470-5270

Ivette.Funtanellas@dot.state.fl.us

Robert Linares, P.E.

Consultant Project Manager
Metric Engineering, Inc.
13940 SW 136th St. Suite 200
Miami, Florida 33186
(305) 235-5098

Robert.Linares@metriceng.com

Alicia Gonzalez

Community Outreach Specialist
Media Relations Group, LLC
14707 South Dixie Hwy, Suite 404
Miami, FL 33176
(786) 280-6645

agonzalez@mrgmiami.com



<https://www.fdotmiamidade.com/i195pdestudy.html>



Interstate 195 PD&E Study

I-195/SR 112 From NW 12th Ave to Alton Road/SR 907

Thank you!

