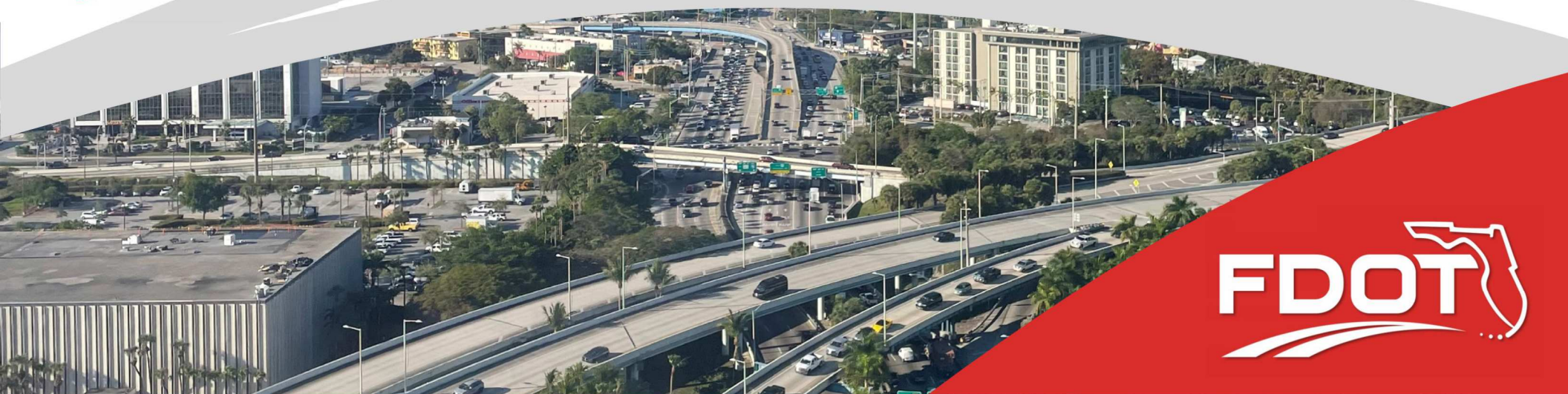
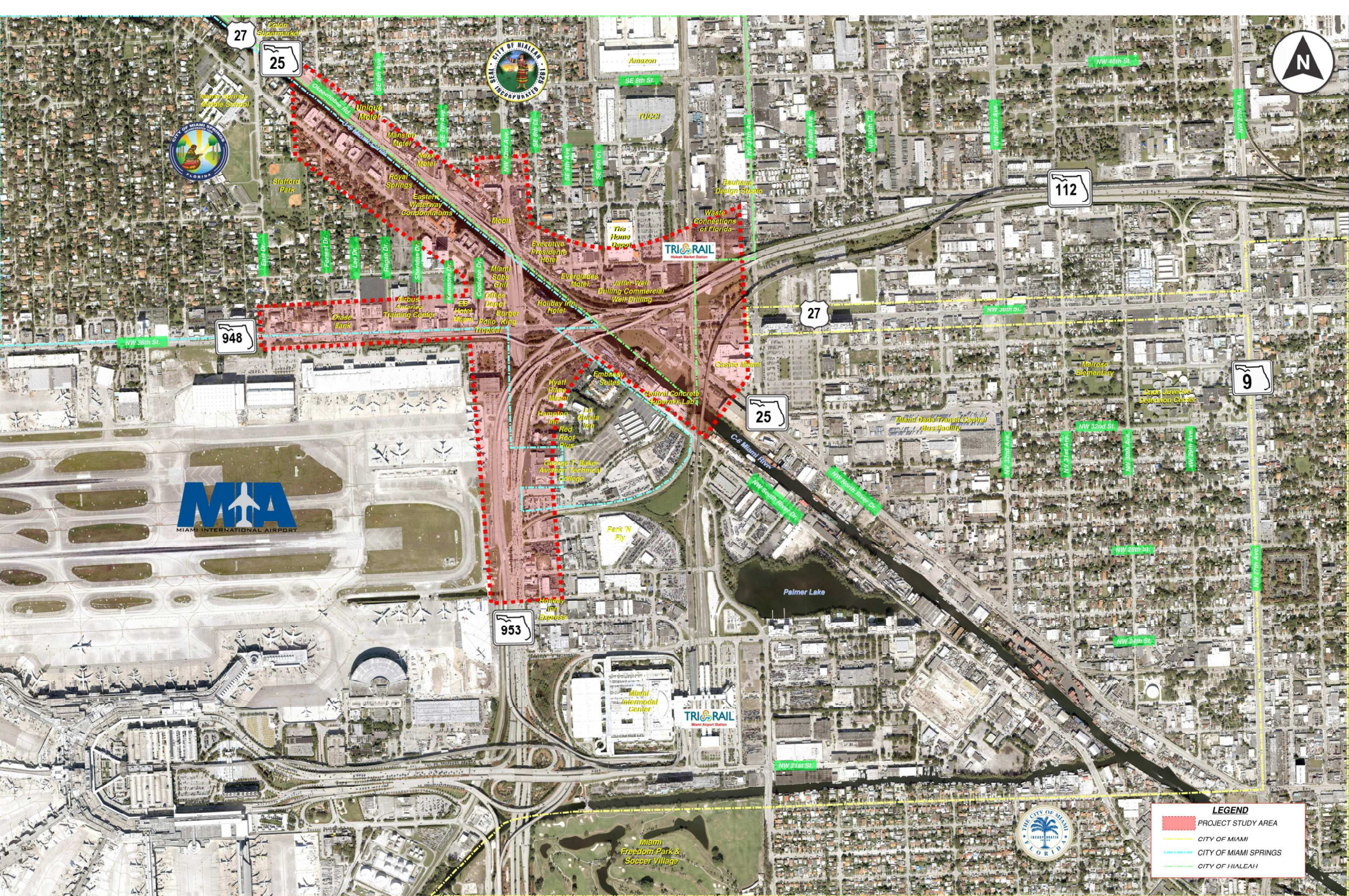


WELCOME

**STATE ROAD (SR) 953/NW 42 AVENUE WITH SR 948/NW 36 STREET
AND SR 25/US 27/OKEECHOBEE ROAD (IRON TRIANGLE)
PROJECT DEVELOPMENT AND ENVIRONMENT (PD&E) STUDY**





LEGEND

- PROJECT STUDY AREA
- CITY OF MIAMI
- CITY OF MIAMI SPRINGS
- CITY OF HIALEAH



IRON TRIANGLE PD&E STUDY
 SR 953/NW 42nd Avenue - SR 948/NW 36th Street - SR 25/Okeechobee Road
 Project Development and Environment (PD&E) Study
 Miami Dade County, Florida
 FPID NO.: 438521-1-22-01
 ETDM NO.: 14472

PROJECT LOCATION MAP



WHAT IS A PD&E STUDY?

A Project Development and Environment (PD&E) Study is a blending of engineering analysis, environmental analysis, and public involvement activities. The process is used by engineers and planners to determine the location and conceptual design of the preferred roadway improvements.



Engineering
Identify potential design solutions



Environmental
Evaluate potential impacts to the social, cultural, natural, and physical environments



Public Involvement
Seek Public Input



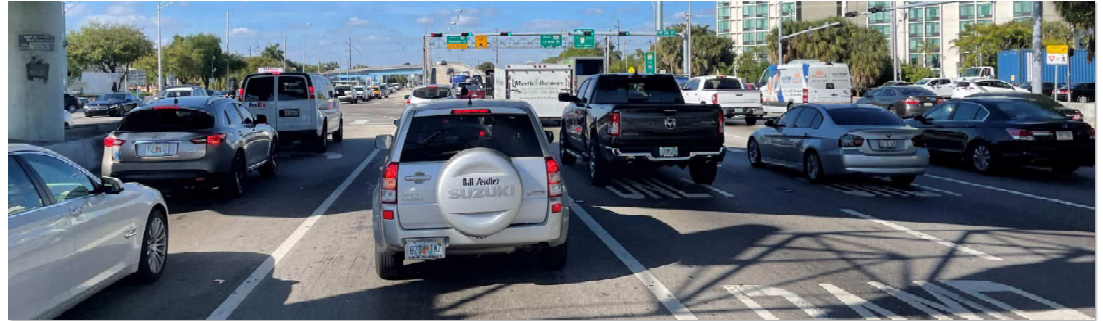
PROJECT PURPOSE AND NEED

PROJECT PURPOSE

- Address operational deficiencies and improve capacity, relieve existing congestion and accommodate projected transportation demand within the Iron Triangle interchange area, specifically as it relates to SR 953/NW 42nd Avenue/LeJeune Road, SR 948/NW 36th Street, and SR 25/US 27/Okeechobee Road
- Improve safety conditions
- Enhance modal interrelationships

PROJECT NEED

- **Capacity/Transportation Demand:** Improve traffic operations/capacity, alleviate existing congestion, and accommodate projected transportation demand
- **Safety:** Improve safety conditions
- **Modal Interrelationship:** Enhance multimodal activities



PROJECT BACKGROUND PLANNING FEASIBILITY STUDY

- 2015 FDOT’s Listening Session – Stakeholders Request
- Planning Study 2020 – Iron Triangle Urban Interchange Planning Mobility Study Recommendations

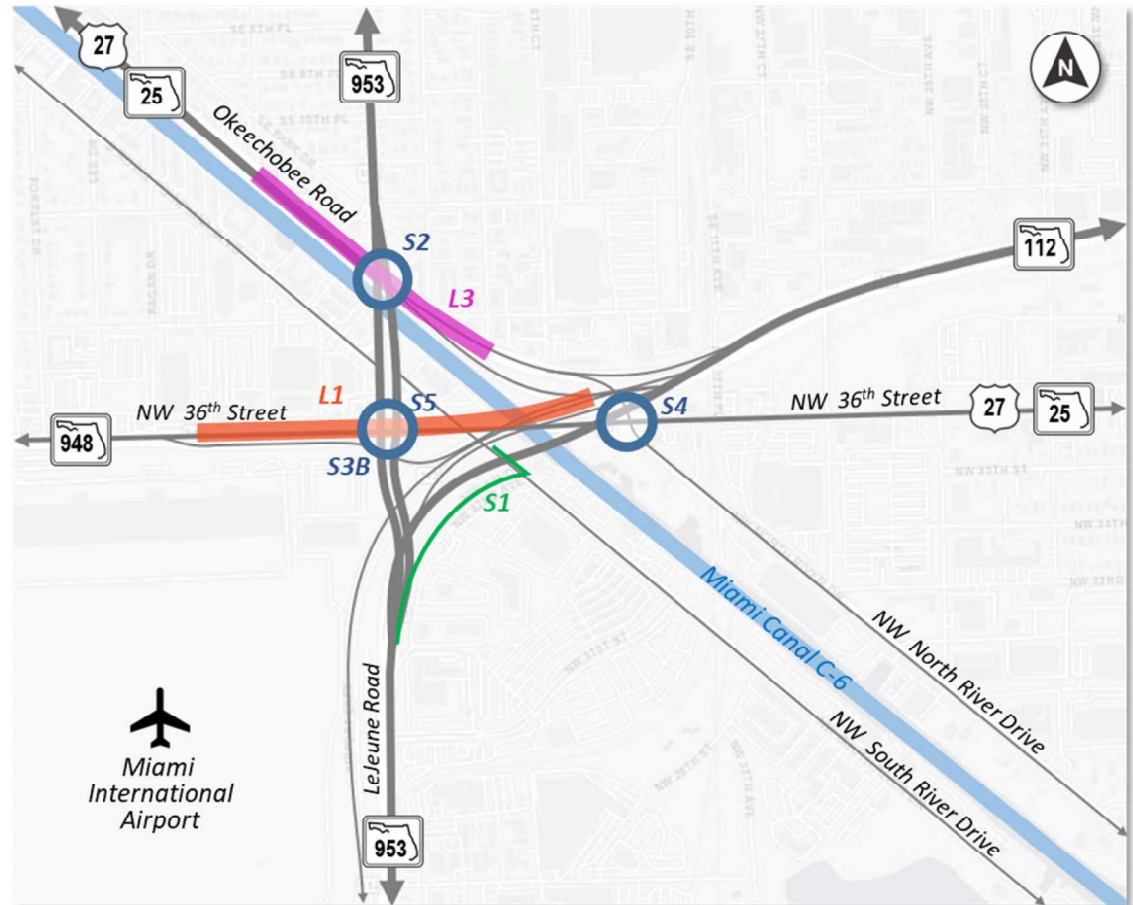
- Long-Term Improvements:

- Concept L1: Extension of WB SR 112 to WB NW 36th Street over LeJeune Road, touching down in the median west of LeJeune Road
- Concept L3: Okeechobee Road overpass at LeJeune Road

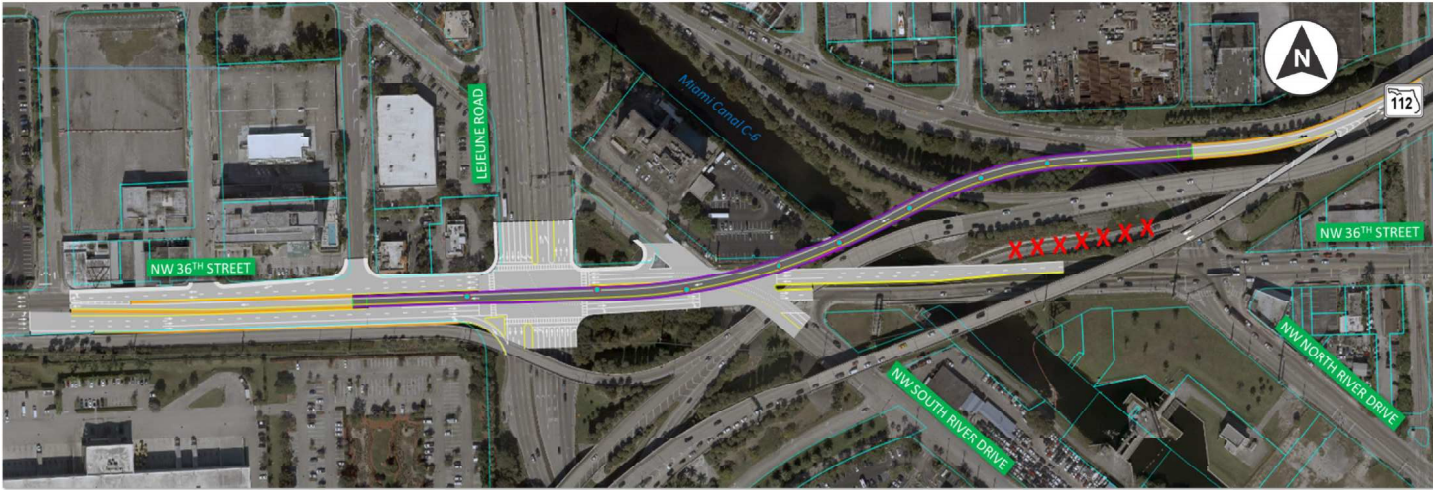
- Short-Term Improvements:

- Concept S1: Provide a 6-foot sidewalk along LeJeune Road spur roadway and NW South River Drive and improve pedestrian railroad crossing
- Concept S2: LeJeune Road and Okeechobee Road intersection improvements
- Concept S3B: LeJeune Road and NW 36th Street intersection improvements
- Concept S4: NW North River Drive and NW 36th Street intersection improvements
- Concept S5: Partial Displaced Left Turn (DLT) at the LeJeune Road and NW 36th Street intersection

The PD&E Study will refine the planning concepts and develop additional improvements to help improve capacity, relieve congestion, and improve overall safety



PROJECT BACKGROUND – PLANNING FEASIBILITY STUDY



Concept L1:
Extension of WB SR 112 to WB NW 36th Street over LeJeune Road, touching down in the median west of LeJeune Road.



Concept L3:
Okeechobee Road overpass at LeJeune Road.

The PD&E Study will refine the planning concepts and develop additional improvements to help improve capacity, relieve congestion, and improve overall safety