



**SR 953/NW 42<sup>nd</sup> Avenue – SR 948/NW 36<sup>th</sup> Street – SR 25/Okeechobee Road  
Iron Triangle Project Development and Environment (PD&E) Study**

FPID No.: 438521-1-22-01 | ETDM No.: 14472

**Public Kickoff Meeting**



February 21, 2024



**FDOT COMPASS**

Focus areas that navigate Florida's transportation system and offer a sustainable future



# Panelists



**Kira Leon, PE**  
FDOT Project Manager



**Julieta Manso, PE**  
Consultant Project Manager



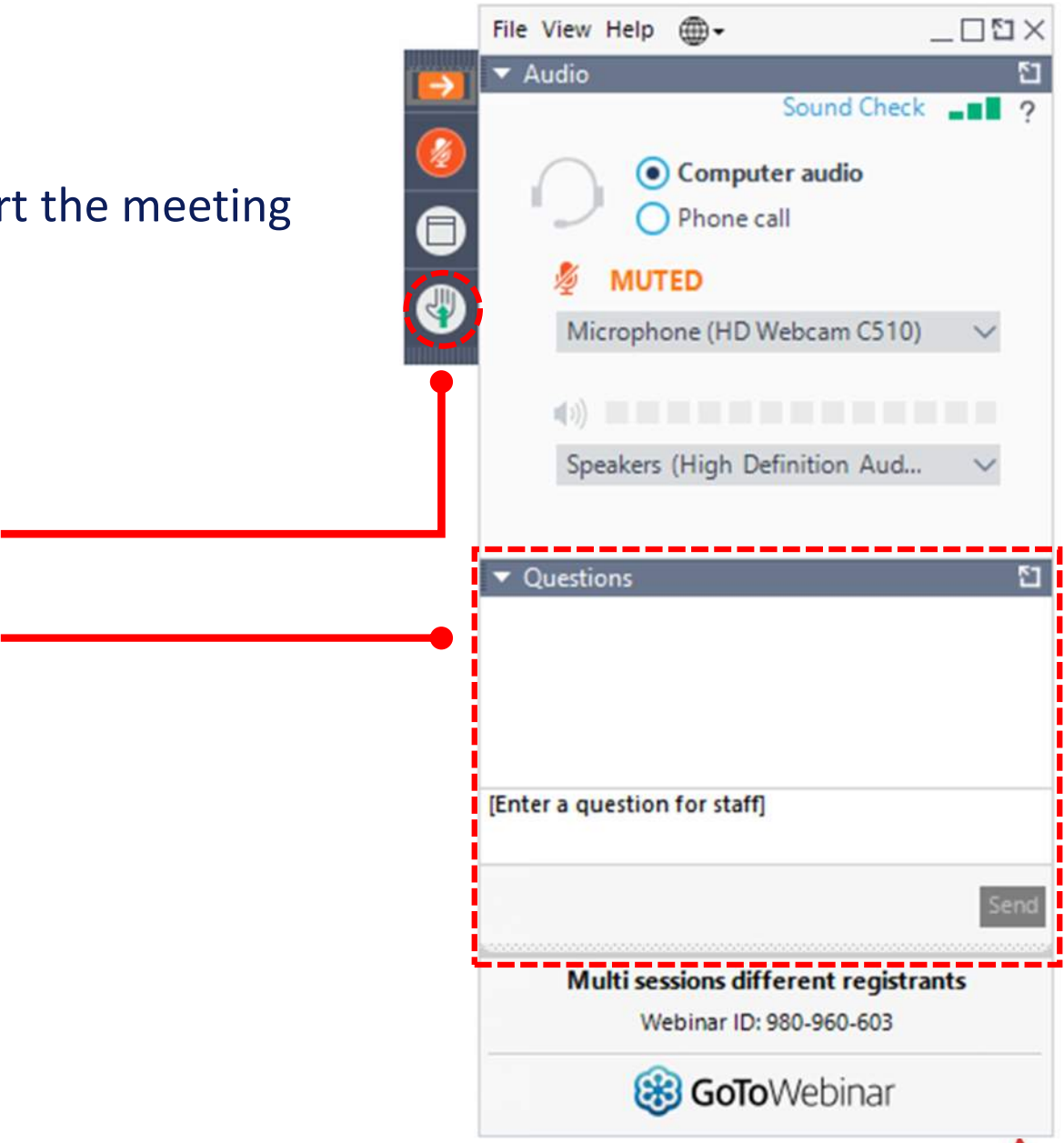
**Dayana Sanjurjo**  
Community Outreach Specialist



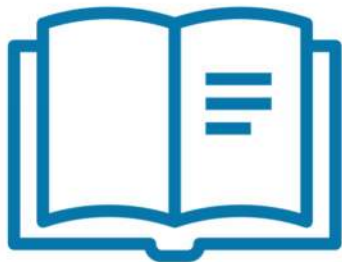
# Rules of Engagement

- Virtual attendees are **automatically muted** to start the meeting
- To provide comments during open discussion period:
  - In-person attendees please fill out a speaker card or raise your hand
  - Virtual attendees use “Raise hand” during comment period, you will be unmuted in order of raising hands
  - Submit comments via the “**Questions**” Box

 **If you are having technical difficulties, please contact:**  
**e: [vsalinas@mrgmiami.com](mailto:vsalinas@mrgmiami.com)**  
**p: 786-614-0050**



Public Notice



Florida Administrative Register



Property owner letters



Email to project contacts list



FDOT website



Newspapers



Social Media

## National Environmental Policy Act (NEPA) Assignment Statement

The environmental review, consultation and other actions required by applicable federal environmental laws for these projects are being, or have been, carried out by the FDOT pursuant to 23 U.S.C. 327 and a Memorandum of Understanding dated May 26, 2022, and executed by the Federal Highway Administration and FDOT.

## Title VI Non-Discrimination Compliance

Public participation at this public meeting is encouraged and solicited without regard to race, color, national origin, age, sex, religion, disability, or family status.

Persons wishing to express any concerns about Title VI may do so by contacting either:

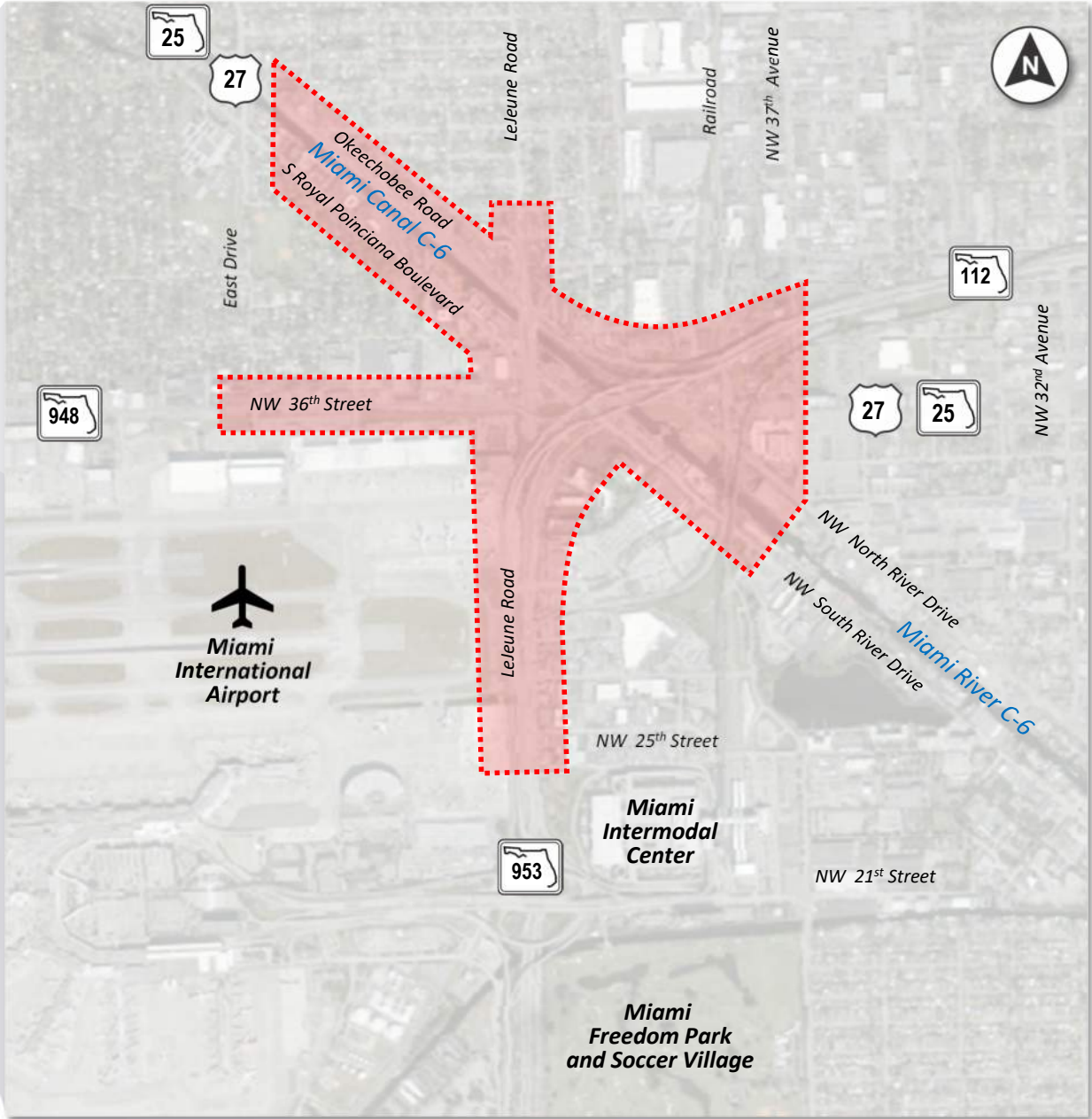
Florida Department of Transportation  
District Six Office  
District Six Interim Title VI Coordinator  
**Tish Burgher**  
100 NW 111th Avenue  
Miami, Florida 33172  
(305) 470-5277  
[Tish.Burgher@dot.state.fl.us](mailto:Tish.Burgher@dot.state.fl.us)

Florida Department of Transportation  
Tallahassee Office  
State Title VI Coordinator  
**Stefan Kulakowski**  
605 Suwannee Street  
Tallahassee, Florida 32399  
(850) 414-4742  
[Stefan.Kulakowski@dot.state.fl.us](mailto:Stefan.Kulakowski@dot.state.fl.us)



# Project Description

- Roadway Network:
  - SR 953/NW 42<sup>nd</sup> Avenue/LeJeune Road
  - SR 948/NW 36<sup>th</sup> Street
  - SR 25/US 27/Okeechobee Road
  - SR 112/Airport Expressway
  - NW North River Drive
  - NW South River Drive
  - S Royal Poinciana Boulevard
- Jurisdictions:
  - Miami-Dade County
  - City of Hialeah
  - City of Miami Springs
  - City of Miami
  - Village of Virginia Gardens
- Points of Interest and Major Generators:
  - Miami International Airport
  - Miami Intermodal Center
  - Miami MetroRail
  - Tri-Rail Hialeah Market Station
  - Florida East Coast Railway Hialeah Yard
  - Miami Freedom Park and Soccer Village





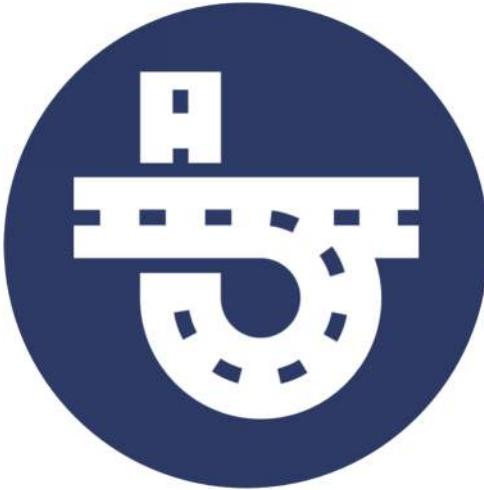
# What is a PD&E Study?

A Project Development and Environment (PD&E) Study is a blending of engineering analysis, environmental analysis, and public involvement activities. The process is used by engineers and planners to determine the location and conceptual design of the preferred roadway improvements.



PD&E Study Process

A Project Development & Environment (PD&E) Study  
**is a process to analyze a transportation project**  
that consists of 3 elements:



**Engineering**

Identify potential design solutions



**Environmental**

Evaluate potential impacts to the social, cultural, natural, and physical environments



**Public Involvement**

Seek Public Input



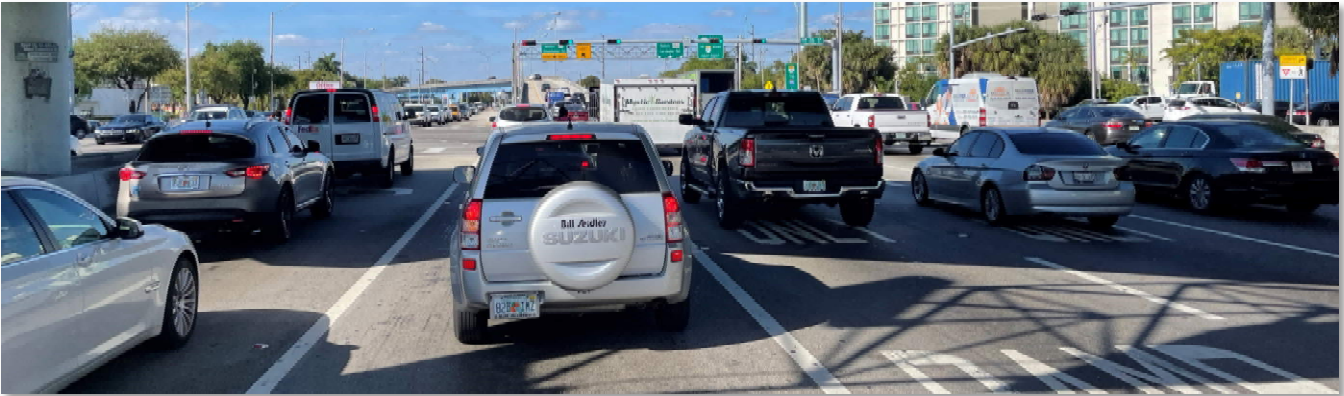
# Purpose & Need

## Project Purpose

- Address operational deficiencies and improve capacity, relieve existing congestion and accommodate projected transportation demand within the Iron Triangle interchange area, specifically as it relates to SR 953/NW 42nd Avenue/LeJeune Road, SR 948/NW 36th Street, and SR 25/US 27/Okeechobee Road
- Improve safety conditions
- Enhance modal interrelationships

## Project Need

- **Capacity/Transportation Demand:** Improve traffic operations/ capacity, alleviate existing congestion, and accommodate projected transportation demand
- **Safety:** Improve safety conditions
- **Modal Interrelationship:** Enhance multimodal activities





# Project Background

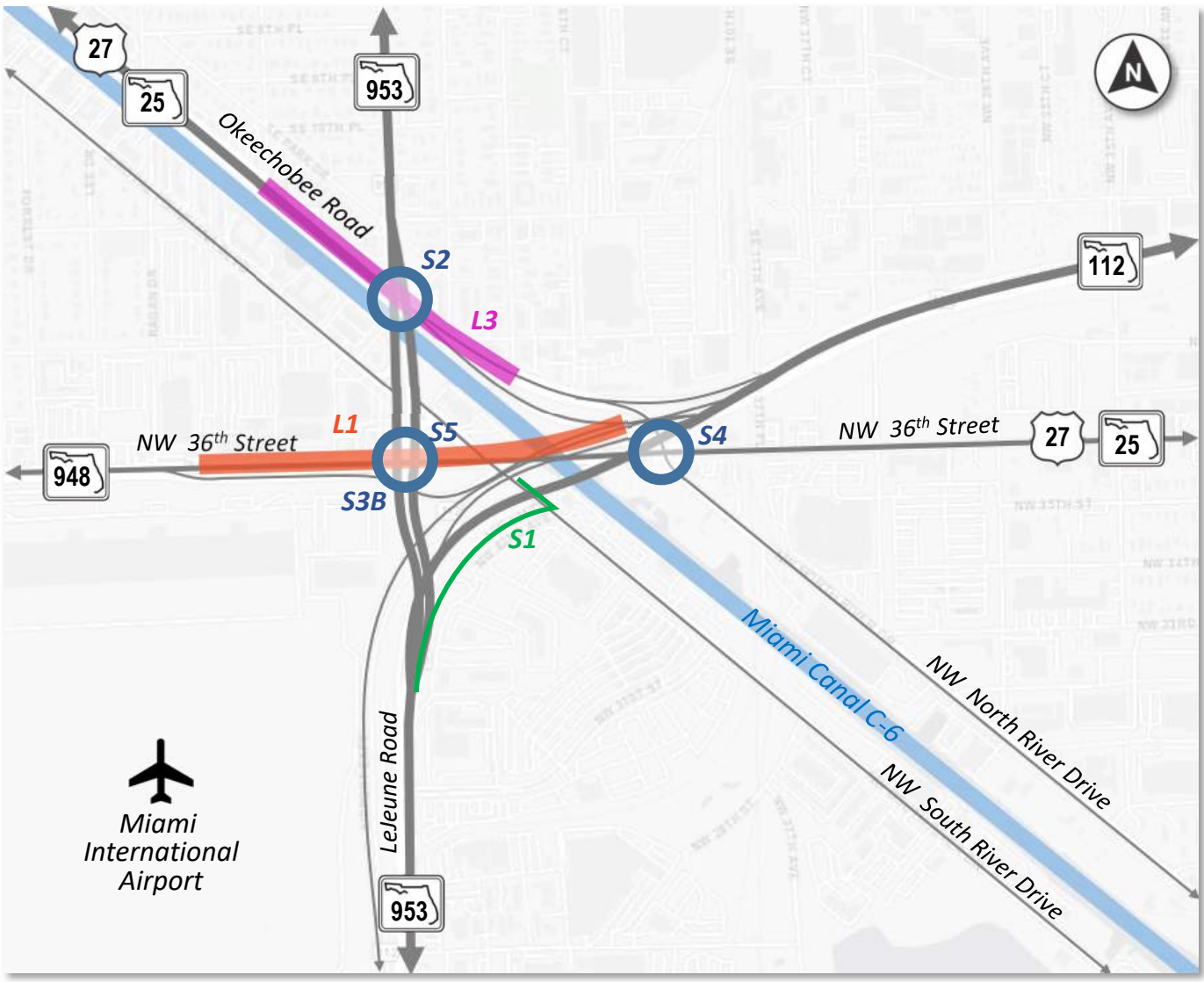
- 2015 FDOT’s Listening Session – Stakeholders Request
- Planning Study 2020 – Iron Triangle Urban Interchange Planning Mobility Study Recommendations

### Long-Term Improvements:

- Concept L1: Extension of WB SR 112 to WB NW 36<sup>th</sup> Street over LeJeune Road, touching down in the median west of LeJeune Road
- Concept L3: Okeechobee Road overpass at LeJeune Road

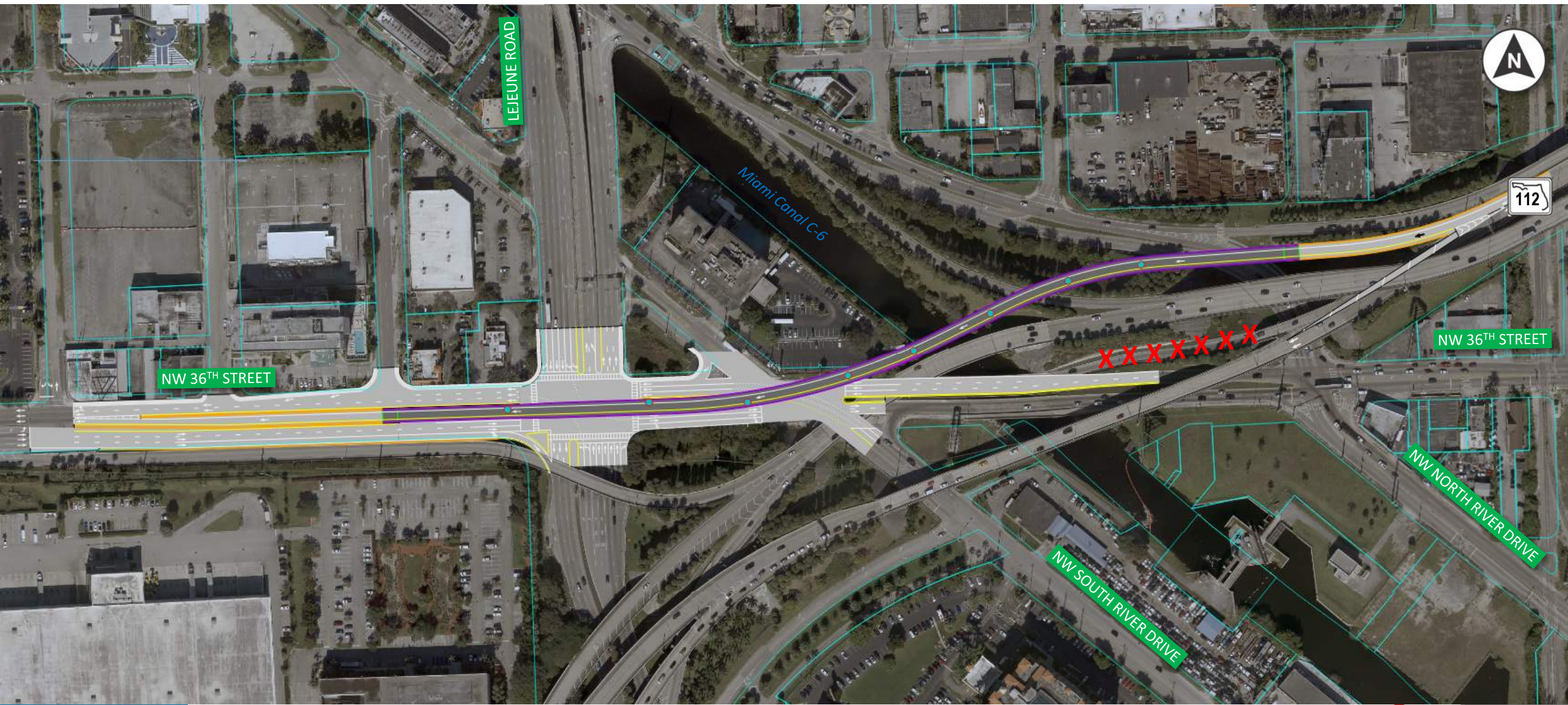
### Short-Term Improvements:

- Concept S1: Provide a 6-foot sidewalk along LeJeune Road spur roadway and NW South River Drive and improve pedestrian railroad crossing
- Concept S2: LeJeune Road and Okeechobee Road intersection improvements
- Concept S3B: LeJeune Road and NW 36th Street intersection improvements
- Concept S4: NW North River Drive and NW 36th Street intersection improvements
- Concept S5: Partial Displaced Left Turn (DLT) at the LeJeune Road and NW 36th Street intersection



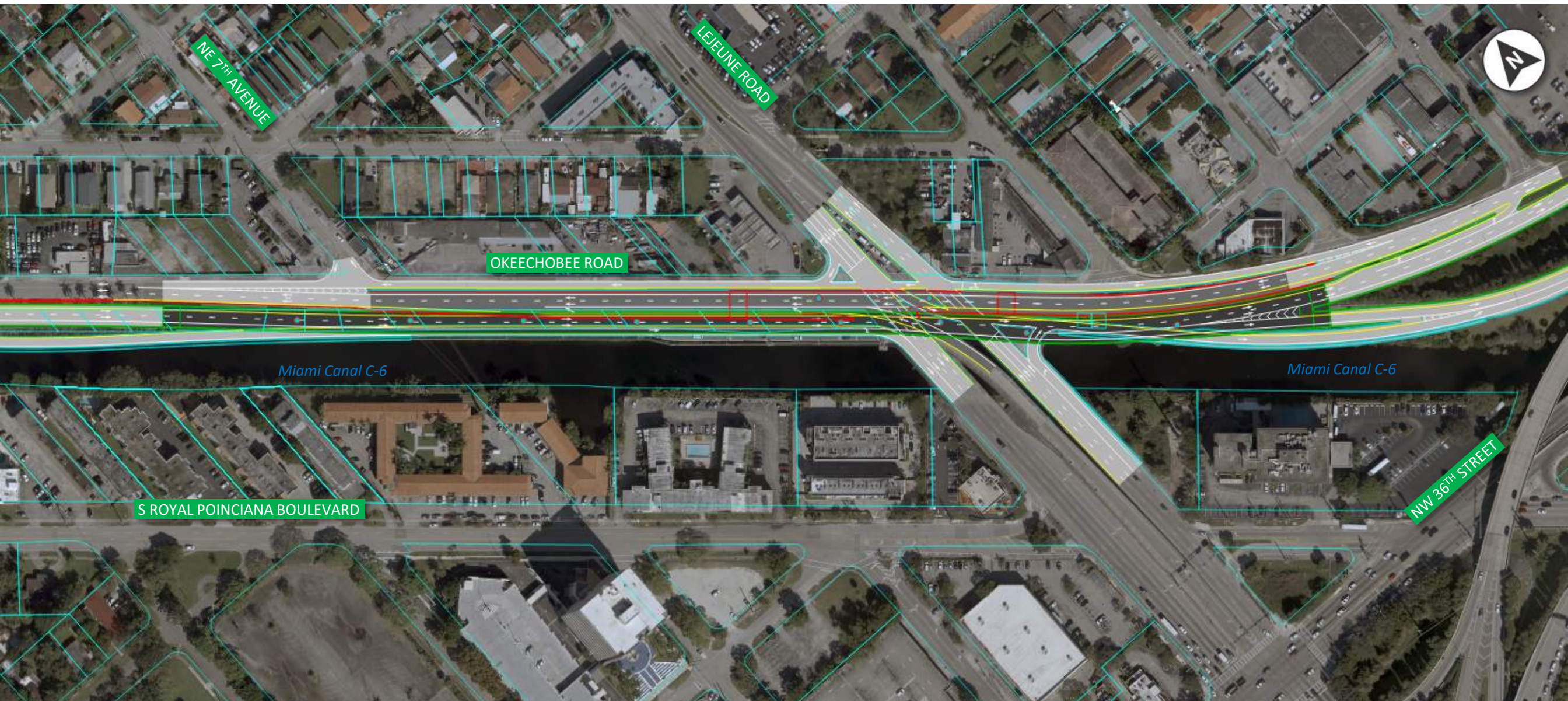


L1: Extension of WB SR 112 to WB NW 36<sup>th</sup> Street over Lejeune Road – *Planning Study Concept*





### L3: Okeechobee Road overpass at LeJeune Road – *Planning Study Concept*





## Traffic Operations

- Inadequate Capacity
  - 2050 No Build – All intersections operate at LOS F
  - Queuing along SR 112 mainline
  - Miami Freedom Park and Soccer Village will generate additional 3,900 vph on a typical weekday, PM peak
  - Future congestion will increase without mitigation
- Truck Percentages 7% to 23%
- Additional Improvements are required to achieve acceptable LOS in design year (2050) and facilitate property access

The PD&E Study will refine the planning concepts and develop additional improvements to help improve capacity, relieve congestion, and improve overall safety





## Engineering & Alternatives Development

- **No Build:** Assumes no improvements are made and does not address any corridor needs
- Transportation System Management and Operations (**TSM&O**)
- **Build Alternatives:** PD&E Alternatives will build off from the Corridor Planning Study and develop refined Build Concept to evaluate:
  - Urban Interchange Improvements
  - Surface Street Improvements
  - Multimodal Improvements







## Environmental Considerations



### Social and Economic

- Land Use Changes
- Social
- Relocation Potential
- Farmlands
- Aesthetic Effect
- Economic
- Mobility



### Cultural Effects

- Historic Sites/Districts
- Archeological Sites
- Recreation Areas
- Section 4(f) Potential



### Natural Resources

- Wetlands
- Aquatic Preserves
- Water Quality and Quantity
- Wild and Scenic Rivers
- Floodplains
- Protected Species and Habitat
- Essential Fish Habitat
- Coastal and Marine



### Physical Effects

- Traffic Noise
- Air Quality
- Contamination
- Infrastructure

# Public Involvement

- Public Meetings:
  - Public Kick-off Meeting:
    - February 21, 2024
  - Alternatives Public Workshop:
    - Summer 2024 (Tentative)
  - Public Hearing:
    - Spring 2025 (Tentative)
- Project Advisory Team Meetings
- Miami-Dade County TPO Presentations
- Submit Comments to:
  - Kira Leon, PE at [kira.leon@dot.state.fl.us](mailto:kira.leon@dot.state.fl.us)
- Visit the project website:
  - [https://www.southflroads/SR953\\_SR948\\_and\\_SR25](https://www.southflroads/SR953_SR948_and_SR25)

Public comments and questions are welcomed at any time throughout the study.

GET INVOLVED!  
STAY INFORMED!

### Social Media

Facebook: [MyFDOTSEFL](#)  
 Instagram: [myfdot\\_sefl](#)  
 X: [@MyFDOT\\_SEFL](#)

**FACT SHEET | February 2024**

**STATE ROAD (SR) 953/NW 42 AVENUE WITH SR 948/NW 36 STREET AND SR 25/US 27/OKEECHOBEE ROAD (IRON TRIANGLE)**  
 Project Development and Environment (PD&E) Study

County/State: Miami-Dade County, Florida  
 Financial Management Number: 438521-1-22-01  
 Federal Aid Project Number: TBD  
 Efficient Transportation Decision Making (ETDM): 14472

**OVERVIEW**

The Iron Triangle is an urban interchange primarily comprised of the intersection of SR 953/NW 42 Avenue, SR 948/NW 36 Street, and SR 25/US 27/Okeechobee Road. The interchange also features the Greater Miami Expressway Agency (GMX) SR 112/Airport Expressway, which is one of the principal highways providing access to and from Miami International Airport (MIA), and connects to other important transportation facilities and destinations such as Interstate 95 (I-95) and Miami Beach. In addition, the ramps of the Iron Triangle interchange cross over the Miami Canal (C-6). The project traverses through the City of Miami Springs, City of Hialeah, City of Miami and Unincorporated Miami-Dade County.

The purpose of this project is to address operational deficiencies and improve capacity, relieve existing congestion and accommodate projected transportation demand within the Iron Triangle interchange area, specifically as it relates to SR 953/NW 42 Avenue, SR 948/NW 36 Street, and SR 25/US 27/Okeechobee Road. Other goals of the project include improving safety conditions and enhancing modal interrelationships. The need for this project is based on the following criteria:

**GOALS**

- CAPACITY/TRANSPORTATION DEMAND:** Improve traffic operations, add capacity, alleviate existing congestion, and accommodate projected transportation demand.
- SAFETY:** Improve safety conditions
- MODAL INTERRELATIONSHIPS:** Enhance multimodal activity
  - Miami International Airport (MIA)
  - Intercity and long-distance transit access
  - Freight movement
  - Pedestrian accommodations

**WHAT IS A PD&E STUDY?**

During the PD&E phase, the preliminary engineering and documentation required for funding is completed. This includes the review and analysis of potential impacts from the proposed project on the social, economic, natural, physical, and cultural resources in the surrounding environment.

**FUNDING**

The project is included in the FDOT FY 2022-2026 State Transportation Improvement Program (STIP) and is currently funded for the PD&E and Design Phases.

**SCHEDULE**

This PD&E Study started in June 2023 and is expected to be completed by summer 2025. The design phase begins once the PD&E Study is complete.

**PUBLIC INVOLVEMENT**

Public involvement is an extremely important part of a PD&E Study, to inform citizens about the project and provide interested persons an opportunity to be involved in the development of the project. There will be several opportunities to participate in public meetings and stakeholder discussions. The environmental review, consultation, and other actions required by applicable Federal environmental laws for this project are being, or have been, carried out by FDOT pursuant to 23 U.S.C. § 327 and a Memorandum of Understanding dated May 28, 2022, and executed by Federal Highway Administration and FDOT. Public participation is solicited without regard to race, color, national origin, age, sex, religion, disability, or family status. FDOT is committed to ensuring the State's infrastructure serves residents, businesses, and visitors to meet their current and future transportation needs. Benefits of this project include:

**STAY INFORMED**

**FDOT PROJECT MANAGER**  
 Kira Leon, P.E.  
 Florida Department of Transportation  
 1000 NW 111 Ave, Room 6251,  
 Miami, FL 33172  
 Phone: 305.470.5207  
 Email: [kira.leon@dot.state.fl.us](mailto:kira.leon@dot.state.fl.us)

**CONSULTANT PROJECT MANAGER**  
 Julieta Rivero-Manso, P.E.  
 Phone: 305.428.4353  
 Email: [jmanso@hanson-inc.com](mailto:jmanso@hanson-inc.com)

**COMMUNITY OUTREACH SPECIALIST**  
 Dayana Sanjurjo  
 Phone: 305.746.6829  
 Email: [dayana.sanjurjo@dot.state.fl.us](mailto:dayana.sanjurjo@dot.state.fl.us)

**LOCATION MAP**

[www.southflroads.com](http://www.southflroads.com)  
 @MyFDOT\_Miami @MyFDOTMiami





### On-going Coordination

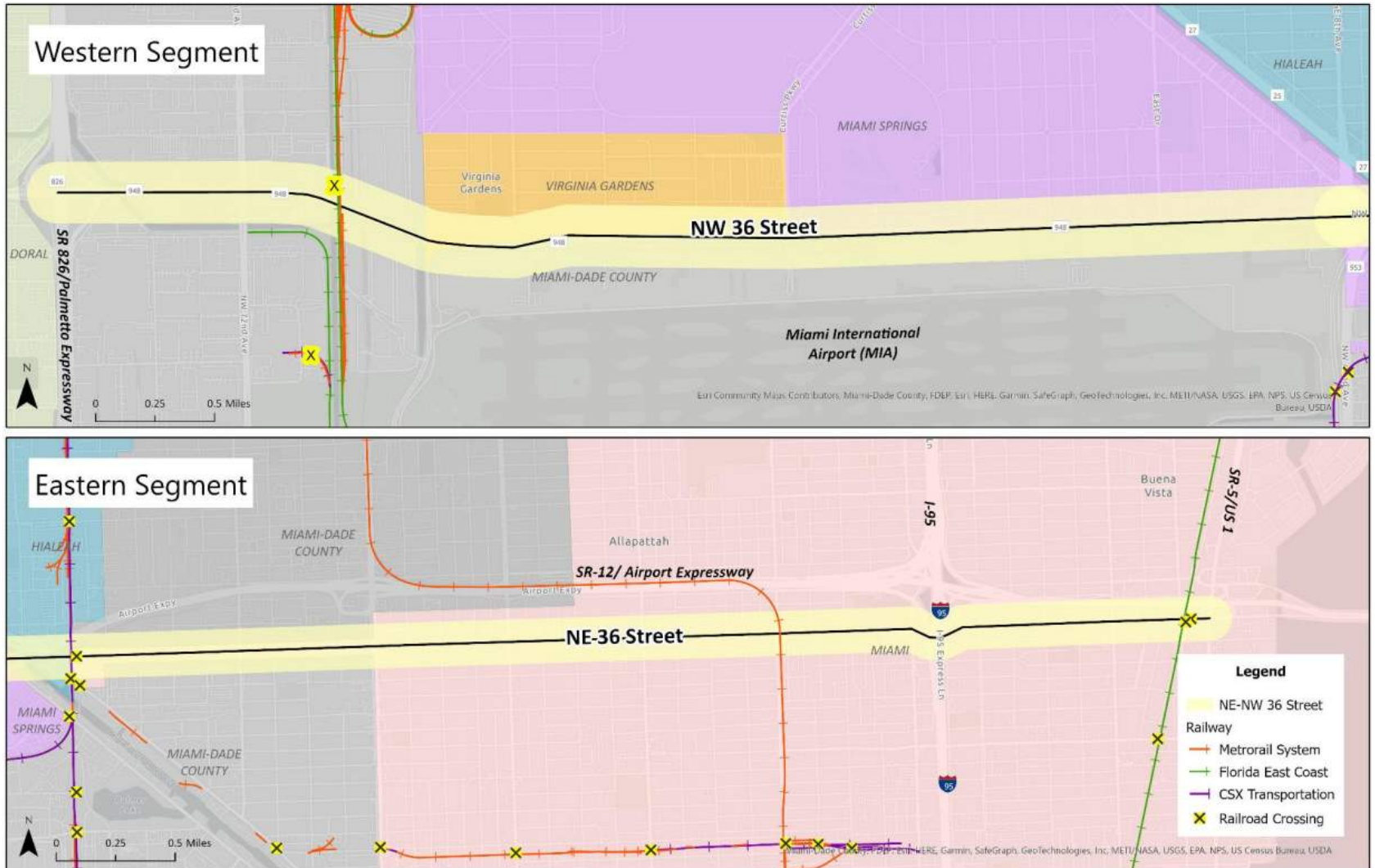
- GMX: *August 18, 2023*
- Village of Virginia Gardens: *October 30, 2023*
- City of Hialeah: *October 31, 2023*
- City of Miami Springs: *November 11, 2023*
- Project Advisory Team Meeting #1: *November 16, 2023*
- Miami Springs City Council: *December 11, 2023*
- Miami-Dade County: *February 12, 2024*



### Other Project within the Area

#### SR 948/NW-NE 36th Street from SR 826/Palmetto Expressway to SR 5/US-1 Multimodal Corridor Study

- The purpose of this study is to identify short-term and long-term transportation needs within the study area, and to provide recommendations to be further evaluated in the PD&E Study Phase.
- The goals of this project are to assess and develop improvements to address existing and future mobility, operational, social, economic, and safety needs along NW-NE 36<sup>th</sup> Street.







**Contact Information**

**Kira Leon, PE**

FDOT Project Manager  
kira.leon@dot.state.fl.us  
(305) 470-5207

**Julieta Manso, PE**

Consultant Project Manager  
JManso@hanson-inc.com  
(305) 428-4353

**Dayana Sanjurjo**

Community Outreach Specialist  
DSanjurjo@mrgmiami.com  
(305) 746-5829

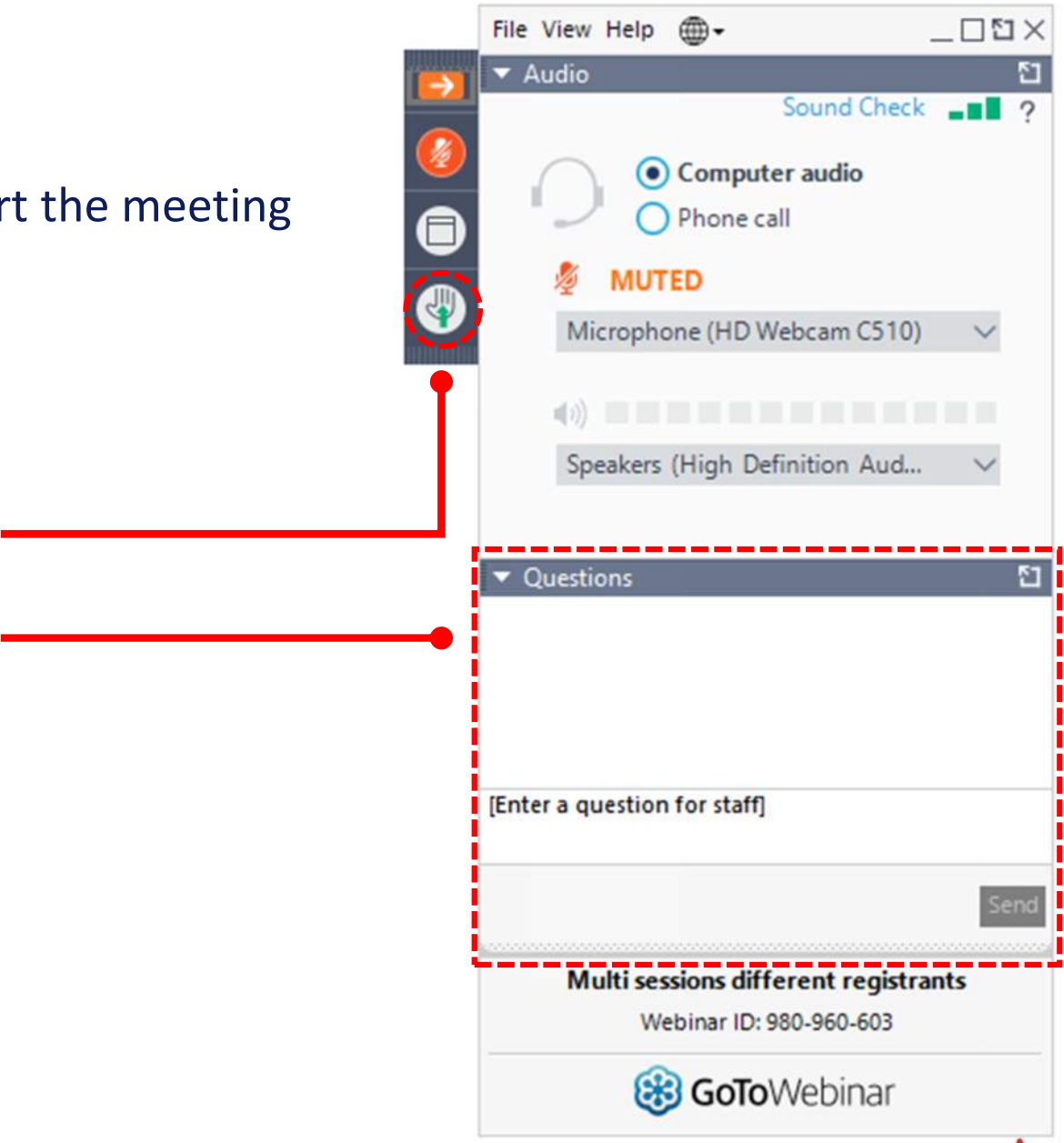




## Question & Answer Session

- Virtual attendees are **automatically muted** to start the meeting
- To provide comments during open discussion period:
  - In-person attendees please fill out a speaker card or raise your hand
  - Virtual attendees use “Raise hand” during comment period, you will be unmuted in order of raising hands
  - Submit comments via the “**Questions**” Box

 **If you are having technical difficulties, please contact:**  
**e: [vsalinas@mrgmiami.com](mailto:vsalinas@mrgmiami.com)**  
**p: 786-614-0050**





SR 953/NW 42<sup>nd</sup> Avenue – SR 948/NW 36<sup>th</sup> Street – SR 25/Okeechobee Road  
Iron Triangle Project Development and Environment (PD&E) Study

**Thank You!**

