

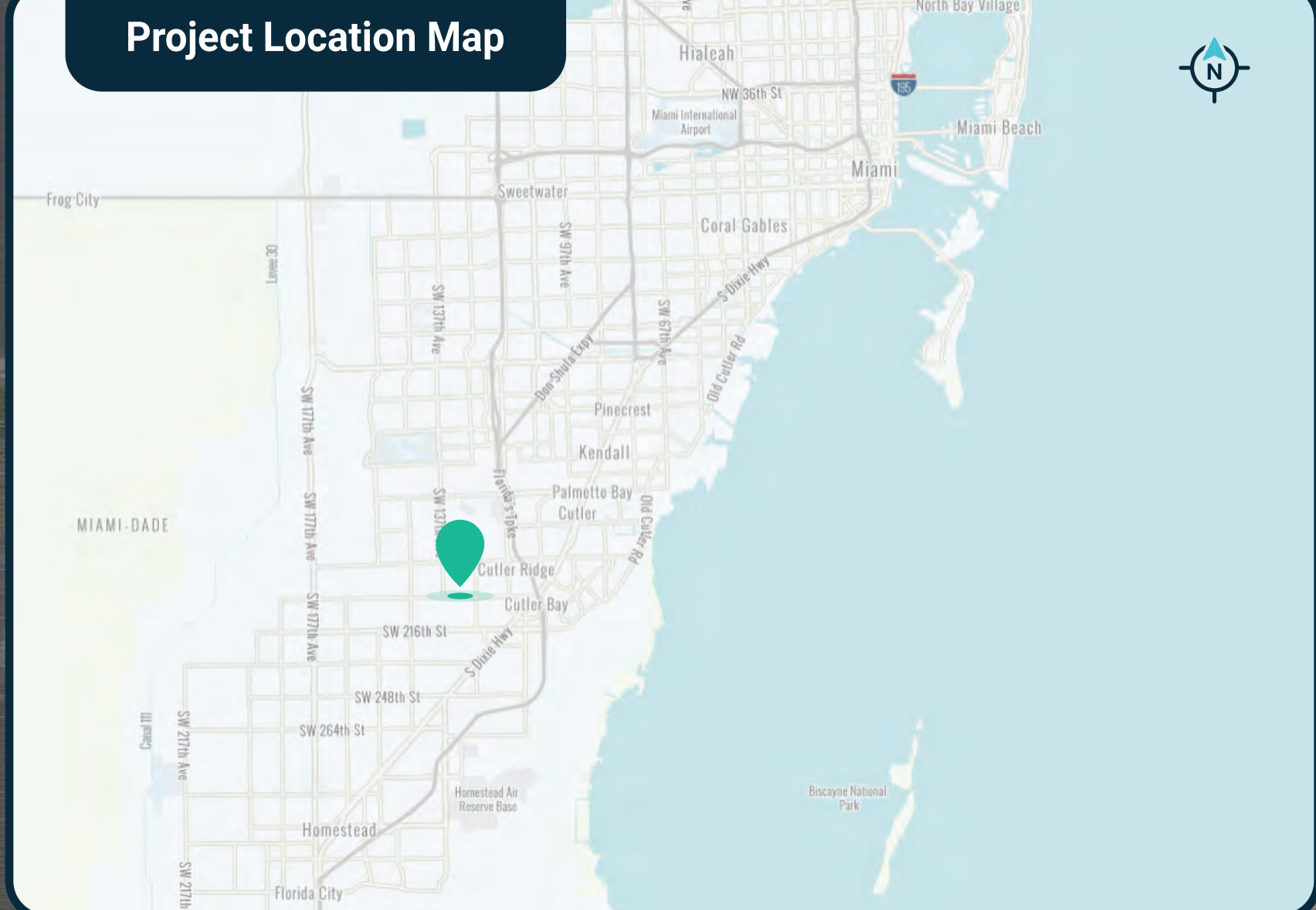


SR 994/Quail Roost Drive PD&E Study

From West of SW 137th Avenue to East of SW 127th Avenue
FM 445804-1-22-01 ETDM No. 14429

Existing Conditions

Project Location Map

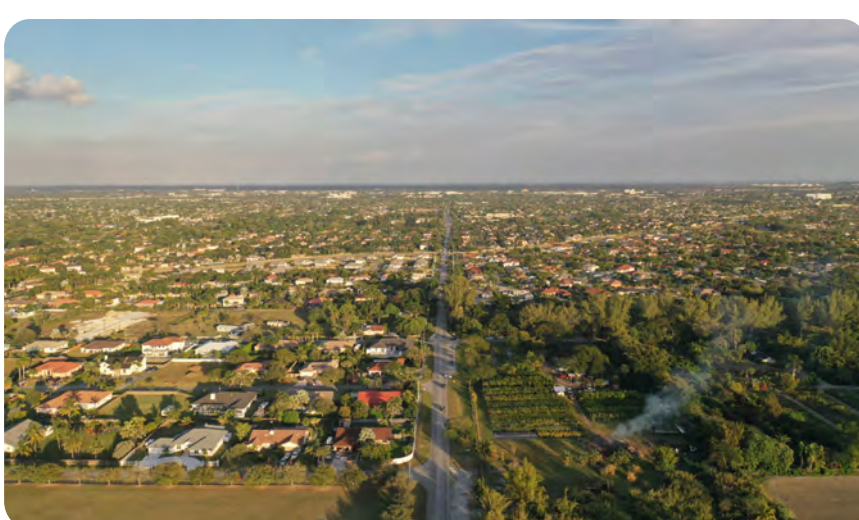


Legend

- Urban Development Boundary
- Existing Sidewalks/Trails
- Existing Bicycle Lanes
- Signalized Intersection
- Historic Resources

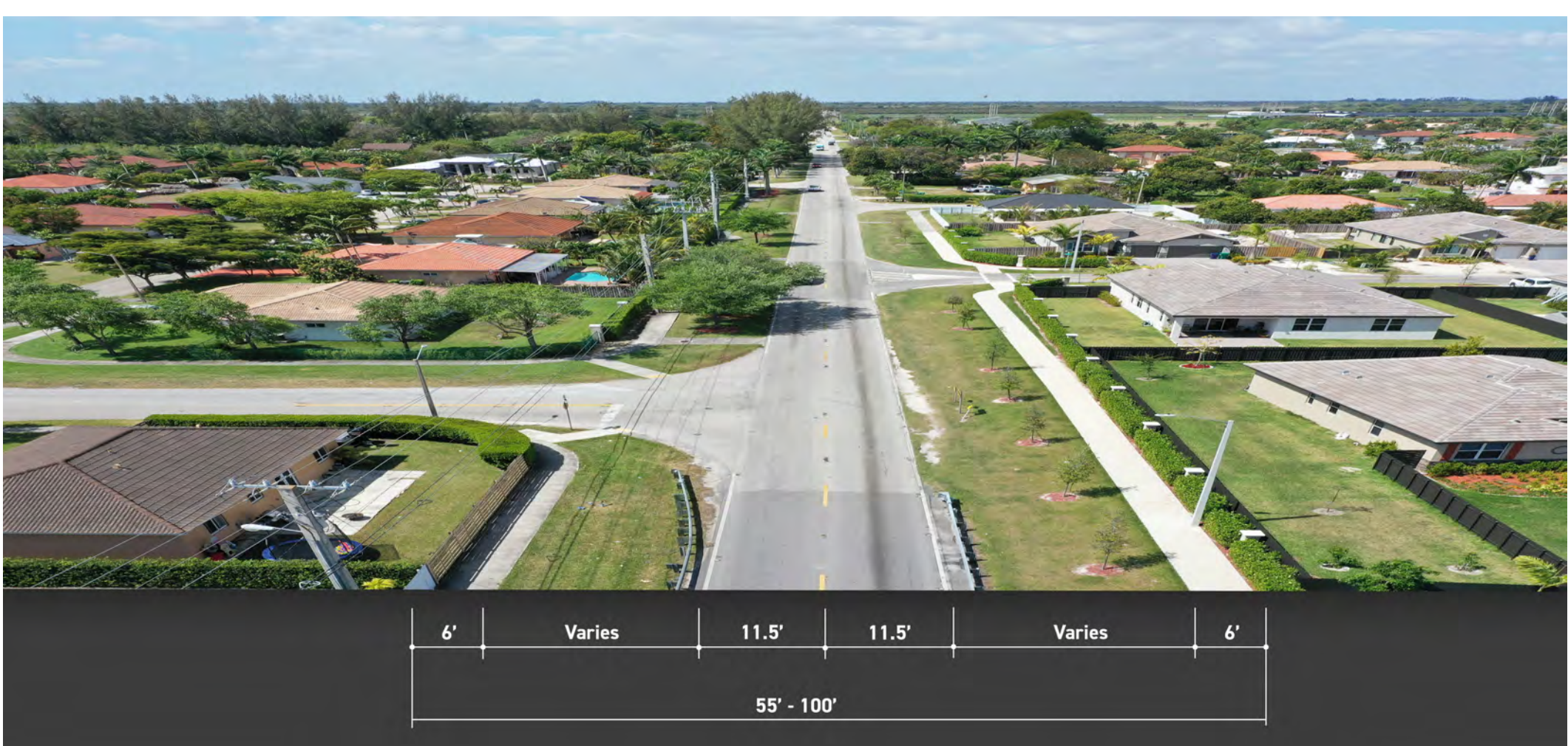
BEGIN PROJECT

Project Information

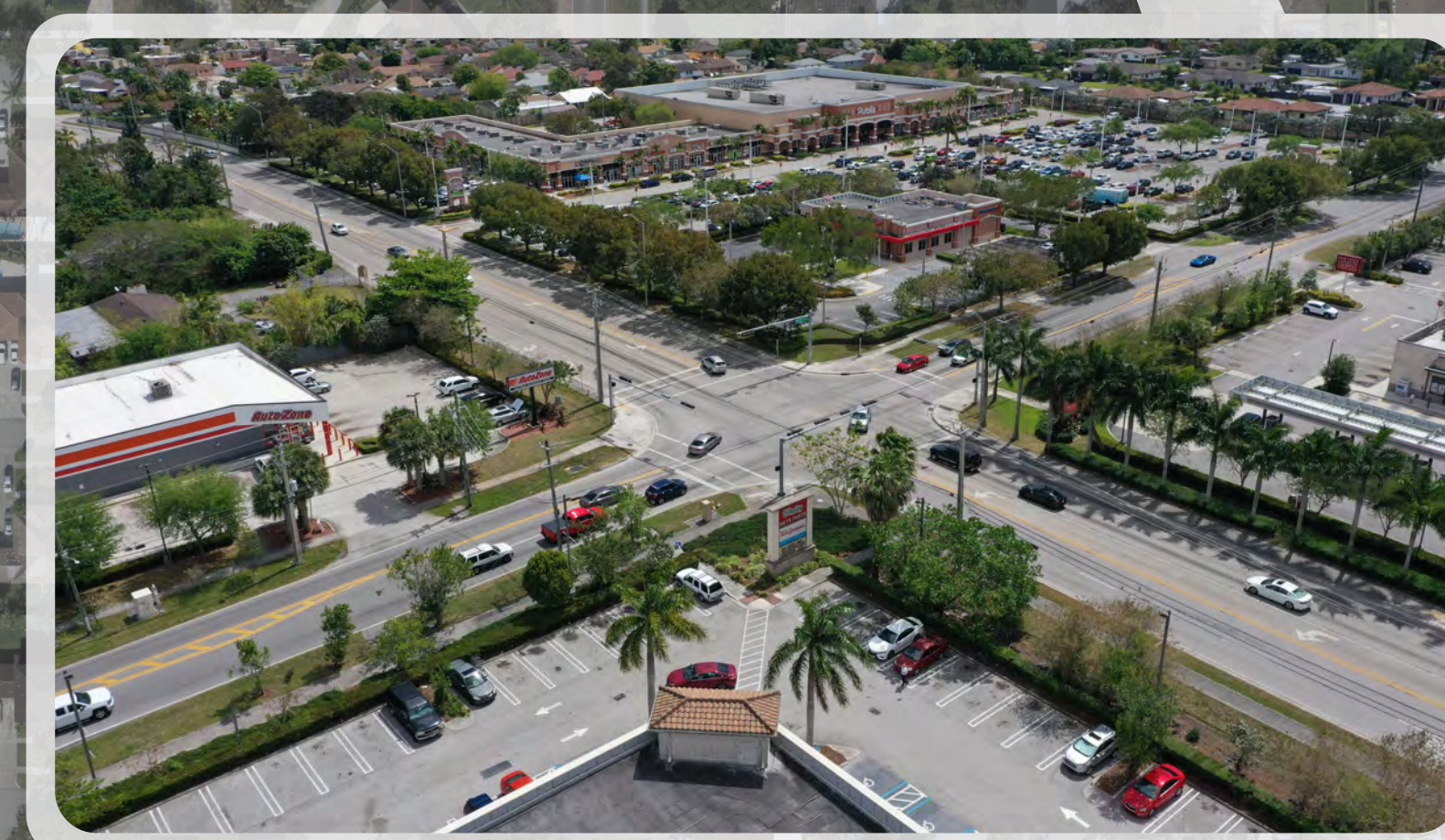
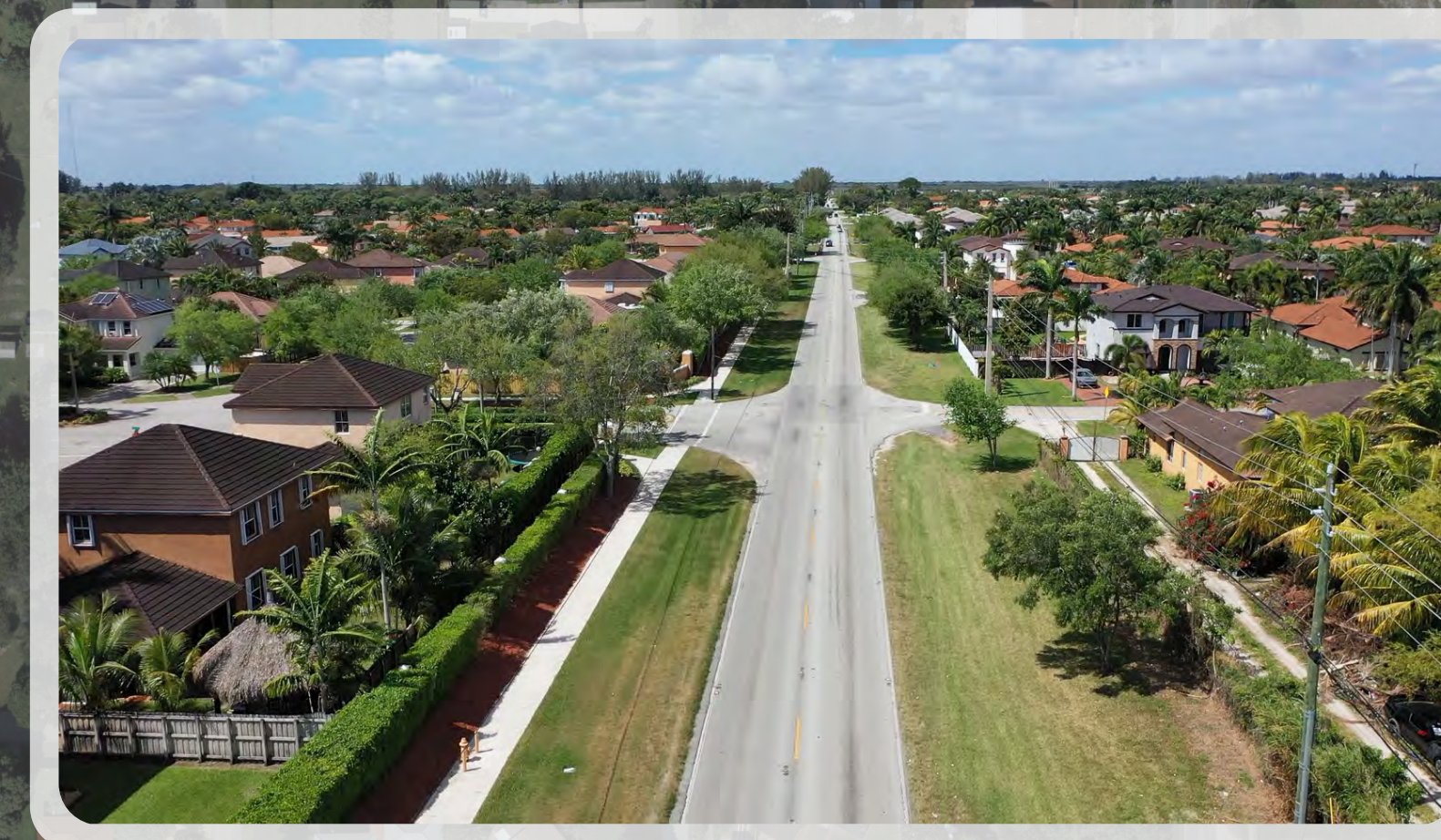
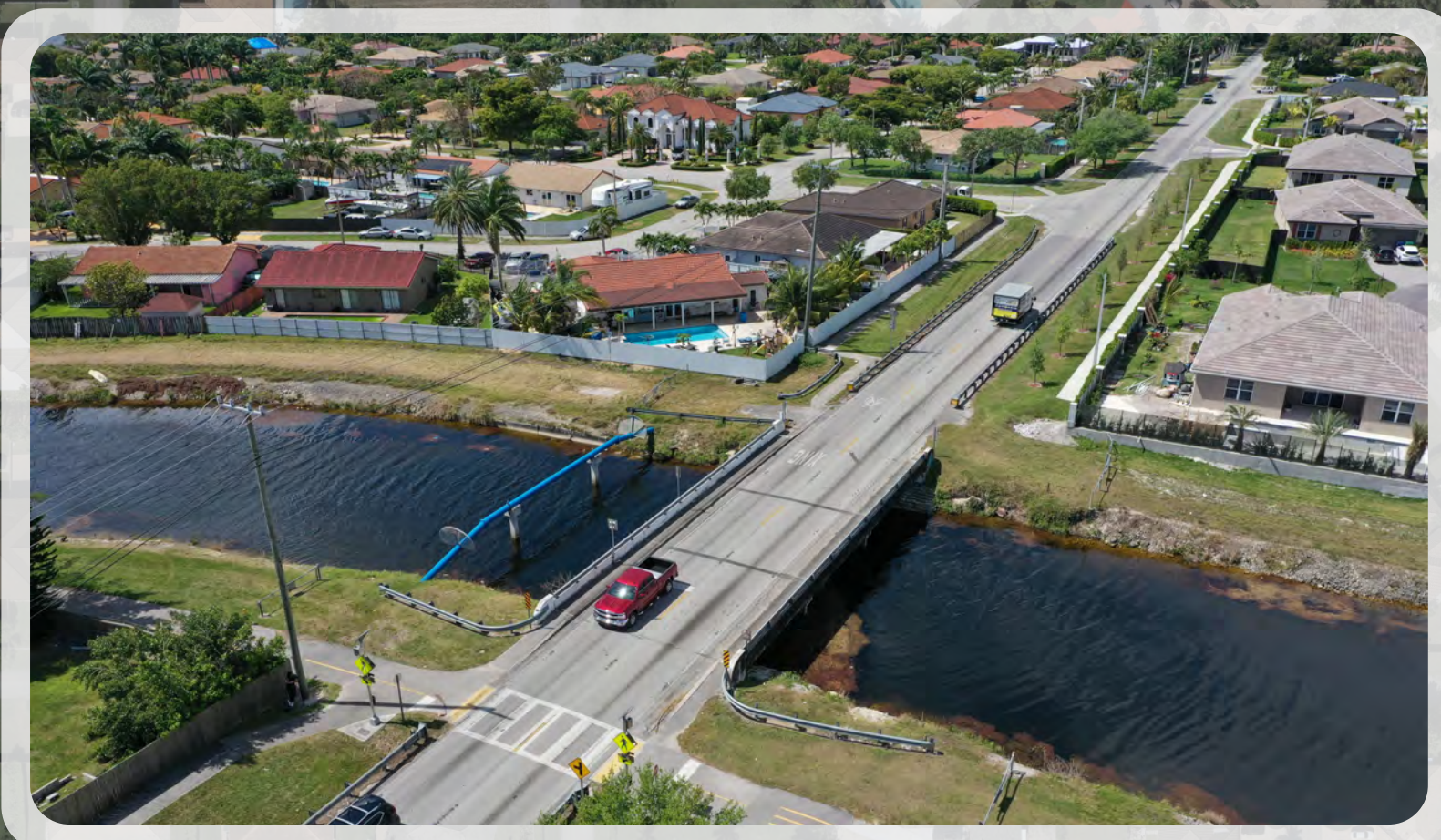


C3R Suburban Residential
Context Classification
Southwest Unincorporated
Miami-Dade County
Land Use: Agricultural & Single-Family
Project Length: 1.7 miles

Existing Typical Section



ROADWAY TYPICAL SECTION



END PROJECT