

Public Alternatives Workshop
June 7, 2022



PD&E Study I-95 / SR 9 from South of SR 860 / Miami Gardens Drive to Broward County Line

FM # 414964-1-22-01
ETDM # 14419



I-95/SR 9 PD&E STUDY



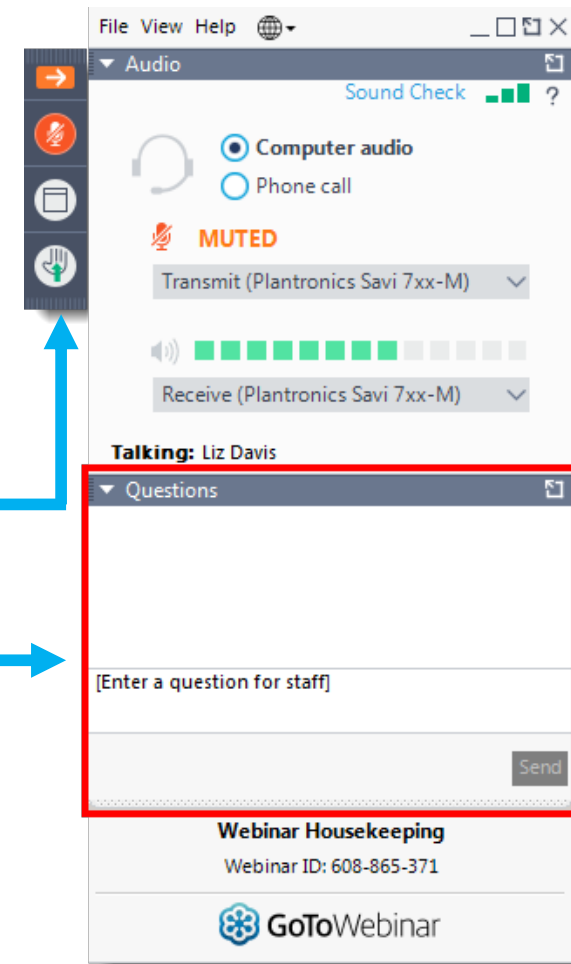
Traducción/Tradiksyon

Si usted necesita traducción durante la reunión por favor comuníquese conmigo. Usted puede presionar el botón de mano levantada, o puede pedir ayuda de traducción a través del chat y un miembro de nuestro equipo lo asistirá.

Si ou bezwen asistans teknik oswa sèvis tradiksyon, Sil vou ple rele nou nan
1 (800) 418-0524.

Rules of Engagement

- Virtual Attendees are Automatically Muted to Start the Meeting
- Providing Comments During Open Discussion Period:
 - In-person attendees we ask that you form a line behind the microphone
 - Call 1-800-418-0524
 - **Raise hand during comment period, you will be unmuted in order of raising hands**
 - Submit Comments via the “Questions” Box
- Get Technical Assistance
 - Call 1-800-418-0524



Title VI Non-Discrimination Compliance

- Public participation at this Public Alternatives Workshop is encouraged and solicited without regard to race, color, national origin, age, sex, religion, disability, or family status.
- Persons wishing to express any concerns about Title VI may do so by contacting either:

Florida Department of Transportation
District Six Office
District Six Title VI Coordinator
Nicholas Danu, P.E.
1000 NW 111 Avenue
Miami, Florida 33172
Nicholas.Danu@dot.state.fl.us
(305) 470-5219

Florida Department of Transportation
Central Office
State Title VI Coordinator
Jacqueline Paramore
605 Suwannee Street
Tallahassee, Florida 32399
Jacqueline.Paramore@dot.state.fl.us
(850) 414-4753

NEPA Assignment Statement

The environmental review, consultation, and other actions required by applicable federal environmental laws for this project are being, or have been, carried out by the FDOT pursuant to 23 U.S.C. § 327 and a Memorandum of Understanding dated December 14, 2016 and executed by the Federal Highway Administration (FHWA) and the FDOT.

Elected Officials

We would like to recognize any federal, state, county, or city officials who may be present.

Please stand or select the raise hand feature on the control panel.

Workshop Presenters/Panelists



I-95/SR 9 PD&E STUDY



Auraliz “Lola” Benitez, P.E.
FDOT Project Manager



Jenn L. King, P.E.
Consultant Project Manager



James Ford, PE
Roadway Lead/Panelist



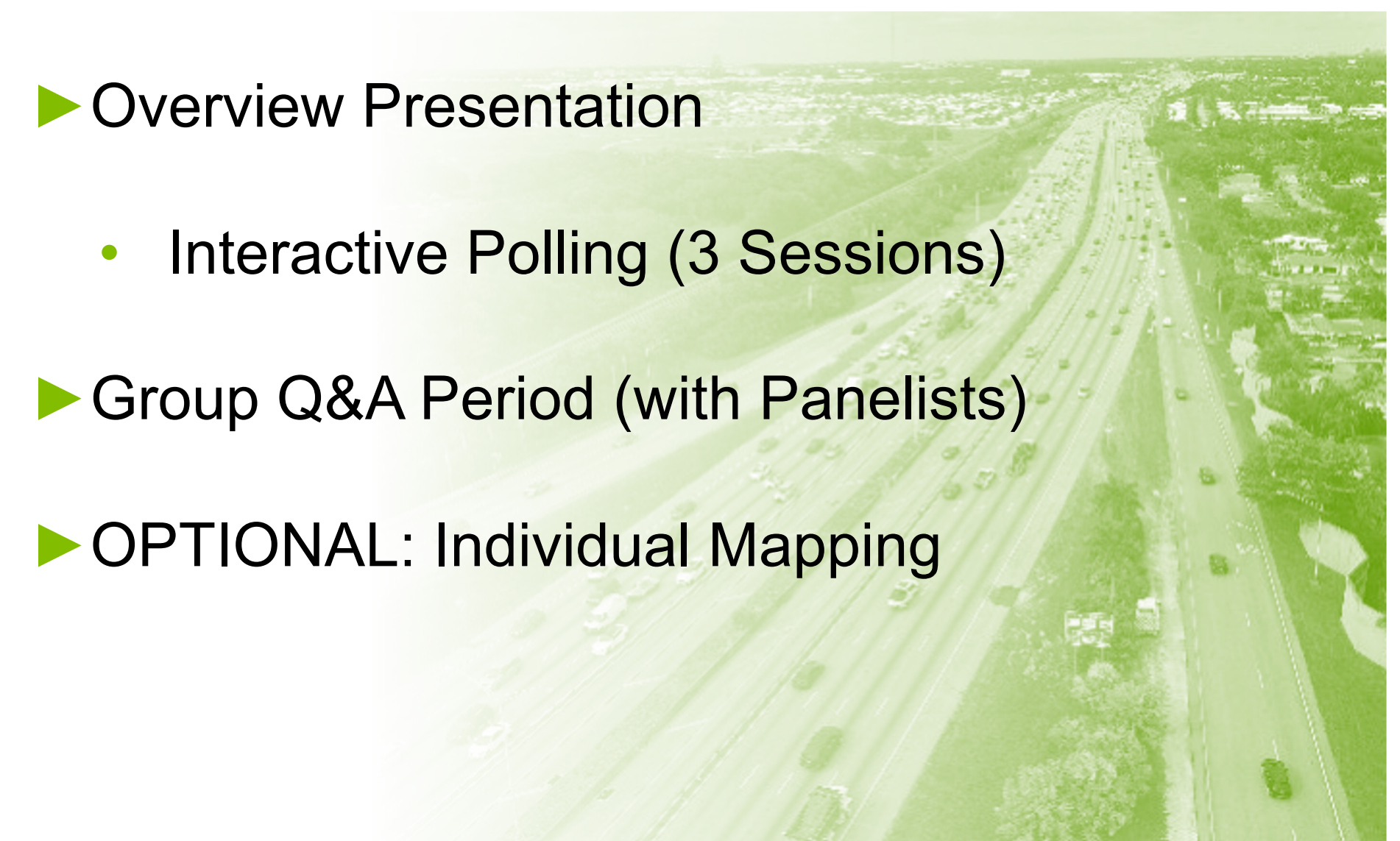
Saul Perez, PE
Structures Lead/Panelist



Keith Stannard
Environmental Lead/Panelist

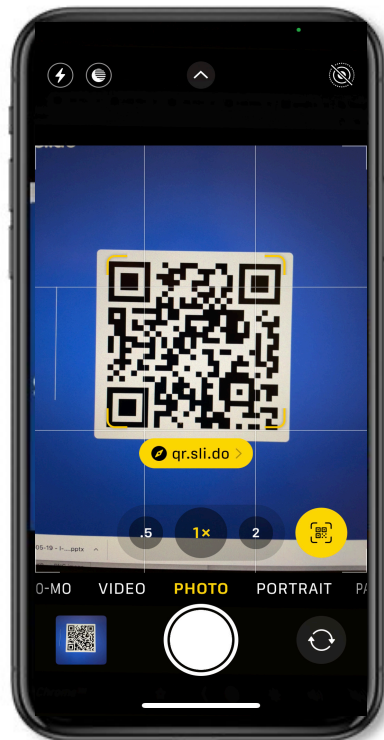


Workshop Agenda

- 
- ▶ Overview Presentation
 - Interactive Polling (3 Sessions)
 - ▶ Group Q&A Period (with Panelists)
 - ▶ OPTIONAL: Individual Mapping

Polling – Slido Poll Participation Instructions - #1 of 3

Smart Phone – Scan QR Code



Computer – Visit www.Slido.com /Enter Code: I95POLL



Note: Today's polling results will help provide preliminary input to the team but are not the only factor used in developing potential alternatives. Engineering, environment, cost, and other factors will also help the study team develop potential alternatives that may or may not advance to the next phase of the project.

Purpose of a Public Workshop

- ▶ Share information about the proposed improvements
- ▶ Provide an opportunity for public input
- ▶ All public comments will become part of the project's public record



Project Overview

► Conduct Project Development and Environment (PD&E) Study

- Approximately 4 miles
- Urban Interstate
- With Express Lanes
- 2 major arterial interchanges
 - ❑ SR 860/Miami Gardens Drive
 - ❑ CR 854/Ives Dairy Road

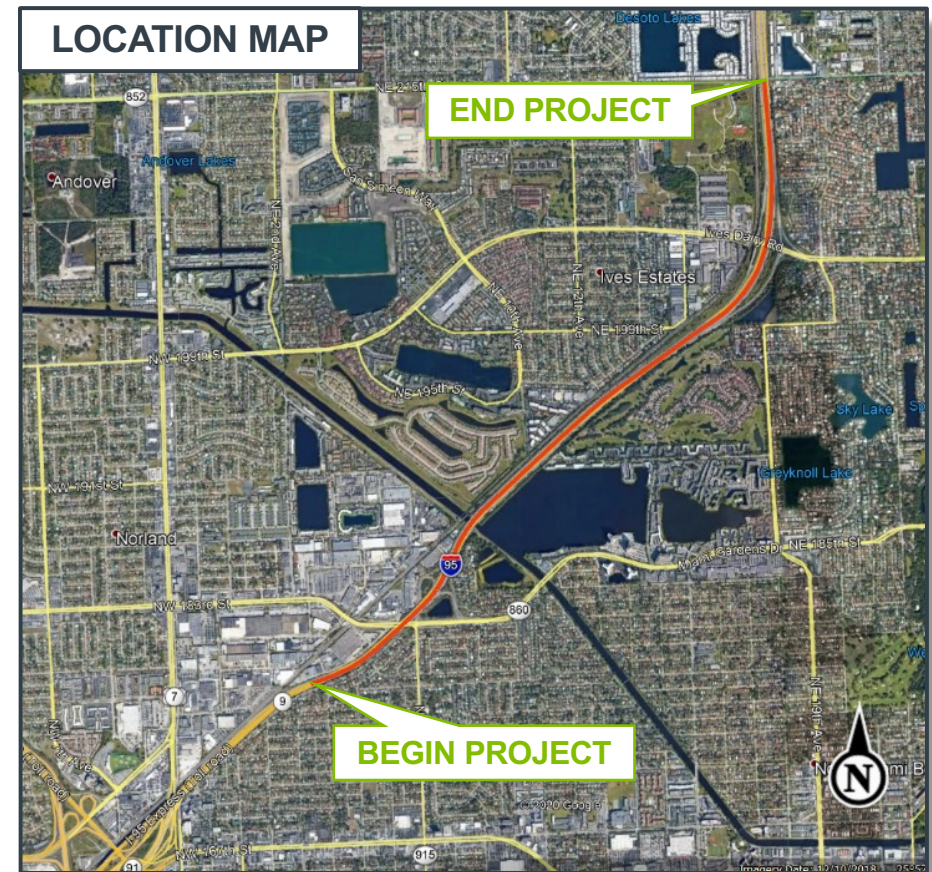
► Class of Action

- Categorical Exclusion Type-2

► Analyze impacts

- Community
- Engineering
- Environmental

► Goal is to obtain Location Design Concept Acceptance (LDCA)



Purpose & Need (P&N)

► Regional

- Coordinate with Golden Glades Interchange (GGI) project to the south
- Coordinate with I-95 PD&E to the north in Broward County
- Consistent Express Lanes (EL) along corridor up to Palm Beach County

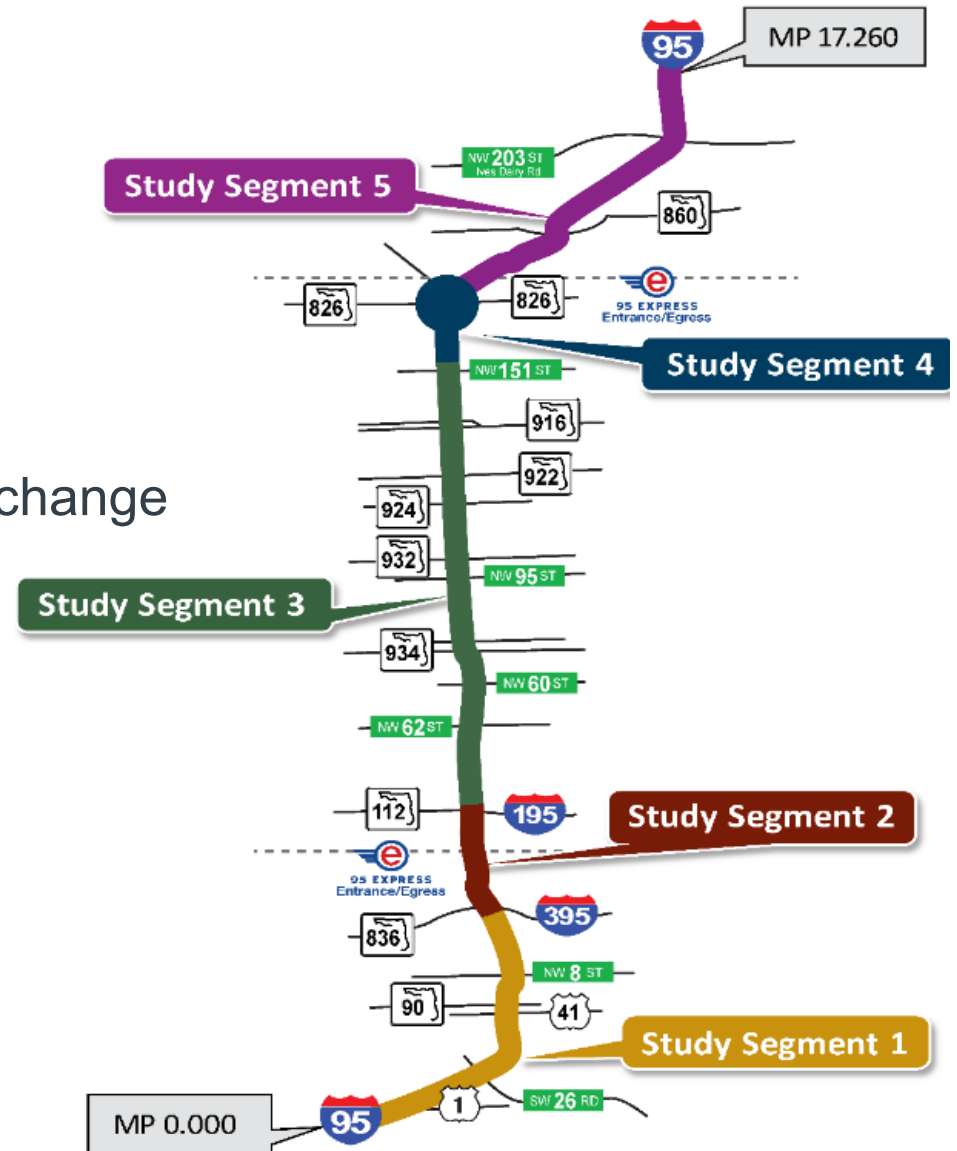
► Goals

- Provide additional capacity / relieve congestion
- Minimize impacts to adjacent projects / throw-away work
- Reduce Right-of-Way (R/W) and construction costs
- Enhance hurricane evacuation route
- Improve emergency response times
- Increase mobility options and transit use



Background - Corridor Planning Study (CPS)

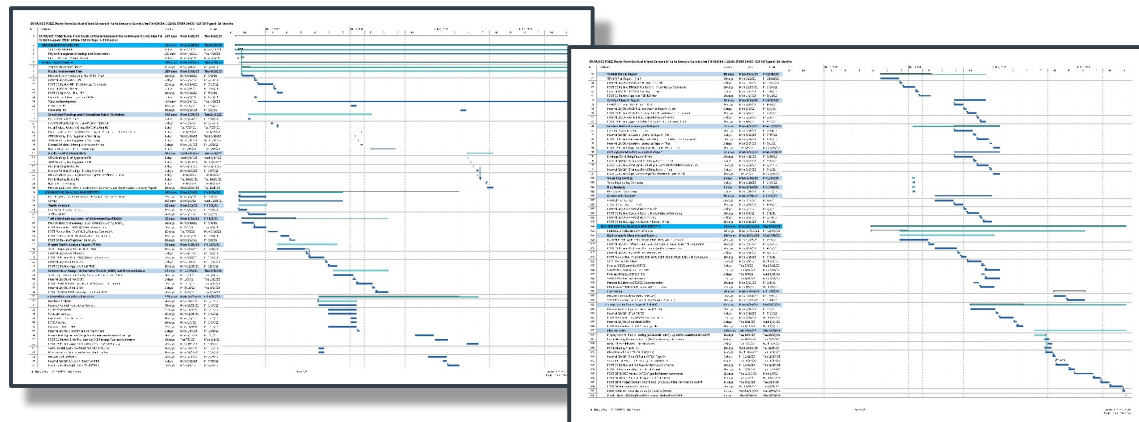
- ▶ I-95 (SR 9 / SR 9A) CPS
 - US1 to Broward County Line
- ▶ 17.260 miles long
- ▶ 5 Study Segments
- ▶ This PD&E is Segment #5 / “North”
 - From north of Golden Glades Interchange (GGI) to Broward County Line



PD&E Project Schedule

- Approximately 24 months for Categorical Exclusion Type-2

Project Milestone	Date
Begin Project	May 2021
Kick-Off Meeting	July 2021
Alternatives Workshop	June 2022
Public Hearing	March 2023
End Project (Location Design Concept Acceptance)	September 2023



Work Program Phases

Project Phase	Fiscal Year
Corridor Planning Study	2019-2020
PD&E Study	2021-2023
Final Design	2024-2026
Right-of-Way	Not Funded
Construction	Not Funded



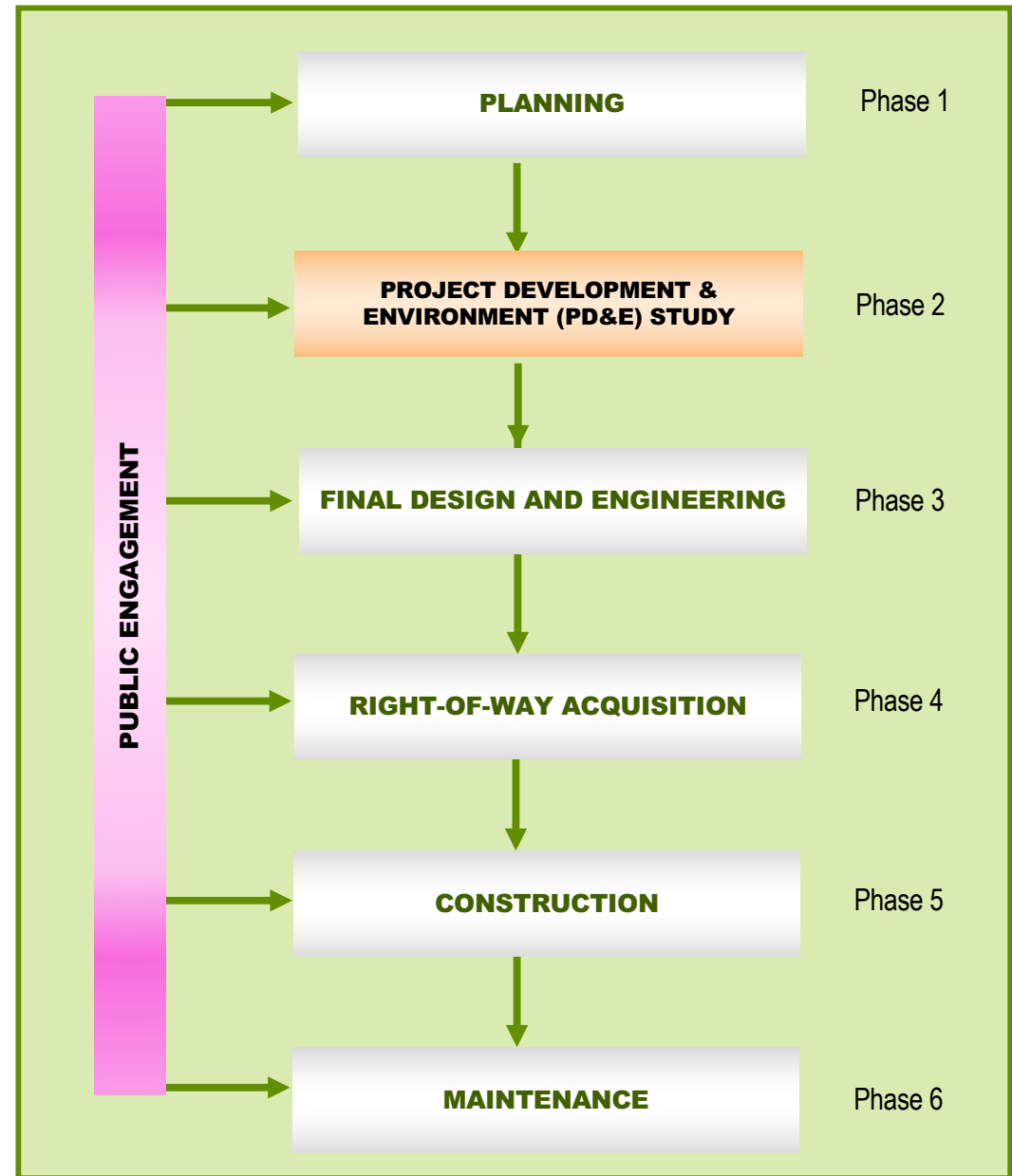
What is a PD&E Study?

- ▶ Identification of Study Area
- ▶ **Engineering** Analysis
- ▶ **Environmental** Analysis and Assessment
 - Wetlands, Endangered Species, Cultural Features, Contamination Assessment, Air/Noise, and Parks/Recreation
- ▶ **Community** Features Assessment
 - Schools, Churches, Businesses, Emergency Facilities, etc.
- ▶ Preliminary Conceptual Engineering Plans
- ▶ Cost Estimates
- ▶ Coordination
 - Federal, State, and Local Agencies and Governmental Entities
- ▶ Public Engagement Process

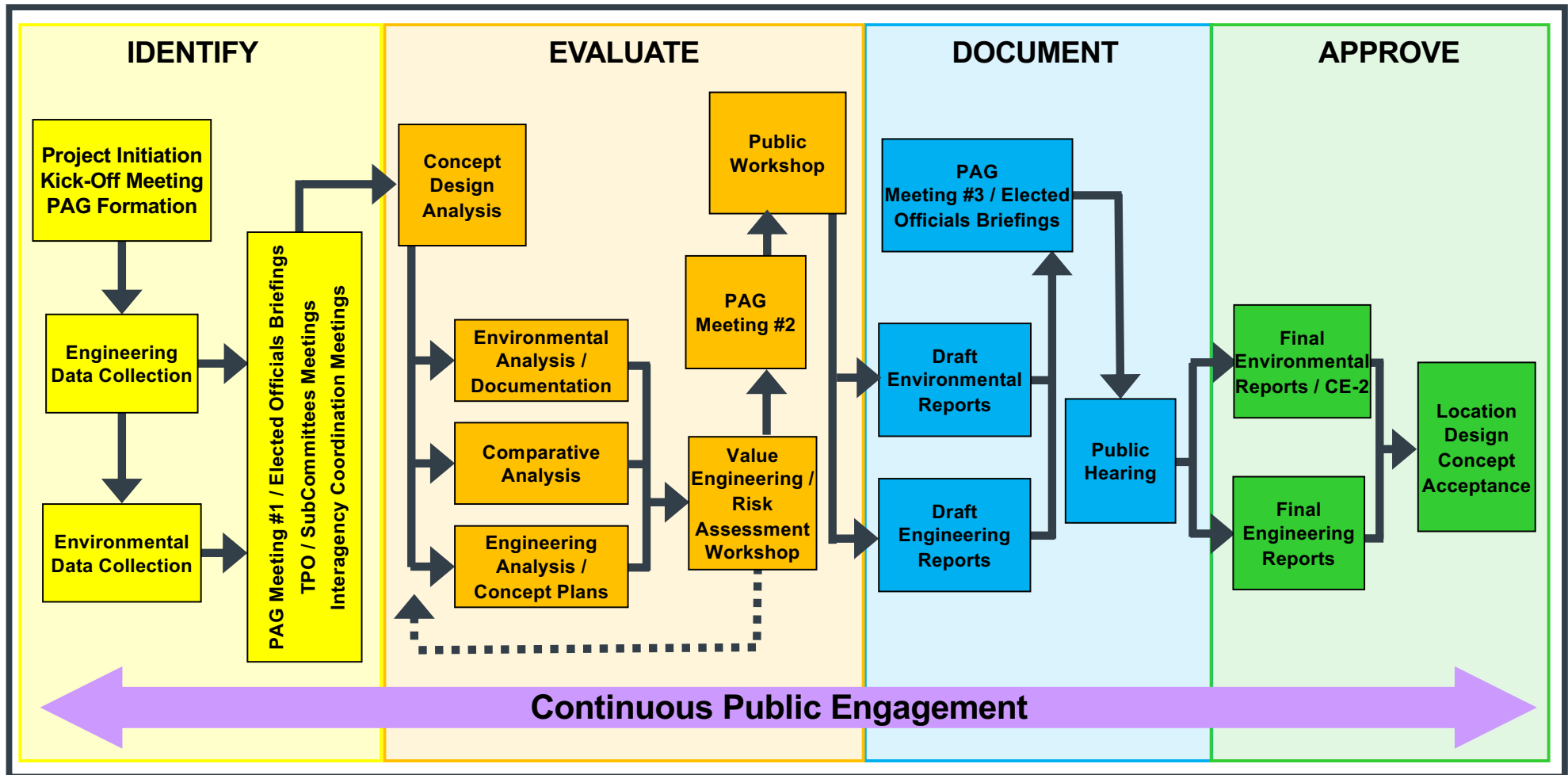


Project Status

► PD&E Study Phase



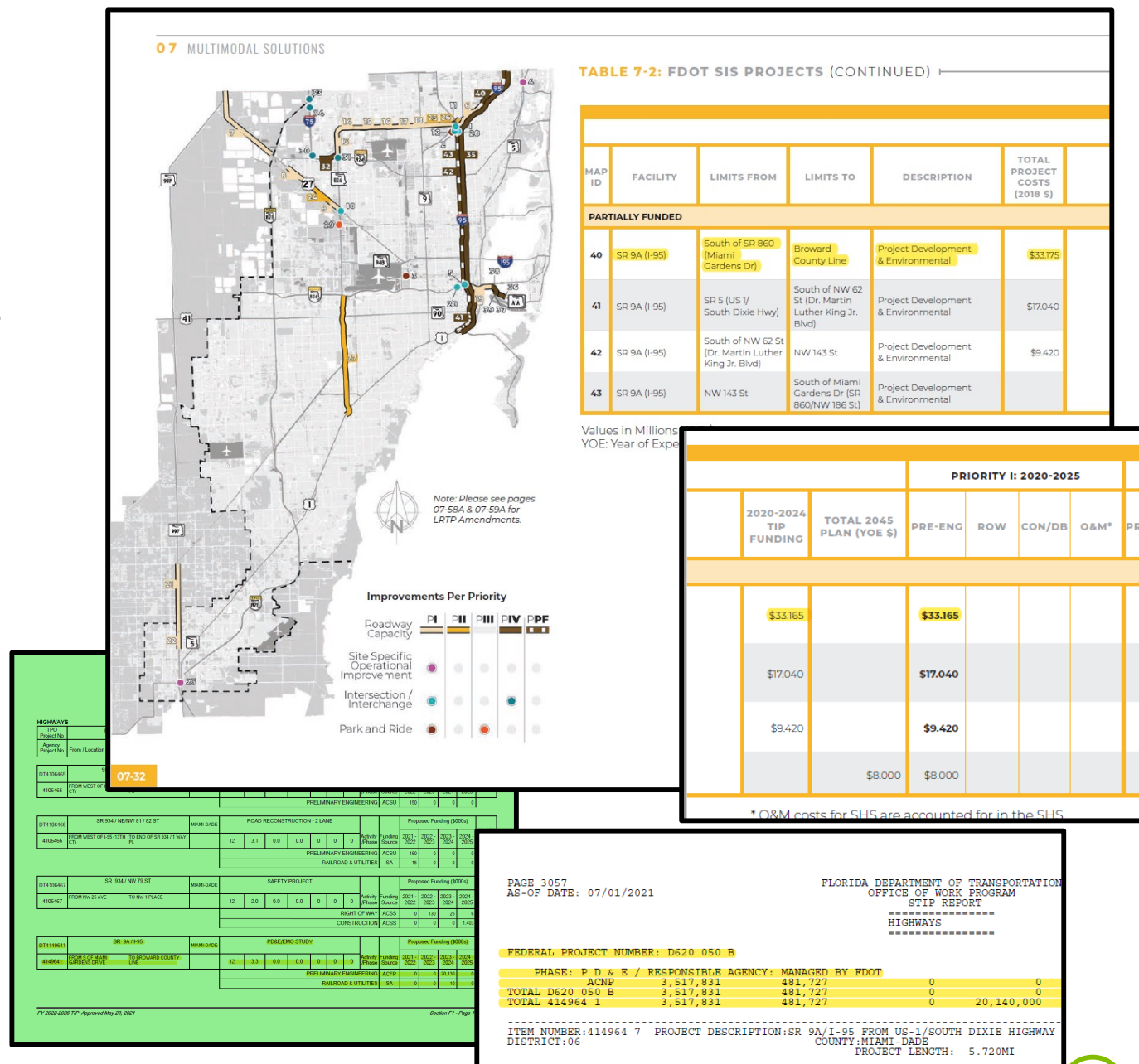
PD&E Study Process



PAG – Project Advisory Group
TPO – Transportation Planning Organization
CE-2 – Categorical Exclusion Type 2

Planning Consistency

- Transportation Improvement Plan (TIP) – TPO Project Number DT4149614
- State Transportation Improvement Plan (STIP)
- 2045 Long Range Transportation Plan (LRTP)



Public Engagement

- ▶ Public Involvement Plan
- ▶ Kick-Off Meetings
- ▶ Elected Officials Briefings
- ▶ Agency Meetings
- ▶ Project Advisory Group
- ▶ Alternatives Workshop
- ▶ Public Hearing



Environmental Considerations

► Key Environmental Topics

• Sociocultural Effects

- ❑ Mobility, Safety, and Emergency Evacuation – **Enhanced**
- ❑ Section 4(f) Recreational Resources
 - ❑ Milton Littman Park (CNMB) – potential encroachment
 - ❑ Snake Creek Trail (MDPROS) – temporary closure
- ❑ Minor ROW impacts anticipated

• Archaeological and Historic Resources

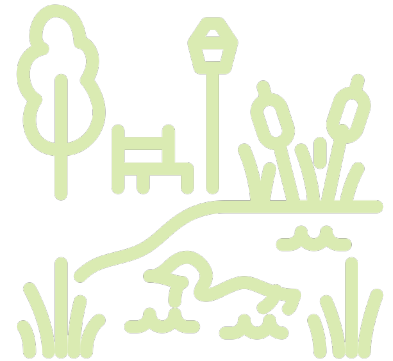
- Velda Farms – National Register eligible
- CSX Railroad – National Register eligible

• Natural Resources

- ❑ Threatened and Endangered Species
 - ❑ Woodstork habitat mitigation
- ❑ Wetlands and Surface Waters
- ❑ Critical Habitat (manatee)

• Physical Effects

- ❑ Air Quality – attainment
- ❑ Contamination – 13 sites
- ❑ Noise



**No substantial
issues**

Social and Economic							Cultural			Natural					Physical					
Land Use Changes	Social	Relocation Potential	Farmlands	Aesthetic Effects	Economic	Mobility	Section 4(f) Potential	Historic and Archaeological Sites	Recreation Areas	Wetlands and Surface Waters	Water Quality and Quantity	Floodplains	Wildlife and Habitat	Coastal and Marine	Noise	Air Quality	Contamination	Infrastructure	Navigation	Special Designations
2	2	2	N/A	2	2	1	3	3	3	3	2	2	2	2	2	2	3	3	3	N/A

Noise Analysis

- ▶ 13 Communities
- ▶ Both sides of I-95
- ▶ 13 Field Monitoring Sites (green stars)
- ▶ 4 Existing Noise Barriers (purple)
- ▶ 3 Existing Fanwall Noise Barriers (turquoise)



Anticipated Agency Coordination / Permits / Approvals



Agency Coordination	Anticipated Environmental Permits / Approvals
US Army Corps of Engineers (USACE)	USACE Section 404 Permit
US Environmental Protection Agency (USEPA)	USACE Section 408 Approval (Works of Congress)
US Fish and Wildlife Service (USFWS)	SFWMD Individual Environmental Resource Permit (ERP)
South Florida Water Management District (SFWMD)	SFWMD ROW Occupancy Permit
Florida Department of Environmental Protection (FDEP)	SFWMD Water Use Permit (Dewatering)
Florida Fish and Wildlife Conservation Commission (FWC)	FDEP National Pollutant Discharge Elimination System (NPDES) Permit
Florida Division of Historical Resources (DHR)/State Historic Preservation Officer (SHPO)	
Miami-Dade County Department of Regulatory and Economic Resources (RER) / Parks, Recreation and Open Spaces (PROS)	

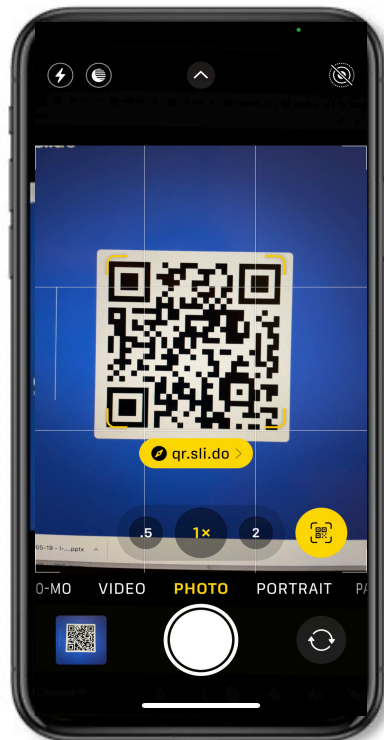
Existing Roadway / Typical Section

- ▶ I-95 / SR 9 on Strategic Intermodal System (SIS) and National Highway System (NHS)
- ▶ Unincorporated Miami-Dade County and City of North Miami Beach
- ▶ SR 860 / Miami Gardens Drive / Exit 14
- ▶ CR 854 / Ives Dairy Road / Exit 16
- ▶ Posted 55 MPH on I-95 and 40 MPH on Miami Gardens Dr/Ives Dairy Rd
- ▶ Existing typical section
 - 6-8 General Use Lanes
 - 2-4 Express Lanes
- ▶ ROW
 - Minimum 200 feet near Golden Glades Interchange (GGI)
 - 1,240 feet Ives Dairy Rd interchange
- ▶ Proposed Mainline from 2019 Corridor Planning Study (CPS)
 - Minimum 11-foot-wide travel lanes, 12-foot preferred
 - 10-foot-wide express lane inside shoulders
 - 4-foot-wide buffer with plastic poles



Polling – Slido Poll Participation Instructions - #2 of 3

Smart Phone – Scan QR Code



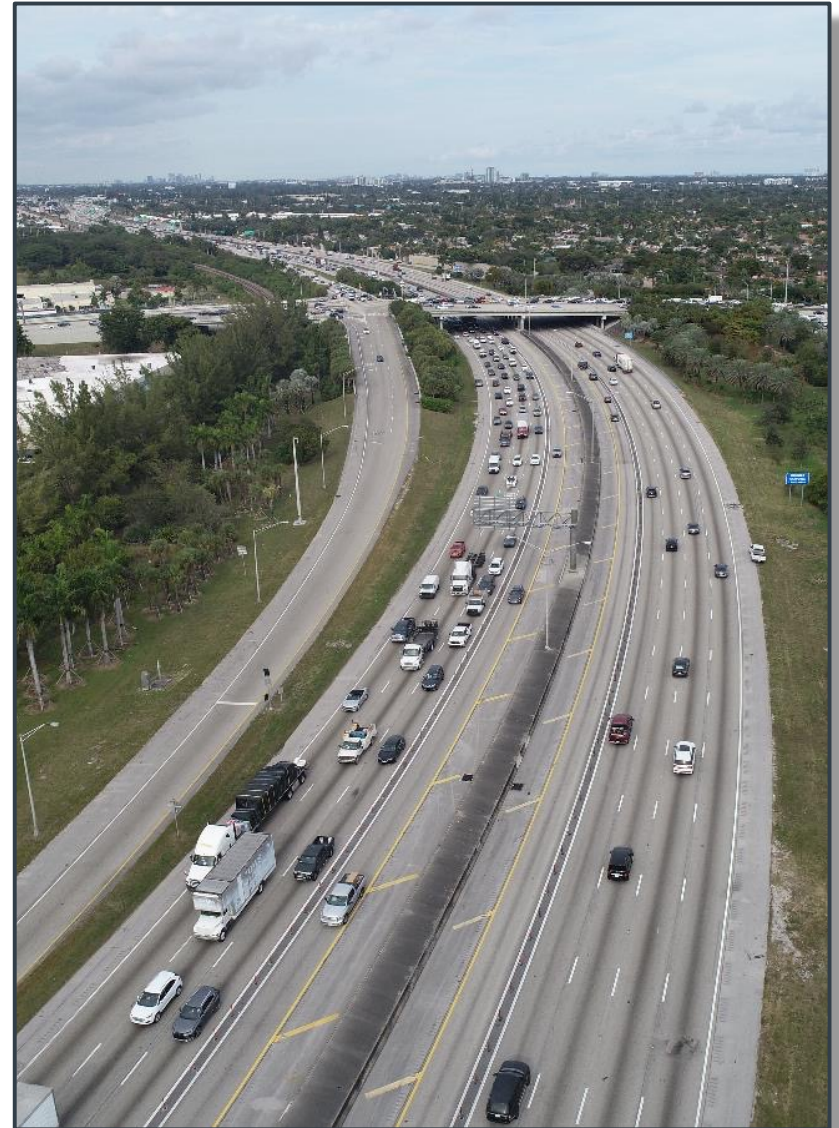
Computer – Visit www.Slido.com /Enter Code: I95POLL



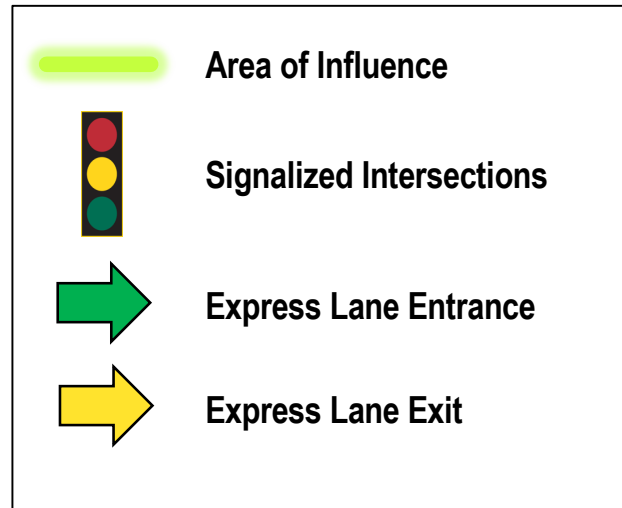
Note: Today's polling results will help provide preliminary input to the team but are not the only factor used in developing potential alternatives. Engineering, environment, cost, and other factors will also help the study team develop potential alternatives that may or may not advance to the next phase of the project.

Key Engineering Topics

- ▶ Mainline I-95 – capacity, constructability, safety
- ▶ Express Lanes – emergency response, access points
- ▶ Miami Gardens Dr and Ives Dairy Rd – congestion, weaving, ramps, multimodal
- ▶ ROW – avoid or minimize
- ▶ Drainage
- ▶ Utility impacts
- ▶ Coordination with ongoing area projects



Preliminary Traffic Study Area

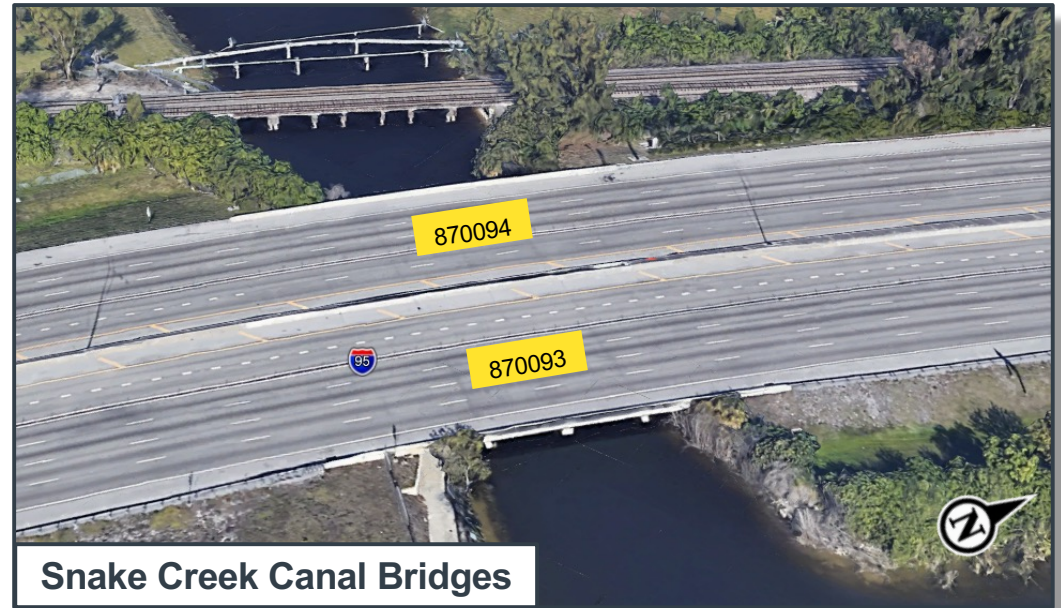


I-95/SR 9 PD&E STUDY



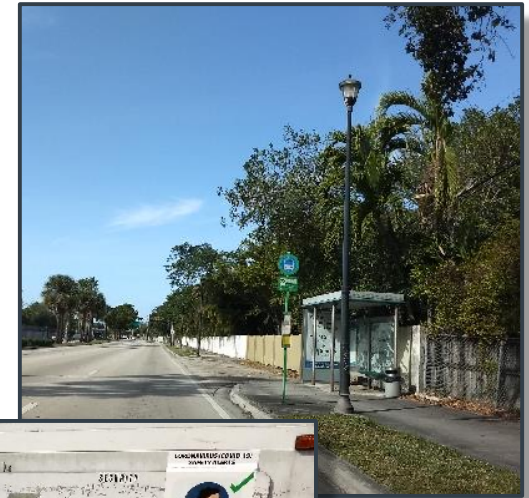
Existing Structures

- ▶ 7 Existing Bridges
 - 2 Bridges over Water
 - 2 Bridges over Railroad
 - 3 Bridges at Interchanges
- ▶ Noise Walls
- ▶ Mechanically Stabilized Earth Walls
- ▶ Coordination
 - Miami-Dade County Parks
 - Railroad



Multimodal / Railroad

- ▶ Coordinate with Miami-Dade Transit
 - Local Bus Routes 95, 99, 183
 - MDT Garage located off of Miami Gardens Dr
- ▶ Coordinate with Broward County Transit
 - 95-X Buses (Express Bus Service)
- ▶ Coordinate with Railroad
 - Tri-Rail
 - AmTrak
 - CSX
- ▶ Investigated a new Park'N'Ride Lot



Alternatives

► No-Build

► 2 Build Alternatives (Design Year 2050)

- Alternative #1

- ❑ Based off of FDOT D6 I-95 Corridor Planning Study
- ❑ No braided ramps for Express Lanes
- ❑ At-grade on-ramp at Miami Gardens Drive
- ❑ Diverging Diamond Interchange (DDI) proposed at Ives Dairy Rd

- Alternative #2

- ❑ Based off of FDOT D4 I-95 Planning Study
- ❑ With braided ramps for Express Lanes
- ❑ Grade-separated on-ramp at Miami Gardens Drive
- ❑ Single Point Urban Interchange (SPUI) proposed at Ives Dairy Rd

Alternative #1

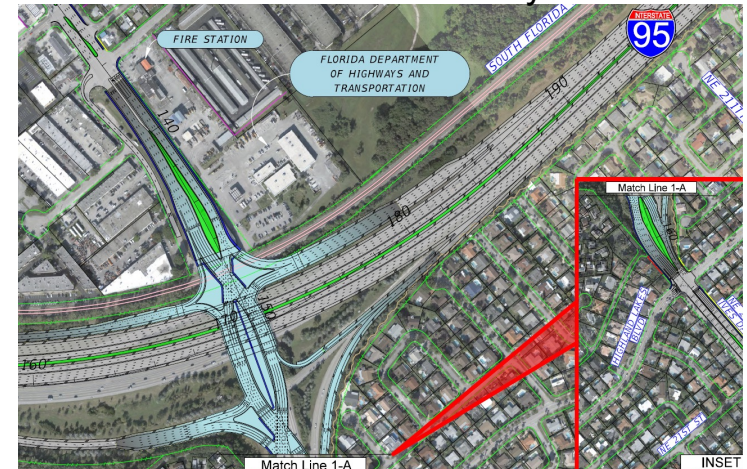


Alternative #1 – Miami Gardens Drive



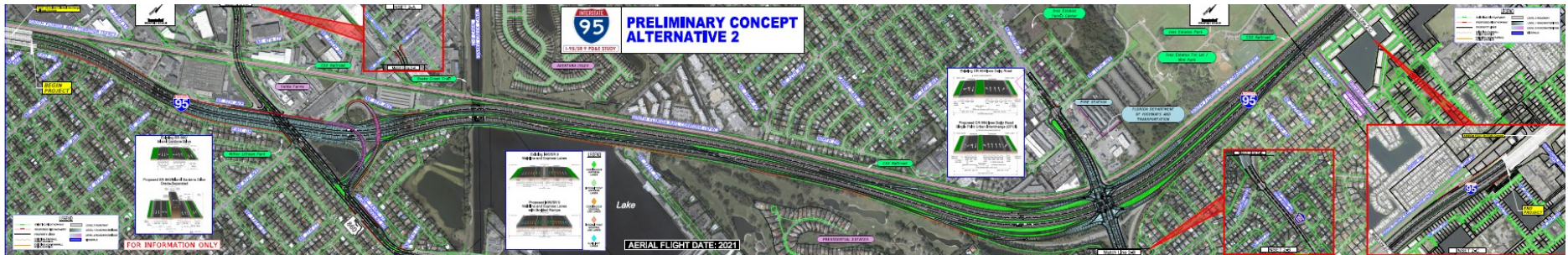
At-Grade On-Ramp

Alternative #1 – Ives Dairy Road

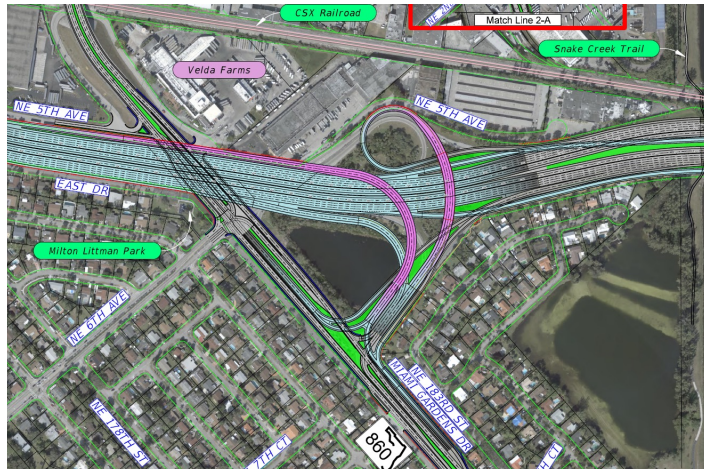


Diverging Diamond Interchange (DDI)

Alternative #2

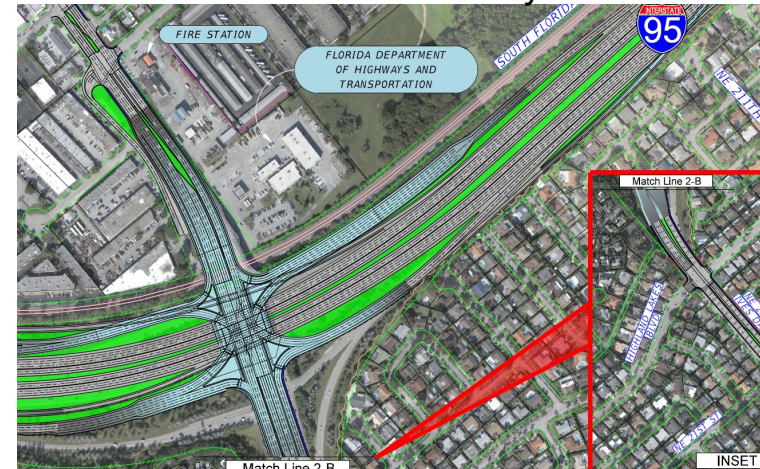


Alternative #2 – Miami Gardens Drive



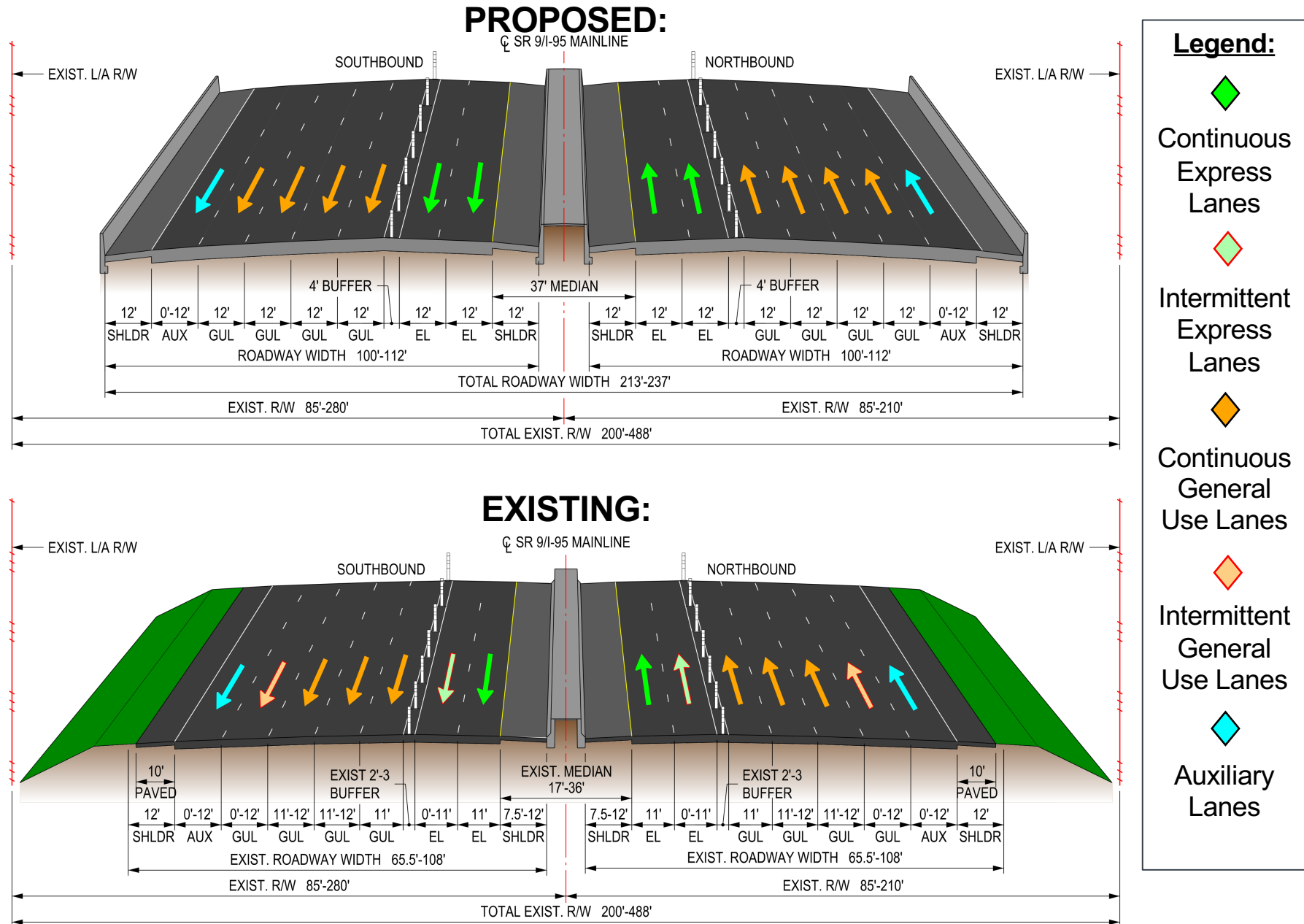
Grade-Separated On-Ramp

Alternative #2 – Ives Dairy Road

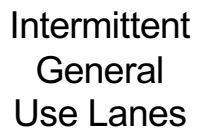
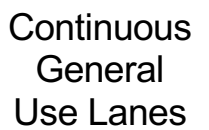
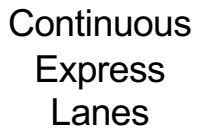


Single Point Urban Interchange (SPUI)

Alternative #1 – I-95 Mainline and Express Lanes

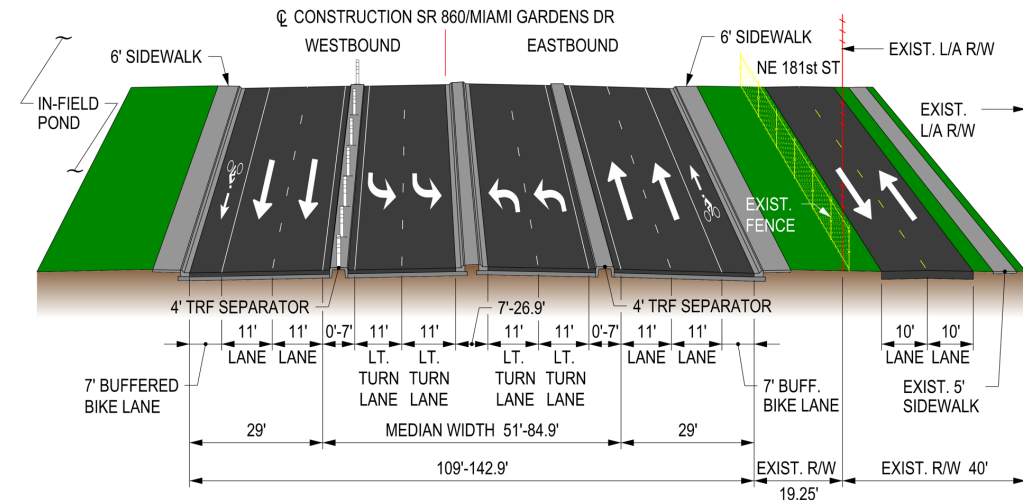


C SD 0/1 OF MAINLINE

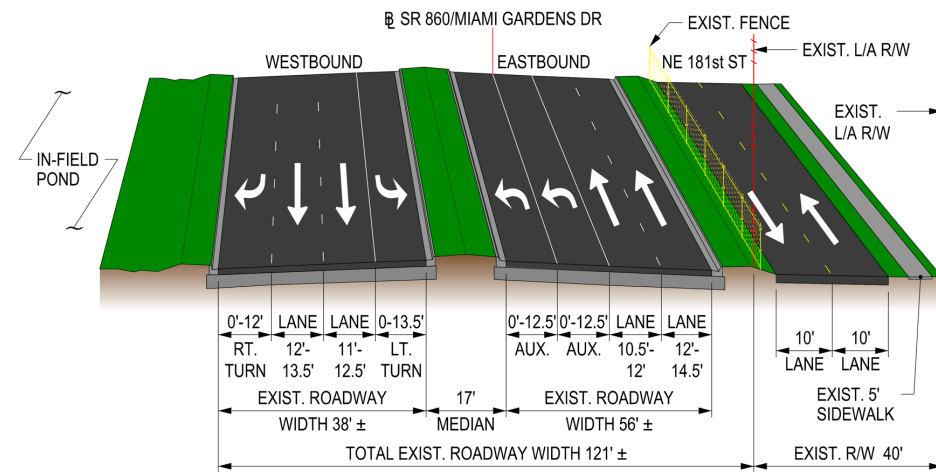


SR 860 / Miami Gardens Dr

PROPOSED: Alternative #1 At-Grade



EXISTING:

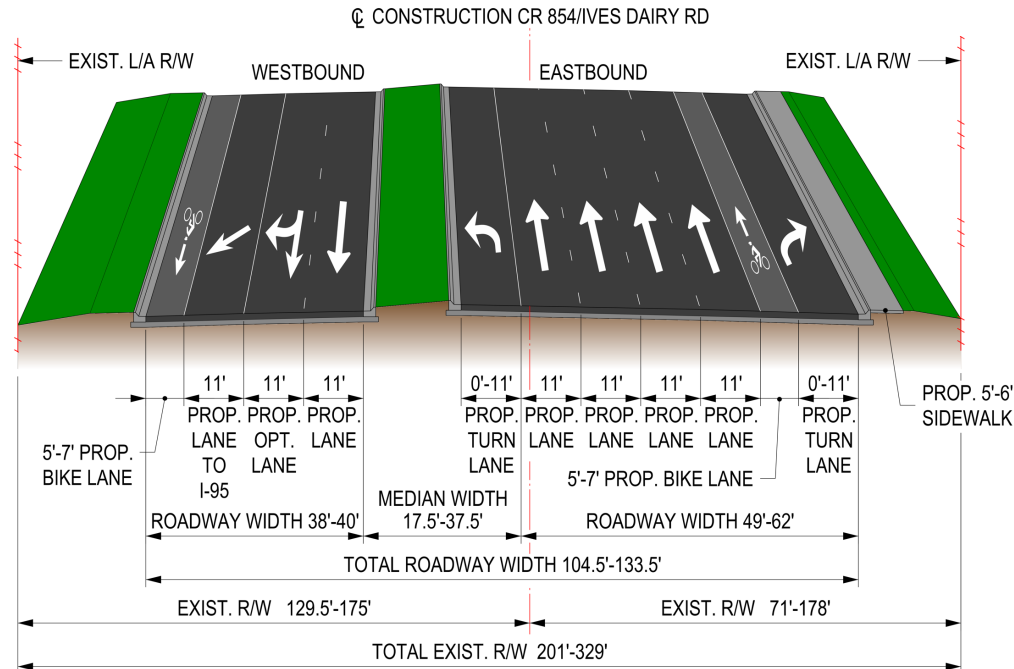


PROPOSED:
Alternative #2
Grade-Separated

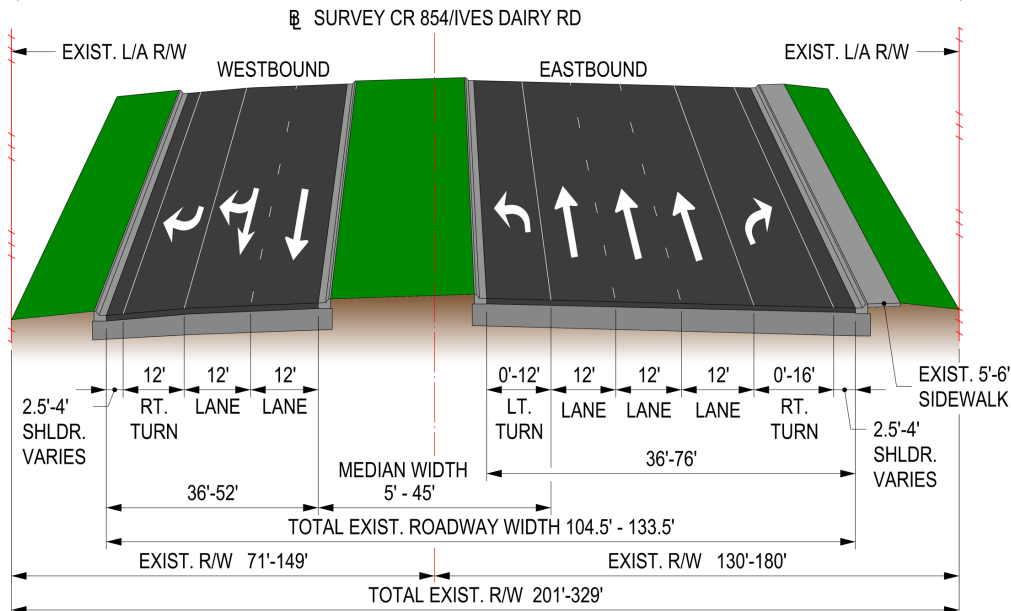


CR 854 / Ives Dairy Road

PROPOSED: Alternative #1 DDI

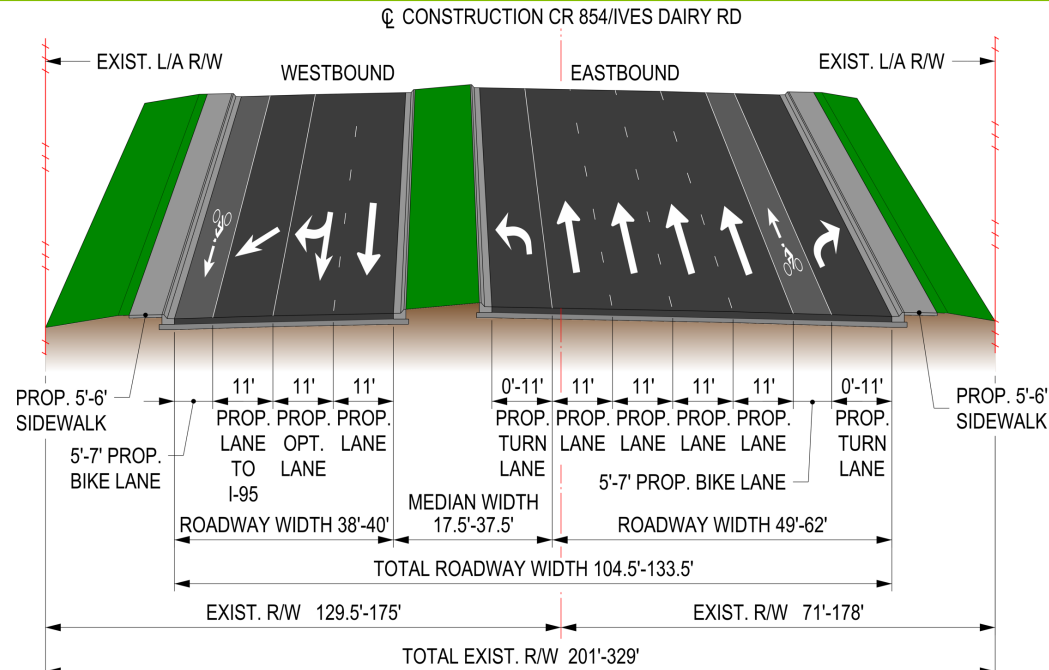


EXISTING:

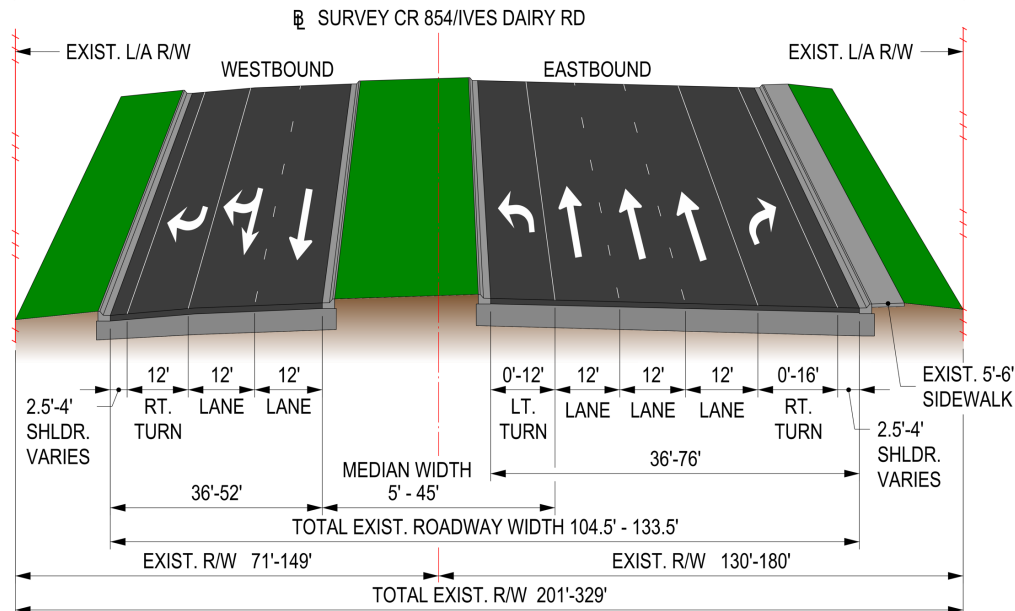


CR 854 / Ives Dairy Road

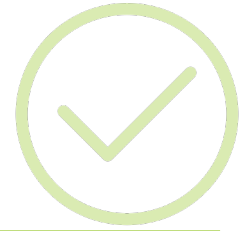
PROPOSED: Alternative #2 SPUI



EXISTING:

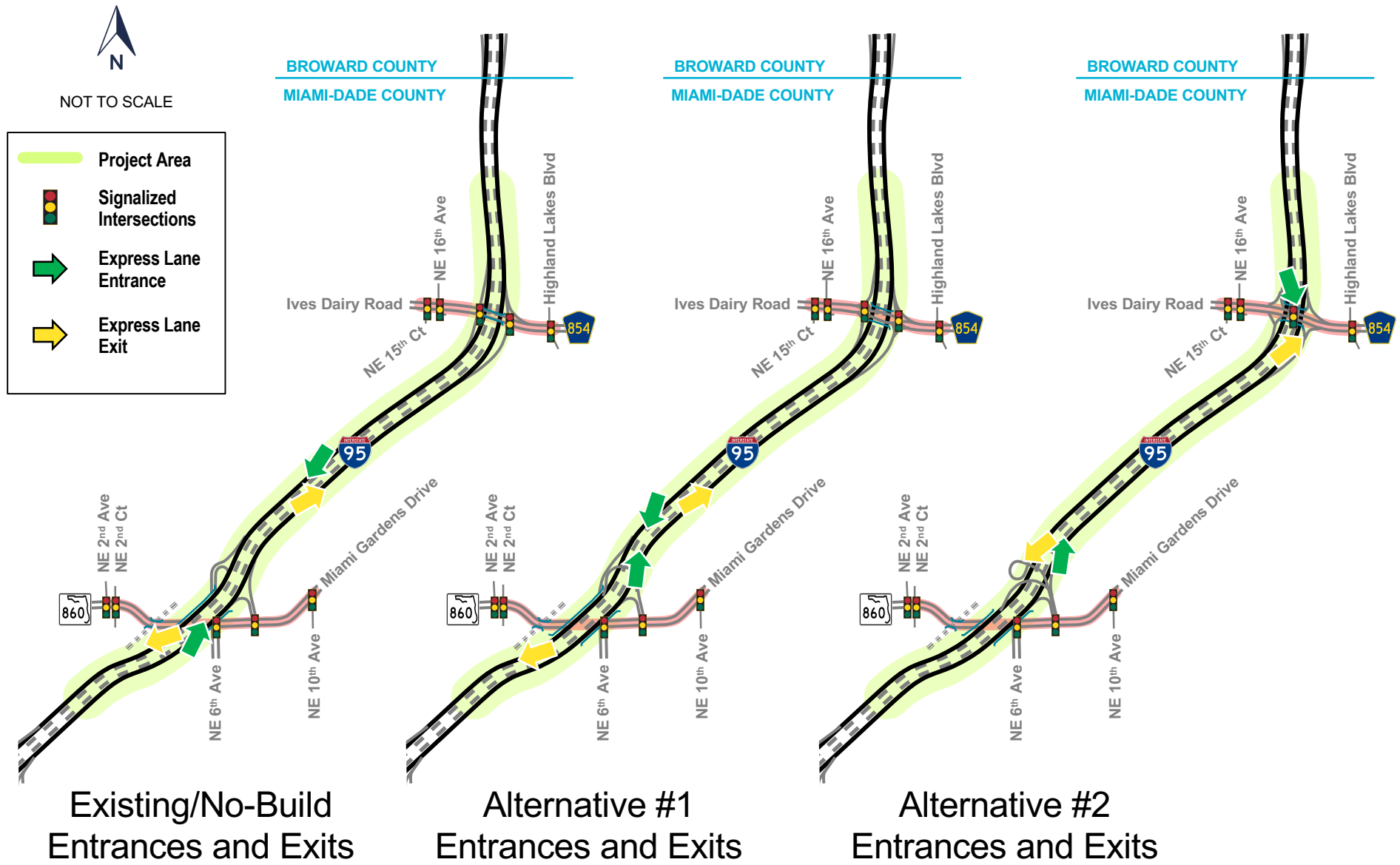


I-95 Corridor Studies – Traffic Study Design Years



Project Description	Design Year
FDOT D6, 2013 SIMR Evaluation, SR 826/Palmetto Expressway PD&E Study (GGI Ultimate)	2040
FDOT D6, 2016 SIMR Reevaluation, SR 826/Palmetto Expressway PD&E Study (GGI Ultimate)	2040
FDOT D6, 2019 SIMR 2 nd Reevaluation, SR 826/Palmetto Expressway PD&E Study (GGI Ultimate)	2040
FDOT D6, 2019 I-95 Corridor Planning Study US 1 to Miami-Dade/Broward County Line	2045
FDOT D4, 2021 SIMR Evaluation, I-95 PD&E Study Hallandale Beach Boulevard to Hollywood Boulevard	2045
FDOT D4, 2022 Traffic Data Collection and Projections, I-95 PD&E Study Miami-Dade/Broward County Line to Griffin Road	2045
FDOT D6, 2022 SIMR Reevaluation, SR 826/Palmetto Expressway PD&E Study (GGI Interim)	2048
FDOT D6, 2022 SIMR Evaluation, I-95 PD&E Study Miami Gardens Drive to Miami-Dade/Broward County Line	2050

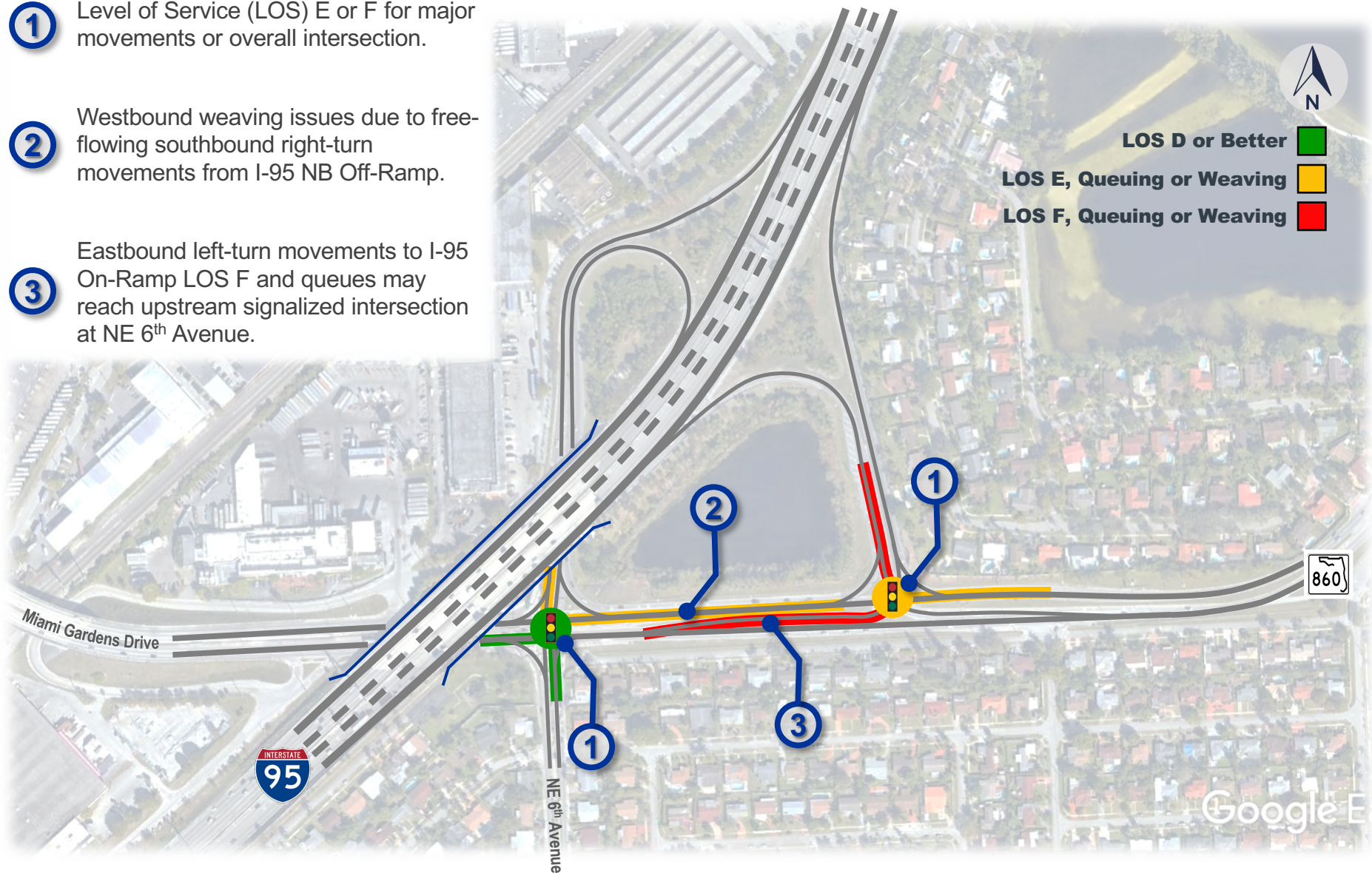
Express Lanes Entrances / Exits



Miami Gardens Drive Interchange

Existing Year 2021

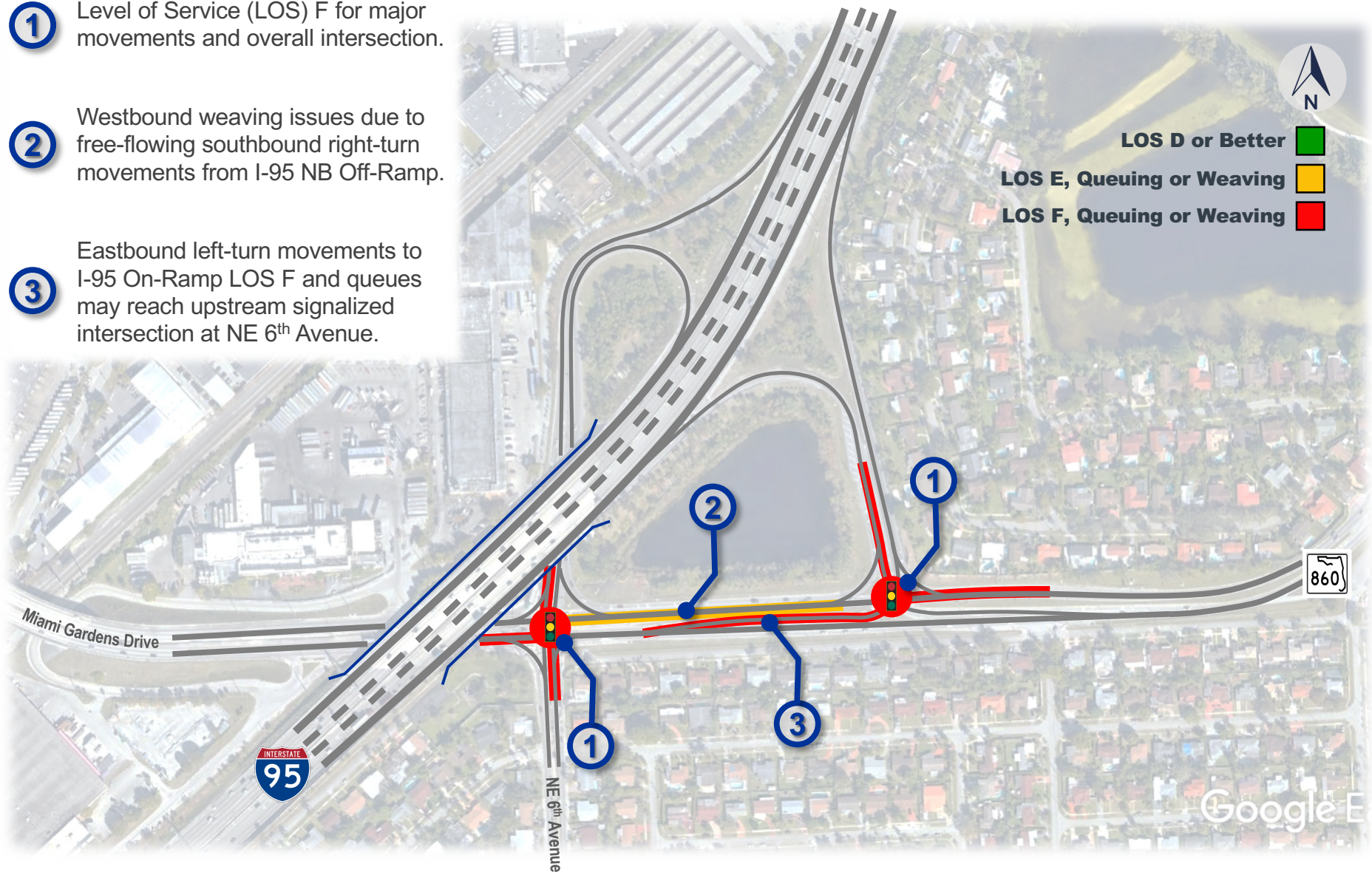
- ① Level of Service (LOS) E or F for major movements or overall intersection.
- ② Westbound weaving issues due to free-flowing southbound right-turn movements from I-95 NB Off-Ramp.
- ③ Eastbound left-turn movements to I-95 On-Ramp LOS F and queues may reach upstream signalized intersection at NE 6th Avenue.



Miami Gardens Drive Interchange

No-Build 2050

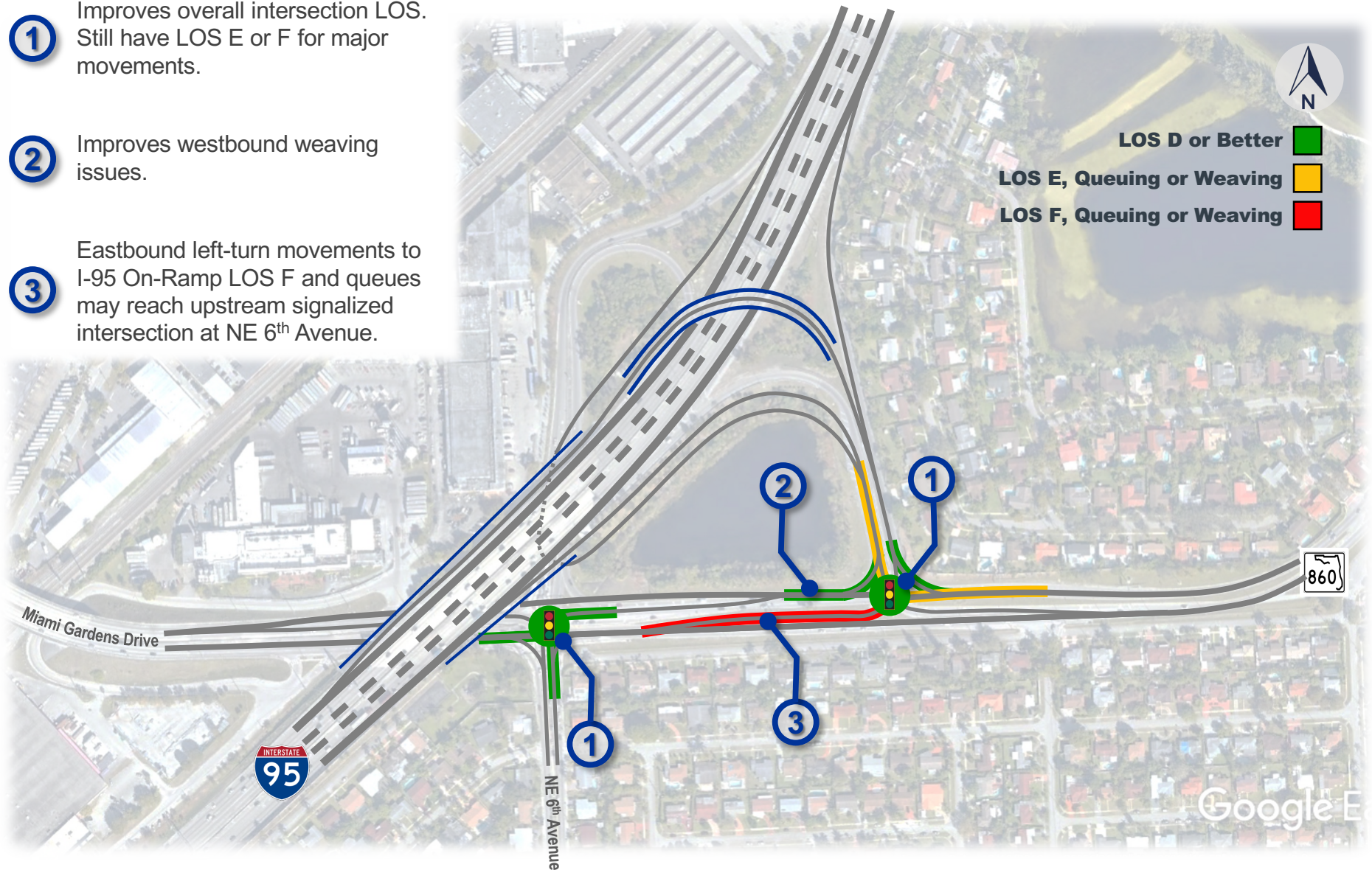
- ① Level of Service (LOS) F for major movements and overall intersection.
- ② Westbound weaving issues due to free-flowing southbound right-turn movements from I-95 NB Off-Ramp.
- ③ Eastbound left-turn movements to I-95 On-Ramp LOS F and queues may reach upstream signalized intersection at NE 6th Avenue.



Miami Gardens Drive Interchange

Alternative #1 2050

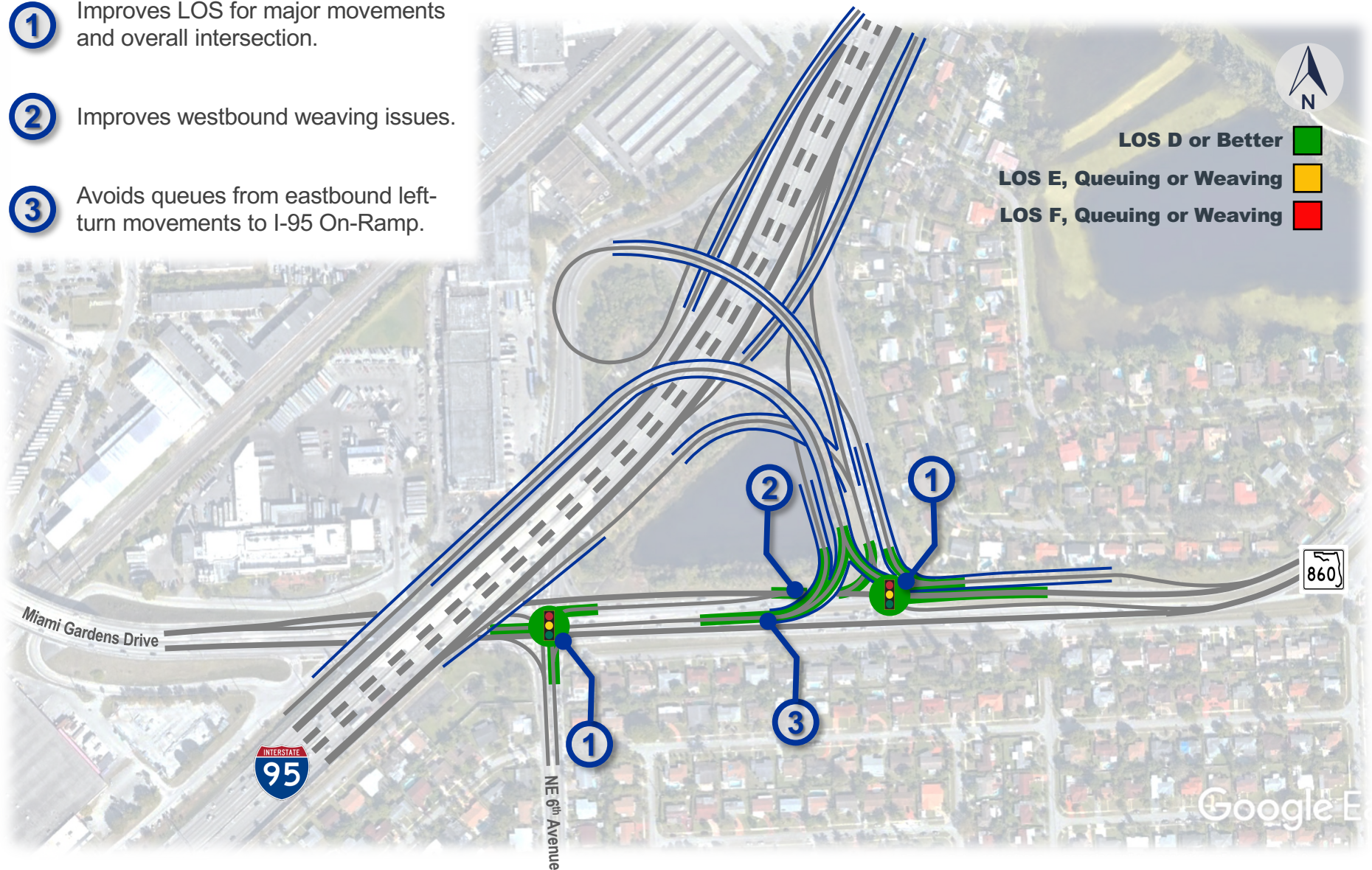
- ① Improves overall intersection LOS. Still have LOS E or F for major movements.
- ② Improves westbound weaving issues.
- ③ Eastbound left-turn movements to I-95 On-Ramp LOS F and queues may reach upstream signalized intersection at NE 6th Avenue.



Miami Gardens Drive Interchange

Alternative #2 2050

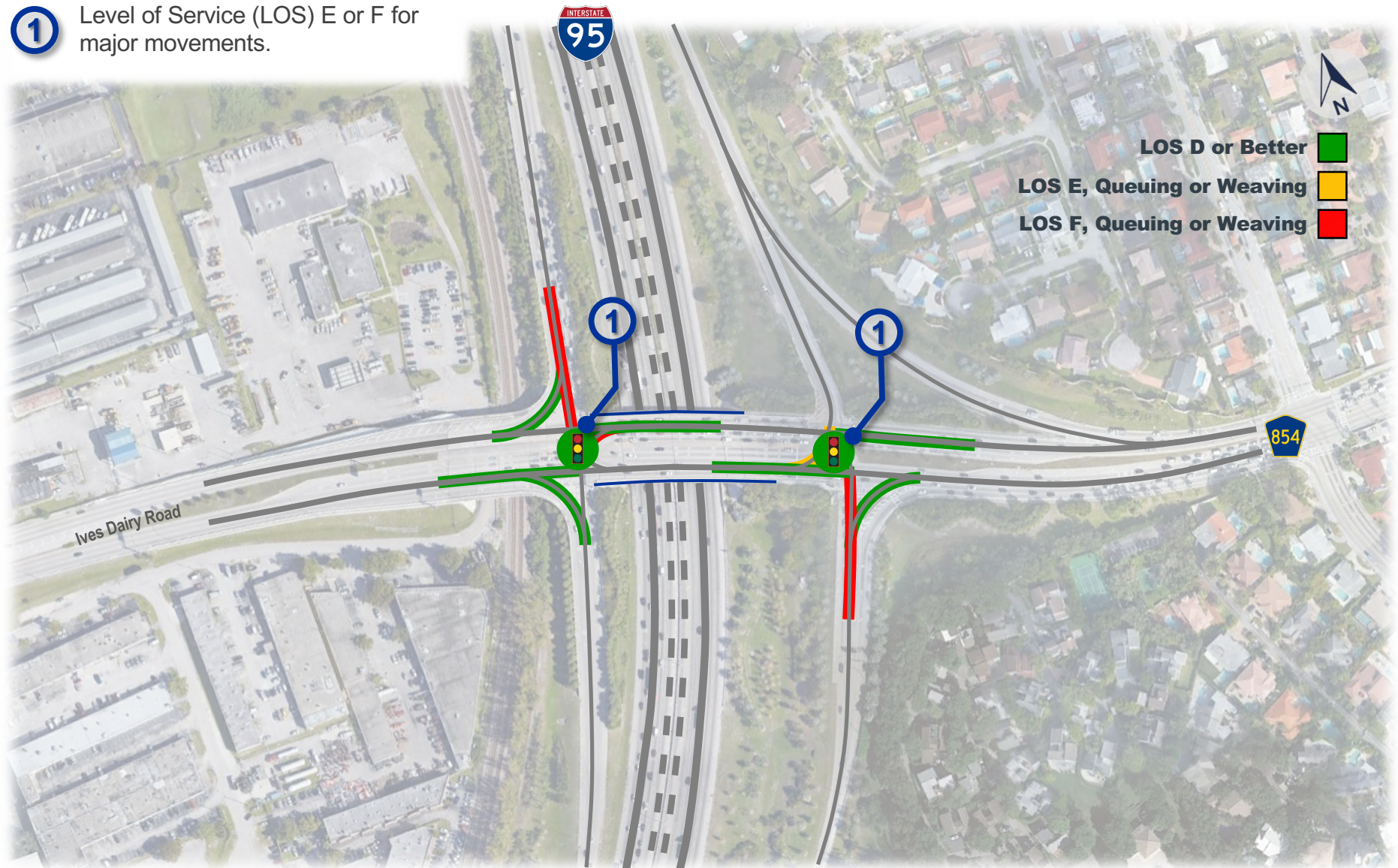
- ① Improves LOS for major movements and overall intersection.
- ② Improves westbound weaving issues.
- ③ Avoids queues from eastbound left-turn movements to I-95 On-Ramp.



Ives Dairy Road Interchange

Existing Year 2021

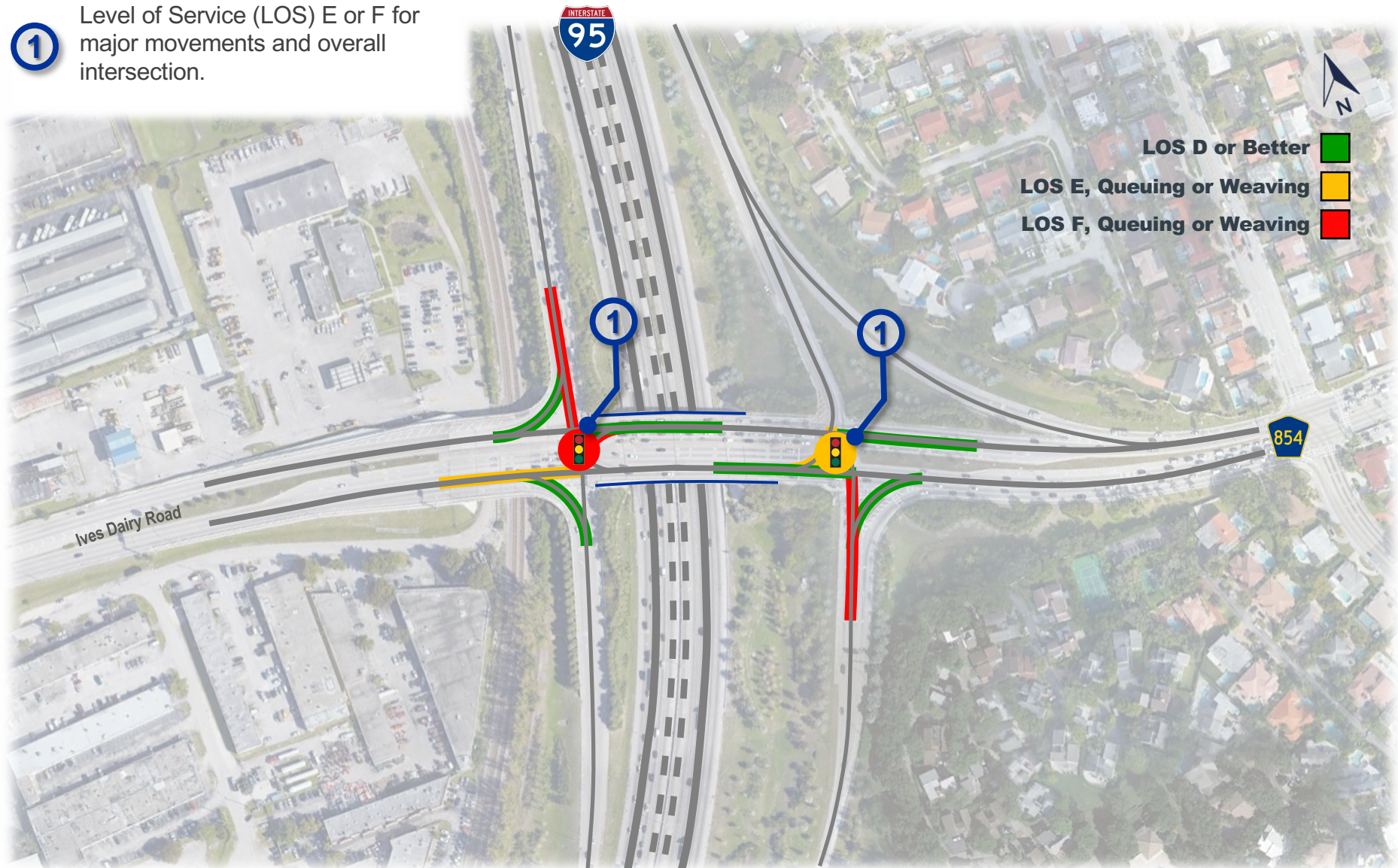
- ① Level of Service (LOS) E or F for major movements.



Ives Dairy Road Interchange

No-Build 2050

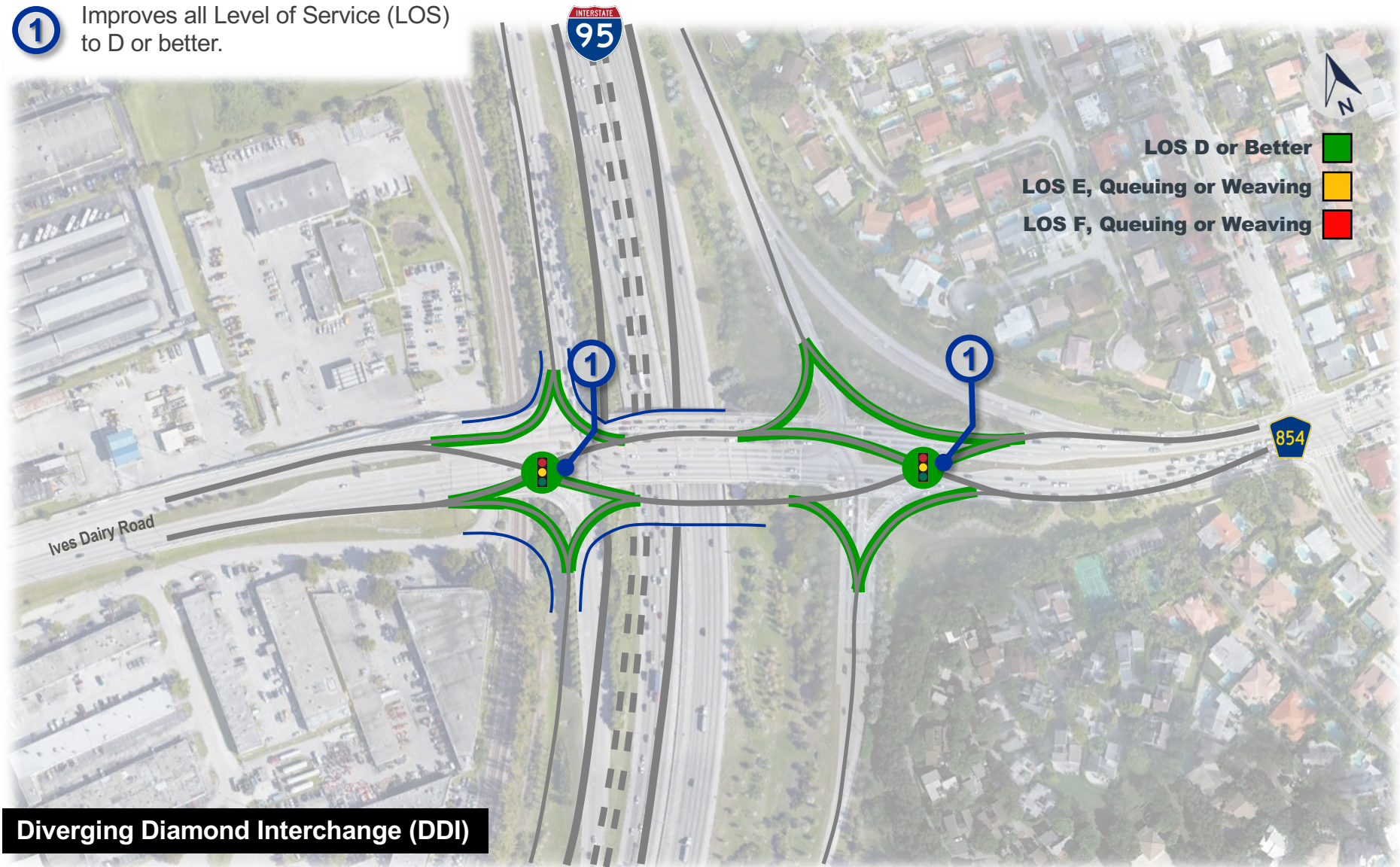
- ① Level of Service (LOS) E or F for major movements and overall intersection.



Ives Dairy Road Interchange

Alternative #1 2050

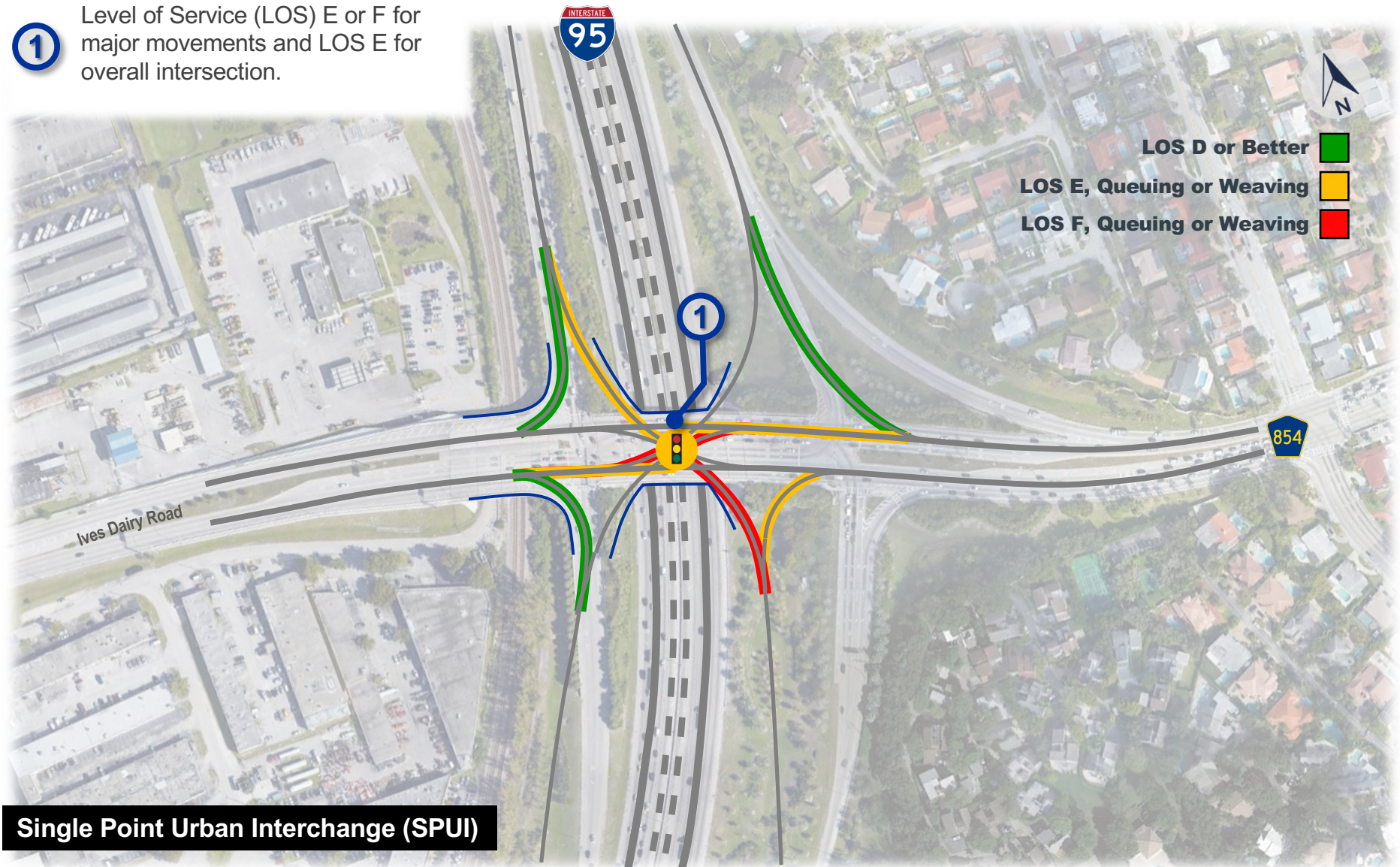
- ① Improves all Level of Service (LOS) to D or better.



Ives Dairy Road Interchange

Alternative #2 2050

- ① Level of Service (LOS) E or F for major movements and LOS E for overall intersection.



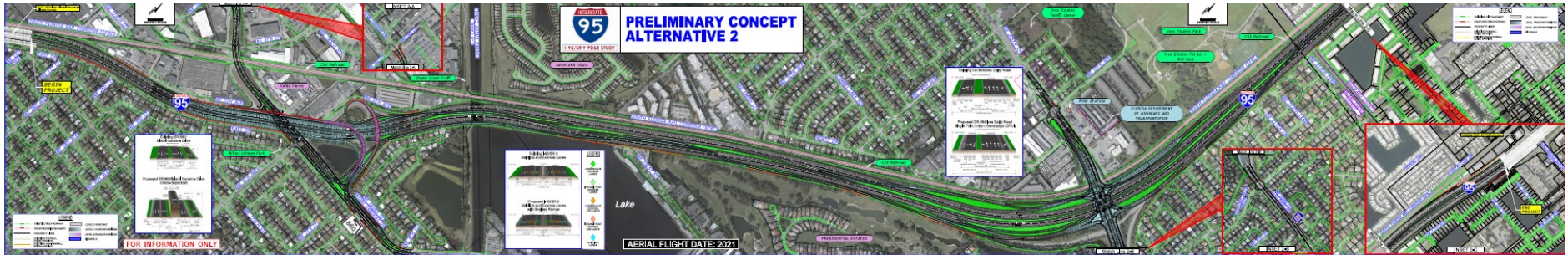
Alternative #1 – Share Screen

► Brief Walk Through of Alternative #1



Alternative #2 – Share Screen

► Brief Walk Through of Alternative #2



Qualitative Alternative Comparison

- ▶ I-95 Mainline – improved capacity – both Build Alternatives
- ▶ I-95 Express Lanes – full 2 lanes – both Build Alternatives
- ▶ SR 860 / Miami Gardens Drive
 - Alternative #2 (grade-separation) configuration provides better LOS than Alternative #1 (at-grade)
- ▶ CR 854 / Ives Dairy Road
 - Alternative #1 (Diverging Diamond Interchange) provides better LOS than Alternative #2 (Single Point Urban Interchange)
- ▶ Both Build Alternatives:
 - Require minor right-of-way
 - Slight encroachment into Milton Littman Park
- ▶ **Alternatives can be combined and will be refined based on feedback received**

Qualitative Alternative Comparison Matrix

ITEM	NO-BUILD	ALTERNATIVE #1	ALTERNATIVE #2
Purpose and Need	Not Met	Met	Met
I-95 Mainline	Increased Congestion and Delay	Added Capacity	Added Capacity
Express Lanes	Increased Congestion and Delay	Added Capacity	Added Capacity
Braided Ramps	None / Weaving Remains	None / Weaving Remains	Yes / Weaving Eliminated
SR 860 / Miami Gardens Drive	Failing LOS	Modestly Improved LOS	Significantly Improved LOS
CR 854 / Ives Dairy Road	Failing LOS	Significantly Improved LOS	Modestly Improved LOS
ROW Impact	None	Minor	Minor
Park Impact	None	Minor	Minor
Trail Access	None	Temporary Closure	Temporary Closure
Bridge Clearance	Remains Sub-standard	Improved to Meet Standards	Improved to Meet Standards
Mobility/Safety/Evacuation	No Improvement	Enhanced	Enhanced
Noise Barrier Walls	No Change	Potential Additional Walls	Potential Additional Walls

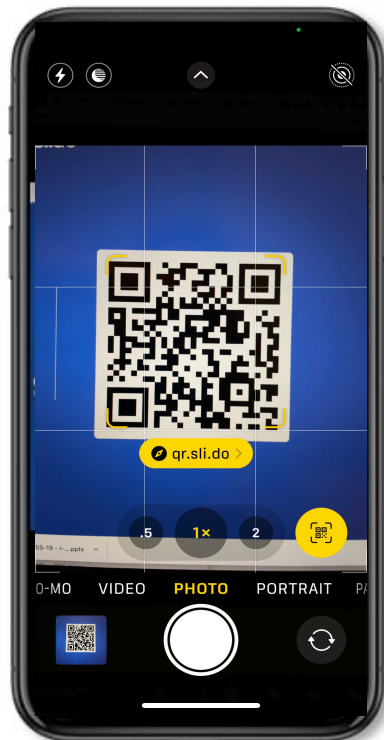
Workshop – Next Steps

- ▶ Slido Interactive Polling
- ▶ Group Q&A Period
 - Panelists:
 - ☐ Roadway
 - ☐ Structures
 - ☐ Environment
- ▶ OPTIONAL:
 - Individual Computer Stations



Polling – Slido Poll Participation Instructions - #3 of 3

Smart Phone – Scan QR Code



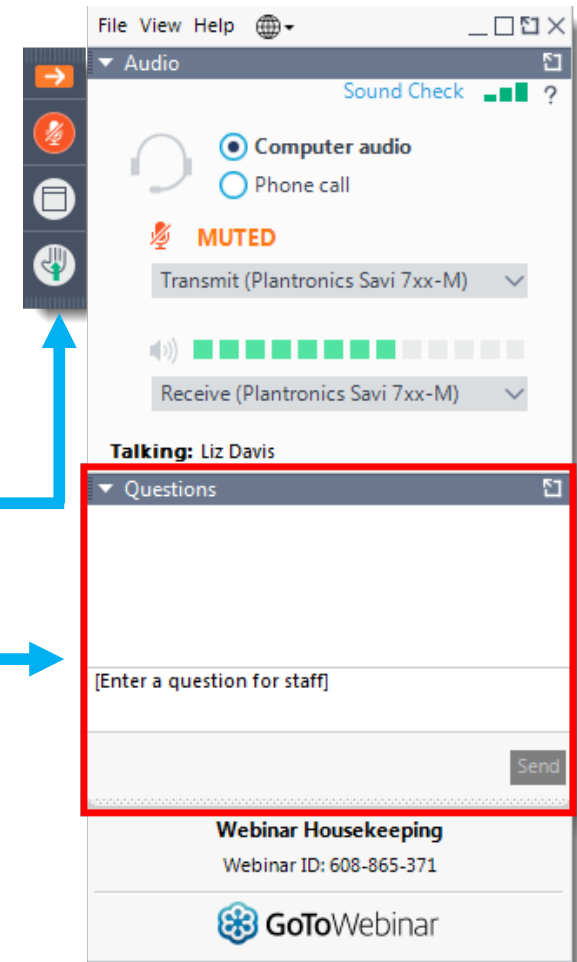
Computer – Visit www.Slido.com /Enter Code: I95POLL



Note: Today's polling results will help provide preliminary input to the team but are not the only factor used in developing potential alternatives. Engineering, environment, cost, and other factors will also help the study team develop potential alternatives that may or may not advance to the next phase of the project.

Question and Answer Period

- Virtual Attendees are Automatically Muted to Start the Meeting
- Providing Comments During Open Discussion Period:
 - Call 1-800-418-0524
 - **Raise hand during comment period, you will be unmuted in order of raising hands**
 - Submit Comments via the “Questions” Box
- Get Technical Assistance
 - Call 1-800-418-0524
- In-person attendees please form a line



Question and Answer Period

- ▶ In-person attendees please form a line.
- ▶ Online attendees submit your comments in the “Questions” box.
- ▶ If you would like to speak, please press the raise hand button.
- ▶ Participants will have three minutes to provide comments.
- ▶ Please clearly state your name and address.

Question and Answer Session

- ▶ Online attendees submit your comments in the “Questions” box.
- ▶ If you would like to speak, please press the raise your hand button.



Contact Information

Auraliz “Lola” Benitez, P.E.

Florida Department of Transportation, District Six

1000 NW 111th Avenue

Miami, FL 33172

(305) 470-5471

Auraliz.Benitez@dot.state.fl.us

Monica Diaz

Community Outreach Specialist

(305) 573-0089

monica@iscprgroup.com

www.fdotmiamidade.com/i95northPDE

Comments

- ▶ Comment Box
- ▶ Email Auraliz.Benitez@dot.state.fl.us
- ▶ Project Website www.fdotmiamidade.com/i95northPDE
- ▶ Customer Survey
- ▶ Mail:

Florida Department of Transportation, District Six
Attn: Auraliz “Lola” Benitez, P.E.
1000 NW 111th Avenue
Miami, FL 33172



I-95/SR 9 PD&E STUDY

Thank You



Optional Individual Computer Station Mapping

- ▶ In-person: please visit our mapping stations in the next room
- ▶ On-line: please submit comments in the “Questions” box or press the raise hand button to speak.

