



SR 994/Quail Roost Drive PD&E Study

From SW 137th Ave to SW 127th Ave
FM 445804-1-22-01

Kick-Off Meeting

January 27, 2022

Si usted necesita traducción durante la reunión por favor comuníquese conmigo. Usted puede presionar el botón de mano levantada, o puede pedir ayuda de traducción a través del chat y un miembro de nuestro equipo lo asistirá.



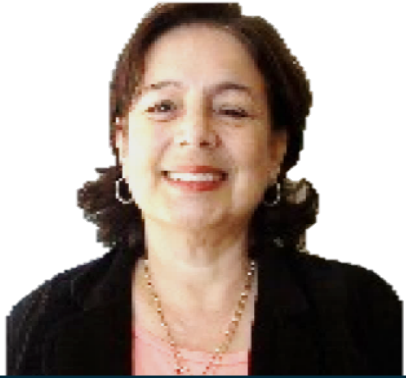
SR 994/Quail Roost Drive PD&E Study

From SW 137th Ave to SW 127th Ave
FM 445804-1-22-01

Kick-Off Meeting

January 27, 2022

: Presenters / Panelists



Project Manager
Elsa N. Riverol, P.E.



Project Manager
Alina Fernandez, P.E.

Gannett Fleming



Engineering
Carlos Cejas, P.E.

Gannett Fleming



Environmental
Amanda De Cun, M.S.

Gannett Fleming

We would like to recognize any federal, state, county, or city officials who may be present.

Please stand or select the raise hand feature on the control panel.

Rules of Engagement

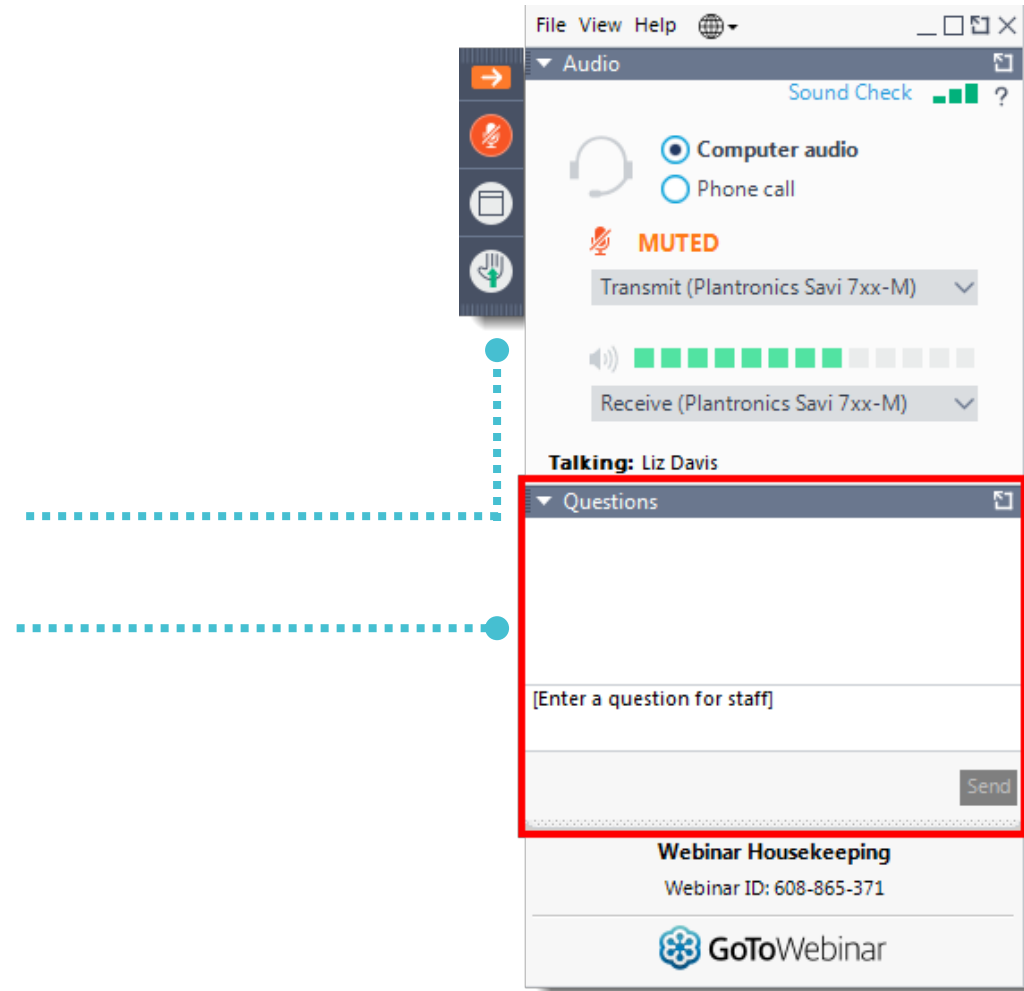
Virtual Attendees are **Automatically Muted** to Start the Meeting

Providing Comments During Open Discussion Period:

- In-person attendees form a line
- Call 1-800-418-0524
- **Raise hand during comment period, you will be unmuted in order of raising hands**
- Submit Comments via the “Questions” Box

Get Technical Assistance

- **Call 1-800-418-0524**



: Title VI Non-Discrimination Compliance

Public participation at this Public Meeting is encouraged and solicited without regard to race, color, national origin, age, sex, religion, disability, or family status.

Persons wishing to express any concerns about Title VI may do so by contacting either:

Florida Department of Transportation
District Six Office
District Six Title VI Coordinator
Nicholas Danu, P.E.
1000 NW 111th Avenue
Miami, Florida 33172
Nicholas.Danu@dot.state.fl.us
(305) 470-5219

Florida Department of Transportation
Central Office
State Title VI Coordinator
Jacqueline Paramore
605 Suwannee Street
Tallahassee, Florida 32399
Jacqueline.Paramore@dot.state.fl.us
(850) 414-4753

: NEPA Assignment Statement

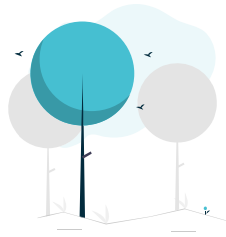
The environmental review, consultation, and other actions required by applicable federal environmental laws for this project are being, or have been, carried out by the FDOT pursuant to 23 U.S.C. § 327 and a Memorandum of Understanding dated December 14, 2016 and executed by the Federal Highway Administration (FHWA) and the FDOT.

: What is a PD&E Study?



Engineering Analysis

Safety
Traffic Operations
Access Management
Right-of-Way
Structures
Drainage
Utilities
Lighting
Landscaping
Cost Estimates



Environmental Analysis

Sociocultural Effects

- Mobility
- Land Use (schools, churches, businesses, etc.)
- Relocation Potential

Cultural Resources

- Archaeological and Historic Resources
- Recreational

Natural Resources

- Wetlands
- Wildlife and Habitat
- Permits

Physical Effects

- Noise
- Air Quality
- Contamination



Public Engagement Program

Public Involvement Plan
Kick-Off Meetings
Elected Officials Briefings
Agency Meetings
Alternatives Workshop
Public Hearing

: PD&E Study Process

WE ARE HERE

IDENTIFY

- Project Initiation
- Kick-Off Meeting

Engineering and Environmental Data Collection

- Elected Officials Briefings
- Transportation Planning Organization/ Subcommittee Meetings
- Interagency Coordination Meetings

EVALUATE

Concept Design Analysis

Environmental Analysis/ Documentation

Comparative Analysis

Engineering Analysis/ Concept Plans

Public Workshop

DOCUMENT

Draft Engineering Reports

Draft Environmental Reports

Elected Officials Briefings

Public Hearing

APPROVE

Final Environmental Reports/ Categorical Exclusion Type 2

Final Engineering Reports

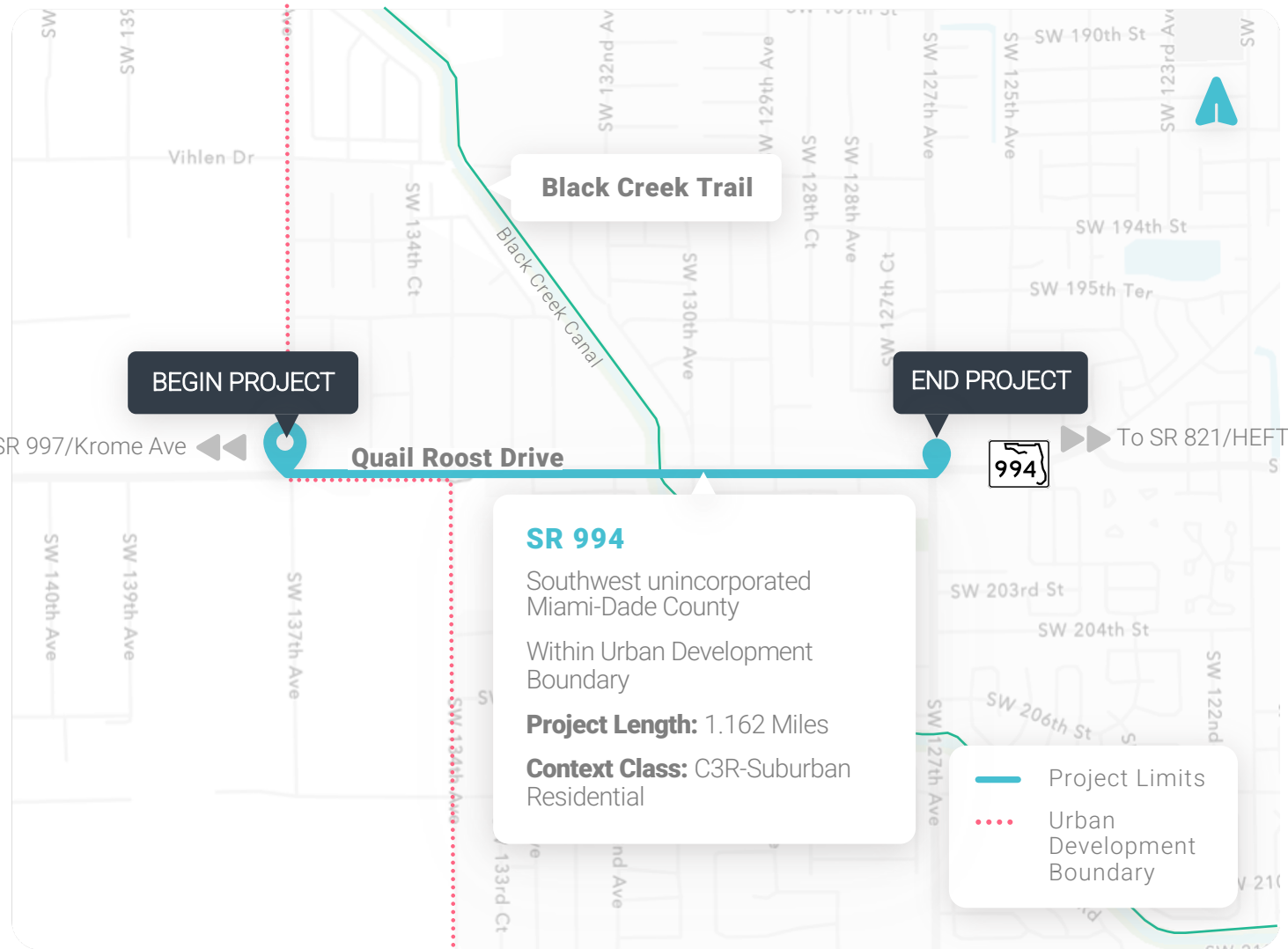
Location & Design Concept Acceptance (LDCA)

CONTINUOUS PUBLIC ENGAGEMENT

: Project Location

SR 994 • SW 200th St • Quail Roost Drive

from West of SW 137 Ave (MP 4.000) to East of SW 127 Ave (MP 5.162)



Land Use

Agricultural & Single-Family
Limits go beyond Urban Development Boundary Line



Key Features

Bridge over Black Creek Canal
Black Creek Trail Crossing



Historic Resources

Historic walls and homes:
NW corner of SW 137th Ave
SW corner of SW 137th Ave
SE corner of SW 134th Ave

: Adjacent Projects



1

FM 443907-1

SR 994/Quail Roost Dr Resurfacing
from Krome Ave to SW 137th Ave
Construction starts 06/2023
Completed by 03/2024

2

MDC Project No. 20040343

SW 137th Ave widening from
US-1 to Quail Roost Dr
Under construction
Completed by 10/2022

3

MDC Project No. 20180004

SW 127th Ave & SW 200th St
Intersection improvements to
add NB turn lane
Design completed 11/2020
Construction starts 07/2022

4

FM 429341-3

SR 994/Quail Roost Dr Resurfacing
from SW 127th Ave to SW 113th Ave
Construction started 09/2021
Completed by 09/2022

: Purpose and Need



Safety

Improve Safety Conditions and Emergency Evacuation and Response Times

78 crashes per year (2014-2018)
Two recent fatal crashes (2016 & 2019)
Four locations in High Crash Spot List
One segment in High Crash Segment List (MP 4.075 to MP 4.961)



Capacity (Transportation Demand)

Improve Operational Conditions and Accommodate Projected Travel Demand

Multiple segments operating at LOS F
Future conditions anticipated to worsen if no improvements implemented

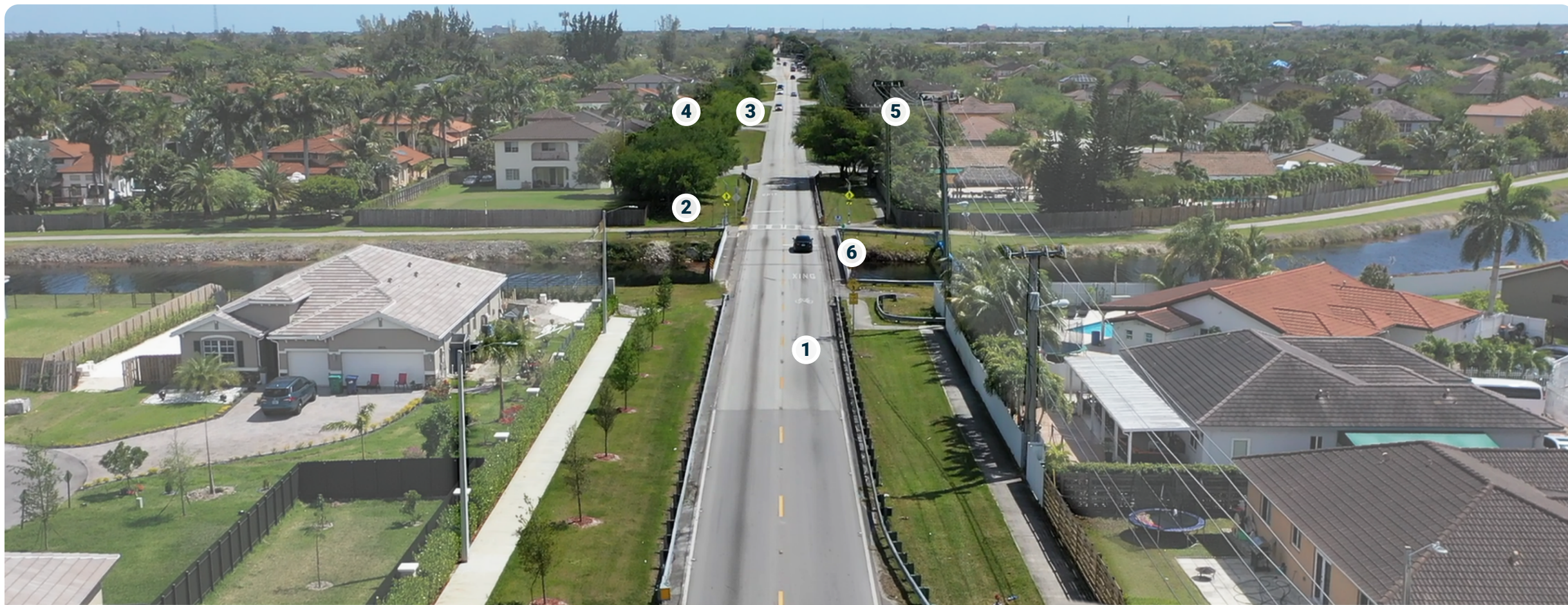


Modal Interrelationships

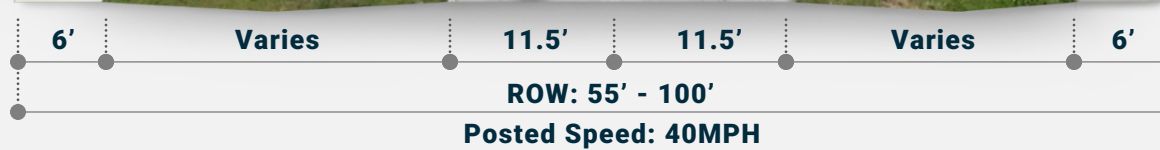
Enhance Mobility Options and Multi-Modal Access

No designated bicycle lanes
Non-continuous sidewalks

: Existing Roadway / Typical Section

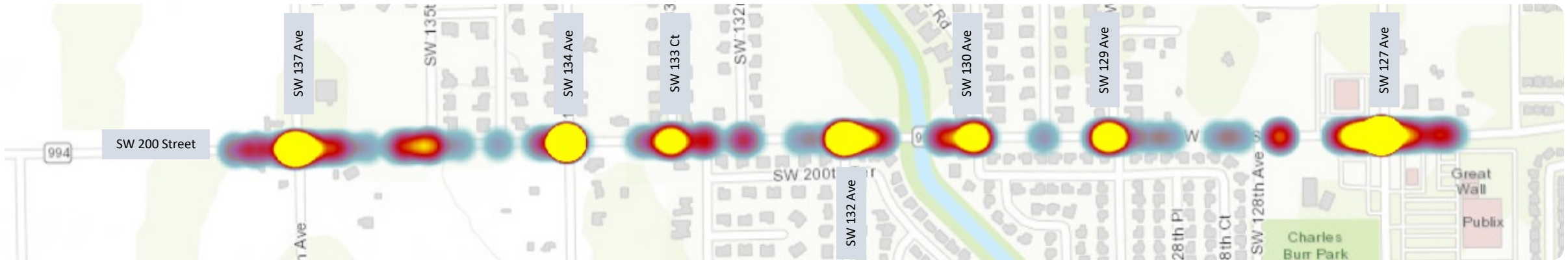


- ① Two-lane undivided roadway
- ② Black Creek Trail Crossing (at-grade mid-block crossing)
- ③ Missing Sidewalks



- ④ Mature Landscaping
- ⑤ Utilities (not always in back of SW)
- ⑥ Bridge over Black Creek Canal

Crash Data



Corridor Wide Crash Summary (2014 – 2018)

390 Crashes

135 Injury Crashes (35%), 1 Fatal Crash (< 1%)

2 Pedestrian/Bicyclist Crashes (< 1%)

Leading Crash Types	2014	2015	2016	2017	2018	5-Year Total	%
Rear End	27	33	38	48	41	187	48%
Angle	10	9	21	22	15	77	20%
Sideswipe	6	8	7	5	17	43	11%
Left Turn	8	7	9	6	10	40	10%

Corridor Wide Crash Summary (2019 – 2020)

170 Crashes

46 Injury Crashes (27%), 1 Fatal Crash (< 1%)

1 Pedestrian/Bicyclist Crashes (< 1%)










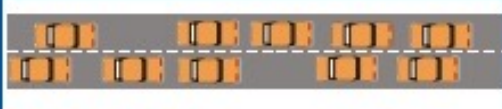


Leading Crash Types	2019	2020	2-Year Total	%
Rear End	43	27	70	41%
Left Turn	22	15	37	22%
Sideswipe	12	8	20	12%
Angle	7	7	14	8%

FDOT High Crash List	Total
High Crash Segments (from SW 137 Ave to east of SW 129 Ave)	1
High Crash Spots (SW 137 Ave, SW 134 Ave, SW 132 Ave & SW 127 Ave)	4

: Traffic Operations

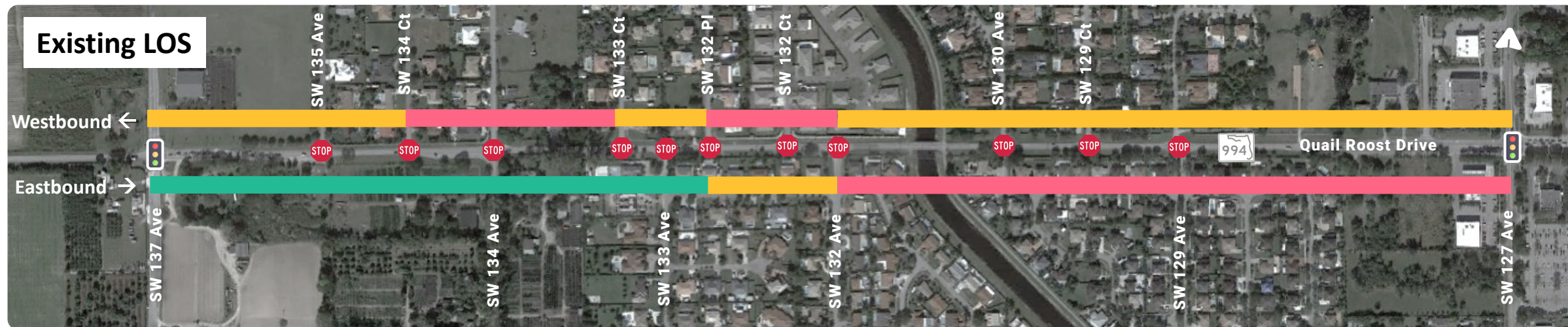
Level of Service (LOS)

Level of Service is a measure of traffic operational conditions. Six levels of service are defined for each type of roadway section and are given letter designations from A to F, with A representing the best operating conditions and F representing the worst operating conditions.

Intersection			Roadway	
<ul style="list-style-type: none">Highly stable, free-flow condition with little or no congestionDelay: <10 seconds/vehicle		LOS A		<ul style="list-style-type: none">Free flowingUninterrupted vehicle
<ul style="list-style-type: none">Stable, free-flow condition with little congestionDelay: 10 to 20 seconds/vehicle		LOS B		<ul style="list-style-type: none">Stable flowOther vehicles are more noticeable
<ul style="list-style-type: none">Free-flow condition with moderate congestionDelay: 20 to 35 seconds/vehicle		LOS C		<ul style="list-style-type: none">Stable flowVehicle operations affected by other vehicles
<ul style="list-style-type: none">Approaching unstable condition with increasing congestionDelay: 35 to 55 seconds/vehicle		LOS D		<ul style="list-style-type: none">High density free flowOperation of vehicle is affected by other vehicles
<ul style="list-style-type: none">Unstable, congested conditionDelay: 55 to 80 seconds/vehicle		LOS E		<ul style="list-style-type: none">High density traffic flow, nearing capacityOperating conditions are extremely poor
<ul style="list-style-type: none">Stop and goDelay: >80 seconds/vehicle		LOS F		<ul style="list-style-type: none">Forced or breakdown flowAmount of traffic exceeds capacity

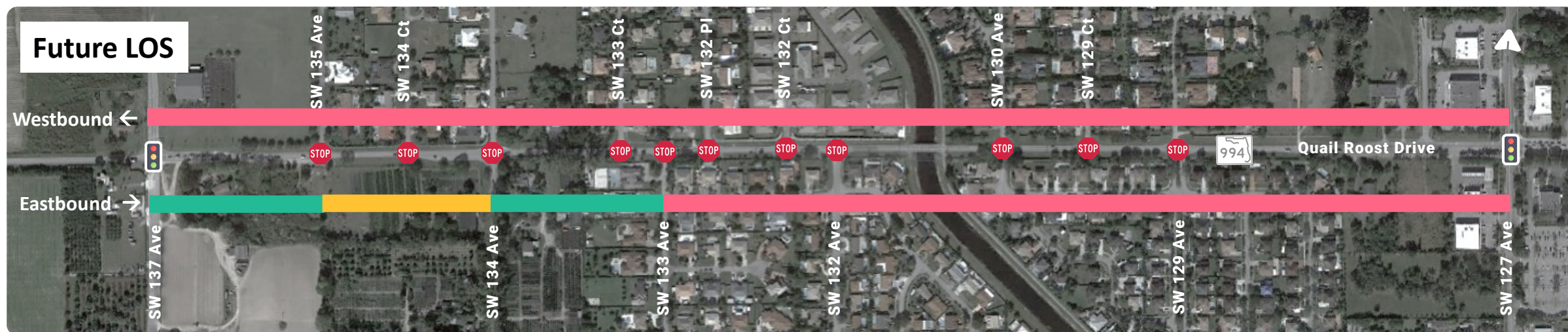
: Traffic Operations – Corridor

Existing Level of Service (LOS) – AM Peak Period



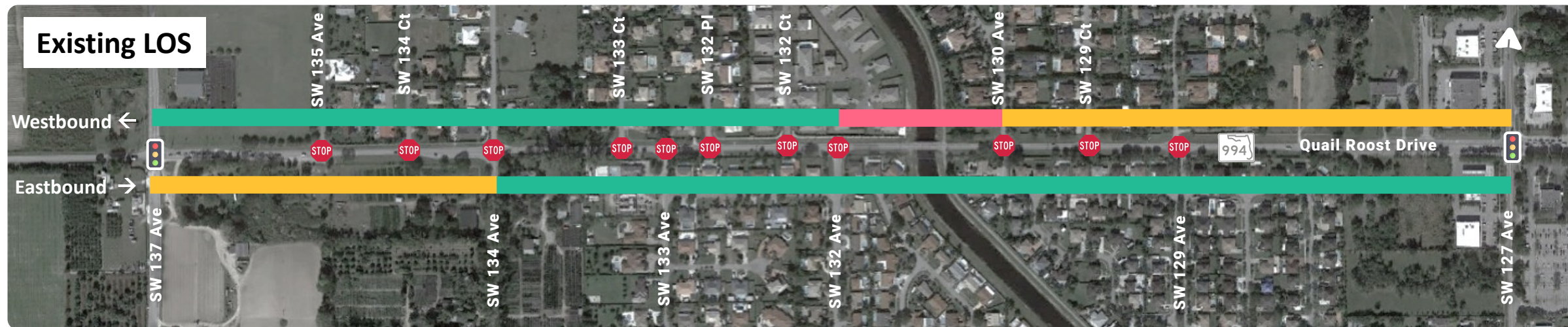
Future LOS without improvements (No Build) – AM Peak Period

Legend: ■ ≤ LOS C ■ LOS D ■ LOS E ■ LOS F



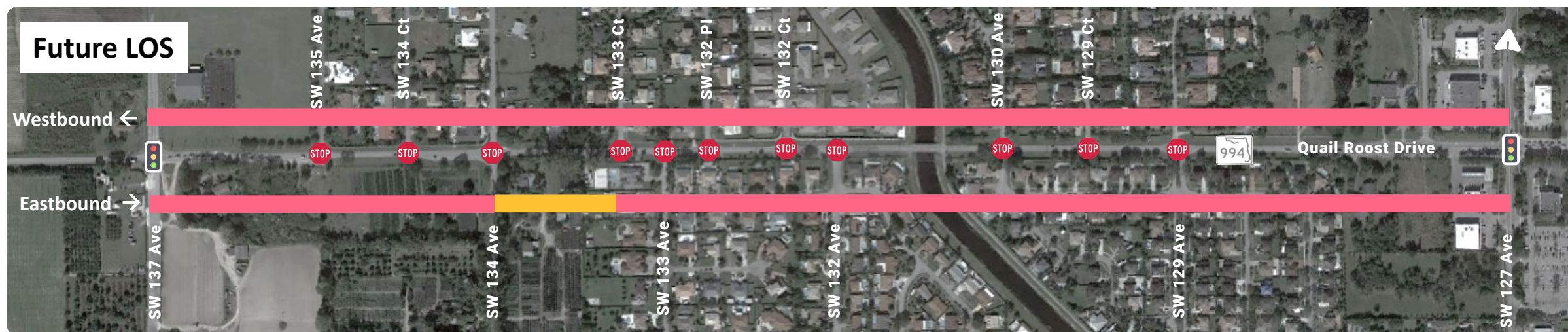
: Traffic Operations – Corridor

Existing Level of Service (LOS) – PM Peak Period



Future LOS without improvements (No Build) – PM Peak Period

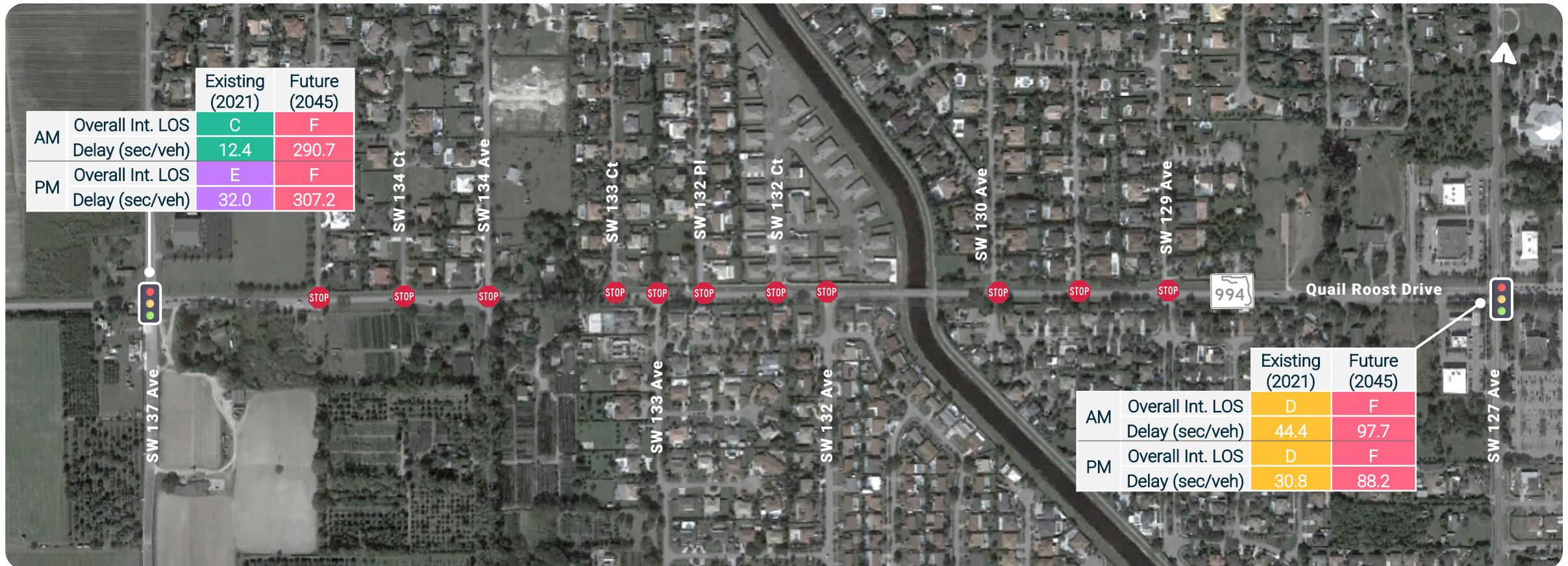
Legend: ■ ≤ LOS C ■ LOS D ■ LOS E ■ LOS F



Traffic Operations – Signalized Intersections

Existing LOS vs Future LOS without improvements (No Build)

Legend



: Traffic Operations – Stop-Controlled Intersections

Existing LOS vs Future LOS without improvements (No Build)

Legend



Existing Bridge (870633) Over Black Creek Canal

- 3-span structure built in 1962 - State Historic Preservation Office Coordination Required
- Functionally Obsolete
- Overhead electric and water line on south side
- Trail crossing on east end
- Substandard Vertical Clearance:
Existing VC = 4.2 ft < 4.5 ft Required



: Multimodal Accommodations

Existing Deficiencies

Missing sidewalks

No bicycle facilities



Environmental Considerations





- Mobility
- Land Use (schools, churches, businesses, etc.)
- Relocation Potential

- Archaeological and Historic Resources
- Recreational

- Wetlands
- Wildlife and Habitat
- Permits

- Noise
- Air Quality
- Contamination

Degree of Effect

 Not Applicable/ No Involvement	 Minimal
 Enhanced	 Moderate

Efficient Transportation Decision Making (ETDM) Screening: No Substantial Issues

: Cultural Resources

Three historic resources potentially eligible for inclusion in National Register (NRHP)

- ❶ Talbott Estate – southeast corner of Quail Roost Drive & SW 134th Avenue intersection (*County designated*)
- ❷ MacDonell House and Walls – northwest corner of Quail Roost Drive & SW 137th Avenue intersection (*County designated*)
- ❸ Southwest corner of Quail Roost Drive & SW 137th Avenue intersection – potentially significant



: Natural Resources

Wetlands

C-1W Canal – Bridge widening with impacts to surface waters

Possible isolated wet swales or wetlands (dependent upon pond locations and ROW acquisition)

Wetland involvement anticipated as **Minimal**

Protected Species

Florida Bonneted Bat (FBB) – Within the South Florida Urban Bat Area

Manatee (C-1W) exclusion devices at outfalls; In-Water Work Construction Conditions

Construction Conditions for the **Eastern Indigo Snake**

Wood Stork CFA (dependent on wetland impacts)

American Crocodile (no suitable habitat)

Miami-Dade Keys Plants field surveys

Burrow observed at C-1W Bank

Biscayne Sole Source Aquifer – EPA coordination



Burrow
Observed at C-1W Bank



Florida Bonneted Bat (FBB)
Protected Species



Manatee
Protected Species



C-1W Canal
Bridge Widening Impacts

: Anticipated Permits

South Florida Water Management District

Environmental Resource Permit

Stormwater Quantity and Quantity Control
C-1 Canal Dredge & Fill
Canal Turbidity Control
Manatee Protection

Right Of Way Occupancy Permit Modification

Bridge Replacement
Canal Access for Maintenance and Operations

Water Use Permit

Dewatering Construction Activities

US Army Corps of Engineers

Section 408 Review for the C-1W Canal/Bridge

USACE/FDEP Section 404 Dredge & Fill Permit

Possible delegation to FDEP as Assumed Waters
USACE Nationwide permit for Maintenance may apply
Coordination with USFWS

Florida Department of Environmental Protection (FDEP)

NPDES Construction Generic Permit

EPA Coordination required for Biscayne Sole Source Aquifer

Miami-Dade County Coordination on tree impacts



: Public Engagement

Coordination

Miami-Dade County

Mayor Levine Cava (former Area Commissioner)

District 8 - Commissioner Danielle Cohen Higgins (new District Commissioner)

Miami-Dade DTPW

Emergency Responders

MDFR #52

District 9 – Kionne McGhee (West of SW 127th Ave)

Community Council 14

South Florida Water Management District (SFWMD)



Public Engagement Meetings

Elected Official/Agency Kick-Off Meeting (January 27, 2022)

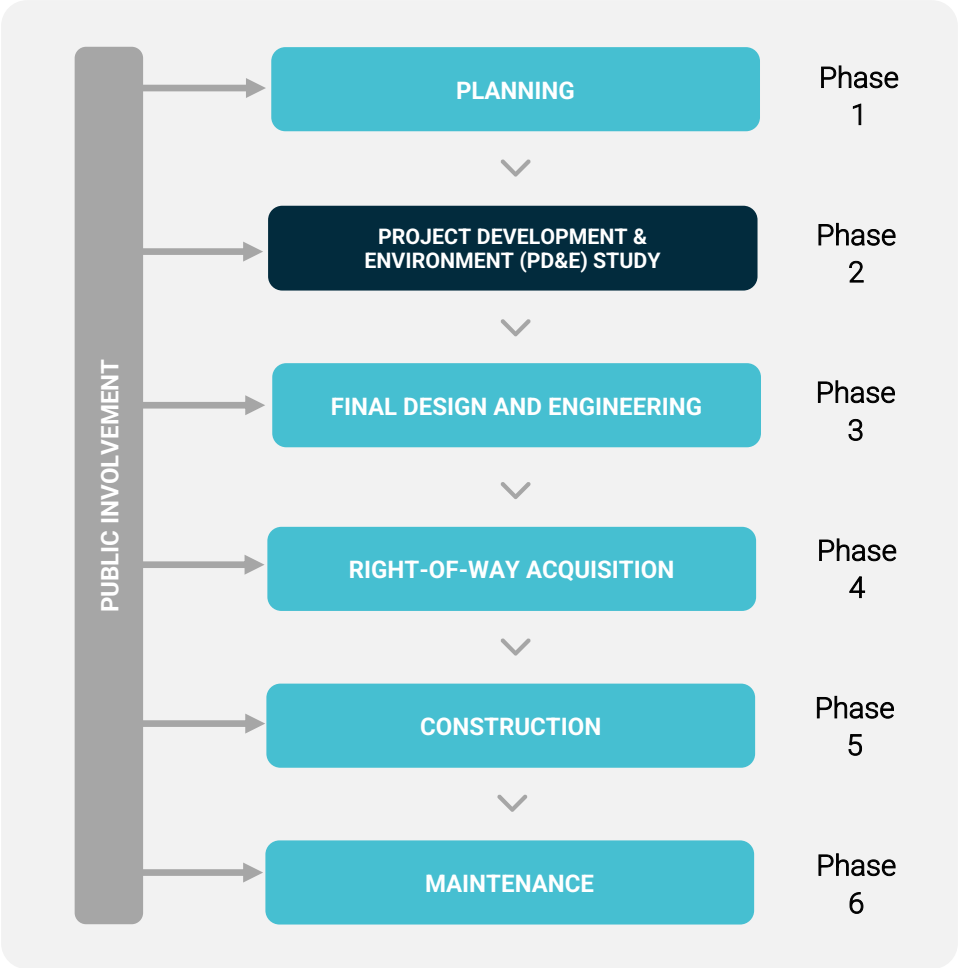
Public Kick-Off Meeting (January 27, 2022)

Alternatives Workshop (August 2022)

Public Hearing (May 2023)



: Project Schedule



Project Milestone	Date
Begin PD&E Study	June 2021
Kick-Off Meeting	January 2022
Alternatives Workshop	August 2022
Public Hearing	May 2023
End PD&E Study (Location Design Concept Acceptance)	November 2023
Design Complete	November 2025
Construction	Not Programmed

: Contact Information

Elsa N. Riverol, P.E.

Florida Department of Transportation, District Six
1000 NW 111th Avenue, Room 6251
Miami, FL 33172
(305) 470-5105
Elsa.Riverol@dot.state.fl.us

Monica Diaz

Community Outreach Specialist
(305) 573-0089
monica@iscprgroup.com

www.fdotmiamidade.com/QuailRoostPDE



- > **Comment Box**
- > **Email:** Elsa.Riverol@dot.state.fl.us
- > **Project Website:** www.fdotmiamidade.com/QuailRoostPDE
- > **Customer Survey**
- > **Mail:**

Florida Department of Transportation, District Six
Attn: Elsa N. Riverol, P.E.
1000 NW 111th Avenue, Room 6251
Miami, FL 33172



: Rules of Engagement

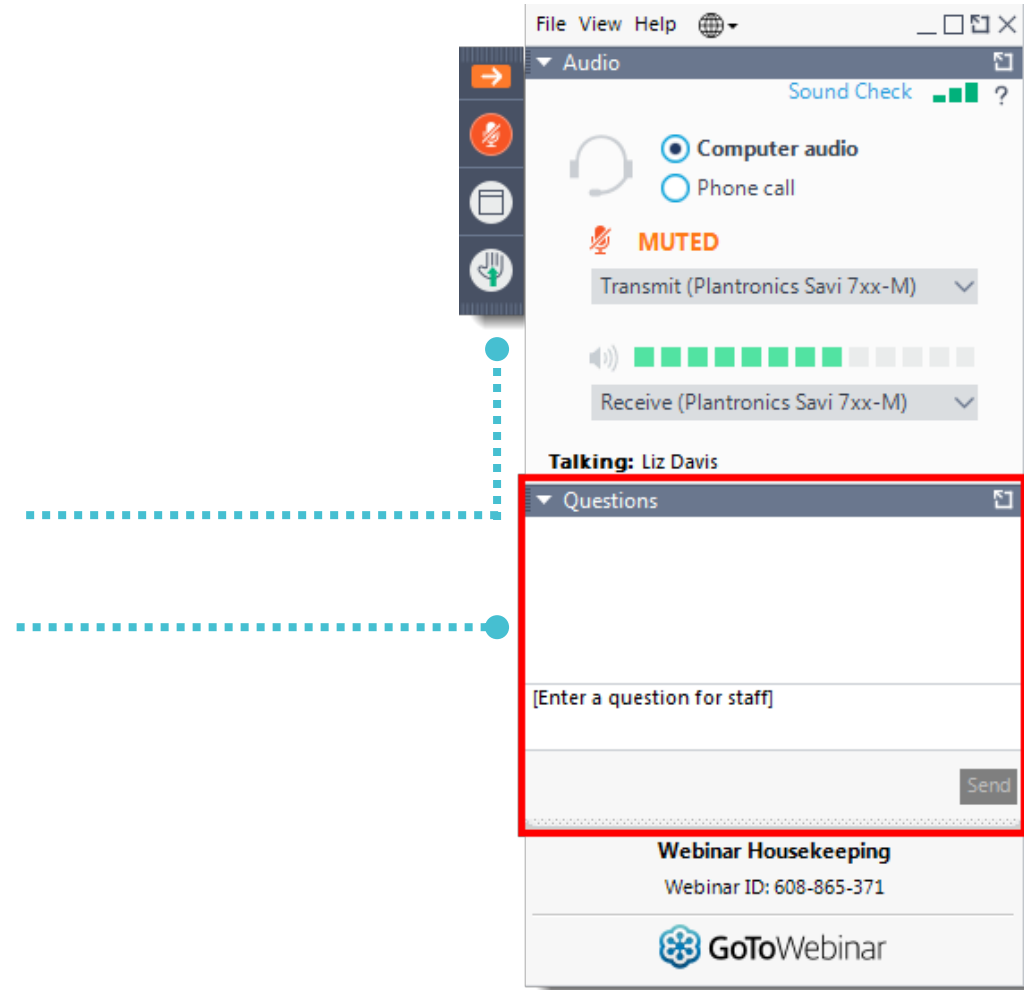
Virtual Attendees are **Automatically Muted** to Start the Meeting

Providing Comments During Open Discussion Period:

- In-person attendees form a line
- Call 1-800-418-0524
- **Raise hand during comment period, you will be unmuted in order of raising hands**
- Submit Comments via the “Questions” Box

Get Technical Assistance

- **Call 1-800-418-0524**



: Open Discussion



In-person attendees please form a line.

Online attendees submit your comments in the “Questions” box.
If you would like to speak, please press the raise your hand button.

Participants will have **three minutes** to provide comments.

Please clearly state your **name** and **address**.



: Thank You





Thank You.