

Kick Off Meeting
July 29, 2021



PD&E Study I-95 / SR 9 from South of SR 860 / Miami Gardens Drive to Broward County Line

FM # 414964-1-22-01
ETDM # 14419



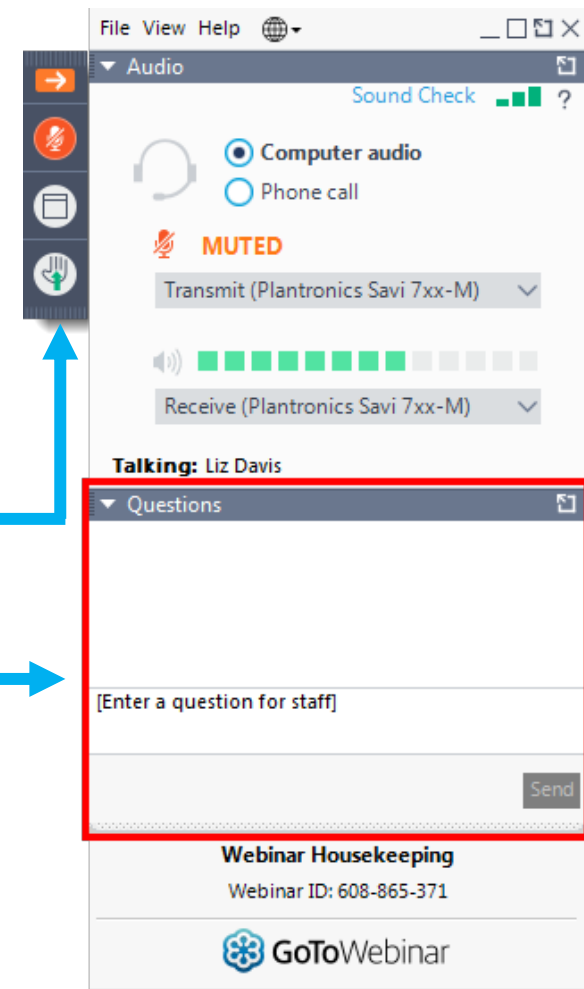
I-95/SR 9 PD&E STUDY



Si usted necesita traducción durante la reunión por favor comuníquese conmigo. Usted puede presionar el botón de mano levantada, o puede pedir ayuda de traducción a través del chat y un miembro de nuestro equipo lo asistirá.

Rules of Engagement

- Virtual Attendees are Automatically Muted to Start the Meeting
- Providing Comments During Open Discussion Period:
 - Call 1-800-418-0524
 - **Raise hand during comment period, you will be unmuted in order of raising hands**
 - Submit Comments via the “Questions” Box
- Get Technical Assistance
 - Call 1-800-418-0524



Title VI Non-Discrimination Compliance

- Public participation at this Public Hearing is encouraged and solicited without regard to race, color, national origin, age, sex, religion, disability, or family status.
- Persons wishing to express any concerns about Title VI may do so by contacting either:

Florida Department of Transportation
District Six Office
District Six Title VI Coordinator
Nicholas Danu, P.E.
1000 NW 111 Avenue
Miami, Florida 33172
Nicholas.Danu@dot.state.fl.us
(305) 470-5219

Florida Department of Transportation
Central Office
State Title VI Coordinator
Jacqueline Paramore
605 Suwannee Street
Tallahassee, Florida 32399
Jacqueline.Paramore@dot.state.fl.us
(850) 414-4753

NEPA Assignment Statement

The environmental review, consultation, and other actions required by applicable federal environmental laws for this project are being, or have been, carried out by the FDOT pursuant to 23 U.S.C. § 327 and a Memorandum of Understanding dated December 14, 2016 and executed by the Federal Highway Administration (FHWA) and the FDOT.

We would like to recognize any federal, state, county, or city officials who may be present.

Please stand or select the raise hand feature on the control panel.

Presenters/Panelists



Auraliz "Lola" Benitez, P.E.
FDOT Project Manager



I-95/SR 9 PD&E STUDY



Jenn L. King, P.E.
Consultant Project Manager

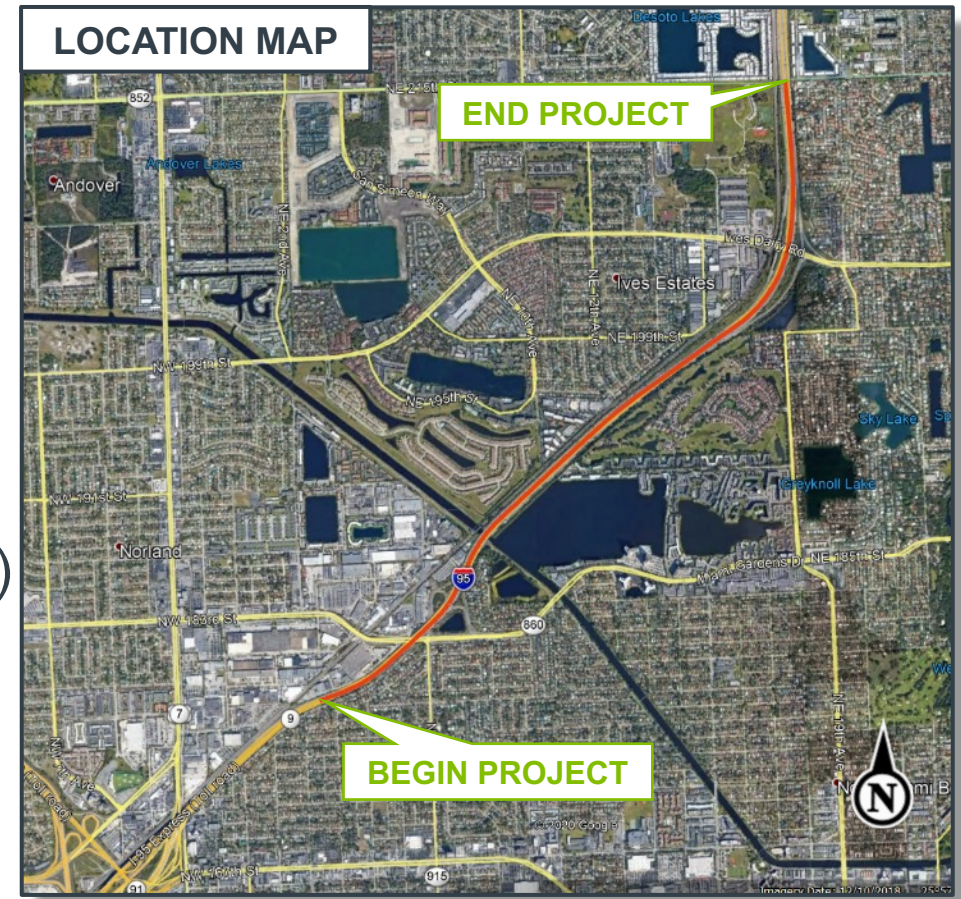


Keith Stannard
Environmental Lead/Panelist



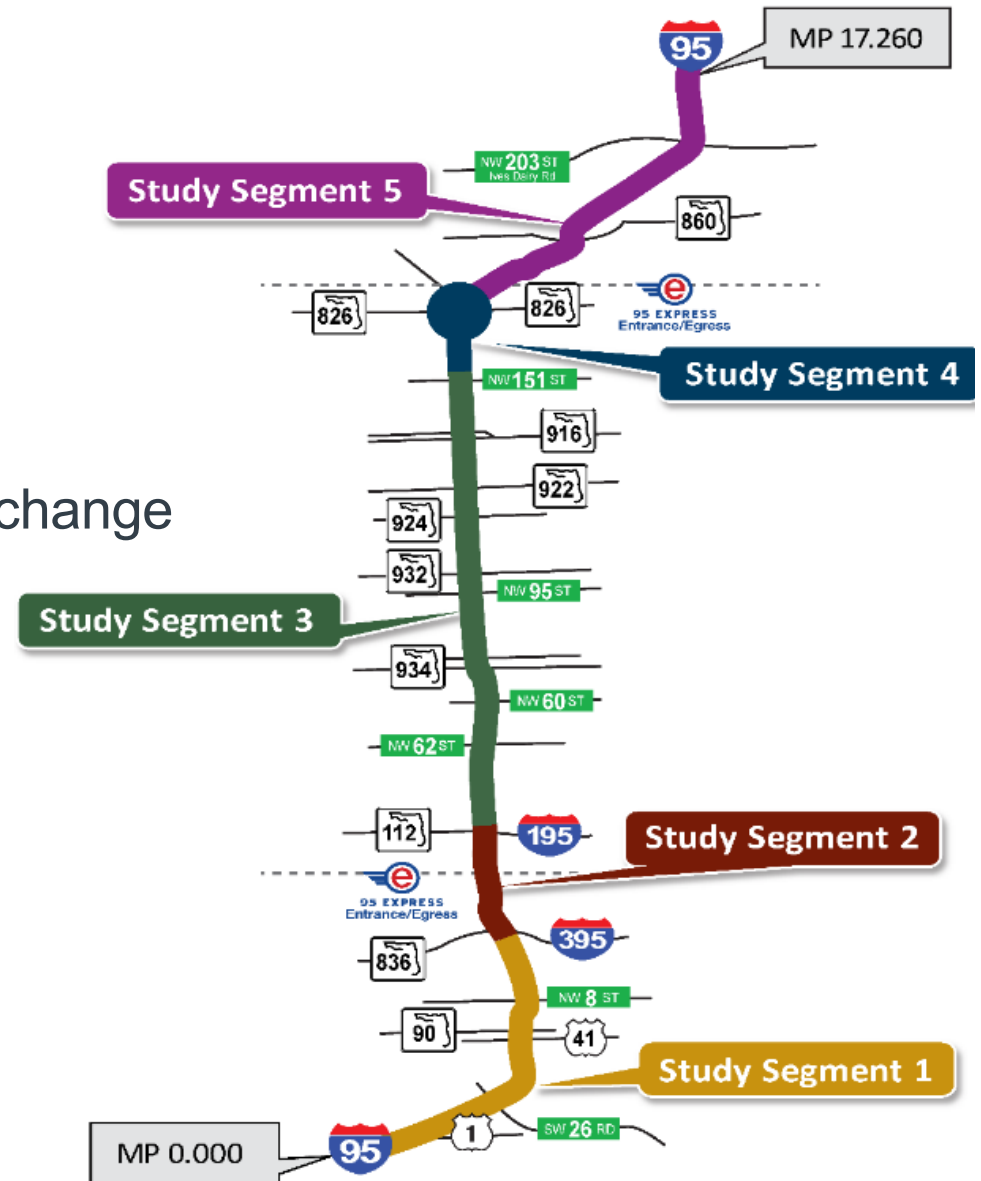
Project Overview

- ▶ Conduct Project Development and Environment (PD&E) Study
 - Approximately 4 miles
 - Urban Interstate
 - With Express Lanes
 - 2 major arterial interchanges
 - ❑ SR 860/Miami Gardens Drive (MGD)
 - ❑ Ives Dairy Road (IDR)
- ▶ Class of Action (COA)
 - Categorical Exclusion Type-2 (CE-2)
- ▶ Analyze impacts
 - Engineering
 - Environmental
 - Community
- ▶ Goal is to obtain Location Design Concept Acceptance (LDCA)



Background - Corridor Planning Study (CPS)

- ▶ I-95 (SR 9 / SR 9A) CPS
 - US1 to Broward County Line
- ▶ 17.260 miles long
- ▶ 5 Study Segments
- ▶ This PD&E is Segment #5 / “North”
 - From north of Golden Glades Interchange (GGI) to Broward County Line

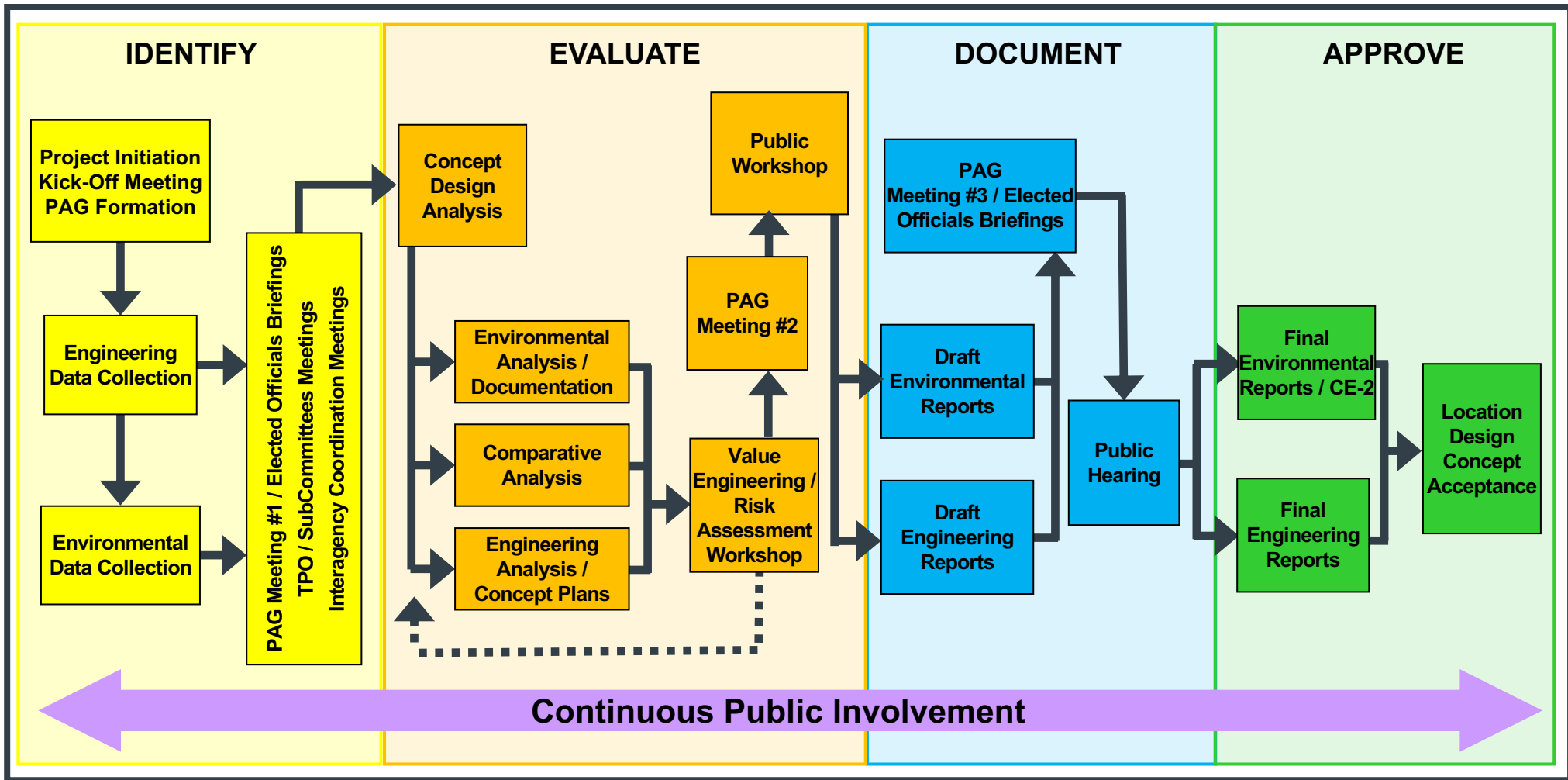


What is a PD&E Study?

- ▶ Identification of Study Area
- ▶ Engineering Analysis
- ▶ Environmental Analysis and Assessment
 - Wetlands, Endangered Species, Cultural Features, Contamination Assessment, Air/Noise, and Parks/Recreation
- ▶ Community Features Assessment
 - Schools, Churches, Businesses, Emergency Facilities, etc.
- ▶ Preliminary Conceptual Engineering Plans
- ▶ Cost Estimates
- ▶ Coordination
 - Federal, State, and Local Agencies and Governmental Entities
- ▶ Public Involvement Process



PD&E Study Process



PAG – Project Advisory Group
TPO – Transportation Planning Organization
CE-2 – Categorical Exclusion Type 2

Purpose & Need (P&N)

► Regional

- Coordinate with GGI project to the south
- Coordinate with I-95 PD&E to the north in Broward County
- Consistent Express Lanes (EL) along corridor up to Palm Beach County

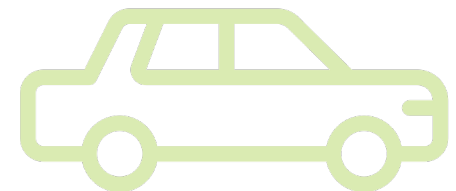
► Goals

- Provide additional capacity / relieve congestion
- Minimize impacts to adjacent projects / throw-away work
- Reduce Right-of-Way (ROW) and construction costs
- Enhance hurricane evacuation route
- Improve emergency response times
- Increase mobility options and transit use



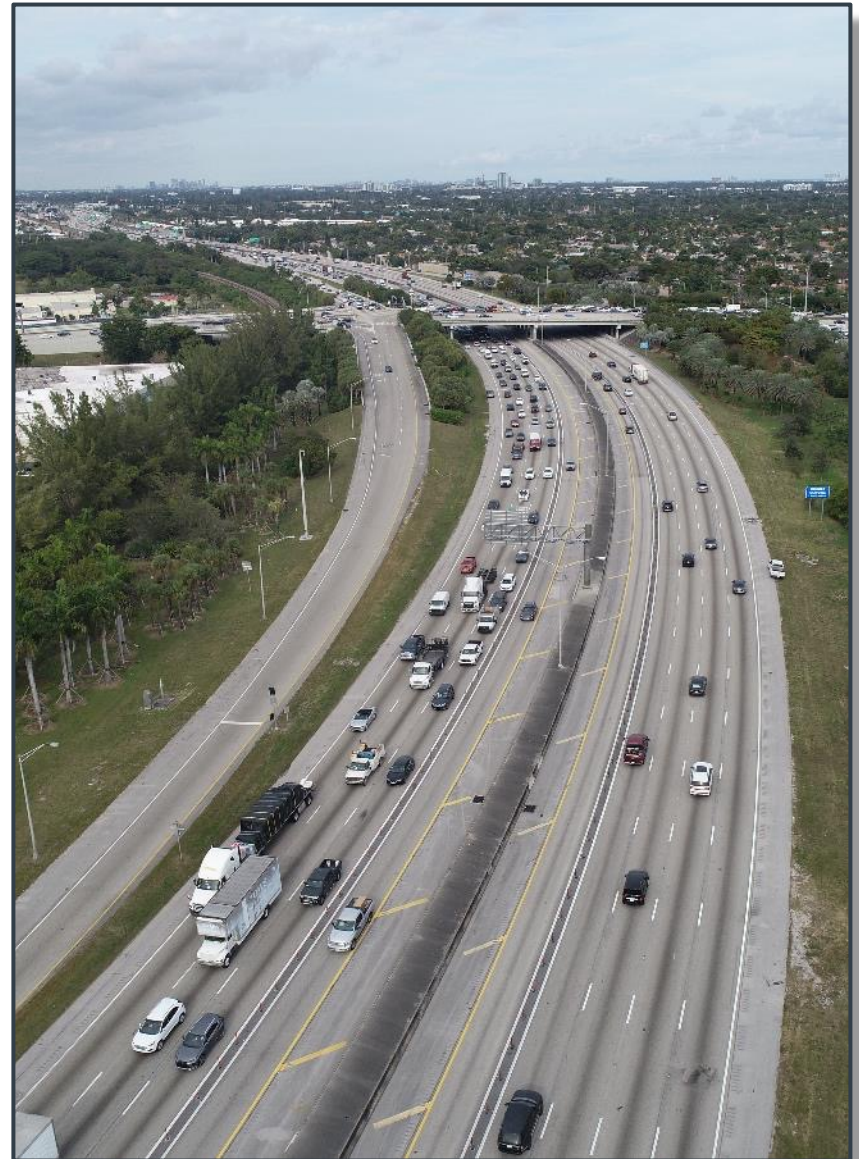
Existing Roadway / Typical Section

- ▶ I-95 / SR 9 on Strategic Intermodal System (SIS) and National Highway System (NHS)
- ▶ Unincorporated Miami-Dade County and City of North Miami Beach
- ▶ SR 860 / Miami Gardens Drive (MGD) / Exit 14
- ▶ NE 203 Street / Ives Dairy Road (IDR) / Exit 16
- ▶ Posted 55 MPH on I-95 and 40 MPH on MGD and IDR
- ▶ Existing typical section
 - 6-8 General Use Lanes
 - 2-4 Express Lanes
- ▶ ROW
 - Minimum 200 feet near GGI
 - 1,240 feet IDR interchange
- ▶ Proposed Mainline from CPS
 - Minimum 11-ft wide travel lanes, 12-ft preferred
 - 10-ft wide express lane inside shoulders
 - 4-ft wide buffer with plastic poles

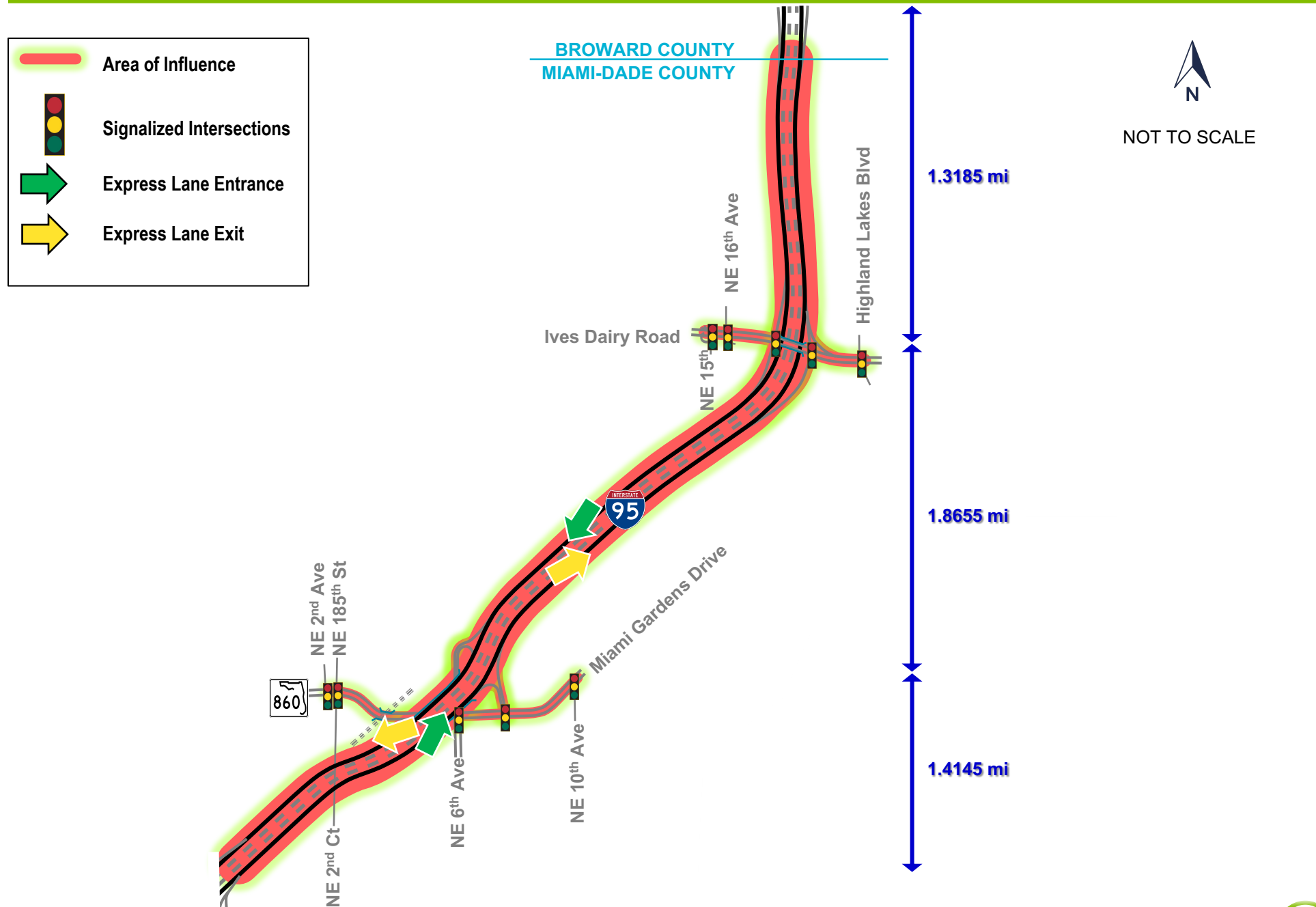


Key Engineering Topics

- ▶ Mainline I-95 – capacity, constructability, safety
- ▶ Express Lanes – emergency response, access points
- ▶ MGD and IDR – congestion, weaving, ramps, multimodal
- ▶ ROW – avoid or minimize
- ▶ Drainage
- ▶ Utility impacts
- ▶ Coordination with ongoing area projects

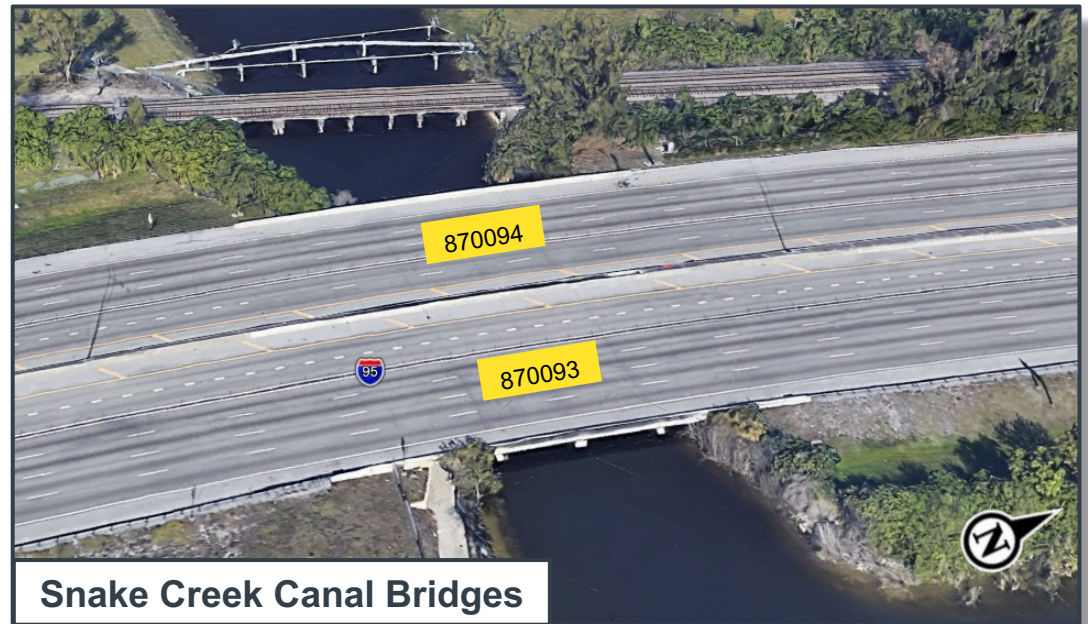


Preliminary Traffic Study Area



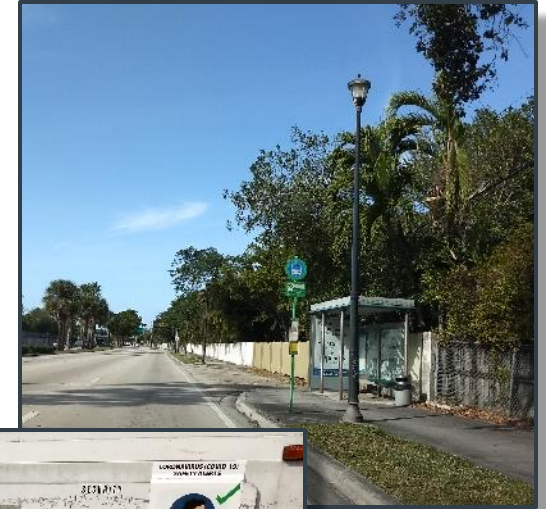
Existing Structures

- ▶ 7 Existing Bridges
 - 2 Bridges over Water
 - 2 Bridges over Railroad
 - 3 Bridges at Interchanges
- ▶ Noise Walls
- ▶ Mechanically Stabilized Earth (MSE) Walls
- ▶ Coordination
 - Miami-Dade County (MDC) Parks (PROS)
 - Railroad



Multimodal / Railroad

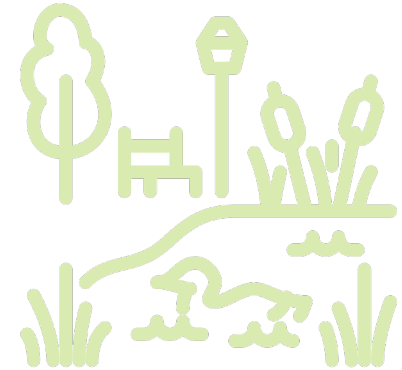
- ▶ Coordinate with Miami-Dade Transit (MDT)
 - Local Bus Routes 95, 99, 183
 - MDT Garage located off of MGD
- ▶ Coordinate with Broward County Transit (BCT)
 - 95-X Buses (Express Bus Service)
- ▶ Coordinate with Railroad
 - Tri-Rail
 - AmTrak
 - CSX
- ▶ Investigate a new Park'N'Ride Lot at IDR



Existing Environmental Issues

► Key Environmental Issues

- Sociocultural Effects
 - Section 4(f) Recreational Resources
 - Mobility (Enhanced)
- Archaeological and Historic Resources
- Natural Resources
 - Threatened and Endangered Species
 - Wetlands and Surface Waters
 - Critical Habitat
- Physical Effects
 - Noise
 - Contamination



**No substantial
issues**

Social and Economic							Cultural			Natural					Physical					
Land Use Changes	Social	Relocation Potential	Farmlands	Aesthetic Effects	Economic	Mobility	Section 4(f) Potential	Historic and Archaeological Sites	Recreation Areas	Wetlands and Surface Waters	Water Quality and Quantity	Floodplains	Wildlife and Habitat	Coastal and Marine	Noise	Air Quality	Contamination	Infrastructure	Navigation	Special Designations
2	2	2	N/A	2	2	1	3	3	3	3	2	2	2	2	2	2	3	3	3	N/A

Anticipated Permits



Agency Coordination	Anticipated Environmental Permits / Approvals
US Army Corps of Engineers (USACE)	USACE Section 404 Permit
US Environmental Protection Agency (USEPA)	USACE Section 408 Approval (Works of Congress)
US Fish and Wildlife Service (USFWS)	SFWMD Individual Environmental Resource Permit (ERP)
South Florida Water Management District (SFWMD)	SFWMD ROW Occupancy Permit
Florida Department of Environmental Protection (FDEP)	SFWMD Water Use Permit (Dewatering)
Florida Fish and Wildlife Conservation Commission (FWC)	FDEP National Pollutant Discharge Elimination System (NPDES) Permit
Florida Division of Historical Resources (DHR)/State Historic Preservation Officer (SHPO)	
Miami-Dade County Department of Regulatory and Economic Resources (RER) / Parks, Recreation and Open Spaces (PROS)	

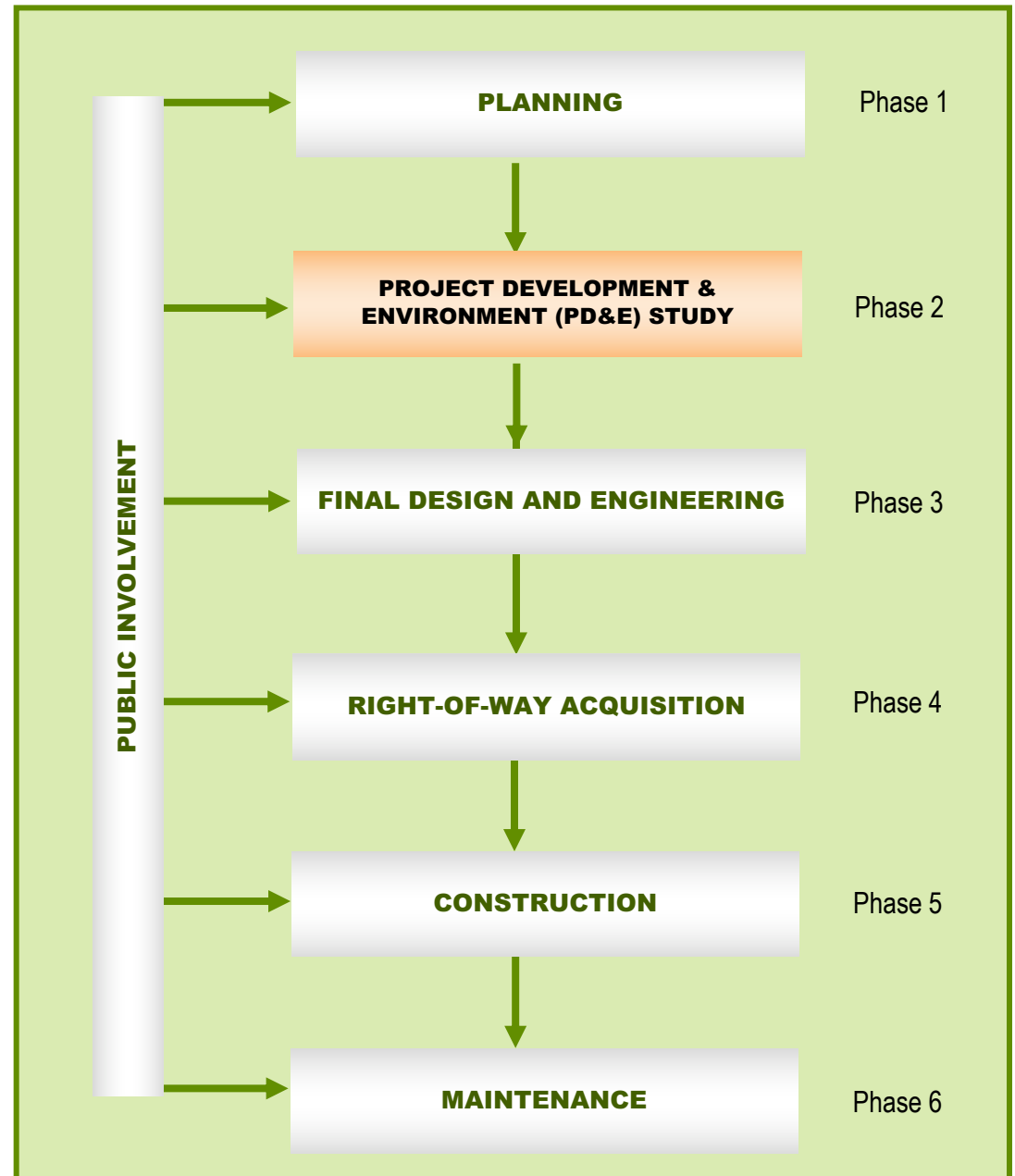
Public Involvement Program

- ▶ Public Involvement Plan (PIP)
- ▶ Kick-Off Meetings
- ▶ Elected Officials Briefings
- ▶ Agency Meetings
- ▶ Project Advisory Group (PAG)
- ▶ Alternatives Workshop
- ▶ Public Hearing



Project Status

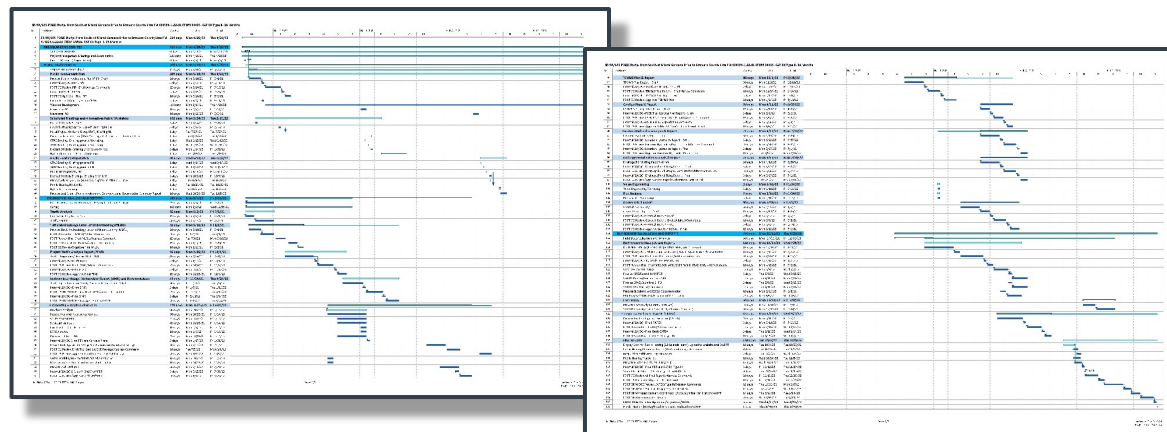
► Early stage of PD&E Phase



PD&E Project Schedule

► 24 months for Categorical Exclusion Type-2

Project Milestone	Date
Begin Project	May 2021
Kick-Off Meeting	July 2021
Alternatives Workshop	February 2022
Public Hearing	November 2022
End Project (Location Design Concept Acceptance)	May 2023



Work Program Phases

Project Phase	Fiscal Year
Corridor Planning Study	2019-2020
PD&E Study	2021-2023
Final Design	2024-2026
Right-of-Way	Not Funded
Construction	Not Funded



Contact Information

Auraliz “Lola” Benitez, P.E.
Florida Department of Transportation, District Six
1000 NW 111th Avenue
Miami, FL 33172
(305) 470-5471
Auraliz.Benitez@dot.state.fl.us

Monica Diaz
Community Outreach Specialist
(305) 573-0089
monica@iscprgroup.com

www.fdotmiamidade.com/i95northPDE

Comments

- ▶ Comment Box
- ▶ Email Auraliz.Benitez@dot.state.fl.us
- ▶ Project Website www.fdotmiamidade.com/i95northPDE
- ▶ Customer Survey
- ▶ Mail:

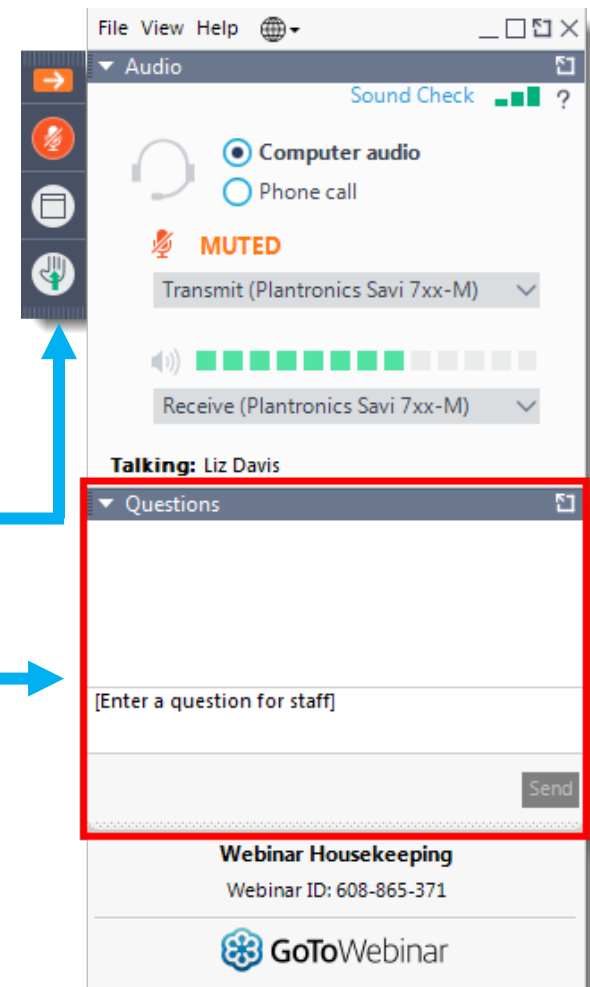
Florida Department of Transportation, District Six
Attn: Auraliz “Lola” Benitez, P.E.
1000 NW 111th Avenue
Miami, FL 33172



I-95/SR 9 PD&E STUDY

Rules of Engagement

- Virtual Attendees are Automatically Muted to Start the Meeting
- Providing Comments During Open Discussion Period:
 - Call 1-800-418-0524
 - **Raise hand during comment period, you will be unmuted in order of raising hands**
 - Submit Comments via the “Questions” Box
- Get Technical Assistance
 - Call 1-800-418-0524



Open Discussion

- In-person attendees please form a line
- Online attendees submit your comments in the “Questions” box.
- If you would like to speak, please press the raise your hand button.
- Participants will have three minutes to provide comments.
- Please clearly state your name and address.

Comments

- ▶ Comment Box
- ▶ Email Auraliz.Benitez@dot.state.fl.us
- ▶ Project Website www.fdotmiamidade.com/i95northPDE
- ▶ Customer Survey
- ▶ Mail:

Florida Department of Transportation, District Six
Attn: Auraliz “Lola” Benitez, P.E.
1000 NW 111th Avenue
Miami, FL 33172



I-95/SR 9 PD&E STUDY

Thank You

