



Florida Department of Transportation

RON DESANTIS
GOVERNOR

JARED W. PURDUE, P.E.
SECRETARY

For Immediate Release

September 30, 2022

Contact: Tish Burgher

(305) 470-5277 | Tish.Burgher@dot.state.fl.us

State Road (SR) 826/Palmetto Expressway Capacity Project Lane and Road Closures and Detours *Sunday, October 2 to Friday, October 7*

MIAMI, Fla. – Drivers will experience road, lane and shoulder closures and detours near SR 826/Palmetto Expressway. The closures are necessary to allow for testing the soil, surveying the area, and conducting drainage work from Sunday, October 2, to Friday, October 7, 2022.

- Full closure of NW 77 Avenue from NW 95 Street to NW 99 Street, 9 p.m. - 5 a.m., Sunday, October 2, through Friday, October 7. *See detour map #1 below.*
- Full closure of NW 77 Avenue from south of NW 95 Street (beginning bend of Frontage Road) 9 p.m. – 5 a.m., Sunday, October 2, through Thursday, October 6. *See detour map #2 below.*
- The NW 77 Avenue shoulder and the W 20 Avenue shoulder from SR 25/US 27/Okeechobee Road to NW 122 Street/W 68 Street (specific to survey locations) will be closed 9 p.m. - 6 a.m., Monday, October 3, through Thursday, October 6.
- One lane on NW 77 Avenue and W 20 Avenue from SR 25/US 27/Okeechobee Road to NW 122 Street/W 68 Street will be closed 9 p.m. – 6 a.m., Monday, October 3, through Friday, October 7.

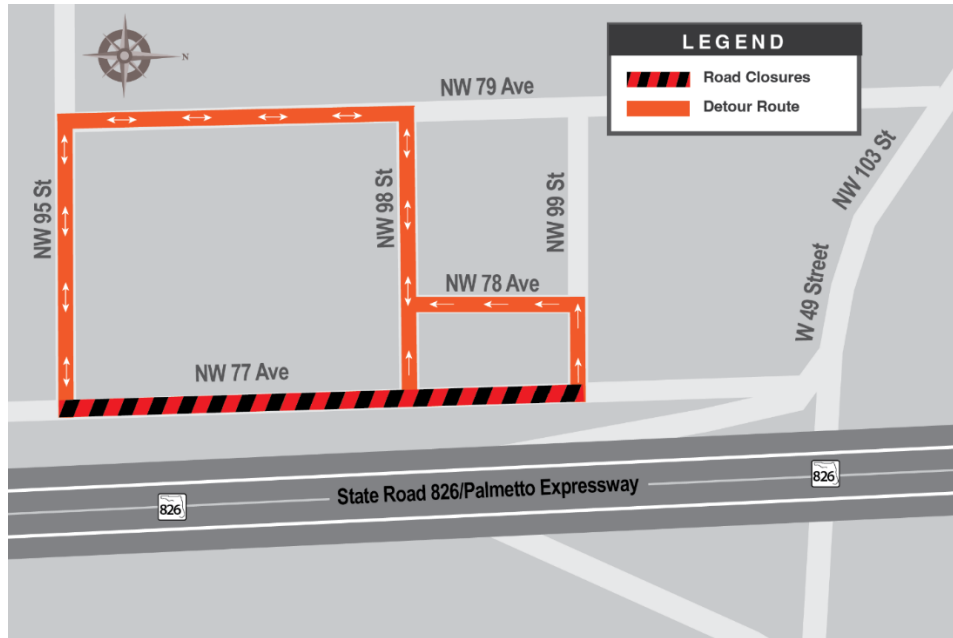
Please note that this schedule may change due to bad weather or other unforeseen conditions. Drivers should anticipate delays and seek alternate routes if possible.

The Palmetto Expressway Capacity Improvement Project includes modifying the southbound flyover from westbound NW 103 Street/W 49 Street to southbound SR 826 and widening the SR 826 bridge over NW 103 Street/W 49 Street to create an additional general-purpose lane. In addition, the express lane entrance at NW 154 Street/Miami Lakes Drive will be relocated to NW 103 Street/W 49 Street to allow access to the express lanes from NW 154 Street and NW 122 Street/W 68 Street. Construction began in April 2022 and will last about 30 months. This project will cost an estimated \$66 million.

Drivers are encouraged to log on to www.fl511.com before they travel to get real-time traffic and lane closure information. FDOT would like to remind drivers that wearing a safety belt is the single most effective way to protect people and reduce fatalities in motor vehicle crashes.

For additional information, please call FDOT's Public Information Office at (305) 470-5349 or contact Community Outreach Specialist Maria Camacho at (305) 731-7699 or Maria.Camacho@qcausa.com. You can also visit the project website at: www.826palmetto.com.

Detour Map #1



Detour Map #2



###

FDOTMiamiDade.com | [@MyFDOT_Miami](https://www.instagram.com/MyFDOT_Miami) | [Facebook.com/MyFDOTMiami](https://www.facebook.com/MyFDOTMiami)

The Florida Department of Transportation's mission is to provide a safe transportation system that ensures the mobility of people and goods, enhances economic prosperity, and preserves the quality of the state's environment and communities. The department is committed to building a transportation system that not only fits the current needs of Florida's residents and visitors, but also enhances mobility throughout the state to accommodate its consistent and rapid growth. The unique nature of the Sunshine State and its year-round warm climate provides numerous opportunities to achieve the department's mission through multiple transportation modes including highways/streets, air, rail, sea, spaceports, transit, and the ever-expanding deployment of bicycle & pedestrian facilities