



Florida Department of Transportation

RON DESANTIS
GOVERNOR

1000 N.W. 111 Avenue
Miami, Florida 33172

JARED W. PERDUE, P.E.
SECRETARY

For Immediate Release

October 19, 2022

Contact: Tish Burgher

(305) 470-5277 | Tish.Burgher@dot.state.fl.us

Full Nighttime Closure of Southbound SR 25/ US 27/Okeechobee Road

Starts October 24

MIAMI, Fla. – On Monday, October 24, 2022, the southbound lanes along SR 25/US 27/Okeechobee Road between NW 154 Street and NW 117 Avenue will be closed and detoured nightly to the northbound lanes. Travel lanes will be reduced to one lane in each direction. This closure will take place between the hours of 9 p.m. and 5 a.m. for approximately one month.

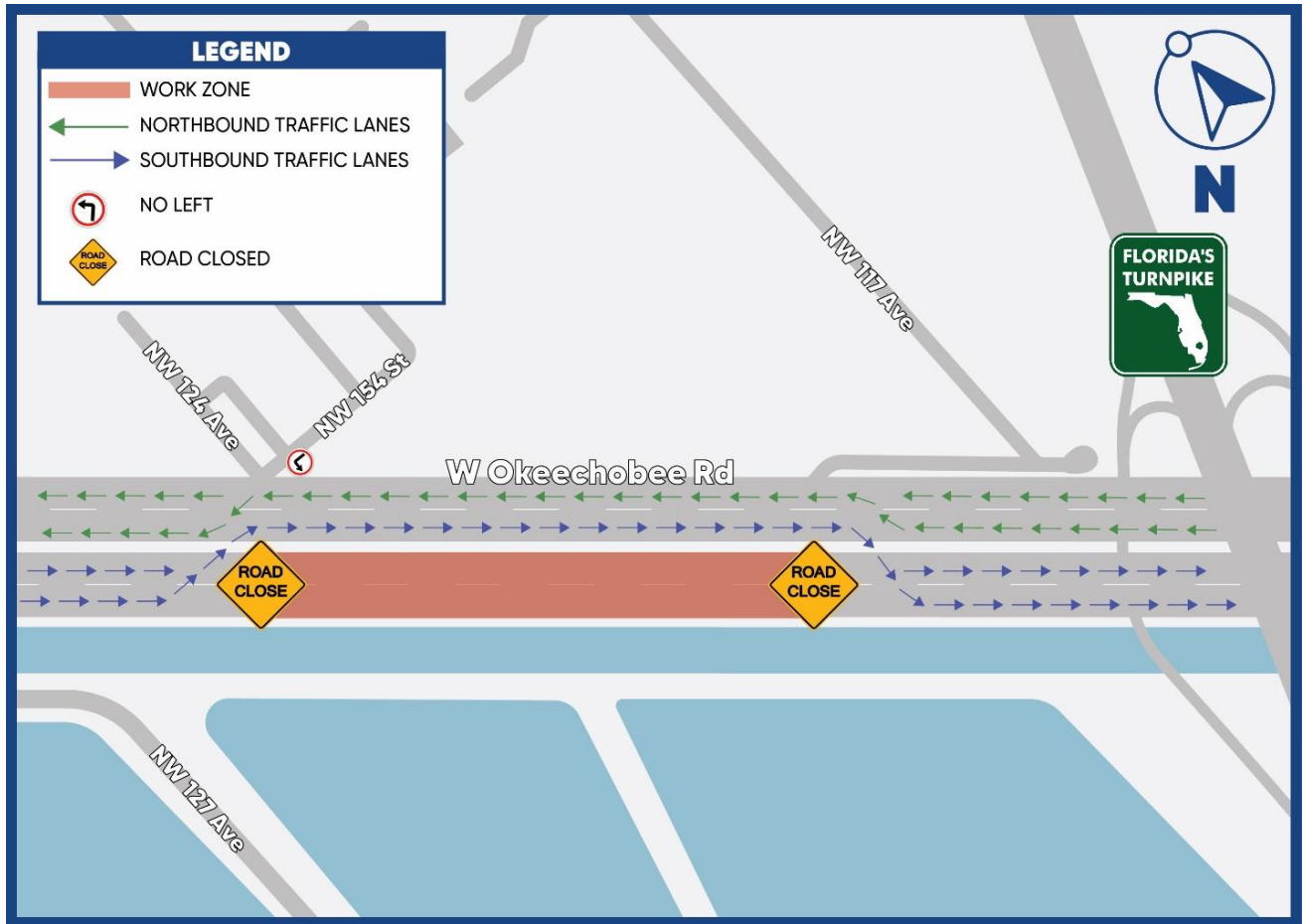
Please note that this schedule may change due to bad weather or other unforeseen conditions.

This project is part of the corridor wide reconstruction of the SR 25/US 27/Okeechobee Road from the Broward County Line to SR 826/Palmetto Expressway. This work will improve safety, enhance mobility along this Strategic Intermodal Systems (SIS) corridor, and inspire innovative transportation solutions, connecting commuters throughout Miami-Dade County.

For more information about the project or closure, please contact Senior Community Outreach Specialist Maria Alzate at (305) 560-8218 or by email at Maria@iscprgroup.com. You can also visit the project website: www.fdotmiamidade.com/okeechobee.

Drivers are encouraged to log on to www.fl511.com before they travel to get real-time traffic and lane closure information. The Florida Department of Transportation reminds motorists to always drive safely and avoid distractions while driving. Remember to put down cell phones. Florida law restricts motorists from using a wireless device in a school zone or an active construction zone.

[Detour Map](#)



###

FDOTMiamiDade.com | [@MyFDOT_Miami](https://www.facebook.com/MyFDOTMiami) | [Facebook.com/MyFDOTMiami](https://www.facebook.com/MyFDOTMiami)

The Florida Department of Transportation's mission is to provide a safe transportation system that ensures the mobility of people and goods, enhances economic prosperity, and preserves the quality of the state's environment and communities. The department is committed to building a transportation system that not only fits the current needs of Florida's residents and visitors, but also enhances mobility throughout the state to accommodate its consistent and rapid growth. The unique nature of the Sunshine State and its year-round warm climate provides numerous opportunities to achieve the department's mission through multiple transportation modes including highways/streets, air, rail, sea, spaceports, transit, and the ever-expanding deployment of bicycle & pedestrian facilities