



I-395/SR 836/I-95 DESIGN-BUILD PROJECT

Financial Project Numbers: 251688-1-52-01, 423126-1-52-01, 423126-2-52-01, 429300-2-52-01

Community
Safety
Mobility
Sustainability

The I-395/SR 836/I-95 Project is a partnership between the Florida Department of Transportation (FDOT) and the Greater Miami Expressway Agency (GMX), with construction limits on State Road (SR) 836 beginning at NW 17 Avenue and continuing through the SR 836/I-395/I-95 (Midtown) Interchange to the MacArthur Causeway Bridge. The limits on I-95 are from NW 8 Street to NW 29 Street. The project is expected to be completed in late 2027 at a cost of \$840 million. This schedule could change due to weather or other unforeseen circumstances.

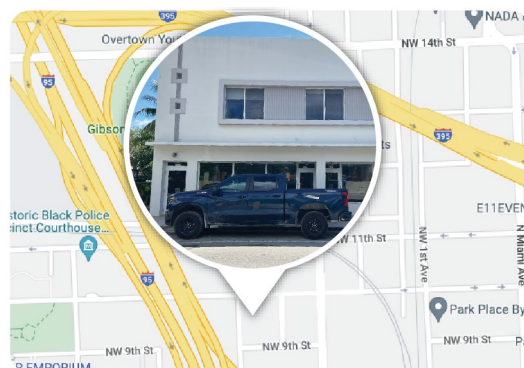
THIS PROJECT WILL:

Transform our **COMMUNITY** by reconstructing I-395, including an iconic bridge over Biscayne Boulevard and allow for the connection of Overtown, Downtown Miami, Omni, and Edgewater to each other by a contiguous trail that includes community activity areas.

Increase **MOBILITY** for residents, commuters and tourists by increasing capacity on SR 836, I-95 and I-395. SR 836 will be double-decked to allow for a direct connection between SR 836 and the MacArthur Causeway. Mobility in Overtown will also be improved with the connection of NW 2 Avenue under I-395 and improvements to arterial roads.

Enhance **SAFETY** for commuters by reducing weaving movements associated with drivers entering and exiting SR 836 and I-95 at the Midtown Interchange. Safety will also be enhanced for pedestrians under the new bridges with creation of the trail and enhanced crosswalks.

Be designed and constructed with **SUSTAINABILITY** in mind for commuters, residents and local maintaining agencies. The features of the trail have been designed to incorporate long term durability and sustainability while achieving aesthetic and community enhancements.




COMMUNITY OUTREACH


The project team looks forward to informing the community of all project milestones and creating a solid understanding of the proposed improvements.

**The project office is currently located at:
937 NW 3 Avenue, Miami, Florida, 33136**

**For the latest project information visit:
I-395Miami.com**

 **Oscar Gonzalez III,**
Senior Community Outreach Specialist
Cell: 786-280-0983
Oscar.Gonzalez2@dot.state.fl.us

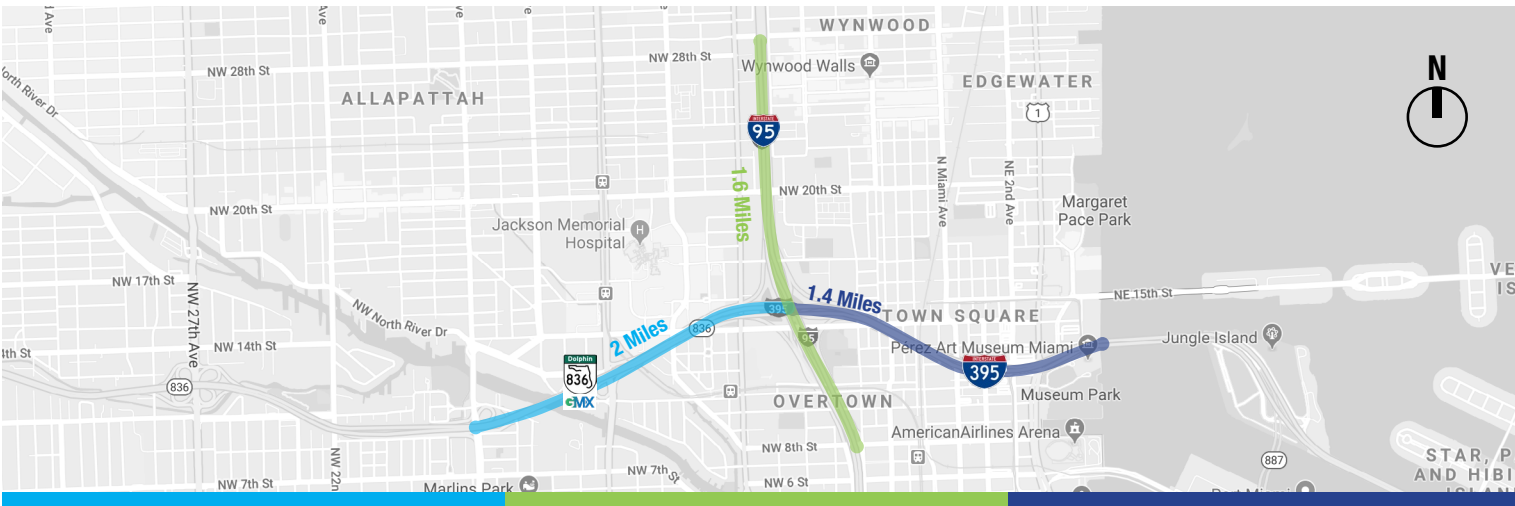
 **Auraliz Benitez, P.E.,**
Design Project Manager
FDOT District Six
1000 NW 111 Avenue, Miami, FL 33172
Auraliz.Benitez@dot.state.fl.us

 **Jacqueline Sequeira, P.E.,**
Construction Project Manager
FDOT District Six
1000 NW 111 Avenue, Miami, FL 33172
Jacqueline.Sequeira@dot.state.fl.us





DOUBLE-DECKED SR 836



SR 836 ENHANCEMENTS

This project is a continuation of GMX's work program to modernize the SR 836 corridor. The enhancements on SR 836 are from NW 17 Avenue to the Midtown Interchange. These enhancements include double-decking SR 836, beginning just east of the toll gantry at NW 17 Avenue, rising over the center of SR 836, and touching down at I-395, east of the I-95 interchange. The double-decked section will provide drivers with a direct connection to the MacArthur Causeway that is free of local entry and exit traffic. The existing SR 836 roadway and bridges will serve as a collector distributor system that allows drivers to enter and exit from the existing local roads and I-95. This collector distributor system will reduce the existing weaving movements resulting in enhanced safety and better traffic operations on SR 836. In addition, the existing eastbound SR 836 ramp to northbound I-95 will be widened to include an additional lane reducing the congestion that drivers currently experience.

I-95 CONCRETE PAVEMENT RECONSTRUCTION

These enhancements are from NW 8 Street to NW 29 Street and include the total replacement of the concrete pavement for both the northbound and southbound travel lanes.

An auxiliary lane will be added along northbound I-95 from north of NW 17 Street to NW 29 Street to receive the additional traffic from the eastbound SR 836 ramp to northbound I-95 and enhance the flow of traffic through the Midtown Interchange.

The project also includes the construction of a new connector ramp from southbound I-95 to westbound SR 836.

This new connector ramp will enhance the flow of traffic and reduce weaving movements. This portion of the project will also enhance safety.

I-395 RECONSTRUCTION ENHANCEMENTS

Enhancements along I-395 are from the SR 836/I-95/I-395 (Midtown) Interchange to the MacArthur Causeway, approximately 1.4 miles long. The project will completely reconstruct the existing facility and create a signature bridge that will span 1,025 feet over NE 2 Avenue and SR5/Biscayne Boulevard, redefining the Miami skyline with its six sweeping arches.

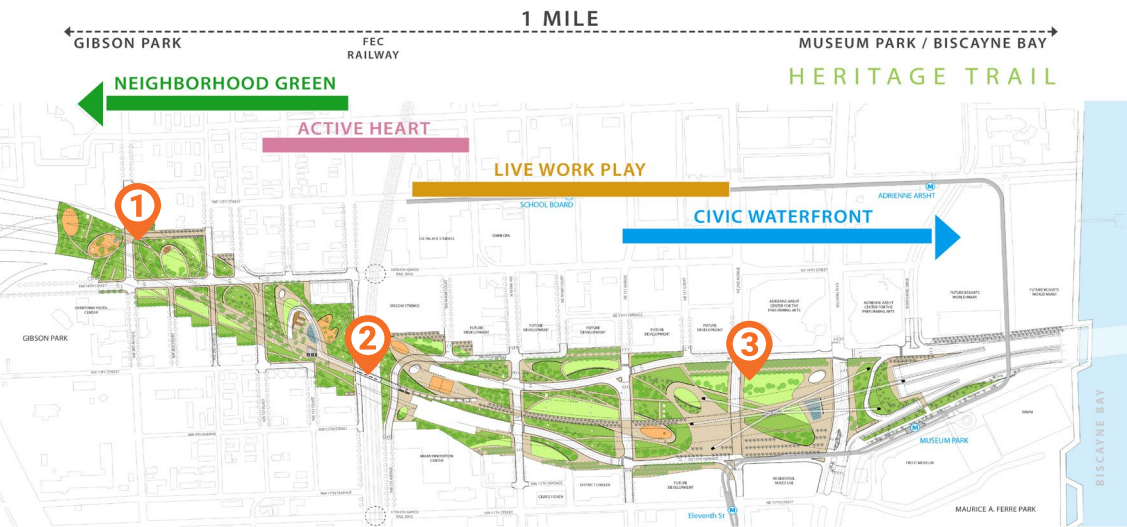
The project will create additional capacity on I-395 with a total of three through lanes in each direction and provide separate connector ramps for traffic to and from I-95.

The existing I-395 eastbound off-ramps at NE 2 Avenue will be moved west to North Miami Avenue, and the westbound on-ramps at NE 1 Avenue will be shifted to the west of North Miami Avenue. NW 2 Avenue will also be reconnected under I-395, providing residents greater access.



SIGNATURE BRIDGE

COMMUNITY ACTIVITY SPACES UNDER I-395



The centerpiece of this project is the signature bridge that changes the City's skyline and becomes an iconic symbol that our community can be proud of. The signature bridge and the adjoining structures will allow for the transformation of the area underneath to vibrant community spaces linked together by a contiguous trail for the enjoyment of Overtown residents, nearby communities and visitors.

The Department and City of Miami are partnering to refine the design of the community spaces underneath I-395.

PROJECT BENEFITS INCLUDE:

- Adding capacity to SR 836 from NW 17 Avenue to I-95 to enhance traffic flow
- The double-decked section of SR 836 will provide a direct connection to the MacArthur Causeway
- Adding an additional lane to the eastbound SR 836 ramp to northbound I-95, enhancing the flow of traffic and safety
- Adding an auxiliary lane along northbound I-95 from north of NW 17 Street to NW 29 Street to accommodate the additional traffic from the eastbound SR 836 ramp to northbound I-95
- New connector ramp from I-95 southbound to SR 836 westbound will enhance traffic flow and reduce weaving movements
- I-395 will provide three through lanes in each direction and provide separate connector ramps for traffic to and from I-95
- The existing I-395 on and off-ramps will be moved west to North Miami Avenue, resulting in improved traffic flow by allowing additional routes for traffic to travel north and south of I-395
- 30 acres of usable space will be created under the I-395 bridges including a continuous trail from NW 3 Avenue to Biscayne Boulevard
- A new pedestrian bridge over the FEC (Brightline) Railroad to allow for safer pedestrian crossing and connectivity