



State Road (SR) 953/LeJeune Road/NW 42 Avenue
From n of SR 932/NW 103 Street/E 49 Street to s of NW 135 Street
FIN: 447803-1-52-01

**We are currently experiencing
technical difficulties**

**Thank you for your patience. We will
resume shortly**



State Road (SR) 953/LeJeune Road/NW 42 Avenue
From n of SR 932/NW 103 Street/E 49 Street to s of NW 135 Street
FIN: 447803-1-52-01

WELCOME!

**State Road (SR) 953/LeJeune Road/NW 42 Avenue
From n of SR 932/NW 103 Street/E 49 Street
to s of NW 135 Street
Design Roadway Project**

The meeting will begin soon



State Road (SR) 953/LeJeune Road/NW 42 Avenue
From n of SR 932/NW 103 Street/E 49 Street to s of NW 135 Street
FIN: 447803-1-52-01

Si usted necesita traducción durante la reunión por favor comuníquese conmigo. Usted puede levantar su mano o pedir ayuda a través del chat y un miembro de nuestro equipo lo asistirá.



State Road (SR) 953/LeJeune Road/NW 42 Avenue
From n of SR 932/NW 103 Street/E 49 Street to s of NW 135 Street
FIN: 447803-1-52-01

- If you experience technical difficulties, contact **Rodolfo Roman** at **305-470-5477** or e-mail **Rodolfo.Roman@dot.state.fl.us** so he can assist you.



State Road (SR) 953/LeJeune Road/NW 42 Avenue
From n of SR 932/NW 103 Street/E 49 Street to s of NW 135 Street
FIN: 447803-1-52-01

**We would like to recognize any federal, state,
county, or city officials who
may be present.**

**Please select the raise hand feature on
the control panel.**



State Road (SR) 953/LeJeune Road/NW 42 Avenue
From n of SR 932/NW 103 Street/E 49 Street to s of NW 135 Street
FIN: 447803-1-52-01

Meeting Agenda

- Non-Discrimination Policy
- Rules of Engagement
- Meet the Project Team
- Project Information
- Project Schedule and Cost
- Project Location
- Project Scope of Work
- What to Expect During Construction
- Open Discussion



State Road (SR) 953/LeJeune Road/NW 42 Avenue
From n of SR 932/NW 103 Street/E 49 Street to s of NW 135 Street
FIN: 447803-1-52-01

Non-Discrimination Policy

The Florida Department of Transportation is required to comply with various non-discrimination laws and regulations including Title VI of the Civil Rights Act of 1964.

Public participation at this meeting is solicited without regard to race, color, national origin, age, sex, religion, disability or family status. Persons wishing to express their concerns about Title VI may do so by contacting:

District Six Title VI Interim Coordinator

Tish Burgher at 305-470-5277 or in writing: FDOT, 1000 NW 111 Avenue,
Miami, FL 33172, email: Tish.Burgher@dot.state.fl.us

State Title VI Coordinator

Stefan Kulakowski at 850-414-4702 or in writing: Equal Opportunity Office
605 Suwannee Street, MS 65,
Tallahassee, FL 32399 email: Stefan.Kulakowski@dot.state.fl.us



State Road (SR) 953/LeJeune Road/NW 42 Avenue
From n of SR 932/NW 103 Street/E 49 Street to s of NW 135 Street
FIN: 447803-1-52-01

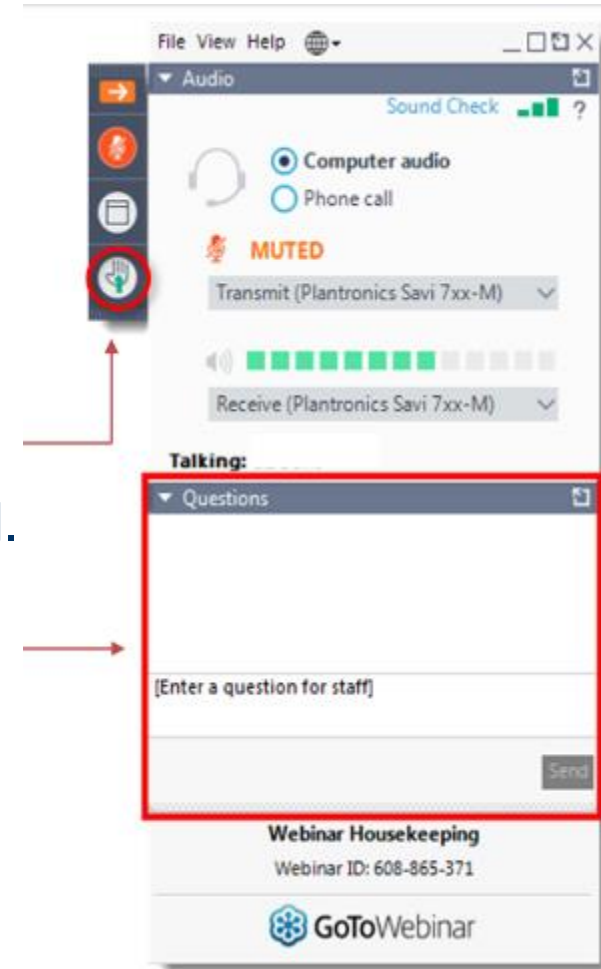
Rules of Engagement

- This meeting is being recorded
- The meeting will begin with a presentation followed by comments and questions
- If you are calling in via phone, you will not be able to provide comments during the meeting. To provide comments, call 305-470-5477 or e-mail Rodolfo.Roman@dot.state.fl.us.com
- Tonight's presentation is available at:
www.southflroads.com/design-projects/north-miami-dade/sr-953lejeune-rdnw-42-avee-8-ave-from-sr-932nw-103-ste-49-st-to-nw-135-st.html



Rules of Engagement

- During the Open Discussion, in-person attendees will be called on first. A staff member will advise when to state your question.
- Virtual attendees **will remain muted** except for the **Open Discussion** session. To participate:
 - Use the **“Raise Hand”** button on your **GoToWebinar** panel and you will be unmuted.
 - Submit comments or questions via the **“Question”** box.
- All attendees will have **three minutes** to participate.





State Road (SR) 953/LeJeune Road/NW 42 Avenue
From n of SR 932/NW 103 Street/E 49 Street to s of NW 135 Street
FIN: 447803-1-52-01

**Scan the QR code to
download the presentation**





State Road (SR) 953/LeJeune Road/NW 42 Avenue
From n of SR 932/NW 103 Street/E 49 Street to s of NW 135 Street
FIN: 447803-1-52-01

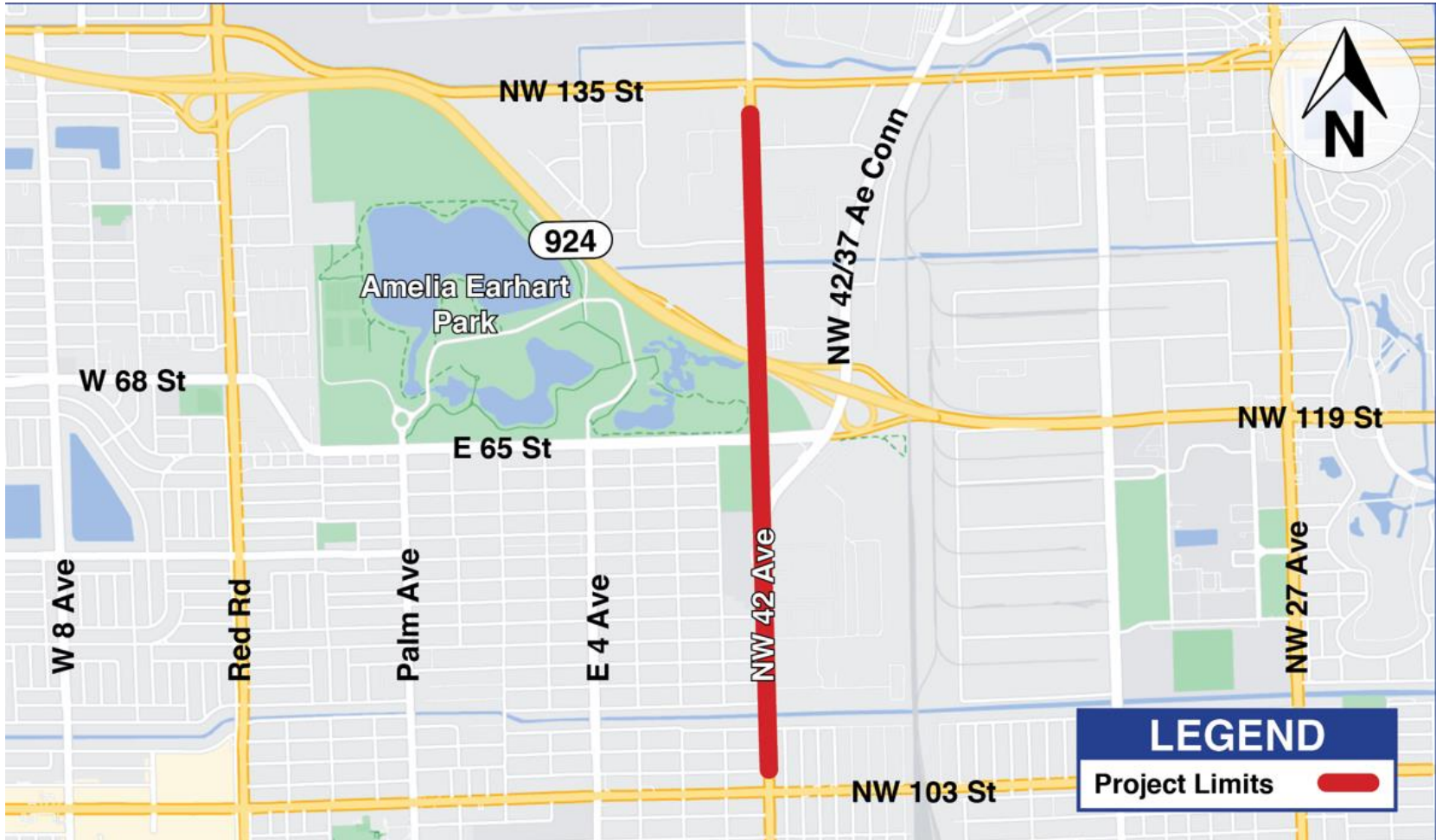
Project Team

- FDOT Project Manager: Victoria Zulueta, P.E.
- Consultant Project Engineer: Maikel Gonzalez, P.E.
- Community Outreach Specialist: Rodolfo Roman



State Road (SR) 953/LeJeune Road/NW 42 Avenue
From n of SR 932/NW 103 Street/E 49 Street to s of NW 135 Street
FIN: 447803-1-52-01

SR 953/LeJeune Rd/NW 42 Ave from n of SR 932/NW 103 St/E 49 St to s of NW 135 St





State Road (SR) 953/LeJeune Road/NW 42 Avenue
From n of SR 932/NW 103 Street/E 49 Street to s of NW 135 Street
FIN: 447803-1-52-01

Project Benefits



Communities

- FDOT is committed to working with the community to address concerns impacting the area.

Safety

- This project will enhance safety for all road users (motorists and pedestrians) by modifying median access to prevent accidents, upgrading pedestrian ramps, and upgrading pedestrian signalization

Resiliency

- Stormwater drainage system improvements will help alleviate ponding



State Road (SR) 953/LeJeune Road/NW 42 Avenue
From n of SR 932/NW 103 Street/E 49 Street to s of NW 135 Street
FIN: 447803-1-52-01

Project Scope

- Repaving and restriping the roadway
- Updating curb ramps
- Closing the full median openings at the following intersections:
 - E 51 Street
 - E 53 Street
 - E 54 Street
- Extending turn lanes and widening at various intersections
- Removing abandoned driveways
- Adding a new sidewalk and curb ramps at NW 37 Avenue
- Repairing stormwater drainage
- Relocating the crosswalk at the NW 37 Avenue to make it more visible to oncoming traffic
- Adding a northbound left turn green arrow to the traffic light at E 52 Street and E 55 Street



State Road (SR) 953/LeJeune Road/NW 42 Avenue
From n of SR 932/NW 103 Street/E 49 Street to s of NW 135 Street
FIN: 447803-1-52-01

Project Scope

- Widening the sidewalk at the NW corner of E 52 Street
- Adding a new crosswalk across LeJeune Road at the NW 37 Avenue Connector intersection
- Upgrading pedestrian and vehicular signage
- Replacing the bridge expansion joints and guardrail
- Removing or relocating landscape due to the median and side street widening
- Upgrading street lighting at intersections



State Road (SR) 953/LeJeune Road/NW 42 Avenue
From n of SR 932/NW 103 Street/E 49 Street to s of NW 135 Street
FIN: 447803-1-52-01

CRASHES AT THE MEDIAN 2016-2022

Crashes from E 49 Street
to E 56 Street:

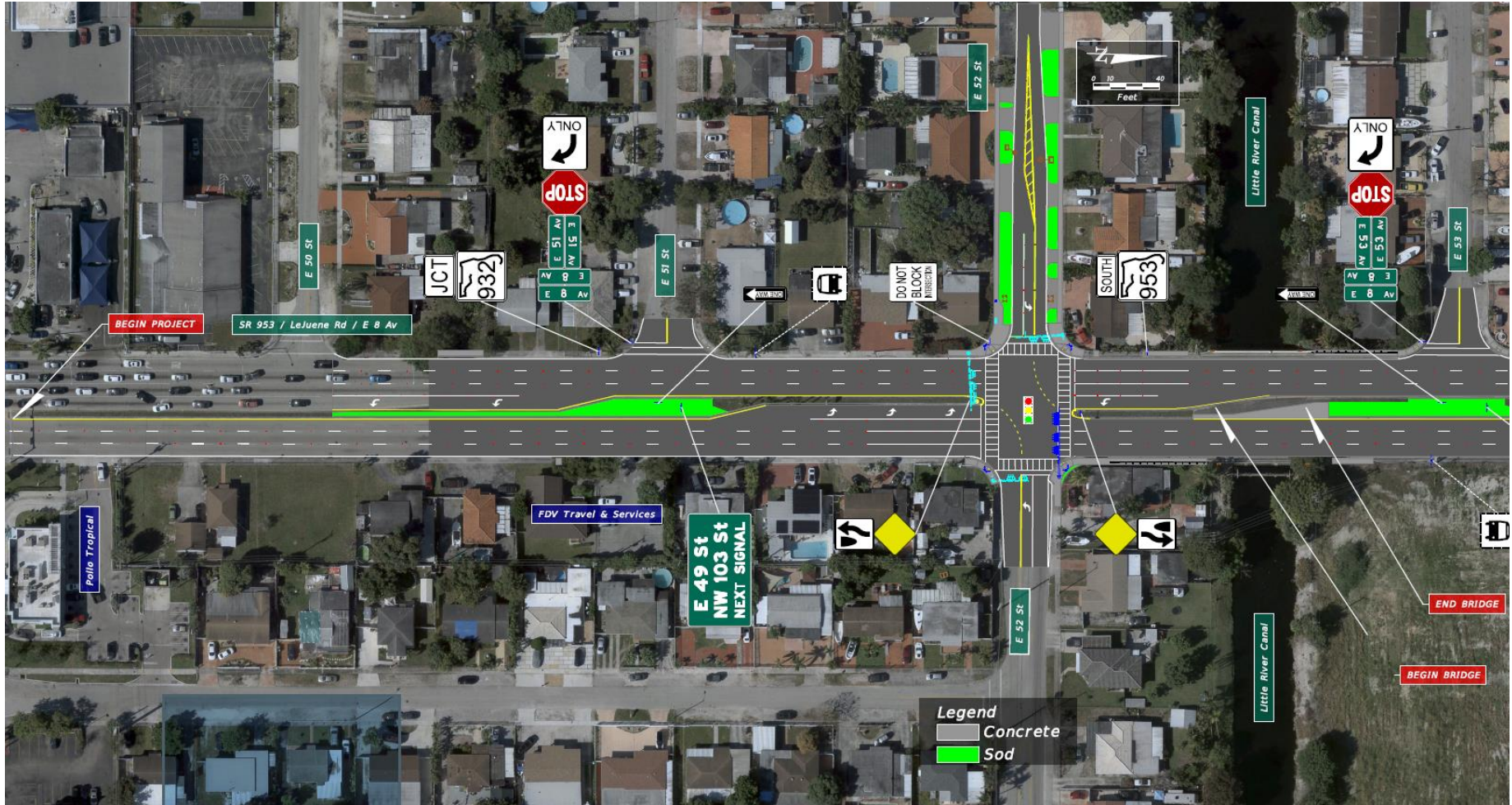
109 Total left-turn crashes

81 Total angle crashes

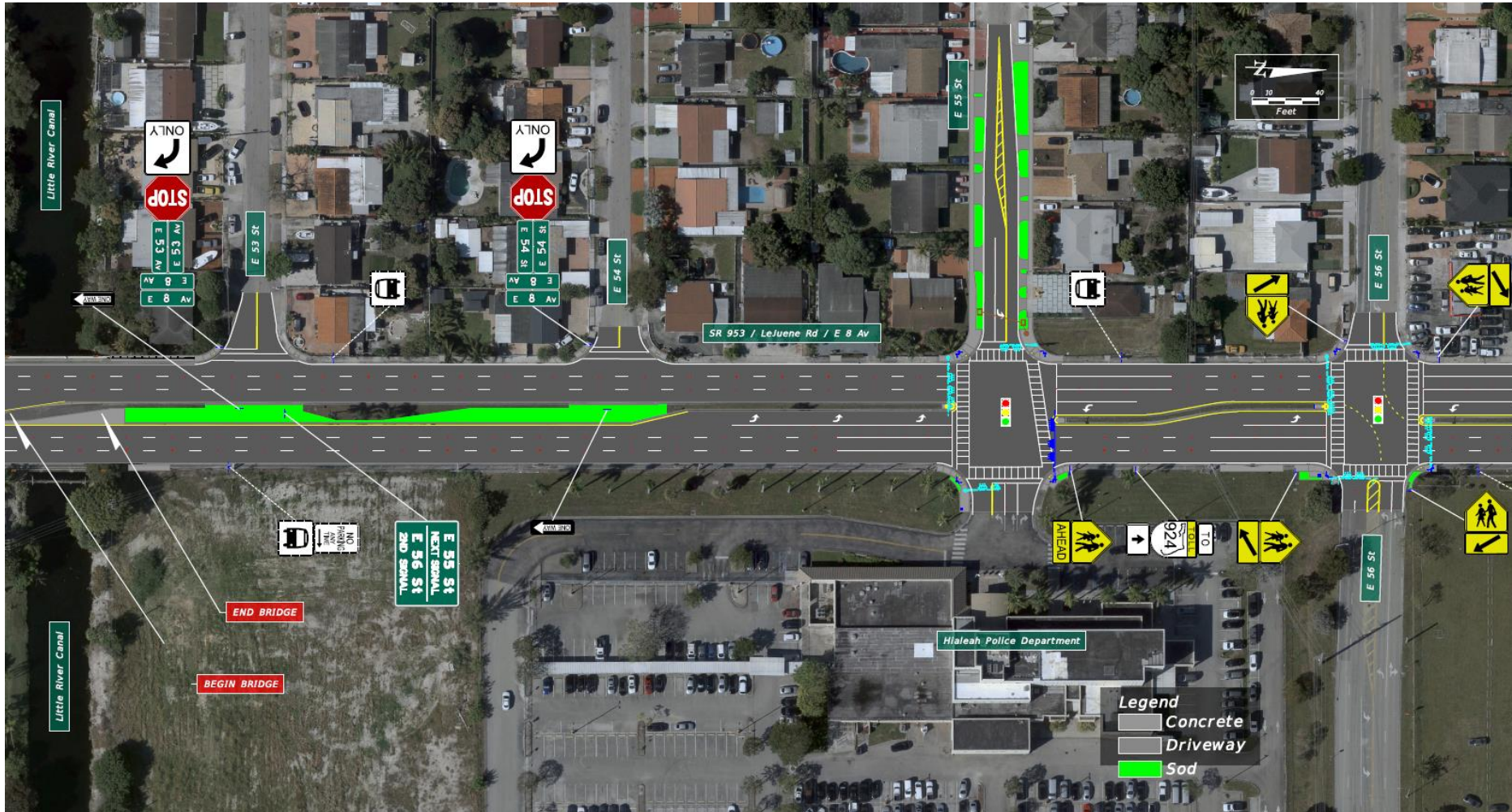


State Road (SR) 953/LeJeune Road/NW 42 Avenue
From n of SR 932/NW 103 Street/E 49 Street to s of NW 135 Street
FIN: 447803-1-52-01

SR 953 from E 49 Street to Little River Canal



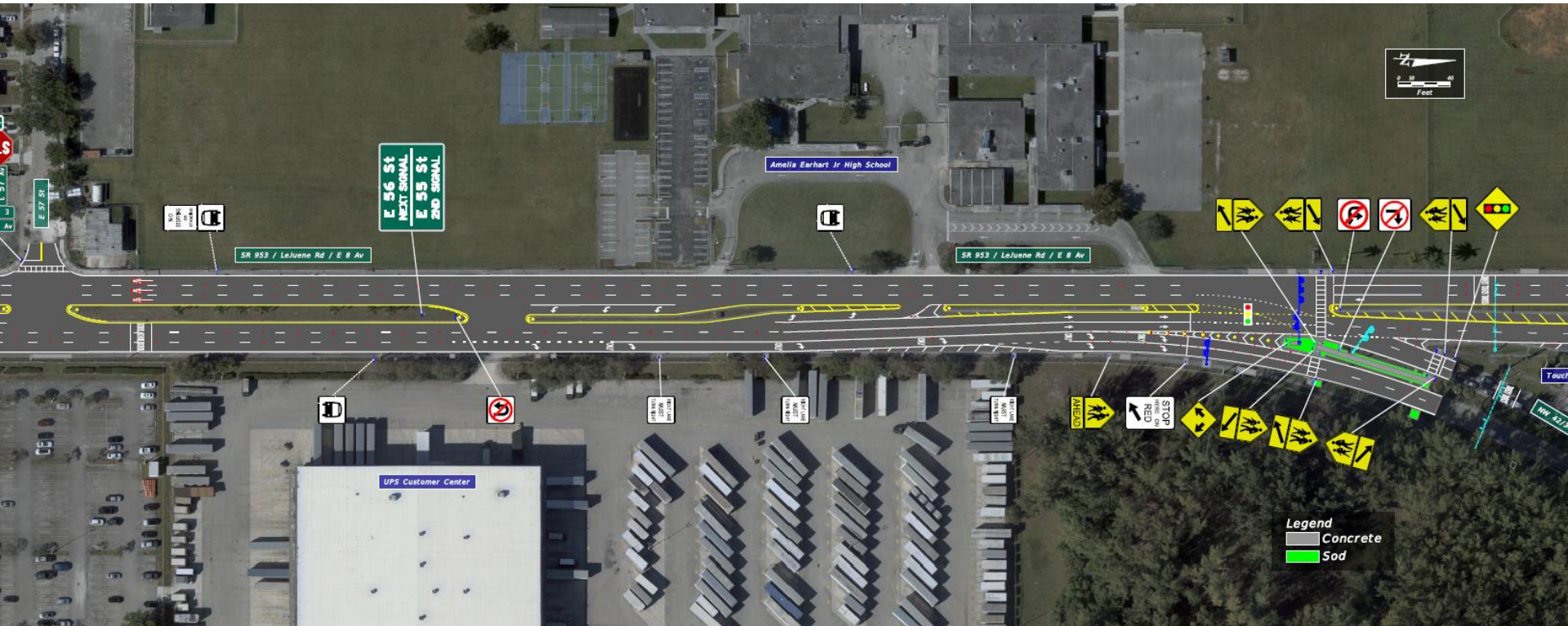
SR 953 from Little River Canal to E 56 Street





State Road (SR) 953/LeJeune Road/NW 42 Avenue
From n of SR 932/NW 103 Street/E 49 Street to s of NW 135 Street
FIN: 447803-1-52-01

SR 953 and E 57 Street





State Road (SR) 953/LeJeune Road/NW 42 Avenue
From n of SR 932/NW 103 Street/E 49 Street to s of NW 135 Street
FIN: 447803-1-52-01

SR 953 and NW 127 Street





State Road (SR) 953/LeJeune Road/NW 42 Avenue
From n of SR 932/NW 103 Street/E 49 Street to s of NW 135 Street
FIN: 447803-1-52-01

SR 953 and NW 128 Street to NW 135 Street





State Road (SR) 953/LeJeune Road/NW 42 Avenue
From n of SR 932/NW 103 Street/E 49 Street to s of NW 135 Street
FIN: 447803-1-52-01

Project Schedule and Cost

Milestone	Date
Production	April 2025
Letting Date	September 2025
Construction Estimated Start date	Spring 2026
Construction Estimated Duration	300 days
Construction Estimated End date	Spring 2027
Total Estimated Construction Cost	\$6.6 million



- The project is currently in the design phase
- Work with municipalities to review plans
- Receive feedback from the public



State Road (SR) 953/LeJeune Road/NW 42 Avenue
From n of SR 932/NW 103 Street/E 49 Street to s of NW 135 Street
FIN: 447803-1-52-01

What to Expect During Construction

Construction activities will be completed in phases to minimize impacts to the public.

Maintenance of Traffic (MOT):



- Lane closures shall occur only during non-peak hours on non-event days, nights and weekends
- At least one travel lane will remain open on LeJeune Road northbound and southbound during construction
- Pedestrian detours will be clearly marked
- Temporary vehicular detours for work at E 52 Street and at E 55 Street

Non-peak hours are:

- 8 p.m. to 6 a.m. weekdays and weekends



State Road (SR) 953/LeJeune Road/NW 42 Avenue
From n of SR 932/NW 103 Street/E 49 Street to s of NW 135 Street
FIN: 447803-1-52-01

What to Expect During Construction



Posted Speed:

- Existing 40 miles per hour speed limit will be maintained during construction



Dust:

- The contractor will be required to water and sweep in order to minimize construction-related dust



State Road (SR) 953/LeJeune Road/NW 42 Avenue
From n of SR 932/NW 103 Street/E 49 Street to s of NW 135 Street
FIN: 447803-1-52-01

What to Expect During Construction



Noise:

- Some noise should be expected during allowable construction time



Access:

- Access to businesses and residences will be maintained at all times



State Road (SR) 953/LeJeune Road/NW 42 Avenue
From n of SR 932/NW 103 Street/E 49 Street to s of NW 135 Street
FIN: 447803-1-52-01

Open Discussion

- In-person attendees please form a line
- Virtual attendees:
 - Submit your comments in the “Questions” box
 - If you would like to speak, please use the “Raise Hand” button on your GoToWebinar panel and you will be unmuted
- All participants will have three minutes to provide comments/questions. Please clearly state your name and address
- Staff will be available to answer questions in the order they are received and as time permits. If your question is not responded to during the event, a response will be provided in writing afterwards



State Road (SR) 953/LeJeune Road/NW 42 Avenue
From n of SR 932/NW 103 Street/E 49 Street to s of NW 135 Street
FIN: 447803-1-52-01

CONTACT

**Community Outreach Specialist
Rodolfo Roman**



305-470-5477



Rodolfo.Roman@dot.state.fl.us



www.southflroads.com

Download tonight's presentation at:

www.southflroads.com/design-projects/north-miami-dade/-sr-953lejeune-rdsw-nw-42-ave-from-sw-8-st-to-nw-11-st-1.html

Please take our exit survey!



State Road (SR) 953/LeJeune Road/NW 42 Avenue
From n of SR 932/NW 103 Street/E 49 Street to s of NW 135 Street
FIN: 447803-1-52-01

Scan QR code to download the presentation





State Road (SR) 953/LeJeune Road/NW 42 Avenue
From n of SR 932/NW 103 Street/E 49 Street to s of NW 135 Street
FIN: 447803-1-52-01

