



State Road (SR) 953/LeJeune Road/SW-NW 42 Avenue
From SW 8 Street to NW 11 Street
FIN: 447809-1-52-01

**We are currently experiencing
technical difficulties**

**Thank you for your patience. We will
resume shortly**



State Road (SR) 953/LeJeune Road/SW-NW 42 Avenue
From SW 8 Street to NW 11 Street
FIN: 447809-1-52-01

WELCOME!

**State Road (SR) 953/LeJeune Road/SW-NW 42 Avenue
From SW 8 Street to NW 11 Street
Design Roadway Project**

The meeting will begin soon



State Road (SR) 953/LeJeune Road/SW-NW 42 Avenue
From SW 8 Street to NW 11 Street
FIN: 447809-1-52-01

Si usted necesita traducción durante la reunión por favor comuníquese conmigo. Usted puede levantar su mano o pedir ayuda a través del chat y un miembro de nuestro equipo lo asistirá.



State Road (SR) 953/LeJeune Road/SW-NW 42 Avenue
From SW 8 Street to NW 11 Street
FIN: 447809-1-52-01

- If you experience technical difficulties, contact **Rodolfo Roman** at **305-470-5477** or e-mail **Rodolfo.Roman@dot.state.fl.us** so he can assist you.



State Road (SR) 953/LeJeune Road/SW-NW 42 Avenue
From SW 8 Street to NW 11 Street
FIN: 447809-1-52-01

**We would like to recognize any federal, state,
county, or city officials who
may be present.**

**Please select the raise hand feature on
the control panel.**



State Road (SR) 953/LeJeune Road/SW-NW 42 Avenue
From SW 8 Street to NW 11 Street
FIN: 447809-1-52-01

Meeting Agenda

- Non-Discrimination Policy
- Rules of Engagement
- Meet the Project Team
- Project Information
- Project Schedule and Cost
- Project Location
- Project Scope of Work
- What to Expect During Construction
- Open Discussion



State Road (SR) 953/LeJeune Road/SW-NW 42 Avenue
From SW 8 Street to NW 11 Street
FIN: 447809-1-52-01

Non-Discrimination Policy

The Florida Department of Transportation is required to comply with various non-discrimination laws and regulations including Title VI of the Civil Rights Act of 1964.

Public participation at this meeting is solicited without regard to race, color, national origin, age, sex, religion, disability or family status. Persons wishing to express their concerns about Title VI may do so by contacting:

District Six Title VI Coordinator

Tish Burgher at 305-470-5277 or in writing: FDOT, 1000 NW 111 Avenue,
Miami, FL 33172, email: Tish.Burgher@dot.state.fl.us

State Title VI Coordinator

Stefan Kulakowski at 850-414-4702 or in writing: Equal Opportunity Office
605 Suwannee Street, MS 65,
Tallahassee, FL 32399 email: Stefan.Kulakowski@dot.state.fl.us



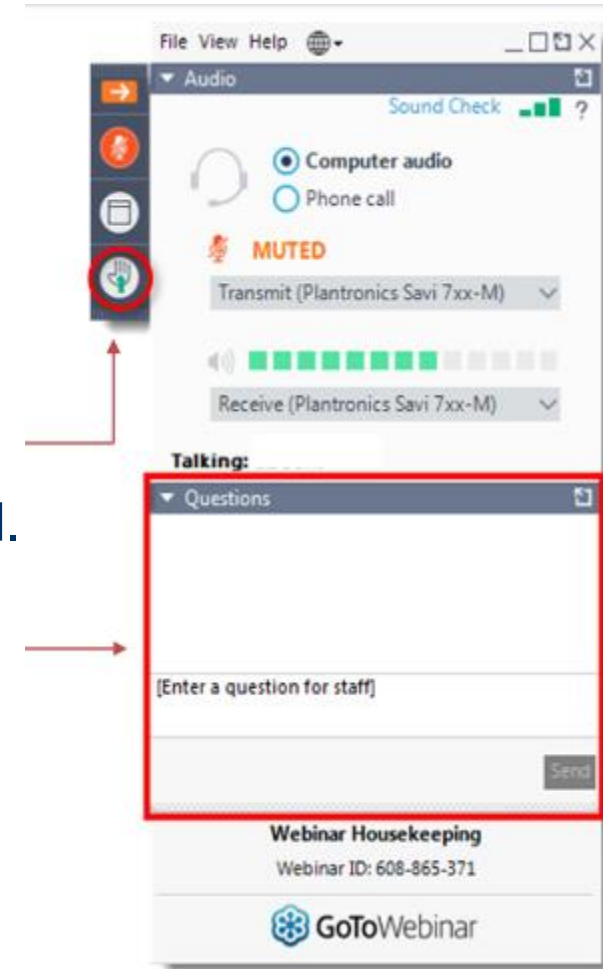
State Road (SR) 953/LeJeune Road/SW-NW 42 Avenue
From SW 8 Street to NW 11 Street
FIN: 447809-1-52-01

Rules of Engagement

- This meeting is being recorded
- The meeting will begin with a presentation followed by comments and questions
- If you are calling in via phone, you will not be able to provide comments during the meeting. To provide comments, call 305-470-5477 or e-mail Rodolfo.Roman@dot.state.fl.us.com
- Tonight's presentation is available at:
www.southflroads.com/design-projects/north-miami-dade/-sr-953lejeune-rdsw-nw-42-ave-from-sw-8-st-to-nw-11-st-1.html

Rules of Engagement

- During the Open Discussion, in-person attendees will be called on first. A staff member will advise when to state your question.
- Virtual attendees **will remain muted** except for the **Open Discussion** session. To participate:
 - Use the **“Raise Hand”** button on your **GoToWebinar** panel and you will be unmuted.
 - Submit comments or questions via the **“Question”** box.
- All attendees will have **three minutes** to participate.





State Road (SR) 953/LeJeune Road/SW-NW 42 Avenue
From SW 8 Street to NW 11 Street
FIN: 447809-1-52-01

**Scan the QR code to
download the presentation**





State Road (SR) 953/LeJeune Road/SW-NW 42 Avenue
From SW 8 Street to NW 11 Street
FIN: 447809-1-52-01

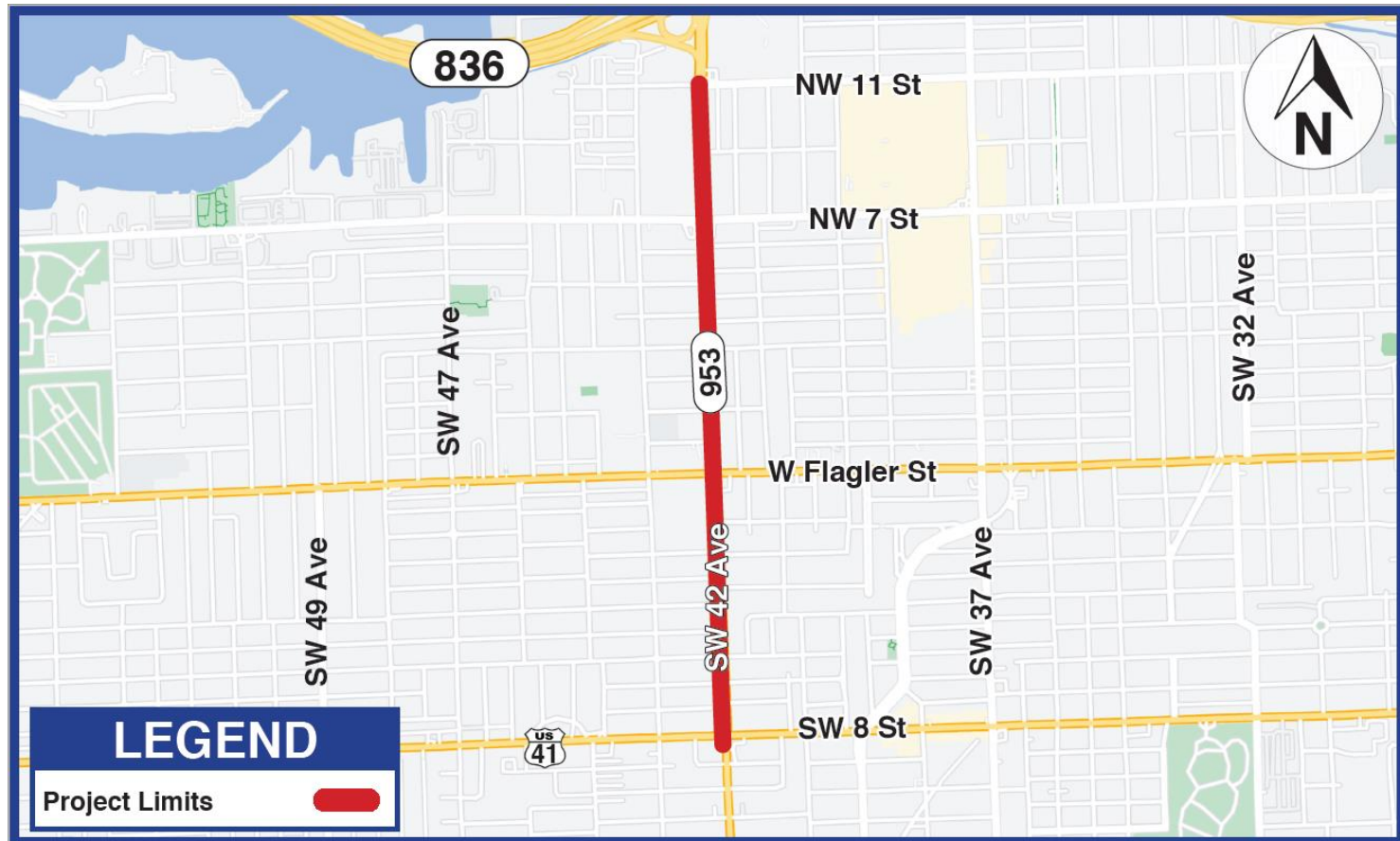
Project Team

- FDOT Project Manager: Jose Barrera, P.E.
- Project Manager: Alejandro Jaureguy, P.E.
- Consultant Project Engineer: Ramon Tesone, P.E.
- Community Outreach Specialist: Rodolfo Roman



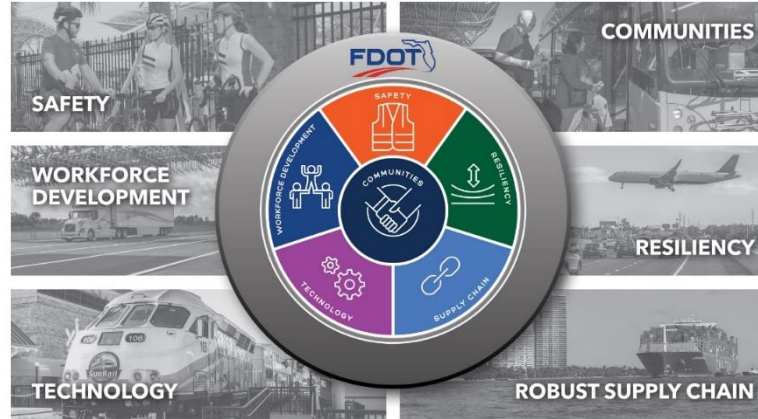
State Road (SR) 953/LeJeune Road/SW-NW 42 Avenue
From SW 8 Street to NW 11 Street
FIN: 447809-1-52-01

SR 953/LeJeune Rd/SW-NW 42 Ave from SW 8 St to NW 11 St





Project Benefits



Communities

- FDOT is committed to developing, implementing and maintaining the road that benefits this community.

Safety

- This project will enhance safety for all road users by modifying median access to prevent accidents, upgrading pedestrian ramps, improving pavement markings and upgrading pedestrian signals. Additionally, posted speed will be reduced to 35 miles per hour (MPH).

Resiliency

- Improving the stormwater drainage system to alleviate ponding



State Road (SR) 953/LeJeune Road/SW-NW 42 Avenue
From SW 8 Street to NW 11 Street
FIN: 447809-1-52-01

Project Scope

- Providing southbound left-turn and U-turn movement at SW 5 Terrace
- Closing median openings at SW 4 Street and SW 2 Terrace
- Adding a northbound directional median opening at SW 3 Street
- Closing two abandoned driveways at NW 4 Street
- Repaving and restriping the roadway
- Improving stormwater drainage system
- Replacing traffic signal at the NE corner of Flagler Street
- Upgrading signs and pavement markings
- Replacing all pedestrian push buttons
- Enhancing traffic signals
- Updating lighting
- Relocating palm trees



State Road (SR) 953/LeJeune Road/SW-NW 42 Avenue
From SW 8 Street to NW 11 Street
FIN: 447809-1-52-01

Project Schedule and Cost

Milestone	Date
Production	June 2024
Letting Date	December 2024
Construction Estimated Start date	Summer 2025
Construction Estimated Duration	280 days
Construction Estimated End date	Spring 2026
Total Estimated Construction Cost	\$3.5 million



- The project is currently in the design phase
- Work with municipalities to review plans
- Receive feedback from the public



State Road (SR) 953/LeJeune Road/SW-NW 42 Avenue
From SW 8 Street to NW 11 Street
FIN: 447809-1-52-01

CRASHES AT THE MEDIAN

2016-2018

SW 4 Street - SW 2 Street

2

Total
Angle crashes

38

Total
Left turn crashes

SW 6 Street - SW 5 Street

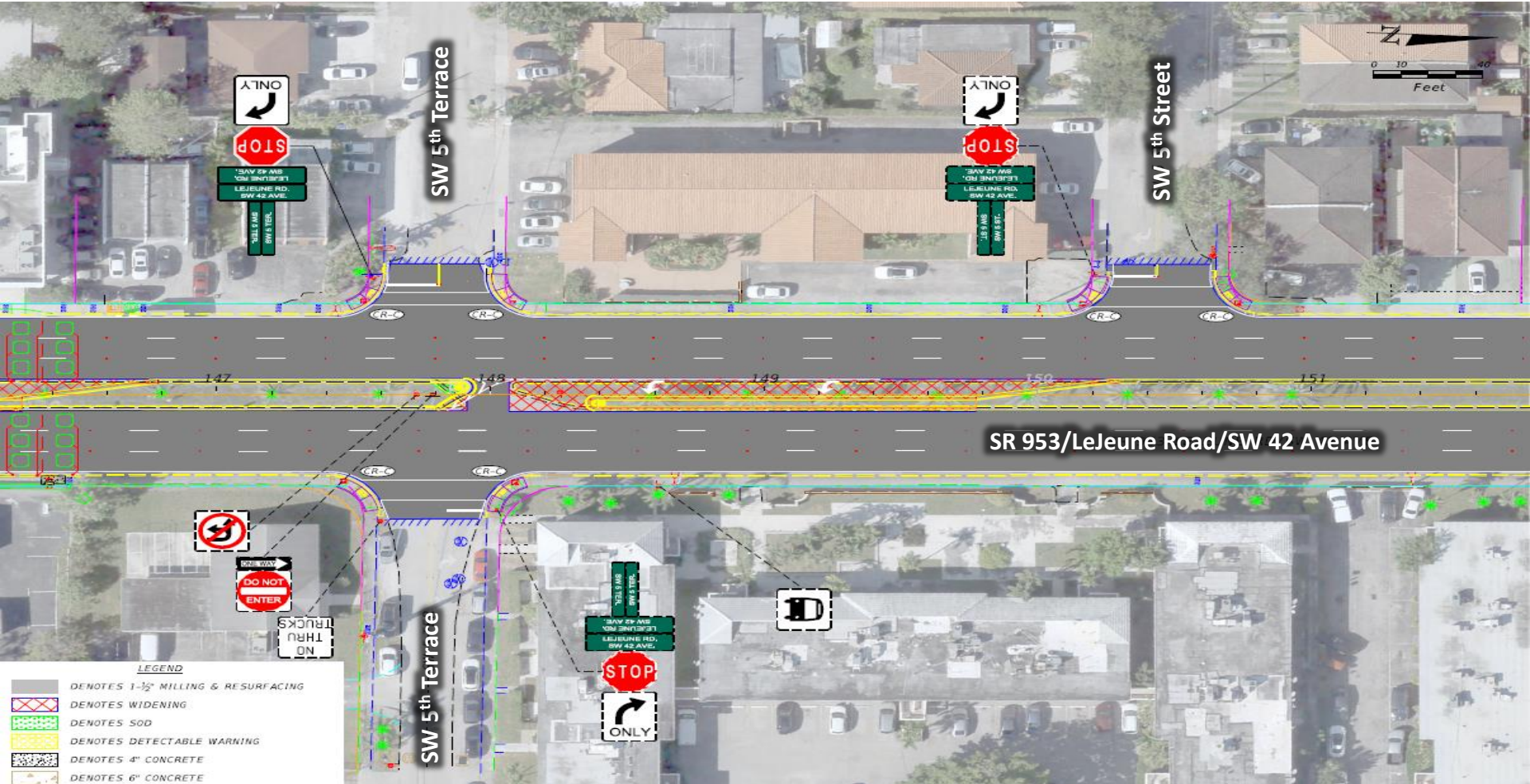
Total
Angle crashes

14

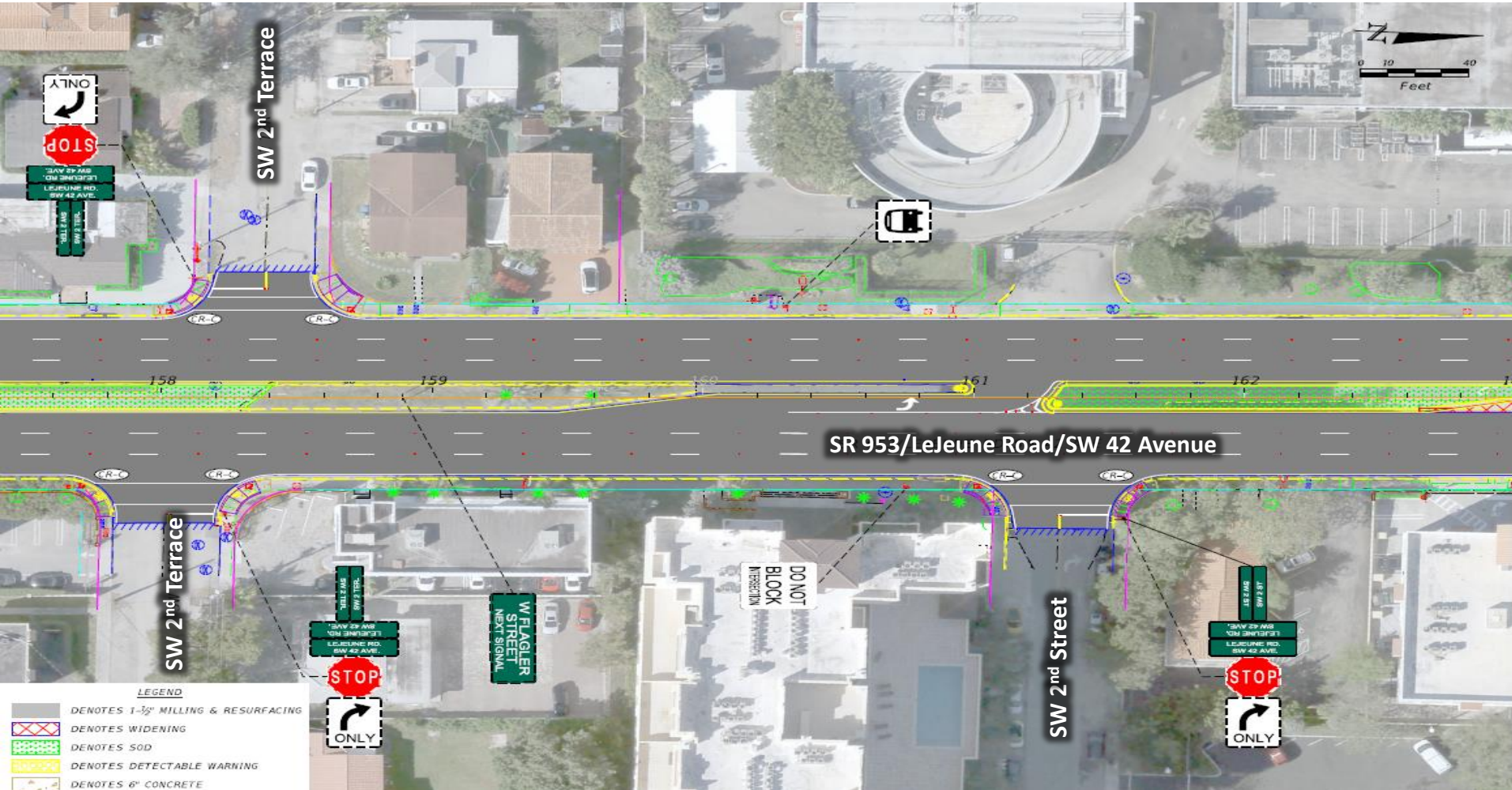
Total
Left turn crashes

1

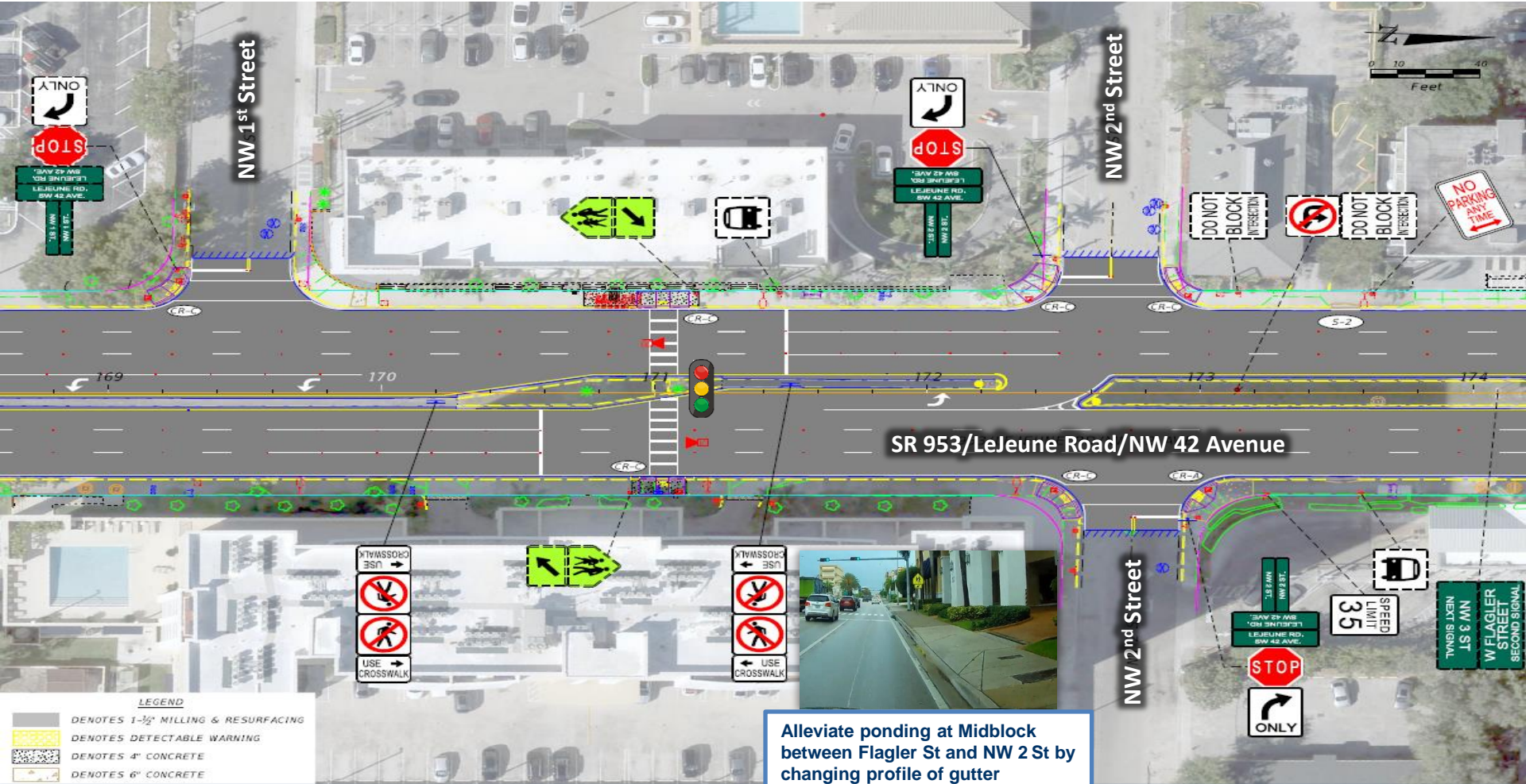
LeJeune Rd from SW 5 Terrace to SW 5 Street



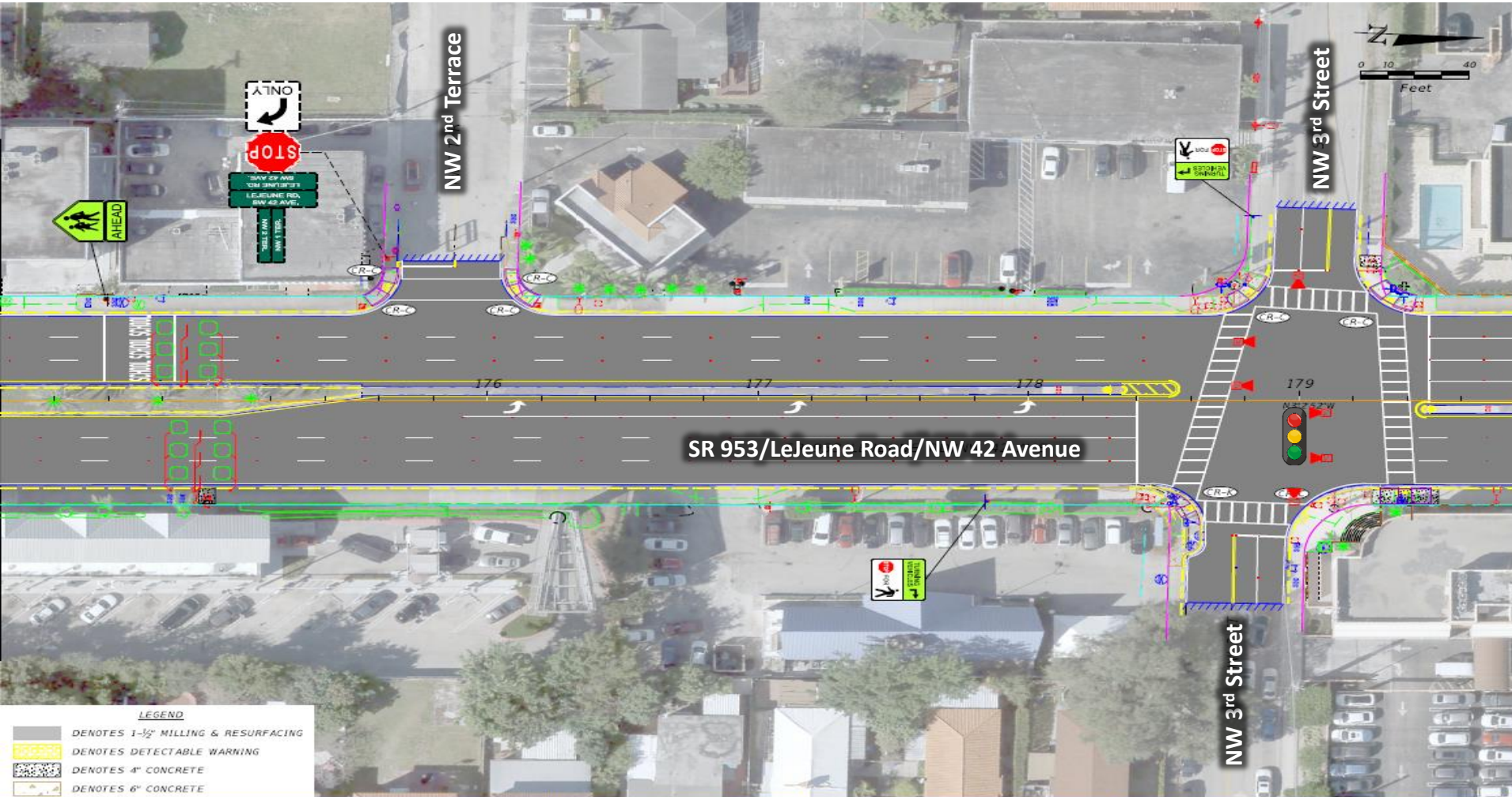
LeJeune Rd from SW 2 Terrace to SW 2 Street



LeJeune Rd from NW 1 Street to NW 2 Street



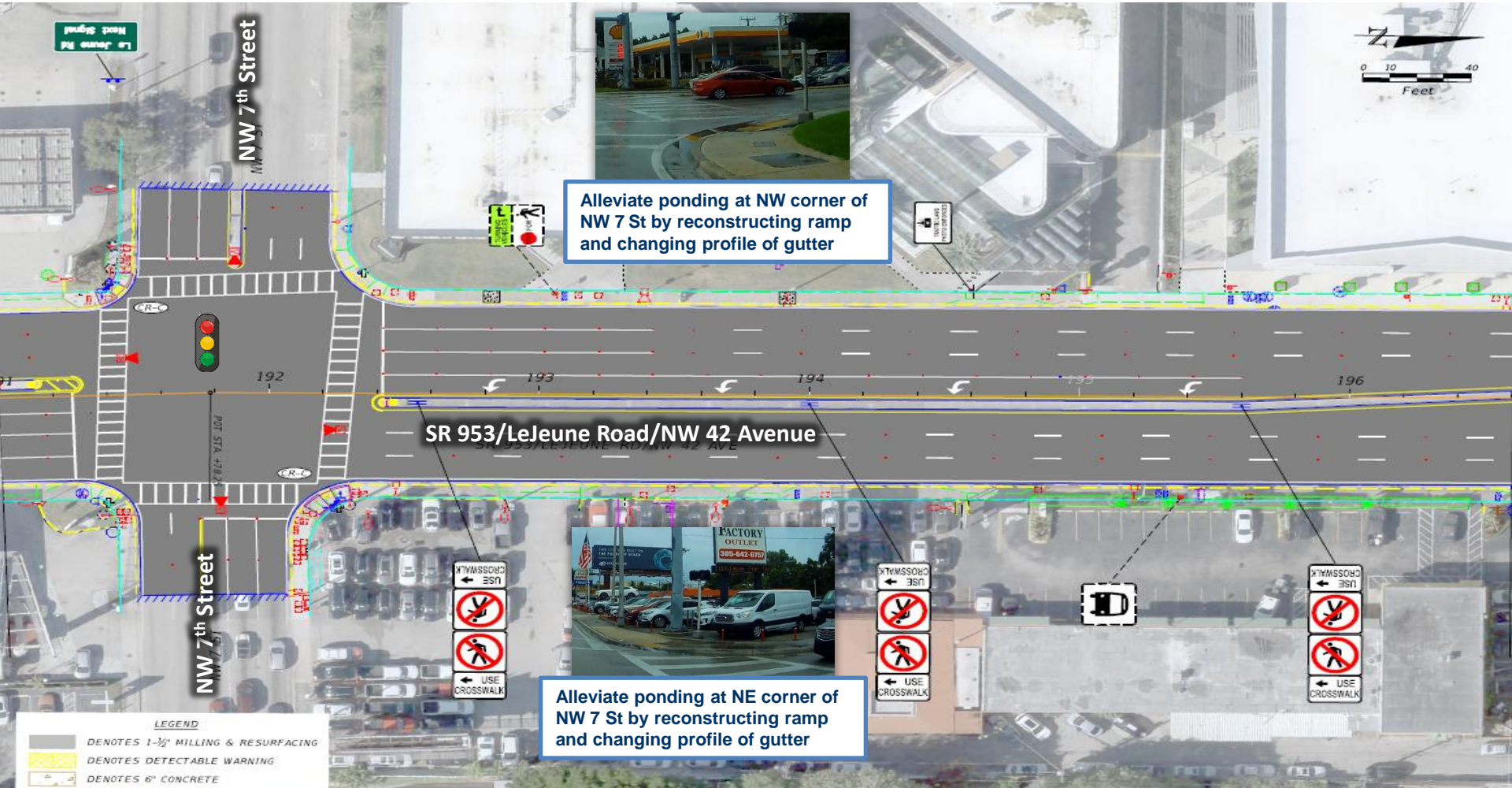
LeJeune Rd from NW 2 Terrace to NW 3 Street



LeJeune Rd from NW 4 Street to NW 5 Street



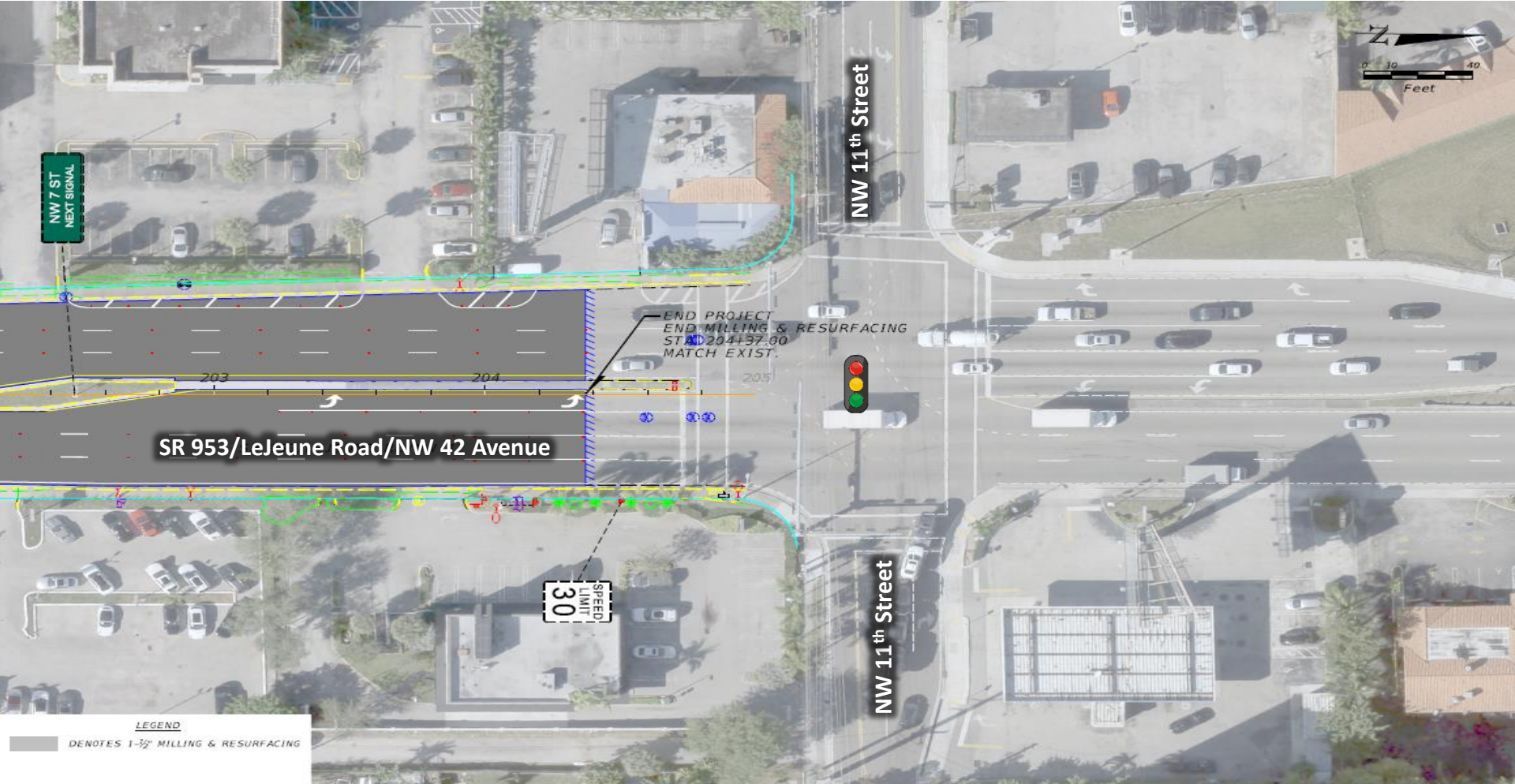
LeJeune Rd at NW 7 Street





State Road (SR) 953/LeJeune Road/SW-NW 42 Avenue
From SW 8 Street to NW 11 Street
FIN: 447809-1-52-01

LeJeune Rd at NW 11 Street





What to Expect During Construction

Construction activities will be completed in phases to minimize impacts to the public.

Maintenance of Traffic (MOT):



- Lane closures shall occur only during non-peak hours on non-event days, nights and weekends
- At least one travel lane will remain open along SR 953/LeJeune Road, in both directions during construction
- Pedestrian detours will be clearly marked

Non-peak hours are:

- 9 a.m. to 3:30 p.m. weekdays and weekends



State Road (SR) 953/LeJeune Road/SW-NW 42 Avenue
From SW 8 Street to NW 11 Street
FIN: 447809-1-52-01

What to Expect During Construction



Posted Speed:

- Posted speed limit during construction will be 35 miles per hour

Dust:

- The contractor will be required to water and sweep in order to minimize construction-related dust





What to Expect During Construction



Noise:

- Some noise should be expected during allowable construction time



Access:

- Access to businesses and residences will be maintained at all times



State Road (SR) 953/LeJeune Road/SW-NW 42 Avenue
From SW 8 Street to NW 11 Street
FIN: 447809-1-52-01

Open Discussion

- In-person attendees please form a line
- Virtual attendees:
 - Submit your comments in the “Questions” box
 - If you would like to speak, please use the “Raise Hand” button on your GoToWebinar panel and you will be unmuted
- All participants will have three minutes to provide comments/questions. Please clearly state your name and address
- Staff will be available to answer questions in the order they are received and as time permits. If your question is not responded to during the event, a response will be provided in writing afterwards



State Road (SR) 953/LeJeune Road/SW-NW 42 Avenue
From SW 8 Street to NW 11 Street
FIN: 447809-1-52-01

CONTACT

**Community Outreach Specialist
Rodolfo Roman**



305-470-5477



Rodolfo.Roman@dot.state.fl.us



www.southflroads.com

Download tonight's presentation at:

www.southflroads.com/design-projects/north-miami-dade/-sr-953lejeune-rdsw-nw-42-ave-from-sw-8-st-to-nw-11-st-1.html

Please take our exit survey!



State Road (SR) 953/LeJeune Road/SW-NW 42 Avenue
From SW 8 Street to NW 11 Street
FIN: 447809-1-52-01

**Scan QR code to
download the presentation**





State Road (SR) 953/LeJeune Road/SW-NW 42 Avenue
From SW 8 Street to NW 11 Street
FIN: 447809-1-52-01

