



Florida Department of
TRANSPORTATION

SR 916/NW 135 Street/NW 136 Street
From NW 30 Avenue to NW 27 Avenue
FIN: 447805-1-52-01

**We are currently experiencing
technical difficulties**

**Thank you for your patience. We will
resume shortly**



Florida Department of
TRANSPORTATION

SR 916/NW 135 Street/NW 136 Street
From NW 30 Avenue to NW 27 Avenue
FIN: 447805-1-52-01

WELCOME!

**State Road (SR) 916/NW 135 Street/NW 136 Street
from NW 30 Avenue to NW 27 Avenue
Roadway Project**

The meeting will begin soon



Florida Department of
TRANSPORTATION

SR 916/NW 135 Street/NW 136 Street
From NW 30 Avenue to NW 27 Avenue
FIN: 447805-1-52-01

Si usted necesita traducción durante la reunión por favor comuníquese conmigo. Usted puede levantar su mano o pedir ayuda a través del chat y un miembro de nuestro equipo lo asistirá.



Florida Department of
TRANSPORTATION

SR 916/NW 135 Street/NW 136 Street
From NW 30 Avenue to NW 27 Avenue
FIN: 447805-1-52-01

- If you experience technical difficulties, contact **Rodolfo Roman** at **786-519-7160** or e-mail **Rodolfo.Roman@dot.state.fl.us** so he can assist you.



Florida Department of
TRANSPORTATION

SR 916/NW 135 Street/NW 136 Street
From NW 30 Avenue to NW 27 Avenue
FIN: 447805-1-52-01

**We would like to recognize any federal, state,
county, or city officials who
may be present.**

**Please select the raise hand feature on
the control panel.**



Meeting Agenda

- Non-Discrimination Policy
- Rules of Engagement
- Meet the Project Team
- Project Information
- Project Schedule and Cost
- Project Location
- Project Scope of Work
- What to Expect During Construction
- Open Discussion



Non-Discrimination Policy

The Florida Department of Transportation is required to comply with various non-discrimination laws and regulations including Title VI of the Civil Rights Act of 1964.

Public participation at this meeting is solicited without regard to race, color, national origin, age, sex, religion, disability or family status. Persons wishing to express their concerns about Title VI may do so by contacting:

District Six Title VI Coordinator

Nicholas Danu, P.E. at 305-470-5219 or in writing: FDOT, 1000 NW 111 Avenue,
Miami, FL 33172, email: Nicholas.Danu@dot.state.fl.us

State Title VI Coordinator

Jacqueline Paramore at 850-414-4753 or in writing: Equal Opportunity Office
605 Suwannee Street, MS 65,
Tallahassee, FL 32399 email: Jacqueline.Paramore@dot.state.fl.us

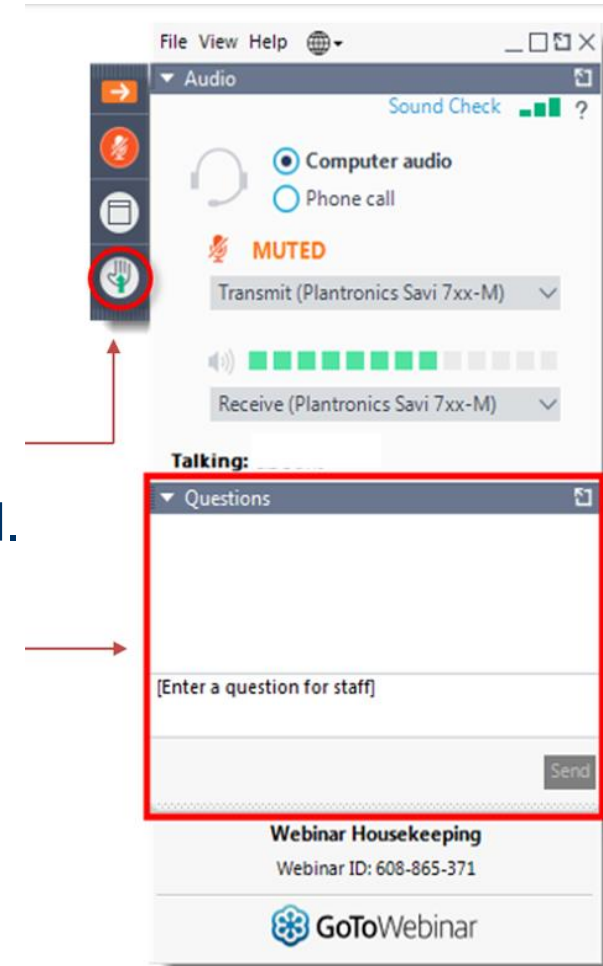


Rules of Engagement

- This meeting is being recorded
- The meeting will begin with a presentation followed by comments and questions
- If you are calling in via phone, you will not be able to provide comments during the meeting. To provide comments, call 786-519-7160 or e-mail Rodolfo.Roman@dot.state.fl.us.com
- Tonight's presentation is available at:
www.fdotmiamidade.com/design-projects/north-miami-dade/sr-916nw-136-stnw-135-st-from-nw-30-ave-to-nw-27-ave-1.html

Rules of Engagement

- During the Open Discussion, in-person attendees will be called on first. A staff member will advise when to state your question.
- Virtual attendees **will remain muted** except for the **Open Discussion** session. To participate:
 - Use the **“Raise Hand”** button on your **GoToWebinar** panel and you will be unmuted.
 - Submit comments or questions via the **“Question”** box.
- All attendees will have **three minutes** to participate.





Florida Department of
TRANSPORTATION

SR 916/NW 135 Street/NW 136 Street
From NW 30 Avenue to NW 27 Avenue
FIN: 447805-1-52-01

**Scan the QR code to
download the presentation**





Project Team

- FDOT Project Manager: Hector Di Donato, P.E.
- Consultant Project Engineer: Ricardo A. Castro, P.E. Roadway Design Solutions, Inc.
- Community Outreach Specialist: Rodolfo Roman



Project Information

Purpose and Need:

- The purpose of the project is to enhance general safety and extend the service life of the roadway.

Municipalities in the area: City of Opa-Locka and Miami-Dade County





Project Schedule and Cost

| Milestone | Date |
|-----------------------------------|---------------|
| Production | 05/02/2023 |
| Letting Date | 09/27/2023 |
| Construction Estimated Start date | Spring 2024 |
| Construction Estimated Duration | 200 days |
| Construction Estimated End date | Early 2025 |
| Total Estimated Construction Cost | \$1.5 million |

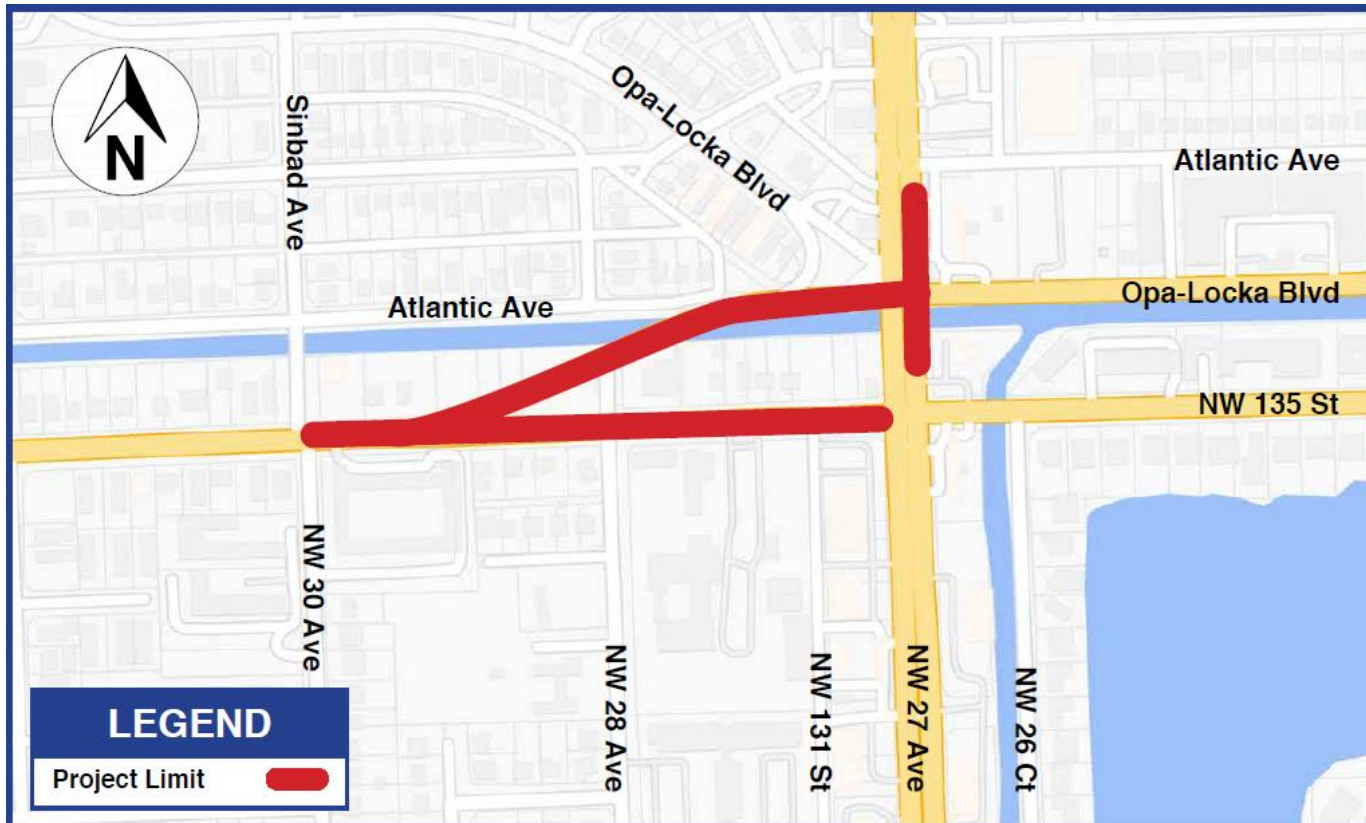


- The project is currently in the design phase
- Work with municipalities to review plans
- Receive feedback from the public



Project Location Map

SR 916/NW 135 Street/NW 136 Street from NW 30 Avenue to NW 27 Avenue



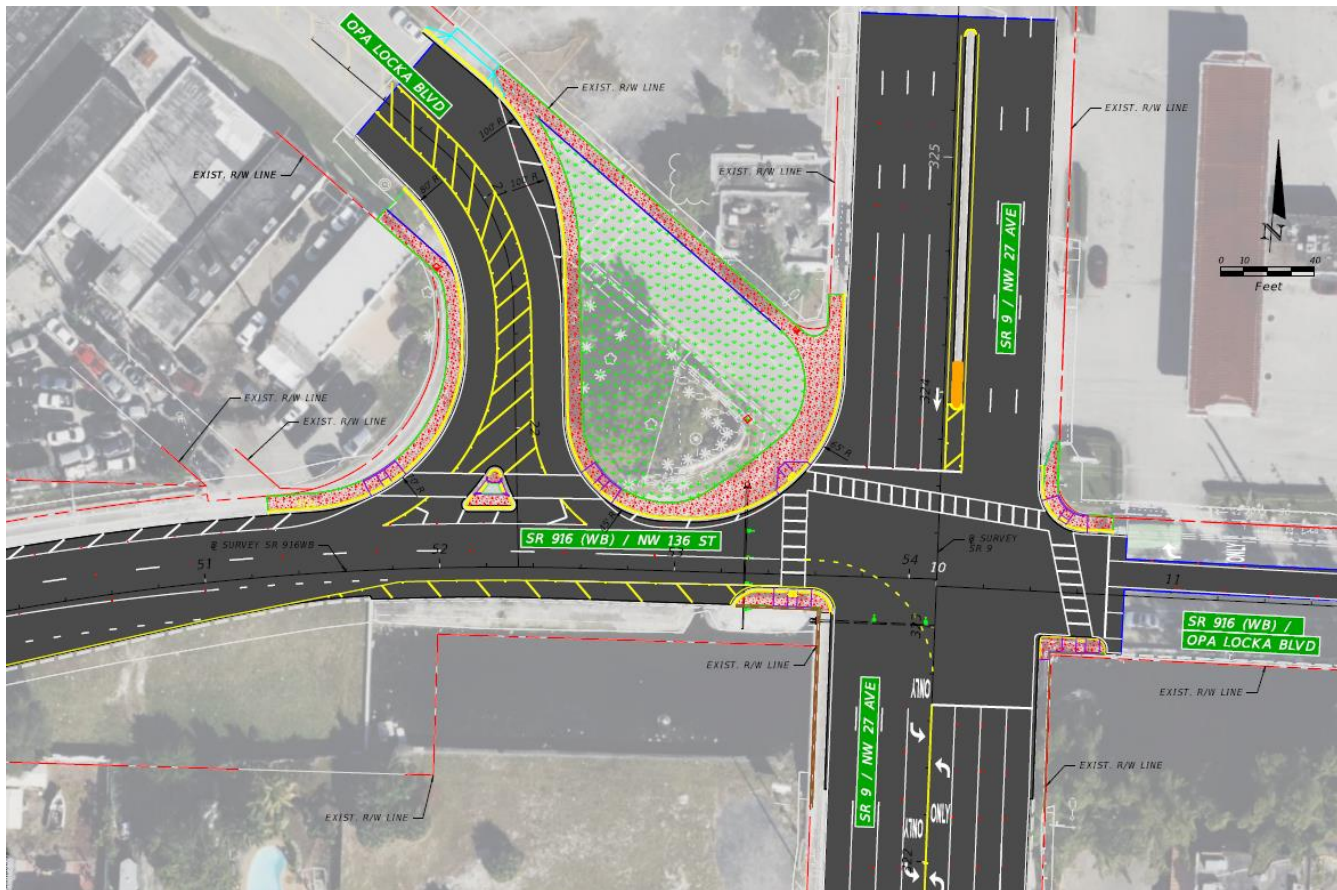


Project Scope

- Shifting the westbound Opa-Locka Boulevard entrance further west to improve safety
- Improving lanes at the intersection of NW 135 street and NW 27 Avenue by providing eastbound dual left turns
- Replacing traffic signal at the intersection of SR 916/NW 136 Street westbound and NW 27 Avenue
- Improving sidewalk connectivity
- Upgrading pedestrian signage, signals and ramps
- Repaving and restriping the road
- Improving drainage

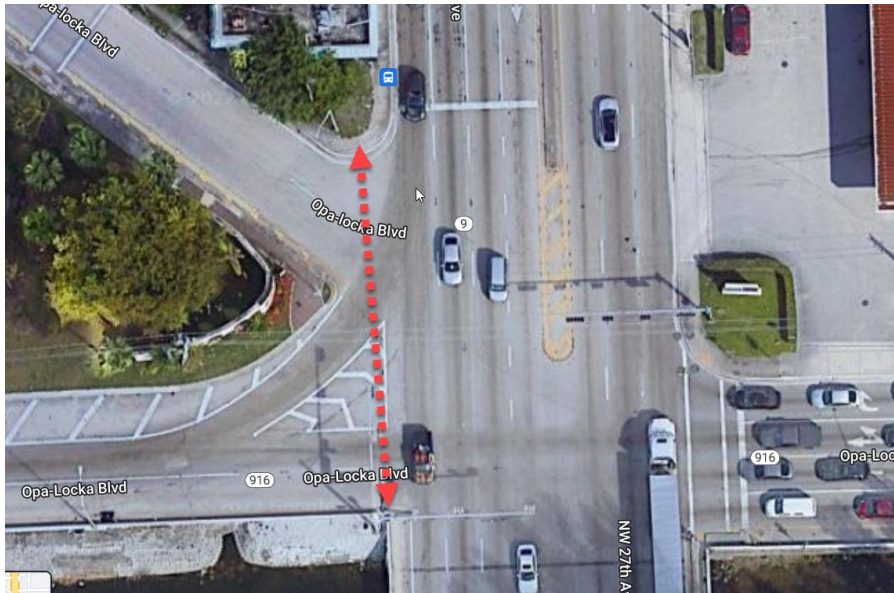


Revised Intersection Layout SR916/Opa-Locka Blvd (WB) and NW 27 Avenue Intersection

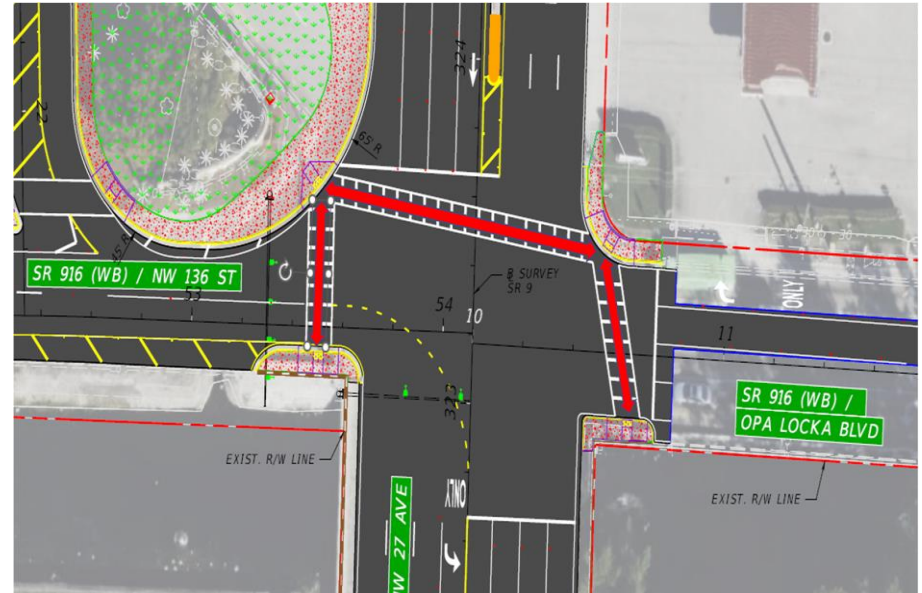




Existing



Proposed





What to Expect During Construction

Maintenance of Traffic (MOT):

- Lane closures shall occur only during non-peak hours or on non-event days/weekends
- At least one travel lane will remain open at all times

Non-peak hours are:

9:30 p.m. to 6:00 a.m. weekdays and weekends





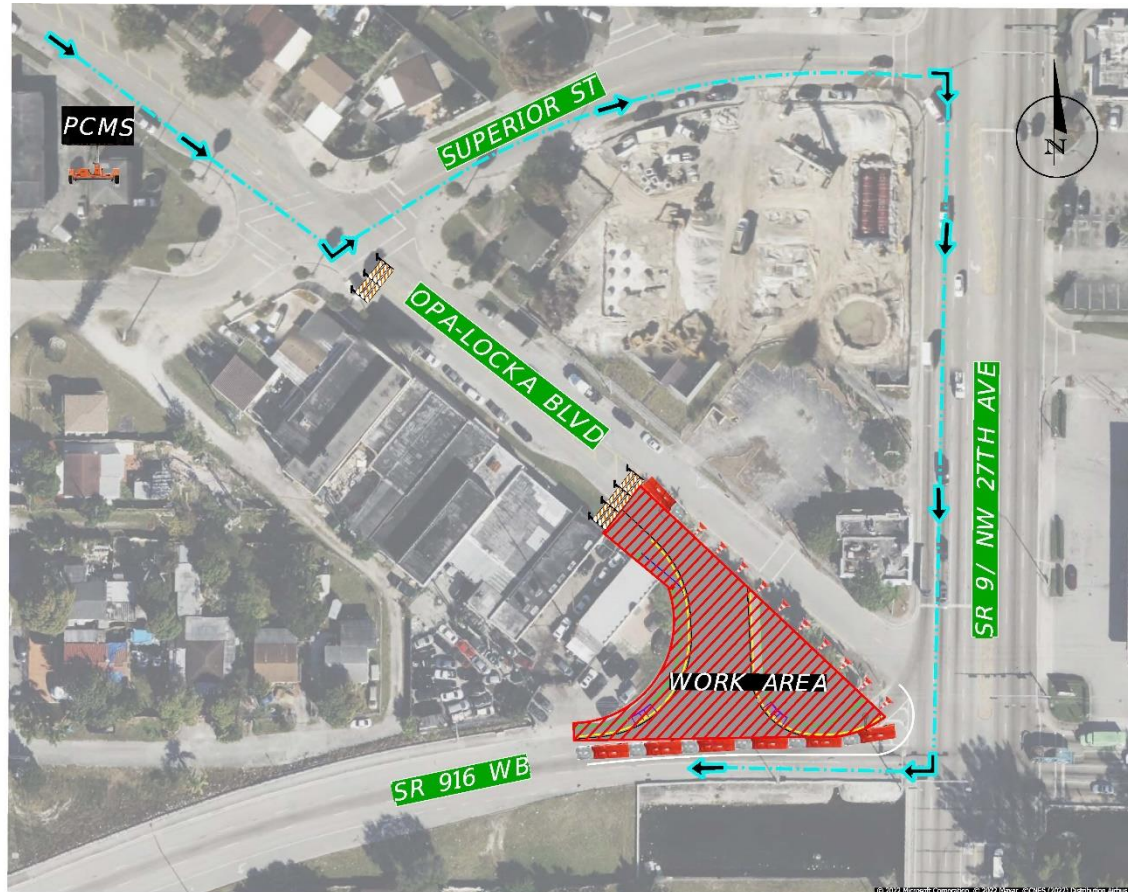
What to Expect During Construction

- Vehicular detours needed for re-alignment of Opa-Locka Boulevard Extension.
- Work will be completed in phases in order to minimize traffic disruption
- Daytime work will be limited to ancillary features such as roadway signing, pedestrian signalization and sidewalk reconstruction
- Nighttime work will repave and restripe the roadway



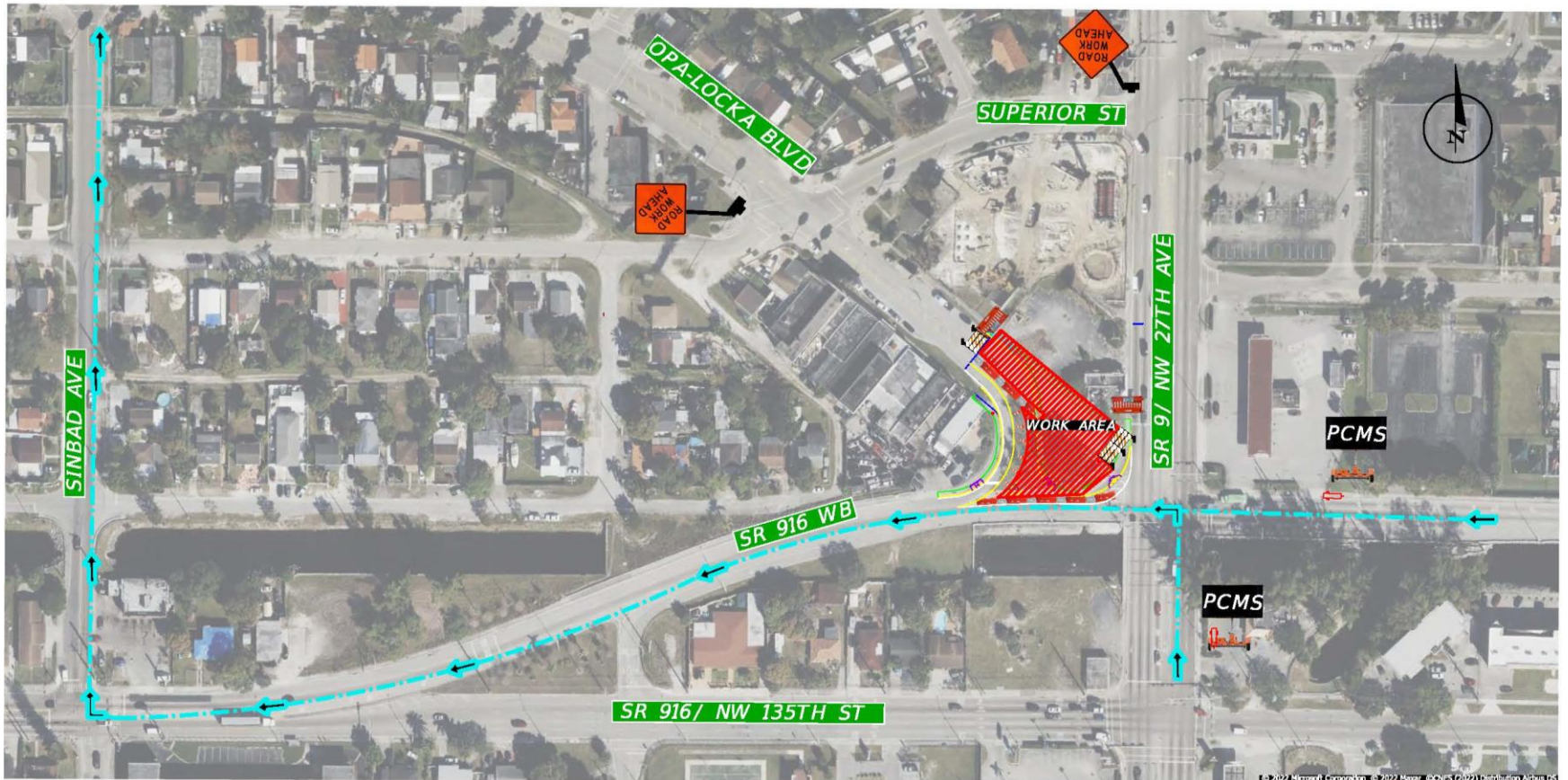


Vehicular Detours





Vehicular Detours





What to Expect During Construction



Posted Speed:

- Existing speed limits will be maintained during construction



Dust:

- The contractor will be required to water and sweep in order to minimize construction-related dust

What to Expect During Construction



Noise:

- Some noise should be expected during allowable construction time



Access:

- Access to businesses and residences will be maintained at all times



Open Discussion

- In-person attendees please form a line
- Virtual attendees:
 - Submit your comments in the “Questions” box
 - If you would like to speak, please use the “Raise Hand” button on your GoToWebinar panel and you will be unmuted
- All participants will have three minutes to provide comments/questions. Please clearly state your name and address
- Staff will be available to answer questions in the order they are received and as time permits. If your question is not responded to during the event, a response will be provided in writing afterwards



Florida Department of
TRANSPORTATION

SR 823/W 4 Avenue/Red Road
Between W 57 Street and W 58 Terrace
FIN: 431635-5-52-01

CONTACT

**Community Outreach Specialist
Rodolfo Roman**



786-519-7160



Rodolfo.Roman@dot.state.fl.us



www.fdotmiamidade.com

Download tonight's presentation at:

www.fdotmiamidade.com/design-projects/north-miami-dade/sr-916nw-136-stnw-135-st-from-nw-30-ave-to-nw-27-ave-1.html

Please take our exit survey!



Florida Department of
TRANSPORTATION

SR 916/NW 135 Street/NW 136 Street
From NW 30 Avenue to NW 27 Avenue
FIN: 447805-1-52-01

**Scan QR code to
download the presentation.**





Florida Department of
TRANSPORTATION

SR 916/NW 135 Street/NW 136 Street
From NW 30 Avenue to NW 27 Avenue
FIN: 447805-1-52-01

