



Florida Department of
TRANSPORTATION

SR 9A/I-95 from SR 90/SW 8 Street to S Dixie Highway
SR 970/SR 5/Downtown Distributor Ramps
From South Miami Avenue to SE 2 Avenue
FINS: 443942/443890-1-52-01

**We are currently experiencing
technical difficulties**

**Thank you for your patience. We will
resume shortly**



Florida Department of
TRANSPORTATION

SR 9A/I-95 from SR 90/SW 8 Street to S Dixie Highway
SR 970/SR 5/Downtown Distributor Ramps
From South Miami Avenue to SE 2 Avenue
FINS: 443942/443890-1-52-01

WELCOME!

**State Road (SR) 9A/I-95 from 90/SW 8
Street to S Dixie Highway
SR 970/SR 5/Downtown Distributor Ramps
from South Miami Avenue to SE 2 Avenue
Roadway Projects**

The meeting will begin soon



Florida Department of
TRANSPORTATION

SR 9A/I-95 from SR 90/SW 8 Street to S Dixie Highway
SR 970/SR 5/Downtown Distributor Ramps
From South Miami Avenue to SE 2 Avenue
FINS: 443942/443890-1-52-01

- If you experience technical difficulties, contact **Walna Calixte** at **786-537-3363** or e-mail **Walna@iscprgroup.com** so she can assist you.



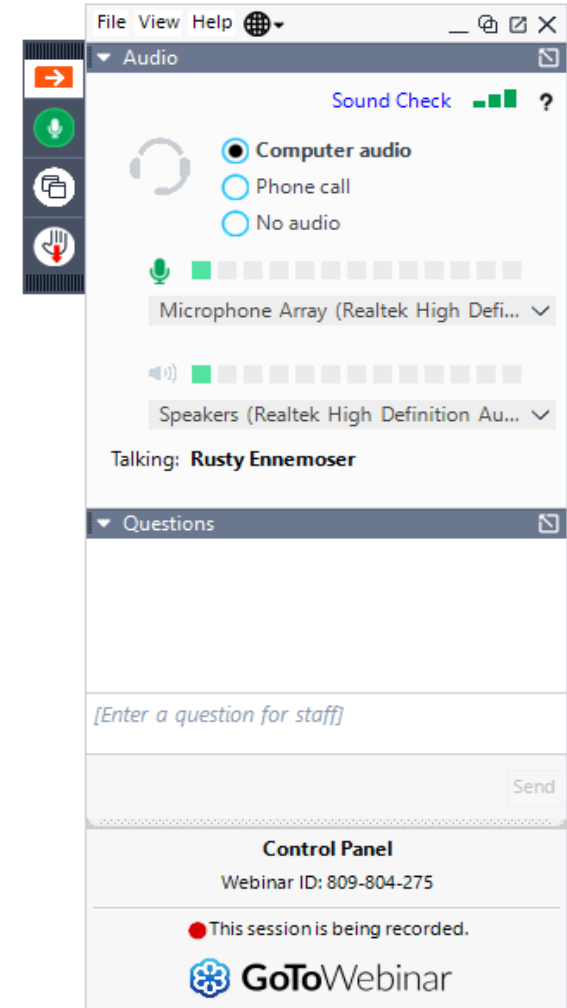
Meeting Agenda

- Rules of Engagement
- Meet the Project Team
- Non-Discrimination Policy
- Projects Location
- Projects Schedule and Cost
- Projects Scope of Work
- What to Expect
- Maintenance of Traffic
- Questions and Answers



Rules of Engagement

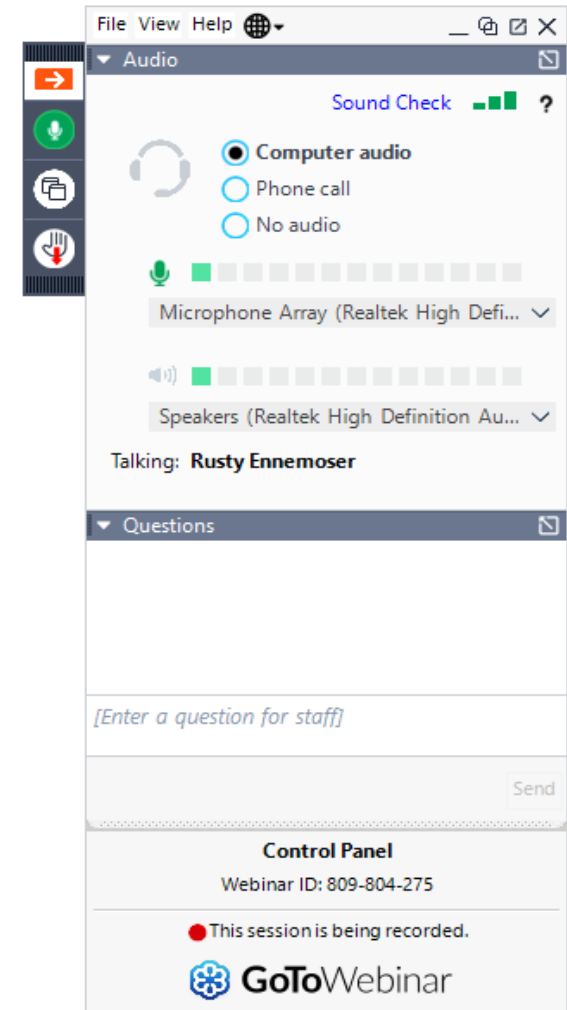
- To participate during the open discussion, we will first call on the in-person attendees to ask questions. We ask that you raise your hand, and a staff member will advise when to state your question.
- For participants joining us virtually, attendees **will remain muted** throughout the meeting except for the **Open Discussion** session. Use the “**Raise Hand**” button on your **GoToWebinar** panel to provide a comment. Provide your full name, address and comment





Rules of Engagement

- Attendees are welcome to submit questions/comments using the GoToWebinar Question Panel and a member of the team will respond during the open discussion.
- Participants will have **three minutes** to ask questions and provide comments





Rules of Engagement

- This meeting is being recorded
- The meeting will begin with a presentation followed by comments and questions
- If you are calling in via phone, you will not be able to provide comments during the meeting. To provide comments, call 786-537-3363 or e-mail Walna@iscprgroup.com
- Tonight's presentation is available at:
<http://www.fdotmiamidade.com/design-projects/expressways/sr-970sr-5downtown-distributor-ramps-from-s-miami-ave-to-se-2-ave-and-sr-9ai-95-from-sr-90sw-8-st-to-s-dixie-hwy--1.html>



Florida Department of
TRANSPORTATION

SR 9A/I-95 from SR 90/SW 8 Street to S Dixie Highway
SR 970/SR 5/Downtown Distributor Ramps
From South Miami Avenue to SE 2 Avenue
FINS: 443942/443890-1-52-01

**Scan the QR code to
download the presentation.**





Project Team

- FDOT Project Manager: Carmen Bermudez, PE
- FDOT Supervisor: Humberto Gomez, P.E.
- Roadway Engineer of Record: Diego Espitia, P.E.
- Community Outreach Specialist: Rodolfo Roman



Non-Discrimination Policy

The Florida Department of Transportation is required to comply with various non-discrimination laws and regulations including Title VI of the Civil Rights Act of 1964.

Public participation at this meeting is solicited without regard to race, color, national origin, age, sex, religion, disability or family status. Persons wishing to express their concerns about Title VI may do so by contacting:

District Six Title VI Coordinator

Nicholas Danu, P.E. at 305-470-5219 or in writing: FDOT, 1000 NW 111 Avenue,
Miami, FL 33172, email: Nicholas.Danu@dot.state.fl.us

State Title VI Coordinator

Jacqueline Paramore at 850-414-4753 or in writing: Equal Opportunity Office
605 Suwannee Street, MS 65,
Tallahassee, FL 32399 email: Jacqueline.Paramore@dot.state.fl.us



Florida Department of
TRANSPORTATION

SR 9A/I-95 from SR 90/SW 8 Street to S Dixie Highway
SR 970/SR 5/Downtown Distributor Ramps
From South Miami Avenue to SE 2 Avenue
FINS: 443942/443890-1-52-01

Projects Information

Purpose and Need:

- Extend the life of the concrete pavement along the downtown distributor ramps
- Repave the outside shoulders only along the SR 9A/I-95 from SR 90/SW 8 Street to S Dixie Highway

Municipality in the area:





Projects Schedule and Cost

Milestone	Date
Production	1/2023
Letting Date	5/2023
Construction Tentative Start	Fall 2023
Construction Estimated Duration	About nine months
Construction Tentative End	Summer 2024
Total Estimated Construction Cost	\$2.5 million (Combined)



The projects are currently in 60% design phase.

- Work with municipalities to review plans
- Receive feedback from the public

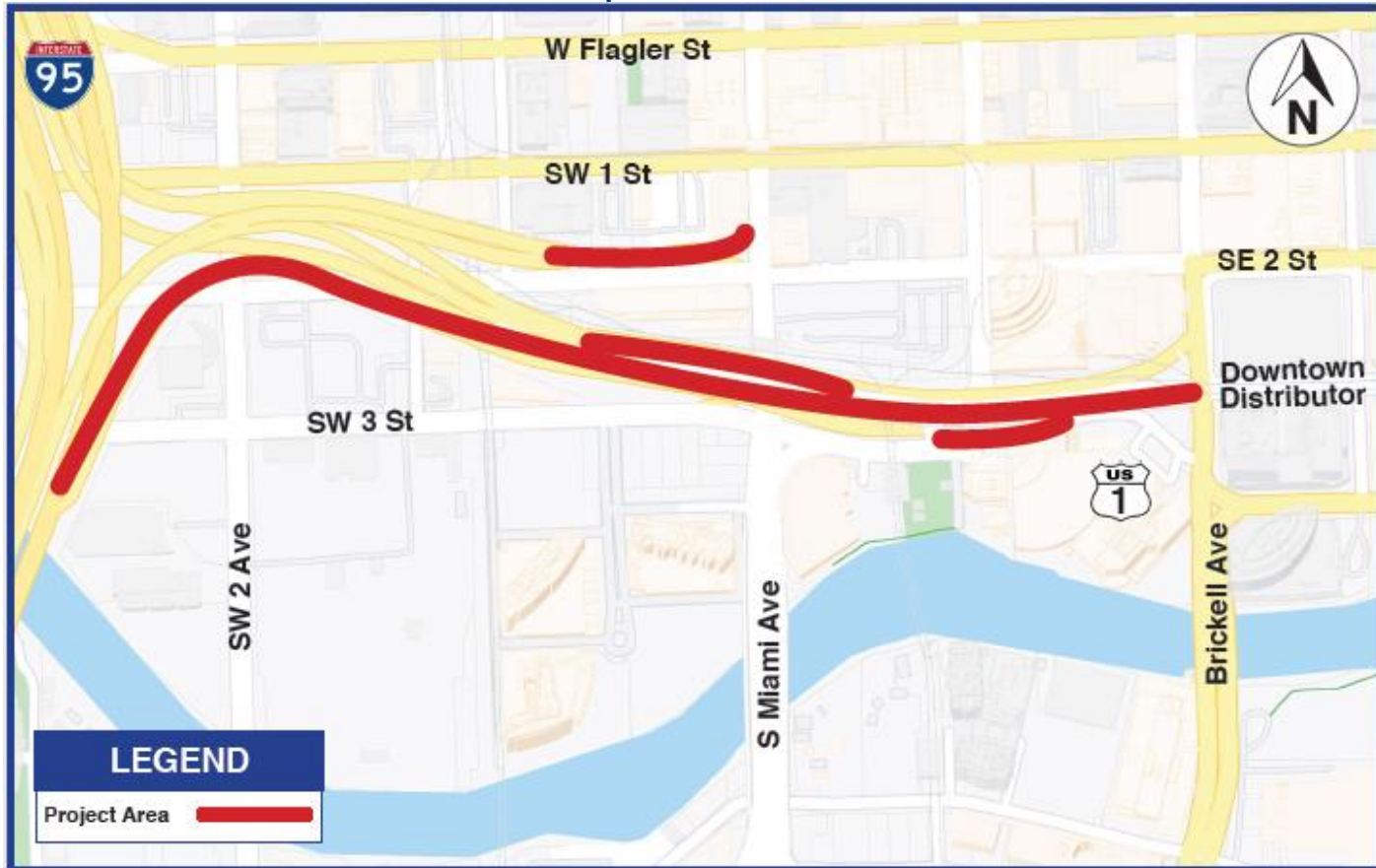


Florida Department of
TRANSPORTATION

SR 9A/I-95 from SR 90/SW 8 Street to S Dixie Highway
SR 970/SR 5/Downtown Distributor Ramps
From South Miami Avenue to SE 2 Avenue
FINS: 443942/443890-1-52-01

Project Location Map

SR 970/SR 5/Downtown Distributor Ramps from South Miami Avenue to SE 2 Avenue





Projects Scope

SR 970/SR 5/Downtown Distributor Ramps from South Miami Avenue to SE 2 Avenue

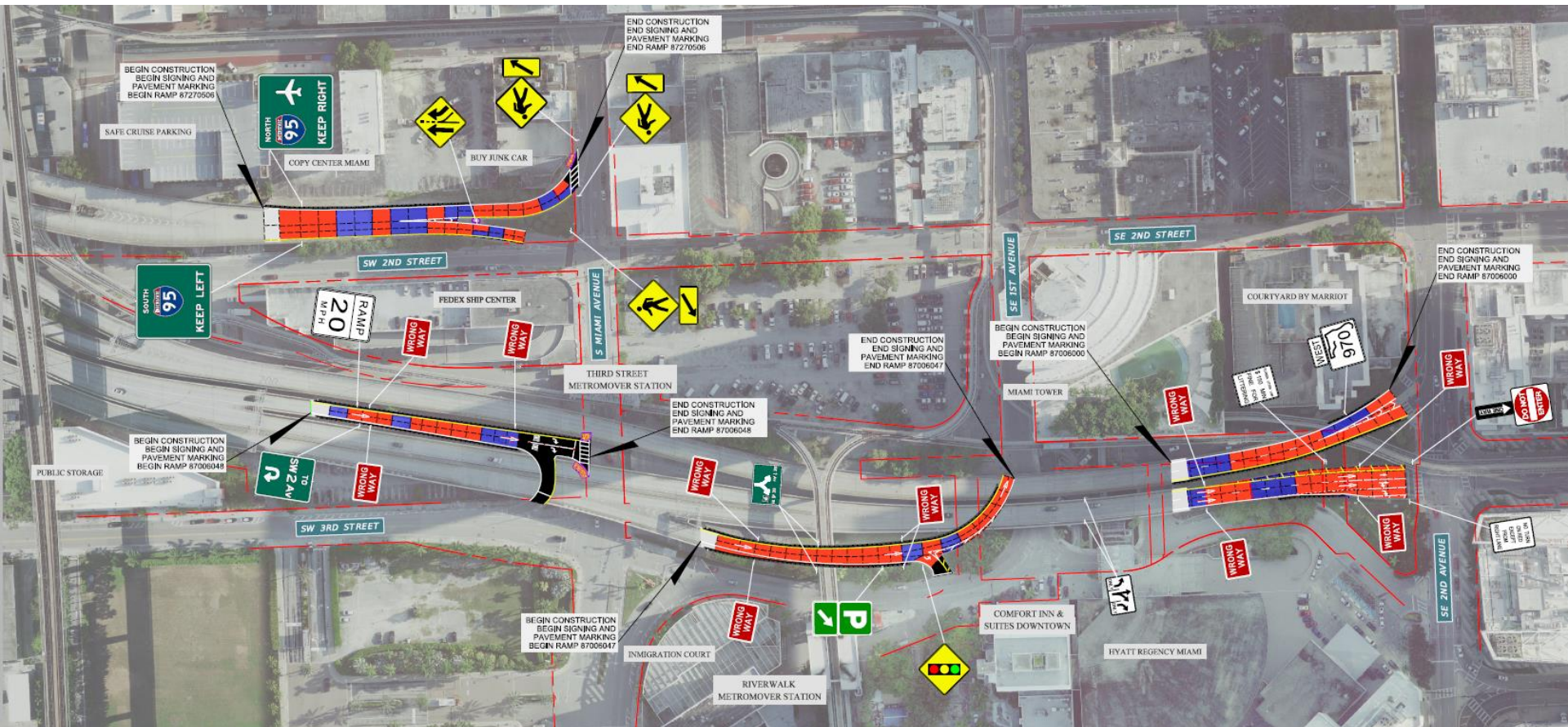
- Rehabilitating the concrete pavement
- Upgrading guardrails
- Enhancing pedestrian curb ramps
- Updating pedestrian signals, signs and pavement markings



Florida Department of TRANSPORTATION

SR 9A/I-95 from SR 90/SW 8 Street to S Dixie Highway
SR 970/SR 5/Downtown Distributor Ramps
From South Miami Avenue to SE 2 Avenue
FINS: 443942/443890-1-52-01

SR 970/SR 5/Downtown Distributor Ramps from South Miami Avenue to SE 2 Avenue



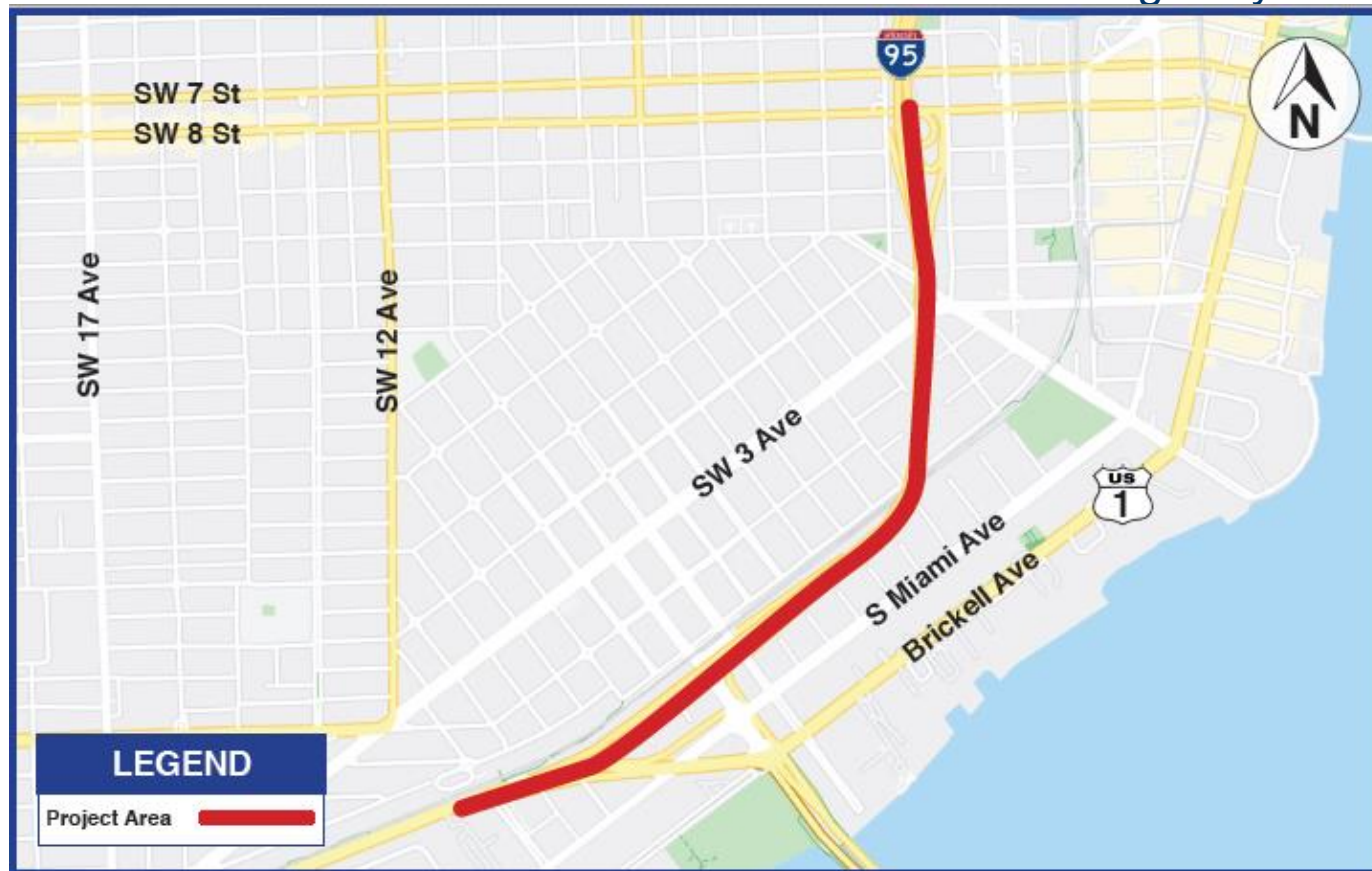


Florida Department of
TRANSPORTATION

SR 9A/I-95 from SR 90/SW 8 Street to S Dixie Highway
SR 970/SR 5/Downtown Distributor Ramps
From South Miami Avenue to SE 2 Avenue
FINS: 443942/443890-1-52-01

Project Location Map

SR 9A/I-95 from SR 90/SW 8 Street to S Dixie Highway





Florida Department of
TRANSPORTATION

SR 9A/I-95 from SR 90/SW 8 Street to S Dixie Highway
SR 970/SR 5/Downtown Distributor Ramps
From South Miami Avenue to SE 2 Avenue
FINS: 443942/443890-1-52-01

Projects Scope

SR 9A/I-95 from SR 90/SW 8 Street to S Dixie Highway

- Repaving and restriping all shoulder pavement
- Updating signage



Florida Department of TRANSPORTATION

SR 9A/I-95 from SR 90/SW 8 Street to S Dixie Highway
SR 970/SR 5/Downtown Distributor Ramps
From South Miami Avenue to SE 2 Avenue
FINS: 443942/443890-1-52-01

SR 9A/I-95 at SR 5/US 1

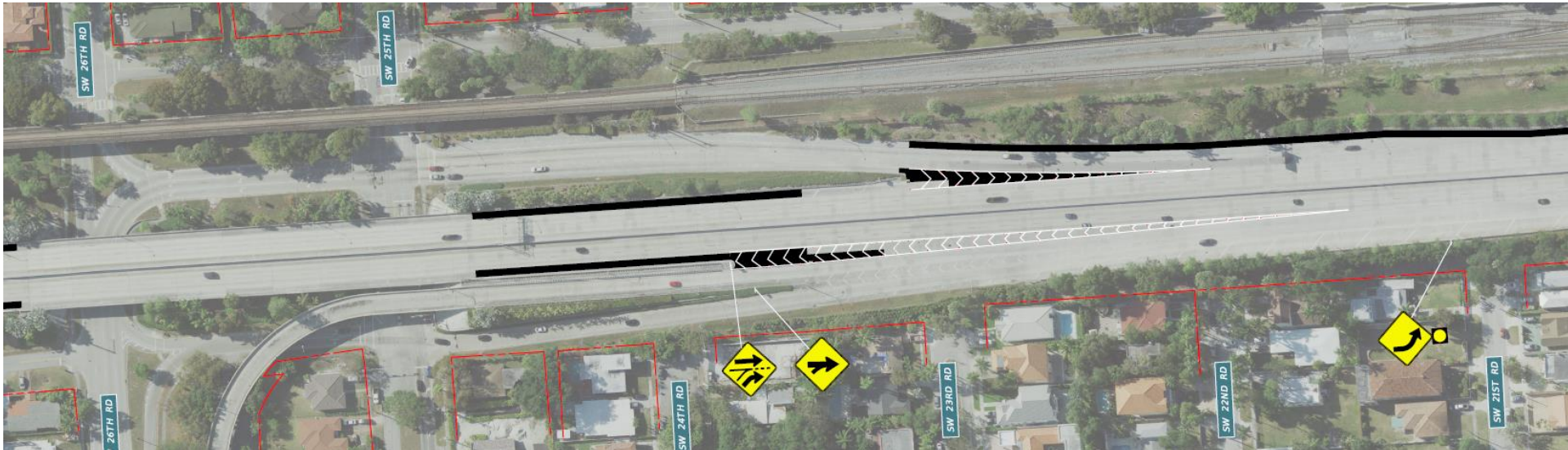




Florida Department of TRANSPORTATION

SR 9A/I-95 from SR 90/SW 8 Street to S Dixie Highway
SR 970/SR 5/Downtown Distributor Ramps
From South Miami Avenue to SE 2 Avenue
FINS: 443942/443890-1-52-01

SR 9A/I-95 from SW 26 Road to SW 21 Road

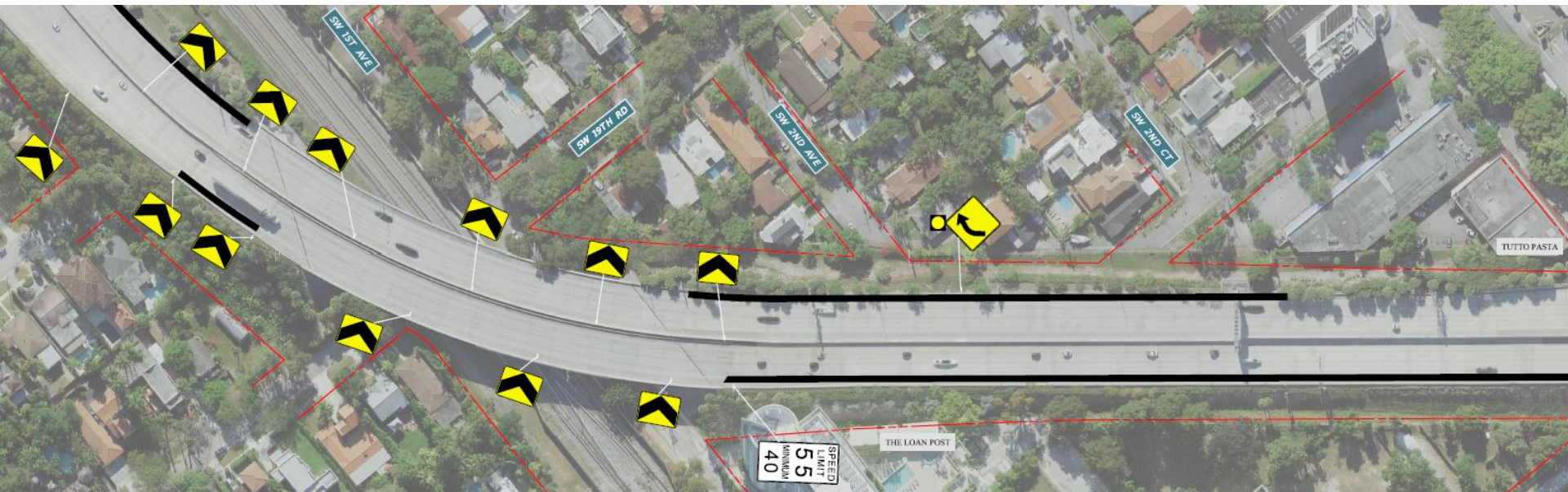




Florida Department of TRANSPORTATION

SR 9A/I-95 from SR 90/SW 8 Street to S Dixie Highway
SR 970/SR 5/Downtown Distributor Ramps
From South Miami Avenue to SE 2 Avenue
FINS: 443942/443890-1-52-01

SR 9A/I-95 from SW 21 Road to SW 2 Court





Florida Department of
TRANSPORTATION

SR 9A/I-95 from SR 90/SW 8 Street to S Dixie Highway
SR 970/SR 5/Downtown Distributor Ramps
From South Miami Avenue to SE 2 Avenue
FINS: 443942/443890-1-52-01

SR 9A/I-95 from SW 2 Court to SR 90/SW 8 Street





Construction Phasing

Phasing:

- Phase 1:
 - Reconstructing the guardrail and concrete railings
 - Improving the pedestrian ramps
 - Repaving and restriping the I-95 asphalt shoulders
 - Improving signalization





Construction Phasing

Phasing:

- Phase 2:
 - Rehabilitating the existing concrete pavement
 - Restriping the existing ramps





What to Expect During Construction

Maintenance of Traffic (MOT):

- Lane closures shall occur only on non-event days and weekends during non-peak hours
- Intermittent full ramp closures and detours are anticipated for each Downtown Distributor ramp

Non-peak hours are:

- 9 p.m. to 7 a.m. Sunday through Friday
- 11 p.m. to 7 a.m. Friday through Sunday





What to Expect During Construction



Speed:

- Posted speed limits will be maintained



Dust:

- The contractor will be required to water and sweep in order to minimize construction-related dust

What to Expect During Construction



Noise:

- Some noise should be expected during allowable construction time



Access:

- Access to businesses and residences will be maintained



Questions and Answers

- Please submit your comments in the question box
- After addressing comments in the question box, we will open the microphones. If we are unable to answer your question, the project team will provide a written response after the meeting
- If you would like to speak, please press the raise your hand button. Participants will have three minutes to provide comments and questions to allow others to speak
- Staff will be available to answer questions in the order they are received and as time permits. If your question is not responded to during the event, a response will be provided in writing following the meeting



Florida Department of
TRANSPORTATION

SR 9A/I-95 from SR 90/SW 8 Street to S Dixie Highway
SR 970/SR 5/Downtown Distributor Ramps
From South Miami Avenue to SE 2 Avenue
FINS: 443942/443890-1-52-01

CONTACT

**Community Outreach Specialist
Rodolfo Roman**



786-519-7160



Rodolfo.Roman@dot.state.fl.us



www.fdotmiamidade.com

Download tonight's presentation at:

<http://www.fdotmiamidade.com/design-projects/expressways/sr-970sr-5downtown-distributor-ramps-from-s-miami-ave-to-se-2-ave-and-sr-9ai-95-from-sr-90sw-8-st-to-s-dixie-hwy--1.html>

Please take our exit survey!



Florida Department of
TRANSPORTATION

SR 9A/I-95 from SR 90/SW 8 Street to S Dixie Highway
SR 970/SR 5/Downtown Distributor Ramps
From South Miami Avenue to SE 2 Avenue
FINS: 443942/443890-1-52-01

**Scan QR code to
download the presentation.**





Florida Department of
TRANSPORTATION

SR 9A/I-95 from SR 90/SW 8 Street to S Dixie Highway
SR 970/SR 5/Downtown Distributor Ramps
From South Miami Avenue to SE 2 Avenue
FINS: 443942/443890-1-52-01

