

# Drive Safe 95 Express eNewsletter No. 4

## Jackson Memorial Employees Learn About the Do's & Don'ts of Driving on the 95 Express Lanes

January 21, 2016

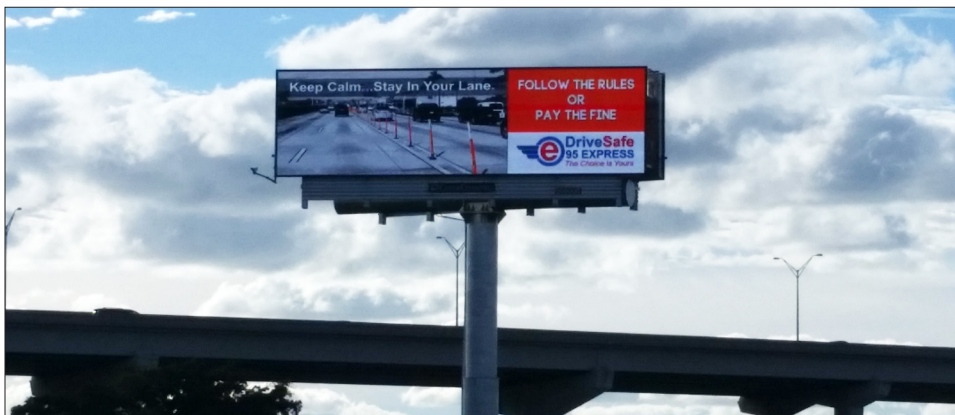
Drive Safe 95 Express representatives teamed up with Jackson Memorial and set-up an informational booth at the main Atrium to distribute Drive Safe 95 Express campaign material to all employees and visitors. The booth was visited by 100+ people throughout the day.



Maggie Bruno and Dorothy Denizard at the informational booth.



## MEDIA HIGHLIGHTS



Digital Billboard display on the Golden Glades Interchange

## UPCOMING EVENTS 2016

**Friday, February 26**

Transportation Safety Event - [Download Flyer](#)  
(Miami-Dade County Government Center)

## **3** Do's & Don'ts Of 95 Express

### Do's

- Plan ahead
- Enter and exit at designated locations only
- Be alert and pay attention to the signs

### Don'ts

- Don't weave in and out of the express lanes
- Don't speed
- Don't enter when CLOSED

### Why are the express lanes closed sometimes?

- When there is a traffic incident affecting the lanes
- When maintenance is being performed

## RESOURCES

[Press Release](#)

[Fact Card \(English\)](#)

[Fact Card \(Spanish\)](#)

[Fact Card \(Creole\)](#)

[95 Express Map](#)

### Follow us on social media:

 [twitter.com/myfdot\\_miami](https://twitter.com/myfdot_miami)

 [facebook.com/myfdotmiami](https://facebook.com/myfdotmiami)

### For additional information, please contact:

Maggie Bruno

*Public Information Officer*

954.649.1519